

THE THIRTIETH LEGISLATURE
APPLICATION FOR GRANTS
CHAPTER 42F, HAWAII REVISED STATUTES

Type of Grant Request:



Operating



Capital

Legal Name of Requesting Organization or Individual: Db:

United Cerebral Palsy Association of Hawaii

UCPA of Hawaii

Amount of State Funds Requested: \$ 80,000

Brief Description of Request (Please attach word document to back of page if extra space is needed):

See following attached page.

Amount of Other Funds Available:

State: \$ _____

Federal: \$ _____

County: \$ _____

Private/Other: \$ _____

Total amount of State Grants Received in the Past 5 Fiscal Years:

\$ 0

Unrestricted Assets:

\$ 856,684.57

New Service (Presently Does Not Exist): ☒ Existing Service (Presently in Operation): ☐

Type of Business Entity:



501(C)(3) Non Profit Corporation



Other Non Profit



Other

Mailing Address:

420 Waiakamilo Road #105

City:

Honolulu

State:

HI

Zip:

96817

Contact Person for Matters Involving this Application

Name:

John Van S Nishida

Title:

Executive Director

Email:

john.nishida@unitedcerebralpalsyhawaii.org

Phone:

(808) 532-6744

Authorized Signature

John Van S Nishida, Executive Director

Name and Title

Date Signed

Brief Description of Request:

In Hawaii, over 4,000 residents are estimated to live with cerebral palsy (CP). The Center for Disease Control reports that CP is the most common motor disability in childhood affecting 1 in 345 newborns. While the focus of medical research and interventions has traditionally centered on children, there is a growing awareness of the needs of adults, particularly older adults, with cerebral palsy. The advances in healthcare have significantly increased the life expectancy of individuals with cerebral palsy, resulting in a rising population of adults with this condition. By 2019, more than 1 million adults in the U.S. were living with CP, and this number continues to grow. Despite this trend of an aging cerebral palsy population, the needs of adults with cerebral palsy, particularly as they age, remain largely unknown. Research highlights that adults with CP face unique challenges as they transition from adolescence into adulthood, including limited resources and a lack of specialized healthcare professionals. As life expectancy for people with CP continues to rise, the necessity for a better understanding of their needs, particularly in terms of aging, healthcare, community access, and employment, is critical.

This grant study seeks to develop a comprehensive database on the aging population of individuals with Cerebral Palsy (CP) in Hawai'i, focusing on identifying their evolving needs across multiple life domains. Through data collection and analysis, we will assess the physical, cognitive, and social impact of aging on individuals with CP, using various measurement tools such as the Gross Motor Function Classification System (GMFCS) and a newly developed "emoji scale" survey. This study will provide vital insights into the evolving needs of individuals aging with CP and inform future interventions, care services, and resources. This grant study will provide UCPA of Hawaii, the advocate for those with cerebral palsy in Hawaii, a better understanding of the needs and challenges faced by adults with cerebral palsy as they age, providing essential data to help shape policies, services, and support systems that improve their quality of life. The outcomes will be critical not only for those living with cerebral palsy but also for Hawaii's healthcare providers, policymakers, and other service organizations seeking to improve the overall well-being of individuals with disabilities in Hawaii.

Application Submittal Checklist

The following items are required for submittal of the grant application. Please verify and check off that the items have been included in the application packet.

- ☒ 1) Hawaii Compliance Express Certificate (If the Applicant is an Organization)
- ☒ 2) Declaration Statement
- ☒ 3) Verify that grant shall be used for a public purpose
- ☒ 4) Background and Summary
- ☒ 5) Service Summary and Outcomes
- ☒ 6) Budget
 - a) Budget request by source of funds ([Link](#))
 - b) Personnel salaries and wages ([Link](#))
 - c) Equipment and motor vehicles ([Link](#))
 - d) Capital project details ([Link](#))
 - e) Government contracts, grants, and grants in aid ([Link](#))
- ☒ 7) Experience and Capability
- ☒ 8) Personnel: Project Organization and Staffing


AUTHORIZED SIGNATURE
PRINT NAME AND TITLE
DATE

**DECLARATION STATEMENT OF
APPLICANTS FOR GRANTS PURSUANT TO
CHAPTER 42F, HAWAII REVISIED STATUTES**

The undersigned authorized representative of the applicant certifies the following:

- 1) The applicant meets and will comply with all of the following standards for the award of grants pursuant to Section 42F-103, Hawai'i Revised Statutes:
 - a) Is licensed or accredited, in accordance with federal, state, or county statutes, rules, or ordinances, to conduct the activities or provide the services for which a grant is awarded;
 - b) Complies with all applicable federal and state laws prohibiting discrimination against any person on the basis of race, color, national origin, religion, creed, sex, age, sexual orientation, or disability;
 - c) Agrees not to use state funds for entertainment or lobbying activities; and
 - d) Allows the state agency to which funds for the grant were appropriated for expenditure, legislative committees and their staff, and the auditor full access to their records, reports, files, and other related documents and information for purposes of monitoring, measuring the effectiveness, and ensuring the proper expenditure of the grant.
- 2) If the applicant is an organization, the applicant meets the following requirements pursuant to Section 42F-103, Hawai'i Revised Statutes:
 - a) Is incorporated under the laws of the State; and
 - b) Has bylaws or policies that describe the manner in which the activities or services for which a grant is awarded shall be conducted or provided; and
- 3) If the applicant is a non-profit organization, it meets the following requirements pursuant to Section 42F-103, Hawai'i Revised Statutes:
 - a) Is determined and designated to be a non-profit organization by the Internal Revenue Service; and
 - b) Has a governing board whose members have no material conflict of interest and serve without compensation.
- 4) The use of grant-in-aid funding complies with all provisions of the Constitution of the State of Hawaii (for example, pursuant to Article X, section 1, of the Constitution, the State cannot provide "... public funds ... for the support or benefit of any sectarian or nonsectarian private educational institution...").

Pursuant to Section 42F-103, Hawai'i Revised Statutes, for grants used for the acquisition of land, when the organization discontinues the activities or services on the land acquired for which the grant was awarded and disposes of the land in fee simple or by lease, the organization shall negotiate with the expending agency for a lump sum or installment repayment to the State of the amount of the grant used for the acquisition of the land.

Further, the undersigned authorized representative certifies that this statement is true and correct to the best of the applicant's knowledge.

United Cerebral Palsy Association of Hawaii

(Typed Name of Individual or Organization)

(Signature)

John Van S Nishida

(Typed Name)

(Date)

Executive Director

(Title)



Department of Commerce and Consumer Affairs

CERTIFICATE OF GOOD STANDING

I, the undersigned Director of Commerce and Consumer Affairs
of the State of Hawaii, do hereby certify that

UNITED CEREBRAL PALSY ASSOCIATION OF HAWAII

was incorporated under the laws of Hawaii on 06/25/1959 ;
that it is an existing nonprofit corporation; and that,
as far as the records of this Department reveal, has complied
with all of the provisions of the Hawaii Nonprofit Corporations
Act, regulating domestic nonprofit corporations.

IN WITNESS WHEREOF, I have hereunto set
my hand and affixed the seal of the
Department of Commerce and Consumer
Affairs, at Honolulu, Hawaii.

Dated: January 13, 2025

Director of Commerce and Consumer Affairs



Public Purpose:

1. Name of the Requesting Organization

United Cerebral Palsy Association of Hawaii (UCAPH)

2. Public Purpose for the Grant

The United Cerebral Palsy Association of Hawaii (UCAPH) seeks funding for research that will provide valuable quantitative and qualitative insights into the lived experiences of adults with cerebral palsy (CP) as they age, with a focus on their challenges and needs. By addressing knowledge gaps, the study aims to improve Hawaii's policy, healthcare, and community resources, ensuring individuals with CP have the support and opportunities needed to thrive as they age.

3. Services to be Supported by the Grant

The requested funds will support the following services:

- Development of a comprehensive database of consumers with Cerebral Palsy
- Assess perceived changes in functioning
- Evaluate physical and mental health needs
- Examine access to social, entertainment, and employment opportunities
- Provide recommendations

4. Target Group

This study targets the estimated 4,000 individuals with cerebral palsy in Hawaii, focusing on adults and seniors. It emphasizes Honolulu and potential outreach to other islands. By including both urban and rural populations, it aims to capture diverse experiences and challenges across the state.

5. Cost of the Grant and Budget

The total cost of the grant request is \$80,000, which will be allocated as follows:

- Personnel Labor \$68,000.00
- Contracted Services \$10,000.00
- Parking and Mileage \$500.00
- Office Supplies \$500.00
- Advertising/Promotion \$1,000.00

The grant will be used for one year, beginning on July 1, 2025, with quarterly reporting on outcomes and financial expenditures to ensure transparency and accountability.

II. Background and Summary of the United Cerebral Palsy Association of Hawaii (UCPA of Hawaii)

The United Cerebral Palsy Association of Hawaii (UCPA of Hawaii) was established on June 26, 1959, in the Territory of Hawaii, founded by six parents advocating for increased services and opportunities for their children with cerebral palsy. Over the past 65 years, the UCPA of Hawaii has become a vital advocate and service provider for individuals with cerebral palsy and other similar disabilities across the state. The organization currently serves as a contractor for the State of Hawaii Department of Health in providing Early Childhood Intervention services. Additionally, it offers outreach and educational services to individuals with learning delays and disabilities. UCPA of Hawaii operates a central office on Waiakamilo Road in Honolulu, serving approximately 300-350 children and adults annually.

In Hawaii, over 4,000 residents are estimated to live with cerebral palsy (CP). The CDC reports that CP is the most common motor disability in childhood, affecting 1 in 345 newborns. While the focus of medical research and interventions has traditionally centered on children, there is a growing awareness of the needs of adults, particularly older adults, with cerebral palsy. The advances in healthcare have significantly increased the life expectancy of individuals with cerebral palsy, resulting in a rising population of adults with this condition. By 2019, more than 1 million adults in the U.S. were living with CP, and this number continues to grow.

Despite this trend, the needs of adults with cerebral palsy, particularly as they age, remain largely unknown. Research highlights that adults with CP face unique challenges as they transition from adolescence into adulthood, including limited resources and a lack of specialized healthcare professionals. As life expectancy for people with CP continues to rise, the necessity for a better understanding of their needs, particularly in terms of aging, healthcare, community access, and employment, is critical.

Research Goals and Objectives

This proposed grant study aims to address the growing need to understand how individuals with cerebral palsy in Hawaii experience aging and how their needs evolve. Specifically, this grant study will:

1. **Assess perceived changes in functioning** experienced by people with cerebral palsy as they age.
2. **Evaluate physical and mental health needs**, with a focus on access to healthcare services and community resources.
3. **Examine access to social, entertainment, and employment opportunities**, and the perceived satisfaction with these resources.
4. **Provide recommendations** for improving resource access and quality of life for adults with cerebral palsy, particularly older adults, in Hawaii.

Public Purpose and Need Served

This grant study will contribute significantly to the literature on cerebral palsy, adding both quantitative and qualitative data on the lived experiences of adults with CP as they age. Understanding how individuals with cerebral palsy perceive their challenges and needs will help inform future policy, healthcare, and community resource planning. This is particularly important in Hawaii, where the unique geographic and demographic factors may present specific barriers to service access.

By addressing these gaps in knowledge, this grant study aims to improve the quality of life for individuals with cerebral palsy in Hawaii, helping to ensure that as they age, they have the resources, support, and opportunities necessary to thrive.

Target Population and Geographic Coverage

The target population for this study includes individuals with cerebral palsy who reside in Hawaii, focusing on both adults and seniors. The geographic scope covers the entire state of Hawaii, with particular emphasis on Honolulu, where UCPA of Hawaii operates, though outreach may extend to

other islands as well. By assessing both urban and rural populations, the study will capture diverse experiences and challenges faced by individuals with cerebral palsy across the state.

Conclusion

Through this grant study, UCPA of Hawaii aims to better understand the needs and challenges faced by adults with cerebral palsy as they age, providing essential data to help shape policies, services, and support systems that improve their quality of life. The outcomes will be critical not only for those living with cerebral palsy but also for healthcare providers, policymakers, and organizations seeking to improve the overall well-being of individuals with disabilities in Hawaii.

III. Service Summary: Aging with Cerebral Palsy in Hawai'i - Needs Assessment and Data Collection Study

Overview:

This grant study seeks to develop a comprehensive database on the aging population of individuals with Cerebral Palsy (CP) in Hawai'i, focusing on identifying their evolving needs across multiple life domains. Through data collection and analysis, we will assess the physical, cognitive, and social impact of aging on individuals with CP, using various measurement tools such as the Gross Motor Function Classification System (GMFCS) and a newly developed "emoji scale" survey. This study will provide vital insights into the evolving needs of individuals aging with CP and inform future interventions, care services, and resources.

Goals and Objectives:

1. Develop a Database of Individuals with CP in Hawai'i:

- **"Age Groups":** Data will be categorized by age brackets:
 - Birth to 20 years
 - 21 to 40 years
 - 41 to 60 years
 - 61 years and older
- The goal is to quantify the number of individuals with CP in each of these age categories, both actual and projected.

2. Assess Mobility Changes:

- Quantify the changes in mobility for individuals aging with CP within the outlined "Age Groups".
- Determine when changes were first noticed, their impact on life, and how these changes have influenced daily activities and adaptations.

3. Analyze Pain Changes:

- Quantify the progression of pain levels over time, focusing on shifts in pain severity and its impact on life for the outlined “Age Groups”.
- Investigate when pain changes became noticeable and their effect on the quality of life.

4. **Examine Communication Skills:**

Assess changes in verbal and written communication abilities over time and how individuals with CP adapt to these changes.

5. **Confidence vs. Fear:**

Investigate the level of confidence versus fear people with CP have about the future, and identify their main concerns.

6. **Analyze Resource Needs:**

Identify and analyze the perceived need for resources, including social support, community services, medical care, and specialized equipment.

7. **Assess Medical and Mental Health Care Needs:**

- Evaluate satisfaction with accessibility and the quality of medical and mental health care.
- Identify perceived difficulties in accessing care and potential barriers to services.

Scope of Work:

1. **Data Collection:**

- **Survey Tool:** The primary data collection tool will be a detailed questionnaire, which will focus on physical changes, pain, communication skills, confidence/fears, and healthcare needs.
- **Likert & Emoji Scales:** A five-point Likert scale will quantify responses on mobility, pain, and other health aspects, while an “emoji scale” will be employed for participants with cognitive

limitations. This will be validated in a pre-test phase for reliability.

2. Target Population:

The survey will be distributed to individuals with CP, their caregivers, and relevant organizations, such as the United Cerebral Palsy Association of Hawai'i, state health agencies, and disability service providers.

3. Analysis and Reporting:

- Data will be analyzed regularly (monthly updates) to track trends, challenges, and changes over time.
- A final report will be produced, summarizing findings and making recommendations for policy and service improvements.

Methodology:

1. Gross Motor Function Classification System (GMFCS):

The GMFCS will serve as a key measurement tool for assessing motor function levels over time. The scale will help compare changes in mobility for participants over 20 years.

2. Questionnaire Development:

- A structured questionnaire will cover multiple aspects of aging with CP, including physical, emotional, and cognitive impacts, resource needs, and healthcare accessibility.
- Responses will be collected on a Likert scale, with pictorial representations (emoji scale) for ease of use among participants with cognitive challenges.

3. Cognitive and Accessibility Challenges:

We will address cognitive challenges by simplifying survey questions and utilizing visuals and emoji-based scales,

ensuring that all participants, regardless of cognitive ability, can provide meaningful feedback.

4. Recruitment and Data Gathering:

Outreach will be facilitated through partnerships with local government agencies, non-profits, and academic institutions (e.g., the University of Hawai'i). These partners will assist in identifying participants and distributing the questionnaire.

5. Ongoing Data Collection and Analysis:

The data collection will span one year, with monthly updates on findings. This grant study will include qualitative components, such as video interviews with participants to capture in-depth experiences.

Timeline:

1. Phase 1: Initial Data Collection and Analysis (Year 1)

- Complete and validate the emoji scale for reliability.
- Complete initial data collection and analysis.
- Develop and distribute the questionnaire.
- Complete the initial research paper. Finalize summary and initial conclusions.

2. Phase 2: Ongoing Data Analysis and Journal Publishing

- Monthly updates on findings, with quarterly reports.
- Compile final research analysis summarizing key findings.
- Submit and publish the journal paper detailing the results.
- Share findings with relevant agencies, stakeholders, and the broader community.

Evaluation Plan:

1. Measure of Effectiveness:

- **Survey Completion:** Ensure the successful completion of the survey by a wide range of individuals with CP across age categories.
- **Reliability Testing:** Complete a reliability study of the emoji scale to ensure its effectiveness for cognitive accessibility.
- **Data Collection:** Gather sufficient data from a representative sample, aiming to reach the target population through community and institutional outreach.
- **Analysis:** Conduct robust data analysis to identify patterns and correlations related to mobility, pain, communication, and other factors.
- **Final Report:** The final analysis will be published in a peer-reviewed journal, and the data will be shared with key stakeholders, including the State of Hawai'i Department of Health, healthcare providers, and advocacy organizations.

Challenges and Solutions:

1. Recruitment:

Locating and recruiting individuals with CP may present logistical challenges. We will leverage established networks (UCP Hawai'i, state agencies, and non-profits) to ensure widespread participation.

2. Cognitive Accessibility:

Participants with varying cognitive abilities may struggle with standard survey formats. Emoji-based responses and caregiver assistance will help mitigate these challenges, ensuring inclusive data collection.

Impact and Long-Term Implications:

1. Data Sharing:

This grant study will provide a detailed needs assessment of individuals aging with CP in Hawai'i, which can be shared with state agencies, healthcare providers, and advocacy organizations to inform policy, improve services, and address gaps in care.

2. Resource Development:

The findings will guide the development of targeted resources and services, including medical, mental health, and social support, tailored to the needs of aging individuals with CP.

3. National Impact:

The results will be shared with Cerebral Palsy National, as well as other national organizations such as the CDC and peer-reviewed journals. This will help expand the understanding of aging with cerebral palsy and inform national care strategies.

4. Community Engagement:

Local communities will benefit from improved recreational and social opportunities for adults with CP. The findings will advocate for enhanced access to resources and care, ensuring the well-being of this often-overlooked population.

Conclusion:

This grant study represents a crucial step in understanding the evolving needs of individuals aging with Cerebral Palsy in Hawai'i. By collecting and analyzing data on mobility, pain, communication, and resource needs, we aim to improve the quality of life for this population and inform better care practices, policies, and services at both the local and national levels.

IV. Financial

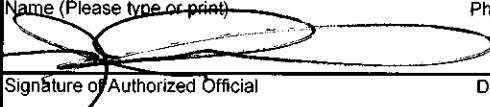
Budget

The following forms detail the cost of the request:

BUDGET REQUEST BY SOURCE OF FUNDS

Period: July 1, 2025 to June 30, 2026

Applicant: United Cerebral Palsy Association of Hawaii

BUDGET CATEGORIES	Total State Funds Requested (a)	Total Federal Funds Requested (b)	Total County Funds Requested (c)	Total Private/Other Funds Requested (d)
A. PERSONNEL COST				
1. Salaries	68,000			
2. Payroll Taxes & Assessments				
3. Fringe Benefits				
TOTAL PERSONNEL COST	68,000			
B. OTHER CURRENT EXPENSES				
1. Airfare, Inter-Island				
2. Insurance				
3. Lease/Rental of Equipment				
4. Lease/Rental of Space				
5. Staff Training				
6. Supplies	500			
7. Telecommunication				
8. Utilities				
9. Contracted Services	10,000			
10. Parking and Mileage	500			
11. Advertising/Promotion	1,000			
12.				
13.				
14.				
15.				
16.				
17.				
18.				
19.				
20.				
TOTAL OTHER CURRENT EXPENSES	12,000			
C. EQUIPMENT PURCHASES				
D. MOTOR VEHICLE PURCHASES				
E. CAPITAL				
TOTAL (A+B+C+D+E)	80,000			
SOURCES OF FUNDING		Budget Prepared By:		
(a) Total State Funds Requested	80,000	Sean Sumida (808) 532-5744		
(b) Total Federal Funds Requested		Name (Please type or print) Phone		
(c) Total County Funds Requested				
(d) Total Private/Other Funds Requested				
TOTAL BUDGET	80,000	Signature of Authorized Official Date John Van S Nishida, Executive Director Name and Title (Please type or print)		

BUDGET JUSTIFICATION - PERSONNEL SALARIES AND WAGES

Period: July 1, 2025 to June 30, 2026

Applicant: United Cerebral Palsy Association of Hawaii

POSITION TITLE	FULL TIME EQUIVALENT	ANNUAL SALARY A	% OF TIME ALLOCATED TO GRANT REQUEST B	TOTAL STATE FUNDS REQUESTED (A x B)
Fundraising and Program Coordinator	0.5	\$26,000.00	100.00%	\$ 26,000.00
Education & Community Outreach Program Manager	0.5	\$21,000.00	100.00%	\$ 21,000.00
Education & Community Outreach Program Manager	0.5	\$21,000.00	100.00%	\$ 21,000.00
				\$ -
				\$ -
				\$ -
				\$ -
				\$ -
				\$ -
				\$ -
				\$ -
				\$ -
				\$ -
				\$ -
				\$ -
TOTAL:				68,000.00
JUSTIFICATION/COMMENTS:				

BUDGET JUSTIFICATION - EQUIPMENT AND MOTOR VEHICLES

Period: July 1, 2025 to June 30, 2026

Applicant: United Cerebral Palsy Association of

DESCRIPTION EQUIPMENT	NO. OF ITEMS	COST PER ITEM	TOTAL COST	TOTAL BUDGETED
N/A			\$ -	
			\$ -	
			\$ -	
			\$ -	
			\$ -	
TOTAL:				
JUSTIFICATION/COMMENTS:				

DESCRIPTION OF MOTOR VEHICLE	NO. OF VEHICLES	COST PER VEHICLE	TOTAL COST	TOTAL BUDGETED
N/A			\$ -	
			\$ -	
			\$ -	
			\$ -	
			\$ -	
TOTAL:				
JUSTIFICATION/COMMENTS:				

BUDGET JUSTIFICATION - CAPITAL PROJECT DETAILS

Period: July 1, 2025 to June 30, 2026

Applicant: United Cerebral Palsy Association of

FUNDING AMOUNT REQUESTED						
TOTAL PROJECT COST	ALL SOURCES OF FUNDS RECEIVED IN PRIOR YEARS		STATE FUNDS REQUESTED	OTHER SOURCES OF FUNDS REQUESTED	FUNDING REQUIRED IN SUCCEEDING YEARS	
	FY:2023-2024	FY:2024-2025	FY:2025-2026	FY:2025-2026	FY:2026-2027	FY:2027-2028
PLANS	N/A	N/A	N/A	N/A	N/A	N/A
LAND ACQUISITION	N/A	N/A	N/A	N/A	N/A	N/A
DESIGN	N/A	N/A	N/A	N/A	N/A	N/A
CONSTRUCTION	N/A	N/A	N/A	N/A	N/A	N/A
EQUIPMENT	N/A	N/A	N/A	N/A	N/A	N/A
TOTAL:						
JUSTIFICATION/COMMENTS:						

GOVERNMENT CONTRACTS, GRANTS, AND / OR GRANTS IN AID

Applicant: United Cerebral Palsy Association of Hawaii

Contracts Total: 8,076,000

	CONTRACT DESCRIPTION	EFFECTIVE DATES	AGENCY	GOVERNMENT ENTITY (U.S./State/Hawaii/ Honolulu/ Kauai/ Maui County)	CONTRACT VALUE
1	State of Hawaii ASO Log 22-018	2022/2023	Department of Health	State	\$ 1,000,000.00
2	State of Hawaii ASO Log 22-018	2023/2024	Department of Health	State	\$ 1,000,000.00
3	City and County GIA CT-DCS-2500064	2023/2024	City & County Grants in Aid	Honolulu County	\$ 150,000.00
4	State of Hawaii ASO Log 22-018	2024/2025	Department of Health	State	\$ 1,000,000.00
5	City and County GIA CT-DCS-2500070	2024/2025	City & County Grants in Aid	Honolulu County	\$ 125,000.00
6	State of Hawaii HTH 560-CG-POS 26-03	2025/2026	Department of Health	State	\$ 1,341,000.00
7	State of Hawaii HTH 560-CG-POS 26-04	2025/2026	Department of Health	State	\$ 1,200,000.00
8	State of Hawaii HTH 560-CG-POS 26-05	2025/2026	Department of Health	State	\$ 1,180,000.00
9	State of Hawaii HTH 560-CG-POS 26-08	2025/2026	Department of Health	State	\$ 950,000.00
10	City and County	Pending	City & County Grants in Aid	Honolulu County	\$ 130,000.00
11					
12					
13					
14					
15					
16					
17					
18					
19					
20					
21					
22					
23					
24					
25					
26					
27					
28					
29					

Quarterly funding for the fiscal year 2026:

Quarter 1	Quarter 2	Quarter 3	Quarter 4	Total Grant
\$17,000	\$17,000	\$18,000	\$28,000	\$80,000

Other sources of funding for fiscal year 2026:

- City and County Grants in Aid of \$130,000

State and Federal tax credits granted within the prior three years:

N/A

All federal, state & county government contracts, grants, and grants in aid granted within the past three years.

- State of Hawaii: ASO Log 22-018 - 2022/2023
- State of Hawaii: ASO Log 22-018 - 2023/2024
- City and County: GIA CT-DCS-2500064 - 2023/2024
- State of Hawaii: ASO Log 22-018 - 2024/2025
- City and County: GIA CT-DCS-2500070 - 2025/2026
- State of Hawaii: HTH 560-CG-POS 26-03 - 2025/2026
- State of Hawaii: HTH 560-CG-POS 26-04 - 2025/2026
- State of Hawaii: HTH 560-CG-POS 26-05 - 2025/2026
- State of Hawaii: HTH 560-CG-POS 26-08 - 2025/2026
- City and County: Pending - 2025/2026

Balance of unrestricted current assets:

\$856,684.57 as of December 31, 2024

V. Experience and Capability

Necessary Skills and Experience:

United Cerebral Palsy Association of Hawaii (UCPAH) brings together an exceptional and highly experienced team to ensure the successful completion of this grant study. The collective expertise and dedication of this team, combined with their investment in the field of Cerebral Palsy and disability services, make UCPAH uniquely qualified to undertake this important grant study and service initiative. Below is an outline of the team's experience and qualifications:

Dr. Stephen Dantzig, Education and Outreach Program Manager

Dr. Stephen Dantzig is a distinguished psychologist with an extensive background in working with individuals with disabilities, particularly those with Cerebral Palsy. He earned his Doctor of Psychology degree from the Rutgers University Graduate School of Applied and Professional Psychology in 1991. His dissertation focused on the development of higher cognitive functioning in children with Cerebral Palsy and Spina Bifida, demonstrating early expertise in this field.

Dr. Dantzig has an impressive 38-year career as a School Psychologist in various states, including New York, New Jersey, California, and Hawai'i. His tenure as the Leeward District School Psychologist for the State of Hawai'i spanned 20 years. In addition to his role as a practicing psychologist, Dr. Dantzig has been an educator and researcher, authoring 15 books and over 100 articles. His autobiography, *Get Up, Your Bus Is Here: Living MY Life with Cerebral Palsy: Trials, Tribulations, and Triumphs* reveals his connection to the challenges faced by individuals with disabilities, as he has lived with Cerebral Palsy himself. His passion for this grant study is driven by his professional experience and personal journey.

**Brian Kajiya, Instructor, Department of Special Education,
University of Hawai'i**

Brian Kajiyama is an esteemed instructor at the University of Hawai'i Manoa, specializing in Special Education. He holds a Master's Degree in Education from the University of Hawai'i, and his professional work focuses on improving access and educational outcomes for individuals with disabilities, particularly those who use augmentative communication devices. Brian, who has Cerebral Palsy and uses a power wheelchair for mobility, brings invaluable lived experience to his work. He has contributed significantly to the field through publications and presentations at conferences, with a particular focus on augmentative communication devices. His active involvement with UCPAH, including volunteer work at fundraising events, showcases his deep commitment to improving the lives of individuals with disabilities.

Dr. Joy Mahiko, Assistant Professor, University of Hawai'i-West O'ahu

Dr. Joy Mahiko, an Assistant Professor specializing in Special Education at UH-West O'ahu, brings both professional expertise and a personal dedication to the grant study. She earned her doctorate from Capella University and has focused much of her career on advocating for inclusive education, equitable access, and improved quality of life for individuals with disabilities. Dr. Mahiko's background as a special education teacher and coordinator in workforce development enables her to understand the challenges faced by individuals with disabilities across their lifespan. Her work emphasizes dignity, choice, and independence for all, aligning closely with UCPAH's mission to empower individuals with disabilities to live fulfilling lives within their communities.

Mr. John Nishida, Executive Director, United Cerebral Palsy Association of Hawai'i

Mr. John Nishida is a highly experienced leader with over 26 years of service in the Department of Defense and an additional 30 years serving on the Board of Directors of United Cerebral Palsy Hawai'i (UCPAH). Under his leadership, UCPAH has expanded its services to a more diverse group of individuals with disabilities, including young children. As the Executive

Director, Mr. Nishida brings a wealth of administrative expertise to the team and will ensure that this grant study is completed efficiently and effectively. His commitment to UCPAH's mission is further exemplified by his focus on meeting the needs of individuals with Cerebral Palsy in Hawai'i and improving access to necessary services.

Facilities and Infrastructure:

UCPAH operates out of its office at 420 Waikamilo Road, which is fully equipped to support the team in completing this grant study. The facilities offer the necessary infrastructure, including administrative and operational support, to facilitate the research team's work. The location provides an ideal environment for collaboration, research, and outreach efforts, ensuring that all aspects of this grant study are well-supported.

Conclusion

The team assembled by the United Cerebral Palsy Association of Hawai'i is highly qualified, with a blend of professional experience, academic expertise, personal commitment, and administrative support. This combination of skills ensures that this grant study will be completed with the utmost proficiency and dedication. The team is deeply invested in this grant study's successful outcome, which aims to enhance services and research that directly benefit individuals with Cerebral Palsy and other disabilities in Hawai'i.

VI. Personnel: Project Organization and Staffing

Proposed staffing and qualification:

The staffing requested for this grant study is minimal. United Cerebral Palsy Association of Hawaii presently employs Dr. Steven Dantzig as the Education and Outreach Manager and Mr. John Nishida as the Executive Director.

As proposed, this grant study is a research paper designed to identify, quantify, and qualify those with cerebral palsy and the effects of aging. The staffing requirement is minimal including three part-time staff members working 20 hours per week.

The three part-time staff members are highly qualified:

Brian Kajiyama is an instructor in the Special Education Department at the University of Hawai'i Manoa campus. He earned his Master's Degree in Education from the University of Hawai'i in 2007. He has Cerebral Palsy and uses a power wheelchair for mobility and augmentative communication devices to interact with his students and peers. Brian has been active within the Department of Special Education at the University of Hawai'i at Manoa for over 20 years. Brian's advocacy and work with and for individuals with disabilities, including the use of augmentative communication devices, are evident in his long list of journal publications and conference appearances. Brian and his students have long been visible volunteers at United Cerebral Palsy Hawai'i fundraising events. His outside interests include video poetry and the University of Hawai'i football program.

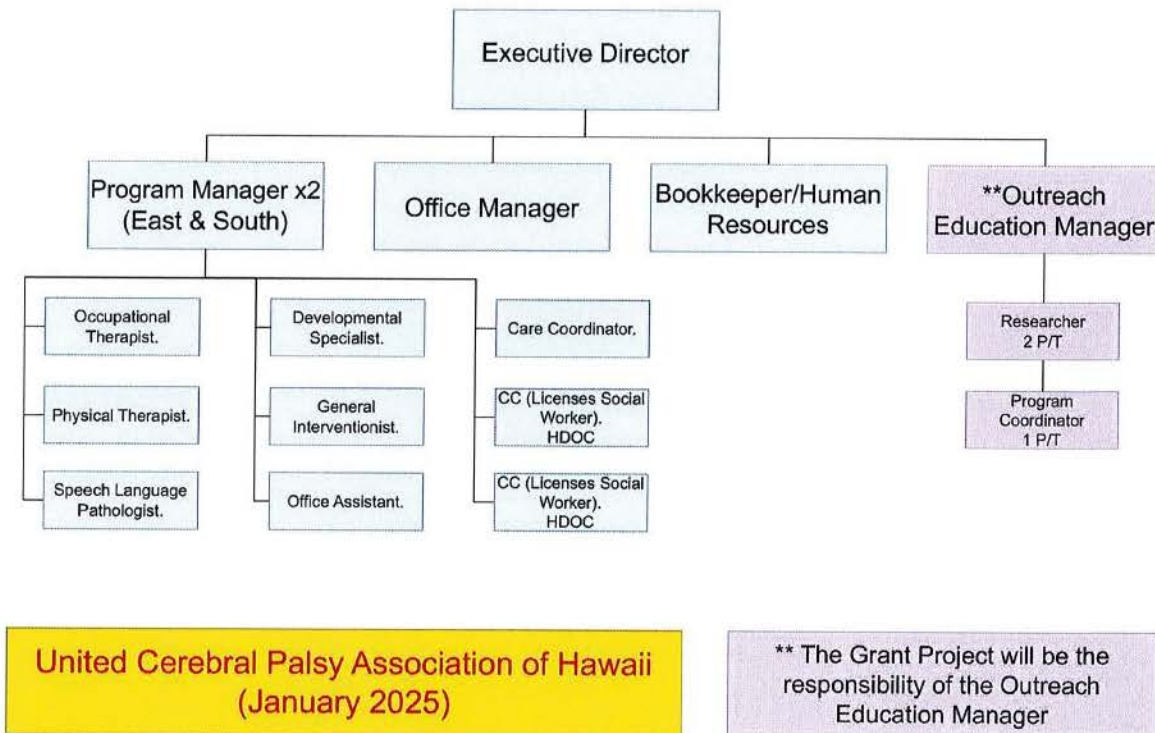
Joy Mahiko, Ph.D. is an Assistant Professor at UH-West O'ahu, specializing in Special Education. She earned her doctorate from Capella University. With a focus on inclusivity and quality teacher preparation, her work centers on improving the quality of life for individuals with disabilities

through enhanced inclusion to thrive in their communities. Her work also extends to advocating for fair wages, equitable access, and greater independence for individuals with disabilities.

As a former special education teacher and workforce development coordinator, Joy gained invaluable insights into the unique perspectives of children and adults with disabilities. Their lived experiences and resilience have inspired her commitment to fostering dignity, choice, and independence for all individuals, creating a more inclusive society where everyone can contribute and thrive. Her professional and personal dedication aligns closely with the mission of United Cerebral Palsy, emphasizing the importance of breaking barriers and empowering individuals with disabilities to live life without limits.

Sean Sumida graduated from the University of Hawaii at Manoa, holding a degree in Management Information Systems (MIS). His role in this grant study will be to assist with administrative tasks and support technical needs. His background in MIS equips him with a strong foundation in both business and technology, allowing him to bridge the gap between administrative requirements and technical solutions effectively. He is committed to ensuring smooth operations and helping the project succeed through efficient coordination, problem-solving, and timely reporting.

Organization Chart:



Compensation:

The three highest paid officer's annual salaries are as follows:

- Executive Director: \$125,000-\$135,000
- Program Manager (East): \$75,000-\$79,000
- Program Manager (South): \$75,000-\$79,000

VII. Other

Litigation:

N/A

Licensure or Accreditation:

N/A

Private education instruction:

N/A

Future sustainability plan:

For the 2026 grant year, the results will provide a database of aging consumers for UCP Hawai'i and partner organizations to follow offer social opportunities, and share resources for ongoing care. Data regarding the impact of aging with Cerebral Palsy will be collected and shared with the State of Hawai'i Department of Health to improve physical and mental health services. Community recreational resources will be approached to continue access for adults with Cerebral Palsy. Data will be shared with the State and others to address the communication needs of those aging with Cerebral Palsy. An in-depth review and data analysis will be completed providing United Cerebral Palsy, other community service providers, and the State of Hawaii Department of Health with a comprehensive analysis of the adult and senior cerebral palsy community needs in Hawaii. Data will also be sent to the Center for Disease Control and Cerebral Palsy National Organization.

United Cerebral Palsy Association of Hawaii is committed to this research project to truly determine the way ahead and future needs and services for adults with cerebral palsy. We have determined that to complete the research and analysis will require another six-month compilation of the data

to complete. This will be followed by the writing of the journal article. UCPAH will certainly apply for a follow-up grant in 2027 to complete the project. However, if not awarded, UCPAH's objective is to complete the project to provide meaningful and useful data to the State of Hawaii Departments serving people with disabilities. Publishing the research in peer-reviewed journals and sharing the information with other service organizations and government agencies will better help the needs of the Hawaii community.