

**THE THIRTIETH LEGISLATURE**  
**APPLICATION FOR GRANTS**  
**CHAPTER 42F, HAWAII REVISED STATUTES**

Type of Grant Request:

☐

Operating

☐

Capital

Legal Name of Requesting Organization or Individual:    Db:

Amount of State Funds Requested: \$ \_\_\_\_\_

Brief Description of Request (Please attach word document to back of page if extra space is needed):

Amount of Other Funds Available:

State:            \$ \_\_\_\_\_

Federal:        \$ \_\_\_\_\_

County:        \$ \_\_\_\_\_

Private/Other: \$ \_\_\_\_\_

Total amount of State Grants Received in the Past 5  
Fiscal Years:

\$ \_\_\_\_\_

Unrestricted Assets:

\$ \_\_\_\_\_

New Service (Presently Does Not Exist): ☐    Existing Service (Presently in Operation): ☐

Type of Business Entity:

☐

501(C)(3) Non Profit Corporation

☐

Other Non Profit

☐

Other

Mailing Address:

City:

State:

Zip:

Contact Person for Matters Involving this Application

Name:

Title:

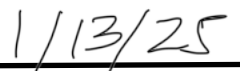
Email:

Phone:



Authorized Signature

Name and Title



Date Signed



STATE OF HAWAII  
STATE PROCUREMENT OFFICE

**CERTIFICATE OF VENDOR COMPLIANCE**

This document presents the compliance status of the vendor identified below on the issue date with respect to certificates required from the Hawaii Department of Taxation (DOTAX), the Internal Revenue Service, the Hawaii Department of Labor and Industrial Relations (DLIR), and the Hawaii Department of Commerce and Consumer Affairs (DCCA).

**Vendor Name:** LANAI ACADEMY OF PERFORMING ARTS, INC.

**Issue Date:** 01/03/2025

**Status:** **Compliant**

Hawaii Tax#: 76457879-01  
New Hawaii Tax#: GE-1613412352-01  
FEIN/SSN#: XX-XXX4345  
UI#: XXXXXX1794  
DCCA FILE#: 270828

Status of Compliance for this Vendor on issue date:

Form	Department(s)	Status
A-6	Hawaii Department of Taxation	Compliant
8821	Internal Revenue Service	Compliant
COGS	Hawaii Department of Commerce & Consumer Affairs	Exempt
LIR27	Hawaii Department of Labor & Industrial Relations	Compliant

**Status Legend:**

Status	Description
Exempt	The entity is exempt from this requirement
Compliant	The entity is compliant with this requirement or the entity is in agreement with agency and actively working towards compliance
Pending	A status determination has not yet been made
Submitted	The entity has applied for the certificate but it is awaiting approval
Not Compliant	The entity is not in compliance with the requirement and should contact the issuing agency for more information

**DECLARATION STATEMENT OF  
APPLICANTS FOR GRANTS PURSUANT TO  
CHAPTER 42F, HAWAII REVISED STATUTES**


The undersigned authorized representative of the applicant certifies the following:

- 1) The applicant meets and will comply with all of the following standards for the award of grants pursuant to Section 42F-103, Hawaii Revised Statutes:
  - a) Is licensed or accredited, in accordance with federal, state, or county statutes, rules, or ordinances, to conduct the activities or provide the services for which a grant is awarded;
  - b) Complies with all applicable federal and state laws prohibiting discrimination against any person on the basis of race, color, national origin, religion, creed, sex, age, sexual orientation, or disability;
  - c) Agrees not to use state funds for entertainment or lobbying activities; and
  - d) Allows the state agency to which funds for the grant were appropriated for expenditure, legislative committees and their staff, and the auditor full access to their records, reports, files, and other related documents and information for purposes of monitoring, measuring the effectiveness, and ensuring the proper expenditure of the grant.
- 2) If the applicant is an organization, the applicant meets the following requirements pursuant to Section 42F-103, Hawaii Revised Statutes:
  - a) Is incorporated under the laws of the State; and
  - b) Has bylaws or policies that describe the manner in which the activities or services for which a grant is awarded shall be conducted or provided; and
- 3) If the applicant is a non-profit organization, it meets the following requirements pursuant to Section 42F-103, Hawaii Revised Statutes:
  - a) Is determined and designated to be a non-profit organization by the Internal Revenue Service; and
  - b) Has a governing board whose members have no material conflict of interest and serve without compensation.
- 4) The use of grant-in-aid funding complies with all provisions of the Constitution of the State of Hawaii (for example, pursuant to Article X, section 1, of the Constitution, the State cannot provide "... public funds ... for the support or benefit of any sectarian or nonsectarian private educational institution...").

Pursuant to Section 42F-103, Hawaii Revised Statutes, for grants used for the acquisition of land, when the organization discontinues the activities or services on the land acquired for which the grant was awarded and disposes of the land in fee simple or by lease, the organization shall negotiate with the expending agency for a lump sum or installment repayment to the State of the amount of the grant used for the acquisition of the land.

Further, the undersigned authorized representative certifies that this statement is true and correct to the best of the applicant's knowledge.

\_\_\_\_\_  
(Typed Name of Individual or Organization)

  
\_\_\_\_\_  
(Signature)

\_\_\_\_\_  
(Date)

\_\_\_\_\_  
(Typed Name)

\_\_\_\_\_  
(Title)

## II. Background and Summary

### 1. A brief description of the applicant's background

The Lanai Academy of Performing Arts (LAPA) was established in 2013, and became a non-profit 501(c)3 as of September 2016. LAPA is located in the community of Lanai City, Hawaii, and services all of the island's school-aged children. There are about 550 students at Lanai High and Elementary School. Yearly, LAPA usually has approximately 120-140 children involved in its programming, which includes performing arts classes, theatrical productions, workshops, and performing arts camps. From 2020-2022, due to COVID restrictions LAPA shifted its programming to mostly small outdoor and virtual classes, as well as virtual workshops with various guest artists. In 2023, LAPA for the first time since COVID, was able to do two live productions: *The Claw* and *Bad Auditions by Bad Actors* for the Lanai Community. In 2024, LAPA held its first ever production featuring adults and kids together—*Jo and the Gigalytes*,—an original musical co-written by LAPA's Executive Director, Matt Glickstein.

Mission statement:

The Lanai Academy of Performing Arts (LAPA) is devoted to enriching Lanai through the arts, fostering creativity, self-confidence, and teamwork. We provide diverse programming to inspire personal growth, empower individuals, and celebrate our island's stories through the joy of performance.

### 2. The goals and objectives related to the request

At LAPA, we are dedicated to fostering a vibrant hub of creativity and collaboration on Lanai. By partnering with local nonprofits and performing arts groups across Hawaii, we aim to expand our diverse programming and provide inclusive opportunities for community members of all ages.

#### **Goal 1: provide a diverse range of performing arts programming with easy and affordable access for all Lanai youth**

Objective 1: Offer a variety of classes and performance opportunities for students ages 5-18. Make LAPA as accessible as possible by keeping class fees at \$20/session and \$100/live production, providing need-based financial aid and incentive

Action Steps:

- Hire multiple staff members skilled in various areas of performing arts
- Offer free one-two week trial for students to try out classes/productions before payment
- Advertise program through social media, flyers, website, word of mouth and outreach through Lanai High and Elementary School and churches

Evaluate/measure success by:

- Amount of student registrations/participants in the programs (goal of at least 100 students participating in LAPA programming for 2025-2026)
- Student and parent feedback through pre and post surveys
- Economic impact through employment of LAPA staff members

**Goal 2: Engage and enliven the Lanai community with live stage productions and showcases**

Objective 2: Produce and perform at least one live musical production in 2025-2026. Also feature a number of showcases from the individual performing arts classes at the conclusion of the 8 week sessions.

**Action steps:**

- Make ticket prices “suggested donation” only, so all members of the Lanai community can attend performances
- Do a dress rehearsal specifically for kupuna of Lanai
- Advertise performances and showcases through social media, flyers, website, etc.

**Evaluate/measure success:**

- Audience size/feedback at live events (goal of reaching at least 300 Lanai residents through performances and showcases in 2025-2026)
- Economic impact—through Playbill ads placed by local businesses, working with local vendors at live events

**Goal 3: Provide opportunities for students to experience theater outside of Lanai**

Objective 3: Travel with students to Molokai for performing arts camp (spring 2025), and have Molokai students travel to Lanai for performing arts camp (fall of 2025).

**Action steps:**

- collaborate and work with Hokulani Children’s Theatre of Molokai (CTOM) in planning performing arts camps
- perform a showcase both on Molokai and Lanai at the conclusion of the camp
- perform joint production of *Flight of the Mothman* (April/June 2025)

**3. The public purpose and need to be served**

Lanai, one of the most geographically isolated islands in Hawai‘i, is home to approximately 3,000 residents. The island’s remote location, limited resources, and restricted access to arts and cultural education present unique challenges. This isolation has a notable impact on the opportunities available to youth, resulting in a significant gap in artistic development compared to neighboring islands such as Maui and O‘ahu, where arts programs are more integrated into schools and communities. LAPA stands as the sole after-school performing arts program of its kind on Lanai.

LAPA is dedicated to providing equitable access to performing arts opportunities for residents of all ages on the remote and underserved island of Lanai. Recognizing the significant barriers to arts education in this community, LAPA's programs are meticulously designed to eliminate financial, geographic, and cultural obstacles, ensuring that children from diverse backgrounds can engage in performing arts experiences.

Lanai High and Elementary School, with 550 students, lacks regular arts classes. Kerri Glickstein (wife of LAPA Executive Director, Matt Glickstein) who taught band from 2008 to 2023, made a career change and the school did not hire a replacement music teacher. Consequently, the school no longer offers band, drama, or choir. In response, LAPA introduced

a modern band class modeled after Glickstein's, providing an after-school music opportunity. Due to the absence of a drama club at the school, LAPA launched the LAPA Teen Actors Club in 2024, meeting twice a month for activities and movie nights.

LAPA's vision is to include all students in performing arts. To achieve this, LAPA keeps dues affordable for Lanai families. Live musical production tuition is \$100 per child, compared to \$800 on other islands. LAPA classes, held in 4-6 week sessions, cost only \$20 per student. LAPA offers payment plans and fundraising options for financial aid.

LAPA caters to people of all ages in Lanai:

- LAPA provides various performing arts classes for children, including: modern band, singing, dance, creative writing, acting, and video production.

- Students can participate in at least one live musical production annually.

- LAPA offers classes and workshops for adults, with creative writing offered in 2024 and more classes planned. Adults can also join select musical productions and plays.

- Advanced and older students can take high-level classes in acting, dance, and music, as well as technical theater skills like set design, stage managing, and sound production.

-In 2024, LAPA traveled to Molokai for a three-day, two-night performing arts camp with Hokulani Children's Theatre of Molokai (CTOM). Molokai students also traveled to Lanai for a similar experience in October, where guest instructors from Oahu non-profit KAPA Mag led workshops in acting, modeling, dance, & singing. LAPA hopes to continue building the relationship with CTOM & plan yearly collaborations.

LAPA has several core strategies to address the greatest disparities in the Lanai community:

**\*\*Low-Cost Programming:\*\***

LAPA provides a variety of performing arts classes at only \$20 per class, at least one theatrical production per year (\$100 per student, financial aid offered), workshops, and performing arts camps. Before charging any fee, to encourage new students to participate, LAPA allows students to try classes or productions for at least one week before making a financial commitment.

**\*\*Inclusive Programming for Everyone:\*\***

Our programs are designed to be inclusive of all ages, abilities, and backgrounds. LAPA programs offer a variety of classes in all areas of performing arts education that cater to different interests to broaden participation and engagement. Surveys are conducted following each class to ascertain student preferences. Based on LAPA staffing availability and the expertise of instructors, future classes are tailored to student interests.

For the first time in 2024, adults participated in a LAPA musical production, *Jo and the Gigalytes*. The production featured six adult cast members, and LAPA intends to continue developing programming specifically for adults (classes/workshops) and to include adults in future theatrical productions.

**\*\*Easily Accessible Programs:\*\***

LAPA holds all of its programming at Lanai Union Church, which is conveniently located in the heart of Lanai City and within walking distance of the school and the majority of the community. This accessibility enables more families to participate. Lanai Union Church offers

multiple spaces at a reduced cost, which assists LAPA in keeping tuition and class fees affordable.

**\*\*Partnerships to Enhance Equitable Access:\*\***

LAPA actively collaborates with local organizations to expand access to performing arts education on Lanai. These partnerships facilitate resource sharing, expertise exchange, and increased reach for children.

**\*\*Hokulani Children's Theatre of Molokai (CTOM) collaboration\*\***

In late 2023, LAPA began mentoring CTOM, which facilitated their transition to a non-profit 501(c)3 organization. This partnership has resulted in collaborative performing arts camps, productions, and cross-island exchanges between youth from Molokai and Lanai. These initiatives provide our students with exposure to diverse techniques, professional training, and mentorship opportunities.

In March 2024, HCTOM and LAPA jointly organized a three-day performing arts camp on Molokai, involving 46 children. Costs for the camp were generously funded by the Maui Office of Economic Development, ensuring its accessibility to all students and chaperones. Subsequently, from October 11-13, a three-day camp was held on Lanai, with 21 Molokai students and 28 Lanai students participating. LAPA and CTOM collaborated with KAPA Mag, a non-profit organization based on Oahu. Four instructors from KAPA Mag came to Lanai to facilitate workshops in acting, modeling, singing, and dance.

The camp culminated in a showcase performance for the Lanai community, showcasing the talents of students from LAPA and CTOM. LAPA was able to charge students only \$25 for participation thanks to further support through the Maui County grant.

Following the joint performance, CTOM students also presented *Jane and the Giant Peach* for the Lanai audience, a production they had recently staged on Molokai.

**4. Describe the target population to be served**

LAPA primarily targets Lanai's youth, ages 5 to 18. In 2025 and beyond, LAPA is also expanding programming to include adults, both with specific classes and workshops, and roles in live productions.

LAPA typically separates classes and theatrical productions into different age groups—one production is mostly targeted at grades K-8, and students grades 6-12 do one theatrical production per year. LAPA's performing arts classes are also broken down into levels and age groups. In 2024, LAPA began the LAPA Teen Actors Club to encourage greater participation from middle and high school students. There is no fee to join, and the club holds events twice per month.

For all of LAPA's productions, there are no formal tickets sold, just a "suggested donation" at the door of \$10 per adult and \$5 per student.

**5. Describe the geographic coverage**

Maui County: All of LAPA's classes and performances currently take place in Lanai City. Performances and showcases are held at Lanai High and Elementary School gym or cafeteria. Rehearsals are mainly held at the Lanai Union Church, with some rehearsals also taking place at the school. LAPA intends to travel to Molokai once per year for a performing arts camp in collaboration with the Hokulani Children's Theatre of Molokai (CTOM).

California: Once every two years (tentative plans for February 2027), LAPA attends the Junior Theater Festival West in Sacramento, California.

### **III. Service Summary and Outcomes**

#### **1. Describe the scope of work, tasks, and responsibilities**

The entire staff of the Lana'i Academy of Performing Arts (LAPA), which includes an Executive Director/Music Director, two Acting Directors, an Assistant Director, and a Choreographer, will play an integral role in the proposed grant activities. We anticipate that approximately 120 to 140 individuals will be directly served during the 12-month grant period. This projection includes an estimated 30 to 40 participants in LAPA's musical production and 80 to 100 individuals engaged in our performing arts classes, camps, and workshops.

LAPA's programming operates primarily in conjunction with the public school calendar. The fall semester commences in early August, continuing until winter break in late December. During this period, LAPA offers a diverse range of performing arts classes for all ages, structured in 6 to 8-week sessions. To encourage participation, the first week of classes is provided free of charge, allowing students to experience the offerings before making a financial commitment. Additionally, LAPA collaborates with Hokulani Children's Theatre of Molokai to host a performing arts camp on Lanai, typically scheduled for October.

In the spring semester, LAPA presents its annual musical production. Prior to auditions, we conduct a 1 to 2-week workshop that introduces students to the show, helping them become familiar with the material and feel confident in the audition process. Similar to our classes, this workshop will also be offered at no cost. Following the workshop, auditions are held to cast the show, leading to an intensive 3-month rehearsal period with sessions occurring 2 to 3 times per week. The culmination of this process includes 2 to 4 performances, typically scheduled for late May or early June, depending on facility availability. Furthermore, our spring programming includes a performing arts camp on Molokai in collaboration with Hokulani Children's Theatre of Molokai, which is usually held during spring break in March.

#### **2. Provide a projected annual timeline for accomplishing the results or outcomes of the service**

Although the Grant Activity begins in FY26, LAPA will begin work many months prior. Rehearsals and classes will be held continuously every month, with a summer break from mid-June through the end of July.

June-July 2025: Summer break

August-October 2025: First session of 8 week classes, which will include at least three different offerings. Past classes have included: music/songwriting, dance, intro to theater, special effects make up, improvisation screenwriting, filmmaking. Showcase for parents at the end of session. Begin possible 6th-12th grade/adult production. LAPA Teen Actors club events (2x per month). Performing arts camp on Lanai with Hokulani Children's Theatre of Molokai.

October (after school fall break)-December 2025: Second session of 8 week classes, which will include at least three different offerings. Showcase for parents at the end of session. Continue possible 6th-12th grade/adult production. LAPA Teen Actors club events (2x per month).



January 2026

Workshop for musical production. LAPA Teen Actors club events (2x per month).

February 2026

Auditions, rehearsals begin for musical production. LAPA Teen Actors club events (2x per month).

March 2026

Rehearsals for musical production. LAPA Teen Actors club events (2x per month).  
Performing arts camp on Molokai with Hokulani Children's Theatre of Molokai.

April 2026

Rehearsals for musical production. LAPA Teen Actors club events (2x per month).

May 2026

Rehearsals for musical production. LAPA Teen Actors club events (2x per month).

June 2026

Performances for musical production. Summer break when performances conclude.

3. Describe its quality assurance and evaluation plans for the request. Specify how the applicant plans to monitor, evaluate, and improve their results; and

LAPA uses various methods to assess program effectiveness and ensure equitable access to the performing arts for all Lanai residents. It monitors participation, conducts surveys, and collects qualitative feedback.

LAPA monitors its programs to ensure a diverse and representative sample of Lanai's youth. LAPA offers performing arts classes for all ages. A survey after *Jo and the Gigalytes* showed 100% of parents that their children gained confidence and teamwork skills, with 80% also noting a positive impact on their children's academic performance.

LAPA also collects qualitative feedback through informal discussions with students, parents, and community members. This more informal approach provides more nuanced insights into the experiences of our participants and elucidates the long-term benefits of our programs.

LAPA actively evaluates its programming and adapts based on feedback from parents and students. This feedback loop enables LAPA to evolve and collaborate effectively to ensure equitable access to the arts for all.

4. List the measure(s) of effectiveness that will be reported to the State agency through which grant funds are appropriated (the expending agency).

- Quantities of enrolled students, new students, rate of retention
- activities planned and executed—number/variety of classes offered, live theatrical productions, performances, performing arts camps, festivals
- Engagement with Lanai community—number of audience members in attendance at workshops, showcases and performances
- Parent, student, and audience surveys following performances
- Testimonials from LAPA parents

#### IV. Financial

1. See attached for the following:
  - a. Budget request by source
  - b. Personnel salaries and wages
  - c. Equipment and motor vehicles
  - d. Capital project details
  - e. Government contracts, grants, and grants in aid
2. Anticipated quarterly funding requests for the fiscal year 2026

Quarter 1	Quarter 2	Quarter 3	Quarter 4	Total Grant
\$6,250	\$6,250	\$6,250	\$6,250	\$25,000

3. Other funding sources being sought for FY26.

LAPA will be applying to numerous private foundations who have supported programs in past years, including (but not limited to):, Hawaii State Foundation for Culture and the Arts, McInerney Foundation, Atherton Family Foundation, Fred Baldwin Memorial Foundation, Jane Musser Rural Arts Fund, the Lanai Community Benefit Fund, and the Maui County Office of Economic Development. LAPA also has a guaranteed grant (2nd year of multi-year grant) of \$27,550 from the Hawaii Community Foundation's Equitable Access Arts & Culture grant.

4. List of all state and federal tax credits—NOT APPLICABLE
5. List of federal, state, and county contracts/grants/GIA—see attached
6. Balance of unrestricted current assets as of December 31, 2024: **\$90,471.70**

## V. Experience and Capacity

LAPA is the only after school performing arts program operating on Lanai. During the school year, LAPA typically operates two to three days per week, with approximately 9-10 hours of contact time. Exceptions to this are in weeks leading up to performances, where rehearsals can stretch to 4-5 days per week, with longer rehearsal times.

Listed are some of the key LAPA accomplishments:

- 2013 Original production of *Island Below the Star*, old Lanai movie theater
- 2013 Holiday performance with Brenna Whitaker, The Lodge at Koele
- 2014 Oahu field trip to see *Lion King the Musical*  
Workshop with *Lion King* professional touring cast members
- 2014 Production of *101 Dalmatians KIDS*
- 2014 Production of *Annie Jr.*
- 2014 Holiday performance with Brenna Whitaker, The Lodge at Koele
- 2015 Production of *Getting to Know...The Sound of Music*
- 2015 Maui field trip to see *Elf the Musical*, Iao Theater
- 2016 Production of *Shrek the Musical Jr.*
- 2016 Became a 501(c)3 non-profit entity
- 2017 *Lion King Jr.* production
- 2017 Field trip to Maui for MAPA/LAPA day
- 2017 Workshop with professional coach Sandra Beckwith
- 2018 *Aladdin Jr.* production
- 2018 Field trip to Maui for MAPA/LAPA day
- 2018 *Jungle Book KIDS* production
- 2019 **Junior Theater Festival performance, Sacramento, California. Group of 19 kids awarded Excellence in Acting. Matt Glickstein awarded Broadway Junior spirit award. County of Maui creates proclamation honoring Lanai students and directors.**
- 2019 Original production *Day of Conquest: A Story of Kaululā'au*
- 2020 *Frozen KIDS* performances (February 8-9)
- 2020 Virtual productions of *Moana Jr.*, *The Show Must Go Online*, and *10 Ways to Survive Quarantine*
- 2020 Acting, dance and songwriting classes offered (beginning in August)
- 2021 Songwriting, acting, dance, creative writing/screenwriting, and special effects make-up classes offered throughout the year. Virtual performance of *The Brother's Grimm Spectaculathon*
- 2022 LAPA students create a series of public service videos in collaboration with the Lanai Community Health Center on educating youth about dangers of vaping/electronic cigarette use
- 2022 LAPA resumes larger in person performing arts classes, including intro to theater (grades K-2, and 3-5), beginning acting/improvisation (grades 6-12). First showcase for live audience (Dec. 2022) since early 2020.

2023 Productions of *The Claw* (K-8) and *Bad Auditions* (grades 6-12).

2024 Original production *Jo and the Gigalytes*, first ever featuring adults and children together

2024 Performing arts camps on Molokai and Lanai with Hokulani Children's Theatre of Molokai

2025. Upcoming original joint production (with Hokulani CTOM) of *Flight of the Mothman*

2025: Upcoming performing arts camps with Hokulani CTOM (spring and fall)

Several testimonials best sum-up the impact of LAPA on the Lanai community:

"Both of my younger children have benefited tremendously from the performing arts opportunities with LAPA. LAPA is the only organization of its kind on the island and is a welcoming home for all children, offering a variety of activities over the years. There has been screen writing, theatrical makeup, singing, acting and other various workshops as well as travel to see other plays and workshops from other experts."

—Jennifer, LAPA parent

"LAPA has become an instrumental part of my daughter's life, as well as a large group of Lāna'i youth. Living on a small island, we have limited choices of extra-curricular activities other places offer. LAPA offers a creative, positive, safe and fun place for our children to not only act and dance, but gain self-confidence, learn teamwork and be part of group that gives back to our community. Our directors have given so much of their time to our children, it is truly a blessing! This program continues to grow and improve with each performance. I know that by my daughter being a member of LAPA, she has gained tools for life that we may not have taught her."

—Jenna, LAPA Parent/business owner

"LAPA gives the kids the opportunity to learn self-confidence and poise. It also allows for pathways in art and performing, while strengthening literacy capabilities in children that attend LAPA."

—Natalie, Director LHES Foundation

"There was a time that Cash (my son) was my dancing partner at gatherings. That didn't last as he got older, whether it be him getting older or not having as much confidence as before. Getting him into LAPA was like pulling teeth and I worried because sports wasn't working too well. I hoped he would soar. Soar he did, his confidence and reading went sky high! Not only that, I know he feels comfortable. Comfortable in his own skin and the way he is."

—Amy, LAPA parent

"There are many benefits for students in the general education and especially for students for special education. Because students with exceptionalities learn in a variety of ways, the kinesthetic, tactile, auditory, visual and multi-sensory approach learning environment that theatre offers gives our exceptional students a chance to learn and shine within the program. I love how the repetition of reading scripts for memorization not only encourages all children to learn to read, but often give all types of students a more confident voice. I've witnessed

students with dyslexia grow to become better readers with the motivation of being a part of LAPA. Studies show that exceptional students need multisensory approaches to learning which are easily accomplished through LAPA's continued effort to educate through the arts for all students."

—Jamie, LHES Special Education

"Aleka was always known to be a shy person who didn't like being the center of attention. Being in LAPA and the Lion King Jr has helped Aleka gain more confidence and courage in herself. It has also boosted her self-esteem. She has lost fear of being on stage and has also recognized the importance of working together as a team. Thank you again for having her be a part of LAPA."

—Norraine Pascua, LAPA parent

"My daughter Destinee joined LAPA last year and performed in two productions: Cinderella and Aladdin Junior. From her training in LAPA she is learning how to coordinate with other performers, and how to work as a team to reach a desired goal. All of this seems to be boosting her confidence and the confidence of her fellow performers. I believe her work in LAPA translated to the classroom where her teacher identified her as one of the leaders of the class."

—Phoenix Dupree, LAPA parent

"The LAPA program is a perfect complement to the academics offered in our school. Specifically, they further address many of the "soft skills" that are an integral part of whole child development and preparation for post-high school endeavors. A retired elementary teacher who regularly substitute teaches at our school related the tremendous change she has seen in some of our elementary school students who are a part of the LAPA program. She stated that the self-confidence and articulation skills in the LAPA students is so apparent; these students are no longer the quiet and timid students who previously would not raise their hands to volunteer for a task or to answer a question."

—Elton Kinoshita, former principal, Lanai High and Elementary School

"As a pastor of a congregation with a large group of youth, primarily from the island of Kosrae, LAPA's work is important for this community. It creates an outlet of expression that many youth in our community do not have. It provides a space for our youth to be goofy, to be themselves, and to find themselves. It offers them a place to find pride and confidence in themselves, something that many of our Kosraean youth struggle with."

—Ben Sheets, Pastor of Lanai Union Church

## 2. Facilities

From 2016-early 2020, LAPA held all rehearsals and performances at the Lanai High and Elementary School cafeteria, paying a rental fee to the Hawaii Department of Education for use of the facilities. Following the COVID pandemic, where classes were held outdoors and virtually, LAPA began using space at Lanai Union Church for rehearsals and performing arts classes, and plans on continuing to use this venue. All larger productions and performances are still currently held at the Lanai High and Elementary School gym or cafeteria.

## VI. Personnel: Project Organization and Staffing

LAPA currently has a 3-member Board of Directors, chaired by Natalie Ropa and a staff which consists of an Executive Director/Music Director, two acting directors, a choreographer, an assistant director, and a part-time costumer (for stage productions).

About the **LAPA staff**:

**Matt Glickstein** is the founder and Executive Director of the Lana'i Academy of Performing Arts (LAPA) and holds a Bachelor of Music in composition from the University of Redlands. He has served as Music Director for every LAPA musical (14) since the organization was formed in 2013. Matt was awarded the 2019 Broadway Junior Spirit award, one of the highest honors an individual can receive at the Junior Theater Festival. Matt has co-written four original musical productions for LAPA: *Island Below the Star* (2013), *Day of Conquest: A Story of Kaululā'au* (2019), *Jo and the Gigatytes* (2024), and *Flight of the Mothman* (2025).

Acting director **Christopher Komatsu** is a 2010 H.P. Baldwin Highschool Alum. He was an active member of both the Baldwin Theater Guild and Thespian Society. During high school, he was actively involved in nearly 20 productions. Chris taught an improv class for LAPA in the fall of 2022, directed the 2023 production of *Bad Auditions by Bad Actors* as well as the 2024 production of *Jo and the Gigatytes*.

Acting director **Adam Purdy** is a former LAPA member, and served as a student intern for several LAPA productions, including *The Jungle Book KIDS*. As a senior in high school, Adam directed and starred in a production of *Little Shop of Horrors*, which featured a cast predominantly of adults.

Following his high school graduation, Adam assumed the acting direction for LAPA's original production of *Day of Conquest: A Story of Kaululā'au*, while simultaneously pursuing his college education. Upon returning to Lanai due to the COVID-19 pandemic, Adam joined LAPA as an employee, directing several virtual productions and mentoring a student on her independent film project.

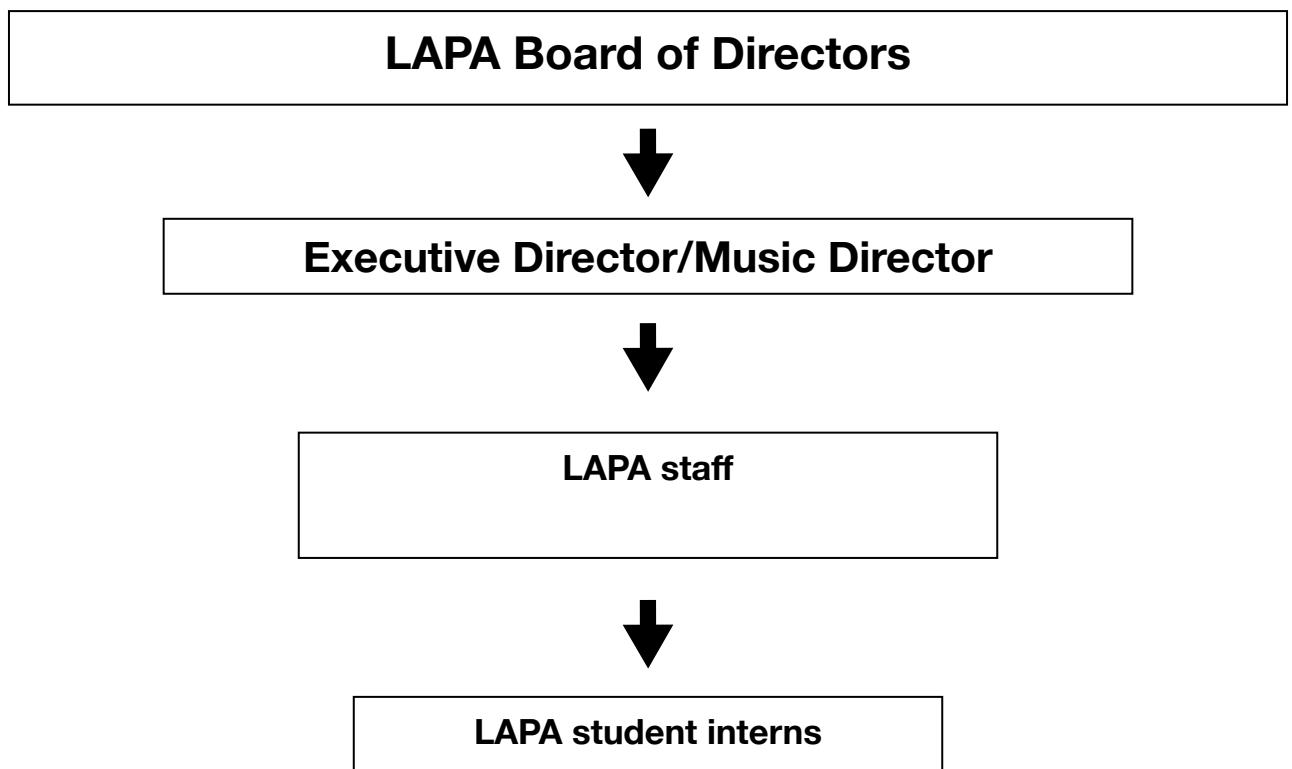
Assistant director **Mindy Bolo** has been involved in musical theater in church productions throughout her life and performs as a vocalist in venues around Lanai City. Mindy began working with LAPA in January of 2023.

Part-time costumer **Susan Book** is a certified Montessori educator and has been involved in both school and community theater productions. Susan began teaching with LAPA in the fall of 2022, and has costumed *The Claw* (2023) and *Jo and the Gigalytes* (2024).

LAPA choreographer **Kamiko Shimokawa** has been in LAPA since the fall of 2013 (as a student). She has had the opportunity to take on different roles behind the scenes. She was the acting director for LAPA's *Frozen KIDS* (2019) and the assistant choreographer for *Jungle Book KIDS* (2018). After graduating high school, Kami joined LAPA as an employee and has taught several performing arts classes for LAPA, including special effects makeup, beginning tap dance, and intro to musical theatre. She was stage manager/assistant director for *Jo and the Gigalytes* (2024), and will be lead choreographer for LAPA's upcoming production of *Flight of the Mothman*.

To help expand Lanai children's theatrical experiences, LAPA has also brought various guest artists in for workshops. Guests include professional voice teachers Diane Koshi and Sandra Beckwith, Maui Academy of Performing Arts directors David Johnson and Carolyn Wright, and actor and playwright Moses Goods. During 2020-2021, LAPA brought in special guest artists for virtual workshops on Zoom, including Nashville hit songwriters Marty Dodson and Clay Mills, as well as music producer Stefan Kelk and screenwriters Shannon Fopeano, Marco Antonio Rodriguez, and Yousif Nash. In 2024, LAPA partnered with Oahu non-profit KAPA Mag to host workshops on Lanai in acting, modeling, K-Pop dance, and singing.

2. Organization chart:



3. Compensation by Position Title:

Position Title	Est. FY26 Salary range
Executive Director/Music Director (salary)	\$45,000-\$55,000
Costumer	\$2000-\$4,000
Acting Directors (hourly)	\$3,000-\$5,000
Assistant director (hourly)	\$1,000-\$3,000
Choreographer (hourly)	\$5,000-\$7,000

**VII. Other**

1. Litigation—N/A
2. Licensure or Accreditation—N/A
3. Private Educational Institutions—N/A
4. Future Sustainability Plan

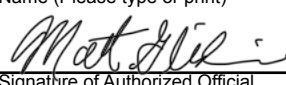
LAPA is economically self-sufficient by continuously pursuing grants from a variety of private, federal, state, county funding sources, as well as through donations. LAPA's goal is to provide a high-quality, affordable program for Lanai students, while still being able to provide competitive compensation to artistic instructors and staff. From 2020-2022, following the most successful financial year (2019), LAPA was able to survive losing its primary fundraising income (performances) by relying solely on grant funding. LAPA did not have to lay off any staff or do any pay cuts. LAPA is on track to continue growing its programming in 2025 and beyond. LAPA doesn't expect to receive funding from the same sources every year, so there is a continuous search and outreach for new grants, donations, and fundraising opportunities.



## BUDGET REQUEST BY SOURCE OF FUNDS

Period: July 1, 2025 to June 30, 2026

Applicant: Lanai Academy of Performing Arts

BUDGET CATEGORIES	Total State Funds Requested (a)	Total Federal Funds Requested (b)	Total County Funds Requested (c)	Total Private/Other Funds Requested (d)
<b>A. PERSONNEL COST</b>				
1. Salaries	20,000		5,000	29,000
2. Payroll Taxes & Assessments				19,800
3. Fringe Benefits				
<b>TOTAL PERSONNEL COST</b>	<b>20,000</b>		<b>5,000</b>	<b>48,800</b>
<b>B. OTHER CURRENT EXPENSES</b>				
1. Airfare, Inter-Island	3,000		4,000	
2. Insurance	1,000			
3. Lease/Rental of Equipment				
4. Lease/Rental of Space	1,000		1,000	
5. Staff Training				
6. Supplies				10,000
7. Telecommunication				
8. Utilities				
9				
15				
16				
17				
18				
19				
20				
<b>TOTAL OTHER CURRENT EXPENSES</b>	<b>5,000</b>		<b>5,000</b>	<b>10,000</b>
<b>C. EQUIPMENT PURCHASES</b>				
<b>D. MOTOR VEHICLE PURCHASES</b>				
<b>E. CAPITAL</b>				
<b>TOTAL (A+B+C+D+E)</b>	<b>25,000</b>		<b>10,000</b>	<b>58,800</b>
<b>SOURCES OF FUNDING</b>		Budget Prepared By:		
(a) Total State Funds Requested	25,000	<div style="display: flex; justify-content: space-between;"> <div>Matt Glickstein</div> <div>808-221-8926</div> </div>		
(b) Total Federal Funds Requested		<div style="display: flex; justify-content: space-between;"> <div>Name (Please type or print)</div> <div>Phone</div> </div>		
(c) Total County Funds Requested	10,000	<div style="display: flex; justify-content: space-between;"> <div></div> <div>1/13/25</div> </div>		
(d) Total Private/Other Funds Requested	58,800	<div style="display: flex; justify-content: space-between;"> <div>Signature of Authorized Official</div> <div>Date</div> </div>		
<b>TOTAL BUDGET</b>	<b>93,800</b>	<div style="display: flex; justify-content: space-between;"> <div>Matt Glickstein, Executive Director</div> <div></div> </div> <div style="display: flex; justify-content: space-between;"> <div>Name and Title (Please type or print)</div> <div></div> </div>		

BUDGET JUSTIFICATION - PERSONNEL SALARIES AND WAGES

Period: July 1, 2025 to June 30, 2026

Applicant: Lanai Academy of Performing Arts (LAPA)

POSITION TITLE		FULL TIME EQUIVALENT	ANNUAL SALARY A	% OF TIME ALLOCATED TO GRANT REQUEST B	TOTAL STATE FUNDS REQUESTED (A x B)
Executive Director		1	\$45,000.00	35.00%	\$ 15,750.00
Acting Director		1	\$4,000.00	50.00%	\$ 2,000.00
Choreographer		1	\$4,000.00	50.00%	\$ 2,000.00
Assistant Director		1	\$1,000.00	25.00%	\$ 250.00
					\$ -
					\$ -
					\$ -
					\$ -
					\$ -
					\$ -
					\$ -
					\$ -
TOTAL:					20,000.00
JUSTIFICATION/COMMENTS: Salaries and wages for LAPA staff					

Applicant: Lanai Academy of Performing Arts

DESCRIPTION EQUIPMENT	NO. OF ITEMS	COST PER ITEM	TOTAL COST	TOTAL BUDGETED
N/A			\$ -	
			\$ -	
			\$ -	
TOTAL:				

JUSTIFICATION/COMMENTS:

Not applicable

DESCRIPTION OF MOTOR VEHICLE	NO. OF VEHICLES	COST PER VEHICLE	TOTAL COST	TOTAL BUDGETED
N/A			\$ -	
			\$ -	
			\$ -	
TOTAL:				

JUSTIFICATION/COMMENTS:

Not applicable

Period: July 1, 2025 to June 30, 2026

Applicant: Lanai Academy of Performing Arts

FUNDING AMOUNT REQUESTED						
TOTAL PROJECT COST	ALL SOURCES OF FUNDS RECEIVED IN PRIOR YEARS		STATE FUNDS REQUESTED	OTHER SOURCES OF FUNDS REQUESTED	FUNDING REQUIRED IN SUCCEEDING YEARS	
	FY:2023-2024	FY:2024-2025	FY:2025-2026	FY:2025-2026	FY:2026-2027	FY:2027-2028
PLANS						
LAND ACQUISITION						
DESIGN						
CONSTRUCTION						
EQUIPMENT						
TOTAL:						
JUSTIFICATION/COMMENTS:	Not applicable					

**GOVERNMENT CONTRACTS, GRANTS, AND / OR GRANTS IN AID**

Ap      Lanai Academy of Performing Arts      Contracts Total:      239,160

	CONTRACT DESCRIPTION	EFFECTIVE DATES	AGENCY	GOVERNMENT ENTITY (U.S./State/ Hawaii/ Honolulu/ Kauai/ Maui County)	CONTRACT VALUE
1	Maui County OED Grant 2018	1/1/18-6/30/18	Maui County OED	Maui	10,000
2	Maui County OED Grant FY19	9/1/18-6/30/19	Maui County OED	Maui	10,000
3	Maui County OED Grant FY20	7/1/19-6/30/20	Maui County OED	Maui	10,000
4	Maui County OED Grant FY22	1/1/20-12/31/20	Maui County OED	Maui	15,000
5	Maui County OED Grant FY23	12/7/22-12/6/23	Maui County OED	Maui	15,000
6	Maui County OED Grant 2024	1/1/24-12/31/24	Maui County OED	Maui	10,000
7	Maui County OED Grant Molokai collab.	1/1/24-12/31/24	Maui County OED	Maui	10,000
8	Maui County OED Grant 2025	1/1/25-12/31/25	Maui County OED	Maui	12,500
9	Maui County OED Grant Molokai collab.	1/1/25-12/31/25	Maui County OED	Maui	10,000
10	National Endowment for the Arts	7/1/19-6/30/20	U.S. Federal Gov.	US	10,000
11	State Foundation for Culture and the Arts	7/1/19-6/30/20	SFCA	State	10,000
12	State Foundation (CARES ACT)	7/1/20-12/31/20	SFCA	State	11,660
13	State Foundation for Culture and the Arts	7/1/20-6/30/22	SFCA	State	10,000
14	State Foundation (RESCUE)	May 2022	SFCA	State	15,000
15	State Foundation for Culture and the Arts	7/1/23-6/30/24	SFCA	State	10,000
16	State Foundation for Culture and the Arts	7/1/24-6/30/25	SFCA	State	10,000
17	State Grants in Aid FY23	7/1/22-6/30/23	Grants in Aid	State	20,000
18	State Grants in Aid FY24	7/1/23-6/30/24	Grants in Aid	State	20,000
19	State Grants in Aid FY25	7/1/24-6/30/25	Grants in Aid	State	20,000

Applicant Lanai Academy of Performing Arts

## Application Submittal Checklist

*The following items are required for submittal of the grant application. Please verify and check off that the items have been included in the application packet.*

- ☒ 1) Hawaii Compliance Express Certificate (If the Applicant is an Organization)
- ☒ 2) Declaration Statement
- ☒ 3) Verify that grant shall be used for a public purpose
- ☒ 4) Background and Summary
- ☒ 5) Service Summary and Outcomes
- ☒ 6) Budget
  - a) Budget request by source of funds ([Link](#))
  - b) Personnel salaries and wages ([Link](#))
  - c) Equipment and motor vehicles ([Link](#))
  - d) Capital project details ([Link](#))
  - e) Government contracts, grants, and grants in aid ([Link](#))
- ☒ 7) Experience and Capability
- ☒ 8) Personnel: Project Organization and Staffing

Matt Glickstein

AUTHORIZED SIGNATURE

Matt Glickstein, Executive Director

PRINT NAME AND TITLE

1/13/25

DATE