

## Ken Hayashida

GOV. MSG. NO. 699

### Education

Stanford University, California, 1984, M.S. Civil Engineering  
University of Hawaii at Manoa, Honolulu, 1983, B.S. Civil Engineering

### Professional Experience

KAI Hawaii, Inc., President, 1995 to Present  
GMP Associates, Inc., Chief Structural Engineer, 1993 to 1995  
Sato and Associates Inc., Project Manager, 1988 to 1993  
Brandow and Johnston Associates, Project Engineer, 1985 to 1988  
Cygna Consulting Engineers, Structural Designer, 1984 to 1985

### Technical Papers and Presentations

- Analysis and Design of a 48-Story Condominium Building for Earthquake and Wind Forces, R. Boppana & K. Hayashida, Tall Buildings Conference, 1992.
- Improvements to Residential Construction After Hurricane Iniki, K. Hayashida & D. Hanatani, presented and published by ASCE – Hurricane of 1992 Conference.

### Awards and Recognition

2013 University of Hawaii-College of Engineering Distinguished Alumni Award  
2010 CLAD-Leadership Award- Japanese Cultural Center  
Engineer of the Year, 2007, NSPE (National Society of Professional Engineers)  
Kukulu Hale Award, 2006 - National Association of Office & Industrial Property Owners, Re-development of 31 North Pauahi Street Building

### Professional Affiliations

- ◆ American Council of Engineering Companies of Hawaii, Past President and National Director
- ◆ National Council of Examiners for Engineering and Surveying-Emeritus Member
- ◆ Structural Engineers Association of Hawaii
- ◆ American Society of Civil Engineers
- ◆ American Concrete Institute
- ◆ American Institute of Steel Construction
- ◆ American Water Works Association
- ◆ NAIOP Hawaii-Director

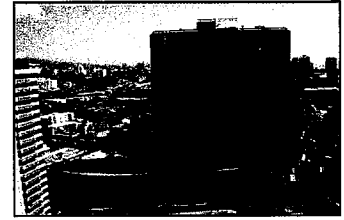
### Community Organizations

- Research Corporation of the University of Hawaii-Chair
- City & County of Honolulu-Planning Commission
- University of Hawaii Alumni Association – Past President
- University of Hawaii-College of Engineering: Dean's Council
- University of Hawaii Engineering Alumni Association-Past Director
- Lanakila Pacific Foundation – Past Chairman
- New Hope Diamondhead-Church Council (Past)
- Japanese Cultural Center-Past Chairman
- American Council of Engineering Companies- Past President & National Director
- State of Hawaii Board of Registration of EASLA-Served eight years
- State of Hawaii Earthquake Advisor Board-Past Director
- Friends of Iolani Palace – Past Director

Ken Hayashida has been an active contributor to the engineering community in Hawaii for the many years. He has been generous with his time, volunteering his talents for the betterment of organizations such as the University of Hawaii's College of Engineering, YMCA, Lanakila, Iolani Palace, various youth sports teams, and his church. Mr. Hayashida began a structural engineering firm, KAI Hawaii, Inc. in 1995, and has guided it in a dynamic and visionary manner, such that his firm has grown to thirty employees. He is a strong believer in teamwork, and every year he provides training for all of his employees in team building. Ken strongly encourages all engineers to participate in professional organizations, and he himself has served as President and National Director of ACECH, among other roles. [REDACTED]

**Special Contributions to the Profession**

- Capitol Building – Block J Development, Honolulu
- Inspirations – Honolulu Design Center, Honolulu
- DHHL Hale Kalaniana’ole – New Office Facility, Kapolei
- Kapolei Commons, Kapolei
- Pearl City Gateway, Pearl City
- Island Pacific Academy – Elementary School, Kapolei
- Island Pacific Academy – Middle and Upper School, Kapolei
- University of Hawaii at Manoa – Hawaii Hall Historic Restoration and Addition, Honolulu
- Honolulu Medical Group – Queen’s Physician’s Office Building III Expansion, Honolulu
- Yukio Okutsu Veteran’s Home (Hawaii State Veteran’s), Hilo, Hawaii
- Board of Water Supply – Nanakuli 242’ Reservoir
- Department of Transportation – Highways – Emergency Replacement of Paaau Stream Bridge, Mamalahoa Highway, Hilo, Hawaii
- Department of Transportation – Harbors – Kahului Pier 1C Extension



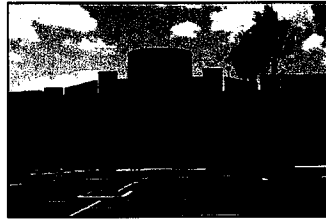
*Capitol Place*



*Hale Kalaniana’ole*



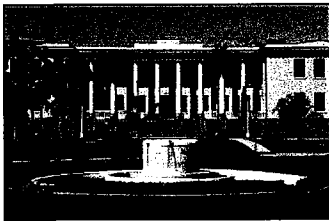
*Honolulu Design Center*



*Pearl City Gateway*



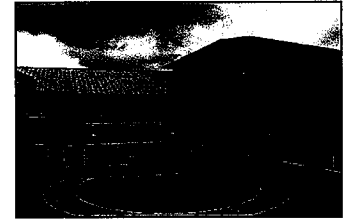
*Island Pacific Academy  
Elementary School*



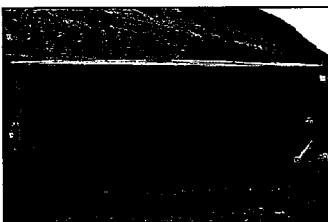
*Hawaii Hall*



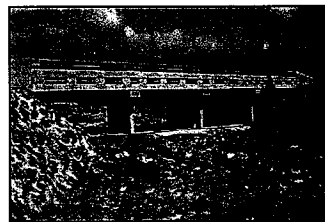
*Queen’s Physicians Office  
Building III*



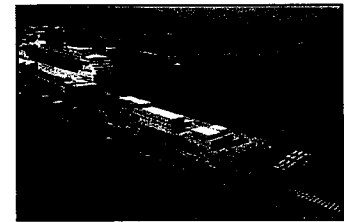
*Yukio Okutsu Veteran’s Home*



*Nanakuli Reservoir*



*Paaau Stream Bridge*



*Kahului Pier 1C*