

**THE THIRTIETH LEGISLATURE
APPLICATION FOR GRANTS
CHAPTER 42F, HAWAII REVISED STATUTES**

Type of Grant Request:

Operating Capital

Legal Name of Requesting Organization or Individual: Db:
Honolulu Biennial Foundation Hawai'i Contemporary

Amount of State Funds Requested: \$ 258,040.00

Brief Description of Request (Please attach word document to back of page if extra space is needed):
HC requests support for exhibition planning of Hawai'i Triennial 2025 including facilitation of curatorial research, artists honoraria, and Education and Public Programs Planning.

Amount of Other Funds Available:	Total amount of State Grants Received in the Past 5 Fiscal Years:
State: \$ _____	\$ <u>0</u>
Federal: \$ _____	Unrestricted Assets:
County: \$ _____	\$ <u>122,000</u>
Private/Other: \$ <u>130,000</u>	


New Service (Presently Does Not Exist): Existing Service (Presently in Operation):

Type of Business Entity:	Mailing Address:
<input checked="" type="checkbox"/> 501(C)(3) Non Profit Corporation	PO BOX 4636
<input type="checkbox"/> Other Non Profit	City: State: Zip:
<input type="checkbox"/> Other	Honolulu HI 96817

Contact Person for Matters Involving this Application

Name: Rosina Potter	Title: Executive Director
Email: rosina@hawaiicontemporary.org	Phone: 808-214-7475

Federal Tax ID#: [REDACTED]	State Tax ID#: [REDACTED]
--------------------------------	------------------------------

 _____ Authorized Signature	Rosina Potter, Executive Director _____ Name and Title	20 Jan 2023 _____ Date Signed
---	--	-------------------------------------

Application Submittal Checklist

The following items are required for submittal of the grant application. Please verify and check off that the items have been included in the application packet.

- 1) Certificate of Good Standing (If the Applicant is an Organization)
- 2) Declaration Statement
- 3) Verify that grant shall be used for a public purpose
- 4) Background and Summary
- 5) Service Summary and Outcomes
- 6) Budget
 - a) Budget request by source of funds ([Link](#))
 - b) Personnel salaries and wages ([Link](#))
 - c) Equipment and motor vehicles ([Link](#))
 - d) Capital project details ([Link](#))
 - e) Government contracts, grants, and grants in aid ([Link](#))
- 7) Experience and Capability
- 8) Personnel: Project Organization and Staffing



Rosina Potter, Executive Director

20 Jan 2023

AUTHOR ZED S GNATURE

PR NT NAME AND T TLE

DATE

Application for Grants

If any item is not applicable to the request, the applicant should enter "not applicable".

I. Certification – Please attach immediately after cover page

1. Certificate of Good Standing (If the Applicant is an Organization)

If the applicant is an organization, the applicant shall submit one (1) copy of a certificate of good standing from the Director of Commerce and Consumer Affairs that is dated no earlier than December 1, 2022.

2. Declaration Statement

The applicant shall submit a declaration statement affirming its compliance with [Section 42F-103, Hawaii Revised Statutes](#).

3. Public Purpose

The applicant shall specify whether the grant will be used for a public purpose pursuant to [Section 42F-102, Hawaii Revised Statutes](#).

II. Background and Summary

This section shall clearly and concisely summarize and highlight the contents of the request in such a way as to provide the State Legislature with a broad understanding of the request. Please include the following:

1. A brief description of the applicant's background;

Established as a 501(c)(3) nonprofit arts organization in 2015, Honolulu Biennial Foundation debuted the inaugural Honolulu Biennial in 2017 as a dedicated platform for contemporary art in Hawai'i. In 2020, the organization announced the transformation of its signature event into a triennial format and was renamed Hawai'i Contemporary (HC). Following successful biennials presented in 2017 and 2019, the organization presented the inaugural Hawai'i Triennial in 2022. These internationally recognized exhibitions each welcomed over 100,000 guests from Hawai'i, Pacific region, as well as visitors from around the world. Looking to the future, Hawai'i Contemporary continues to build upon this foundation to create inspirational and sustainable exchanges.

SIGNATURE INITIATIVES

- **Hawai'i Triennial** - a guest-curated periodic exhibition of contemporary art presented every three years at multiple locations throughout Hawai'i
- **Art Summit** - a thematic precursor to Hawai'i Triennial and multi-day series of conversations on contemporary art and ideas
- **Art in Conversation series** - an on-going series of free public programs presenting artists, curators, and thinkers from Hawai'i and around the world

- **Professional Development Program for Artists** - a series of online workshops led by established professionals in the global arts community sharing expertise in areas including networking, fundraising and development, art and law, studio management, and digital strategy
- **Hawai'i Contemporary Fellowships** - hands-on work experience in the contemporary arts and nonprofit space, with learning and research outcomes
- **Young Contemporaries** - an annual cohort of 10 public school juniors and seniors working alongside HC curators and staff to develop their own exhibition and gain professional skills in the art industry

For Hawai'i Triennial 2022 (HT22), the project goals were intended to deepen Hawai'i Contemporary's engagement within the local and Pacific arts communities and to expand the Triennial's reach through the following :

1. Exhibition of groundbreaking local, national, and international art

For 80 days in Honolulu, between February 18–May 8, 2022, HT22 was on view at the organization's exhibition partner locations: Bishop Museum, Foster Botanical Garden, Hawai'i Theatre Center, Hawai'i State Art Museum (HiSAM), Honolulu Museum of Art (HoMA), Iolani Palace, and Royal Hawaiian Center. Entitled *Pacific Century – E Ho'omau no Moananuiākea*, HT22 was the third iteration of the citywide exhibition and the largest, periodic contemporary art event in Hawai'i.

HT22 featured site-responsive art installations by 43 artists and collectives from Hawai'i, Asia-Pacific, and beyond that collectively addressed the legacies of an American twentieth century while turning toward a very different twenty-first century, one influenced by Pacific powers and cultural concerns. Their work inspired a curatorial approach that responds to the complex and nuanced intercultural exchanges observed across the archipelago of Hawai'i. HT22 was the product of the tireless dedication and curatorial vision of curatorial director Melissa Chiu (director, Hirshhorn Museum & Sculpture Garden) and associate curators Miwako Tezuka (associate director, Reversible Destiny Foundation) and Drew Kahu'āina Broderick (director, Koa Gallery, Kapi'olani Community Garden). Months of thoughtful planning, collaboration, and necessary pivoting went into developing HT22 (exhibition, free public programs, and companion catalogue publication), as well as Art Summit 2021, a series of thought-provoking conversations — all during an unprecedented global pandemic. Hawai'i Contemporary is honored to have had the opportunity to share these endeavors with our community, allowing us to engage with art in unexpected and meaningful ways and to bring together local and global voices who speak to shared contemporary social concerns.

HAWAI'I TRIENNIAL 2022 AT-A-GLANCE

7 exhibition partner venues

411 artworks in total

19 new commissions

5 participatory projects

43 artists and collectives

130 artists + performers + speakers

12 countries represented (based on ethnicity and current location)

U.S., Puerto Rico, American Samoa, Japan, China, Thailand, Singapore, Australia, Portugal, Aotearoa, Hong Kong, Philippines

Hawai'i Triennial 2025 (HT25) dates are February 15 through May 4, 2025

2. Increase accessibility to contemporary art and the triennial

“Accessibility” is defined by audience (diversity of demographics), method of engagement (in-person versus virtual, in-print versus digital, passive versus active), and content (ease of interpretation). The goal to increase accessibility to the Triennial and contemporary art at large was reflected in the following methods:

a. Presented a wide-variety of artwork media, including interactive and public art, in various physical locations both indoors and outdoors. The diversity of artwork mediums presented in HT22 was unprecedented in the organization's short history. In addition to traditional media such as painting, sculpture, photography and video, HT22 artworks included site-specific installations, participatory projects, published printed matter collections, and interactive augmented and virtual reality experiences. New, site-specific installations included *Cosmogenic Conduction* by Michael Joo, re-presenting fossil beds and sonofied objects that responded to Bishop Museum's collection; an otherworldly sculpture by Leeroy New composed of bamboo and found materials (e.g., surfboards and plastic bottles) and constructed with the help of nearly 100 volunteers; and an immersive fashion, film and sculpture experience presented by TOQA in the orchid conservatory at Foster Botanical Garden. Digital media artist Jennifer Steinkamp's notable commission projected a digital animation of flowers from Queen Lili'uokalani's garden, Uluhaimalama, on the facade of Iolani Palace, the site of the Queen's unlawful imprisonment in 1895.

Participatory projects provided unexpected encounters outside of traditional exhibition spaces with artists and viewers. *Global Free Store*—a retail-style free exchange of donated goods—produced by Double A Projects in a vacant shop space at Royal Hawaiian Center was open daily to the public February 18–28, 2022. *Moveable Feast*, demonstration planters that identify edible weeds, by EATING IN PUBLIC popped up across residential neighborhoods on O'ahu. Sydney-based artist Justine Youssef launched a mail exchange project, in which audiences register to receive a package containing a vial of scented oil that the artist distilled by hand using methods inherited from her family. *CAFE* by Tropic Editions in the cafe space at Hawai'i State Art Museum responded to covid-related closures with a social-practice experiment that reconsidered how food, art, and service are grounded in the act of publishing. *Embassy* by aboriginal artist Richard Bell established outdoor gathering spaces (using a large tent that references the 1972 Aboriginal Tent Embassy) for artists, curators, educators, organizers, community members, et al. to have safe, open, and public discussions on land rights, indigenous self-determination, and governance.

Additional non-traditional visual art mediums presented during HT22 included the display of print projects (books, journals, magazines, zines, artist books, posters, ephemera, etc.) by small-press (art) publications of Hawai'i presented alongside related films and public programs at the Hawai'i State Art Museum, as well as the immersive *Hard Core Digital Detox*, a virtual reality experience by Miao Ying at Royal Hawaiian Center and the playful augmented reality experience presented with powerful portraits of the Pacific Sisters at Bishop Museum.

b. Provide free programming and admission whenever possible

All public programs presented by Hawai'i Contemporary and our partners were free to the public whenever possible. A total of 111 public programs presented during HT22, which included in-person artist conversations (which were streamed online and/or available on-demand video), guided tours with HC staff and HT22 curators, reception events, pop-up participatory experiences and other partner programs, such as family days and public festivals coinciding with HT22. While rich, our HT22 programming was slightly restrained based on the covid-related landscape at the time.

37 public tours available on a weekly basis

7 privately arranged tours for visiting groups

12 in-person Art in Conversation programs with artists and curators

10 virtual artists and conversation programs produced with education partners (e.g. Australia Council and Pomona College)

9 reception events held at HT22 venues (free with registration)

14 pop-up participatory experiences

22 partner program (e.g. Super Saturdays at HiSAM, Family Sundays at HoMA, Member nights at Bishop Museum) with thematic content focus related to HT22

Total - 111 public programs presented during HT22

The HT22 All-Access Pass granted unlimited entry into participating HT22 venues during the run of the exhibition, from February 18–May 8, 2022. Passes were sold online at hawaiiicontemporary.org. HT22 was free with museum admission; some venues had an admission cost. The All-Access Pass offered unlimited entry, so pass holders could make repeat visits to the participating venues during the exhibition period.

or HT22, Hawai'i Contemporary introduced the Student All-Access Pass offering unlimited entry into participating HT22 venues to individuals with a valid student ID. The organization distributed 4,000 complimentary Student All-Access Passes through education networks on O'ahu. We also passed out promotional cards with a QR code to receive a free All-Access Pass. The Student All-Access Pass expanded access to the exhibition, getting the word out to a young audience.

c. Introduce a student-led exhibition and activities in West O'ahu

In the spirit of the 'ōlelo no'ēau "i ka wā ma mua, i ka wā ma hope," the student exhibition *Imagined Futures* invited students from Ulu A'e Learning Center, DreamHouse 'Ewa Beach, Kapolei High School, and UH West O'ahu to present work around the idea of looking to the past to create the future, and imagining futures that also heal the past. Specifically, the project encouraged students to imagine how the decommissioned military bunker and culturally significant site of Pu'uokapolei could be realized as a community space in the future. Organized by Hawai'i Contemporary and led by 2021–22 HC Fellow and UH West O'ahu graduate Emma Lake, the exhibition was displayed in partnership with the City and County of Honolulu at Kapolei Hale March 12–26, 2022.

In partnership with Kapolei Commons during Celebration of the Arts Month (March 2022), HC organized drop-in Art Activities on March 5, 12, 19 and 26, 12PM–2 PM. Visiting artists introduced by HC developed student activities inspired by HT22 themes related to environmental concerns and stories of place. Over four consecutive Saturdays, 70 keiki with families in West O'ahu were engaged with activities such as zine making, recycle/upcycle art projects, photography, and poetry workshops.

d. Provide guided tours and art ambassadors on site at HT22 venues

Guided tours were available at HT22 exhibition venues with varying schedules adhering to COVID-19 guidelines. All tours were free except for special ticketed events. Free weekly curator- and staff-led tours were offered at Hawai'i State Art Museum and Royal Hawaiian Center, respectively, throughout the duration of the HT22 exhibition. Docent-led tours at the Honolulu Museum of Art were available for the months of April and May only. All guests at Foster Botanical Garden and Hawai'i Theatre Gallery were greeted by an HC exhibition attendant and HT22 art ambassador, who provided a personal introduction to the artwork and Triennial at large.

Exhibition attendants trained and paid by Hawai'i Contemporary were responsible for opening and closing venues, turning on/off media, and providing regular condition checks for artworks on display. Attendants were also stationed as dedicated HT22 art ambassadors at the following venues during public open hours, enhancing visitors' experience and answering questions about the artworks:

Foster Botanical Garden
Hawai'i State Art Museum
Hawai'i Theatre Gallery
Royal Hawaiian Center
Iolani Palace (February 16–19, 2022 only)

Additional volunteers trained as art ambassadors provided supplemental support to existing institution visitor experience teams and colleagues at the following venues during public open hours:

Bishop Museum

Note: Additional HC volunteers were not stationed at the Honolulu Museum of Art at the institution's request.

3. Offer educational programming online and in-person for cultivating creative and intellectual enrichment in tandem with education and community partners

Art Summit 2021

A year before Hawai'i Triennial 2022 (HT22), Hawai'i Contemporary presented Art Summit 2021, a multi-day virtual event that brought together renowned artists, curators, and thinkers from Hawai'i and around the world for discussions on contemporary art and ideas. A thematic precursor to HT22, Art Summit 2021 expanded on the curatorial theme: Pacific Century – E Ho'omau no Moananuiākea and featured HT22 curators and selected participating artists, including a rare conversation with world-renowned artist/activist Ai Weiwei. The free event premiered online with 28 programs, February 10–13, 2021, and was available for on-demand viewing through February 28, 2021. More than 3,400 registered for the virtual event from over 67 countries, which received more than 14,060 unique views. Some 40% of viewers watched from Hawai'i, including the islands of O'ahu, Hawai'i, Kauai and Maui County.

b. Provide teaching resources and access to education materials

Following Art Summit 2021, access to videos of the conversations were available for viewing and use by educators, some incorporated select videos into their college-level curriculum. Additional HT22 artist interviews were produced during HT22 to contribute to a burgeoning video archive for ongoing education purposes and access to primary information about the artist, artwork and context in the Hawai'i Triennial.

In fall 2021, Hawai'i Contemporary provided Teaching Community Sessions at the Professional Development Center at Hanahau'oli School. The virtual sessions were open to educators of all subjects K-12 and workshop were led by HC's Director of Community Engagement, Leilehua Lanzilotti. A total of 28 participated with the following learning outcomes:

- Learn more about the global and local artists in HT22
- Learn more about how the artists integrate themes of sustainability, environmental awareness, place, and history into their work
- Try out some educational activities with the group and brainstorm ideas with other teachers on how to integrate these themes into their curricula.

During HT22, in partnership with Hawai'i Art Alliance, teachers' resources were provided online for download. Three separate engagement units were provided with suggested activities and prompts for elementary, middle school, and high school students respectively.

See <https://hawaiicontemporary.org/teachers-resources>

c. Public programs and participatory art projects

All HT22 public programs were produced in collaboration with HC exhibition, education, and community outreach partners. A collaborative approach to sharing resources for venue, audience, operations, and communications outreach is fundamental to providing high-quality educational and informational content in an accessible and practical way.

Selected HT22 artworks were presented as participatory projects—scaled events for public participation that aimed to involve audiences and different communities to directly interact with the artwork and/or artists. (See above 2a for detailed introduction of five HT22 participatory projects)

HT22 public programs included artist conversations, teaching workshops, film screenings, and interactive performances to complement the information shared about the artwork and displays. Programs targeted art audiences, general non-art audiences, families and keiki, and audiences beyond Honolulu.

4. Elevate the arts and artists of Hawai'i and the Pacific region

HT22 Catalogue - a scholarly publication

Amidst a limited body of scholarly publications dedicated to contemporary art in Hawai'i and on the occasion of HT22, HC took the opportunity to provide a platform for conversation, dialogue, and scholarship that contributes to our community's cultural heritage within Asia-Pacific through an exhibition catalogue. When we first founded Hawai'i Contemporary, organizations dedicated to the proper research and exhibition of contemporary artwork from the Pacific were virtually nonexistent and continue to be scarce. Such publications help raise the visibility of Hawai'i as a center for contemporary art on the world stage while serving our local community with access to wide-ranging art and ideas from Hawai'i, the Pacific, and beyond by providing written scholarly critique of work by Hawai'i artists, alongside their global contemporaries.

Published on the occasion of Hawai'i Triennial 2022 (HT22), *Pacific Century – E Ho'omau no Moananuiākea* examines key art historical backgrounds and contemporary discussions on art, expanding the frame of reference for the Asia-Pacific region. The 284-page hardcover catalogue features essays by HT22 co-curators providing critical approaches that shaped the framework of the Triennial around the fluid concept of a Pacific Century, while a newly commissioned conversation with Homi K. Bhabha (originating from Art Summit 2021), illuminating his theoretical criticism, carves out a new discursive space where the marginalized find agency. Participating HT22 artists are highlighted in a dedicated section with an original introductory text and images, as well as introductions for each HT22 exhibition venue provided in English and Hawaiian language. Additional historical essays reprinted with permission appear in the publication which altogether is an essential resource for critical exploration of contemporary art in Asia-Pacific.

Editors + Curators: Drew Kahu'āina Broderick, Melissa Chiu, Miwako Tezuka

Contributors: Noelani Arista, Homi K. Bhabha, Léuli Eshrāghi, Sarah Kuaiwa, Mari J. Matsuda, and Jamaica Heolimeleikalani Osorio

Additional Authors (reprinted with permission): Vishakha N. Desai, Hou Hanru, Hans Ulrich Obrist, Haunani-Kay Trask, and Albert Wendt

Distributed by: University of Hawai'i Press (North America), Hatje Cantz (International)

b. Golden Hibiscus Award

Established in 2019 by Honolulu Biennial 2017 curatorial director Fumio Nanjo, the Golden Hibiscus Award reflects the mission of Hawai'i Contemporary in recognizing the underrecognized work of artists from Hawai'i and the Pacific and their contribution to the field of contemporary art. The \$10,000 cash prize was awarded to an HT22 artist collective ('Elepaio Press) selected by an independent jury composed of arts professionals who specialize in contemporary art and culture or whose work intersects with contemporary art.

c. 'Umeke Art

Established in 2016 during our organization's first exhibition in Honolulu, *Chain of Fire*, 'Umeke Art initiative featured partners with concurrent cultural events and arts programs. For the 2021–22 period, 'Umeke Art provided an online resource to more than 35 community partners cultivating a rich creative community in Hawai'i and beyond of artists, thinkers, educators and scholars.

2. The goals and objectives related to the GIA fund request, during July 1, 2023 - June 30, 2024;

2a. Exhibition Planning. HC requests support for exhibition planning of Hawai'i Triennial 2025 (HT25)—a periodic public exhibition of contemporary art presented in partnership with key cultural institutions across the state for over 10 weeks from February 15 through May 4, 2025. Anchor site partners will include Bishop Museum, Honolulu Museum of Art, Hawai'i State Art Museum, and City and County of Honolulu at Foster Botanical Garden. For 2025, additional sites may be determined on the islands of Maui and Hawai'i, as the first neighbor-island expansion in the

organization's history. All sites may be enhanced with a selection of public space activations and public programming.

The range of visual artwork media will include painting, sculpture, photography, video and new media, as well as interactive or immersive public installations such as large-scale outdoor public projections, augmented or virtual reality, and iterative or performance-based work. During the FY24 GIA period, State funds will enable HC to:

- Facilitate the curatorial research and work of a world-class curatorial team: Wassan Al-Khudhairi, independent curator and formerly chief curator of Contemporary Art Museum St. Louis; Binna Choi, director of Casco Art Institute (Utrecht) and co-artistic director of Singapore Biennale 2022; and Noelle M.K.Y. Kahanu, independent curator and faculty at University of Hawai'i at Mānoa (Honolulu) . The curatorial process for an exhibition of the scale and quality of HT25 requires a depth of art and place-based research, artist conversations and studio visits, and exhibition site planning. The curators will first develop a curatorial précis and then curate and align both existing and newly commissioned artworks toward a central theme for HT25.
- Host HT25's curatorial team in Hawai'i for on-the-ground curatorial sessions, inclusive of travel, accommodation, per diem, and research and program expenses as incurred: three sessions planned for July 1, 2023–June 30, 2024 period.
- Develop and produce exhibition installation and production plans with site partners' spaces and resources, as appropriate to the artwork projects developed by HT25 artists.
- Complete a comprehensive art exhibition and public program plan for HT25 and recruit qualified staff to fill key roles within the organization.

2b. Support of Artists HC requests support for necessary funds to provide HT25 artists with honoraria and production funds for HT25 loan and commissioned works. Past exhibitions featured a balanced gender ratio selection of approximately 30 - 40 artists/collectives represent more than one dozen countries and over 20 cultures linked by the Pacific. As part of the production funds required to support artists, Hawai'i Contemporary will host research trips to focus on the exchange of ideas and methodologies between visiting and Hawai'i-based artists, the community, and the HT25 curatorial team. These research trips are vital in place-based research to shape thoughtful, region-appropriate projects and to provide opportunities for networking, mentorship, and an intercultural exchange of knowledge, generosity, and ideas. During the FY24 GIA period, State funds will enable HC to:

- Provide artist honoraria and a first installment of artwork production funds to all participating HT25 artists (estimated 30 - 40 artists/collective entities)
- Host three sessions of artist research trips to Honolulu, inclusive of travel, accommodation, per diem, and research and program expenses as incurred for 5 - 6 total artists during each session: three sessions planned for July 1, 2023–June 30, 2024 period.
- Provide salary support and general overhead to HC's staff, which provides all artists with curatorial, operational, and logistical planning support toward HT25.

2c. Education & Public Programs Planning: HC requests support for the planning of a comprehensive education and public program series that will serve artists, students, and the community in Hawai'i and beyond through in-person and virtual platforms. The public programs will be part of Hawai'i Contemporary's year-round offerings both in the lead-up to the Triennial

and during the exhibition itself. Funds will also support educational initiatives for students and working artists throughout the year and professional development opportunities for local artists leading up to HT25. During the FY24 GIA period, State funds will enable HC to:

- Recruit and hire an Education Program Director to facilitate development of HT25's PK-12 education program in concert with the curatorial team and to fund the development and implementation of long-lead deliverables, such as the development of pre- and post- teacher resources and the recruitment of educational partners and participating schools.
- Develop and host Art Summit 2024, scheduled for March 1–3, 2024 in Hawai'i, as a milestone educational opportunity for artists, students, and community to come together around the ideas and themes of HT25, as well as a strategically positioned event that will serve to launch the formal announcement of the curatorial themes and exhibition plans for HT25, which will take place the following year. The goal is twofold: to enhance the dimensionality of HC's midyear program offerings for both artists and community, and to generate widespread earned media coverage and calendar listings for HT25 with sufficient lead time to allow visitors to plan for travel and participation. The event will also be used to generate early promotional materials for HT25.
- Extend the Young Contemporaries program, an annual professional development program established by Hawai'i Contemporary for junior and senior high school students who will research, prepare, and display their own contemporary art. This two-month program will connect 10 talented high school students with the professional resources and expertise within Hawai'i Contemporary's network. The purpose of the program is to mentor young creatives about the business and practice of contemporary art, specifically the installation and display of art for sale to a public audience. The participants will meet on a biweekly basis, in-person or virtually, in preparation of the program.

3. The public purpose and need to be served;

Hawai'i's arts community has a priority need for organizations and programs dedicated solely to the creation, exhibition, and exploration of contemporary art. With the closure of the Contemporary Museum in 2011, there are presently zero museums in the State of Hawai'i operating exclusively for this purpose. As a result, Hawai'i's contemporary artists and exhibition collectives are forced to carve out small amounts of time, space, and resources within a huge array of programs between multi-disciplinary museums and small arts nonprofits, diluting the impact of the art due to limited reach and resources of each. As a result, the community-at-large lacks opportunities to explore properly resourced contemporary artwork from Hawai'i artists, as well as that of artists from the Pacific, Asia, and the Americas. Often, these artists share a unique connection with Hawai'i artists from the perspective of having indigenous roots that inform artistic practice and spark dialogues about such community issues as identity, homelessness, environment, social and political climate, and other topical themes. Hawai'i Contemporary (HC) seeks to address this need by presenting Hawai'i Triennial 2025 (HT25), a multi-venue exhibition and public programming that serves the community-at-large, including low-income patrons, with access to contemporary art, ideas, and programs.

It is well documented that participation in art has positive correlations to psychological, emotional, and spiritual well-being, and that as art lifts the individual, it can also lift communities. Increased social awareness and empathy, public safety, community engagement, and higher education rates have all been reported as correlating positively with communities that value, resource, and celebrate the arts (NEA, Urban, Artspace).

The National Endowment for the Arts (NEA) reports that of those surveyed, 38% of a national audience cited cost as a restrictive factor in access to art, while 37% cited access itself as the limiting factor (*When the Going Gets Tough, NEA*).

With a lack of resources in direct support of Hawai'i artists and a community need for access to contemporary artwork, ideas, and programs to improve the quality and well-being of Hawai'i residents, HC's rationale is that the Triennial programming model is a well-suited approach to address both challenges.

Hawai'i Triennial is a well-established, internationally recognized signature event for Hawai'i that serves as a vehicle to bring the cultures and communities of the Pacific together through art and educational public programming, while positioning Hawai'i on the world stage as an innovative cultural capital and Honolulu as a thriving, urban city in the Pacific, where East and West have historically met. Around the world, contemporary art biennials/triennials have transformed cities into thriving hubs for art and culture and result in measurable economic impact by attracting an influx of cultural tourists, positively impacting and diversifying the economy and creative industries. Moreover, in 2014, *The Economist* reported, "for many cities, biennials have become important sources of cultural pride, international recognition and tourism," strengthening communities and bringing people together to enjoy art.

Since its inception in 2017, Hawai'i Contemporary has helped to revitalize Honolulu as an innovative capital for arts and culture, positively impacting the city's profile and benefiting the local economy with a wide influx of arts and cultural tourists. Based on data from three iterations of the biennial/triennial presented by Hawai'i Contemporary, the key performance metrics are outlined as follows:

Economic Impact

Hawai'i Residents

Based on the AmericansfortheArts.org The Arts & Economic Prosperity IV Calculator, Hawai'i Triennial 2022 estimated **\$1.7m economic impact from Hawai'i resident attendees**. This estimate is based on average dollars spent per person by arts event attendees in similarly populated communities. These estimates are based on research findings from the 182 study regions that were part of Arts & Economic Prosperity IV, Americans for the Arts' national economic impact study of nonprofit arts and culture organizations and their audiences.

Biennials and triennials rebrand cities as innovative capitals for arts and culture, positively impacting the host city's profile and benefiting the local economy with a wide influx of arts and cultural tourists. Hawai'i Triennial 2022 had an **economic impact of \$60.82 million from out-of-town visitors**, based on the exhibition's attendance data and average dollars spent per person by out-of-state visitors to Hawai'i, as calculated by Hawai'i Tourism Authority. Moreover, prior to the COVID-19 pandemic, the combined economic impacts of Honolulu Biennial 2017 and 2019 were \$75.97 million and \$81.96 million, respectively.

Economic impact is expected to increase in the delivery of Hawai'i Triennial 2025.

Job Creation

HT22's \$4.04m in (cash and in-kind) direct expenditures contributed an estimated **133.7 full-time equivalent jobs**, while the indirect expenditures by HT22 audiences are estimated at 69.1 full time jobs.

Cultural Exchange

By exhibiting the work of Kānaka Maoli and kama'āina artists alongside their international counterparts from countries and cultures linked by the Pacific Ocean, HC's work promotes cultural exchange, understanding and, ultimately, peace. Meaningful exchanges are made not only through engagement with the artworks exhibited in Hawai'i Triennial, but also through public programming, including artist conversations, guided tours, and public activations.

Education

The Hawai'i Triennial exhibition is complemented by a robust series of public programs and educational outreach with schools and universities. In 2022, Hawai'i Contemporary presented 111 public programs directly related to Hawai'i Triennial between Feb 18–May 8, 2022, of which, 95% were completely free and open to the public. In addition to educational public programs, which included everything from artist talks to art-making keiki workshops, performances (music and dance), guided tours, panel discussions, Native Hawaiian cultural practitioner demonstrations, film screenings, poetry readings, and performance-based contemporary art, Hawai'i Contemporary also delivered 4,000 free Student All-Access Passes distributed through education networks on O'ahu.

During HT22, teachers' resources were provided online for download. Three separate engagement units were provided with suggested activities and prompts for elementary, middle school and high school students respectively.

See <https://hawaiicontemporary.org/teachers-resources>

The Art Summit in March 2024 will build on the success of its inaugural presentation in 2021. We wish to deepen this impact with HT25 by pursuing more in-person opportunities limited by pandemic-related restrictions in the last cycle. For example, our Young Contemporaries program launching this spring, will enter its second iteration during Art Summit 2024, providing a cohort of 10+ high school students unprecedented access to the artists, curators, and thinkers presenting. Working with our partners at the Honolulu Museum of Art and East West Center to produce in-person experiences and activations will further enhance the success of the second iteration of the Art Summit.

Artist and Creative Professional Development

The Hawai'i Triennial affords participating Native Hawaiian and kama'āina artists tremendous opportunity for professional development and career advancement. The exposure gained through Triennial participation has afforded other artists increased visibility and invitations for exhibition at notable art institutions across the nation. HC continuously provides professional development, networking, and advocacy for its artists in order to strengthen the community of contemporary artists in Hawai'i, the Pacific, Asia, and the Americas.

4. Describe the target population to be served; and

Hawai'i Triennial 2022 welcomed 100,603 individuals, 29% of which were out-of-state visitors. Based on growth rates, HC projects continued expansion of its audience for HT25 and estimates that it will serve 125,000 visitors, with 30% being from off-island, driving continued growth of the Triennial's economic impact.

Locally, the Triennial aims to engage Hawai'i's residents through exhibitions, public programming, and educational initiatives, including performances, music, keiki workshops, and family days with special programming. HC's core audience comes from local artists and supporting arts and culture enthusiasts. The Triennial will also attract locals and families with a general interest in quality, free or low-cost programming that provides diverse experiences not otherwise available on island.

Hawai'i Triennial 2025 will mark the fourth installment of this signature visual arts exhibition for the State, supporting the economic lifeline of our economy—the tourism industry. Attracting the highly desirable demographic of arts and culture tourists, who according to Americans for the Arts, are “both domestic and international – are ideal tourists. They spend more and stay longer.” Moreover, international cultural travelers, according to a report by the U.S. Department of Commerce, stay on average nearly three days longer than general international travelers, and, domestically, 68% of U.S. travelers in 2012 said that they included a cultural, arts, or historic event on their trip—of this group, 28% (32.5 million) extended their trip for an arts, cultural, or historic event/activity.

In addition to specifically serving arts and culture tourists domestically and internationally, by working closely with our partners at Hawai'i Tourism Authority, as well as other tourism-industry partners and our PR agency, HC also offers repeat visitors to Hawai'i a new way to experience and understand the Islands.

The support invested by our philanthropic and programmatic partners during this development year between inception and delivery is vital to ensuring a maximally successful Hawai'i Triennial 2025.

Art Summit: In 2021, A total of 3400+ registrants attended the virtual event from over 67 countries and resulted in 14,060+ unique views of the video content available online for free with registration. 40% of viewers watched from Hawai'i, including the islands of O'ahu, Hawai'i, Kauai and Maui County. While maintaining the virtual engagement of 2021, we will produce opportunities for in-person participation in Art Summit 2024.

5. Describe the geographic coverage.

HC historically has served residents from across the State of Hawai'i - first and foremost across the island of O'ahu, our most populated island and where the majority of the exhibitions and programming are held. As we saw in previous iterations by tracking zip codes via our electronic ticketing system, our visitors came from all across the island and with our robust educational outreach, we were able to bring in schools from K-12 from across O'ahu, including high school groups from neighbor islands and local college groups. By expanding exhibition sites to neighbor islands, our impact should be increased directly. HC will also serve artists, scholars, and art enthusiasts based in Hawai'i and around the Pacific, Asia, and the Americas through the vital link of shared heritage and commonalities across place and in recognition of Hawai'i's central location and cultural role within the Pacific region

III. Service Summary and Outcomes

The Service Summary shall include a detailed discussion of the applicant's approach to the request. The applicant shall clearly and concisely specify the results, outcomes, and measures of effectiveness from this request. The applicant shall:

1. Describe the scope of work, tasks and responsibilities;

HT25 is a multi-site, multi-island, and multi-partnership visual art exhibition with complementing public programming. The scope of work for HT25 in relation to this request includes:

- **Exhibition Planning will focus on developing exhibition site and program partnerships with partners** in core civic and historic spaces on O'ahu (primarily Honolulu), Maui and Hawai'i Island, engaging with our rich cultural heritage and celebrating Hawai'i's unique position within the Pacific, developed in collaboration with such institutions as Bishop Museum, Honolulu Museum of Art, Hawai'i State Art Museum, and Foster Botanical Garden.
- **Procurement of exhibition spaces on Maui and Hawai'i Island**, along with requisite planning and partnership development to ensure maximum programming of the space.
- **Research, production, and creation of artwork for artists from Hawai'i**, which will include Native Hawaiian artists to participate in HT25
- **Weekly curatorial planning sessions will be held to facilitate refinement of a curatorial theme and desired programming and community impacts and outcomes as related to the selected artists and artworks.**
- **Conduct three curatorial planning sessions** in Hawai'i during the FY24 July 1, 2023 - June 30, 2024 period
- Artists will be selected by the Curators based on the conceptual strength of their project ideas as it relates to Hawai'i's unique position within the Pacific as a midway point between Asia and the Americas. Artists are invited for research trips in Hawai'i, which are facilitated by HC staff to provide access to local resources and knowledge.
- **Once scheduled, targeted marketing and communications** for local, national, and international audiences to ensure broad coverage of **HT25's Artist Summit in March 2024** as the thematic precursor to presenting HT25 the following year.
- **The Art Summit March 1-3, 2024** is a celebration of contemporary art and a dialogue around visual culture, presenting local and global voices to the arts communities in Hawai'i. Programming will be free of charge to the public with plans to have sessions on Maui, Hawai'i Island and O'ahu.
- **Development of key messages, target schools, educational partners, teacher pre- and post- resources, and marketing for the Education program will take place beginning in June 2023. Hiring an Education Program Director** will enhance HC's ability to reach K-12 students by the creation of HT25 related curriculum and programming available for free to Hawai'i's DOE students.

2. Provide a projected annual timeline for accomplishing the results or outcomes of the service;

January 2023

- GIA Application Submitted to State Legislature

SUMMER 2023

- HT25 curatorial team and artist research trip in Hawai'i

- Hire Education Program Director
- 1 education program (virtual/hybrid in person)

FALL 2023

- HT25 curatorial team and artist research trip in Hawai'i
- Announce Art Summit line up (inc HT25 participants)
- Announce HT25 exhibition venues ***O'ahu + Maui + Hawai'i island***
- Professional Development workshop series
- 1 education program (virtual/hybrid in person)

SPRING 2024

- HT25 curatorial team and artist research trip in Hawai'i
- Launch Second Young Contemporaries Program in advance of Art Summit
- Launch Art Summit 2024 (virtual/ hybrid in person) *March 1-3, 2024 pending partners*
- Announce complete HT25 artist list

SUMMER

- 1 education program (virtual/hybrid in person)

Evaluation, Stewardship and Reporting for GIA

3. Describe its quality assurance and evaluation plans for the request. Specify how the applicant plans to monitor, evaluate, and improve their results; and

HC will evaluate the proposed components of HT25 as it does all programs--through a series of quantitative and qualitative measures. In support of the Art Summit planned March 2024, HC strives to achieve a 90% satisfaction measure with respect to the following criteria: quality of program, relevance of key messages, and overall impressions. Qualitative assessments and comments from speakers, participating artists, organizational partners, and program participants will also be collected and weighed thoughtfully during evaluation. Audience-specific surveys will be administered to program attendees and organizational partners following the program via Survey Monkey, HC's website, social media, and/or email newsletter and will also collect data on how participants learned about the symposium as well zip codes or countries of origin and

reason for attending. A video summary and HT25 teaser will be compiled following the Art Summit, posted to hawaiicontemporary.org, and disseminated to all artists, funders and organizational partners.

Just as constituent feedback and evaluation from prior iterations shaped the mix and method for HT22, it is expected that the lessons learned from this planning phase of the Triennial's fourth iteration will continue to refine HC's approach to actualizing its mission. In support of exhibition development, the Triennial will evaluate its progress in planning against the proposed timeline and in accordance with the measures specified below.

In support of the curator and artist research trips, HC will issue audience specific surveys to its participating artists and curators to assess and achieve an expected 90% satisfaction rating with the value of the program in overall: project development, the quality of hospitality--including travel, accommodation, and per diem support--as well as feedback on HC's staff and curatorial team, communication, and how supported the artists are feeling at that stage of project development.

4. List the measure(s) of effectiveness that will be reported to the State agency through which grant funds are appropriated (the expending agency). The measure(s) will provide a standard and objective way for the State to assess the program's achievement or accomplishment. Please note that if the level of appropriation differs from the amount included in this application that the measure(s) of effectiveness will need to be updated and transmitted to the expending agency.

Measures:

- 1 comprehensive HT25 exhibition plan
- 3 artist and curator trips to Hawai'i
- Education Project Director added to staff.
- All exhibition sites secured in advance of HT25
- 1 Art Summit, March 1 - 3, 2024 (virtual and in-person)
- 1,100 participants in Art Summit

Hawai'i Contemporary will monitor the following data points for all public programs conducted during this timeframe:

- Overall attendance numbers
- Geographic origins of attendees
- Attendee experience (quantitative and qualitative)
- Ages of attendees
- Existing or new to HC programming attendees

IV. Financial

Budget

1. The applicant shall submit a budget utilizing the enclosed budget forms as applicable, to detail the cost of the request.
 - a. Budget request by source of funds (Link)
 - b. Personnel salaries and wages (Link)
 - c. Equipment and motor vehicles (Link)
 - d. Capital project details (Link)
 - e. Government contracts, grants, and grants in aid (Link)
2. The applicant shall provide its anticipated quarterly funding requests for the fiscal year 2024.

Quarter 1	Quarter 2	Quarter 3	Quarter 4	Total Grant
250, \$258,040				258,040

We request the full award amount of \$258,040 in Quarter 1 of FY2024 as all deliverables are guided by the securement of funds. Hiring an Education Project Director is crucial to the success of various programs offered through the end of 2023 and in advance of the Art Summit in 2024. Art Summit is planned to begin in March 2024, and the majority of the spending required will occur in the quarters leading up to that opening. However, we are aware that the full award may not be available during the first quarter, and can adjust our fundraising calendar accordingly should the payment need to be divided. Funding should be received by December 31, 2023 to minimize interruptions to HT25 planning and cash flow, and ensure deliverables to schedule.

3. The applicant shall provide a listing of all other sources of funding that they are seeking for fiscal year 2024.

Hawai'i Contemporary solicits a wide array of philanthropic partners to ensure the success of its programs. The following list represents all non-individual prospective donors on HC's fundraising table for HT25. Individual philanthropic contributions are also sought and are represented anonymously here as Individual Donors (combined).

- AHL (formally Architects Hawaii Limited)
- aio
- Alexander & Baldwin
- American Savings Bank
- The Andy Warhol Foundation for the Visual Arts
- Anteprima
- Atherton Family Foundation
- Bank of Hawaii
- Central Pacific Bank
- City & County of Honolulu
- Contemporary Art Foundation 公益財団法人現代芸術振興財団
- Cooke Foundation
- DAWSON

Don Quijote LLC
Engaging the Senses
First Hawaiian Bank
Growney Family Fund
Hawai'i Community Foundation
Hawai'i Tourism Authority
Hawaiian Airlines
The Howard Hughes Corporation
Individual Donors
Japan Foundation
The Korea Foundation
Larson Charitable Foundation
MakeVisible
McInerney Foundation
National Endowment for the Arts
Neiman Marcus
Servco Pacific Inc.
Sidney E. Frank Foundation
State Foundation on Culture and the Arts
State of Hawai'i
Swayne Family Foundation
WLS Spencer Foundation

4. The applicant shall provide a listing of all state and federal tax credits it has been granted within the prior three years. Additionally, the applicant shall provide a listing of all state and federal tax credits they have applied for or anticipate applying for pertaining to any capital project, if applicable.

None

5. The applicant shall provide a listing of all federal, state, and county government contracts, grants, and grants in aid it has been granted within the prior three years and will be receiving for fiscal year 2024 for program funding.

FY20, FY21, FY22

National Endowment for the Arts: \$75,000

Hawai'i Tourism Authority (Community Enrichment Program): \$110,000

State Foundation on Culture and the Arts (Art Summit 2021 + Triennial 2022): \$602,513

State Foundation on Culture and the Arts (American Rescue Plan): \$15,000

City & County of Honolulu (American Rescue Plan): \$15,000

6. The applicant shall provide the balance of its unrestricted current assets as of December 31, 2022.

Please find Statement of Financial Position as of December 31, 2022 for HC in the Appendices.

V. Experience and Capability

1. Necessary Skills and Experience

The applicant shall demonstrate that it has the necessary skills, abilities, knowledge of, and experience relating to the request. State your experience and appropriateness for providing the service proposed in this application. The applicant shall also provide a listing of verifiable experience of related projects or contracts for the most recent three years that are pertinent to the request.

Having successfully delivered two biennials and one triennial, Hawai'i Contemporary is in a qualified position to carry out the deliverables in this request. Full overview of each iteration is available at www.hawaiiicontemporary.org

HC is governed by a Board of Directors comprised of 13 professionals and patrons of the arts in Hawai'i, the executive leadership of which comprises: Masako Shinn, Chairman, Maile Meyer and Piia Arma, Vice Chairs, Trever Asam, Treasurer. More than half of the board has governed over the past three iterations, with the majority having led HC through successful production and delivery of HT22. Each contributes area specific knowledge and leadership to the Triennial development process. A full list of Directors is provided in the Appendices.

HC's permanent team is composed of five positions, each of which are staffed by seasoned professionals in their fields: an Executive Director, an Associate Director, an Operations Director, a Director of Partnerships and a Development Associate. This team leads the charge on Board relations and governance, assembling the curatorial team per triennial, new business and partnership development, external affairs, fundraising, marketing, human resources, administrative oversight, strategic goal and resource management, and finance management. This team works closely with the HT25 Curatorial team, to unite and lead HC's larger exhibition team.

Key Leaders w/Qualifications are as follows:

Hawai'i Contemporary Board Chair Masako Shinn is also a board trustee of American Friends of M+ and Japan ICU Foundation, as well as a minority partner of Graphis Inc., a publisher of books and magazines on design. Prior to Graphis, she held senior positions at Drexel Burnham Lambert Inc., Salomon Brothers, Inc., and Morgan Stanley, Inc. Masako has served on the boards of the Asia Foundation, Japan Society, Freer and Sackler Galleries at Smithsonian's National Museum of Asian Art, and the President's Advisory Committee on the Arts at the Kennedy Center. She received her bachelor's degree from the International Christian University in Tokyo, Japan, a master's degree in Business Administration from Harvard Business School, a master's degree in East Asian Studies from Columbia University and a doctorate degree in the History of Design from Bard Graduate Center in New York. She joined the Hawai'i Contemporary board in 2021 and will lead the board in fiscal oversight and continued development of HC's growing role as a regional leader in the arts during the HT25 program period.

Trever Asam, Hawai'i Contemporary Board Treasurer, is a partner at Cades Schutte. He represents taxpayers in tax controversies and disputes with the IRS and the Hawai'i State Department of Taxation. He handles audits, administrative appeals, and litigation in both the federal and state courts. Trever also advises nonprofit and tax-exempt organizations on issues obtaining tax exemption and is a regular speaker on Hawai'i State taxation and the taxation of nonprofit organizations. Prior to joining Cades Schutte, Trever was in private practice at Miller & Chevalier in Washington, D.C. and clerked for Judge Susan Oki Mollway at the U.S. District Court of Hawai'i. While at Duke University School of Law, Trever was the recipient of the Douglas A. Poe Mordecai Scholarship and an editor for the *Journal of Law and Contemporary Problems*. Before beginning his legal career, Trever was a teacher in the District of Columbia Public Schools. Trever is responsible for fiscal oversight of the Hawai'i Contemporary and HT25.

Rosina Potter is Executive Director of Hawai'i Contemporary. Rosina worked for more than 15 years in art gallery management, project consulting and community development before being named art director at Four Seasons Resort Maui at Wailea in 2018. As the Resort's sole arts professional, she managed their Artists Showcase, a museum-quality permanent collection, and created related programming and activations. She served on the board of Art Maui and consulted on a range of arts and cultural projects in support of local artists. Born in North Carolina, Rosina graduated from University of Florida with a bachelor's degree in history and art history. She lived on Maui for nearly two decades, before moving to O'ahu recently.

Associate Director Josh Tengan is a Honolulu-based independent curator, writer, and a community arts organizer from Pauoa, Kona, O'ahu. He served as assistant curator of HB19 and returned to Hawai'i Contemporary as exhibition manager of HT22. From 2015–2019, he worked with local and Native Hawaiian artists at Pu'uhonua Society to deliver Hawai'i's largest annual thematic contemporary art exhibition, CONTACT.

Katherine Don, Director of Partnerships, is an independent curator and contemporary arts advocate. A longtime Board member of the Honolulu Biennial Foundation and Executive Director (2020-2022), she oversaw the transition of the organization from biennial to triennial and realized HT22.

Nicole Duarte is Project Director of Hawai'i Contemporary. As an arts administrator, writer, and layout designer, she has contributed to Hawai'i's arts community, managing art projects, organizing pop-up exhibitions, and producing communications around art. She has worked with Hawai'i-based artists, and has had a supporting role in *CONTACT*, an annual juried exhibition of contemporary art in Hawai'i. Originally from Kailua, she holds a bachelor's degree from University of Arizona in English Literature and Composition and a Graduate Diploma in the History of Art from the Courtauld Institute of Art in London.

Originally from Moanalua, Development Associate Monica Lee cultivated her nonprofit, event management, and communications skills in New York, Chicago, San Diego, and Los Angeles, most recently serving as Director of Regional Communities with UCLA Alumni Affairs. She complements her work with Hawai'i Contemporary as a volunteer at Honolulu Museum of Art and Kumu Kahua Theatre. She sits on the board of Asian Pacific American Friends of the Theater, and has served on the boards of the UCLA Asian Pacific Alumni Network, Slow Food Urban San Diego, and Project by Project. She earned her bachelor's degree in Psychology from UCLA.

2. Facilities

The applicant shall provide a description of its facilities and demonstrate its adequacy in relation to the request. If facilities are not presently available, describe plans to secure facilities.

HC partners with key institutional site partners for exhibition, the majority of which have long standing partnerships with the organization. Prospective exhibition site partners for HT25 will also serve as the prospective partners for the activities outlined in this proposal.

Honolulu Museum of Art

Honolulu Museum of Art (HOMA) is the largest art museum in Hawai'i, and boasts one of the largest single collections of Asian and Pan-Pacific art in the U.S. A partner since HB17, the relationship grew for HB19 and HT22 to include exhibition space in two main galleries, installation support, programmatic support, resources for featured artists, an exclusive exhibit preview event, and cross promotion.

Hawai'i State Art Museum

Hawai'i State Art Museum (HiSAM) first partnered with HC for HB19. HiSAM offers free admission to residents and visitors alike, and is centrally located in downtown Honolulu, making it an ideal exhibit location. HiSAM's commitment to public programs that trend with Honolulu's evening and weekend art scene fits well with HC's public programming initiatives. Outdoor exhibition space helps to make artworks highly visible to passersby. As part of HT22, HiSAM featured nine artists and art collectives, and 19 art collaborators across four spaces in the museum, along with regular tours and programs.

Bishop Museum

Bishop Museum (Bishop) is the Hawai'i State Museum for Natural and Cultural History, and since HB17, has partnered to provide exhibition space and cross promotion. More importantly, Bishop provides research access to HC artists to explore the Museum's ethnological and biological collections, as well as its library and archive, a treasure trove of primary source materials that share Hawai'i's history and culture. These materials are vital to HC's mission and the place-based nature of the Triennial.

City and County of Honolulu at Foster Botanical Garden

Foster Botanical Garden is a 14-acre heritage Garden tucked away in bustling Honolulu. This City & County site has partnered since HB17. Foster has provided grounds/landscape support for the development of large outdoor commissions, coordinated free admission days and public programs, hosted HC's volunteer appreciation luncheon, and welcomed hundreds of students on field trips to view artwork. Foster also participates in the All-Access Pass program, and is enthusiastic to continue its support.

Partner venues on Maui and Hawai'i Island are currently being vetted and agreements will be secured by Fall 2023.

VI. Personnel: Project Organization and Staffing

1. Proposed Staffing, Staff Qualifications, Supervision and Training

The applicant shall describe the proposed staffing pattern and proposed service capacity appropriate for the viability of the request. The applicant shall provide the qualifications and experience of personnel for the request and shall describe its ability to supervise, train and provide administrative direction relative to the request.

Hiring an Education Program Director is one of the most important components of this request. The new hire will report directly to the Executive Director.

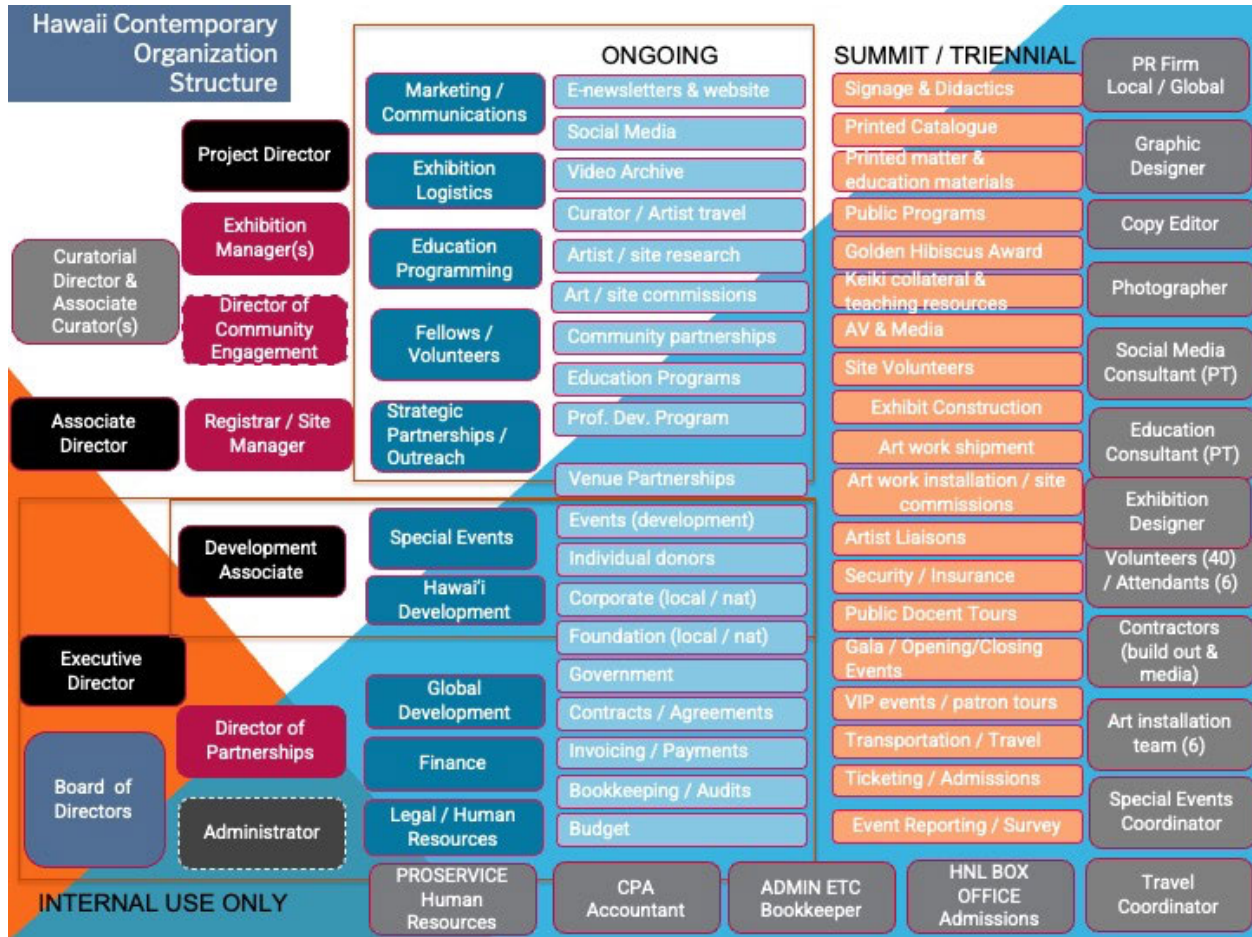
Job Description:

The Education Program Director will design and implement education programs on behalf of Hawai'i Contemporary that meets the needs of K-12 DOE requirements as well as other partner institutions. They will develop curriculum, programming and content for classes, lectures, hands-on learning experiences and other educational materials. They will ensure that all activities and requirements of the education program are met. They will require a bachelors degree or equivalent and report to the Executive Director.

2. Organization Chart

The applicant shall illustrate the position of each staff and line of responsibility/supervision. If the request is part of a large, multi-purpose organization, include an organization chart that illustrates the placement of this request.

Currently, all staff reports directly to the Executive Director. Please see below an image of our organization chart that illustrates staff expansion that will occur in advance of HT25.



3. Compensation

The applicant shall provide an annual salary range paid by the applicant to the three highest paid officers, directors, or employees of the organization by position title, not employee name.
attached pg.7

VII. Other

1.Litigation

The applicant shall disclose any pending litigation to which they are a party, including the disclosure of any outstanding judgement. If applicable, please explain.
none

2.Licensure or Accreditation

The applicant shall specify any special qualifications, including but not limited to licensure or accreditation that the applicant possesses relevant to this request.
none

3. Private Educational Institutions

The applicant shall specify whether the grant will be used to support or benefit a sectarian or non-sectarian private educational institution. Please see [Article X, Section 1, of the State Constitution](#) for the relevance of this question.

none

4. Future Sustainability Plan

The applicant shall provide a plan for sustaining after fiscal year 2023-24 the activity funded by the grant if the grant of this application is:

(a) Received by the applicant for fiscal year 2023-24, but

(b) Not received by the applicant thereafter.

Hawai'i Contemporary is in the process of developing a 10-year strategic plan to ensure that the organization continues to expand and diversify its funding sources as it grows. Currently, HC is funded by local and international corporations, foundations and private philanthropists. HC is aware that the goal of the GIA is to provide crucial funding to new organizations with the intention that these organizations will be self-sustaining. HC will continue to expand its network of private philanthropists via local and international donor groups. HC will also continue to grow its Board of Directors from its current size of 17 to 20 members, which will in turn increase the funding opportunities available to HC.

**DECLARATION STATEMENT OF
APPLICANTS FOR GRANTS PURSUANT TO
CHAPTER 42F, HAWAII REVISIED STATUTES**

The undersigned authorized representative of the applicant certifies the following:

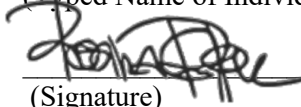
- 1) The applicant meets and will comply with all of the following standards for the award of grants pursuant to Section 42F-103, Hawaii Revised Statutes:
 - a) Is licensed or accredited, in accordance with federal, state, or county statutes, rules, or ordinances, to conduct the activities or provide the services for which a grant is awarded;
 - b) Complies with all applicable federal and state laws prohibiting discrimination against any person on the basis of race, color, national origin, religion, creed, sex, age, sexual orientation, or disability;
 - c) Agrees not to use state funds for entertainment or lobbying activities; and
 - d) Allows the state agency to which funds for the grant were appropriated for expenditure, legislative committees and their staff, and the auditor full access to their records, reports, files, and other related documents and information for purposes of monitoring, measuring the effectiveness, and ensuring the proper expenditure of the grant.
- 2) If the applicant is an organization, the applicant meets the following requirements pursuant to Section 42F-103, Hawaii Revised Statutes:
 - a) Is incorporated under the laws of the State; and
 - b) Has bylaws or policies that describe the manner in which the activities or services for which a grant is awarded shall be conducted or provided; and
- 3) If the applicant is a non-profit organization, it meets the following requirements pursuant to Section 42F-103, Hawaii Revised Statutes:
 - a) Is determined and designated to be a non-profit organization by the Internal Revenue Service; and
 - b) Has a governing board whose members have no material conflict of interest and serve without compensation.
- 4) The use of grant-in-aid funding complies with all provisions of the Constitution of the State of Hawaii (for example, pursuant to Article X, section 1, of the Constitution, the State cannot provide "... public funds ... for the support or benefit of any sectarian or nonsectarian private educational institution...").

Pursuant to Section 42F-103, Hawaii Revised Statutes, for grants used for the acquisition of land, when the organization discontinues the activities or services on the land acquired for which the grant was awarded and disposes of the land in fee simple or by lease, the organization shall negotiate with the expending agency for a lump sum or installment repayment to the State of the amount of the grant used for the acquisition of the land.

Further, the undersigned authorized representative certifies that this statement is true and correct to the best of the applicant's knowledge.

____Rosina Potter, Hawai'i Contemporary

(Typed Name of Individual or Organization)


(Signature)

20 Jan 2023

(Date)

____Rosina Potter Executive Director

(Typed Name)

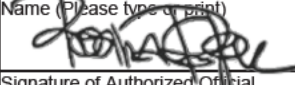
(Title)

BUDGET REQUEST BY SOURCE OF FUNDS

Period: July 1, 2023 to June 30, 2024

App

Hawai'i Contemporary

BUDGET CATEGORIES	Total State Funds Requested (a)	Total Federal Funds Requested (b)	Total County Funds Requested (c)	Total Private/Other Funds Requested (d)
A. PERSONNEL COST				
1. Salaries	75,000			387,996
2. Payroll Taxes & Assessments				
3. Fringe Benefits				
TOTAL PERSONNEL COST	75,000			387,996
B. OTHER CURRENT EXPENSES				
1. Airfare, including Inter-Island (curators and artists)				90,000
2. Insurance				10,000
3. Lease/Rental of Equipment				
4. Lease/Rental of Space				2,400
5. Staff Training				8,000
6. Supplies (family activities and other Art Su	10,000			10,000
7. Exhibition Expenses (Young Contemporar	12,000			25,000
8. Utilities				
9. Curatorial Fees	22,500			22,500
10. Curatorial Travel, Accom, Meals and Pe	9,765			15,750
11. Marketing and Communications expense	15,000			15,000
12. Artist Honoraria (Art Summit + visits thro	40,000			40,000
13. Artist Travel, Accom, Meals, and Per Die	16,275			26,250
14. Educational Material Production	12,500			12,500
15. Public Programming//Art Summit Produc	45,000			25,000
TOTAL OTHER CURRENT EXPENSES	183,040			302,400
C. EQUIPMENT PURCHASES				
D. MOTOR VEHICLE PURCHASES				
E. CAPITAL				
TOTAL (A+B+C+D+E)	258,040			690,396
SOURCES OF FUNDING		Budget Prepared By:		
(a) Total State Funds Requested	258,040	Rosina Potter 808-214-7475		
(b) Total Federal Funds Requested		Name (Please type or print) Phone		
(c) Total County Funds Requested				
(d) Total Private/Other Funds Requested	672,396	Signature of Authorized Official Date		
TOTAL BUDGET	930,436	Rosina Potter, Executive Director		
		Name and Title (Please type or print)		

BUDGET JUSTIFICATION - EQUIPMENT AND MOTOR VEHICLES

Period: July 1, 2023 to June 30, 2024

Applicant: Hawai'i Contemporary

DESCRIPTION EQUIPMENT	NO. OF ITEMS	COST PER ITEM	TOTAL COST	TOTAL BUDGETED
none			\$ -	
			\$ -	
			\$ -	
			\$ -	
			\$ -	
TOTAL:				

JUSTIFICATION/COMMENTS:

DESCRIPTION OF MOTOR VEHICLE	NO. OF VEHICLES	COST PER VEHICLE	TOTAL COST	TOTAL BUDGETED
none			\$ -	
			\$ -	
			\$ -	
			\$ -	
			\$ -	
TOTAL:				

BUDGET JUSTIFICATION - CAPITAL PROJECT DETAILS

Period: July 1, 2023 to June 30, 2024

Applicant: Hawai'i Contemporary

FUNDING AMOUNT REQUESTED						
TOTAL PROJECT COST	ALL SOURCES OF FUNDS RECEIVED IN PRIOR YEARS		STATE FUNDS REQUESTED	OTHER SOURCES OF FUNDS REQUESTED	FUNDING REQUIRED IN SUCCEEDING YEARS	
	FY: 2021-2022	FY: 2022-2023	FY:2023-2024	FY:2023-2024	FY:2024-2025	FY:2025-2026
PLANS						
LAND ACQUISITION						
DESIGN						
CONSTRUCTION						
EQUIPMENT						
TOTAL:						
JUSTIFICATION/COMMENTS:						
not applicable						

GOVERNMENT CONTRACTS, GRANTS, AND / OR GRANTS IN AID

App

Hawai'i Contemporary

Contracts Total:

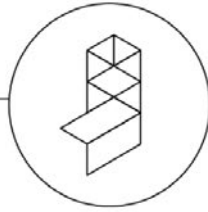
	CONTRACT DESCRIPTION	EFFECTIVE DATES	AGENCY	GOVERNMENT ENTITY (U.S./State/Hawaii/ Honolulu/ Kauai/ Maui County)
1	nothing secured for FY24			
2				
3				
4				
5				
6				
7				
8				
9				
10				
11				
12				
13				
14				
15				
16				
17				
18				
19				
20				
21				
22				
23				
24				
25				
26				
27		10		Application for Grants

Hawai'i Contemporary

Statement of Financial Position

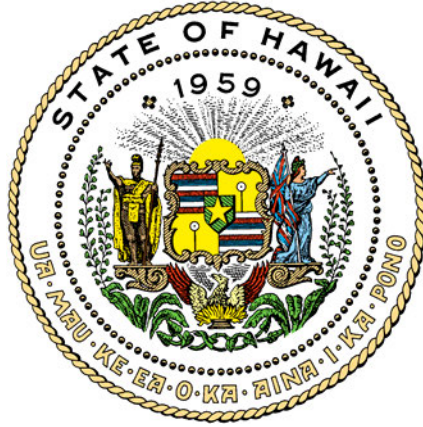
As of December 31, 2022

	TOTAL
ASSETS	
Current Assets	
Bank Accounts	\$90,226.51
Accounts Receivable	\$32,151.12
Other Current Assets	\$534.96
Total Current Assets	\$122,912.59
TOTAL ASSETS	\$122,912.59
LIABILITIES AND EQUITY	\$122,912.59



Hawai'i Contemporary
Board of Directors
(as of January 11, 2023)

Masako Shinn, Chair
Maile Meyer, Vice-Chair
Piia Aarma, Secretary
Trevor Asam, Treasurer
Kristen Chan
Diane Chen Koch-Weser
Katie Kaanapu
Jonathan Kindred
Gloria Lau
Ara Laylo
Jason Lazzerini
Anne Swayne-Keir
Taiji Terasaki



Department of Commerce and Consumer Affairs

CERTIFICATE OF GOOD STANDING

I, the undersigned Director of Commerce and Consumer Affairs of the State of Hawaii, do hereby certify that

HONOLULU BIENNIAL FOUNDATION

was incorporated under the laws of Hawaii on 08/05/2014 ; that it is an existing nonprofit corporation; and that, as far as the records of this Department reveal, has complied with all of the provisions of the Hawaii Nonprofit Corporations Act, regulating domestic nonprofit corporations.

IN WITNESS WHEREOF, I have hereunto set my hand and affixed the seal of the Department of Commerce and Consumer Affairs, at Honolulu, Hawaii.

Dated: January 16, 2023

Director of Commerce and Consumer Affairs

