

**THE THIRTIETH LEGISLATURE
APPLICATION FOR GRANTS
CHAPTER 42F, HAWAII REVISED STATUTES**

Type of Grant Request:



Operating



Capital

Legal Name of Requesting Organization or Individual: Db a:

Hawaii Farmers Union United

Amount of State Funds Requested: \$ 449,808

Brief Description of Request (Please attach word document to back of page if extra space is needed):

The project's goal is to strengthen sustainable agriculture production and food security of family farmers in Hawaii through increased production and consumption of locally grown food and strengthening the support structure for family farmers through stronger HFUU Chapters. Three inter-related objectives will: provide training to farmers to improve their skills, resources and linkages; expand use of improved soil health practices to increase production; and strengthen farmers markets and food hubs so they can provide local food to their communities. Project activities will engage in

Amount of Other Funds Available:

State: \$ 449,808

Federal: \$ _____

County: \$ _____

Private/Other: \$ 40,000

Total amount of State Grants Received in the Past 5 Fiscal Years:

\$ 0

Unrestricted Assets:

\$ 42,914

New Service (Presently Does Not Exist):

Existing Service (Presently in Operation):

Type of Business Entity:



501(C)(3) Non Profit Corporation



Other Non Profit



Other

Mailing Address:

PO Box 99

City:

Wailuku

State:

HI

Zip:

96793

Contact Person for Matters Involving this Application

Name:

Anabella Bruch

Title:

Vice President

Email:

vicepresident@hfuu.org

Phone:

301-523-5711

Federal Tax ID#:

State Tax ID#

Anabella Bruch

Authorized Signature

Anabella Bruch, Vice President

Name and Title

1/26/2023

Date Signed

Application Submittal Checklist

The following items are required for submittal of the grant application. Please verify and check off that the items have been included in the application packet.

- 1) Certificate of Good Standing (If the Applicant is an Organization)
- 2) Declaration Statement
- 3) Verify that grant shall be used for a public purpose
- 4) Background and Summary
- 5) Service Summary and Outcomes
- 6) Budget
 - a) Budget request by source of funds ([Link](#))
 - b) Personnel salaries and wages ([Link](#))
 - c) Equipment and motor vehicles ([Link](#))
 - d) Capital project details ([Link](#))
 - e) Government contracts, grants, and grants in aid ([Link](#))
- 7) Experience and Capability
- 8) Personnel: Project Organization and Staffing

Anabella Bruch

ANABELLA BRUCH, VICE PRESIDENT

JANUARY 20, 2023

AUTHORIZED SIGNATURE

PRINT NAME AND TITLE

DATE



STATE OF HAWAII
STATE PROCUREMENT OFFICE

CERTIFICATE OF VENDOR COMPLIANCE

This document presents the compliance status of the vendor identified below on the issue date with respect to certificates required from the Hawaii Department of Taxation (DOTAX), the Internal Revenue Service, the Hawaii Department of Labor and Industrial Relations (DLIR), and the Hawaii Department of Commerce and Consumer Affairs (DCCA).

Vendor Name: HAWAII FARMERS UNION UNITED

Issue Date: 01/20/2023

Status: **Compliant**

Hawaii Tax#: 27231739-01
New Hawaii Tax#: GE-1051844608-01
FEIN/SSN#: XX-XXX4372
UI#: XXXXXX7690
DCCA FILE#: 230151

Status of Compliance for this Vendor on issue date:

Form	Department(s)	Status
A-6	Hawaii Department of Taxation	Compliant
8821	Internal Revenue Service	Compliant
COGS	Hawaii Department of Commerce & Consumer Affairs	Exempt
LIR27	Hawaii Department of Labor & Industrial Relations	Compliant

Status Legend:

Status	Description
Exempt	The entity is exempt from this requirement
Compliant	The entity is compliant with this requirement or the entity is in agreement with agency and actively working towards compliance
Pending	A status determination has not yet been made
Submitted	The entity has applied for the certificate but it is awaiting approval
Not Compliant	The entity is not in compliance with the requirement and should contact the issuing agency for more information

Application for Grants

If any item is not applicable to the request, the applicant should enter "not applicable".

I. Certification – Please attach immediately after cover page

1. Certificate of Good Standing (If the Applicant is an Organization)

If the applicant is an organization, the applicant shall submit one (1) copy of a certificate of good standing from the Director of Commerce and Consumer Affairs that is dated no earlier than December 1, 2022.

2. Declaration Statement

Hawai'i Farmers Union United affirms its compliance with Section 42F-103, Hawaii Revised Statutes.

Signed; *Kennaerd Kekona*. Date 1/20/2023
HFUU President

3. Public Purpose

Hawai'i Farmers Union United affirms this project and respective funding request is for a public purpose pursuant to Section 42F-102, Hawaii Revised Statutes. These events will be multi-fold: 1) Engage in collaboration with the traditional season of Makahiki and the importance of culturally relevant practices. 2) To Celebrate farming and the successes surrounding Hawai'i's Farmers. 3) Education on Place Based crops and farming methodologies conclusive with Hawai'i's Agricultural history and traditions. 4) Create space for Farmer's to gather and learn from each other; 5) Open dialogue with farmers on regional issues directly impacting farms productivity; 6) Provide education for the broader community on Farming in Hawai'i; and 7) Public access to locally grown, sourced, and or made produce and products.

Signed; *Kennard Kekona*. DATE: 1/20/2023
HFUU/HFUF PRESIDENT

II. Background and Summary

1. A brief description of the applicant's background;

The Hawaii Farmers Union United, www.hfuu.org (HFUU), a chartered member of the National Farmers Union, www.nfu.org (est 1902), has been working to support a regenerative, locally based agricultural system since its inception in 2009. The national organization designated Hawaii as the fastest growing state NFU chapter in the country. HFUU's mission is to advocate for the sovereign rights of farmers to create and sustain

vibrant and prosperous agricultural communities for the benefit of all Hawai'i through cooperation, education and legislation. HFUU has 16 active Chapters on all the Hawaiian Islands including Molokai and Lanai. HFUU's nearly 800 dues-paying members and thousands of supporters include farmers, ranchers, value added producers, gardeners, chefs, educators, fishers and foodies who support its vision to build a regenerative agriculture system. The organization's Board of Directors offers a unique blend of talents and experience that serves to guide the organization's strategic decisions. A majority of board members are experienced and successful farmers and respected community leaders. Its state-wide network is uniquely positioned to promote agriculture production and improve food security. The HFUU network coalesces around educational and demonstration training events (both in person and virtual, the largest being its annual Convention), member volunteer expertise, a well-developed web presence and newsletters, and outreach efforts to promote regenerative agriculture. HFUU is an effective convener of initiatives across the state and has used its platform for many successful agricultural developments.

HFUU and its foundation, Hawaii Farmers Union Foundation a 501(c)3 have demonstrated their ability to mobilize resources and create the community-wide collaboration necessary for carrying out programs statewide, including farmer training workshops, demonstrating innovative methodologies, such as the Open Tatura Trellis for fruit production, and the Farm Apprentice Mentoring (FAM) program to train beginning farmers on Maui. The FAM program is part of a five-point strategic plan for the HFUU statewide with many of its facets being offered on Maui that has an economic impact not just for new apprentices but for Maui's food growers, distributors, retail and wholesale food outlets, ag-tourism and of course for building our agricultural workforce.

HFUU Chapters provide educational events to their communities on a regular basis (during COVID-19 HFUU offered educational and musical virtual events every two weeks), attracting specialists in a wide range of areas to provide farmers with updated information on ways to improve production, increase efficiency and learn about new technologies and methods. HFUU holds an annual Convention every year that offers presenters and panelists to the agricultural community with state-of-the-art technologies and innovations as well as continuing education on key areas such as soil health.

Cognizant of the importance of farmers markets and food hubs to Hawaii agricultural sector in serving both producers and consumers, HFUU/F identified the scaling and promotion of Food Hubs as one of its organizational priorities in 2019 and was a leader in the formation of the Maui Food Hub and the resulting Food Hub Hui. Promoting and supporting Farmers Markets and Food Hubs continues to be an important part of HFUU's work and priorities. Other priority areas include:

- ❖ *Education/Workforce Development.* HFUU recognizes that an understanding of sustainable agriculture principles, practical farming skills, and a business background are inseparable parts of being a successful farmer and support cohesive work for development programs in the agricultural sector.

- ❖ *Soil Health* is at the heart of sustainable food production. Farmers and farm operators need to lower the costs of farming inputs, and the key to understanding how this is done is by providing farmers with the educational tools that promote healthy soils. Healthy soils lie at the heart of creating a more vibrant and sustainable food system for Hawai'i.
- ❖ *Truth in Origin Labeling*. The word "Hawai'i" on a label provides a competitive market edge regardless of where the crops are grown. Our agricultural integrity, our producers' livelihoods, and consumers are protected when labeling is protected, especially in the case of the coffee and macadamia nut industries in Hawaii.
- ❖ *Primary Food Producers Tax Credits*. Hawaii is one of the only states that does not support its agricultural sector and farmers by providing tax credits to primary food producers. We see this as integral to promoting the industry and to make it viable for farmers to succeed in the Hawai'i landscape.
- ❖ *Inter-Island Produce Shipping Tax Credit*. It has been identified by both the Hawaii Department of Agriculture and the USDA that the cost of inter-island transportation is a bottleneck for market access for food producers in Hawaii.
- ❖ *Hemp production and the processing of value added products*. n. Exemptions for on-farm small batch processing of hemp products. Hemp product origin labeling. Grain/Fiber/Fuel exemptions to align with federal rules and regulations (Once Passed and implemented)

2. The goals and objectives related to the request

Goal. The overarching goal of this project is to *strengthen sustainable agriculture production and food security of family farmers in Hawaii by increasing production and consumption of locally grown food and strengthening the support structure for family farmers through stronger HFUU Chapters.*

Objectives. Project objectives include:

Objective 1. *Increase food production* by providing family farmers with improved skills, resources and linkages. This will be done through a combination of training and educational workshops offered by the HFUU Chapters through competitive small grants, the HFUU Annual Convention to be held on Hawaii island, Makahiki celebrations, and mini-grants offered to farmers to attain vital small farm equipment, fencing and supplies that will enable them to put new skills into practice. HFUU will also provide coaching and mentoring to these farmers. The Convention and Makahiki celebrations will also serve to open dialogue with farmers on regional issues directly impacting farm productivity.

Objective 2. *Expand use of practices that improve soil health* to increase production and sustainability. HFUU has promoted soil health as a strategic priority for many years and continues to support overall awareness and understanding on the importance of building healthy soils for sustainable food production in Hawaii and adoption of improved soil health practices. HFUU's Convention will highlight soil health and HFUU

Chapters will provide training and outreach events throughout the year on this topic. These will also be supported by small Chapter grants.

Objective 3. *Strengthen Farmers Markets and Food Hubs* ability to provide local food to communities and serve as a market for local produce. Expanding access to local food continues to be a strategic priority for HFUU. This project will support the Hana Farmers Market which has become the heart of this small, remote community. Hana is a predominantly Native Hawaiian and part-Hawaiian community (as of 2020, "Native Hawaiians & Pacific Islanders" composed 60.4% of the population). There is a high level of nutrition assistance need for populations at risk, including kupuna, keiki, mothers and low-income families (Hana High and Elementary School has a 99.5% Free and Reduced Price enrolled, compared with 57.6% statewide average, according to the Hawaii DOE Hawaii Child Nutrition Programs October 2022 data report). The market provides important local food security and economic activity through directly connecting growers/producers with consumers. The market operates several nutrition incentive programs, designed to increase access and affordability for at-risk populations as well as increase the market income for producers, including: SNAP-EBT processing for vendors, with Da Bux 50% discount through Hawaii Foodbasket, WIC-EBT processing for vendors, Senior Farmers Market Nutrition Program coupons (SFMNP), 'Ai Hua program coupons for Hawaiian families, Maui United Way's Kaukau-4-Keiki program providing food box distribution to students during school breaks, among others. The combined value of nutrition incentive programs was over \$130,000 in 2022. This project will support the HFUU Hana Chapter costs of running and coordinating this market. In addition, the project will assist two Food Hubs to identify five new farmers to enroll in their systems and facilitate their participation by helping identify and develop their products so they can successfully grow their business.

Objective 4. - Increase the awareness and use of Native Hawaiian cultural agricultural practices. HFUU will hold events and demonstrations of Hawaiian agricultural practices and cultural traditions and reach out to Hawaiian communities to increase the participation of native Hawaiian families and understanding of the importance of culturally relevant practices. These will result in increased understanding of Place Base crops and methodologies conclusive with Hawai'i's Agricultural history and traditions. HFUU will integrate Makahiki into its programming and hold three related events throughout the state. HFUU Chapter grants will also be used to promote the propagation and cultivation of canoe crops and their use.

3. The public purpose and need to be served

As Hawaii continues to struggle with the aftermath of the Covid 19 pandemic, farmers in Hawaii are experiencing unprecedented challenges. The disruptions caused by the pandemic were felt across the state and farmers struggled to adjust to the new landscape. Today we are seeing unprecedented inflation, price increases in key input sectors, and disruptions in the supply chain that are affecting farmers viabilities as food producers. HFUU has been a leader in supporting family farmers since 2009 and has taken a strong stance to support food system development and to uplift farmers. Covid

19 highlighted the importance of food security for the state of Hawaii and also the many gaps that are in the system. As Hawaii moves towards being self-sufficient and to increase local food production, there is the need for significant investment in the agricultural sector.

The goal of increasing production and consumption of locally grown food and strengthening the support structure for family farmers through stronger HFUU Chapters is especially relevant at this time. The approach of this grant is to not only help support farmers by directly funneling funding to them but to increase public awareness and support for family farmers through educational outreach events and strengthening the supporting network that provides them. These include a series of conventions to be held on multiple islands coinciding with Makahiki tying in the importance of the cultural values of Native Hawaiian agriculture and practices. These events will : 1) celebrate farming and the successes surrounding Hawai'i's Farmers; 2) encourage Place Base crops and methodologies conclusive with Hawai'i's Agricultural history and traditions; 3) create a space for farmers to gather and learn from each other; and 4) engage in the traditional season of Makahiki and the importance of culturally relevant practices. 5) provide education for the broader community on farming in Hawaii; 6) Open dialogue with farmers on regional issues directly impacting farm productivity.

4. Target population to be served

HFUU will provide direct funding to farmers to increase their production and viability, funding for HFUU Chapters to provide educational workshops and training for membership and farmers, three Makahiki celebrations partnering with the island chapters to connect the farming communities to cultural practices and traditions, and an annual convention held on Hawaii Island. The Annual Convention is a three-day event providing state-of-the art technologies, educational and demonstration workshops, outreach, community engagement and a gathering place for farmers to come together and celebrate their successes.

5. Geographic coverage

HFUU has 16 chapters and members across the islands of Oahu, Maui, Kauai, Hawaii, Molokai, and Lanai. The funds would be used to help provide support across these islands uplifting farmers, ranchers, and fishers. HFUU understands the importance of regional diversity and the differences when it comes to supporting agriculture across the various micro climates of Hawaii.

III. Service Summary and Outcomes

1. Describe the scope of work, tasks and responsibilities

The scope of work of the project centers on strengthening the agricultural community and increasing food safety and production in Hawaii through the supportive network provided by HFUU. Project events will celebrate farming and the successes surrounding

Hawai'i's Farmers and also engage with the traditional season of Makahiki and the importance of culturally relevant practices. These will open the dialogue with farmers on regional issues directly impacting farms productivity. A wide range of training events will provide education on place-based crops and farming methodologies relevant to Hawai'i's agricultural history and traditions, other regenerative agriculture techniques and practices, and will create a space for farmers' to gather and learn from each other. The project will also provide education for the broader community and increase the access to locally grown, sourced, and or made produce and products.

Project components include:

- Annual Convention on Hawaii Island;
- Three celebrations encompassing the meaning of Makahiki;
- Outreach and communication - newsletters and updated website increasing access to educational videos and resources;
- Quarterly speaker series on key agricultural topics;
- Small competitive grants to farmers to improve food production (i.e. small farm equipment, fencing)
- HFUU Chapter competitive grants - Chapters will apply to carry out tailored events for their region (i.e. Regenerative Ag Fest on Molokai with entertainment, educational booths and farm to table demonstrations; Soil health initiative that provides farmers on-site assessment, soil tests and guidance/consultation with agronomists).
- Hana Market and Food Hub support to strengthen access to local food for food insecure populations and access to markets for local producers.
- Educational training and workshops on agricultural topics provided by HFUU Chapters.

2. Projected annual timeline for accomplishing the results

The chart below provides the annual timeline for the key project activities:

Events and Activities	July	Aug	Sept	Oct	Nov	Dec	Jan	Feb	Mar	April	May	June
Makahiki celebrations on Oahu & Maui			Oahu	Maui								
Launch Competitive HFUU Chapter small grants												
HFUU Chapter Grants Implemented												
HFUU Chapter Educational Events												
Website & Newsletters - Outreach launch of quarterly speaker series												
Quarterly Speaker Series												

Hana Market and Food Hub Support																				
Convention						HI														
Launch of Competitive Farmer Grants																				
Implementation of Farmer Grants																				
HFUU Leadership training & strategic planning																				
Closing Makahiki Celebration																				

Project Results include:

1. Three Makahiki Celebrations held on Oahu (September), Maui (October) and Molokai (January). The last one will close the Makahiki season and will be held in coordination with community leaders and supported by the HFUU Molokai Chapter.
2. Twenty small grants to family farmers of \$5,000 each will be selected and awarded by HFUU through a competitive process by September 30th. The competition will be launched in July and conclude in September. An application form with evaluation criteria will be available to all family farmers and a selection committee will make selection.
3. Ten competitive small grants to HFUU Chapters of \$5,000 each will be awarded by Oct 15, 2023. The competition will be launched in August. Chapters will receive guidance and support from the Project Coordinator to identify and prepare applications that support project objectives. These events will respond to the special needs of their region and could include a Regenerative Ag Fest on Molokai with entertainment, educational booths and farm to table demonstrations or a soil health initiative that provides farmers on-site assessment, soil tests and guidance/consultation with agronomists.
4. HFUU Chapters will offer 50 educational and demonstration events during the year. These will prioritize soil health, food production, and regenerative agricultural techniques to improve and expand production.
5. Updated HFUU Website provides updated resources to the farming community on regenerative agriculture.
6. HFUU will offer four on-line quarterly Speaker Series by renowned experts in fields that support project objectives. These will be recorded and added to the HFUU library that is accessible to all users.
7. An HFUU Annual Convention will be held on Hawaii Island that will support the objectives of this project.
8. The HFUU Leadership Training, strategic planning and project evaluation will be held in March with HFUU Board members to assess the effectiveness of the grant, identify emerging successful projects, identify sustainability strategies for continuation and increasing impact.

3. Quality assurance and evaluation plans for the request. Specify how the applicant plans to monitor, evaluate, and improve their results.

- HFUU will carry out an Evaluation survey on the key events, Annual Convention and Makahiki Celebrations. Information on the number of speakers and types of speakers and attendance will be collected and provided;
- Lessons learned Report: Participating farmers, food hub operators, HFUU Chapters will be interviewed to understand the challenges and successes encountered in the implementation of the Chapter small competitive grants, farmer grants and Food Hub activities. Findings will be presented to HFUU Board members and all stakeholders;
- A report on farmer grants will be updated quarterly. Results on farmer grants will be aggregated by types of farms, produce types, improvements attained as a result of grant support. Recommendations for the future offered by farmers will also be aggregated as part of the report;
- The Project Coordinator will be responsible for quality assurance and evaluation plans. The Project Coordinator will have experience as a farmer, food hub manager, HFUU Chapter leadership and ability to monitor, analyze, evaluate, and improve programs; and
- Monthly monitoring reports will be provided to the HFUU Board by the Project Coordinator to track completion of activities, identify challenges and opportunities.

4. Measure(s) of effectiveness that will be reported to the State agency through which grant funds are appropriated (the expending agency). The measure(s) will provide a standard and objective way for the State to assess the program's achievement or accomplishment. Please note that if the level of appropriation differs from the amount included in this application that the measure(s) of effectiveness will need to be updated and transmitted to the expending agency.

- Convention and Makahiki events attract increased participation of native Hawaiian community with extensive community support;
- 50 HFUU education events provide training on to improve food security and production;
- 20 HFUU small grants to farmers strengthen food production each with an indicator of success;
- Farm markets and Food hubs provide on-going access to local food and market access to local products.
- HFUU Network with stronger capacity to provide direct support to farmers and evaluate their performance.

IV. Financial

Budget

1. The applicant shall submit a budget utilizing the enclosed budget forms as applicable, to detail the cost of the request.
 - a. Budget request by source of funds

BUDGET REQUEST BY SOURCE OF FUNDS

Period: July 1, 2023 to June 30, 2024

Applicant: _____

Hawaii Farmers
Union United

BUDGET CATEGORIES	Total State Funds Requested (a)	Total Federal Funds Requested (b)	Total County Funds Requested (c)	Total Private/Other Funds Requested (d)
A. PERSONNEL COST				
1. Salaries	50,200			
2. Payroll Taxes & Assessments	4,769			
3. Fringe Benefits	10,040			
TOTAL PERSONNEL COST	65,008			
B. OTHER CURRENT EXPENSES				
1. Airfare, Inter-Island	15,000			
2. Insurance	1,800			
3. Lease/Rental of Equipment				
4. Lease/Rental of Space				
5. Staff Training (strategic planning)	18,000			
6. Supplies	5,000			
7. Telecommunication (web, zoom and mail chimp costs)	25,000			
8. Utilities				
9. Competitive Workshops provided by Chapters (eating from the a'ina)	50,000			5,000
10. Competitive Soil Health grants for farmers (eating from the a'ina)	100,000			
11. Education and Community Engagement (Convention, Makahiki, QT. Speaker Series)	100,000			25,000
12. Hana Market and Food Hub support	70,000			10,000
13				
14				
15				
16				
17				
18				
19				
20				

	TOTAL OTHER CURRENT EXPENSES			40,000
C.	EQUIPMENT PURCHASES	384,800		
D.	MOTOR VEHICLE PURCHASES			
E.	CAPITAL			
TOTAL (A+B+C+D+E)		449,808		40,000
SOURCES OF FUNDING				
	(a) Total State Funds Requested	449,808	Anabella Bruch	301-523-5711 Phone
	(b) Total Federal Funds Requested		Name (Please type or print)	
	(c) Total County Funds Requested			
	(d) Total Private/Other Funds Requested	40,000	Signature of Authorized Official Anabella Bruch Vice President	Date January 20, 2023 <i>Anabella Bruch</i>
TOTAL BUDGET		489,808	Name and Title (Please type or print)	

b. Personnel salaries and wages (Link)

Applicant: Hawaii Farmers Union
 United _____

POSITION TITLE	FULL TIME EQUIVALENT	ANNUAL SALARY A	% OF TIME ALLOCATED TO GRANT REQUEST B	TOTAL STATE FUNDS REQUESTED (A x B)
President	.3	\$32,800.00	30.00%	\$ 9,840.00
Membership and Communications Director	.3	\$44,532.00	30.00%	\$ 13,359.60
Project Coordinator	.6	\$45,000.00	60.00%	\$ 27,000.00
				\$ -
				\$ -
				\$ -
				\$ -
				\$ -
TOTAL:				50,199.60
JUSTIFICATION/COMMENTS: Project coordinator will work in coordination with the President to assure quality implementation of the project.				

c. Equipment and motor vehicles (Link)
Not Applicable

Applicant:

DESCRIPTION EQUIPMENT	NO. OF ITEMS	COST PER ITEM	TOTAL COST	TOTAL BUDGETED
			\$ -	
			\$ -	
			\$ -	
			\$ -	
			\$ -	
TOTAL:				0

JUSTIFICATION/COMMENTS:

DESCRIPTION OF MOTOR VEHICLE	NO. OF VEHICLES	COST PER VEHICLE	TOTAL COST	TOTAL BUDGETED
			\$ -	
			\$ -	
			\$ -	
			\$ -	
			\$ -	
TOTAL:				0

JUSTIFICATION/COMMENTS:

d. Capital project details (Link)
Not applicable

e. Government contracts, grants, and grants in aid (Link)
County of Maui grant for Outreach and Farm Apprentice Mentoring Program Total
\$328,116.00

2. The applicant shall provide its anticipated quarterly funding requests for the fiscal year 2024.

Quarter 1	Quarter 2	Quarter 3	Quarter 4	Total Grant
250,000	100,000	50,000	49,808	449,808

3. The applicant shall provide a listing of all other sources of funding that they are seeking for fiscal year 2024.

USDA
OHA
DHLL
HDOA
Hawaii Community Foundation

4. The applicant shall provide a listing of all state and federal tax credits it has been granted within the prior three years. Additionally, the applicant shall provide a listing of all state and federal tax credits they have applied for or anticipate applying for pertaining to any capital project, if applicable.

None

5. The applicant shall provide a listing of all federal, state, and county government contracts, grants, and grants in aid it has been granted within the prior three years and will be receiving for fiscal year 2024 for program funding.

County of Maui – Farm Apprentice Mentoring Program FY 2023 \$328,116.00
County of Maui – Farm Apprentice Mentoring Program FY 2022 \$375,000
County of Maui – Farm Apprentice Mentoring Program FY 2021 \$375,000

6. The applicant shall provide the balance of its unrestricted current assets as of December 31, 2022.

\$42,914.36

V. Experience and Capability

1. Necessary Skills and Experience

The applicant shall demonstrate that it has the necessary skills, abilities, knowledge of, and experience relating to the request. State your experience and appropriateness for providing the service proposed in this application. The applicant shall also provide a listing of verifiable experience of related projects or contracts for the most recent three years that are pertinent to the request.

Since its inception in Hawaii in 2009, HFUU and has advocated for the sovereign right of farmers to create and sustain vibrant and prosperous agricultural communities for the benefit of all Hawai'i through cooperation, education, and legislation. HFUU represents the organization in the Hawaii legislature through the introduction of bills that support bio-diverse family farms and with our Hawaii Chapters relationship with the National Farmers Union United (est. 1903), in supporting small farmer legislation in the U.S.Congress. HFUU's leadership participate in NFU activities. HFUU also receives funding and technical assistance from NFU.

HFUU has demonstrated its ability to mobilize resources and create the community-wide collaboration necessary for carrying out programs statewide. It is respected for the wide variety of farmer training programs. HFUU has over 773 members and is led by a highly qualified Board of Directors. Through its HFU Foundation, it manages programs at the county and state level. HFUF has, as part of its leadership, a professional program manager with over 25 years experience in managing international, national and local programs.

HFUU/F has managed funds from HDOA, Hawaii Community Foundation, has received a GIA in 2017, and successfully executed many programs for private foundations. Through HFUF, the organization has managed a grant from Kamehameha Schools over four years with similar objectives, with an average of \$200k per year.

2.Facilities

HFUU has access to farms and sites throughout the state through its 16 Chapters.

VI. Personnel: Project Organization and Staffing

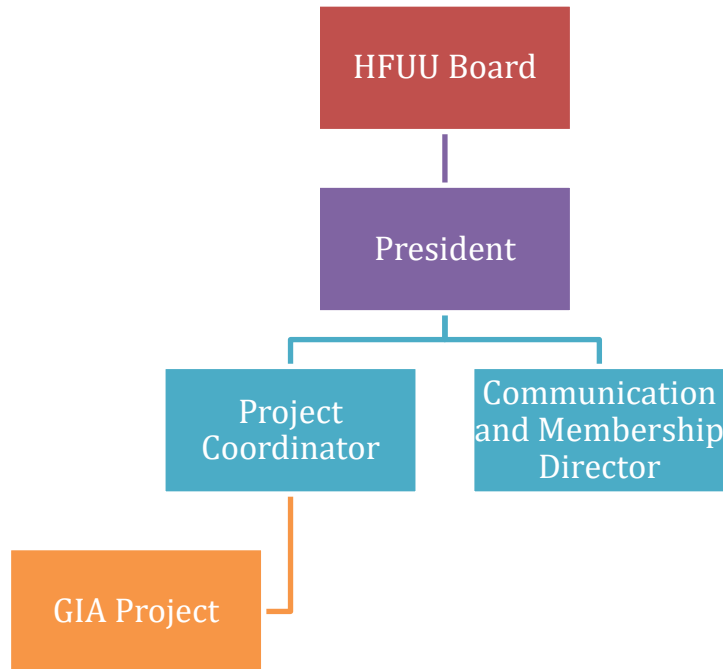
1.Proposed Staffing, Staff Qualifications, Supervision and Training

Staffing is based on 30% support from HFUU's President and Membership/Communications Director and a Project Coordinator. In addition, the project will receive the support from each of the Presidents' from the 16 Chapters and

their own Boards of Directors to execute the program. This team has extensive qualifications, with a majority of experienced farmers.

2. Organization Chart

The applicant shall illustrate the position of each staff and line of responsibility/supervision. If the request is part of a large, multi-purpose organization, include an organization chart that illustrates the placement of this request.



3. Compensation

President - \$32,800 – part time

Treasurer - \$24,000 – part time

Membership and Communications - \$44,532 – part time

VII. Other

1.Litigation

The applicant shall disclose any pending litigation to which they are a party, including the disclosure of any outstanding judgement. If applicable, please explain.

None

2.Licensure or Accreditation

The applicant shall specify any special qualifications, including but not limited to licensure or accreditation that the applicant possesses relevant to this request.

None

3. Private Educational Institutions

The applicant shall specify whether the grant will be used to support or benefit a sectarian or non-sectarian private educational institution. Please see [Article X, Section 1, of the State Constitution](#) for the relevance of this question.

None

4. Future Sustainability Plan

The applicant shall provide a plan for sustaining after fiscal year 2023-24 the activity funded by the grant if the grant of this application is:

- (a) Received by the applicant for fiscal year 2023-24, but
- (b) Not received by the applicant thereafter.

The plan is to continually strengthen the network and its capacity to diversify funding sources. As the organization demonstrates capacity, it is increasing its ability to obtain funding. Its Board is committed to its growth, and the plan is to continuing increasing leadership capacity to maintain activities in the future.