



Joy A. San Buenaventura

State Representative

District 4, Puna

07.13.2018 Weekly Lava Update

***LAVA HAS INUNDATED WARM PONDS AND KUA O KA LA ***



Ahalanui Warm Ponds, Kua O Ka La School Taken By Lava (BIVN)

<http://www.bigislandvideonews.com/2018/07/12/ahalanui-warm-ponds-kua-o-ka-la-school-taken-by-lava/>

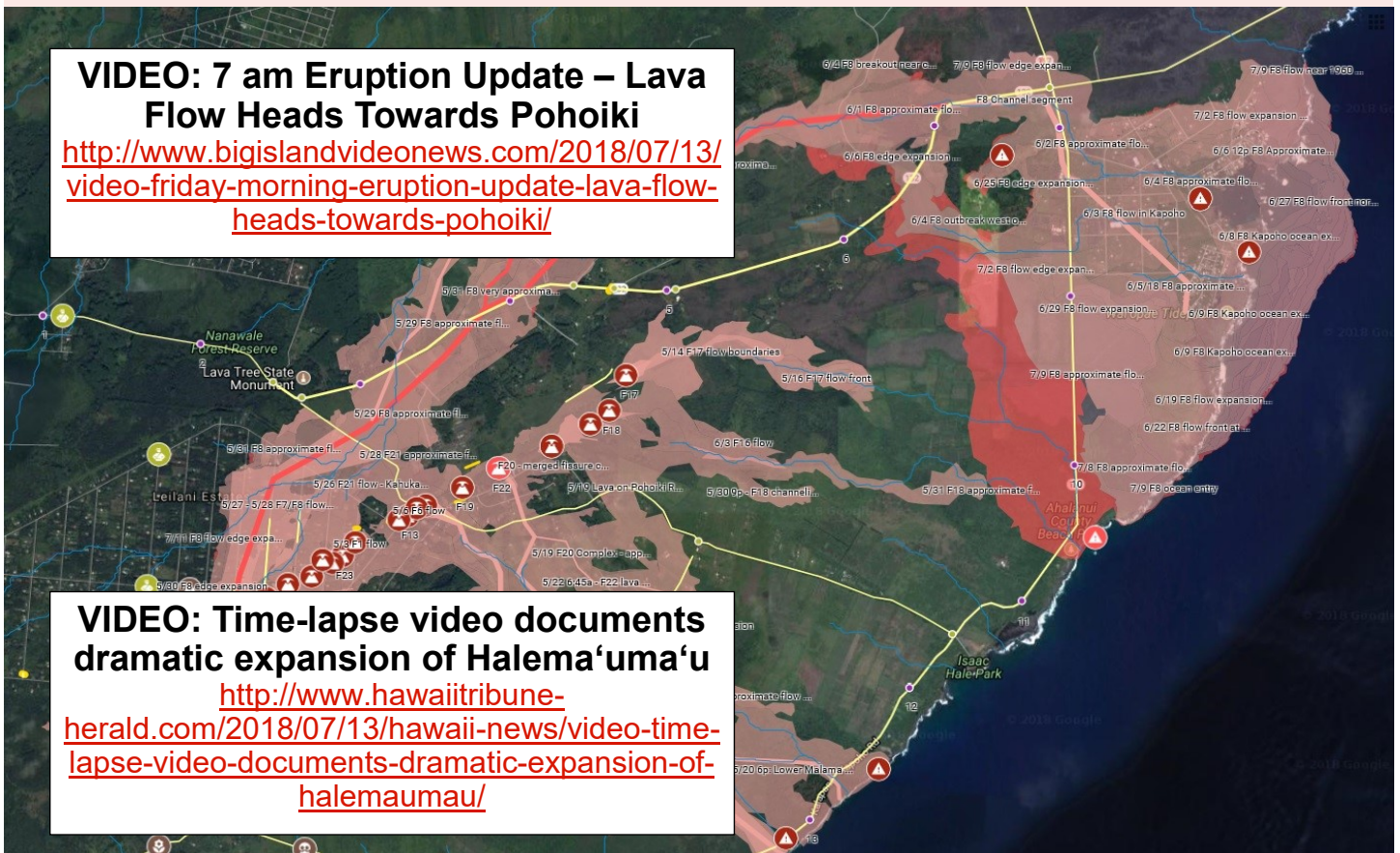
Loss of school stings: Destruction of Kua O Ka La ‘utterly devastating’

<http://www.hawaiitribune-herald.com/2018/07/13/hawaii-news/loss-of-school-stings-destruction-of-kua-o-ka-la-utterly-devastating/>



VIDEO: 7 am Eruption Update – Lava Flow Heads Towards Pohoiki

<http://www.bigislandvideonews.com/2018/07/13/video-friday-morning-eruption-update-lava-flow-heads-towards-pohoiki/>



VIDEO: Time-lapse video documents dramatic expansion of Halema‘uma‘u

<http://www.hawaiitribune-herald.com/2018/07/13/hawaii-news/video-time-lapse-video-documents-dramatic-expansion-of-halemaumau/>

Please click links for latest maps: [USGS Maps](#) & [2018 Hawaii Island Eruptions](#)

07.12.2018 FEMA News Release

FEMA is urging residents to be aware of potential earthquake damage to their homes. Damage might not be immediately visible so residents who are concerned that there may be damage are encouraged to register with FEMA



FEMA

DR-4366-HI NR 010

July 12, 2018

HI-EMA-PIO: 808-733-4300

NEWS DESK: 808-851-7928

Disaster Officials Caution Quake Damage Not Immediately Evident

Registering for Aid with FEMA May Cover Repairs

HONOLULU—Residents of Hawai'i County who have felt the ground rumble beneath their homes as a result of the ongoing Kilauea eruptions and earthquakes are encouraged to look carefully for damage.

Signs of earthquake damage are not immediately evident and can be cumulative. Even small quakes can cause damage. Residents should check their property periodically and document any damage. Look for:

- damages to foundations, piers and pillars
- cracks in walls;
- doors that don't close easily; and
- unexplained debris near wall and floor joints.

Residents with losses from the Kilauea eruptions and earthquakes that began May 3 are encouraged to register for disaster assistance from FEMA. They may do so:

- at the Disaster Recovery Center in the Kea'au High School Gymnasium, 16-725 Kea'au-Pahoa Rd., Kea'au.
- online at DisasterAssistance.gov
- by phone at 800-621-3362 or (TTY) 800-462-7585.

Applicants who use 711 or Video Relay service may call 800-621-3362. The toll-free numbers are open 7 a.m. to 10 p.m. seven days a week.

Until further notice, the DRC is open weekdays from 8 a.m. to 6 p.m. and on weekends from 8 a.m. to 4 p.m.

Residents who have already registered with FEMA and have had a home inspection to verify damage are also encouraged to look for new damage resulting from the ongoing earthquakes. If additional damage is found, residents may appeal FEMA's decision on eligibility and/or assistance amount and request their property to be inspected again.



FEMA

Advice on Building Back Stronger Available at Recovery Center

HONOLULU—FEMA recovery experts at the Kea’au Disaster Recovery Center are offering residents advice on building back stronger from disaster damage and tips on retrofitting to protect against earthquake damage.

With a focus on the recent earthquake activity, a “continuous load path” model is on display at the desk of FEMA’s mitigation specialists in the Kea’au DRC, located at Kea’au High School Gymnasium, 16-725 Kea’au-Pahoa Rd.

For more information about how to protect your property or business from disaster and get the specifics on how to:

- [Protect Your Business from All Natural Hazards](#)
- [Protect Your Property from an Earthquake](#)
- [Protect Your Property from Fire](#)
- [Protect Your Property from Flooding](#)
- [Protect Your Property from High Winds](#)

Businesses and Nonprofit Organizations Find Low-Interest Disaster Loans to Be Smart Business

HONOLULU—Businesses and nonprofit organizations on the Big Island are finding that applying for a low-interest disaster loan from the U.S. Small Business Administration can be a smart business decision.

Disaster loans provide funding for business owners (including landlords) and private nonprofit organizations with their recovery and are being used to:

- Repair or replace disaster damaged or destroyed property and business assets, such as equipment and inventory;
- Economic Injury (working capital) loans to meet payroll and lease obligations during business downtime caused by the disaster;
- Fund improvements to protect against future damage.

SBA offers businesses and nonprofits two types of disaster loans: a Physical Disaster Loan and an Economic Injury Disaster Loan.

The deadline to apply for a Physical Damage Disaster Loan is Aug. 13, 2018. The deadline to apply for an Economic Injury Disaster Loan is March 14, 2019.

No one is obligated to accept a loan if approved. If the SBA is unable to provide a loan, applicants have within 6 months to request reconsideration

To apply for SBA low-interest disaster loans, Business owners, private nonprofits, homeowners and renters can visit the disaster recovery center for one-on-one assistance or apply online using SBA’s secure website at <https://disasterloan.sba.gov/ela>.

An important step in the recovery process is to register for assistance with FEMA. FEMA and SBA are joint federal partners in Hawaii’s recovery efforts.

For additional information on FEMA programs and how to register for assistance, go to:

www.fema.gov/disaster/4366



POLLING PLACE TO OPEN IN PAHOA ON ELECTION DAY

<http://www.westhawaii.com/2018/07/07/hawaii-news/polling-place-to-open-in-pahoa-on-election-day/>

****Important Reminder/Update: Absentee Walk-In Voting****

Absentee Walk-In Voting will be from:

Primary Election 2018: Monday, July 30, 2018 to Thursday, August 09, 2018

General Election 2018: Tuesday, October 23, 2018 to Saturday, November 03, 2018

Walk-In Locations:

PAHOA COMMUNITY CENTER (PAHOA NEIGHBORHOOD FACILITY

15-3022 Kauhale St., Pahoa, HI

Hours: Monday - Friday (8:00 a.m. - 4:00 p.m.) Saturday (8:00am -12:00pm)

And

COUNTY OF HAWAI'I AUPUNI CENTER, Conference Room

101 Pauahi St., Suite 1, Hilo, HI

Hours: Monday - Saturday (8:00 a.m. - 4:00 p.m.)

ELECTION DATES:

Primary Election Day: Saturday, August 11, 2018.

General Election Day: Tuesday, November 6, 2018.

Polling Place Hours: 7:00 a.m - 6:00 p.m

VOTER REGISTRATION DEADLINE:

Primary Election Voter Registration Deadline: Thursday, July 12, 2018.

General Election Voter Registration Deadline: Tuesday, October 09, 2018.

ABSENTEE APPLICATION DEADLINE:

Primary Election Absentee Request Deadline: Saturday, August 4, 2018.

General Election Absentee Request Deadline: Tuesday, October 30, 2018.

WIKIWIKI APPLICATIONS FOR GENERAL ELECTION:

October 6th & 9th

Malama Market in Pahoa

Hilo Bayfront

Kona Walmart

For more information, please visit the Hawaii County Clerk—Elections Division

<http://www.hawaiicounty.gov/lb-clerk-elections/>

Hawaii County Civil Defense:
To sign up for messages and alerts, please visit:
<http://www.hawaiicounty.gov/active-alerts/>
County of Hawaii—Lava Flow Related Information:
<http://www.hawaiicounty.gov/lava-related/>



Real-Time Air Quality Updates now Available to the Public

To view updates, visit:

https://response.epa.gov/site/map_list.aspx?site_id=12766

Hawaii County Evacuation Guidance on Hazardous Gas Exposure

<http://www.hawaiicounty.gov/lava-related/#ToxicGasPolicy>

Code	Color	SO ₂ levels*	H ₂ S levels*	Health Effect	Response
Blue		0.0 to 0.2	0.0 to 0.6	<ul style="list-style-type: none"> Individuals with pre-existing medical or respiratory conditions may be affected at these levels. Little or no risk to healthy individuals. 	<ul style="list-style-type: none"> People with breathing difficulties should take action to avoid exposure. Everyone should be alert for changing conditions
Orange		> 0.2 to 1.0	0.6 to 7.0	<ul style="list-style-type: none"> Individuals with pre-existing medical or respiratory conditions may experience health effects, like wheezing or chest tightness, and should leave the area. The general public is not expected to be affected in this range. 	<ul style="list-style-type: none"> Individuals with pre-existing medical or respiratory conditions should avoid outdoor activities that cause heavy breathing or breathing through the mouth. Minimize physical activities. Take actions to limit exposure by going indoors or leaving the area. Everyone should be alert for changing conditions.
Red		Above 1.0	7.0 or above	<ul style="list-style-type: none"> The general public may experience minor respiratory issues and should be on alert while minimizing exposure. As concentrations increase, everyone may experience more serious health effects. Severe effects may include choking or difficulty breathing. May affect entire exposed population. 	<ul style="list-style-type: none"> Prepare and be alert for Civil Defense warnings regarding possible evacuation. Take actions necessary to limit further exposure (remain indoors or leave area). Monitor emergency broadcasts and follow instructions. Call 9-1-1, Hawaii Poison Center (1-800-222-1222) or seek medical attention if severely affected.

(visit link above to view full picture)

Island of Hawaii SO₂ & SO₄ Forecast

To view forecast animations please visit:

<http://weather.hawaii.edu/vmap/hysplit/>

Concentration (ppm) averaged between 0 m and 100 m
 Integrated from 1800 31 May to 1700 31 May 18 (HST)
 SO₂ Release started at 1400 31 May 18 (HST)

Concentration (ug/m3) averaged between 0 m and 100 m
 Integrated from 1800 31 May to 1700 31 May 18 (HST)
 SO₄ Release started at 1400 31 May 18 (HST)

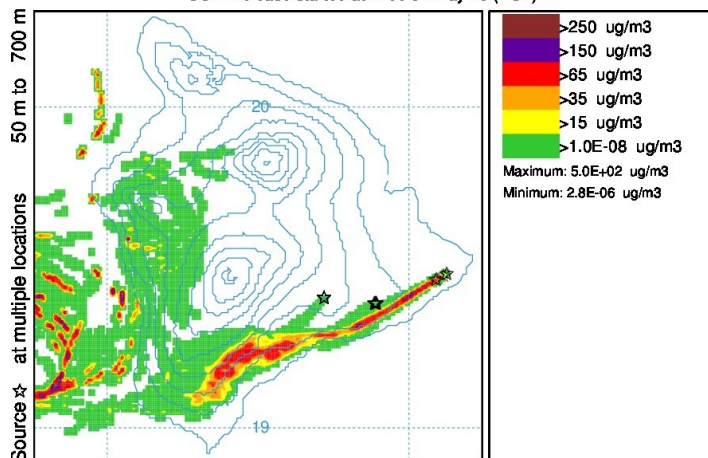
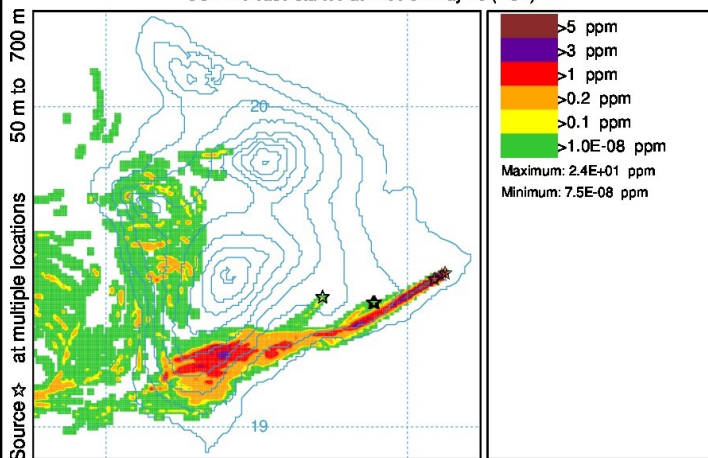


photo by ALAN LAKRITZ

PAHOA 2nd SATURDAY MUSIC & ARTWALK

Saturday July 14 lineup

NO COVER CHARGE! FREE!

PAHOA STRONG! IMUA PAHOA!

At Black Rock Café

FIRE MOUNTAIN 7-10PM

At Boogie Woogie Pizza

GREG LYNCH 6-8PM

At da back of Habitat Tattoo

LIGHTHEART ACTION SYNDICATE 7-10pm

At the Puna Gallery

SILENT CHARITY AUCTION

At Island Naturals

IRON GRINDSTONE 4-6PM

At Kaleo's

RANDY LORENZO 7-10PM

At Lava Shack



PROFESSOR T & THE EAST SIDE SHREDDERS 5-8

THE CHASE 9PM

At Pahoa Village Museum

ALANA MIRROR 6pm, GREEN FLASH 7:45pm

At Stratos New York Pizzeria

DJ UPLIFTER 6:30-8:30 PM

At Tin Shack Bakery

ROBERT SAVERY AND FRIENDS 6-8PM

Pahoa 2nd Saturday Music & Art Walk is a project of community volunteers & Mainstreet Pahoa Association.

Vice Chair: Judiciary

Committee Member: Housing and Transportation

Contact Information:

Hawaii State Capitol, Room 302, 415 South Beretania Street, Honolulu, Hawaii 96813

Telephone: (808)586-6530

Neighbor Island Access dial 974-4000 then extension 66530#, after the recording.

