

Hawaii County Civil Defense:

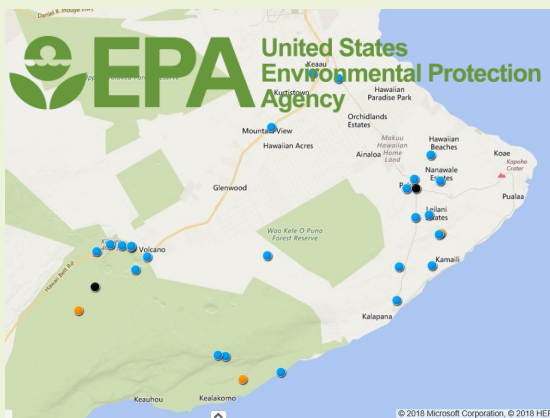
To sign up for messages and alerts, please visit:

<http://www.hawaiicounty.gov/active-alerts/>

County of Hawaii—Lava Flow Related Information:

<http://www.hawaiicounty.gov/lava-related/>

*****Monday, 07/02/18-The Dept. of Health Pahoehoe air monitor was broken but it should be fixed by now*****



Real-Time Air Quality Updates now Available to the Public

To view updates, visit:

https://response.epa.gov/site/map_list.aspx?site_id=12766

Hawaii County Evacuation Guidance on Hazardous Gas Exposure

<http://www.hawaiicounty.gov/lava-related/#ToxicGasPolicy>

Code	Color	SO ₂ levels*	H ₂ S levels*	Health Effect	Response
Blue		0.0 to 0.2	0.0 to 0.6	<ul style="list-style-type: none"> Individuals with pre-existing medical or respiratory conditions may be affected at these levels. Little or no risk to healthy individuals. 	<ul style="list-style-type: none"> People with breathing difficulties should take action to avoid exposure. Everyone should be alert for changing conditions
Orange		> 0.2 to 1.0	0.6 to 7.0	<ul style="list-style-type: none"> Individuals with pre-existing medical or respiratory conditions may experience health effects, like wheezing or chest tightness, and should leave the area. The general public is not expected to be affected in this range. 	<ul style="list-style-type: none"> Individuals with pre-existing medical or respiratory conditions should avoid outdoor activities that cause heavy breathing or breathing through the mouth. Minimize physical activities. Take actions to limit exposure by going indoors or leaving the area. Everyone should be alert for changing conditions.
Red		Above 1.0	7.0 or above	<ul style="list-style-type: none"> The general public may experience minor respiratory issues and should be on alert while minimizing exposure. As concentrations increase, everyone may experience more serious health effects. Severe effects may include choking or difficulty breathing. May affect entire exposed population. 	<ul style="list-style-type: none"> Prepare and be alert for Civil Defense warnings regarding possible evacuation. Take actions necessary to limit further exposure (remain indoors or leave area). Monitor emergency broadcasts and follow instructions. Call 9-1-1, Hawaii Poison Center (1-800-222-1222) or seek medical attention if severely affected.

(visit link above to view full picture)

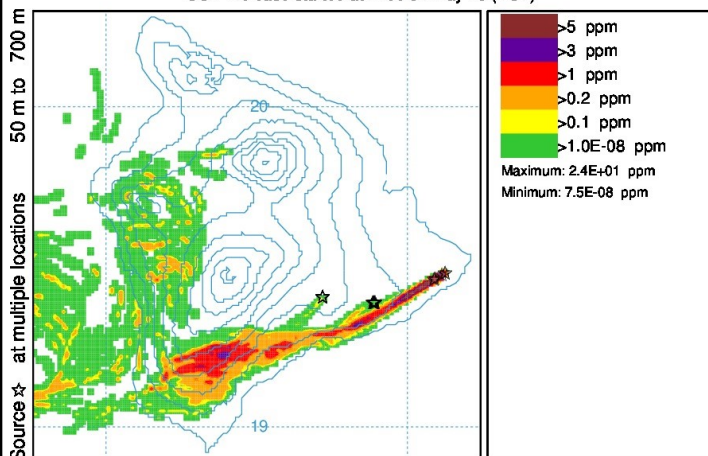
Island of Hawaii SO₂ & SO₄ Forecast

To view forecast animations please visit:

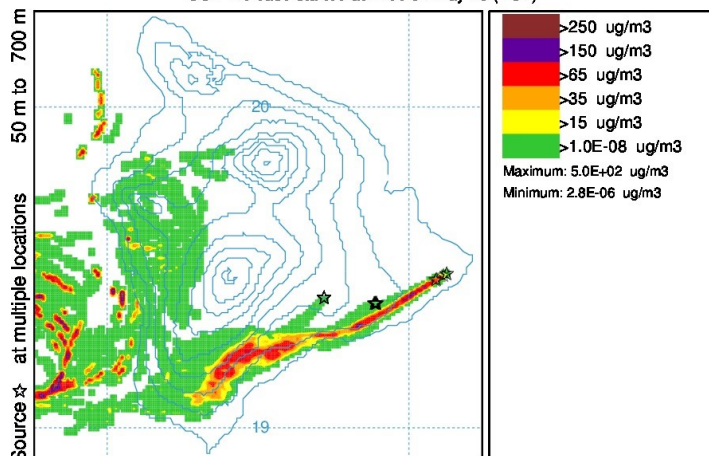
<http://weather.hawaii.edu/vmap/hysplit/>

Concentration (ppm) averaged between 0 m and 100 m
integrated from 1800 31 May to 1700 31 May 18 (HST)
SO₂ Release started at 1400 31 May 18 (HST)

Concentration (ug/m³) averaged between 0 m and 100 m
integrated from 1800 31 May to 1700 31 May 18 (HST)
SO₄ Release started at 1400 31 May 18 (HST)



AWRF METEOROLOGICAL DATA



AWRF METEOROLOGICAL DATA



FEMA

Private non-profit organizations may be eligible for the Federal Emergency Management Agency's (FEMA) Public Assistance Program. Community, volunteer, faith-based, and private nonprofit organizations conducting critical and essential services of a governmental nature that sustained disaster damage may be able to receive FEMA Public Assistance (PA) grants to repair or replace their facilities so they can continue offering critical and essential community services.

Types of organizations that provide critical services that may qualify for FEMA PA grants include:

- Private schools that provide elementary or secondary education or an institution of higher education;
- Hospitals and other medical-treatment facilities; and
- Utilities including water, sewer, and electrical systems.

Types of non-critical, essential services that may be eligible for PA grants include:

- Senior citizen and community centers or other community services;
- Food programs;
- Educational enrichment activities;
- Custodial and day care services;
- Disability residential services;
- Assisted living and low-income housing;
- Homeless shelters and rehabilitation services; and Performing and community arts centers.

Interested private non-profit organizations should email OahuLava1@hi-ema.net or call 808-733-4300 extension 801 for information or to receive a Request for Public Assistance. Deadline for applications is July 7!!!

****Important Reminder/Update: Absentee Walk-In Voting****

Absentee Walk-In Voting will be from:

Primary Election 2018: Monday, July 30, 2018 to Thursday, August 09, 2018

General Election 2018: Tuesday, October 23, 2018 to Saturday, November 03, 2018

Walk-In Locations:

**PAHOA COMMUNITY CENTER (PAHOA NEIGHBORHOOD FACILITY
15-3022 Kauhale St., Pahoa, HI**

And

**COUNTY OF HAWAII AUPUNI CENTER, Conference Room
101 Pauahi St., Suite 1, Hilo, HI**

Hours: Monday - Friday (8:00 a.m. - 4:00 p.m.) Saturday (8:00am -12:00pm)

Hiring 3 Elections officials for walk-ins. If interested, apply at Hawaii County Clerk's office

For more information, please visit the Hawaii County Clerk—Elections Division

<http://www.hawaiicounty.gov/lb-clerk-elections/>



Thank you to everyone for the microunit blessing. <http://www.staradvertiser.com/2018/06/30/photo-galleries/hawaii-officials-attend-blessing-sacred-heart-shelter/>



Working with Bert Lum of the Dept. of Business, Economic Development, and Tourism. Today, we discussed bringing wifi to the microunits in Sacred Hearts.



County has reopened Highway 130 to all traffic , plus parts of Highway 137. For more information visit: <http://www.hawaiitribune-herald.com/2018/07/03/hawaii-news/county-reopens-highway-130-to-all-traffic-plus-part-of-highway-137/>



At the June 30th Townhall. Not much time to talk about immense topics. Viewer wanted me to emphasize that for those who can't wait, county planning and public works will work with you individually to get through maze and are expediting permits for evacuees. Indeed Mayor Kim and Dept heads said in meetings that they intend to this and my earlier talk with State Housing official confirmed. I am glad to hear from resident that they are in fact coming through.

If you were unable to attend the meeting in person, please see Big Island Video News' coverage of the meeting by visiting: <http://www.bigislandvideonews.com/2018/07/01/video-lawmakers-ponder-future-of-puna-in-forum/>

photo by ALAN LAKRITZ

PAHOA 2nd SATURDAY MUSIC & ARTWALK

Saturday July 14 lineup

NO COVER CHARGE! FREE!

PAHOA STRONG! IMUA PAHOA!

At Black Rock Café

FIRE MOUNTAIN 7-10PM

At Boogie Woogie Pizza

GREG LYNCH 6-8PM

At da back of Habitat Tattoo

LIGHTHEART ACTION SYNDICATE 7-10pm

At the Puna Gallery

SILENT CHARITY AUCTION

At Island Naturals

IRON GRINDSTONE 4-6PM

At Kaleo's

RANDY LORENZO 7-10PM

At Lava Shack



PROFESSOR T & THE EAST SIDE SHREDDERS 5-8

THE CHASE 9PM

At Pahoa Village Museum

ALANA MIRROR 6pm, GREEN FLASH 7:45pm

At Stratos New York Pizzeria

DJ UPLIFTER 6:30-8:30 PM

At Tin Shack Bakery

ROBERT SAVERY AND FRIENDS 6-8PM

Pahoa 2nd Saturday Music & Art Walk is a project of community volunteers & Mainstreet Pahoa Association.

Vice Chair: Judiciary

Committee Member: Housing and Transportation

Contact Information:

Hawaii State Capitol, Room 302, 415 South Beretania Street, Honolulu, Hawaii 96813

Telephone: (808)586-6530

Neighbor Island Access dial 974-4000 then extension 66530#, after the recording.

