



Joy A. San Buenaventura

State Representative

District 4, Puna

06.08.2018 Weekly Lava Update

CIVIL DEFENSE COMMUNITY MEETING: PAHOA LAVA FLOW

Date and Time for the next Community Meeting has not yet been scheduled. Civil Defense has indicated that it will likely be sometime next week and that interested attendees are advised to check: <http://www.hawaiicounty.gov/active-alerts/> for announcement of next meeting.

UNITED STATES POSTAL SERVICE at Pahoa extended hours for Sunday 10 am-2 pm.

All mail at Pahoa Post Office for Lanipuna, Leilani Estates, Pohoiki Road, Black Sand, 4-corners, Hwy 130, Hwy 137, Kalapana, Kapoho, Papaya Farms, Seaview and Vacation Land.



Please click links for latest maps: [USGS Maps](#) & [2018 Hawaii Island Eruptions](#)

To sign up for messages and alerts, please visit:
<http://www.hawaiicounty.gov/active-alerts/>
County of Hawaii—Lava Flow Related Information:
<http://www.hawaiicounty.gov/lava-related/>

BIG ISLAND NOW

“Officials Create Housing Solutions for Displaced Residents”

<http://bigislandnow.com/2018/06/05/officials-create-housing-solutions-for-displaced-residents/#.Wxdnh6jZEE4.facebook>

HONOLULU
Star Advertiser



“Lawmaker wants emergency orders to help house lava evacuees”

<http://www.staradvertiser.com/2018/05/31/hawaii-news/lawmaker-wants-emergency-orders-to-help-house-lava-evacuees/>

Hawaii
Tribune Herald

“Housing crunch adds to crisis: Rental exemptions sought for evacuees”



<http://www.hawaiitribune-herald.com/2018/05/31/hawaii-news/housing-crunch-adds-to-crisis-rental-exemptions-sought-for-evacuees/>



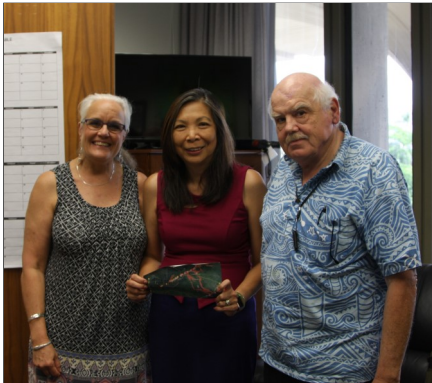
Construction of transitional housing zone. In addition to the 20 transitional bedrooms, this transitional housing area will include a separate building for a common kitchen, showers, and restroom. This is Puna’s version of Ohana Zones outlined in SB2401. Last week, I sent a letter to the governor urging him, among other things, to sign SB2401 into law. If the bill is signed into law, it will help fund these temporary transitional rooms. A big Mahalo to everyone involved in moving this project forward; Hawaii Island United Way/Hope Services for funding, Sacred Hearts for donating land, HPM/Darryl Oliveira, and Habitat for Humanity for providing volunteers, and all the volunteers who used their skill to fast-track these buildings in time for Hurricane Season.



With Gregg Lundberg, President & CEO of Blue Hawaiian Helicopters.

Gregg informed me that Blue Hawaiian Helicopters will donate ALL proceeds of 20-minute \$40 flights to Pu'uhonua O Puna.

I am very grateful for their aide to the community.



With George Massengale and Jean Lilley of Habitat for Humanity. Habitat for Humanity volunteers were involved in the construction of the transitional housing zone being built in Pahoā. We discussed the possibility of directing volunteers and resources to getting more housing built on the Big Island. Today was likely to be the first of many future discussions and I look forward to working with them on future projects. Increasing the number of available housing on the Big Island will be a major part of long term recovery efforts and I am grateful for their willingness to help.

BIG ISLAND NOW

“Office of Elections Mailing Absentee Ballots to Voters in Two Puna Districts”

[\(Click here for link to full story\)](#)

After Hurricane Iselle in 2014, I have been working with Chief Elections officer Scott Nago to ensure that our precincts would still be able to receive their absentee ballots in the case of a future emergency. While I had hoped that we would never see another disaster, I am thankful that my efforts will at least allow for our district constituents the opportunity to vote during these crucial times.

Absentee Walk-In Voting

Absentee Walk-In Voting will be from:

Primary Election 2018: Monday, July 30, 2018 to Thursday, August 09, 2018

General Election 2018: Tuesday, October 23, 2018 to Saturday, November 03, 2018

Walk-In Locations:

Hilo:

COUNTY OF HAWAI'I AUPUNI CENTER, Conference Room

101 Pauahi St., Suite 1

Hilo, HI 96720

Hours: Monday - Saturday (8:00 a.m. - 4:00 p.m.)

For more information, please visit the Hawaii County Clerk—Elections Division

<http://www.hawaiicounty.gov/lb-clerk-elections/>

Update: Chain of Craters Road/Alernate Road



Discussing Chain of Craters Road with KITV News.

[\(Click here to watch full segment\)](#)

The National Park Service and Hawaii Dept. of Transportation have completed work on Chain of Craters Road. The road is now accessible as an emergency exit route, should Highway 130 become impassable. As of right now, residents will only be allowed to use the road as an exit route. In the meantime, an alternate road to Highway 130 ending at Alaili Road will allow for in & out access. Governor Ige assured me he is aware of the need for continued access to remaining Kalapana, Opihikao residents and HDOT is exploring a 3rd access route.

<http://hidot.hawaii.gov/blog/2018/06/01/update-on-emergency-road-work-in-lower-puna/>

2018 Kilauea Eruption- Preliminary Damage Assessment Report:

<http://www.hawaiicounty.gov/research-and-development/>

Business owners who have experienced financial losses or other negative impacts either directly or indirectly because of the current eruption, should complete the Preliminary Damage Assessment Report Form.

****IMPORTANT: Before filling out the PDF fillable form - please FIRST save the blank form to your hard drive or device and then complete and save the form. Filling out the form directly online will result in a blank form.****

Agricultural Loan Division:

<http://hdoa.hawaii.gov/agl/home/emergency-loan-program/>

The Hawaii Board of Agriculture approved an emergency loan program to provide relief and rehabilitation to qualified farmers who have suffered great economic losses in the County of Kauai, City & County of Honolulu due to heavy rains and flooding in April 2018 and in the County of Hawaii due to the current eruption at Kilauea.

For information on emergency loans, Please visit: <http://hdoa.hawaii.gov/agl/>

Or call the Agricultural Loan Division:

Hilo – (808) 933-9975



FIREBALL APPROVED—Online Ownership and Identity Verification ****FREE FOR EVAUCUEES****

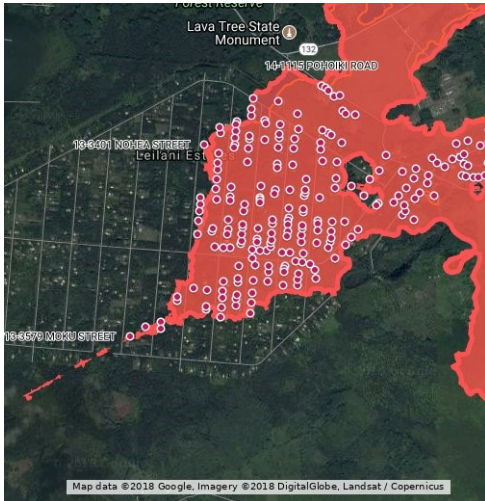
For a limited time, Fireball Approved is offering free verification services for Hawaii residents. They have programmed their property verification order form so that Hawaii residents will receive a prompt confirming that their will be no charge for the service. For more information, please visit their website:

<https://fireballapproves.com/verifications>

Real Property Tax Questions

For those who want to know the status of their homes, call (808) 935-0031. Please be ready to provide your address. Real Property Tax Office appears to be viewing videos and adjusting real property taxes.

If you have further questions regarding your real property tax, please contact the Hilo office at (808) 961-8201



Addresses of Homes Destroyed - Google My Maps

www.google.com

Total Homes Destroyed (6/2/2018): 240 This map layer represents homes lost to the 2018 lava flows in Lower Puna. Each home is defined by the Hawaii County Real Property Tax Department's publicly released information. Addresses are determined to be lost via on the ground reporting, aerial comparisons, USGS lava flow surveys, and disclosures by home owners. NOTE: Google does not render the address perfectly, all appear higher than they should. Also, USGS lava flow data should be used as a visual aid only. This unofficial map is maintained by Dane Ikaika duPont. Lava flow data from: <https://www.google.com/maps/d/u/0/viewer?mid=11tCiLa42FId7GMtg-4UkEoAI9QozTVFD&ll=19.471211955269144%2C-154.90865131842315&z=16>



MĀLAMA IĀ PUNA

LIVE UNITED

HOUSING KŌKUA FOR DISPLACED RESIDENTS

In partnership with HOPE Services, Hawai'i Island United Way is helping displaced Leilani Estates, Lanipuna Gardens, and surrounding area residents.

Financial assistance can include rental deposit, rent, and utility payments.

Once you have found a unit to rent, call **(808) 935-3050** to get your process started.



For help finding rental units, or to offer a unit you own, please visit kokua.alohaliving.com.

Hawai'i Island United Way

HIUW.org



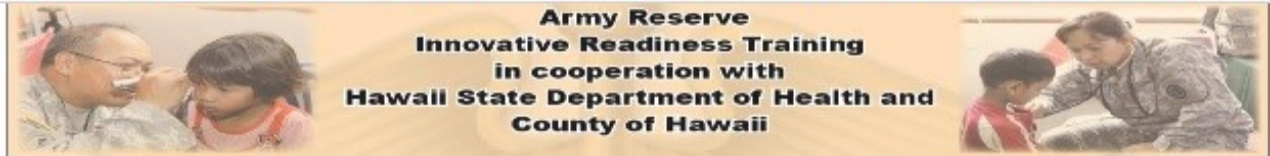
Uniting people, organizations, and resources to build a healthier community.

FREE MEDICAL CARE

MEDICAL HEALTH SCREENING / DENTAL / OPTOMETRY AND MORE

TROPIC CARE 2018

FOR ALL AGES. NO I.D. or Insurance needed



Army Reserve Innovative Readiness Training, in Cooperation with the Hawai'i State Department of Health and the County of Hawai'i present Tropic Care 2018 - offering Free Medical / Dental / Ophthalmological health screening to our community

In collaboration with State of Hawai'i Department of Health, County of Hawai'i, UH Hilo, and the United States Army Reserves, the O'ahu based 1984th United States Army Hospital will conduct a two-week *Innovative Readiness Training* mission providing medical care to underserved communities of Hawai'i. Working closely with the Department of Health, State of Hawai'i and other private corporations, the 1984th USAH, along with other military units, are proud to serve the people in the community.

Please come prepared with:
Water Snacks Current Glasses Current Medications
First Come, First Served - Be prepared for a long wait



HAWAII STATE
DEPARTMENT
OF HEALTH



The Oahu-based 1984th United States Army Hospital, will conduct a two-week Innovative Readiness Training mission providing medical care to underserved communities of Hawaii. Working closely with the Department of Health, State of Hawaii, and other private corporations, the 1984th USAH, along with other military units, are proud to serve the people in the community.

Services

- Medical Health Screenings
- School Sports Physicals
- Dental Services
- Eye Exams
- Hearing Screenings
- Nutritional Services
- Veteran Services
- Prescription Eye Glasses

Returning to Kea'au High School for 9 days

June 18-20, 22-23, 25-28 8am – 5pm

Free food for ages 3-18

Breakfast (7:45am-8:15am, M-F)

Lunch (12pm -12:30pm, M-F)

Food trucks will be on site for food purchase throughout the event.

Please come prepared with water, snacks, current glasses and current medication

For more information please contact the Public Health Nurse [808-974-6035](tel:808-974-6035)

More than ever, our Pahoa businesses need your help!

Enjoy entertainment while you help pahoa businesses, whose loss of income from the disaster, is also affecting employees wages, many of whom already lost their homes

Photo by ALAN LAKRITZ

**PAHOA 2nd SATURDAY
MUSIC & ARTWALK**
Saturday JUNE 9 lineup
NO COVER CHARGE! FREE!
PAHOA STRONG! IMUA PAHOA, KOKUA PAHOA!

At Black Rock Café
HOWLING WOLVES 7-10PM

At Boogie Woogie Pizza Courtyard
DAN NIX 6-8PM

 **At the Emporium**
STUDENT ART SHOW

 **At Island Naturals**
GREEN FLASH 4-6PM

At Kaleo's
RANDY LORENZO 7-10PM

At La Hiki Ola (Kava Bar)
TBA

Lava Shack
PROF. T & THE EAST SIDE SHREDDERS 5-8, SOUL TOWN 9PM

At Pahoa Village Museum
ALANA MIRROR 6-7:30, GREEN FLASH 7:45-9:15PM

At Stratos New York Pizzeria
SON OF MARS 6:30-8:30 PM

At Tin Shack Bakery
ROBERT SAVERY AND FRIENDS 6-8PM

At Wolfs Den
UNITY AND THE BAND OF ANGELS 6-9PM

*Pahoa 2nd Saturday Music & Art Walk is a project of
community volunteers & Mainstreet Pahoa Association.*

Vice Chair: Judiciary

Committee Member: Housing and Transportation

Contact Information:

Hawaii State Capitol, Room 302, 415 South Beretania Street, Honolulu, Hawaii 96813

Telephone: (808)586-6530

Neighbor Island Access dial 974-4000 then extension 66530#, after the recording.

