

MILILANI/WAIPAHAU COMMUNITY REPORT

SENATE DISTRICT 18 – JANUARY 2021

Serving Mililani Town, Waipio Gentry, Waikele, Village Park & Royal Kunia



Aloha Friends and Neighbors,

Happy New Year! Your holiday traditions may have been a bit different this year, but the sentiment of the season was certainly not lost. Despite all of its challenges, I hope the holiday season offered you and your 'ohana a silver lining of hope. After the difficulties we faced in 2020, we welcomed the new year with determination and resolve. Because of this, it was devastating, disheartening and appalling to watch the integrity of democracy threatened by the events that took place at the United States Capitol on January 6th. It in no way reflects the goodness and compassion that defines our communities, and will require all of us to protect the very values we hold so dear.

With the start of the 2021 Legislative session upon us, my staff, colleagues and I returned with a renewed sense of commitment to the people of Hawai'i. It is because of you that we find purpose in our positions of leadership, and we are more determined than ever to showcase Hawai'i's known aloha spirit and our resilience. We certainly missed the joyous festivities of our usual Opening Day celebrations, though it was heartening to begin the Thirty-First Legislative session on January 20th. I was honored to accept the position of Senate Vice President and will also continue to chair our Senate Committee on Education. New safety protocols are in place to ensure the health and wellness of our Senate and staff, so as we adjust to these changing times we remain steadfast in the work ahead. I am grateful to see the grace and understanding of the legislature and our local community in motion.

We know the road to recovery will be a long and arduous one, but as we realized throughout 2020, we can accomplish anything if we do so together. I am grateful to you all for your doing your part to keep Hawai'i safe and healthy, and I am eager to help realize the potential and promise of 2021!



SENATE VICE PRESIDENT

Chair:
Committee on Education

Vice Chair:
Committee on
Higher Education

Member:
Committee on
Ways and Means

Member:
Special Committee on
COVID-19

Hawaii State Capitol
Room 228
(808) 586-7100

senkidani@capitol.hawaii.gov



While the Hawai'i State Capitol is closed to the public, we are continuing to work to keep Hawai'i safe! I am grateful for the support of my 2021 Legislative session staff (L-R): Committee Clerk Scott Fuji, Office Manager Danicia Honda, and Legislative Aides Jade Snow, Felicity Teruya and Kate Ozawa.

OPENING DAY AT THE LEGISLATURE



L-R: Session began on January 20th on the Senate floor; our proud wahine leadership, including Senators Laura Acasio, Rosalyn Baker, Sharon Moriwaki, Donna Kim, Lorraine Inouye, Bennette Misalucha and Joy San Buenaventura (missing Senator Maile Shimabukuro); Education Committee members Donna Kim, Donovan Dela Cruz and I; Assistant Sergeant-at-Arms Park Kaleiwahea and I

INTEGRATED ACADEMY FACILITY GROUNDBREAKING: WAIPAHU HIGH SCHOOL



Congratulations to the staff and students of Waipahu High School for the exciting innovations they will welcome with the construction of the state's first Integrated Academy Facility! This facility will support career academies at WHS, including learning spaces for agriculture, biotechnology, chemistry, culinary and hospitality programs. I was thrilled and honored to be there on January 14th to celebrate the groundbreaking ceremony. Mahalo to Principal Hayashi--we can't wait to see his vision and creativity for this facility to inspire Waipahu High School's students for years to come!

[Click the image](#) to download the Aloha Safe app to your smartphone to stay updated with contact tracing & how to keep your 'ohana safe from COVID-19!



COVID-19 RESOURCES:

1. [State of Hawaii COVID-19 Portal](#)

The official COVID-19 state portal for all the latest updates and information on COVID-19.

2. [Senate Special Committee on COVID-19](#)

The Hawaii State Legislature's official site for updates by the Senate Special Committee on COVID-19. (Senator Kidani is a member of this committee)

3. [One Oahu](#)

The City & County of Honolulu's COVID-19 Response Team. This site shares frequently updated and relevant pandemic updates and resources for the community.

3. [Hawaii State Department of Health](#)

Stay updated with the most recent health updates on COVID-19 in Hawaii.

4. [Federal Pandemic Unemployment Compensation \(FPUC\)](#)

One of the newly extended federal benefits that will add \$300 a week to eligible claimants. FPUC will cover unemployment between Dec. 27, 2020 - March 13, 2021.

PRESCHOOL OPEN DOORS PROGRAM



The Department of Human Services (DHS) is offering a Preschool Open Doors (POD) program to offer affordable preschool opportunities to eligible families for the 2021-22 school year. POD is designed to assist low-and moderate-income households with a subsidy that gives parents a chance to better-afford preschool for their keiki. Children must be born between Aug. 1, 2016, and July 31, 2017, to qualify for the 2021-22 program.

For more information on eligibility, requirements or to submit an application head to the [Patch Hawaii Website](#) and submit your applications by Wednesday, March 31, 2021.



LOWELL KALAPA SCHOLARSHIP PROGRAM

The Hawaii State Federal Credit Union's annual Lowell Kalapa Scholarship Program has begun, offering 20 hardworking recipients a \$5,000 scholarship to further their education.

Applications will be accepted from now through February 1, 2021 so be sure to encourage keiki to apply and submit in the next few months! To learn more about the program, eligibility, and how to apply, please visit the [HSFCU Lowell Kalapa](#)

HMSA KAIMANA AWARDS PROGRAM

HMSA is proud to announce the 2021 Kaimana Awards & Scholarship Program is now accepting applications! Due to the pandemic and changes in the school year, requirements have been relaxed to make the scholarship available to more students. The program recognizes outstanding all-around achievements of public and independent high school students.



The program measures success in academics, athletics, community service, healthy activities, and sportsmanship. HMSA will award up to 15 students \$5,000 scholarships each. For more information on eligibility, requirements or to submit an application head to the [2021 HMSA Kaimana Awards & Scholarship Program Website](#) and submit your applications via email by Friday, Feb. 26, 2021 to kaimana@hmsa.com.

COVID-19 RESOURCES:

1. [Aloha United Way](#)

Call 211 for the only statewide hotline partnering with the Department of Health for help finding food, shelter, financial assistance, childcare, disability services, etc.

3. [MEDQUEST](#)

The Department of Human Services MEDQUEST division provides eligible low-income adults and children necessary access to health and medical coverage through managed care plans. Find out if you are eligible and file your application online for medical assistance coverage

4. [SNAP](#)

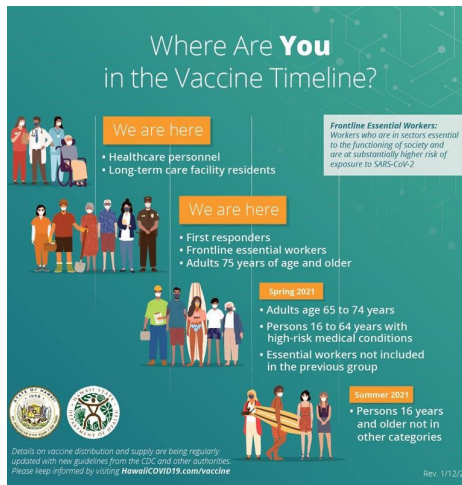
The Supplemental Nutrition and Food Assistance Program is funded through the USDA to qualifying households. Find out if this program will support your family at the link above.

5. [Hawaii Foodbank](#)

This dedicated nonprofit has been at the forefront of this pandemic working tirelessly to provide and distribute food throughout the community. Learn more about their efforts as well as more information on their upcoming food drives or to donate or volunteer.

COVID-19 VACCINATION PROGRAM

The Hawaii Department of Health is working with local, state and federal agencies as well as hospitals and healthcare providers to safely and quickly administer the COVID-19 vaccines. The vaccine is available at Points of Distribution (PODs) and registrations are being accepted based on qualifications. Healthcare personnel, long-term care facility residents, first responders, frontline workers and adults 75 or older are the current groups of individuals who qualify for the vaccine in this first wave of vaccinations. In the coming months additional tiers will open to account for other age groups, high-risk medical conditions, etc. to ensure that the vaccine is available to all.



COVID-19 RESOURCES:

1. [Vaccine Registration](#)

Currently accepting vaccination registrations for kupuna ages 75 and older. Eligibility is required based upon Hawai'i's tiered program and must review the prevaccination checklist before receiving their vaccine.

2. [Hawaii Vaccination Plan](#)

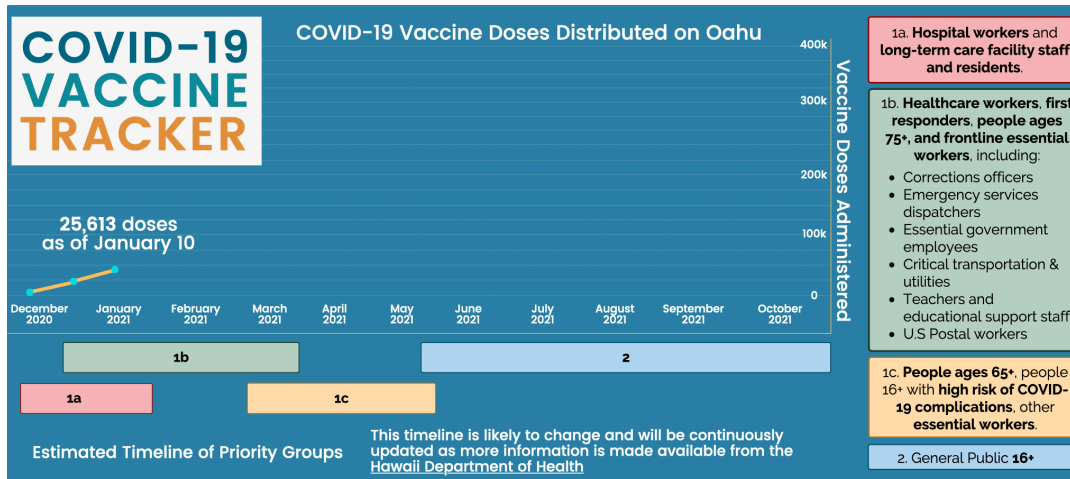
For more information regarding Hawai'i's detailed vaccination plan, please refer to the CDC-approved executive summary noting the operational structure to reach high-risk groups as quickly and efficiently as possible.

3. [Statewide PODs](#)

A list of clinics or Points of Distribution (PODs) note locations throughout the state where you can receive your COVID-19 vaccination.

4. [COVID-19 Vaccine Safety, Expectations & FAQs](#)

One Oahu offers information regarding Hawai'i's distribution plan, vaccine safety, as well as what to expect when receiving the vaccine and a list of FAQs to address community vaccine concerns. It is important to note that people who have recovered from COVID-19 are still urged to receive the vaccine with new variants being introduced into the country and natural immunity varying between individuals. Mask-wearing and hyper hygiene is still urged after receiving a vaccination.



COVID-19 Vaccine Administration, Hawaii 2021

Updated Wednesday, January 13, 2021 (updated weekly)

Reflects all reported doses administered as of Saturday, January 9, 2021



About this Data

Statewide Total

40,386

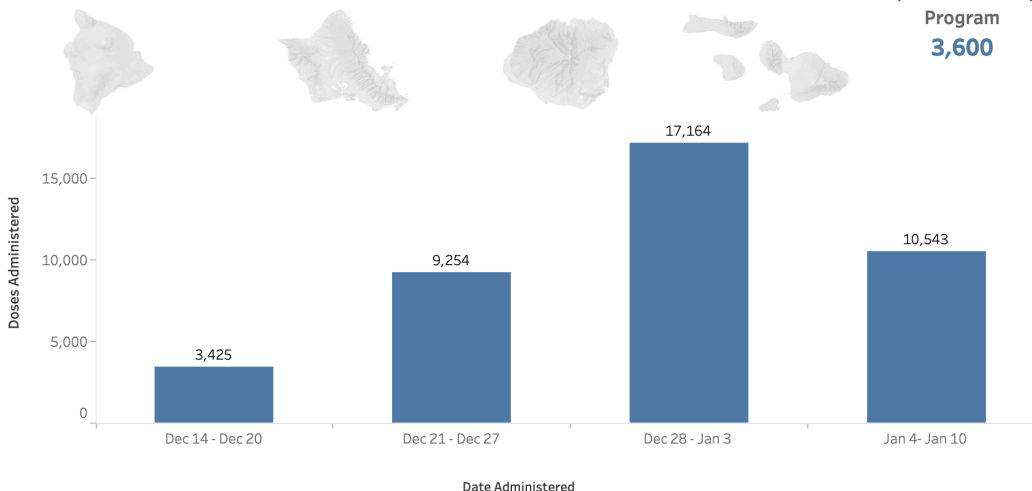
Hawaii County
4,251

Honolulu County
25,613

Kauai County
2,740

Maui County
4,182

Special Pharmacy Program
3,600



COVID-19 VACCINE COST: Vaccine doses are purchased with U.S. taxpayer dollars administered in the U.S. free of cost. Vaccination providers may charge an administration fees, however, which may be reimbursed through insurance. It is recommended that you check with your insurance company prior to receiving the vaccine. (Information and infographics provided by the Department of Health and One Oahu websites)



Hawai'i State Senate

LEGISLATIVE COMMITTEE HEARINGS IN 2021

Ways to follow along and participate in committee hearings in 2021:

- **Livestreams:** All Senate and House committee hearings and floor sessions will be streamed live on **YouTube**.
- **Cable Television Broadcasts:** Selected committee hearings and floor sessions will be broadcast on public access cable television
- **Testimony:** The House and Senate standing committees will be accepting both written and remote testimony via **Zoom**

| @HAWAIISENATE



Instructions for Remote Testimony

- To submit remote testimony, you must also submit written testimony at least 24 hours in advance at www.capitol.hawaii.gov
- Confirm that your name in this field matches your name on Zoom exactly

Testifier's Full Name
(First and Last)

*If planning on testifying via Zoom, this name must match your Zoom name exactly.

How will you be testifying? [more info](#)

Remotely via Zoom during the hearing & submitting written testimony
 Written testimony only

| @HAWAIISENATE



Your Testimony

■ - Not yet submitted.
■ - Successfully submitted.

[Support](#) [Oppose](#) [Comments](#)

Measure	Hearing	
SB20	HEARING HMS 01-23-17	View
<input checked="" type="checkbox"/>	Room: 016 9:00 PM	Zoom Requested
SB28	HEARING HMS 01-23-17	View
<input checked="" type="checkbox"/>	Room: 016 9:00 PM	
HB707	HEARING LAB 01-31-17	Edit
<input checked="" type="checkbox"/>	Room: 309 8:00 AM	

You should see a note in the green "your Testimony" section that says, "Zoom requested"



After Submitting Request

- There may need to be limits to the amount of videoconference testifiers and/or time allotted to each testifier
- If we are not able to accommodate your request to testify, you will be notified via email
- If we can accommodate your request to testify via Zoom, you will receive access three hours before the hearing begins

[HB347](#) [HEARING LAB 01-31-17](#) [View](#)
[HD1](#)
 Room: 309 8:00 AM [Join](#)

| @HAWAIISENATE



Before the Hearing Begins

The Zoom meeting will begin 20-30 minutes prior to the scheduled start time for the hearing.

Be sure to join the Zoom meeting using the first and last name you provided when submitting your written testimony via the Legislature's website so we can identify you in the waiting room.



| @HAWAIISENATE



During the Hearing



- Utilize your computer audio
- Make sure your chat panel is open
- When you are not testifying, turn off/mute your video and microphone
- You will receive a request to share your video before it is your turn.
- When it is your turn to testify and the Chair calls on you, please remember to unmute before addressing the committee



   | @HAWAIISENATE



Tips and Reminders



- Test your audio before joining
- Check the chat panel frequently
- Your internet speed will affect the quality of your video
- Mute any livestream or cable broadcasts of the hearing in the background while your mic is on
- Minimize background noise
- Be mindful of what is in the background of your video
- Do not use virtual background with copyrighted material

   | @HAWAIISENATE



SAFETY PROTOCOLS

The Senate is reinforcing pre-existing protocols and implementing several new measures to prevent and mitigate the spread of COVID-19 while maintaining an open and transparent legislative process.

- Workplace best practices: all employees must wear a face mask, practice social distancing, limit physical contact, and practice good personal hygiene
- Cleaning and disinfecting conference rooms and the Senate chamber before and after use
- Providing employees with personal protective equipment and cleaning supplies
- Installing protective sneeze guards, signage, hand sanitizer dispensers, and air purifiers
- Conducting meetings, hearings, floor sessions, and staff training virtually
- Conducting new employee onboarding online with minimal personal interaction
- Allowing employees to work remotely when possible

NEW OPERATIONAL CHANGES FOR 2021 LEGISLATIVE SESSION

The Hawai'i State Senate has announced new operational changes ahead of the 2021 legislative session.



   | @HAWAIISENATE

PUBLIC ACCESS

Since the State Capitol building will be closed to the public, the Senate will be conducting all committee hearings and floor session virtually. Members of the public will have the opportunity to provide testimony in writing and via videoconference, allowing broader participation by those who previously were not able to get to the State Capitol.

Changes include:

- The Senate will be using Zoom as its online meeting platform
- Committee Chairs will have the option to conduct hearings 100% remotely or offer their members a hybrid set-up with some Senators participating from Senate conference rooms and some joining the hearing remotely.
- Written testimony and videoconference testimony registration will be accepted through the Legislature's website. No in-person testimony will be allowed.
- Testifiers will be given the option to submit remote virtual testimony once written testimony is submitted. Individuals must register no later than 24 hours prior to the committee hearing in order to be added to the remote virtual testimony list
- All Senate standing committee hearing will be live streamed on YouTube. All live streams will be available online and on demand at youtube.com/hawaiiisenate

LEGISLATIVE TIMETABLE

Both the Senate and House have agreed on a modified timetable that has the legislative session convening on January 20, 2021 and adjourning sine die on April 29, 2021.

Modifications include:

- Shortening conference by one week
- Reducing the number of recess days from 13 to 9