



IN THIS ISSUE

- ▶ Message From Kalani pg 1
- ▶ 2014 Special Session pg 1
- ▶ Hāna DOT Meeting pg 2
- ▶ REL Board Meeting pg 3
- ▶ CIP Update pg 3
- ▶ ARM Cuauhtemoc pg 4

MESSAGE FROM KALANI

I would like to thank everyone who attended and participated in our Hāna Community meeting this month. I appreciate everyone's collaboration and respect in hearing other points of view. This meeting turned out to be a great success, with an unprecedented turn out, including Director Ford Fuchigami and his deputies from the State Department of Transportation as well as representatives from the County of Maui and our community. It was a unique chance to discuss all of the Capital Improvement Projects for Hāna with all involved parties simultaneously.

I was honored to welcome Captain Juan Carlos Vera Minjares and his naval crew of the ARM Cuauhtemoc for their inaugural visit to the islands. It was a rare opportunity to create historical ties and build relationships for continued friendship between the Mexican nation and the State of Hawai'i.

SENATOR J.KALANI ENGLISH

HAWAI'I STATE SENATE 7TH DISTRICT

HĀNA, EAST AND UPCOUNTRY MAUI,
MOLOKA'I, LĀNA'I AND KAHO'OLAWĒ



2014 SPECIAL SESSION

The Hawai'i State Senate opened a special session on Wednesday, October 22, 2014 to consider judicial appointments of Jeffrey P. Crabtree and Christine E. Kuriyama to the Circuit Court of the First Circuit (Island of O'ahu), and Margaret K. Masunaga to the District Court of the Third Circuit (Island of Hawai'i).

Following the official opening of the special session, the Senate Judiciary and Labor Committee held a decision-making hearing on the confirmation and consideration of the appointees. Lawmakers earlier heard from the appointees and those who supported or opposed their appointments.

"These Judges have established themselves with great integrity, judicial competence, and diligence," said Sen. English, "we are honored to confirm Judges Crabtree, Kuriyama and Masunaga. I believe that the people of O'ahu and Hawai'i will be well-served under their judgeship."

On Thursday, October 23, the full Senate reconvened to vote on the recommendations made by the Judiciary and Labor Committee. Lawmakers voted unanimously to

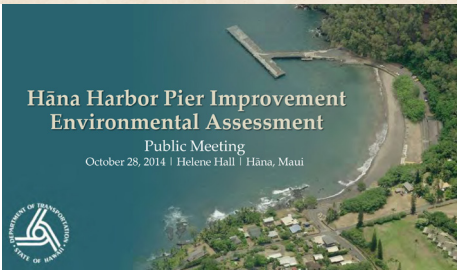
confirm all three judicial nominees to the bench.

During this final floor session, Senators also presented certificates of appreciation and bid aloha to Senators Clayton Hee and Malama Solomon.

Information related to the special session, including testimony and committee reports, can be found online at: www.capitol.hawaii.gov/splsession.aspx?year=2014a.



HISTORIC DEPT. OF TRANSPORTATION MEETING IN HĀNA



Hāna Harbor Pier Improvement Environmental Assessment

Public Meeting
October 28, 2014 | Helene Hall | Hāna, Maui



Sen. English hosted an unprecedented State Department of Transportation (DOT) community meeting at Helene Hall in Hāna on Oct. 28. This was the first time in DOT history that the Director

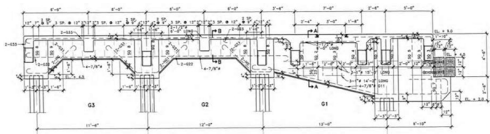
and the heads of the Harbors, Airports and Highway divisions all presented at the same community meeting. Also in attendance from O'ahu were Sen. English's staff members Aunty Libby Kimball, Sharon Lum Ho and Cissy Rees. The Hall was filled with at least 100 Hāna residents. DOT director Ford Fuchigami greeted every one, thanked Sen. English for the evening and introduced his Deputy Directors and the entire transportation staff.

"I am pleased that Ford and all his team came to Hāna to personally address our community," said Sen. English. "When I first became a Senator the majority of the transportation projects that were funded were on O'ahu. Over the years, I worked hard to ensure that our community received funds for our roads, the harbor and the airport. These transportation points are our main arteries to work, food, commodities and healthcare."



Deputy Director Randy Grune of the Harbors Division was first to update the community on the status of the pier, stating that they are still in the early planning stages of an Environmental Impact Statement. Nevertheless, due

to safety and liability concerns something has to be done about the pier and from previous community input, the choice is either to demolish or replace the pier. Grune stated that the mission of the Harbors Division is to manage and operate statewide commercial harbors. However, Hāna Harbor is the only harbor without commercial activity. As for its commercial use the Hāna market will ultimately decide. Additionally, due to geographical considerations there are limited commercial possibilities for this pier. A vast majority of those attending indicated that they are



in favor of demolition because they are concerned about new development changing the sustainable Hāna lifestyle.

Eric Yuasa from the Department of Land and Natural Resources (DLNR), boating engineer, addressed the issue of the wave energy created by the wall at the boat ramp. DLNR consultants determined that the solution is to place rocks along the wall; however, at least 20 feet of pier deck has to be removed in order to do the work.

The Deputy Director of Airports, Ross Higashi outlined plans for Hāna airport. \$20 million has been allocated for improvements to comply with federal laws. This will include a perimeter fence, new fire station and runway adjustment by shortening the south end and lengthening the north end by the same amount. The community voiced concerns about encroachment of the King's Trail, the Hala grove and resident fishing grounds. Higashi and the airports management team assured the community that adjustments will be made in consideration of these concerns.



Jadine Urasaki, Highways Deputy Director updated the attendees on the following projects: Hāna Highway Emergency Slope Stabilization at milepost 10.4, 14 and 16 cost \$8.2 million (M); Uakea Road to Keawa Place project to accommodate 2 way traffic and pedestrian path, cost \$1.5 M, which was completed in September; Hāna Highway resurfacing from Waikani Bridge to Kapaula Bridge, cost \$2.5 M; Hāna Highway Honomanu Bridge to Waikani Bridge, resurfacing, cost \$2.8 M; Kahului Airport Access Road, construction, \$21.8 M; Hāna Highway Improvements, Huelo to Hāna, cost \$7 M; Hāna Highway resurfacing, Pā'ia to Ho'okipa Park, cost \$6-7 M; Hāna Highway Historic Bridge Preservation Plan, develop preservation plan, cost \$1.5 M.

"As Transportation Chair for close to a decade," stated Sen. English, "I have had a very good working relationship with Ford, the deputies and staff at the DOT. They have performed credibly by following the statutes and rules to ensure that our roads, harbors and airports are safe and reliable so, without any hesitancy I found funding for them to do their work."

For more information about the meeting go to: http://hidot.hawaii.gov/wp-content/uploads/2014/10/2014_10_28_Hana_PIM_Presentation_FINAL.pdf



Sen. English and State Dept. of Transportation Director Ford Fuchigami inspect the historic King's trail in Hāna, Maui. Oct. 28, 2014.

REGIONAL EDUCATIONAL LABORATORY OF THE PACIFIC

GOVERNING BOARD MEETING

As a board member of the Regional Educational Laboratory (REL) Pacific, Sen. English traveled to Koror, Palau to attend the governing board meeting held earlier this month. This meeting provided the board members with an annual progress assessment, a review of their annual plan for 2015, reviews of activities, models, successes and challenges as well as completing board business. Other REL board members from Hawai'i include Kathryn Matayoshi, Superintendent for the Hawai'i State Department of Education.

"I am honored to be a part of this prestigious organization," said Sen. English, "This provides us an opportunity to improve education at home as well as increasing the amount of resources the Department of Education can utilize in Hawai'i."

REL Pacific is one of 10 Regional Education Laboratories established and funded by the U.S. Department of Education's Institute of Education Sciences. They connect educators in Hawai'i, American Samoa, Guam, the Commonwealth of the Northern Mariana Islands, the Federated States of Micronesia, the Republic of the Marshall Islands, and the Republic of Palau with research on teacher effectiveness, family and community engagement, college and career readiness, and more. REL Pacific is housed at and operated by the Pacific Center for Changing the Odds at Mid-continent Research for Education and Learning (McREL). McREL is a private nonprofit corporation that draws upon the best of education research to translate what works into innovations and results.

Learn more about the work of REL Pacific, the [Regional Educational Laboratory network](#), and [McREL's Pacific Center for Changing the Odds](#).

<http://ies.ed.gov/ncee/edLabs/regions/pacific/index.asp>
<http://relpacific.mcrel.org>



\$14,533,740 IN FUNDS RECENTLY RELEASED FOR THE 7TH DISTRICT

Kula Hospital	Wastewater system connection, close abandoned cesspools, & facility repairs	\$3,650,000
Maui Memorial Medical Center	Nurse-call system replacement, mechanical & electrical upgrades, air conditioning, re-roofing and other maintenance & repairs	\$6,320,000
Pā'ia Elementary School	Building E – Reroof & Add Solar Vents	\$165,000
Hāna Harbor	Environmental Services additional plans	\$500,000
Lāna'i Community Hospital	Window repairs & replacement; elevator upgrade and replacement	\$2,300,000
Kualapu'u Elementary School	Waterline	\$1,598,740

**J. KALANI ENGLISH
HAWAII STATE SENATE
7TH DISTRICT**

COMMITTEES

**Chair, Senate Committee
on Transportation and
International Affairs**

**Member, Senate
Committee on Agriculture**

**Member, Senate Committee on
Economic Development, Govern-
ment Operations and Housing**

**Member, Senate Committee on
Ways and Means**



**Hawai'i State Legislature
Bill Status and Documents**

<http://www.capitol.hawaii.gov/>

HOW TO REACH US

Hawai'i State Capitol, Room 205
415 South Beretania Street
Honolulu, HI 96813
ph **808-587-7225**
fax **808-587-7230**

From Maui, toll free 984-2400 + 77225
From Moloka'i and Lana'i,
toll free 1-800-468-4644 + 77225
e-mail: senenglish@capitol.hawaii.gov

To receive this newsletter by
e-mail, please send your request to:
english4@capitol.hawaii.gov

Join us on Facebook
[http://www.facebook.com/
/HawaiiSenateMajority](http://www.facebook.com/HawaiiSenateMajority)

**SEN. ENGLISH WELCOMES THE ARMADA REPUBLICA
DE MEXICO (ARM) CUAUHEMOC TO HAWAII**

Earlier this month, Sen. English was pleased to welcome Captain Juan Carlos Vera Minjares and his naval crew of the ARM Cuauhtemoc on their first official visit to Hawai'i. Each year, this ship participates in a global good will tour to act as welcoming ambassadors of Mexico.

Sen. English worked with Consul General Andres Roemer and Honorary Consul Andrew Kluger in making this historic meeting possible. The ARM Cuauhtemoc is the preeminent training vessel in the Mexican Navy for cadets of the Mexican Naval Academy. This was a rare opportunity to create historical cultural ties and pass on cultural knowledge and practices to the current and future generations as well as build relationships for continued friendship between our nations.

"The development and enhancement of international relations is critically important in today's global community, said Sen. English, "It is vital to the progress and peaceful co-existence of all nations."



Sen. English also prepared a Senate proclamation welcoming the ARM Cuauhtemoc to Hawai'i which was presented to Captain Juan Carlos Vera Minjares and his crew. Oct. 6, 2014.



It is always a pleasure to have my staff come visit my home on Maui. (L-R) Sharon Lum Ho, Cissy Rees, Kalani English, and Auntie Libby Kimball. Oct 30, 2014.