

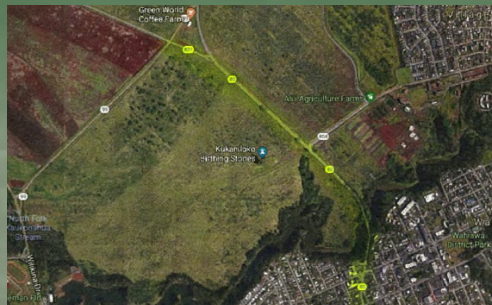
HAWAI'I STATE SENATE - DISTRICT 22

Millani Mauka • Launani Valley • Wahiawā • Waipi'o Acres • Wheeler • Whitmore Village



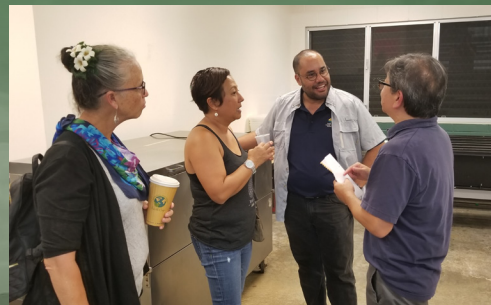
FUNDING FOR WAHIAWA GENERAL HOSPITAL:

Since 2011 we have been able to help Wahiawa General Hospital with **\$9,800,000** in funding for various projects and staffing needs. This session we were able to secure an additional **\$350,000** in Grant-in Aid funding for Wahiawa General Hospital. To ensure a high level of patient care, these funds will be used for improvements to the current nurse call system, pharmacy renovations, and bed replacements for the intensive care unit.



IMPROVING ROADS IN WAHIAWA AND WHITMORE:

We have been working together with the Department of Transportation to improve Kamehameha Highway in and around Wahiawa and Whitmore Village. The Department of Transportation has confirmed that it plans to improve and repave Kamehameha Highway. My colleagues and I were also able to secure **\$799,000** to add sidewalks on Whitmore Avenue from Uakaniko'o Street to NCTAMS.



PROVIDING RECREATIONAL AREAS FOR FAMILIES:

The Department of Land and Natural Resources, State Parks Division, is working to develop a master plan for the Wahiawa Freshwater Park. With your input, our community was able to provide ideas and comments at a charrette that will assist with the future of the project. Based on those ideas, the Legislature included **\$1.5 million** to create walking paths and other site improvements at the Freshwater Park.



SUPPORTING THE LEILEHUA COMPLEX:

This past session, my colleagues and I were able to secure **\$5.3 million** to renovate the Leilehua High School Stadium. This funding will cover the replacement of the existing synthetic turf field and rubberized track surfacing, additional restrooms and concession stand, and renovation of the existing stadium announcer's booth. In addition to these improvements, we secured **\$2.5 million** to repave the Makai Road that surrounds the campus.



Subscribe to our e-newsletter by emailing us at delacruz2@capitol.hawaii.gov



Visit our website to view a list of bills that passed the Legislature and see a breakdown of the state budget.



Follow us at @Donovan Dela Cruz



Follow us at @senatordonovandelacruz

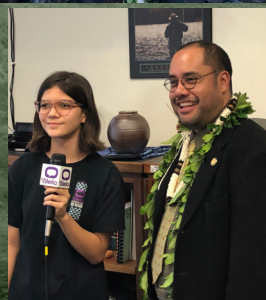


SENATOR DONOVAN M. DELA CRUZ
 415 S. BERETANIA STREET, ROOM 208
 HONOLULU, HI 96813

Working for you...
 AND THE STATE OF HAWAII



Throughout this session, we were able to work with and work for Wahiawa and Whitmore Village. Repainting the Iliahi Elementary School campus, dedicating the improvements to the Wahiawa Community Health Center, meeting with students from Leilehua High School, and honoring our Leilehua alumni are a few ways we advocated for Wahiawa and Whitmore Village.



Aloha!

Mahalo for your continued support throughout this legislative session. Your input has provided me guidance while the Legislature deliberates and decides on many matters that have vast impact on our State. In my role as the Chair of the Committee on Ways and Means, I worked with my colleagues to invest in programs that are critically needed in our communities. Scholarships and reimbursements for local graduates entering the community colleges, Kupuna Care and Kupuna Caregivers, and outreach and treatment for our homeless community were prioritized this session. In addition, we prioritized funding for our schools and highways so that your everyday needs are cared for.

It has been a rewarding session and an honor to represent Senate District 22. Mahalo for your support and I look forward to continuing to work on your behalf and the State of Hawaii.

