



# Joy A. San Buenaventura

State Representative

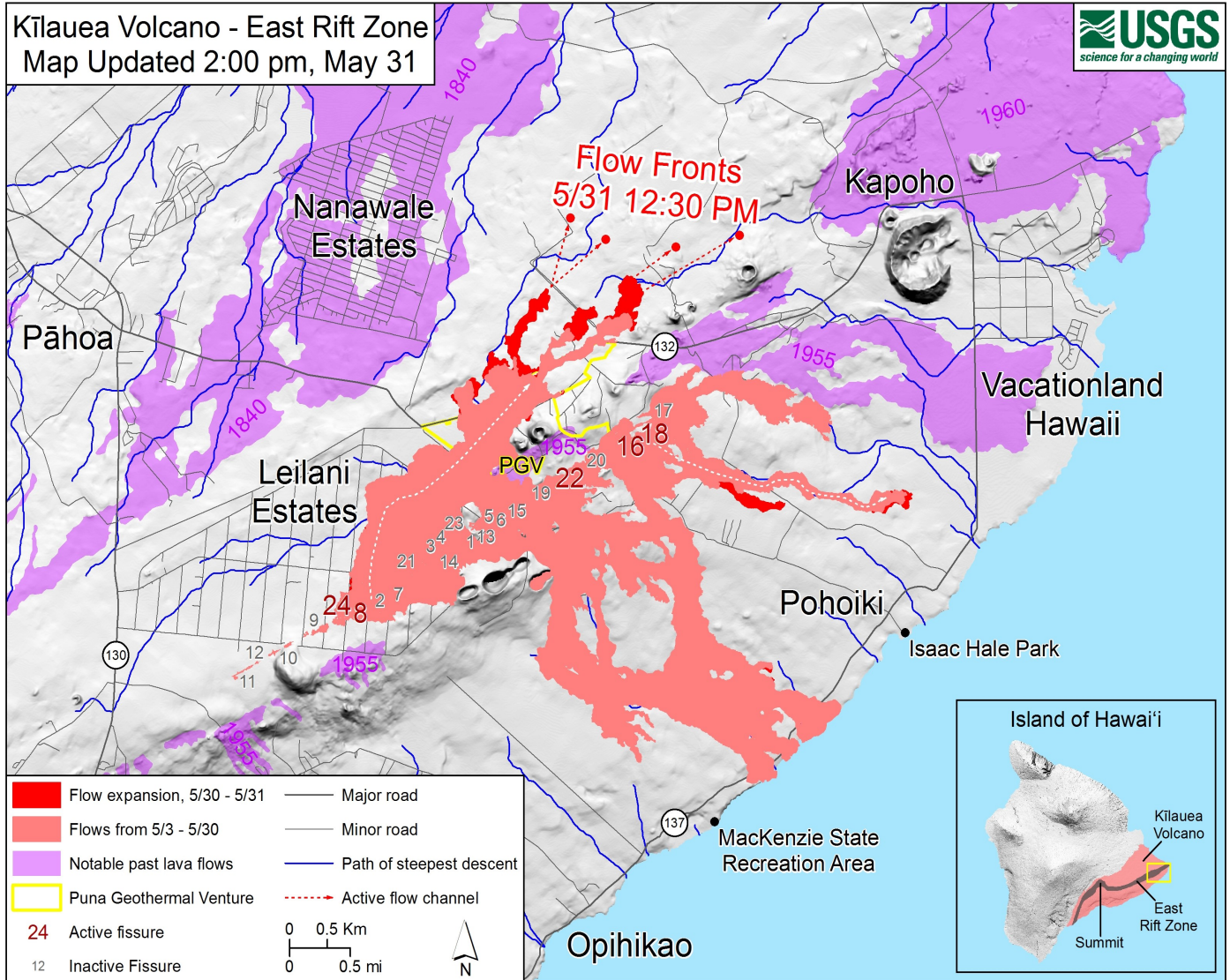
District 4, Puna

## 06.03.2018 Weekly Lava Update

### Notes From 05.28.2018 Community Meeting Meeting:

-Fissure 8's rapid flow crossed Hwy132 leaving beach only access to those who live near pohoiki. Lines of steepest descent imply crossing of beach road and McKenzie Park (hwy137) too so there wont be access to PGV or pohoiki.

-Talked with HDOT Don Smith who said HVNP agreed to have C-of-C road opened For evacuations only BUT HDOT intends to also keep Hwy130 open so there will continue to be in-and-out access for residents (Governor told me Sunday it was his intent to maintain access to Kalapana residents). Leilani evacuees will have curfew raised to 10pm so they can attend meeting or work late shift.



## **FIREBALL APPROVED—Online Ownership and Identity Verification \*\*FREE FOR EVACUEES\*\***

For a limited time, Fireball Approved is offering free verification services for Hawaii residents. They have programmed their property verification order form so that Hawaii residents will receive a prompt confirming that their will be no charge for the service. For more information, please visit their website:

<https://fireballapproves.com/verifications>



## **FIREBALL APPROVED—Online Ownership and Identity Verification**



<http://www.hawaiinewsnow.com/story/38302812/making-a-bad-situation-worse-lava-evacuees-are-running-into-rental-scams>

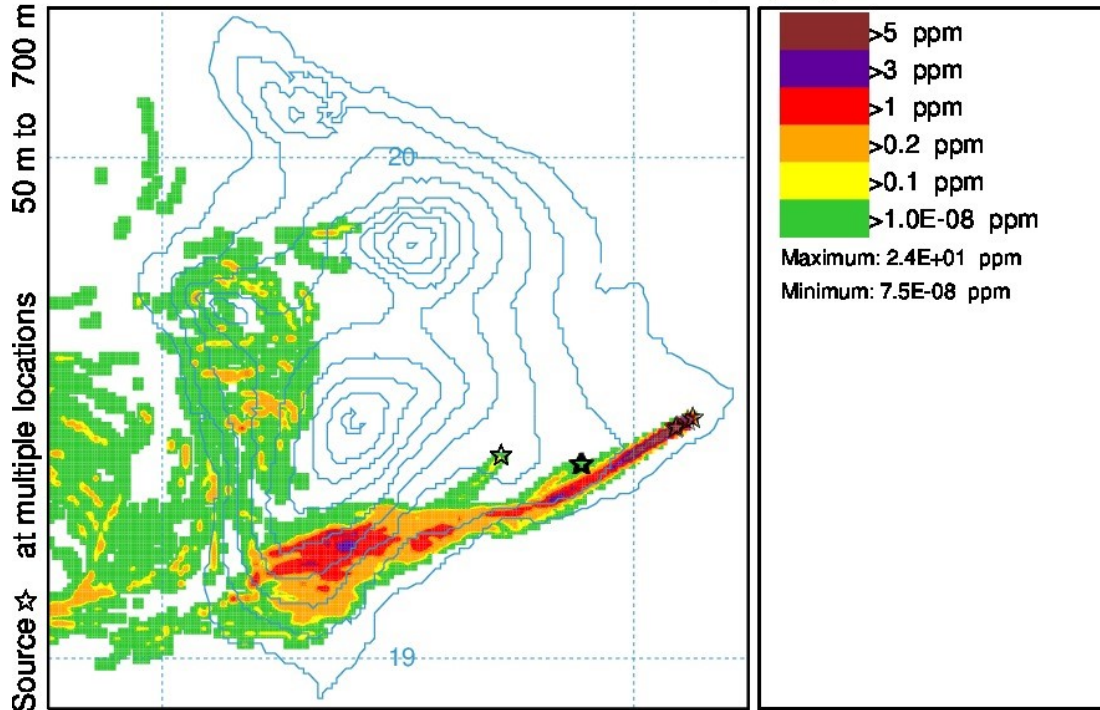
To prevent yourself from falling victim to rental scams, people are advised to make sure to meet the craigslist ad owner face-to-face and make sure he/she has the key to allow you in. This in addition to using online verification services such as fireballapproves.com. **Do NOT wire any deposit or rent.**

# Island of Hawaii SO2 & SO4 Forecast

To view forecast animations please visit:

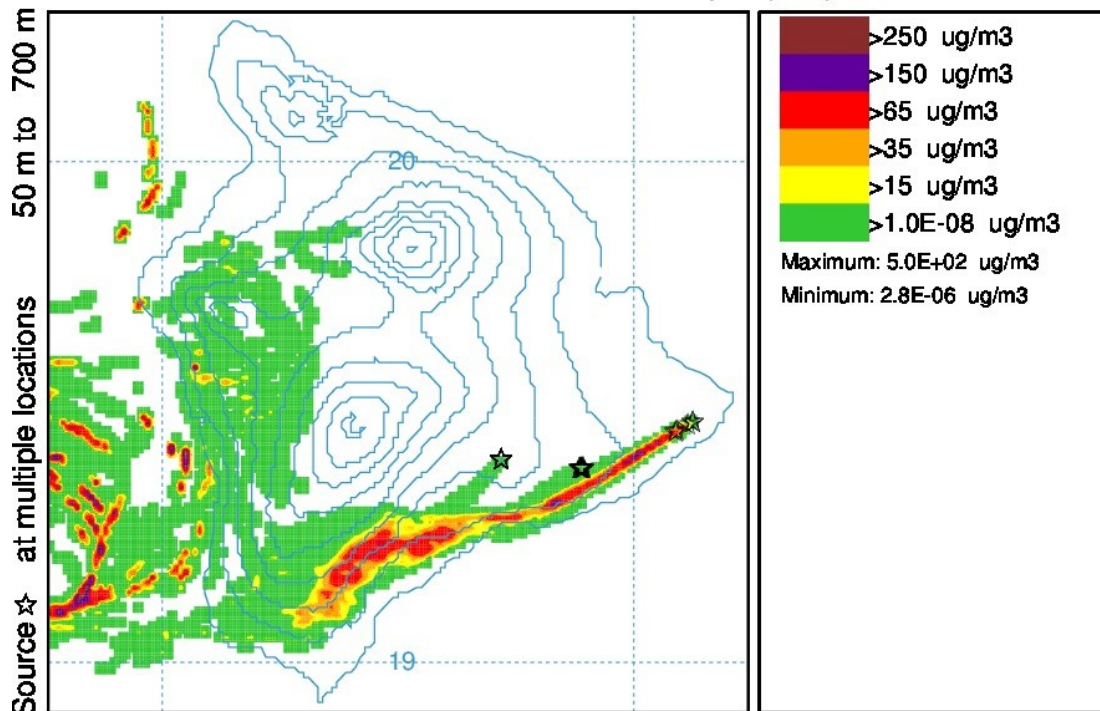
<http://weather.hawaii.edu/vmap/hysplit/>

Concentration ( ppm) averaged between 0 m and 100 m  
Integrated from 1600 31 May to 1700 31 May 18 (HST)  
SO2 Release started at 1400 31 May 18 (HST)



AWRF METEOROLOGICAL DATA

Concentration ( ug/m3) averaged between 0 m and 100 m  
Integrated from 1600 31 May to 1700 31 May 18 (HST)  
SO4 Release started at 1400 31 May 18 (HST)



AWRF METEOROLOGICAL DATA

## Relief for Taxpayers Affected by the Lava Flow in Puna

HONOLULU – As a result of the eruption and lava flow in the district of Puna that caused extensive damage in Hawaii county, Governor David Y. Ige has directed the Tax Department to provide relief and assistance to the affected taxpayers.

The Department today issued a Tax Announcement describing various forms of relief that are available to taxpayers who are affected by the disaster.

### I. MARK TAX RETURNS “2018 PUNA LAVA RELIEF”

“Because taxpayers may have difficulty meeting their tax obligations, the Department will consider requests by affected taxpayers for extensions to file and pay Hawaii taxes and for waivers of penalties and interest on a case-by-case basis,” said Tax Director Linda Chu Takayama. The relief provided by this section applies to all taxes that the Department administers, including general excise, transient accommodations, net income, tobacco, and liquor.

All Hawaii tax returns in which relief is requested in connection with the disaster should be clearly marked “2018 Puna Lava Relief” on the top center of the return. Do not write “2018 Puna Lava Relief” in the “DO NOT WRITE IN THIS SPACE” area in the upper right corner of any return.

Taxpayers who were affected by the disaster, but whose address on file with the Department is not in Hawaii county, should also include a brief statement as to how the disaster adversely affected their ability to meet their tax obligations.

### II. CASUALTY LOSSES

For purposes of Hawaii income tax law, taxpayers may claim all of the casualty loss deductions allowed by section 165 of the Internal Revenue Code of 1986, as amended. Refer to Internal Revenue Service Publication 547 for more information. Casualty losses on business property are deductible in full. The first \$100 of eligible unreimbursed casualty losses on nonbusiness property are not deductible. The remaining loss is deductible to the extent it exceeds 10 percent of the taxpayer’s Hawaii adjusted gross income. The following options are available after determining the amount of losses:

1. Taxpayers may elect to claim a casualty loss deduction on their 2017 income tax returns, instead of on their 2018 income tax returns (an amended return may need to be filed if this option is chosen) because the President of the United States of America issued a federal disaster declaration on May 11, 2018;
2. Taxpayers may elect to deduct the losses on their 2018 income tax returns; or
3. If taxpayers’ casualty losses are more than income, a net operating loss may result. A net operating loss may be used to lower taxes in an earlier year, resulting in a refund for taxes already paid. If properly elected, a net operating loss may be used to lower taxes in a later year. A taxpayer does not have to be a business to claim this benefit; all taxpayers may claim this carryback or carryover net operating loss.

### III. GENERAL EXCISE TAX EXEMPTION FOR INSURANCE PROCEEDS RECEIVED BECAUSE OF A NATURAL DISASTER

Pursuant to section 237-24.7(6), Hawaii Revised Statutes, amounts received under property and casualty insurance policies for damage or loss of inventory used in a trade or business located within an area declared a disaster by the governor are exempt from general excise tax. Refer to the instructions for Forms G-45 and G-49 for more information.

**Tax forms and information are available on the Department’s website at [tax.hawaii.gov](http://tax.hawaii.gov). Additional information is available by calling the Technical Section during business hours at (808) 587-1577, or by e-mailing [tax.technical.section@hawaii.gov](mailto:tax.technical.section@hawaii.gov). Residents on Hawaii Island may contact the Tax Department in Hilo at (808) 974-6396.**



## **THE 2018 PUNA INSURANCE CLAIMS FORUM**

Are you a Puna resident affected by the lava flow and trying to get the right answers and understand your insurance policy? Learn more about the various insurance policies and what they mean, how to communicate with your carrier, and what it all means.

**WHEN:** Thursday June 7, 2018; 3:30 to 6:30 P.M.

**WHERE:** Hawaiian Shores Community Association Building, commonly known as “The Stables”, located in Hawaiian Beaches; 15-2793 Honu St. off Kahakai Blvd.

**WHO/WHAT:** United Policy Holders, Hawaii County Bar Associates and Professionals from Hawaii Public Adjusters will be on hand to present the general means, methods and standard practices for filing claims. Q&A period to follow to allow policyholders and others to clarify concerns about filing disaster claims and find out more information about where to obtain professional help

*\*\*Sponsored by the County and State of Hawaii and Hawaii Public Adjusters\*\**

## Tiny Home Shelters—Update

Work is underway for the placement of Tiny Shelter Homes in Pahoā. I will provide more updates as they become available. In the meantime, HOPE Services Hawaii is working with the Hawaii Island United Way to provide assistance to displaced Leilani Estates residents (please see flyer below). A special thank you to everyone involved for their progress.

*(Picture credit: Senator Russell Ruderman)*



**MĀLAMA IĀ PUNA**

**LIVE UNITED**

## HOUSING KŌKUA FOR DISPLACED RESIDENTS

In partnership with HOPE Services, Hawai'i Island United Way is helping displaced Leilani Estates, Lanipuna Gardens, and surrounding area residents.

**Financial assistance can include rental deposit, rent, and utility payments.**

Once you have found a unit to rent, call **(808) 935-3050** to get your process started.



*For help finding rental units, or to offer a unit you own, please visit [kokua.alohaliving.com](http://kokua.alohaliving.com).*

**Hawai'i Island  
United Way**

HIUW.org



Uniting people, organizations, and resources to build a healthier community.

## 06/03/2018 Civil Defense Update

This is a Civil Defense Message for Friday, 06/01/2018 at 6:45pm.

Hawaiian Volcano Observatory reports that vigorous lava eruptions continue throughout the fissure system in the lower East Rift Zone.

Fissure 8 continues to feed a large channelized flow that has crossed Government Beach Road and Highway 137. The flow is moving downslope toward the ocean through Kapoho Beach Lots. As of early this morning, the flow front was 500 yards from the ocean.

**-Due to lava crossing Highway 137, the following policies are in effect:**

**-There is no access to Kapoho, Vacationland, Highway 132, and Highway 137.**

**-First responders are actively conducting search and rescue missions in affected**

**isolated areas today.**

**-Please contact Civil Defense if you confirm that someone you know is remaining in the isolated area. Call 935-0031.**

On roadways:

Government Beach Road, between Kahakai Boulevard and Papaya Farms Road, is open to Waa Waa and Papaya Farms Road residents only with official credentials. There is no curfew. Volcanic gas and ash emissions remain high at the Kilauea summit and in the fissure system. Residents in communities downwind, including Pahala, Ocean View, and Kona, should take action to limit exposure to gas and ash.

Stay alert to warnings from Civil Defense officials and be prepared to evacuate with little notice.

**<http://www.hawaiicounty.gov/civil-defense/>**

**To sign up for messages and alerts, please visit:**

**<http://www.hawaiicounty.gov/active-alerts/>**

### Real Property Tax Questions

For those who want to know the status of their homes, call (808) 935-0031. Please be ready to provide your address. Real Property Tax Office appears to be viewing videos and adjusting real property taxes.

If you have further questions regarding your real property tax, please contact the Hilo office at (808) 961-8201

### Bodacious Women of Nanawale

Bodacious Women of Nanawale food pantry is seeking volunteers to lend a hand.

The center is stationed at the Nanawale Community Center,  
14-855 Kehau Road, Pahoa.

If you would like more information on how you can help, please visit:

**<https://www.punalavaflow2018.com/bodacious/>**

**Vice Chair:** Judiciary

**Committee Member:** Housing and Transportation

**Contact Information:**

Hawaii State Capitol, Room 302, 415 South Beretania Street, Honolulu, Hawaii 96813

**Telephone:** (808)586-6530

**Neighbor Island Access** dial 974-4000 then extension 66530#, after the recording.

