



Joy A. - San Buenaventura  
State Representative

2017 Legislative Interim E-Newsletter August 2017

September 9, 2017

Community Forum on Roads

Date: 09/09/2017

Place: Hawaiian Paradise Park Activity Center

Time: 1:45—4:15pm

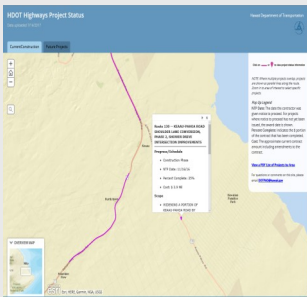


**Tentative Agenda**

- I. Introduction
- II. Hwy 130 update by Deputy Director Ed Sniffen/ Big Island: Donald Smith, District Engineer
  - 1. STIP schedule for Hwy 130
  - 2. Shower Drive construction status
  - 3. \$40 million in 2019 budget for 4-lane – from where to where?
- III. Puna Community Development Plan/KPAG: Larry Brown (Chair)/Jon Olson
  - 1. History and status
  - 2. Alternate access
- IV. How do Private Roads become County Roads? County Councilor Eileen Ohara/Frank DeMarco or designee
  - 1. Any Puna subdivision roads ever become County roads or County maintained roads?
  - 2. Requirements to become a Special Improvement District. Pros/Cons?
- V. Status of HOA Roads: For HPP, Lori Laucik/Ruth Mizuba
  - 1. HPP—paving/maintenance status
  - 2. Other HOA's

**Q&A: (Time permitting)**

**Federal Highway Projects / Highway 130 Projects**



The Department of Transportation Highways Division has recently added a project map to their website.

To view maps click on the picture (left), or go to the Hawaii Dept. of Transportation Website:

- Click the Home tab to view the drop down menu.
- Click on 'Highways'
- Click on the 'Major Projects' tab to view drop down menu.
- Click 'Project Map.'

**07/19/2017 Act 230 Working Group:**

The lab certification by Dept of Health has allowed Oahu’s Aloha Greens and Maui’s Maui Grown Therapies to temporarily close due to their inability to keep up with the pent up demand for their product. Hopefully, more dispensaries will open soon and I will work towards certifying more.



**DOH Registry updates:**

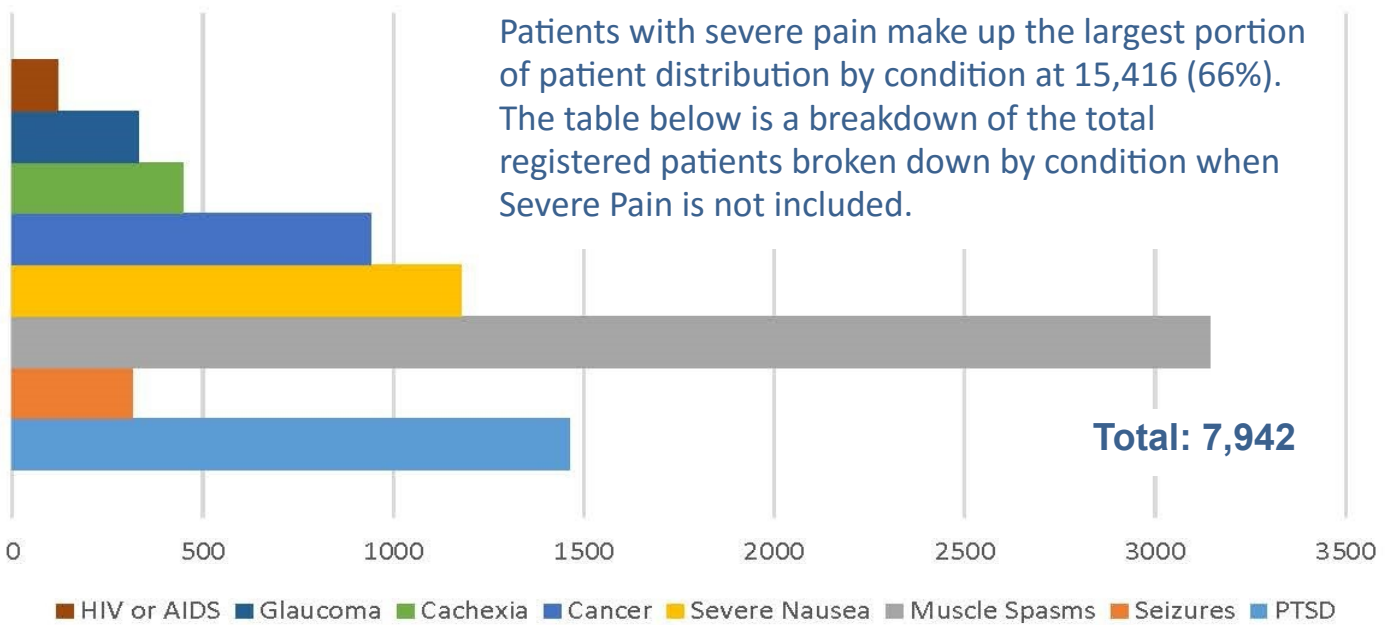
**17,591** registered patients as of June 30, 2017

Increase of **573** from May 31, 2017 (~3.3% increase)

Patients aged **56-65** represent the largest distribution by age making up just under **25%** of total registered patients.

For ongoing updates, see DOH website : <http://health.hawaii.gov/medicalmarijuanaregistry/submenu/program-statistics/>

**Patient Distribution by Conditions not including Severe Pain**



During the breakout meeting, I discussed some of the pending legal issues that we need to plan for.

I also discussed the possibility of integrating small farms into the production system, which would create opportunities for farmers in the Puna district.

Thank you to **Richard Ha** (Lau Ola), **Keith Ridley** (DOH), and **Chris Garth** (Hawaii Dispensary Alliance) for the productive discussion.



## Reporting Child Abuse and Child Neglect:

Please click on the image (below) or follow this link: <https://www.youtube.com/watch?v=2R7jKB96is0> to watch a video by the FCJC and learn more about Hawaii Mandated Reporting laws. Please share this video with others who would like to learn more about mandated reporting and how they can help prevent child abuse.



For more information you can also review the [Mandated Reporter Guide 2015](#).

### Some of the information covered includes:

- What is Child Welfare Services?
- What is the Child Abuse Reporting Law?
- How Does The Law Define Child Abuse or Neglect?
- When Must Child Abuse and Neglect be Reported?
- Who is Mandated to Report Child Abuse or Neglect?
- How Do I Make a Report?
- What Kinds of Information Do I Need To Provide
- What If I'm Not Sure?
- Do I Need to Follow Up In Writing?
- What Happens Following My Report?
- Will the Family Find Out Who Made the Report?
- Will I Need to Testify in Court?
- What Services Can the Dept. Provide to Children and Families?

SPONSORED BY  
EILEEN O'HARA AND THE COUNTY OF HAWAII  
AND MALAMA O PUNA

# GREEN LAKE

RATLUNGWORM AWARENESS  
CONCERT

A FREE EVENT  
WITH LIVE MUSIC  
PERFORMED BY  
**LITO ARKANGEL**  
COSMORCHESTRA,  
KUNZWANANA ENSEMBLE, PLUS MORE  
SOUND BY BOOM EAGNE

HULA & FOOD  
EDUCATIONAL SPEAKERS  
& BOOTHS!

SATURDAY, AUGUST 26  
AT  
**GREEN LAKE**  
12-5 PM

ACROSS FROM KBC RD. ON THE RED ROAD  
ALCOHOL/DRUG FREE, PLEASE NO DOGS  
SPECIAL THANKS  
to Sue Jarvi and Daniel K. Inouye School of Pharmacy,  
Puna Community Medical Center, CTAR, Hawaii Catchment Co.,  
Kua O Ka La PCS, Dr. Martell of Hilo Medical Center, Men of Pa'a  
and Ace Hardware for giving away three hundred rat traps for this event



### Hawaii Volcanoes National Park to Offer Free Admission Days in 2017

The remaining 2017 entrance fee-free days are:

**August 25: National Park Service Birthday**

**September 30: National Public Lands Day**

**November 11-12: Veterans Day Weekend**

For more information check out:

[https://www.nps.gov/havo/learn/news/20161130\\_pr\\_2017feefree.htm](https://www.nps.gov/havo/learn/news/20161130_pr_2017feefree.htm)



**Farmer's Market Nutrition Program**

State of Hawaii Dept of Labor & Industrial Relations Office of Community Services started new Senior Farmer's Market Nutrition Program Worth \$50 in coupons to exchange in 16 authorized farmers market To qualify, you must be 60 years or older; or If Native American, 55 years or older; or Disabled Adult living in elderly housing Maximum income of \$25,290 or \$34,096 per couple.

For Info contact, Hawaii County Econ Opporotunity Council 961-2681

**SNAP** (Was EBT)  
**DOUBLE BUCKS!**

**WHERE:**  
**Maku'u Farmers Market\***  
 And  
**Volcano Farmers Market\*\***

**SCAN \$10; GET \$10 = \$20**  
 When you redeem \$10 in benefits, receive an additional \$10.00 for FREE!

**BUY EXTRA FRUITS & VEGETABLES**

*Mañalo Nui Loa to Hawaii County Council Members: Maile David, Eileen O'Hara, and Jen Ruggles*

**Valid on the 3<sup>rd</sup> Sunday of the Month!!!**  
**The dates are:**  
August 20<sup>th</sup>  
September 17<sup>th</sup>  
October 15<sup>th</sup>  
November 19<sup>th</sup>  
December 17<sup>th</sup>

\*Maku'u Farmers Market - ONLY the first 90 Card Holders per Sunday  
\*\*Volcano Farmers Market - ONLY the first 45 Card Holders per Sunday  
\*\*\* For a LIMITED time only! While Double Bucks last!

**Nanawale Sunday Market/  
Rummage Sale**

**Every Sunday from 7am to 2pm**



Public Access Room neighbor island workshops:  
 Learn how to effectively testify and track new legislation. Help legislators govern by effectively making your voice heard.  
**09/13/17; time: TBD**  
**Hilo Public Library AV Room; 300 Waianuenue Ave.**  
  
**09/14/17; Time: TBD**  
**Pahoa Community Center, Kauhale Street**  
<http://lrbhawaii.org/par/>

# FELINE FRIDAY

ADULT CATS  
(1 YEAR & OLDER)

JUST \$30  
EVERY FRIDAY\*!

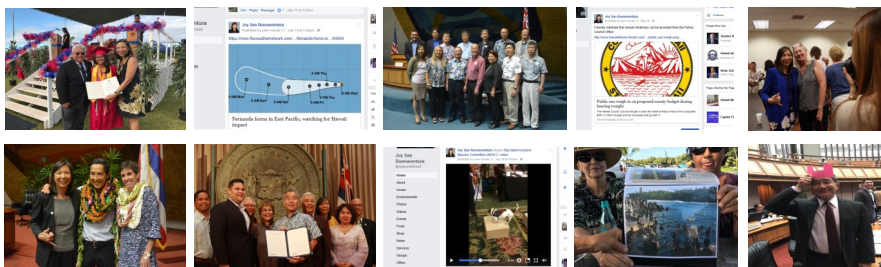


\*Limit 4 cats per year



Please follow me on Facebook!

<https://www.facebook.com/rejoydistrict4/>



Looking for live volcano updates? Check out: <https://hvo.wr.usgs.gov/> for recent Kilauea status reports, updates, and information releases.

If you have a community event that you want featured in my newsletter/e-newsletter e-mail us at [j.honda@capitol.hawaii.gov](mailto:j.honda@capitol.hawaii.gov). No guarantee that it will be included; however, we will do our best.

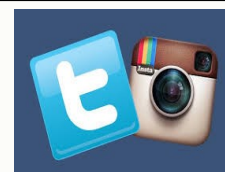
Thank you for subscribing to my E-Newsletter!

This allows me to send out more information about what's going on here at the State Legislature. If you know anyone who would be interested in receiving the E-Newsletter please have them contact my office at: [b.iwasaki@capitol.hawaii.gov](mailto:b.iwasaki@capitol.hawaii.gov)

Please FOLLOW my Twitter and Instagram!

<https://twitter.com/rejoydistrict4>

<https://www.instagram.com/rejoysanbuenaventura/>



Be sure to LIKE my page!

<https://www.facebook.com/rejoydistrict4>

E-mail Address: [repsanbuenaventura@capitol.hawaii.gov](mailto:repsanbuenaventura@capitol.hawaii.gov)

Visit my capitol website for updates on bills and other legislative activities:

<http://capitol.hawaii.gov/memberpage.aspx?member=Sanbuenaventura&year=2017>

Vice Chair: Judiciary

Committee Member: Housing and Transportation

Contact Information:

Hawaii State Capitol, Room 302, 415 South Beretania Street, Honolulu, Hawaii 96813

Telephone: (808)586-6530

Neighbor Island Access dial 974-4000 then extension 66530#, after the recording.

