

Representative Richard H. K. Onishi

End-Session
Newsletter
2019

- District 3**
- Waiakea Uka
- Panaewa
- Kea'au
- Upper Puna
- Kurtistown
- Mt. View
- Glenwood
- Volcano
- Pahala
- Honu'apo

I want to first and foremost thank all of my constituents from District 3 for your continued support. I appreciate all that have participated in the legislative process and communicated your concerns with my office. Your encouragement has helped me to better serve our community.

Currently, I serve as Chair of the Tourism and International Affairs committee (TIA) and this will be my fourth year in doing so. In addition to TIA, I also serve on the Agriculture (AGR) and Consumer Protection & Commerce (CPC) committees. To assist me through the busy session I am supported by my long-time office manager, Tracy (Chang) Weidie, along with my Committee Clerk and Legislative Aides, Tim Coughlin, Isaac Goya, and Tammy Yamamoto.

As your Representative from Hawaii Island I always strive to support our local businesses and to make Hawaii Island a viable place for those that seek opportunity. The revitalization of the Waiakea Peninsula has been one of my goals while serving here in office. Earlier in the legislative year I introduced House Bill 1219 that would have started the ball rolling on a plan to revitalize the area. My goal was to finally get this legislation passed, however in the end we were unable to get agreement from our Senate counterparts and while the bill did not pass this session, I am confident that an agreement can be reached next session. This is something our community needs therefore I will continue to work towards getting this much needed legislation passed.

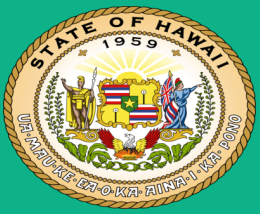
Finally, maintaining Hawaii's position as a premier tourist destination throughout the world is one of our goals, but so is mitigating the effect tourism has on our beautiful island state. We have to continue to ensure that both interests can work together.



Relief for Puna

House Bill 1180 (Act 009) appropriates \$60 million dollars to the County of Hawaii for the devastating lava flow which ran through much of lower Puna. With this money the County can help to rebuild the community and help with infrastructure to get the residents back into their homes. All of the Big Island legislators worked hard to get these funds pushed through the legislature and up to the Governor for signature so we can begin to rebuild our community.

House Bill 1180 (Act 009) signing with Governor David Ige



Rep attended the ground breaking of the Korean War Memorial located next to the Vietnam memorial in Wailoa State Park. This was a long process working with the County and the Korean War Veterans to get the perfect location and design of the memorial .



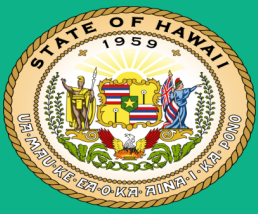
The annual Tourism Day at the Capitol had over 50 vendors from different avenues of tourism. They ranged from numerous hotels, tour companies, local products vendors and tourism associations across the Islands. As the Chair of the Tourism Committee it allows me to get involved with all these different groups to help tourism continue to flourish through out the state .



Rep . Onishi doing a live interview on Olelo Hawaii for "Live at the Legislature" discussing the hot topic of short term vacation rentals across the Islands.



Dr. Patrick Merritt receiving the HISC Award for his tremendous work on the Coconut Rhinoceros Beetle



Representative Onishi with the Hawaii Lodging and Tourism Association

Important Bills Introduced by Rep. Onishi

HB 420

Removes a provision from the Transient Accommodations Tax law designating the Hawaii Convention Center as the location for operation of a Museum of Hawaiian Music and Dance.

HB 422 (Act 026)

Authorizes contracts entered by the Hawaii Tourism Authority for the marketing of all uses of the Hawaii Convention Center to be issued separately from the management, use, operation, or maintenance of the facility.

HB 1219

Allows the designation of areas or regions of public lands according to certain categories. Allows the establishment and implementation of guidelines for the redevelopment of the areas or regions. Establishes and appropriates funds for the Waiakea Peninsula Redevelopment District Revolving Fund.

HB 1375

Appropriates \$874,000 in general funds to support the State of Hawaii Museum of Natural and Cultural History; provided that the appropriation shall not reduce the base budget for the Hawaii Museum.

Hot Topic Tourism Bills:

HB 908—Allocates and appropriates funds and transient accommodations tax revenues to the Hawaii Tourism Authority to implement initiatives, in conjunction with the Hawaii Lodging and Tourism Association, to address homelessness in tourist and resort areas. Requires the Hawaii Tourism Authority to report to the Legislature.

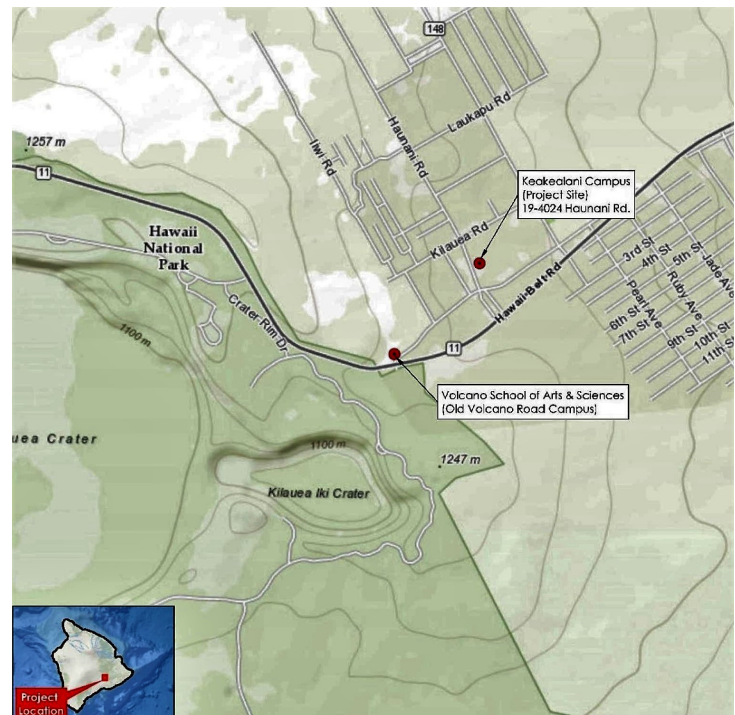
SB 1292—Requires hosting platforms that collect fees for booking services to register as tax collection agents and collect GET and TAT for transient accommodation bookings from operators and plan managers. Converts penalties for violation of TAT requirements from misdemeanor to civil fines. Specifies that “transient accommodations” includes accommodations subject to county regulations as such. (SB1292 HD3 CD1)



Representative Richard Onishi
415 S. Beretania St., Rm. 404
Honolulu, HI 96813

\$12 Million for Volcano School of Arts and Science

Capital Improvement Projects (CIP) were approved by the Legislature through House Bill 1259. Included in that bill was \$12 million for the Volcano School of Arts and Science (VSAS). VSAS is a successfully operating public charter school that has been open since 2001. Currently, the school operates on separate campuses. The funding will be used to help relocate the elementary school from the Volcano Road Campus with the rest of the school at the Keakealani Campus by expanding infrastructure, construction for new facilities, and renovations. In July 2017, a draft environmental assessment report was provided.



Project Location Map