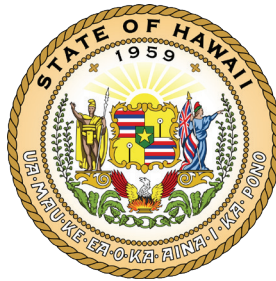


Hawai'i State Capitol, Room 332 | Honolulu, Hawai'i 96813
Phone: (808) 586-9444 | Fax: (808) 586-9499
Email: rephashimoto@capitol.hawaii.gov



Proudly serving District 8 - Kahakuloa, Waihe'e, Waiehu, Puuohala, Wailuku, Waikapu, parts of Kahului

NEWS AND UPDATES FROM Representative Troy N. Hashimoto

January/February 2021

Aloha! Happy New Year! On Jan. 20, the Hawaii State Legislature officially convened for our 2021 session. Opening day was likely the first in Hawai'i's history - with no speeches, none of the usual celebrations, and each of our desks surrounded by plexiglass on the House floor. COVID-19 is still very serious and will impact our daily lives into the future. Hawai'i's economic recovery will likely be slow, and the need to balance the State's budget with the dire needs of our community will be a top priority.

Fortunately, the federal government passed a second round of stimulus funding, which will help our state tremendously - including \$200 million in additional rent relief, funding to assist our schools, additional unemployment benefits, and small business loans - just to name a few. These are difficult times, and it is my hope that a third round of stimulus funds will be contemplated by Congress in the coming months.

In my next update, I will highlight a few notable bills relevant to our community out of thousands introduced. Over the next few weeks, preliminary hearings will be held and a smaller group of bills will advance. In the meantime, I always welcome your input and thoughts. My office remains open and my staff and I are here to help. Please do not hesitate to reach out at (808) 586-9444 or by email at RepHashimoto@capitol.hawaii.gov.



With Rep. Lynn DeCoite and Rep. Justin Woodson on Opening Day.

Mahalo,

County of Maui Service Center relocated

The County of Maui Service Center located at the Maui Mall closed in mid-January to relocate to its newly built location near Target and Safeway in Kahului.

The new location will include the Central Maui Motor Vehicles and Licensing office, Real Property Tax, and Treasury divisions. Later in the year, the building will also be home to the Office of Economic Development's County Resource Center, Department of Transportation, Department of Public Works Development Services Administration (Building, Electrical, and Plumbing Permits), and Liquor Department.

The Treasury division will also now accept over-the-counter payments for solid waste services and will continue to accept payments for real property taxes. The DMVL, Real Property Tax and Treasury divisions will be open for customer service at the new facility as of Jan. 25 with office hours continuing to be from 8 a.m. to 4 p.m., Monday through Friday, except on holidays.

The new center is located at 110 'Ala'ihī St., at the corner of Hookele and 'Ala'ihī streets in Kahului.



Attending the Service Center blessing with Senator Gil Keith-Agaran, Council Chair Alice Lee, and Mayor Michael Victorino.

Capital Improvement Project funds released

Governor David Ige announced the release of funding for the following projects appropriated by the Legislature in a joint effort by Rep. Hashimoto and Senator Keith-Agaran. Most CIP projects are paid for with borrowed bond funds and it must be a large scale renovation, repair, or new construction.

✓ **\$4 million** for 'Āao Intermediate to renovate the old cafeteria into additional classrooms, which will help create capacity for additional students.

✓ **\$500,000** for 'Āao Intermediate to install new perimeter fencing to help with school security.



Community COVID-19 vaccinations underway

The State Department of Health is currently in the process of administering COVID-19 vaccines to Hawai'i residents. However, due to the delay of vaccine deliveries, which is controlled by the federal government, information is constantly changing. Be sure to continually check for the latest information. The DOH is working with major hospitals and other community partners to coordinate various vaccination hubs and mobile centers. Outlets will be announced as they become available.

The Maui Hospital COVID-19 Vaccine Clinic is now open for those who fall under Phase 1a and 1b, but first dose appointments may be delayed. The clinic is located in the front lobby in the Kahului Tower.

Where Are You in the Vaccine Timeline?

In Progress

- Healthcare personnel
- Long-term care facility residents

Frontline Essential Workers:
Workers who are in sectors essential to the functioning of society and are at substantially higher risk of getting COVID-19

In Progress

- First responders
- Frontline essential workers
- Adults 75 years of age and older

Spring 2021

- Adults age 65 to 74 years
- Persons 16 to 64 years with high-risk medical conditions
- Essential workers not included in the previous group

Summer 2021

- Persons 16 years and older not in other categories

Details on vaccine distribution and supply are being regularly updated with new guidelines from the CDC and other authorities. Please keep informed by visiting HawaiiCOVID19.com/vaccine

Rev. 1/12/21

To register or schedule an appointment, please go to:

www.mauihealth.org/covidvaccine/ or
www.hawaiiicovid19.com/vaccination-registration/

You may also hear from your healthcare provider, your employer, or the media regarding your eligibility.

- ▶ **Phase 1a** started in December for Health Care Workers and first responders.
- ▶ **Phase 1b** is for those who are age 75 and older and front-line essential workers. Includes first responders, corrections officers and staff, emergency service workers and individuals essential for federal, state and local government operations, critical and public transportation workers, utility workers, teachers, child care workers and education support staff, along with U.S. Postal Service workers. This phase started in January.
- ▶ **Phase 1c** is predicted to begin between March and May, and will be offered to those ages 65 to 74, individuals with underlying medical conditions and other essential workers.
- ▶ **Phases 2 and 3** are projected to begin in the early summer and will be offered to the general population.

You can find information, data on

the number of vaccinations administered, and updates on the vaccine timeline at: www.hawaiiicovid19.com or call the DOH COVID-19 Vaccine Hotline: (808) 586-8332.

Speed limit changes

The speed limit on Honoapiilani Highway from Kuikahi to Kuihelani Hwy has been reduced from 45 mph to 35 mph.

According to the State Department of Transportation, the purpose of the reduction is to provide a more consistent posted speed throughout this urbanized corridor, improve safety of all vehicular, pedestrian and bike users, and provide safer vehicular turning movements onto and off of Honoapiilani Highway.

Within the urban core of the Wailuku/Waikapu region, this segment of Honoapiilani Highway is a two-way, two-lane principal arterial with auxiliary turn lanes and multiple signalized and unsignalized intersections that primarily serve a mix of residential, commercial, and industrial uses. To the immediate north of Kuikahi Drive, Honoapiilani Highway is posted 35 mph and serves the Kehalani master planned subdivision. To the immediate south of Pilikana Street, Honoapiilani Highway is posted 30 mph and serves the Waiolani residential subdivision.

For more information call the Maui DOT office at (808) 873-3538.

Updates on Da Bee

The County of Maui Department of Management has announced changes to its Da Bee shuttle bus program to further benefit commuters during construction in Wailuku Town.

Da Bee's Route B now includes a stop at Ma'alaea Park & Ride (aka "Mud Flats") where people can park and be transported to various "flower" stops in Wailuku. The route will run throughout the day and arrive at each stop every 30 to 40 minutes. The first shuttle will leave the Mud Flats at 6:30 a.m. and the last shuttle will return to the parking area at 6 p.m.

There is no cost to ride Da Bee. Shuttle service is available Monday through Friday, except holidays.

For shuttle schedules, route maps and to sign up to Ride Da Bee for free, please visit www.WailukuLive.com/dabee



Got a Question?
Call Da Bee Hotline
Mon-Fri: 6-6pm (HST)
808-877-4242, EXT 2

Testifying is now more accessible than ever

Instead of taking a flight to Oahu to testify on important bills, you can now participate in democracy from the comfort of your own home. Since COVID-19 poses a high risk to large gatherings, in-person attendance at committee hearings at the State Capitol have been suspended for the 2021 legislative session. All committee hearings will be conducted virtually using Zoom. There are many ways for you to follow each hearing and participate. Here is a step-by-step process.

Step 1 - Log in

Go to capitol.hawaii.gov to “Sign-in” or click the “Register” link at the top right corner of the website. You must have or create an account to testify.



For help with using the website or if you do not have internet access, contact the Public Access Room by calling (808) 587-0478, emailing par@capitol.hawaii.gov, or visiting lrbhawaii.org/par

Step 2: Make a request to testify

- ▶ Select the bill you would like to testify on. If you wish to testify remotely, you must also submit written testimony.
- ▶ When submitting your written testimony, confirm that the name you enter reflects how you will identify yourself on Zoom.
- ▶ You will then be asked, “How will you be testifying?”
- ▶ Select, “Remotely via Zoom during the hearing & submitting written testimony”.

Testifier's Full Name

(First and Last)

Joe Aloha

*If planning on testifying via Zoom, this name must match your Zoom name exactly.

How will you be testifying? [more info](#)

- Remotely via Zoom during the hearing & submitting written testimony
- Written testimony only

Step 3: After submitting your request

Your Testimony

- - Not yet submitted.
- - Successfully submitted.

[Support](#) [Oppose](#) [Comments](#)

Measure	Hearing	
SB20 ✔	HEARING HMS 01-23-17 Room: 016 9:00 PM	View Zoom Requested
SB28 ✔	HEARING HMS 01-23-17 Room: 016 9:00 PM	View
HB707 ✔	HEARING LAB 01-31-17 Room: 309 8:00 AM	Edit

- ▶ You should see a note in “Your Testimony” section that says “Zoom Requested”.

This confirms your request has been submitted.

Step 4: If your request can be accommodated you will receive access to the Zoom link for the hearing.

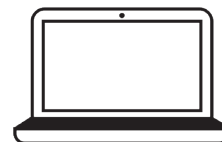
- ▶ To access the Zoom link, you will need to log in to your account and join the meeting link. It will be available to you in the “Your Testimony” section.

[HB347](#) [HEARING LAB 01-31-17](#) [View](#)

[HD1](#) Room: 309 8:00 AM [Join](#)

Step 6: During the hearing

- ▶ All testers must utilize their computer audio to participate.
- ▶ It is strongly encouraged that you share your video when testifying.
- ▶ Please have your camera and audio muted until it is your turn to testify.



Step 5: Before the hearing



- ▶ The Zoom meeting will begin 20-30 minutes prior to the scheduled hearing.
- ▶ Please join the Zoom meeting using the first and last names you used when submitting your written testimony.

Important Legislative Days

January

20 - Opening Day

February

19 - First Lateral

Bills with multiple committee referrals must be on their way to their final committee.

March

7 - Crossover

The House and Senate exchange their remaining bills for consideration. Then the process begins again, House bills are sent to the Senate and Senate Bills are sent to the House.

17 - Budget Crossover

The House and Senate exchange their versions of the state budget for consideration.

April

15 - Second Crossover

The House and Senate send back each other's bills after they have gone through their respective committees. If amendments were made, the bills have to go through conference hearings to work out the differences.

29 - Adjournment Sine Die

The last day of the 2021 Session, and the deadline for bills to pass before the second half of the biennium.



**Representative
Troy N. Hashimoto**
Hawai'i State Capitol
415 South Beretania Street, Room 332
Honolulu, Hawai'i 96813

(808) 586-9444
RepHashimoto@capitol.hawaii.gov
*If you would like to be added to my email list,
please email me, and I will gladly add you.*

 /rephashimoto

Stay safe: AlohaSafe Alert app

ADD YOUR PHONE
TO THE COVID FIGHT
HELP HAWAI'I STOP COVID-19

The AlohaSafe Alert application was announced late last year for use by the County of Maui, making our community the first in the state to utilize this resource to assist in curbing the spread of COVID-19. The application has now been rolled out statewide.

The application is free and can be downloaded now from the Apple Store or Google Play. There are currently 14 States and the District of Columbia that

are participating in the Google, Apple Exposure Notification (“GAEN”) system.

After the app is downloaded, the smartphone uses Bluetooth technology to anonymously communicate with other phones that also have a GAEN application. Devices will automatically “ping” each other, measuring the strength of the Bluetooth signal and the duration of a contact.

Location and identifiable information is not used or collected for privacy reasons. If an individual tests positive for COVID-19, they will be contacted by a contact tracer who will ask if the person had downloaded the AlohaSafe app. If so, the person will receive a verification code that will enable an anonymous notification to others that they might have been exposed to the virus. To trigger a notification alert, devices must have been within 6 feet of each other for at least 15 minutes in the past 14 days.

For more information, visit www.alohasafealert.org or contact the State Department of Health at doh.alohasafe@doh.hawaii.gov



**Download the AlohaSafe Alert app
and help protect your 'ohana while
protecting your privacy**
www.alohasafealert.org