

NEW DAY IN HAWAII



STATE OF HAWAII
DEPARTMENT OF TRANSPORTATION
Kapolei-Makakilo-Kunia Town Meeting
June 30, 2011



Hawaii Department of Transportation **PRESENTATION AGENDA**

■ **Projects In-Progress**

- H-1 Kapolei Interchange Complex
- H-1 Concrete Pavement Preservation
- H1 and H201 Freeway Resurfacing
- 511 Advanced Traveler Information System

■ **Upcoming Projects**

- Fort Barrette Road Widening
- Leeward Bikeway
- H-1 PM Contraflow
- H-1 Pearl City, Waimalu, Airport Viaduct Repairs
- H-1 Middle Street Merge Widening



Highways Division

H-1 KAPOLEI INTERCHANGE COMPLEX

IN-PROGRESS





H-1 Kapolei Interchange Complex **WESTBOUND RAMPS**

COMPLETED

**New Makakilo Drive On-Ramp &
Farrington Highway Off-Ramp (Exit 1E)**

Opened: May 16, 2011





H-1 Kapolei Interchange Complex

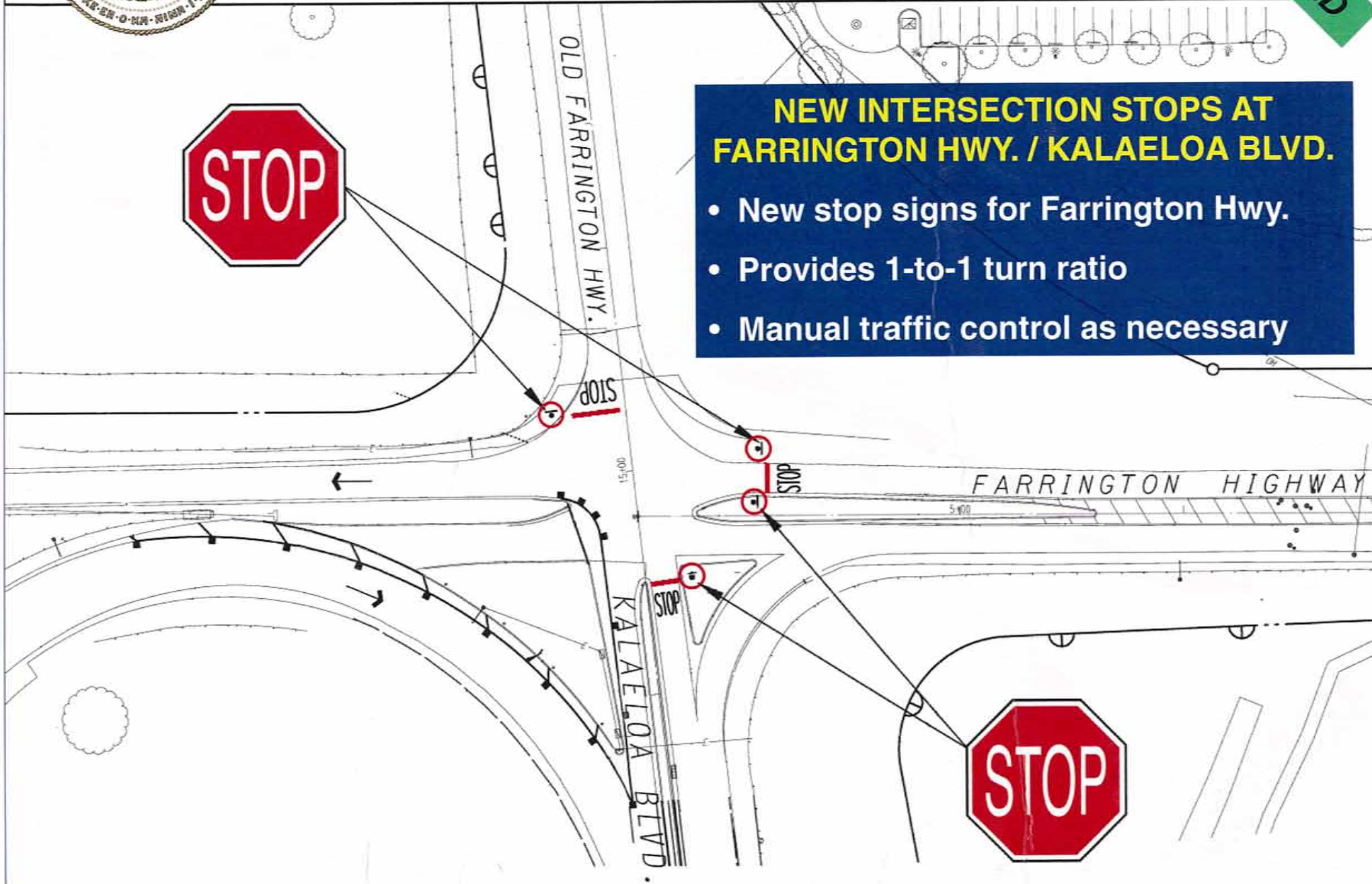
TRAFFIC PATTERN CHANGES

COMPLETED



NEW INTERSECTION STOPS AT FARRINGTON HWY. / KALAELOA BLVD.

- New stop signs for Farrington Hwy.
- Provides 1-to-1 turn ratio
- Manual traffic control as necessary





H-1 Kapolei Interchange Complex

FARRINGTON HWY. OVERPASS CLOSED

IN-PROGRESS

Traffic using the new Makakilo Drive on-ramp and the new H-1 Exit 1E will be able to proceed west on Farrington Hwy.

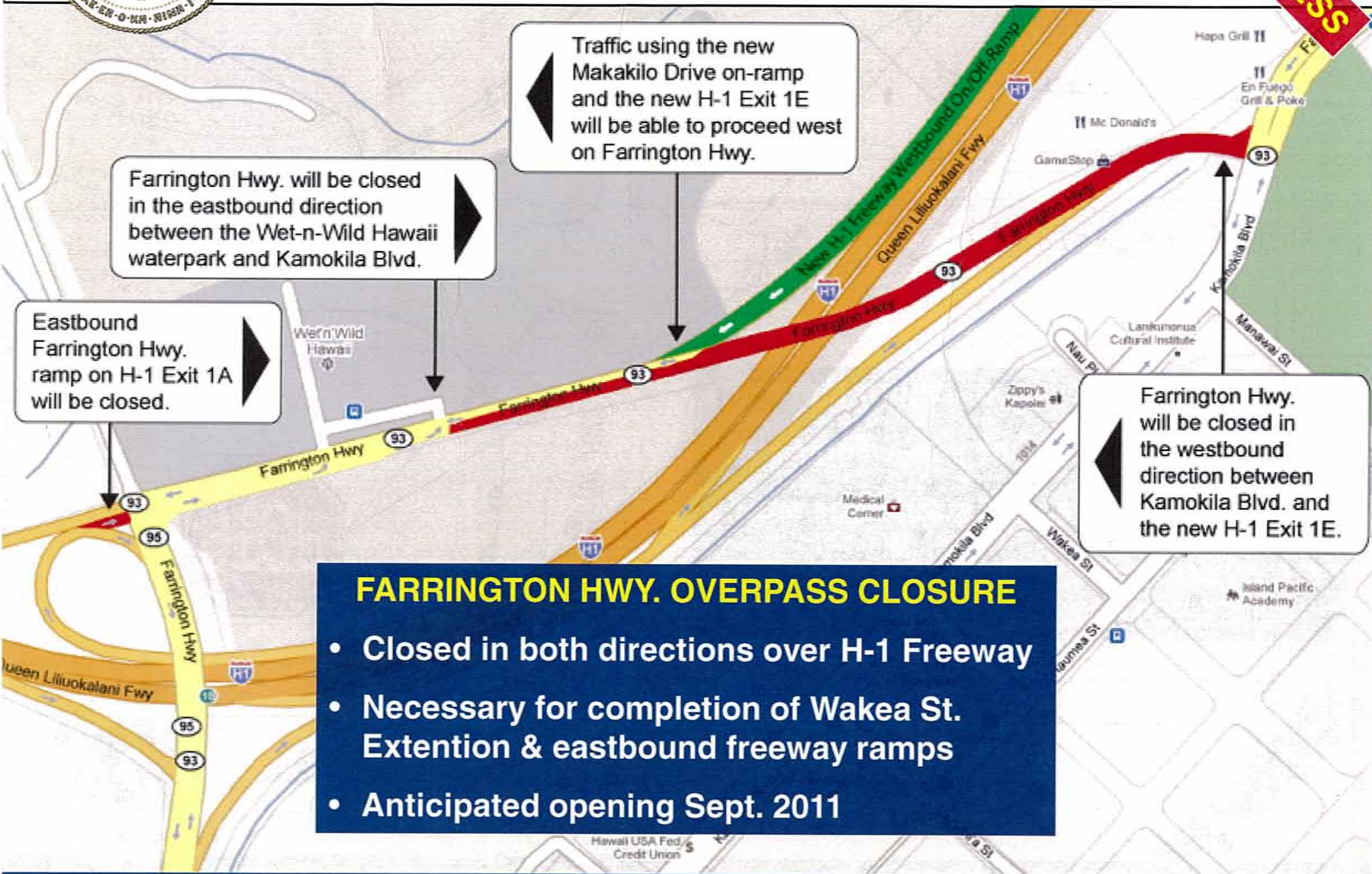
Farrington Hwy. will be closed in the eastbound direction between the Wet-n-Wild Hawaii waterpark and Kamokila Blvd.

Eastbound Farrington Hwy. ramp on H-1 Exit 1A will be closed.

Farrington Hwy. will be closed in the westbound direction between Kamokila Blvd. and the new H-1 Exit 1E.

FARRINGTON HWY. OVERPASS CLOSURE

- Closed in both directions over H-1 Freeway
- Necessary for completion of Wakea St. Extension & eastbound freeway ramps
- Anticipated opening Sept. 2011





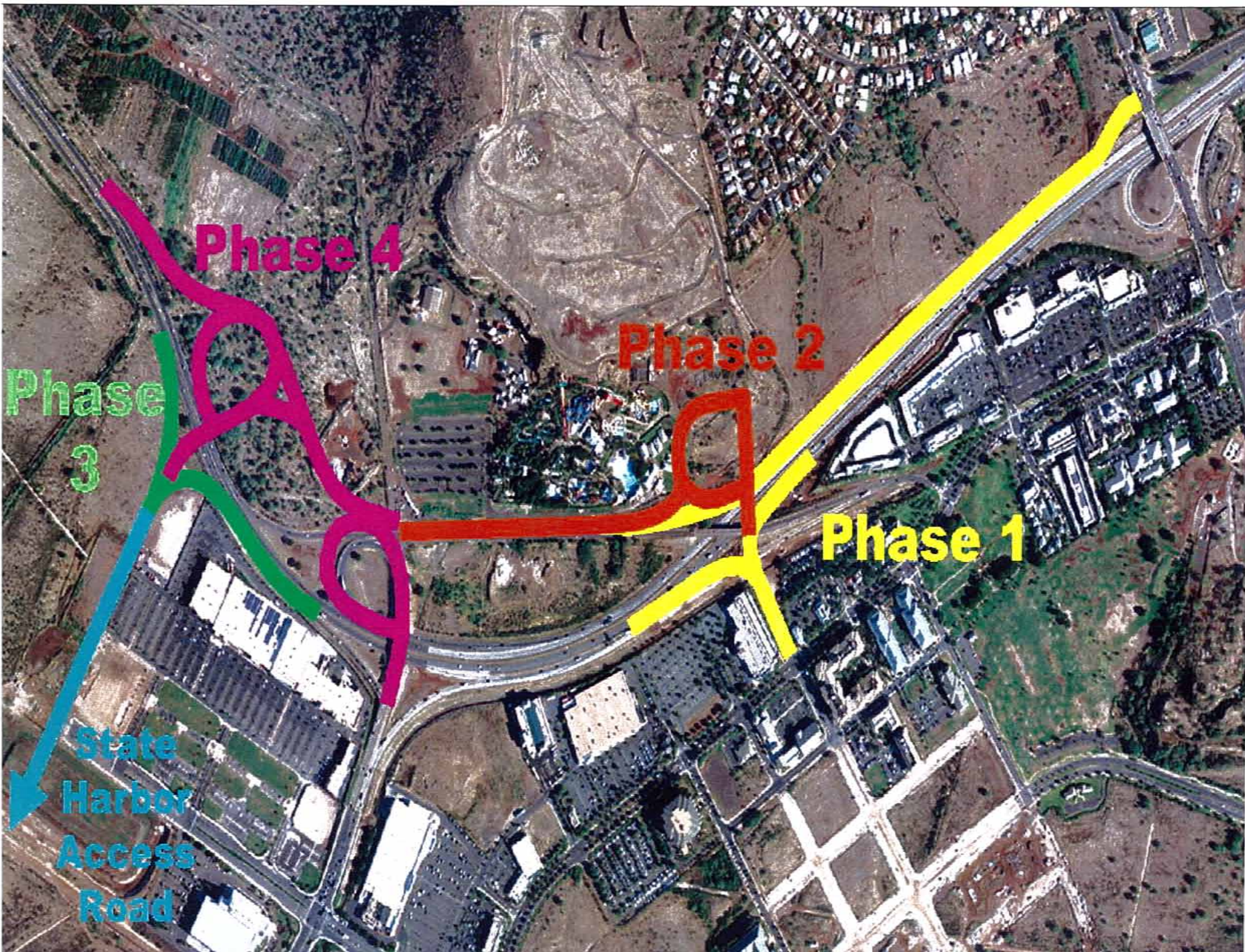
H-1 Kapolei Interchange Complex **EASTBOUND RAMPS**

IN-PROGRESS

New Wakea St. Extension & Eastbound On/Off-Ramps

Est. Completion: Sept. 2011





Phase 4

Phase 2

Phase 3

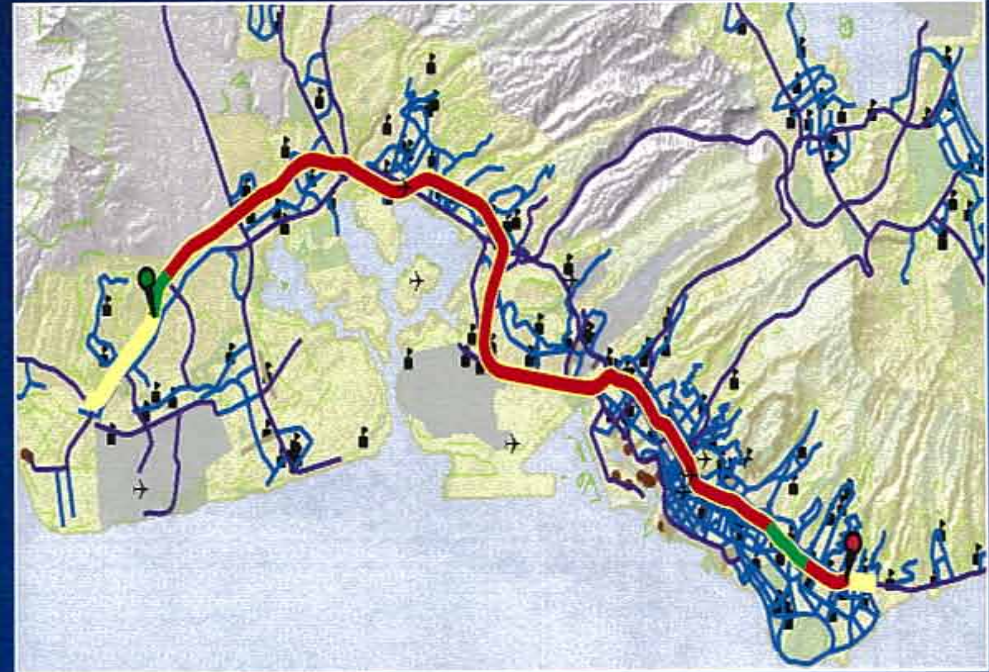
Phase 1

State Harbor Access Road



H-1 CONCRETE PRESERVATION

IN-PROGRESS



DESCRIPTION

Reinforces concrete pavement joints by installing 18-inch-long, 1 1/2-inch-thick steel dowel rods to withstand constant weight & force of traffic.

CONSTRUCTION COST

\$5.64 Million
(100% Federal ARRA Funding)

EST. SCHEDULE

Completion: November 2011



Upcoming Highway Improvements Projects

H-201 MOANALUA FREEWAY RESURFACING

IN-PROGRESS





H-201 Moanalua Freeway Resurfacing PROJECT LIMITS



**H-201
MOANALUA
FREEWAY
ON-RAMP**

**H-1 FREEWAY
UNDERPASS**



H-201 Moanalua Freeway Resurfacing **PROGRESS UPDATE**

Estimated Cost	\$4 Million
Current Status	Design Phase
Anticipated Notice-To-Proceed	Summer 2011
Anticipated Completion	Early 2012 (7-9 months construction time)



Highways Division

511 ADVANCED TRAVELER INFO SYSTEM

IN-PROGRESS





511 Advanced Traveler Information System GOAKAMAI.ORG WEBSITE

COMPLETED

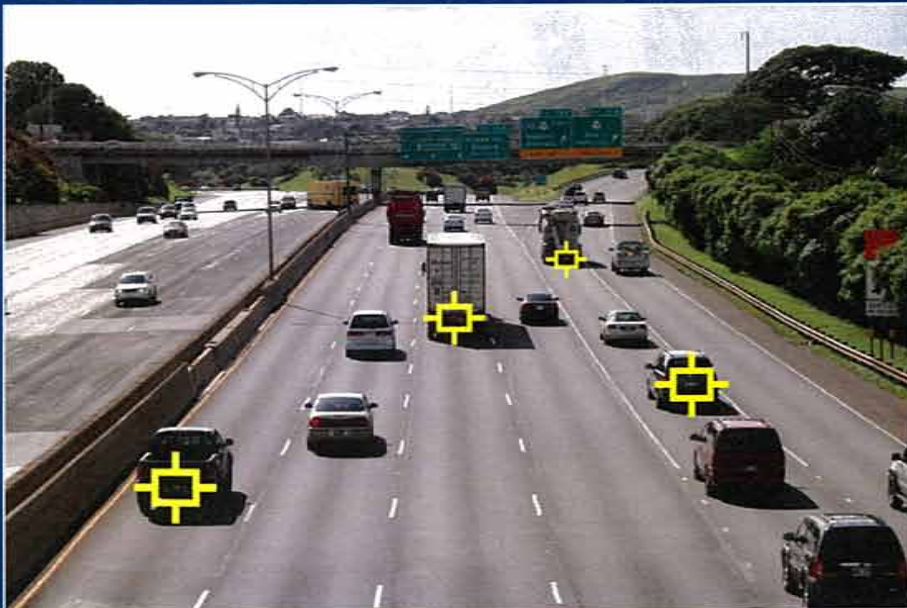
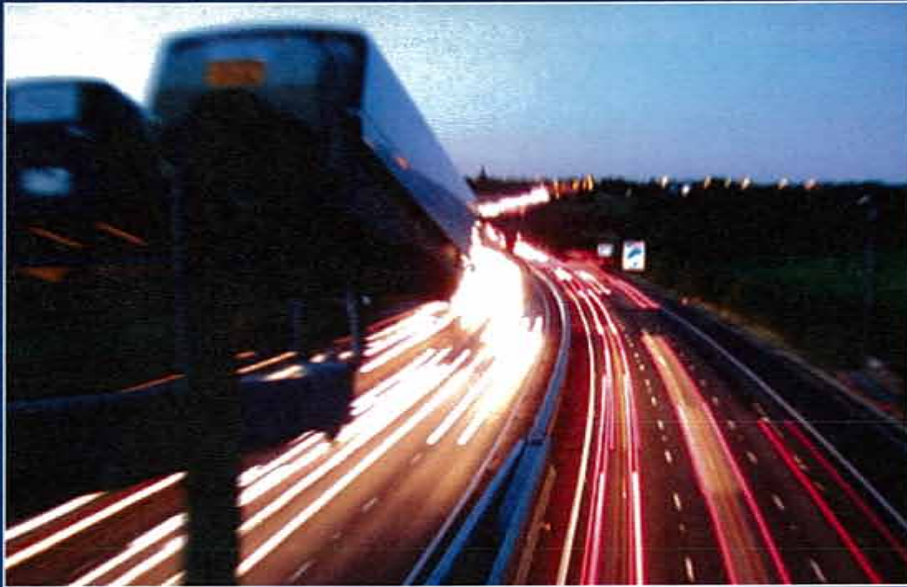
- Launched August 2010
- Provides 24/7 traffic congestion info for Oahu freeways
- Uses 73 doppler radar stations for real-time traffic flow data
- Links over 200 traffic cameras for on-site snapshots
- Connects to bus transit, carpooling, roadwork, Freeway Service Patrol & other resources



511 Advanced Traveler Information System

TRAVEL TIME GENERATION SYSTEM

IN-PROGRESS



- Installation of 48 freeway traffic speed-monitoring cameras in-progress
- Uses digital cameras to track random vehicle license plates
- Rear license plate info is truncated, encrypted, calculated & deleted, no data is stored
- Provides accurate travel times between given points
- Similar systems used across US



511 Advanced Traveler Information System

511 PHONE HOTLINE, HIGHWAY SIGNS

IN-PROGRESS



Traffic, Travel and Transit Info

- 511 automated phone system
- Highway electronic messageboards
- Gives motorists real-time traffic info via phone, internet & signs
- Info will also be used by TV newscasts & radio traffic reports
- Anticipated completion Summer 2012

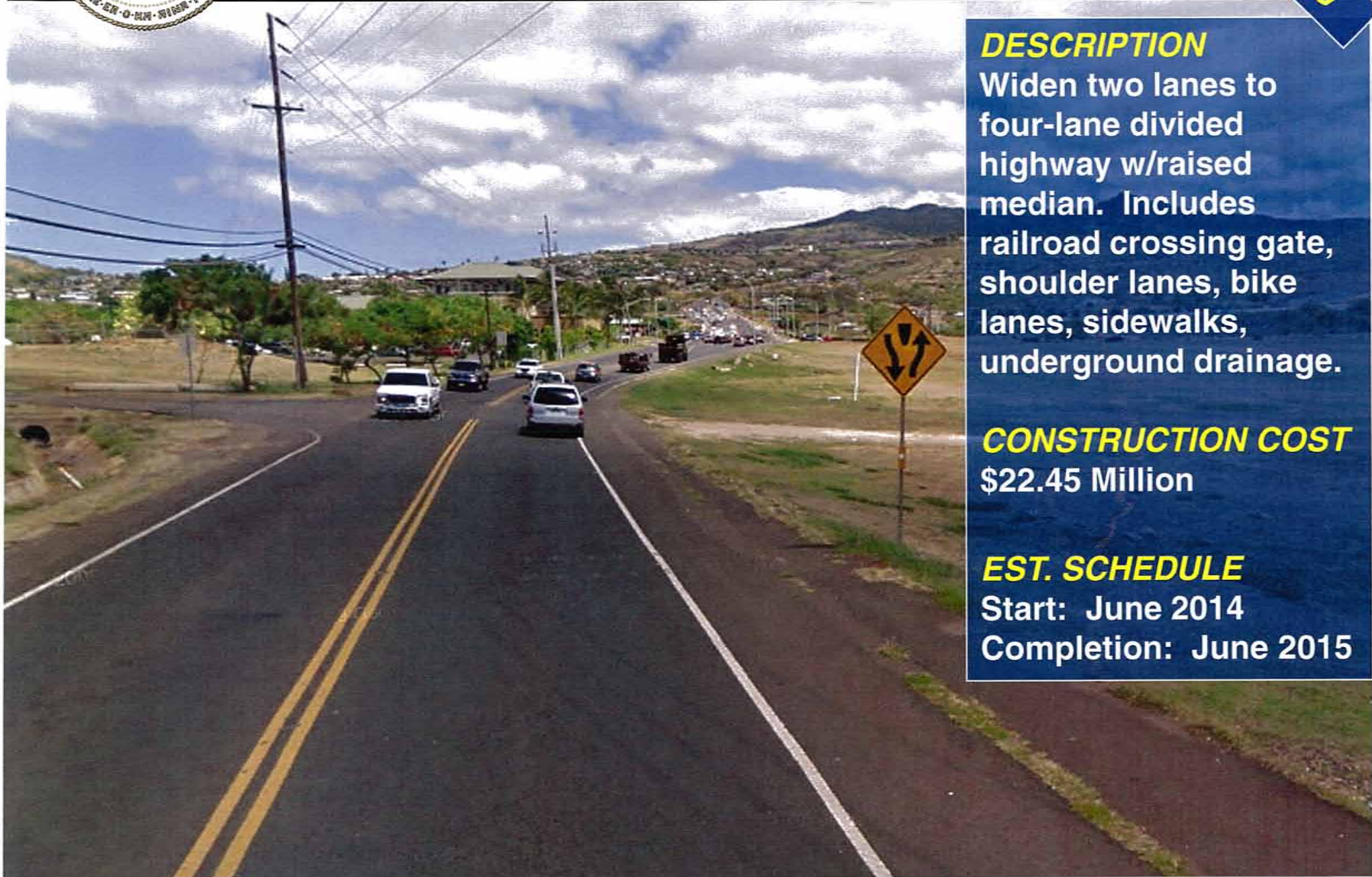


** Artist's Rendition:
Design elements are subject to change.*



FORT BARRETTE ROAD WIDENING

UPCOMING



DESCRIPTION

Widen two lanes to four-lane divided highway w/raised median. Includes railroad crossing gate, shoulder lanes, bike lanes, sidewalks, underground drainage.

CONSTRUCTION COST

\$22.45 Million

EST. SCHEDULE

Start: June 2014

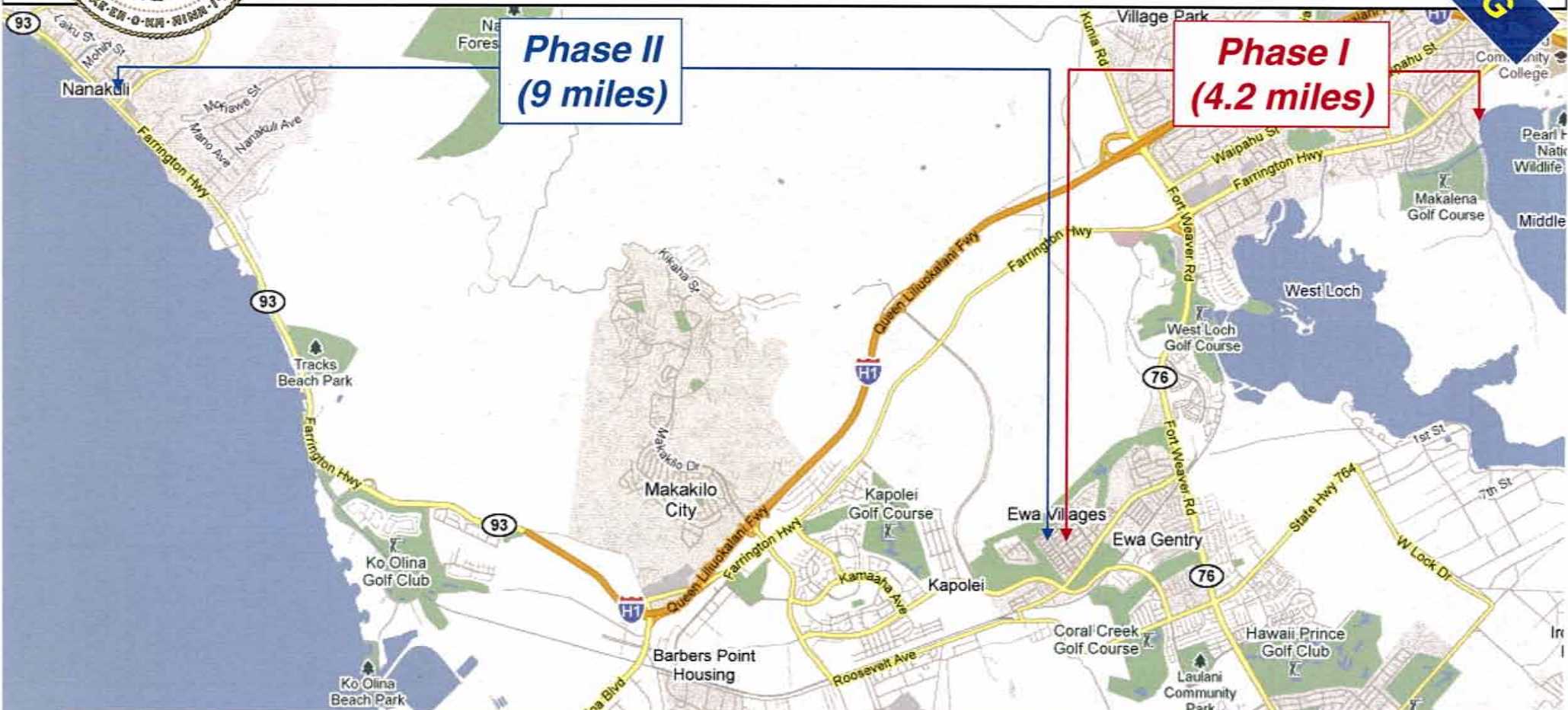
Completion: June 2015



Highways Division

LEEWARD BIKEWAY, PHASES I & II

UPCOMING



**Phase II
(9 miles)**

**Phase I
(4.2 miles)**

DESCRIPTION

Construct 10-ft.-wide asphalt concrete bike path w/2-ft. shoulders, bridges & culverts. Design follows existing bikeway, railway paths over 13.2 miles.

CONSTRUCTION COST

\$3.6 Million

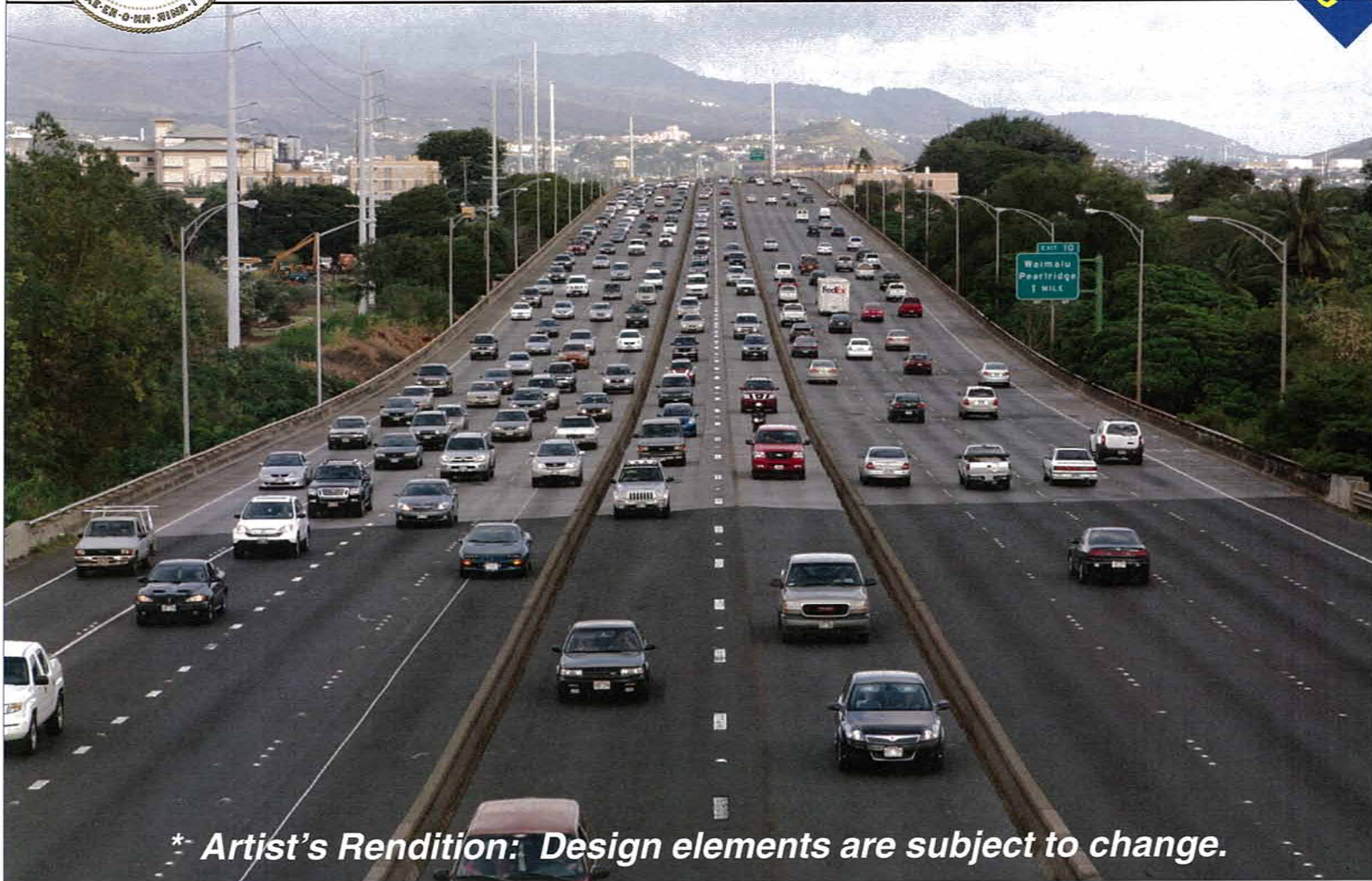
EST. PHASE I SCHEDULE (PHASE II TBD)

Start: April 2012 Completion: April 2013



H-1 FREEWAY PM CONTRAFLOW

UPCOMING



** Artist's Rendition: Design elements are subject to change.*



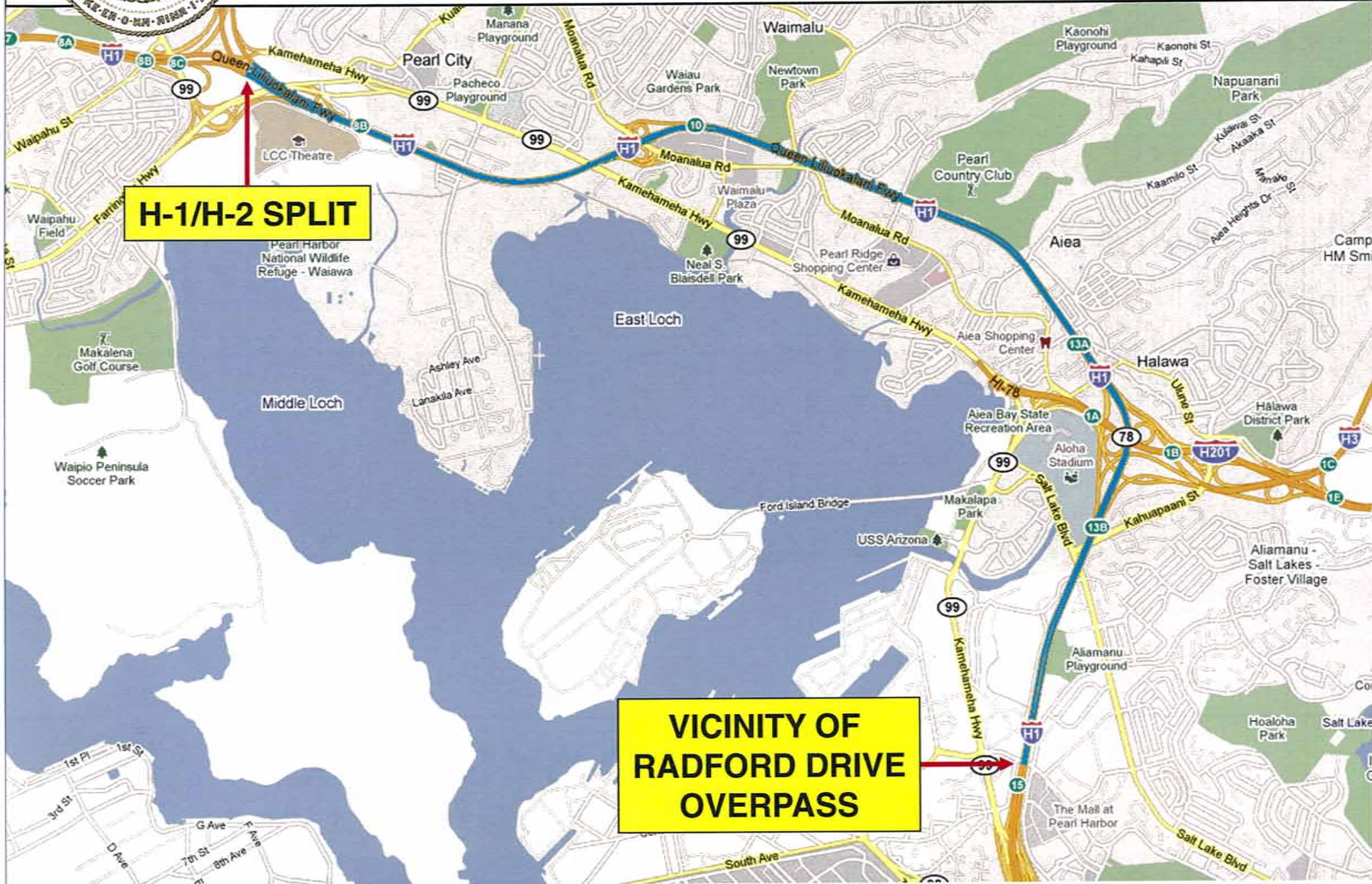
H-1 Freeway PM Contraflow **CURRENT CONDITIONS**



- 3 to 7 westbound lanes, with 3 continuous thru lanes
- Regularly congested in PM peak period
- Peak period = 40,000+ vehicles per day
- Delay time = 10 to 20 minutes per vehicle per day



H-1 Freeway PM Contraflow PROJECT LIMITS



H-1/H-2 SPLIT

**VICINITY OF
RADFORD DRIVE
OVERPASS**



H-1 Freeway PM Contraflow

EXISTING AM CONFIGURATION





H-1 Freeway PM Contraflow

DESIGN CONCEPT #1 (With Median Barrier)

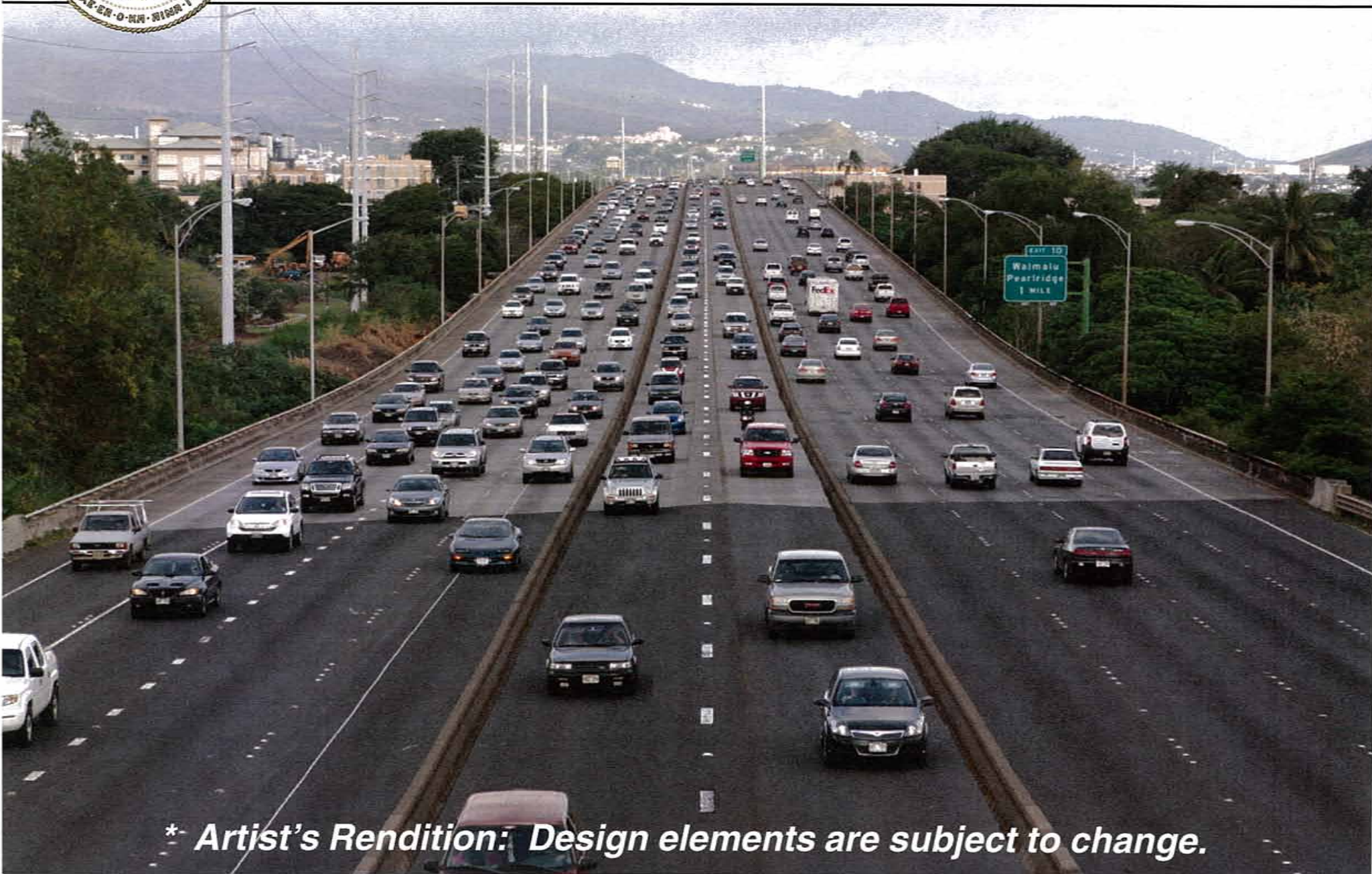


** Artist's Rendition: Design elements are subject to change.*



H-1 Freeway PM Contraflow

DESIGN CONCEPT #2 (No Median Barrier)



** Artist's Rendition: Design elements are subject to change.*



H-1 Freeway PM Contraflow **PROGRESS UPDATE**

Estimated Cost	\$75 Million (Not including maintenance)
Advertisement	December 2009
Award & Notice-To-Proceed	June 2010
Current Status	DELAYED DUE TO CONTRACT PROTEST
Anticipated Completion	Originally early 2012 (TBD following protest resolution)



H-1 PEARL CITY VIADUCT REPAIRS

UPCOMING

DESCRIPTION

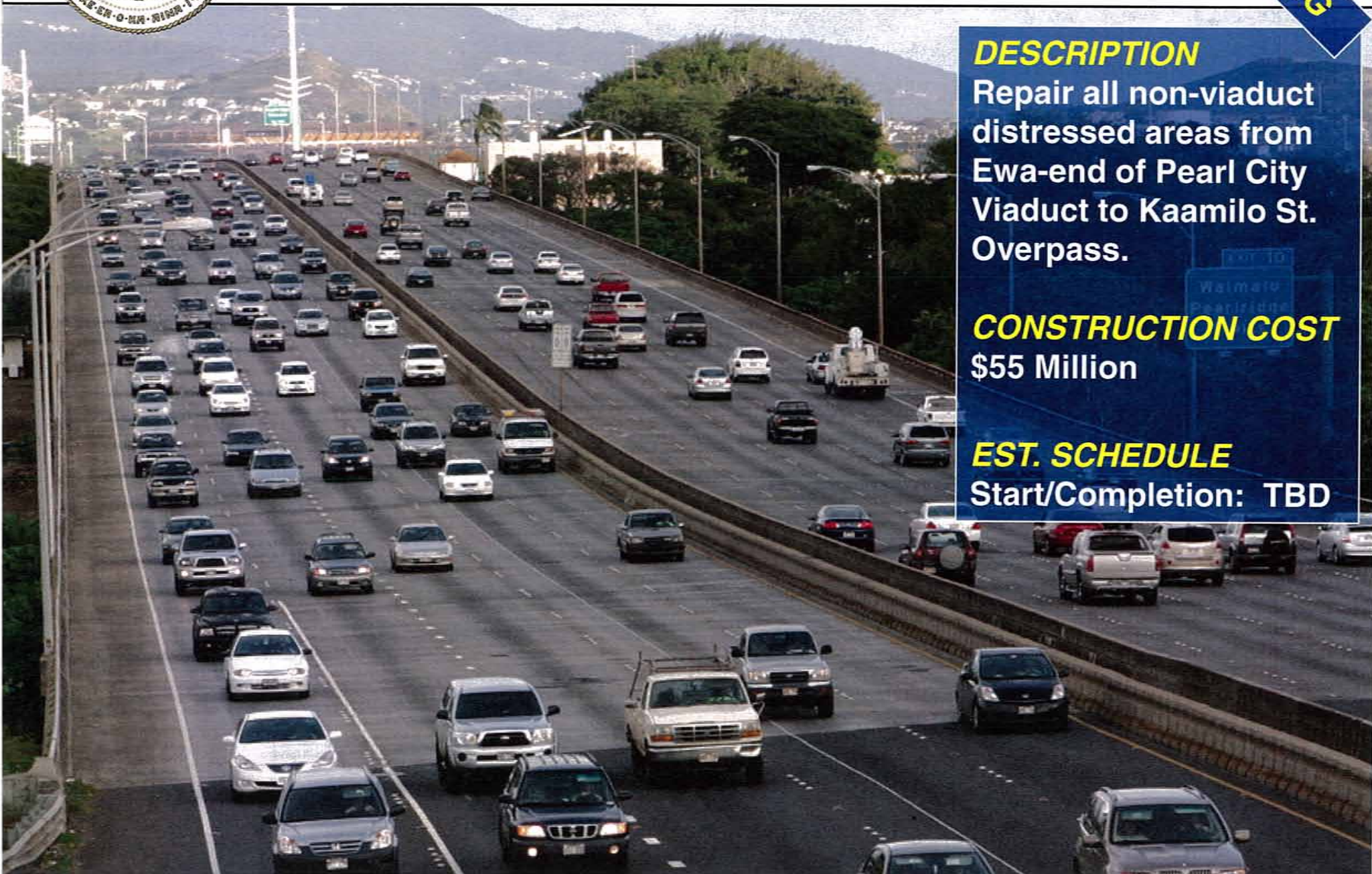
Repair all non-viaduct distressed areas from Ewa-end of Pearl City Viaduct to Kaamilo St. Overpass.

CONSTRUCTION COST

\$55 Million

EST. SCHEDULE

Start/Completion: TBD





H-1 WAIMALU VIADUCT REPAIR

UPCOMING

DESCRIPTION

Emergency repairs completed Aug. 2009.

Phase I of new repairs to be included in PM Contraflow project.

Phase II costs & dates TBD following PM Contraflow project.





Highways Division

H-1 AIRPORT VIADUCT DECK REPAIRS

UPCOMING

DESCRIPTION

Phase I repairs completed Dec. 2009. Deck surveys on-going to identify additional areas for repair. Currently locating funding for Phase II.

CONSTRUCTION COST

\$8 Million

EST. SCHEDULE

Start/Completion: TBD





Highways Division

H-1 MIDDLE STREET MERGE WIDENING

UPCOMING





H-1 Middle Street Merge Widening **CURRENT CONDITIONS**



- Worst bottleneck in the state
- Congested since the 70s
 - Studies in 80s, 90s, and 2000s
- Delays heavy in AM and PM
 - 2 minutes non-peak travel time
 - 20 to 45 minutes peak travel time
- Delays during non-peak times
 - Lunch hour
 - Weekends



H-1 Middle Street Merge Widening PROJECT LIMITS





H-1 Middle Street Merge Widening

GULICK AVE. OVERPASS (BEFORE)





H-1 Middle Street Merge Widening

GULICK AVE. OVERPASS (AFTER*)



** Artist's Rendition: Design elements are subject to change.*



H-1 Middle Street Merge Widening

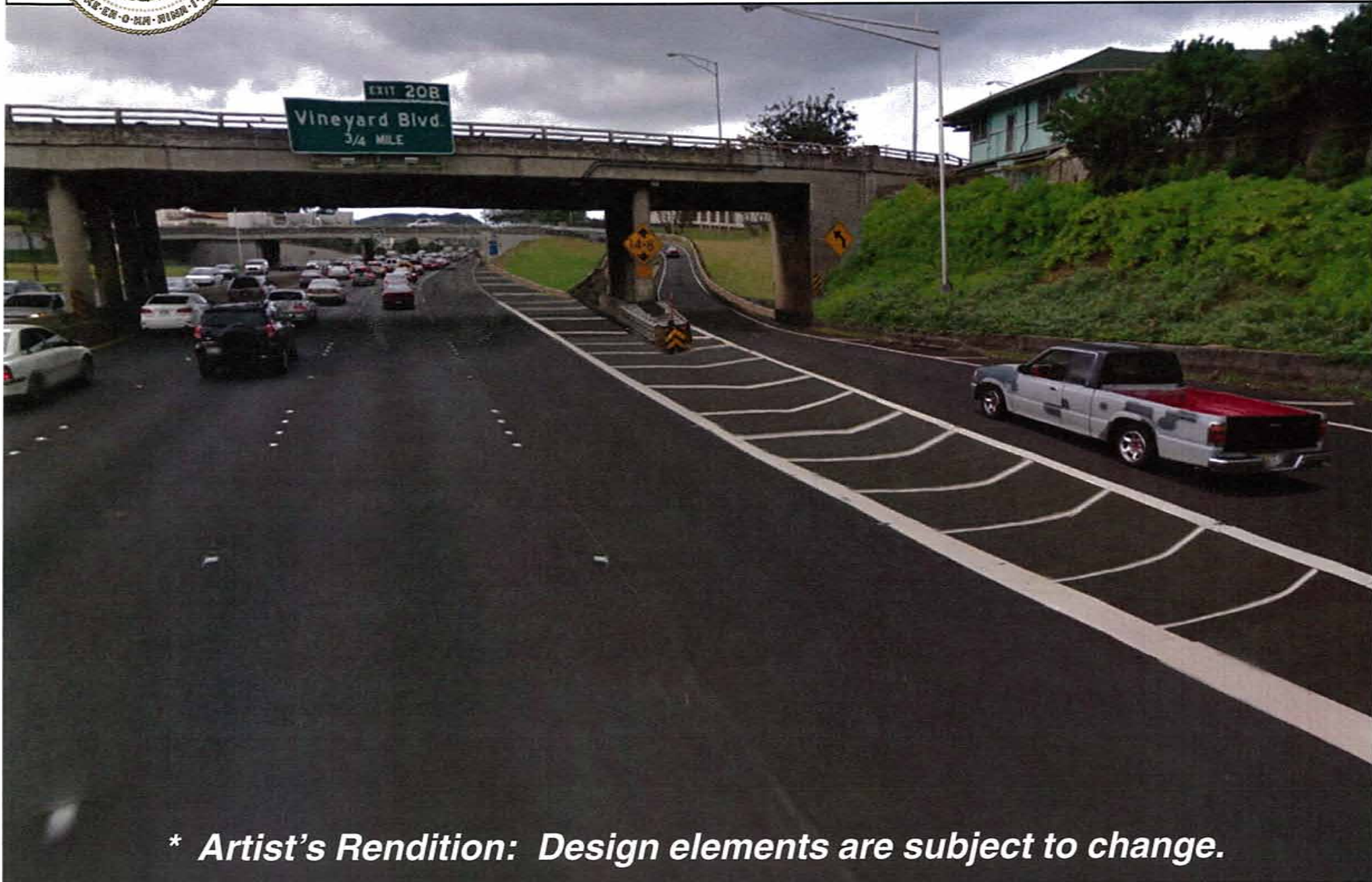
KALIHI ST. OVERPASS #3 (BEFORE)





H-1 Middle Street Merge Widening

KALIHI ST. OVERPASS #3 (AFTER*)



** Artist's Rendition: Design elements are subject to change.*



H-1 Middle Street Merge Widening

KALIHI ST. OVERPASS #1 (BEFORE)





H-1 Middle Street Merge Widening

KALIHI ST. OVERPASS #1 (AFTER*)



** Artist's Rendition: Design elements are subject to change.*

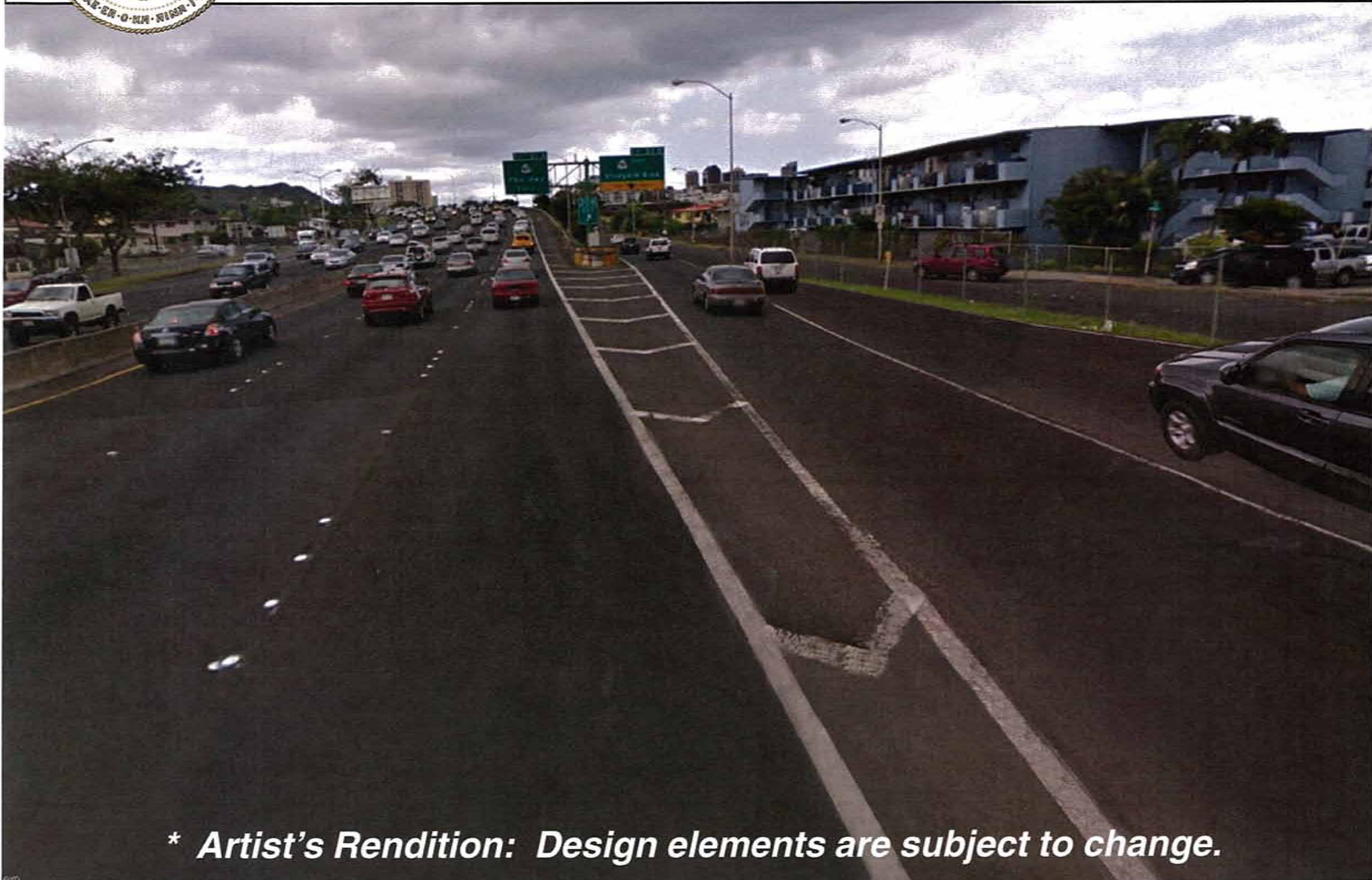


H-1 Middle Street Merge Widening **VINEYARD BLVD. EXIT (BEFORE)**





H-1 Middle Street Merge Widening **VINEYARD BLVD. EXIT (AFTER*)**



** Artist's Rendition: Design elements are subject to change.*



H-1 Middle Street Merge Widening **PROGRESS UPDATE**

Estimated Cost	\$100 Million (Full widening concept)
Advertisement	Sept. 2012
Award	Late 2012
Notice-To-Proceed	Late 2012
Anticipated Completion	Late 2014 – Early 2015

NEW DAY IN HAWAII

MAHALO AND ALOHA

DEPARTMENT OF TRANSPORTATION



