



SARS-CoV-2 Testing

CHRONOLOGY

February 29 (Day 1) – First KP member tested by DOH for SARS-CoV-2

March 5 (Day 6) – First KP member tested positive for SARS-CoV-2 (First positive case in the State of Hawaii)

March 16 (Day 17) – Testing moved fully to commercial labs (Quest Diagnostics) from DOH

March 20 (Day 21) – GenMark ePlex launched

March 24 (Day 25) – First patient to be tested at KP

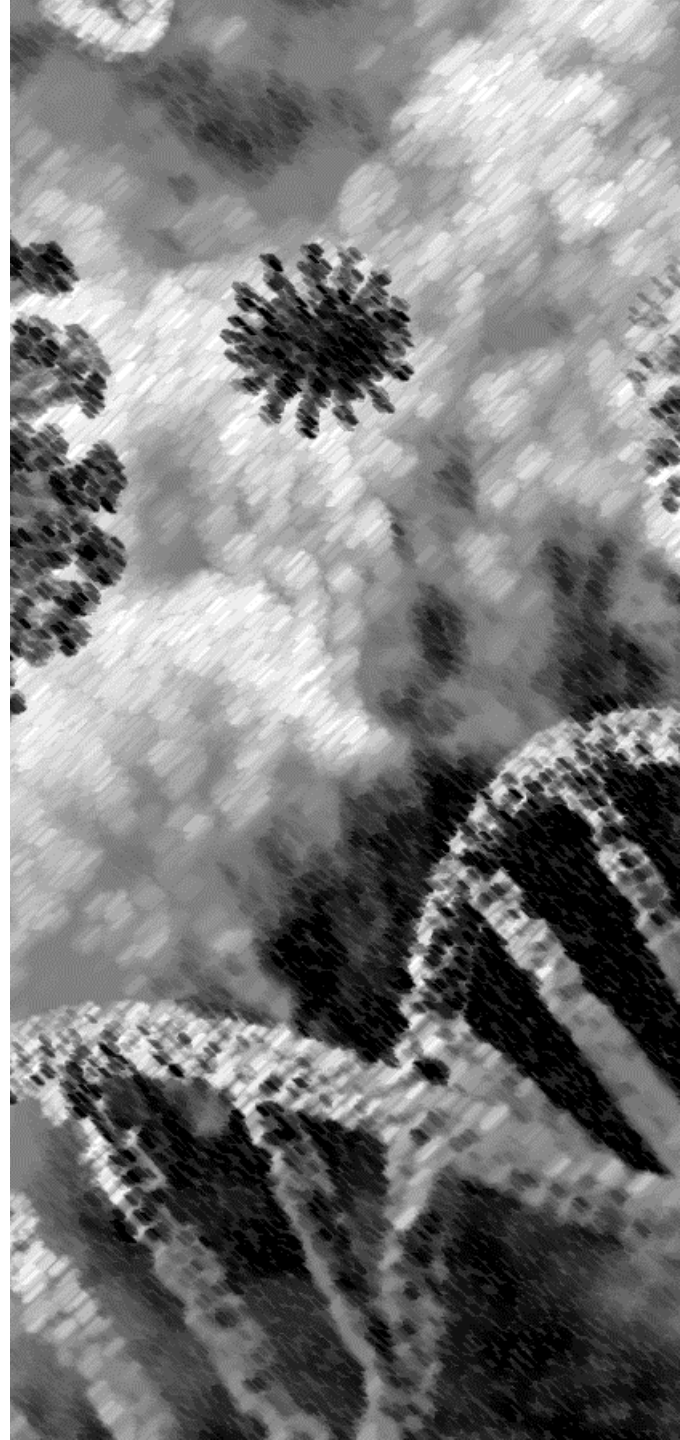
March 28 (Day 29) – First positive patient tested at KP

April 20 (Day 52) – Cepheid GeneXpert IV launched

April 20 (Day 52) – Second GenMark ePlex launched

May 12 (Day 74) – Cepheid GeneXpert XVI launched

June 3 (Day 97) – Hologic Panther launched



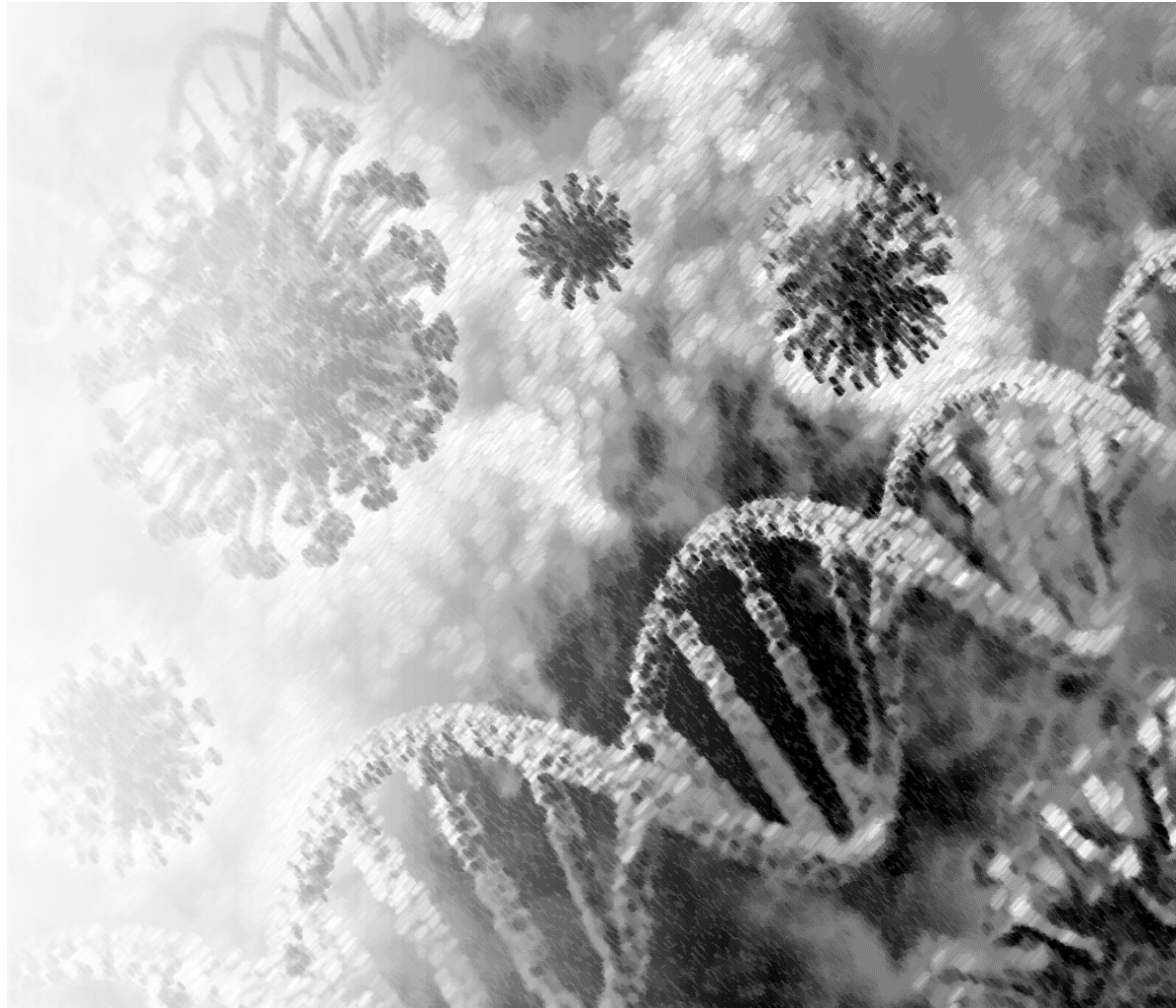


OVERVIEW

**June 18 – 6,844 SARS-CoV-2
tested to date**

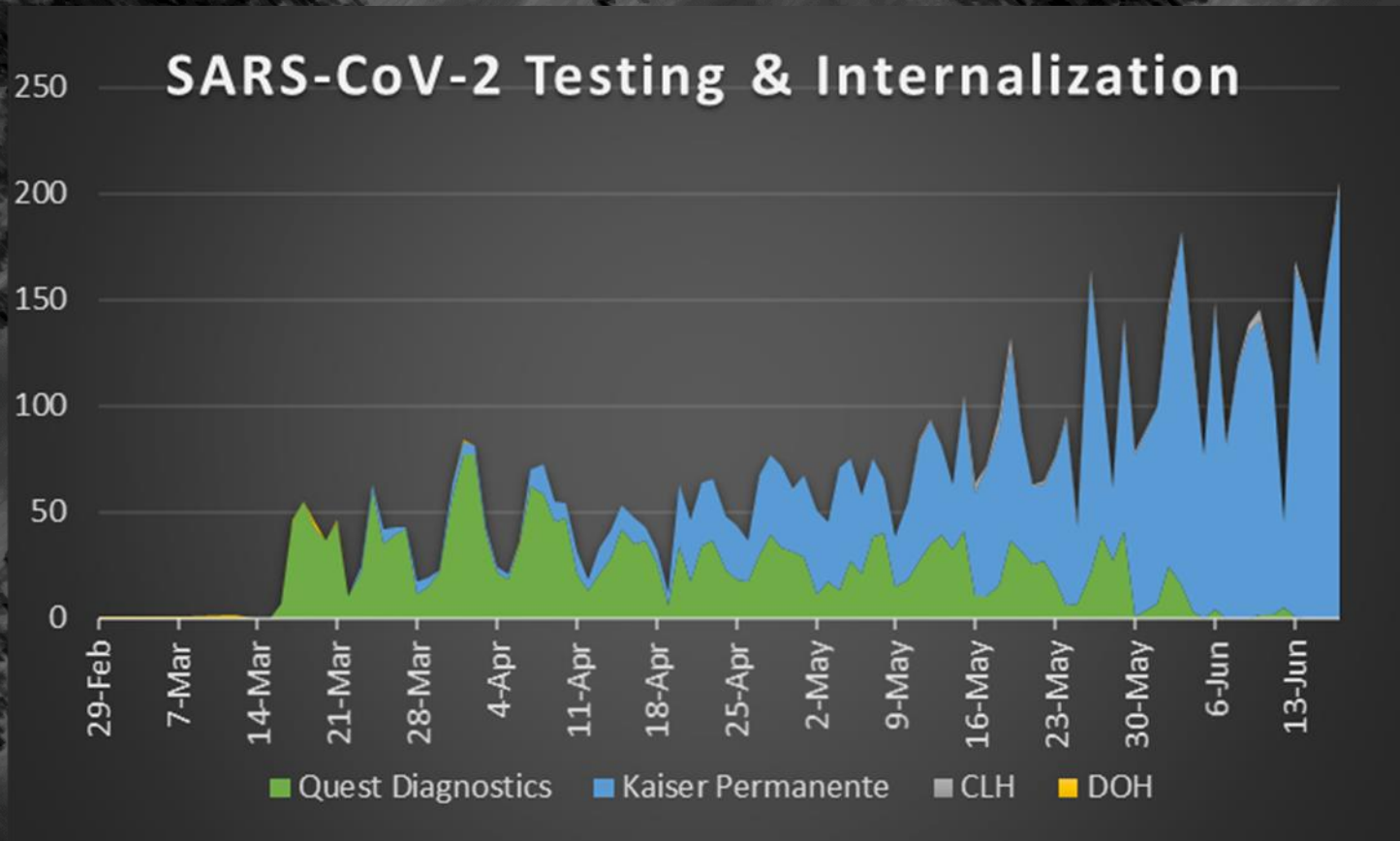
**64.2% of the total tests
performed at KP Moanalua
Medical Center**

Positivity rate 1.17%



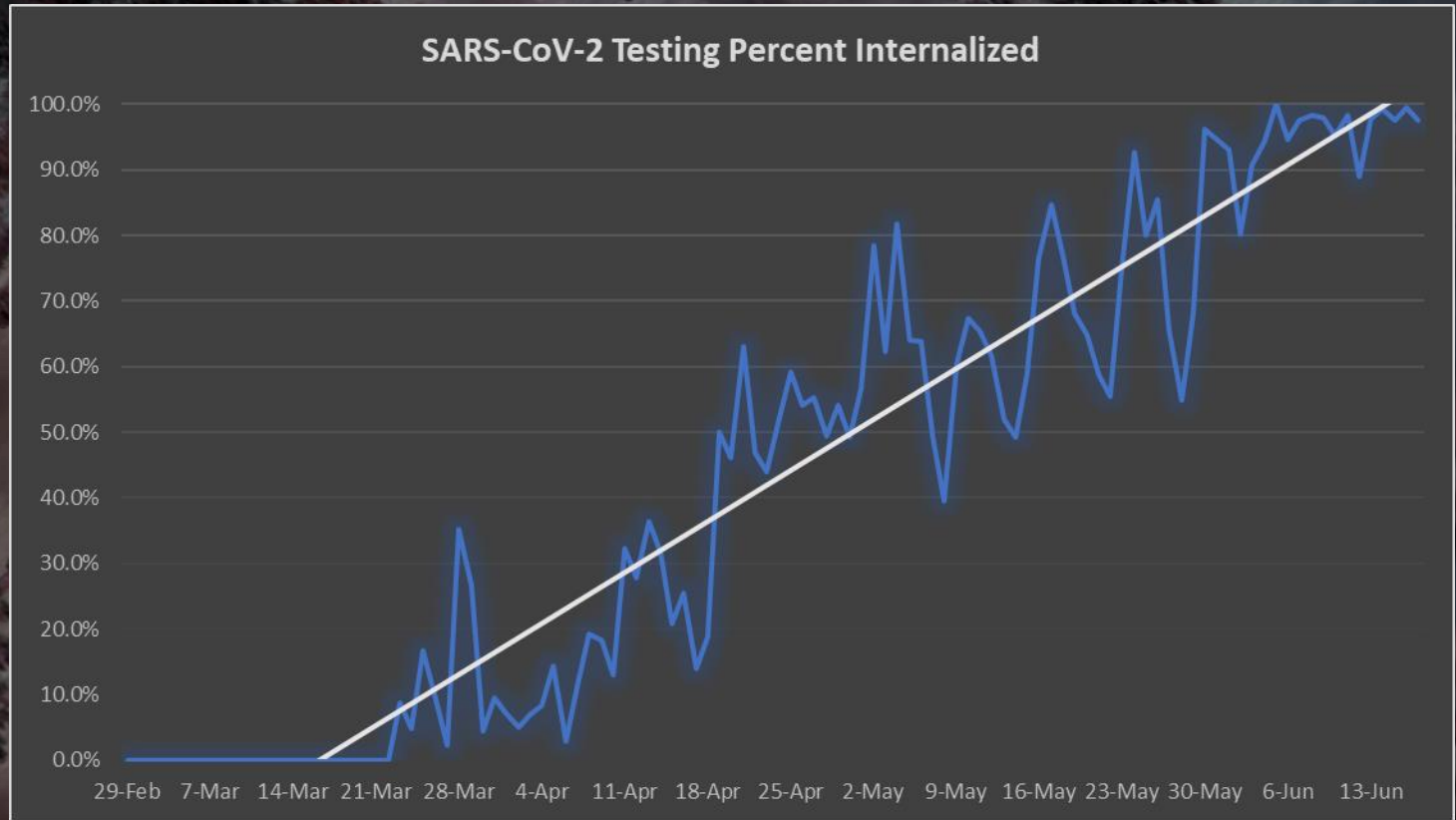


Testing Distribution Ratio





Testing Internalization Percent



TESTING EQUIPMENT THEORETICAL CAPACITY

GenMark ePlex (2 units) - 288 tests per day

Cepheid GeneXpert IV – 96 tests per day

Cepheid GeneXpert XVI – 384 tests per day

Hologic Panther – 1,000 tests per day

TOTAL – 1,768 tests per day

Theoretical Capacity Analysis

