



## Application Submittal Checklist

*The following items are required for submittal of the grant application. Please verify and check off that the items have been included in the application packet.*

- ✓ 1) Certificate of Good Standing (If the Applicant is an Organization)
- ✓ 2) Declaration Statement
- ✓ 3) Verify that grant shall be used for a public purpose
- ✓ 4) Background and Summary
- ✓ 5) Service Summary and Outcomes
- ✓ 6) Budget
  - a) Budget request by source of funds ([Link](#))
  - b) Personnel salaries and wages ([Link](#))
  - c) Equipment and motor vehicles ([Link](#))
  - d) Capital project details ([Link](#))
  - e) Government contracts, grants, and grants in aid ([Link](#))
- ✓ 7) Experience and Capability
- ✓ 8) Personnel: Project Organization and Staffing

*Ariana C. Whalen*

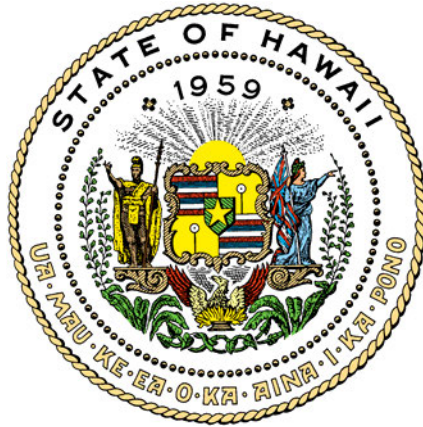
Ariana Whalen,  
Director of Communications & Fundraising

1/21/2022

AUTHORIZED SIGNATURE

PRINT NAME AND TITLE

DATE



## Department of Commerce and Consumer Affairs

### CERTIFICATE OF GOOD STANDING

I, the undersigned Director of Commerce and Consumer Affairs of the State of Hawaii, do hereby certify that

RE-USE HAWAI'I

was incorporated under the laws of Hawaii on 10/10/2006 ; that it is an existing nonprofit corporation; and that, as far as the records of this Department reveal, has complied with all of the provisions of the Hawaii Nonprofit Corporations Act, regulating domestic nonprofit corporations.

IN WITNESS WHEREOF, I have hereunto set my hand and affixed the seal of the Department of Commerce and Consumer Affairs, at Honolulu, Hawaii.

Dated: December 22, 2021

Director of Commerce and Consumer Affairs

**DECLARATION STATEMENT OF  
APPLICANTS FOR GRANTS PURSUANT TO  
CHAPTER 42F, HAWAI'I REVISED STATUTES**

The undersigned authorized representative of the applicant certifies the following:

The applicant meets and will comply with all of the following standards for the award of grants pursuant to Section 42F-103, Hawai'i Revised Statutes:

Is licensed or accredited, in accordance with federal, state, or county statutes, rules, or ordinances, to conduct the activities or provide the services for which a grant is awarded;

Complies with all applicable federal and state laws prohibiting discrimination against any person on the basis of race, color, national origin, religion, creed, sex, age, sexual orientation, or disability;

Agrees not to use state funds for entertainment or lobbying activities; and

Allows the state agency to which funds for the grant were appropriated for expenditure, legislative committees and their staff, and the auditor full access to their records, reports, files, and other related documents and information for purposes of monitoring, measuring the effectiveness, and ensuring the proper expenditure of the grant.

If the applicant is an organization, the applicant meets the following requirements pursuant to Section 42F-103, Hawai'i Revised Statutes:

Is incorporated under the laws of the State; and

Has bylaws or policies that describe the manner in which the activities or services for which a grant is awarded shall be conducted or provided.

If the applicant is a non-profit organization, it meets the following requirements pursuant to Section 42F-103, Hawai'i Revised Statutes:

Is determined and designated to be a non-profit organization by the Internal Revenue Service; and

Has a governing board whose members have no material conflict of interest and serve without compensation.

Pursuant to Section 42F-103, Hawai'i Revised Statutes, for grants used for the acquisition of land, when the organization discontinues the activities or services on the land acquired for which the grant was awarded and disposes of the land in fee simple or by lease, the organization shall negotiate with the expending agency for a lump sum or installment repayment to the State of the amount of the grant used for the acquisition of the land.

Further, the undersigned authorized representative certifies that this statement is true and correct to the best of the applicant's knowledge.

Re-use Hawai'i  
\_\_\_\_\_  
(Typed Name of Individual or Organization)

*Ariana C. Whalen* \_\_\_\_\_ 1/21/2022 \_\_\_\_\_  
(Signature) (Date)

\_\_\_\_\_  
Ariana C. Whalen, Director of Communications and Fundraising  
(Typed Name) (Title)

\_\_\_\_\_

## Application for Grants

*If any item is not applicable to the request, the applicant should enter "not applicable".*

### **I. Certification – Please attach immediately after cover page**

#### **1. Certificate of Good Standing (If the Applicant is an Organization)**

If the applicant is an organization, the applicant shall submit one (1) copy of a certificate of good standing from the Director of Commerce and Consumer Affairs that is dated no earlier than December 1, 2021.

#### **2. Declaration Statement**

The applicant shall submit a declaration statement affirming its compliance with [Section 42F-103, Hawaii Revised Statutes](#).

#### **3. Public Purpose**

The applicant shall specify whether the grant will be used for a public purpose pursuant to [Section 42F-102, Hawaii Revised Statutes](#).

This grant will be used for the public purpose of waste diversion and creating a more sustainable future, in alignment with Section 42-F-102, Hawaii Revised Statutes.

### **II. Background and Summary**

This section shall clearly and concisely summarize and highlight the contents of the request in such a way as to provide the State Legislature with a broad understanding of the request. Please include the following:

1. A brief description of the applicant's background;  
Re-use Hawai'i is an environmental nonprofit founded in 2006 with a vision to transform wasteful practices and create a thriving and sustainable future for Hawai'i. We accomplish this goal by transforming 'waste' into treasure, protecting the natural environment, and providing the community with affordable resources.

Re-use Hawai'i was formed to divert the number one contributor to landfills - construction and demolition (CandD) waste. Annually, O'ahu alone produces 2.2 million tons of waste (opala.org)! As construction booms, our landfills' lifespans have shortened significantly, and a brighter future requires us to look at our 'waste' as a resource. Re-use Hawai'i diverts hundreds of tons of waste from landfills yearly, reduces greenhouse gas emissions, and provides our community with affordable materials; we accomplish these goals through our two main programs: Deconstruction and Redistribution. Deconstruction is a sustainable alternative to

demolition, where we hand-disassemble buildings to recover material that would otherwise end up in the landfill. Then, all salvaged material is taken to our Redistribution Centers where the community can purchase locally-sourced materials, including reclaimed lumber, building materials, furniture, and more. Over the years, we've added and adjusted programs to fit our community's needs, including community pickups, Workforce Development, and our Local Tree Reclamation program. Through these programs we divert hundreds of tons of waste from landfills, reduce emissions, and cultivate the circular economy in Hawai'i.

**Deconstruction:** The deconstruction program works as an industry participant in the construction industry. We have projects as small as a quick renovation to as large as the deconstruction of the Kona Village in 2018. We work with local contractors, architects, and home-owners to salvage as much material as possible, and provide a tax-deductible donation receipt at the completion of our service. Most recently we identified expanding our Deconstruction Program to include hotel liquidation and salvaging efforts as a major growth opportunity. The expansion of this program has the potential to divert thousands of tons of material from the landfill, provide our community with high quality resources, and will help preserve and improve existing natural resources. This expansion mitigates the environmental cost of tourism, while providing the community with affordable, high-quality goods that lowers both their carbon footprint and the cost of living (when compared with the average cost of building materials and furniture on island).

Innovation in our program increases the sustainability of our community, especially one like ours that is so uniquely tied into the tourism industry. Hotel salvaging projects offer a sustainable alternative to the waste generated from traditional hotel renovations. Re-use Hawai'i's ongoing giveback campaign states that we will give away as much material as possible from these projects to local nonprofits, and other local organizations we've identified as community partners. Hotels that choose our services get a tax-deductible donation receipt to offset renovation costs, the option to work with us on our giveback campaigns, and can rest easily knowing their choice contributes to a more sustainable future for Hawai'i. We're committed to excellence in all of our programs, and with over fifteen years of experience, we are proud to say we're the local experts in Deconstruction and Salvaging projects.

**Redistribution:** Re-use Hawai'i has two Redistribution Centers: the founding Center in Honolulu and a Kailua-Kona Yard formed in 2018. Our Redistribution Centers are a crucial part of developing the circular economy in Hawai'i where we design out waste by keeping materials and goods circulating through our local economy. This process allows us to divert thousands of tons of valuable material from our landfills, and is a crucial part of transforming what was once viewed as waste into treasure. Community members say the Redistribution Centers have lowered their cost of living, and opened their eyes to the possibilities of reusing materials.

Our Redistribution Centers' inventory is supplied from the Deconstruction Program, community-wide donations, and our hotel renovation projects. Within our Kaka'ako location, community members can find building materials, furniture, the nonprofit Honolulu Tool Library, and many other gems. Our Kailua-Kona location is an open yard with various building materials available for purchase. While Re-use Hawai'i develops a robust Hawai'i Island presence, we're working with local organizations and lawmakers to further develop waste diversion programs there. All donations that come through the Centers are methodically weighed and recorded, so

Re-use Hawai'i can tally the volume of materials diverted from landfills. Keeping materials circulating throughout the economy reduces greenhouse gas emissions and the amount of lumber salvaged is put into a formula to calculate that reduction.

**Workforce Development:** Over time, leadership observed the community's need for diverse skill training with an emphasis on sustainability. So, we've designed a workforce development program that offers our community sustainable jobs with an emphasis on deconstruction, conservation, and woodworking. As the landfill issue in Hawai'i continues to grow, the need for deconstruction participants with a carefully trained eye for conservation becomes increasingly important. We've partnered with Kupu and YouthBuild to better develop these programs, and a second round of Kupu participants starts this Spring. Participants in the program range from volunteers to full-time employees. The program has been adapted to fit the needs of the community, including hiring community members who are otherwise turned away from jobs. Re-use Hawai'i is proud to work with and train people of all abilities, backgrounds, and ages, and we're so grateful for the trust our community has placed in us.

**Community Pickups:** Re-use Hawai'i picks up donations at no cost from community members that do not have a way to bring their items to the Redistribution Center. This helps reduce the overall load on landfills and allows us to expand our waste diversion programs to communities throughout the island.

**KVIBE:** Re-use Hawai'i supports KVIBE, a Kookaa Kalihi Valley mentorship program, that teaches the at-risk youth of Kalihi bike mechanic skills. Re-use Hawai'i distributes the bikes at its Redistribution Center and all proceeds are given to the KVIBE program.

**Local Tree Reclamation:** The Local Tree Reclamation Project was formed to divert hundreds of trees from entering the landfills and to create a local resource for our community. Annually, a large volume of trees are felled to make way for construction or because of their disruptive root systems. We've purchased a portable saw and with the assistance of Hunt Development, we've secured a place in Kalaeloa. The demand for locally sourced slabs is higher than the supply in Hawai'i and the import of wood slabs comes with a high carbon price, so we're proud to offer our community sustainably sourced slabs.

## 2. The goals and objectives related to the request;

Re-use Hawai'i is requesting funding to maintain its current operational capacity on O'ahu and Hawai'i Island, as well as to support our Workforce Development Program. These programs allow the organization to maximize its waste diversion efforts, while providing sustainable job skills for a segment of the community that is in need of support. Re-use Hawai'i's services are increasingly in demand as the waste crisis in Hawai'i reaches a critical tipping point. Aligning the goals and outcomes of this request with the state-wide need for waste reduction is crucial as the population expands, construction booms, and an unsustainable amount of waste is generated.

While the structure of this nonprofit is unique in Hawai'i, it represents a growing industry elsewhere. The objectives reflect where we have the largest opportunity to make a positive impact for our community. We know that we cannot divert all of the construction and demolition waste in Hawai'i on our own. So our success also depends on other businesses and organizations seeing the value in reclaimed and salvaged materials. Promoting this shift in the

business and design world will happen through expansive community outreach and through collaborations with local businesses and artists.

Support will help propel our operation forward, allowing us to divert more waste, redistribute more materials, and further reduce GHG emissions. We're proud of the positive impact our work has had on the community, and grateful to continue serving them.

**Objective 1: Annually divert a minimum of 540 tons of material from the landfills between the Deconstruction and Redistribution programs.** This will be accomplished by dismantling structures, accepting community wide donations, and redistributing the material amongst the community. As the need for waste reduction increases, the actual and perceived value the programs add to the community noticeably increases.

**Objective 2:** Annually reduce an estimated 360 tons of greenhouse gas emissions (GHG). When virgin materials are used, GHG emissions are released into the atmosphere, further contributing to global climate change. Our island community is extremely vulnerable to sea-level rise, and we should do all that we can to mitigate the effects of climate change.

**Objective 3:** Serve approximately 21,600 community members through our Redistribution Centers and train 32 Workforce Development participants. This activity will support sustainable improvements in our local communities, as our work contributes to a circular economy where we are less reliant on imports, and therefore more resilient to climate change and less fiscally vulnerable to global market shifts. Re-use Hawai'i proudly serves a wide array of community members at the Redistribution Center, and mindfully keeps prices low, so the community reaps the fiscal benefits of reuse. The two main programs work in tandem; the Deconstruction program feeds the Redistribution Center's appetite for salvaged material, and the revenue generated from both allows this crucial work to continue. Additionally, the Workforce Development Program supports the need for more sustainable jobs, and will continue to expand the number of participants served per year.

### 3. The public purpose and need to be served;

The Hawaiian Islands are one of the most geographically isolated places on earth, and that isolation comes with significant barriers to achieving environmental sustainability; we are more reliant on imports, have limited natural resources, and are more vulnerable to shifts in the global market. Our economic development is largely dependent on tourism, but maintaining tourism comes with steep infrastructure costs. We depend almost entirely on imports to support our growing consumption needs. These imports come at a high cost to our pocketbooks and to our environment; notably, the Department of Housing and Urban Development reports that the median household income for a family of four in Hawai'i is barely above the poverty line. The most recent The Council for Community and Economic Research survey shows that Hawai'i has the most expensive cost of living in the nation. A score of 100 indicates the national average cost of living, and Hawai'i scored 185.6, nearly double the average cost of living on the mainland. Due to the high-cost of living many lifelong residents of Hawai'i leave their island homes for the mainland.

The amount of waste we currently produce is unsustainable; every year, O'ahu produces 2.2 million tons of waste, and one-third of it is from the construction and demolition industry ([honolulu.gov/opala](http://honolulu.gov/opala)). Our landfills' lifespans have shortened significantly, and a brighter future



requires looking at our waste as a resource. Re-use Hawai'i has been rethinking waste since 2006, and knows that the built environment is full of resources. With each ton of material we divert from landfills, we reclaim the embodied energy it took to make, ship, and acquire the material.

Our work helps protect natural ecosystems through the diversion of materials from the landfill; the material in landfills further contributes to GHG emissions. Furthermore, the leachate in landfills leaks into the ground affecting both soil and groundwater health and negatively impacts Hawai'i's reliance on soil and groundwater. Notably, Hawai'i's domestic water supply is 99% groundwater, and is deeply connected to Hawai'i's Native Resources; groundwater and its filtration through the soil and plants is a crucial part of the ahupua'a system. Our diversion of the largest contributor to landfills, construction and demolition waste, reduces leachate and helps restore a healthy ecosystem balance. Reclaiming the embodied energy of materials reduces Hawai'i's reliance on the mainland for materials which strengthens our community and our ecosystem.

Traditional demolition methods are extremely wasteful with almost 100% of a structure ending up in the PVT landfill. PVT is privately managed and is the only construction and demolition landfill on O'ahu; PVT is located in Nanakuli on the Waianae Coast. It has recently been revealed that the landfill will need to close before the end of this decade due to capacity issues. The Department of ENV is currently looking to site a new landfill to accommodate the construction and demolition waste on O'ahu, and many conversations have rightfully been centered around the fairness of where the next landfill will be. The Leeward Side is historically overlooked when resources are being doled out and overburdened when it comes to the O'ahu's energy and waste needs. In order to reduce the burden on the Leeward Side, and other communities throughout the island, we must reduce the amount of waste created. Shipping our waste off-island is environmentally, culturally, and economically unsustainable; our solution must come from the island itself.

Our island homes are threatened by climate change more so than other geographic locations, and we see firsthand the erosion of our beaches as sea level rises. Waikiki Beach, for example, has been identified as one of the major impact areas. The estimated loss of Waikiki beach will cost O'ahu \$2 billion dollars annually. Shifting temperatures and rainfall patterns that accompany climate change reduce the amount of available freshwater, further increasing our cost of living.

Addressing the root causes of sea-level rise and climate change is crucial for our survival. The lumber industry emits approximately 500 million tons of CO<sub>2</sub> per year. Diverting lumber and other wood products from landfills could reduce global CO<sub>2</sub> emissions by 135 million tons annually. The transportation of this material is another major source of greenhouse gas (GHG) emissions, and our distance from the mainland increases the GHG emission load.

O'ahu receives more than 16 million tons of material from freight shipping each year, and cargo shipping is estimated to account for more than 84% of the global impact of GHG emissions in the transport sector. Hawai'i's contributions to the global GHG emission load must be reduced if we're to protect our island home. Low-income communities are the most impacted by the effects of climate change and are often given few options to adapt. This causes many residents to relocate causing a subsequent loss of culture. Additionally, Hawai'i's workforce requires diversification to address these monumental challenges and to support our residents. The Workforce Development Program was formed to give our community the skills and knowledge to create a more sustainable future for Hawai'i. Our ongoing efforts reduce GHG

emissions by minimizing the need for new material, lowers the cost of building supplies, and reduces the environmental burden of waste.

We have a responsibility to make Hawai'i more affordable for our residents and to protect the environment that supports us. In order to protect and preserve our magnificent island home, we must look at the built environment as a resource, reduce our reliance on imports, lower our cost of living, and take action on protecting our environment.

4. Describe the target population to be served; and

The target population served through our objectives are the residents of the state of Hawai'i. All residents are impacted by the unsustainable practices of the Construction and Demolition industry and the waste that it produces. Providing sustainable alternatives to landfill expansions creates new opportunities for the use of public land. The programs also benefit community members whose health and standard of living are directly impacted by landfills and their growth, which disproportionately impacts residents of low-moderate income. Through the Redistribution program, Reuse Hawai'i serves homeowners, renters, contractors, artists, and others by offering an affordable and local community resource. During Re-use Hawai'i's 15 years of operations, the Deconstruction Program has performed more than 727 deconstruction projects on O'ahu. Over the course of the Redistribution Center's operations, it has distributed more than \$8.5 million worth of recovered building material back into the economy, and into use. These programs combined have diverted more than 11 million pounds of material from the landfill and enhanced the community. Re-use Hawai'i is an established local non-profit organization with an impressive track record of fulfilling our waste diversion goals through building material reuse and recycling. Additionally, we have served more than 40,000 unique community members at our Redistribution Center. To date, we've reduced over 7,989.13 tons of GHG emissions, which is equivalent to eliminating 1,775 cars from the roads for an entire year!

5. Describe the geographic coverage.

Re-use Hawai'i's mission of waste reduction and conservation serves all of Hawai'i. However, the majority of salvaged material is sourced and redistributed on O'ahu followed by our Hawai'i Island operations. We gather the zip codes of our community participants at the point of sale and through deconstruction proposals. Through this data, we have determined that the highest concentrations of our program users come from Honolulu County. We also work with residents of neighboring islands to transport material from the Redistribution Centers, including a recent collaboration with housing disadvantaged communities on Molokai. Re-use Hawai'i performs deconstruction projects on O'ahu, Kaua'i, Maui, and Hawai'i Island. We aim to redistribute the materials from these projects within the communities they were salvaged from, and are continuously adapting our programs and working with local organizations to meet this goal.

### **III. Service Summary and Outcomes**

The Service Summary shall include a detailed discussion of the applicant's approach to the request. The applicant shall clearly and concisely specify the results, outcomes, and measures of effectiveness from this request. The applicant shall:

1. Describe the scope of work, tasks and responsibilities;

The scope of work includes all tasks under the three objectives, as detailed below:

**Objective 1: Annually divert a minimum of 540 tons of material from the landfills between the Deconstruction and Redistribution programs.** Every item we divert from the landfill is weighed as soon as it enters our Redistribution Centers, it is recorded in our database, and the data is shared each month.

**Objective 2: Annually reduce an estimated 360 tons of greenhouse gas emissions (GHG).** Each pound of lumber diverted has a greenhouse gas diversion equivalent. We carefully weigh and calculate this number every month. The salvaged lumber is given the best chance at recirculation through our Redistribution Centers as it is de-nailed and safely prepared in our Processing Department. Our lumber is increasingly in high demand as the cost of lumber has skyrocketed over the past few years.

**Objective 3: Serve approximately 21,600 community members through our Redistribution Centers and train 32 Workforce Development participants.** This objective is fulfilled by measuring the number of community members that make a purchase at our Redistribution Centers and the number of participants in our Workforce Development Program. This number is gathered by our retail software and is analyzed twice a month. This number does not include the number of community members who receive free materials at our Centers.

These objectives will be carried out and managed by the Executive Director, Redistribution Center Manager, Workforce Development Coordinator and the Deconstruction Program Manager. Data will be compiled by the Director of Administration.

2. Provide a projected annual timeline for accomplishing the results or outcomes of the service;

**Objective 1: Annually divert a minimum of 540 tons of material from the landfills between the Deconstruction and Redistribution programs.**

<b>ACTIVITIES:</b>	<b>Q1</b>	<b>Q2</b>	<b>Q3</b>	<b>Q4</b>
Maintain 3 simultaneous crews on O'ahu performing an average of 3 Deconstruction Projects every month	*	*	*	*
Maintain 1 crew on Hawai'i Island performing an average of 1 Deconstruction Project per crew every month	*	*	*	*
Accept and weigh community wide donations of materials through the O'ahu Redistribution Center	*	*	*	*
Conduct community wide pickup programs to help divert hundreds of tons of material	*	*	*	*
Accept community-wide donations of materials through the Hawai'i Island Redistribution Center	*	*	*	*

**Objective 2: Annually reduce an estimated 360 tons of greenhouse gas emissions (GHG).**

<b>ACTIVITIES:</b>	<b>Q1</b>	<b>Q2</b>	<b>Q3</b>	<b>Q4</b>
Denail and safely prepare salvaged lumber in the Processing Department	*	*	*	*
Weigh and calculate the tonnage of lumber diverted from the landfill, then convert into GHG emission reduction	*	*	*	*

**Objective 3: Serve approximately 21,600 community members through our Redistribution Centers and train 32 Workforce Development participants.**

<b>ACTIVITIES:</b>	<b>Q1</b>	<b>Q2</b>	<b>Q3</b>	<b>Q4</b>
Measure the number of community members that make a purchase at both Redistribution Centers	*	*	*	*
Measure the number of participants in our Workforce Development Program	*	*	*	*
Continuously expand community awareness of our programs and offerings on social media	*	*	*	*

3. Describe its quality assurance and evaluation plans for the request. Specify how the applicant plans to monitor, evaluate, and improve their results; and

Leadership will perform ongoing evaluations to provide quality assurance and help to identify strengths and opportunities for growth. The Director of Administration will issue monthly, quarterly, annual and profit and loss statements of the programs to help leadership and the Board of Directors understand and improve financial performance.

Objective 1 methods include monthly project analysis and evaluations, Deconstruction clients will be surveyed at the completion of each project, and we will host bi-weekly leadership meetings to evaluate progress and support needs. We will evaluate and improve their results through project timeframes and safety issues, the number of operating crews, tonnage of diverted material, recycled metal, the status of monthly goals, efficiency of program performance, rate of material disposed vs diverted, and new prospects tracked through customer relationship management tools.

Objective 2 methods include measuring and processing lumber worth 360 tons of GHG emissions. We will evaluate the amount of lumber processed monthly, enter into the approved formula, and generate reports to maintain this goal. We will evaluate and improve their results by addressing safety issues and maintaining the number of Processing Department crew members.

Objective 3 methods include bi-monthly analysis of programs through our “Lightspeed” customer system. We will evaluate and improve on our programs in leadership meetings and through thorough social media marketing campaigns.

4. List the measure(s) of effectiveness that will be reported to the State agency through which grant funds are appropriated (the expending agency). The measure(s) will provide a standard and objective way for the State to assess the program's achievement or accomplishment. Please note that if the level of appropriation differs from the amount included in this application that the measure(s) of effectiveness will need to be updated and transmitted to the expending agency.

The measure of effectiveness for each objective is listed below.

Objective 1: Maintain 3 simultaneous crews on O'ahu performing an average of 3 deconstruction projects per crew every month. Maintain 1 crew on Hawai'i Island performing an average of 1 deconstruction projects per crew every month. The weight of donations and materials through the O'ahu Redistribution Center. Conducting community-wide pickups that will allow us to continue diverting hundreds of tons of material.

Objective 2: A consistent flow of lumber from the Processing Department to the Redistribution Centers' sales floor. Effectiveness will be measured by the number of lumber sales and the tonnage diverted from the landfill.

Objective 3: Effectiveness will be measured by the number of sales at both Redistribution Centers in alignment with our goal, the number of Workforce Development Participants, and through social media data.

## **IV. Financial**

### **Budget**

1. The applicant shall submit a budget utilizing the enclosed budget forms as applicable, to detail the cost of the request.
  - a. Budget request by source of funds (Link)
  - b. Personnel salaries and wages (Link)
  - c. Equipment and motor vehicles (Link)
  - d. Capital project details (Link)
  - e. Government contracts, grants, and grants in aid (Link)

Enclosed budget forms at the end.

2. The applicant shall provide its anticipated quarterly funding requests for the fiscal year 2023.

Quarter 1	Quarter 2	Quarter 3	Quarter 4	Total Grant
\$40,000	\$60,000	\$60,000	\$40,000	\$200,000

3. The applicant shall provide a listing of all other sources of funding that they are seeking for fiscal year 2023.

In addition to the State of Hawai'i GIA, Re-use Hawai'i is seeking funding from Foundations, Corporate Sponsors and the Economic Development Administration.

**Funding prospects from foundations include:**

Bank of Hawaii  
Hawaiian Airlines  
James and Abigail Family Foundation  
The Healy Foundation  
Koaniani Foundation  
Atherton Family Foundation  
George N. Wilcox Trust  
Cooke Family Foundation  
Hawai'i Community Foundation (CHANGE Grant)  
McInerny Foundation  
A&B Foundation  
HECO  
First Hawaiian Bank

**Corporate Sponsorship prospects include:**

Kona Brewing  
Servco Foundation  
The Kobayashi Group  
HonBlue  
Fergus and Company  
HEMIC  
Honeywell  
Vittum Contracting  
UHA  
Kennedy Wilson  
Hunt Development

4. The applicant shall provide a listing of all state and federal tax credits it has been granted within the prior three years. Additionally, the applicant shall provide a listing of all state and federal tax credits they have applied for or anticipate applying for pertaining to any capital project, if applicable.

We received the Families First Coronavirus Response Act (FFCRA) Tax Credit for 2020-2021 for \$11,519.60

5. The applicant shall provide a listing of all federal, state, and county government contracts, grants, and grants in aid it has been granted within the prior three years and will be receiving for fiscal year 2023 for program funding.

Listed in the document below.

6. The applicant shall provide the balance of its unrestricted current assets as of December 31, 2021.

The balance of unrestricted current assets as of December 31, 2021 \$595,427.80.

## **V. Experience and Capability**

### **1. Necessary Skills and Experience**

The applicant shall demonstrate that it has the necessary skills, abilities, knowledge of, and experience relating to the request. State your experience and appropriateness for providing the service proposed in this application. The applicant shall also provide a listing of verifiable experience of related projects or contracts for the most recent three years that are pertinent to the request.

During Re-use Hawai'i's 15 years of operations, the Deconstruction Program has performed more than 727 deconstruction projects on O'ahu. Over the course of the Redistribution Center's operations, it has distributed more than \$8.5 million worth of recovered building material back into the economy, and into use. These programs combined have diverted more than 11 million pounds of material from the landfill and enhanced the community. Re-use Hawai'i is an established local non-profit organization with an impressive track record of fulfilling our waste diversion goals through material reuse and recycling. Additionally, we have served more than 40,000 unique community members at our Redistribution Center. To date, we've reduced over 7,989.13 tons of GHG emissions, which is equivalent to eliminating 1,775 cars from the roads for an entire year!

Re-use Hawai'i is an established environmental nonprofit organization with an impressive track record of success in fulfilling its mission of waste diversion through material reuse and recycling. The skills needed to perform this work, including knowledge of deconstruction methods, construction and demolition industry practices, personnel training, and nonprofit fundraising, are provided by an experienced leadership team and dedicated staff. The revenue generating streams of Re-use Hawai'i allow for income that is not often available to



other non-profit organizations. Through its careful program design, Re-use Hawai'i is able to generate 86% of the revenue needed to operate, and fundraises the additional 14%.

## 2. Facilities

The applicant shall provide a description of its facilities and demonstrate its adequacy in relation to the request. If facilities are not presently available, describe plans to secure facilities.

The Re-use Hawai'i Redistribution Warehouse is a 40,000 square foot facility in Kaka'ako. The Hawai'i Island location is 30,000 square feet. Equipment involved in the transportation of material includes: three 17' flat-bed trucks, two box trucks, four pickup trucks, four telescopic forklifts, one skid steer machine and three conventional forklift trucks. The deconstruction program currently maintains four tool sets and two tool trailers. The existing administrative infrastructure consists of five offices with multiple workstations with Mac computers.

## VI. Personnel: Project Organization and Staffing

### 1. Proposed Staffing, Staff Qualifications, Supervision and Training

The applicant shall describe the proposed staffing pattern and proposed service capacity appropriate for the viability of the request. The applicant shall provide the qualifications and experience of personnel for the request and shall describe its ability to supervise, train and provide administrative direction relative to the request.

In addition to the board of directors, listed below, we have listed the leadership team, the core team that leads and directs the organization.



**Quinn Vittum** - Executive Director and founder of Re-use Hawai'i - Quinn has 20+ years of experience running reuse organizations and is an innovator in the deconstruction industry. His method of deconstruction is used by many other reuse organizations throughout the U.S, and he is highly regarded as a source for best practices in the field. He is a recent graduate of the prestigious Omidyar Fellows Leadership Training Program.



**Ryan Reynolds** - Ryan, the Deconstruction Program Manager, has been with the company since 2015. He leads the Deconstruction Crew with detailed plans and is a confident and compassionate leader. He keeps our staff well trained and operating smoothly. For our largest deconstruction project he trained over 50 individuals.



**Damian Bilardo** - Damian, the Kona Yard Manager, has been with the company since 2018. He was a project manager for one of the largest demolition companies on the East Coast, and it's no coincidence that he now works for the only organization in Hawai'i committed to providing sustainable alternatives to demolition. He moved to Hawai'i 10 years ago and has been with Re-use Hawai'i for the past 3 years. Damian is passionate about meeting and helping the community with their various DIY projects.



**Michaela Nartia** - Michaela, Director of Administration, has been with Re-use Hawai'i for 5 years. She has worked in several departments, including Material Inventory, customer service, project developer, and is now in charge of finances, administration, and HR. An adept problem solver, Michaela helps guide our crew with an eye for the details that matter most.



**Jaecine Madiro** - Jae, Redistribution Center Program Manager, has over 10 years of experience managing retail operations. She leads the Redistribution Center with compassion, adaptability, and truly listens to all of our community members. She guides the Processing Crew, Receiving Department, and Retail Staff.



**Ariana Whalen** - Ariana, Director of Communications & Fundraising, has over 5 years experience in marketing and 8 years in a leadership position, has grant writing experience, and a passion for educating and engaging the public through social media.



**Tucker Haworth** - Tucker, Deconstruction Project Developer, has led several departments over the course of his career, is a craftsman at heart, and has a knack for identifying exciting projects and partnerships in our community. He has recently joined our team, but has over a decade of experience in the construction and woodworking industry.

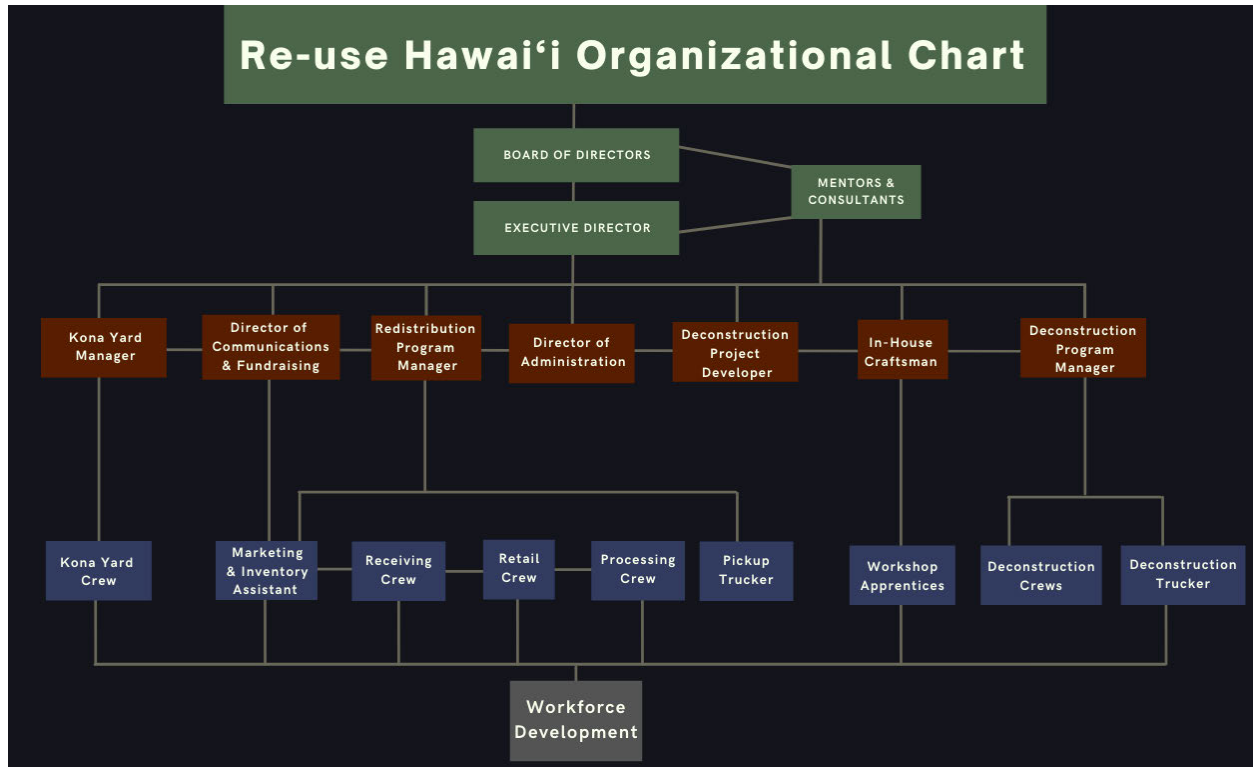


**Phil Ziegler** - Phil, In-House Craftsman, leads our woodworking, workshop efforts, and the Local Tree Reclamation Project. He leads a team in designing and building with salvaged materials. He has a keen eye for detail and was formerly a shipbuilder.

## 2. Organization Chart

The applicant shall illustrate the position of each staff and line of responsibility/supervision. If the request is part of a large, multi-purpose organization, include an organization chart that illustrates the placement of this request.

The organizational chart listed below illustrates the line of responsibility and supervision throughout the organization beginning at the highest level of supervision with the Board of Directors and ending with Workforce Development participants. The Workforce Development participants are supervised and trained by all of the staff listed.



## 3. Compensation

The applicant shall provide an annual salary range paid by the applicant to the three highest paid officers, directors, or employees of the organization by position title, not employee name.

- Executive Director: \$58,997 - \$61,947
- Deconstruction Program Manager: \$48,624 - \$51,055
- Director of Administration: \$47,611 - 49,992

## VII. Other

### 1. Litigation

The applicant shall disclose any pending litigation to which they are a party, including the disclosure of any outstanding judgement. If applicable, please explain.

Sarah Burgett-Leutner v. Re-use Hawai'i: Civil No. 1CCV-20-0001576. The case is being defended by our insurance company and its appointed counsel. The claims are disputed and the plaintiff cannot show any liability against Re-use Hawai'i. The last update from our insurance company on 1/20/22 is that the case will likely be dismissed by the courts.

## **2.      **Licensure or Accreditation****

The applicant shall specify any special qualifications, including but not limited to licensure or accreditation that the applicant possesses relevant to this request.

We are licensed by the Hawai'i State Contractor License Board. Our Contractor's License number is C-28351.

## **3.      **Private Educational Institutions****

The applicant shall specify whether the grant will be used to support or benefit a sectarian or non-sectarian private educational institution. Please see [Article X, Section 1, of the State Constitution](#) for the relevance of this question.

**Not applicable.**

## **4.      **Future Sustainability Plan****

The applicant shall provide a plan for sustaining after fiscal year 2022-23 the activity funded by the grant if the grant of this application is:

- (a)      Received by the applicant for fiscal year 2022-23, but
- (b)      Not received by the applicant thereafter.

While the Hawai'i State GIA would help us further divert thousands of tons of material from the landfills, we have designed our programs to be as self-sufficient as possible, and continue to implement strategies that support that effort. Currently, our program revenue far exceeds our fundraising efforts and could feasibly support the entire nonprofit alone. However, additional funding supports and expands our program's impact, while providing our community with sustainable jobs. Nonprofits involved in statewide waste diversion in other states have historically been supported by the state government, as they perform a crucial statewide need. However, our nonprofit has largely relied on our own revenue streams and fundraising efforts directed at foundations and grants.

As a means of stabilizing our core operations revenue, we have added the Local Tree Reclamation and Workforce Development programs which are meant to support our

community and our nonprofit moving forward. We're able to leverage the strengths of our operations through continuous evaluation of our performance. Re-use Hawai'i continuously adapts and assesses current conditions which allows us to find opportunities and strengths for the path forward. We are so grateful for all of the support we receive from our community, and know that the work we perform is crucial for current and future generations.

## BUDGET REQUEST BY SOURCE OF FUNDS

Period: July 1, 2022 to June 30, 2023

Applicant: Re-use Hawai'i

BUDGET CATEGORIES	Total State Funds Requested (a)	Total Federal Funds Requested (b)	Total County Funds Requested (c)	Total Private/Other Funds Requested (d)
<b>A. PERSONNEL COST</b>				
1. Salaries	92,796		92,388	108,800
2. Payroll Taxes & Assessments	7,099			29,920
3. Fringe Benefits	23,869		13,416	27,200
<b>TOTAL PERSONNEL COST</b>	<b>123,764</b>		<b>105,804</b>	<b>165,920</b>
<b>B. OTHER CURRENT EXPENSES</b>				
1. Airfare, Inter Island				
2. Insurance				
3. Lease/Rental of Equipment	31,650			48,960
4. Lease/Rental of Space			71,796	
5. Staff Training	4,714			
6. Supplies - uniforms, PPE, office supplies, strapping, etc.	21,682		6,560	27,200
7. Telecommunication Cell Phones/Landlines	14,924		8,023	13,600
8. Utilities - Internet	3,266			
9. Disposal/recycling costs			7,817	16,320
10				
11				
12				
13				
14				
15				
16				
17				
18				
19				
20				
<b>TOTAL OTHER CURRENT EXPENSES</b>	<b>76,236</b>		<b>94,196</b>	<b>106,080</b>
<b>C. EQUIPMENT PURCHASES</b>				
<b>D. MOTOR VEHICLE PURCHASES</b>				
<b>E. CAPITAL</b>				
<b>TOTAL (A+B+C+D+E)</b>	<b>200,000</b>		<b>200,000</b>	<b>272,000</b>
<b>SOURCES OF FUNDING</b>		Budget Prepared By:		
(a) Total State Funds Requested	200,000	Michaela Nartia (808) 539-8904		
(b) Total Federal Funds Requested		Name (Please type or print) Phone		
(c) Total County Funds Requested	200,000	Signature of Authorized Official Date		
(d) Total Private/Other Funds Requested	272,000	Michaela Nartia, Director of Administration		
<b>TOTAL BUDGET</b>	<b>672,000</b>	Name and Title (Please type or print)		





**GOVERNMENT CONTRACTS, GRANTS, AND / OR GRANTS IN AID**

Applicant: Re-use Hawaii

Contracts Total:

325,817

	<b>CONTRACT DESCRIPTION</b>	<b>EFFECTIVE DATES</b>	<b>AGENCY</b>	<b>GOVERNMENT ENTITY (U.S./State/Hawaii/ Honolulu/ Kauai/ Maui County)</b>	<b>CONTRACT VALUE</b>
1	FY2021 Hawaii County GIA	10/08/2020	Hawaii County	Hawaii	27,750
2	FY2021 City & County of Honolulu GIA	09/07/2021	C&C of Honolulu	Honolulu	123,067
3	CARES Act Relief Grant	10/19/2020	C&C of Honolulu	Honolulu	40,000
5	FY2020 City & County of Honolulu GIA	08/26/2019	C&C of Honolulu	Honolulu	115,000
4	CARES Act Funds - Coronavirus Aid grant	12/11/2020	Office of the Mayor	Hawaii	10,000
6	EIDL Grant	05/04/2020	SBA	US	10,000
7					
8					
9					
10					
11					
12					
13					
14					
15					
16					
17					
18					
19					
20					
21					
22					
23					
24					
25					
26					
27					
28					
29					
30					



Re-use Hawai'i

Photo Album



Deconstruction at Kona Village



# Princeville Resort Furniture Recovery

*Tons diverted from the landfill & donated to Kaua'i non-profits*





## Princeville Resort Project cont.





# Workforce Development Program

*Diversifying our workforce*





Deconstruction crew at work





## Building the Circular Economy by Designing out Waste in the Construction Industry



# Patagonia Used Salvaged Ward Warehouse Beams in the Design of Their New Space



## Materials Purchased at Re-use Used Locally in Designs and as Building Material



Kuilima Farms Cash Wrap  
- Designed and built by  
Re-use Hawai'i



Wall Tiles from Salvaged  
Ward Warehouse Beams  
in HEMIC's new building



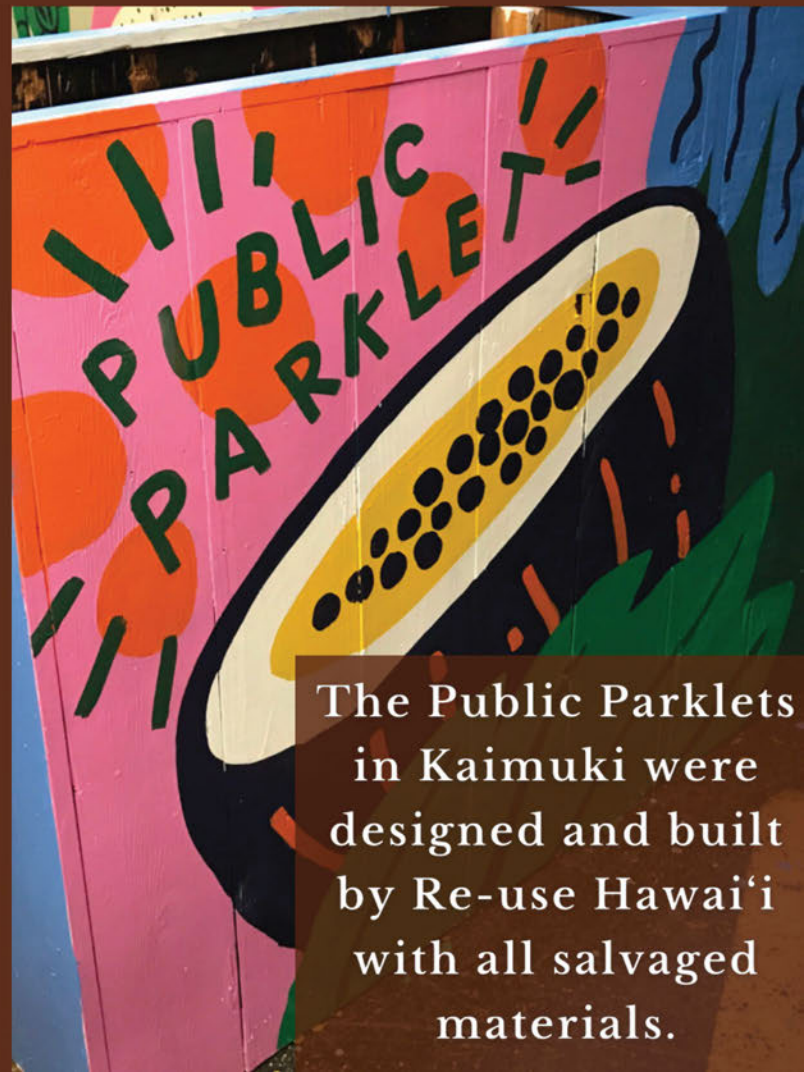


The Plastic Free Wave was designed with structural materials from Re-use. Jack Johnson and the design team are pictured here.

## Local Designs Cont.



A Big Island home made entirely from Re-use materials



The Public Parklets in Kaimuki were designed and built by Re-use Hawai'i with all salvaged materials.



# Mission Fulfillment 2020



## Redistribution Center

Total Shoppers:

18,657

Estimated Community Savings:

\$442,889



## Deconstruction & Diversion

Non-Structural  
67.41%

261  
tons

387  
TONS  
TOTAL

77  
tons

Scrap Metal  
12.63%

49  
tons

Lumber  
19.96%

Total Projects:

42



## Benefits for Hawai'i

Greenhouse Gas (GHG) Reductions:

171.67 tons

GHG Equivalent in Cars Off the Road:

38

Job Creation:

30

# Mahalo Nui Loa for Your Support



Together We Create a More  
Sustainable Future for Hawai‘i