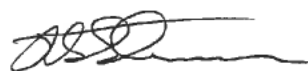


Application Submittal Checklist

The following items are required for submittal of the grant application. Please verify and check off that the items have been included in the application packet.

- 1) Certificate of Good Standing (If the Applicant is an Organization)
- 2) Declaration Statement
- 3) Verify that grant shall be used for a public purpose
- 4) Background and Summary
- 5) Service Summary and Outcomes
- 6) Budget
 - a) Budget request by source of funds ([Link](#))
 - b) Personnel salaries and wages ([Link](#))
 - c) Equipment and motor vehicles ([Link](#))
 - d) Capital project details ([Link](#))
 - e) Government contracts, grants, and grants in aid ([Link](#))
- 7) Experience and Capability
- 8) Personnel: Project Organization and Staffing



AUTHORIZED SIGNATURE

SUSIE THIEMAN, EXECUTIVE DIRECTOR

PRINT NAME AND TITLE

1/20/2022

DATE

**THE THIRTIETH LEGISLATURE
APPLICATION FOR GRANTS
CHAPTER 42F, HAWAII REVISED STATUTES**

Type of Grant Request:

Operating Capital

Legal Name of Requesting Organization or Individual: Lokahi Pacific

Amount of State Funds Requested: \$ 119,350

Brief Description of Request (Please attach word document to back of page if extra space is needed):

The Goals for La Ho'oulu Pae Moku/ReTree Hawaii include: To educate about the climate crisis through learning events at schools and other institutions as well as multi-platform public outreach; To enable people of all ages and walks of life in Hawai'i to participate in the State campaigns to reach carbon neutrality (or beyond) by 2045 and plant 100 million trees in the next ten years, through organized home planting events during the month of November; To increase the number of trees on all inhabited Hawaiian islands to mitigate climate change in addition to many more immediate benefits of wide plant coverage.

Amount of Other Funds Available:

State: \$ 0

Federal: \$ 0

County: \$ 32,120

Private/Other: \$ 10,000

Total amount of State Grants Received in the Past 5 Fiscal Years:

\$ 0

Unrestricted Assets:

\$ 2,249,547

New Service (Presently Does Not Exist): Existing Service (Presently in Operation):

Type of Business Entity:

- 501(C)(3) Non Profit Corporation
 Other Non Profit
 Other

Mailing Address:

1935 Main Street, Suite 204

City: Wailuku, State: HI Zip: 96793

Contact Person for Matters Involving this Application

Name: Susie Thieman


Title: Executive Director

Email: susie@lokahipacific.org

Phone: 808-242-5761, ext 23

Federal Tax ID#: XXXXXXXXXX

State Tax ID# XXXXXXXXXX



Authorized Signature

Susie Thieman, Executive Director

Name and Title

1/20/2022

Date Signed

Application for Grants

If any item is not applicable to the request, the applicant should enter "not applicable".

I. Certification – Please attach immediately after cover page

1. Certificate of Good Standing (If the Applicant is an Organization)

If the applicant is an organization, the applicant shall submit one (1) copy of a certificate of good standing from the Director of Commerce and Consumer Affairs that is dated no earlier than December 1, 2021. **See Attachment A**

2. Declaration Statement

The applicant shall submit a declaration statement affirming its compliance with [Section 42F-103, Hawaii Revised Statutes](#). **See Attachment B**

3. Public Purpose

The applicant shall specify whether the grant will be used for a public purpose pursuant to [Section 42F-102, Hawaii Revised Statutes](#). **See Attachment C**

II. Background and Summary

This section shall clearly and concisely summarize and highlight the contents of the request in such a way as to provide the State Legislature with a broad understanding of the request. Please include the following:

1. A brief description of the applicant's background;

A. Lokahi Pacific - Fiscal Sponsor

Lokahi Pacific is an independent, private non-profit housing and community development organization chartered under the laws of the State of Hawaii and incorporated in 1971. With goal-oriented vision and broad collaboration, Lokahi Pacific develops sensible and successful projects that enrich the economic climate of the county, increase the inventory of affordable and special needs housing and insures that residents participate in that enrichment and share in its benefits. Lokahi Pacific is guided by a volunteer board of directors and administered by an Executive Director and support staff. With decades of service to Maui County's communities, Lokahi Pacific has developed effective management systems and boasts a successful track record of administering public and private funds.

B. ReTree Hawaii

Lā Ho'oulu Pae Moku / ReTree Hawaii was formed in late 2019 to organize a state-wide tree planting day on October 30, 2020 as part of Hawai'i's struggle to mitigate climate change. After the initial planting day, the participating organizations and individuals felt the project should continue in 2021, this time with a full month of planting events in November. Our planting goals are to get 100,000 trees and other plants in the ground through the work of 10,000 volunteers at 1,000 events every year during the month of November. The first two years fell short of the goals, largely due to COVID-19 restrictions, but we expect to increase the numbers (as we have from 2020 to 2021) each year until we reach the goals.

The model is one of distributed self-service, with each planting site deciding what to plant, how many, how many volunteers to accept and on which date and time. The ReTree Hawaii website allows each planting site to register and update its own events and to communicate with those who have signed up to plant with it. It also allows the public to browse upcoming planting events and sign up to participate.

The majority of plants are sourced by the planting site hosts themselves. ReTree Hawaii provides plants to those who do not have funds for their own for plants, particularly schools, community organizations and conservation organizations.

A large number of organizations have expressed their support for the project (see <https://retree-hawaii.org>). Currently, plans are for another month of planting in November 2023.

ReTree Hawaii does not currently have any staff, only a small number of volunteers as organizers.

2. The goals and objectives related to the request;

Goal: Educate about the climate crisis through learning events at schools and other institutions as well as multi-platform public outreach

Objective: Provide educational information through many channels on the causes and consequences of the climate crisis, as well as steps that can be taken in Hawai'i to mitigate and accommodate them, including:

- Assemble source material on general and Hawaii-specific causes and consequences of the climate crisis on the ReTree website
- Create marketing and media plan for reaching all demographics and all areas of the islands
- Regularly publish new material to expand and maintain interest in

addressing the climate crisis through social media as well as TV, radio and newspapers
Participate through on-site booths and media in Earth Day events across the state

Objective: Provide focused educational forums for small groups, including:

Organized educational events in schools, community organizations and businesses

Goal: Enable people of all ages and walks of life in Hawai'i to participate in the State campaigns to reach carbon neutrality (or beyond) by 2045 and plant 100 million trees in the next ten years, through organized home planting events during the month of November

Objective: Reach a large number of people in all major districts of Hawai'i with information about opportunities to plant with others or at home

Objective: Provide guidance on selecting and planting trees and other plants (in the following called "trees"), including:

Create and publish Hawaiian native plant guide specific to Hawaiian water zones

Create and publish non-native plant guide specific to Hawaiian water zones

Goal: Increase the number of trees on all inhabited Hawaiian islands to mitigate climate change, in addition to the many more immediate benefits of wider plant coverage; encourage organizations and individuals across Hawai'i to continue planting and maintaining their plants beyond the ReTree events in November

Objective: Recruit planting sites, including:

Use existing lists of environmental organizations, the DOE lists of school contacts and Web searches to register conservation and environmental organizations, schools, hotels and resorts, golf courses, nurseries, faith-based organizations

Repeatedly contact potential planting sites by email and phone and urge them to register for planting during the month of November 2022

Objective: Recruit planting volunteers, including:

Start persistent media campaign on Earth Day to tie the climate crisis with the benefits of planting through email, social media, radio, TV and newspapers
Contact schools, businesses and government agencies to encourage team signups for planting

Arrange for supporting proclamations by the Governor and Mayors for the planting event

Objective: Continue flow of information about the climate crisis and about planting activities through email to participating organizations after the planting events

Objective: Follow up with planting hosts on plant survival rates after 3 months

Objective: Encourage home planting for those not able to participate at an organized planting event

Objective: Collect and present all collective and individual planting results with pictures on the website

Objective: Provide press releases with wide delivery to publicize the results of the planting events

3. The public purpose and need to be served;

Mitigating climate change is an existential challenge for Hawai'i, with the bulk of the State population and infrastructure located on or very near the shoreline. Besides sea level rise and the accompanying coastal erosion and tsunami threats, climate change means more frequent and more severe weather-influenced events, such as storms and wildfires.

The state of Hawai'i has established a goal of being carbon neutral or better by 2045. To the extent that energy production, transportation and the built environment cannot all be made 100% carbon-neutral by that date, any excess carbon will need to be offset by techniques that take carbon out of the atmosphere or near environment. Planting trees is an extremely cost-effective way to offset carbon on a significant scale.

The Hawai'i DLNR has announced in 2021 a goal of planting 100 million trees over the next ten years. (<https://dlnr.hawaii.gov/blog/2021/09/25/nr21-169/>) However, the DLNR says that it is only capable of planting 50,000 trees per year, far short of the goal. Additional efforts, locations and resources will be required. ReTree Hawai'i empowers residents to plant trees in their yards, drastically increasing the available land and labor required to accomplish the 100 million trees goal.

Flourishing habitats for native plants protect our watersheds, which provide us with safe drinking water, prevent runoff from polluting our oceans and damaging the reefs, minimize dangerous flooding, and buffer us against harmful effects of climate change (mentioned above). Native plants are the foundation for native ecosystems, home to countless other unique native animals, such as snails, bats, birds and insects. Loss of plant life degrades precious ecosystems that sustain all life, including humans. When plant populations decline, life that depends on them also declines. Severing ecological relationships has consequences that cascade through the natural environment and into our own. Native plants, their histories and

relationships with other organisms have much to teach us about how life has been and should be balanced in our islands.

The University of Hawai'i Economic Research Organization (UHERO) has estimated the value of the goods and services that a single Hawaiian Watershed provides is \$7.4 to \$14 billion dollars (The Nature Conservancy of Hawai'i, "Last Stand, The Vanishing Hawaiian Forest", 2008). Currently the State of Hawai'i spends less than 1% of its budget to protect all of its natural resources, leading to a need for non-profit and grassroot assistance.

A study in California found that for every \$1 spent on tree planting and maintenance, urban trees deliver \$5.82 in benefits ("Funding Trees for Health", The Nature Conservancy, 2015).

The 2015 USDA document "The State of California's Street Trees" states: "The total annual benefits provided by street trees are \$1 billion", calculated as: "California's 9.1 million street trees save 684 GWH of electricity annually, equivalent to the amount required to air condition 530,000 California households each year. In addition, 7.78 million metric tonnes of CO2 emissions are stored in the state's street trees. They remove and avoid 567,748 tonnes of CO2 emissions annually, equivalent to removing 120,000 cars from the road. Street trees intercept the equivalent to the average amount of potable water consumed by 52,400 California households each year (6.92 billion gallons of rainfall annually). The average annual air pollutant uptake by California's street trees is 0.64 lb."

The report "Municipal forest benefits and costs in five U.S. cities" in the Journal of Forestry, 2005, states "Although these cities spent \$13– 65 annually per tree, benefits ranged from \$31 to \$89 per tree. For every dollar invested in management, benefits returned annually ranged from \$1.37 to \$3.09."

It is to be noted that the bulk of the plants in this campaign are dibble-sized native plants obtained at a wholesale price of approximately \$4 each, as opposed to USDA Urban Forestry projects which estimate \$65 each for sizable (two inch diameter trunk) trees. The benefit/cost ratio is much higher for this campaign than the estimates above from activities in other cities.

4. Describe the target population to be served; and

Planting events are hosted by schools, hotels and resorts, places of worship, community organizations, home-owner associations, conservation organizations, State, County and Federal parks and reserves and many others. Volunteers include school children, business work teams, community organization teams and individuals. Many individuals also plant at home. Participants cover the full range of ethnic groups, income levels, genders and age groups of Hawai'i.

Education around the climate crisis is also directed towards all segments of the population, with a particular focus on schools.

5. Describe the geographic coverage.

The goal is to have planting opportunities on all populated Hawaiian islands and also on Kaho'olawe, with events in all major districts of each island. In 2021 there were events on Kaho'olawe and all populated islands except for Ni'ihau.

The information work combines state-wide media campaigns with focused per-island campaigns.

III. Service Summary and Outcomes

The Service Summary shall include a detailed discussion of the applicant's approach to the request. The applicant shall clearly and concisely specify the results, outcomes, and measures of effectiveness from this request. The applicant shall:

Describe the scope of work, tasks and responsibilities;

The work involves:

- Researching and contacting potential organizations to support or sponsor the project
- Researching potential organizations that can host planting events
- Communication with potential planting host organizations to aid them in registering events on the website
- Contacting schools to offer educational events around the climate crisis and planting
- Developing relationships with nurseries on each island
- Estimating quantities and types of plants required on each island
- Placing orders on each island to prepare plants
- Planning specific plant deliveries to each site that does not have its own sources
- Planning and participating in Earth Day and Arbor Day events where possible on the different islands
- Establishing a pool of speakers/educators for school events with expertise in different areas of climate change and planting
- Coordinating speaker requests from schools
- Following up with planting hosts on results from planting events and on plant survival rates
- Planning and executing media campaigns for the above on conventional and social media

- Developing planting guides for the individual islands

The central marketing elements of the project are the website <https://retree-hawaii.org> and the Facebook page <https://facebook.com/ReTreeHawaii>. Sites for planting are recruited by compiling lists of all conservation organizations, environmental organizations, schools, hotels and resorts, golf courses, nurseries, tour operators, AOAOs and faith-based organizations. Each organization is contacted repeatedly by email and/or phone and asked to register on the website.

Conventional marketing is through social media, printed media and radio PSAs, along with interviews in newspapers and on TV stations. Much outreach is through the networks of dozens of participating and supporting organizations.

ReTree Hawaii maintains a pool of speakers/educators who can hold educational events about the climate crisis and about the value of planting at schools of all levels. When COVID restrictions have been lifted, we expect to be able to hold many more such events.

The website makes it easy for a planting host to see who has signed up to an upcoming event at his/her site and to communicate with the volunteers, as well as to report results and survival rates. It also makes it easy to sign up to volunteer as an individual or a group and to see and update all of his/her signups. The public can see all future events on the website and also the results of any past events at any time.

2. Provide a projected annual timeline for accomplishing the results or outcomes of the service;

September 1 – December 23, 2022

Offer and execute at least ten educational events at schools and other host sites

September 1 – October 31, 2022

Contact potential plant hosting sites by email and telephone, aid them in registering as planting sites on the website and assist them in finding appropriate plants for their area

October 1 – November 30, 2022

Continuous media campaign to reach as many people as possible with information about the climate crisis and about the upcoming planting events, and to encourage them to sign up for one or more of them, and also to plant at home and report the results on the website

November 5, 2022

Participate with flyers at Arbor Day events across the state

November 1 – November 30, 2022

Planting events across the state

December 30, 2022

Request 30-day survival rate reports from all plant hosting sites

January 30, 2022

Request 60-day survival rate reports from all planting sites

January 1 – January 31, 2023

Review, assess and report on results from 2022 campaign

February 1 – February 28, 2023

Plan for 2023 media campaigns, educational events and November 2023 planting events

March 1 – August 31, 2023

Recruit planting sites for November 2023, collect plant orders

April 23, 2023

Participate in Earth Day events with booths, flyers and computers for registration

April 30, 2023

Finalize plant orders for each island based on requests from planting hosts, assisting in plant choices when needed, place orders with nurseries on each island

May 1 – August 31, 2023

Ramp up media campaign around the November ReTree Hawaii campaign

3. Describe its quality assurance and evaluation plans for the request. Specify how the applicant plans to monitor, evaluate, and improve their results; and

All planting sites, planting events volunteers, educational events, plants to provide, plants planted, pictures from planting events and home planting results are posted and managed on the website. Planting sites are contacted 30 days after November 2023 to follow up on plant survival rates, also posted through the website.

The team meets weekly during the period September 1 through December 15 to review results and make any corrections needed.

The following were the elements constraining progress in 2020 and 2021:

- COVID-19 risks and restrictions caused many organizations and schools to call off all activities or restrict them to their own staff

- We had full funding for plants in Maui County in 2021 but not for the other counties
 - Limited organizing outside of Maui County; it will be necessary to recruit organizers in the other counties to achieve comparable success there
 - Recruiting more planting sites and volunteers is a significant, long-term effort, requiring more time than a few volunteers could collectively muster; for 2022 we are seeking funding for a half-time volunteer coordinator to help with this work
4. List the measure(s) of effectiveness that will be reported to the State agency through which grant funds are appropriated (the expending agency). The measure(s) will provide a standard and objective way for the State to assess the program's achievement or accomplishment. Please note that if the level of appropriation differs from the amount included in this application that the measure(s) of effectiveness will need to be updated and transmitted to the expending agency.

The planting goals for ReTree Hawaii in the 2023 fiscal year are to double the numbers from November 2021:

125 planting events
 1,200 volunteers at planting events or at home
 25,000 plants in the ground

IV. Financial

Budget

1. The applicant shall submit a budget utilizing the enclosed budget forms as applicable, to detail the cost of the request.
 - a. Budget request by source of funds (Link)
 - b. Personnel salaries and wages (Link)
 - c. Equipment and motor vehicles (Link)
 - d. Capital project details (Link)
 - e. Government contracts, grants, and grants in aid (Link)
2. The applicant shall provide its anticipated quarterly funding requests for the fiscal year 2023.

Quarter 1	Quarter 2	Quarter 3	Quarter 4	Total Grant
20,500	48,000	28,000	22,850	119,350

3. The applicant shall provide a listing of all other sources of funding that they are seeking for fiscal year 2023.

ReTree Hawaii will seek funding as follows:

- 4. \$30,000 Maui County Office of Economic Development
 - \$10,000 Individual donations
 - \$20,000 Private foundation grants
-
- 4. The applicant shall provide a listing of all state and federal tax credits it has been granted within the prior three years. Additionally, the applicant shall provide a listing of all state and federal tax credits they have applied for or anticipate applying for pertaining to any capital project, if applicable.

Not applicable

- 5. The applicant shall provide a listing of all federal, state, and county government contracts, grants, and grants in aid it has been granted within the prior three years and will be receiving for fiscal year 2023 for program funding.

ReTree Hawaii - 2022 Maui County Office of Economic Development
\$45,000

- 6. The applicant shall provide the balance of its unrestricted current assets as of December 31, 2021.

ReTree Hawaii - \$5,500 General use assets

V. Experience and Capability

1. Necessary Skills and Experience

The applicant shall demonstrate that it has the necessary skills, abilities, knowledge of, and experience relating to the request. State your experience and appropriateness for providing the service proposed in this application. The applicant shall also provide a listing of verifiable experience of related projects or contracts for the most recent three years that are pertinent to the request.

The two main organizers of 2021 ReTree Hawaii are Rob Weltman and Andy Fox.

Rob Weltman is president of the Maui Nui EV Association, board member of the Climate Action Advisory Committee to the Maui County Council, Chair of the Outings Committee of Sierra Club Maui Group, organizer of dozens of volunteer planting events for Sierra Club on Maui, planting volunteer with many of the conservation organizations on Maui; Chairperson of Sierra Club Maui Group 2016-2020. Rob Weltman was the founder of Lā Ho'oulu Pae Moku / ReTree Hawaii in 2019.

Andy Fox is Friends of Haleakalā National Park Board member, Treasurer, Service Trip Coordinator, Trip Leader and a volunteer with the Haleakalā National Park Nursery; He

also regularly volunteers with Auwahi Forest Recovery Project (focuses on planting native species in protected zones); Coral Reef Alliance (erosion control and planting primarily); Kealia Pond National Wildlife Refuge (revegetating the KPNWR with irrigation driven native plantings); Sierra Club member; Maui Nui Marine Resource Council member.

Lā Ho'oulu Pae Moku / ReTree Hawaii was formed in late 2019 with the goal of holding a state-wide planting day October 30, 2020. Despite severe limitations due to the COVID-19 restrictions and reluctance to participate in group activities, and with many organizations withdrawing due to national policies on COVID-19 safety, a state-wide event was held on October 30, 2020 and a month-long series of planting events in November, 2021. In 2020 there were 53 events with a total of 532 participants, putting 5,722 plants in the ground on all populated Hawaiian islands except for Ni'ihau. In 2021 there were over 70 events with almost 1,500 participants, putting about 11,000 plants in the ground on Kaho'olawe as well as all populated Hawaiian islands except for Ni'ihau. At this point we have a large network of organizations and individuals interested in participating in planting events. We anticipate that by November 2023, COVID-19 restrictions will have been removed or reduced to an extent where many more organizations and people will be willing to take part in group activities. We also have a network of nurseries to provide plants on all populated islands except Ni'ihau.

A Maui County grant allowed ReTree Hawaii to provide plants to all who requested them within the county, but we had very limited funds to provide plants on the other islands and had to turn down or severely limit many of them. Additional funding will allow many more sites to participate, particularly schools.

2. Facilities

The applicant shall provide a description of its facilities and demonstrate its adequacy in relation to the request. If facilities are not presently available, describe plans to secure facilities.

ReTree Hawaii does not maintain facilities. Organizers do their work by computer and meet at private residences or remotely. Planting sites pick up plant orders directly from participating nurseries.

VI. Personnel: Project Organization and Staffing

1. Proposed Staffing, Staff Qualifications, Supervision and Training

The applicant shall describe the proposed staffing pattern and proposed service capacity appropriate for the viability of the request. The applicant shall provide the qualifications and experience of personnel for the request and shall describe its ability to supervise, train and provide administrative direction relative to the request.

ReTree Hawaii proposed staff:

A half-time Volunteer Coordinator reaches out to current and prospective planting site hosts around the state to encourage and guide them to participating in the 2022 planting events, as well as to follow up with them on the results and maintenance of the plants. The Coordinator develops material for reach-out to volunteers and the general public through conventional and social media.

The Volunteer Coordinator must be familiar with creating content for social media and be comfortable with very frequent client interaction (mostly with planting site hosts). The Coordinator tracks all progress in communications with potential sites and follow up wherever necessary. ReTree Hawaii has a CRM system to help with this.

The Volunteer Coordinator will be trained and supervised by ReTree Hawaii's Chief Organizer Rob Weltman (who has decades of managerial experience). Broad direction will be provided by the ReTree Hawaii Coordinating Committee (a small group of active volunteer organizers).

2. Organization Chart

The applicant shall illustrate the position of each staff and line of responsibility/supervision. If the request is part of a large, multi-purpose organization, include an organization chart that illustrates the placement of this request.

Please see **Attachment D**

3. Compensation

The applicant shall provide an annual salary range paid by the applicant to the three highest paid officers, directors, or employees of the organization by position title, not employee name.

Lokahi Pacific salary range: Executive Director, \$85,900; Senior Accountant, \$80,000; Housing Administrator, \$50,000

VII. Other

1. Litigation

The applicant shall disclose any pending litigation to which they are a party, including the disclosure of any outstanding judgement. If applicable, please explain.

Not applicable

2. Licensure or Accreditation

The applicant shall specify any special qualifications, including but not limited to licensure or accreditation that the applicant possesses relevant to this request.

Not applicable

3. Private Educational Institutions

The applicant shall specify whether the grant will be used to support or benefit a sectarian or non-sectarian private educational institution. Please see [Article X, Section 1, of the State Constitution](#) for the relevance of this question.

Not applicable

4. Future Sustainability Plan

The applicant shall provide a plan for sustaining after fiscal year 2022-23 the activity funded by the grant if the grant of this application is:

- (a) Received by the applicant for fiscal year 2022-23, but
- (b) Not received by the applicant thereafter.

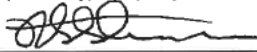
ReTree Hawaii received a grant from the County of Maui for the 2022 fiscal year and anticipates receiving the grant again in the future. While sufficient for the program needs in Maui County, the funds cannot be used to support planting and education activities on the other islands. The GIA funds will allow us to achieve comparable results on Oahu, Kauai and Hawai'i Island.

They will pursue grants from the other counties, as well as additional funds from private foundations and individuals to cover the costs going forward. If the GIA grant is not available after fiscal year 2022-23, our progress towards the 1,000/10,000/100,000 yearly goals may be delayed as we focus key personnel on grant writing and sourcing other funds.

BUDGET REQUEST BY SOURCE OF FUNDS

Period: July 1, 2022 to June 30, 2023

Applicant: Lokahi Pacific

BUDGET CATEGORIES	Total State Funds Requested (a)	Total Federal Funds Requested (b)	Total County Funds Requested (c)	Total Private/Other Funds Requested (d)
A. PERSONNEL COST				
1. Salaries	22,000			
2. Payroll Taxes & Assessments	3,080			
3. Fringe Benefits	4,620			
TOTAL PERSONNEL COST	29,700			
B. OTHER CURRENT EXPENSES				
1. Airfare, Inter-Island				
2. Insurance				
3. Lease/Rental of Equipment				
4. Lease/Rental of Space				
5. Staff Training				
6. Supplies				
7. Telecommunication				
8. Utilities				
9. Marketing				
10. Media production materials	10,000		2,000	
11. Education materials	5,000		3,000	
12. Outreach materials and campaigns	15,000		2,000	
13. Rental 4WD vehicles	4,000		1,000	
14. Plants	70,000		20,000	10,000
15. Tools, gloves	4,500		1,200	
16. Fiscal sponsor fee	10,850		2,920	
17				
18				
19				
20				
TOTAL OTHER CURRENT EXPENSES	119,350		32,120	10,000
C. EQUIPMENT PURCHASES				
D. MOTOR VEHICLE PURCHASES				
E. CAPITAL				
TOTAL (A+B+C+D+E)	149,050		32,120	10,000
SOURCES OF FUNDING		Budget Prepared By:		
(a) Total State Funds Requested		Susie Thieman 808-242-5761		
(b) Total Federal Funds Requested		Name (Please type or print) Phone		
(c) Total County Funds Requested				
(d) Total Private/Other Funds Requested		44,581 Date		
TOTAL BUDGET		Susie Thieman, Executive Director		
		Name and Title (Please type or print)		

BUDGET JUSTIFICATION - PERSONNEL SALARIES AND WAGES

Period: July 1, 2022 to June 30, 2023

Applicant: Lokahi Pacific__

POSITION TITLE	FULL TIME EQUIVALENT	ANNUAL SALARY A	% OF TIME ALLOCATED TO GRANT REQUEST B	TOTAL STATE FUNDS REQUESTED (A x B)
Volunteer Coordinator	0.5	\$22,000.00	100.00%	\$ 22,000.00
				\$ -
				\$ -
				\$ -
				\$ -
				\$ -
				\$ -
				\$ -
				\$ -
				\$ -
				\$ -
				\$ -
				\$ -
				\$ -
				\$ -
TOTAL:				22,000.00
The Volunteer Coordinator reaches out to current and prospective planting site hosts and develops material for reach-out to volunteers.				

BUDGET JUSTIFICATION - EQUIPMENT AND MOTOR VEHICLES

Period: July 1, 2022 to June 30, 2023

Applicant: Lokahi Pacific

DESCRIPTION EQUIPMENT	NO. OF ITEMS	COST PER ITEM	TOTAL COST	TOTAL BUDGETED
			\$ -	
			\$ -	
			\$ -	
			\$ -	
			\$ -	
TOTAL:				
JUSTIFICATION/COMMENTS:				

DESCRIPTION OF MOTOR VEHICLE	NO. OF VEHICLES	COST PER VEHICLE	TOTAL COST	TOTAL BUDGETED
			\$ -	
			\$ -	
			\$ -	
			\$ -	
			\$ -	
TOTAL:				
JUSTIFICATION/COMMENTS:				

BUDGET JUSTIFICATION - CAPITAL PROJECT DETAILS

Period: July 1, 2022 to June 30, 2023

Lokahi Pacific

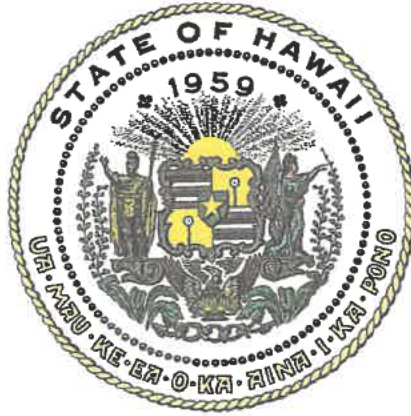
FUNDING AMOUNT REQUESTED						
TOTAL PROJECT COST	ALL SOURCES OF FUNDS RECEIVED IN PRIOR YEARS		STATE FUNDS REQUESTED	OTHER SOURCES OF FUNDS REQUESTED	FUNDING REQUIRED IN SUCCEEDING YEARS	
	FY: 2020-2021	FY: 2021-2022	FY:2022-2023	FY:2022-2023	FY:2023-2024	FY:2024-2025
PLANS						
LAND ACQUISITION						
DESIGN						
CONSTRUCTION						
EQUIPMENT						
TOTAL:						
JUSTIFICATION/COMMENTS:						

GOVERNMENT CONTRACTS, GRANTS, AND / OR GRANTS IN AID

Ap̄ Lokahi Pacific

Contracts Total:

	CONTRACT DESCRIPTION	EFFECTIVE DATES	AGENCY	GOVERNMENT ENTITY (U.S./State/Hawaii/ Honolulu/ Kauai/ Maui County)	CONTRACT VALUE
1					
2					
3					
4					
5					
6					
7					
8					
9					
10					
11					
12					
13					
14					
15					
16					
17					
18					
19					
20					
21					
22					
23					
24					
25					
26					
27					
28					
29					
30					



Department of Commerce and Consumer Affairs

CERTIFICATE OF GOOD STANDING

I, the undersigned Director of Commerce and Consumer Affairs of the State of Hawaii, do hereby certify that

LOKAHI PACIFIC

was incorporated under the laws of Hawaii on 05/11/1971 ; that it is an existing nonprofit corporation; and that, as far as the records of this Department reveal, has complied with all of the provisions of the Hawaii Nonprofit Corporations Act, regulating domestic nonprofit corporations.

IN WITNESS WHEREOF, I have hereunto set my hand and affixed the seal of the Department of Commerce and Consumer Affairs, at Honolulu, Hawaii.

Dated: January 19, 2022

Director of Commerce and Consumer Affairs



**DECLARATION STATEMENT OF
APPLICANTS FOR GRANTS PURSUANT TO
CHAPTER 42F, HAWAI'I REVISED STATUTES**

The undersigned authorized representative of the applicant certifies the following:

1) The applicant meets and will comply with all of the following standards for the award of grants pursuant to Section 42F-103, Hawai'i Revised Statutes:

- a) Is licensed or accredited, in accordance with federal, state, or county statutes, rules, or ordinances, to conduct the activities or provide the services for which a grant is awarded;
- b) Complies with all applicable federal and state laws prohibiting discrimination against any person on the basis of race, color, national origin, religion, creed, sex, age, sexual orientation, or disability;
- c) Agrees not to use state funds for entertainment or lobbying activities; and
- d) Allows the state agency to which funds for the grant were appropriated for expenditure, legislative committees and their staff, and the auditor full access to their records, reports, files, and other related documents and information for purposes of monitoring, measuring the effectiveness, and ensuring the proper expenditure of the grant.

2) If the applicant is an organization, the applicant meets the following requirements pursuant to Section 42F-103, Hawai'i Revised Statutes:

- a) Is incorporated under the laws of the State; and
- b) Has bylaws or policies that describe the manner in which the activities or services for which a grant is awarded shall be conducted or provided.

3) If the applicant is a non-profit organization, it meets the following requirements pursuant to Section 42F-103, Hawai'i Revised Statutes:

- a) Is determined and designated to be a non-profit organization by the Internal Revenue Service; and
- b) Has a governing board whose members have no material conflict of interest and serve without compensation.

Pursuant to Section 42F-103, Hawai'i Revised Statutes, for grants used for the acquisition of land, when the organization discontinues the activities or services on the land acquired for which the grant was awarded and disposes of the land in fee simple or by lease, the organization shall

negotiate with the expending agency for a lump sum or installment repayment to the State of the amount of the grant used for the acquisition of the land.

Further, the undersigned authorized representative certifies that this statement is true and correct to the best of the applicant's knowledge.

Lokahi Pacific
(Typed Name of Individual or Organization)



(Signature) 1/20/2022

(Date)

Susie Thieman Executive Director
(Typed Name) (Title)

§42F-102 Applications for grants. Requests for grants shall be submitted to the appropriate standing committees of the legislature at the start of each regular session of the legislature. Each request shall state:

- (1) The name of the requesting organization or individual;
- (2) The public purpose for the grant;
- (3) The services to be supported by the grant;
- (4) The target group; and
- (5) The cost of the grant and the budget. [L 1997, c 190, pt of §3; am L 2014, c 96, §61]

Section 42F- 102 Acknowledgement

The undersigned hereby confirms and acknowledges that the grant will be used for a public purpose pursuant to Section 42F-I 02, Hawaii Revised Statutes, as stated above.

Lokahi Pacific
(Typed Name of Organization)



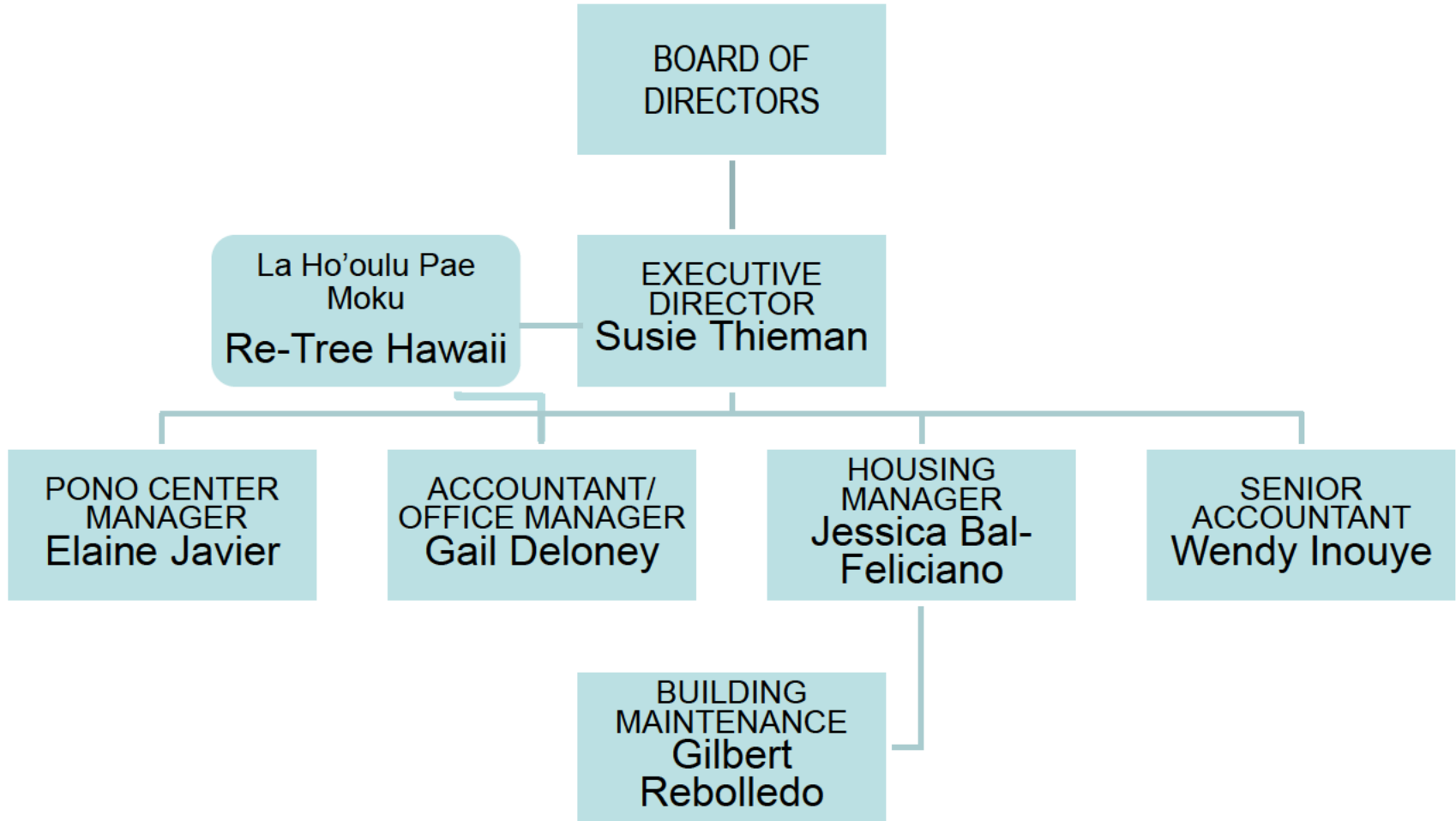
Susie Thieman, Executive Director

1/20/22

Date

Lokahi Pacific

Organization Chart



AS OF 10/31/21



June 10, 2020

To Whom it May Concern,

Common Ground Collective (CGC) is one of the organizations participating in the state-wide planting day on October 30, 2020 and a participant of the ReTree Hawai'i coordination team. We see a great value in this statewide initiative. There has never been a more urgent time to invest in island resilience and adaptation. In light of the COVID-19 pandemic and climate crisis upon us the need for more resilience across Hawai'i has never been more clear.

Hawai'i is vulnerable to coral bleaching, sea level rise, species extinctions, extreme weather events, and we are already seeing the effects. Among the greenhouse gas offsetting proposals in the State of Hawaii Office of Planning Climate Change Mitigation Strategy, "urban forestry" and "green infrastructure" have been among the primary goals for urban and built environments for the state. Trees create shade, offer natural resource services, like protecting watersheds, filtering pollutants, providing clean water, enhancing biodiversity, all while sequestering carbon that would otherwise heat the planet.

Encouraging planting within all sectors creates a teaching opportunity and feeling of connectedness and responsibility among our island community. It will act to enhance the beauty of our islands, and can help to feed our community when planting fruit bearing trees and offer other value-added products, like 'ulu pies, olive oil, guacamole, and coconut milk/water that can also assist in increasing island self-sufficiency and economic strength.

I would encourage your organization to help support this very worthy cause and I believe it will offer a good ROE (Return on Environment).

Mahalo for your consideration,

Ananda Stone
CGC Chair
cgcmaui@gmail.com
Commongroundcollective.com
(808) 281-4591



CORAL REEF ALLIANCE

To Whom It May Concern:

On behalf of the ReTree Initiative, Coral Reef Alliance would like to express support for their cause in planting trees island wide on Maui, Hawaii. Coral Reef Alliance is restoring a watershed in West Maui by planting native plants, shrubs and trees, which will keep sediment on land instead of the ocean. ReTree's project is in line with our current work and we are excited to be a part of it along with other great local organizations.

Please do not hesitate to be in touch with further questions.

Best Regards,

Larissa Treese, Program Coordinator
Coral Reef Alliance
808-344-2533
ltreese@coral.org

The Friends of Haleakalā National Park

P. O. Box 322, Makawao, HI 96768

www.fhnp.org

June 18, 2020

To whom it may concern;

The Friends of Haleakala National Park (FHNP) is one of the organizations participating in the state-wide planting project on October 30, 2020 and a participant of the ReTree Hawai'i coordination team. Our particular interest is in helping to re-establish native forest species to stabilize our ecosystems. We see a great value in this statewide initiative. There has never been a more urgent time to invest in island resilience and adaptation. In light of the COVID-19 pandemic and climate crisis upon us the need for more resilience across Hawai'i has never been more clear. Hawai'i is vulnerable to coral bleaching, sea level rise, species extinctions, extreme weather events, and we are already seeing the effects. Among the greenhouse gas offsetting proposals in the State of Hawaii Office of Planning Climate Change Mitigation Strategy, "urban forestry" and "green infrastructure" have been among the primary goals for urban and built environments for the state. Trees create shade, offer natural resource services, like protecting watersheds, filtering pollutants, providing clean water, enhancing biodiversity, all while sequestering carbon that would otherwise heat the planet. FHNP is happy to offer support to this project.

Sincerely,

Matt Wordeman, president Friends of Haleakala National Park.

HAWAIIAN ISLANDS HUMPBACK WHALE NATIONAL MARINE SANCTUARY

25 June 2020

From: Sara Wood, LTJG/NOAA *Sara Wood*
Facility and Vessels Operations Coordinator
Hawaiian Islands Humpback Whale National Marine Sanctuary

Subject: Letter of Support

Hawaiian Islands Humpback Whale National Marine Sanctuary is a supporter of Re-Tree Hawai'i, an impressive cause that seeks to plant hundreds of trees and plants across the Hawaiian island chain. The outcome of such an effort will be restoration to not only our lands, but will also have positive impacts on our coastline and reefs as well. What happens on the land and hillsides above Hawaiian shores has a direct effect on the marine environment. The humpback whales that return to our waters each winter rely on the health of this ecosystem, as do all organisms of the marine environment; we believe that we can all play an integral role in protecting these critical ecological communities. We have partnered with Re-Tree Hawai'i and encourage volunteers and other partners to join to create a better future for our community.



**Maui Headquarters,
Visitor Center**
726 South Kihei Rd
Kihei, HI 96753
Toll Free: 1-800-831-4888
(808) 879-2818

O'ahu Office
DKIRC/NOS/HIHWNMS
1845 Wasp Blvd
Bldg 176
Honolulu, HI 96818

Kaua'i Center
Kukui Grove Center
3-2600 Kaunuali'i Hwy
Suite 1618
Līhu'e, Hawai'i 96766

Kaua'i Office
3260 Kailani St
Līhu'e, Hawai'i 96766
(808) 246-2860

**State of Hawai'i
Division of Aquatic
Resources**
1151 Punchbowl St #330
Honolulu, HI 96813
(808) 587-0437

Martin Frye
Maui Nui Seabird Recovery Project
P.O. Box 903
Makawao, Hawai'i 96768
Office: 572-3500
Email: mfrye@hawaii.edu



2020-06-23

To whom it may concern,

Aloha and mahalo for your time in considering giving financial support to Lā Ho'oulu Pae Moku – ReTree Hawai'i. On behalf of Maui Nui Seabird Recovery Project, which is a partnering group for this year's October 30 state-wide planting day, I would like to add our support for ReTree's continued efforts to seek funds to supplement community groups who would like to host a planting event, but who do not have funding for planting materials.

Every additional group adds to the chain of districts across the islands coming together to reinvest in their community by reinforcing one of Hawai'i's most beloved positive externalities: the abundant vegetation, particularly native species assemblages that fulfill ecosystem and cultural functions. Importantly, the way ReTree has constructed the event, host sites can structure planting events into an action that produces a result appropriate to the host sites needs, and in the process promotes precisely the kind of goodwill that strengthens communities.

If there should be any reason to follow-up or correspond more regarding our support for the October 30 state-wide planting event, please contact me at the email address listed above.

Aloha,

Martin Frye



*MALAMA I KA HONUA
Cherish the Earth*

To Whom It May Concern:

Sierra Club Maui Group considers the Lā Ho'olu Paemoku./ReTree Hawaii project to be of major importance for Maui. It has the potential to greatly increase the awareness across the County of the threats of climate change, to bring together people of all ages and many organizations to work on solutions and to collectively put many plants in the ground on October 30, 2020. Planting trees is one of the most effective actions ordinary citizens can take to mitigate climate change and it will provide many additional benefits for Maui County.

Me ka ha'aha'a,

A handwritten signature in black ink that reads "Rob Weltman". The signature is fluid and cursive, with a long horizontal line extending to the right.

Rob Weltman

Chairperson, Sierra Club Maui Group

PO Box 791180, Paia, HI 96779 | 808-419-5143 | sierraclubmauigroup@gmail.com | mauisierraclub.org

Emailed correspondence reduces paper waste. If you do print this letter, please recycle. Mahalo.



MAUI FOREST BIRD RECOVERY PROJECT

2465 OLINDA ROAD
MAKAWAO, HI 96768
TEL 808.573.0280
WWW.MAUIFORESTBIRDS.ORG

June 25, 2020

To Whom it May Concern,

Our organization would like to offer our support to ReTree Hawaii and the state-wide planting efforts being organized for October 30, 2020.

MFBRP is dedicated to reforestation efforts across Maui and promoting the use of native species at every elevation.

Sincerely,

A handwritten signature in black ink, appearing to read 'Hanna Mounce'. The signature is fluid and cursive, with a large initial 'H' and 'M'.

Dr. Hanna Mounce

MFBRP Coordinator
mounce@hawaii.edu



June 10, 2020

To Whom It May Concern:

ReTree Hawaii is unique.

ReTree Hawaii is essential at this moment in time when many economic, social, and cultural decisions of societies across the world within the last half-century (at least) have run counter to and/or without consideration of the natural rhythms and sustained health of our planet. Consequences are seen every day under the banner of climate change

With aggregated effort in the spirit of mitigation, Montessori School of Maui's Middle School Program is committed to ReTree Hawaii on October 30, 2020 when we plan to plant trees in our Upcountry community. With your support to offset the cost of purchasing plants, schoolchildren and families will affably get their hands dirty. This community service is anticipated to tie into the study of the economy through an environmental cost perspective.

Montessori School of Maui thanks you for considering a financial partnership with ReTree Hawaii

With Warm Aloha,

A handwritten signature in black ink, appearing to read 'Jeffrey Friedman'.

Jeffrey Friedman
Middle School Lead Guide
Montessori School of Maui



The Sustainable Tourism Association of Hawai'i is a non-profit organization (founded in 1996) that is focused on protecting Hawai'i's natural and cultural resources through the promotion of responsible tourism and educational programs.

15 JULY 2020

Rob Weltman
ReTree Hawai'i
info@retree-hawaii.org

Dear Rob Weltman,

This is a letter of support for your endeavor, ReTree Hawai'i, from the Sustainable Tourism Association of Hawai'i.

Let's face it, nature needs us! And, of course we need nature and wild places to stay wild. We loudly applaud your project to try bring more native trees to our beautiful island home. The world deserves many, many more caring people like you who not only want to make a positive difference, but actually put the effort into making your vision happen.

We realize all too much the challenges of achieving conservation goals, especially during these uncertain times. We hope this letter somehow assists you in assisting to make this a successful project. Please feel free to pass along this letter to whomever may be helpful. We're looking forward to the event!

Mahalo,

A handwritten signature in black ink that reads "Cheryl S. King".

Cheryl S. King, MSc.
Sustainable Tourism Association of Hawai'i
Program Assistant
(808) 800-3531
communications@sustainabletourismhawaii.org
www.sustainabletourismhawaii.org

Re: Support Letter for ReTree Hawaii planting event October 30?

From: **Taylor Marsh** | nativeoahu@gmail.com

Thursday, Jun 25, 11:54 AM

To: **ReTree Hawaii** | robw@worldspot.com

Aloha Rob, so sorry for the delay.

I fully support this tree planting initiative. It is dire that Hawaii put as many resources as needed to reforest urban, agricultural, and upland areas for carbon sequestration in the face of climate change, wildfire, development, invasive species, and growing erosion problems. ReTree Hawaii is dedicated to planting large numbers of native plants and trees to perpetuate native species in the landscape which can have a positive impact on the economy, culture, and marine health. Native Ecosystem Services LLC offers to assist this initiative by donating native trees for planting on the island of Oahu.

Please feel free to contact me at anytime.

Mahalo,
Taylor Marsh

--

Taylor Marsh
Pu'u O Kona Native Nursery and Seed Bank
Native Ecosystem Services LLC
www.nativeecosystemsolutions.com
(808) 469-9432

From: **M ReTree Hawaii** | info@retree-hawaii.org

Wednesday, Jun 24, 3:20 PM

Lā Ho‘oulu
Pae Moku



ReTree
Hawaii

October 30, 2020

Letter of support for ReTree Hawaii?

Aloha mai e Tyler Marsh,

Any chance you can send a brief email today supporting the event?

Many of the organizations participating in the state-wide planting day October 30 this year will be providing their own plants. Your organization may be one of them. Others, particularly schools, are not able to do that so ReTree Hawaii is fundraising to cover the costs of plants where needed. An important part of the fundraising plan is applying for public and private grants. To help show community support and involvement (and thereby increasing the likelihood of raising the funds we need), we request that you send us (info@retree-hawaii.org) a letter of support for the campaign. If you can do that on Native Ecosystem Services stationery, all the better.

If you have any questions about this request for a letter of support, please don't hesitate to contact us at the email address below.

Me ke aloha,
Rob Weltman

Learn more at:

<https://retree-hawaii.org>

Please reply to:

info@retree-hawaii.org



BOARD OF DIRECTORS

Scott R. Wilson
President

Jonathan Sudler
Vice President

Kathleen Bryan
Treasurer

Elizabeth OSullivan
Secretary

Lowana Richardson
Branch Representative

Mimi Bornhorst Gaddis
Advisor, Nominating Chair

Cheryl Langton, Advisor

Directors:

Joan Gossett

Eric Hansen

Christian Palmer

Jennie Peterson

BRANCHES

Hawai'i

East Hawai'i

Kona

Waikoloa

Waimea

Kaua'i

O'ahu

East Honolulu

Kane'ohe

Lani-Kailua

Mānoa

North Shore

Waikiki

STAFF

Winston Welch
Executive Director

Jacqueline Wah
Operations Director

Myles Ritchie
Programs Director

Helping to keep Hawai'i
clean, green, and beautiful
since 1912

June 25, 2020

RE: ReTree Hawaii October 30, 2020 Planting Event

To Whom It May Concern:

The Outdoor Circle has been keeping Hawaii clean, green and beautiful since 1912. A core component of this work has been to not only plant trees throughout the state, but also working with others to promote environmental education to members of the community.

The efforts that will be undertaken on October 30th, 2020 to help replant Hawaii is one that The Outdoor Circle fully supports and based on the current list of organizations participating, we feel that this could be the beginning of a much needed renaissance in support of trees. Through planting initiatives such as this, ecosystem services (carbon sequestration, pollution removal, energy savings, reduction of the heat island effect), biodiversity (increased habitats and number of flora and corresponding fauna) and anthropogenic (psychological and physiological) benefits will be seen.

For the aforementioned reasons, we fully support the ReTree 2020 project and hope that many other events such as this arise in the future which will be supported by the public, government agencies and private corporations.

Should you have any comments, questions or concerns, please feel free to contact us.

Sincerely,

Myles Ritchie
Programs Director

1314 S. King Street #306 | Honolulu, Hawai'i 96814

T: 808-593-0300 | mail@outdoorcircle.org | www.outdoorcircle.org



Spencer Kashiwa
Field Operation Manager
Kōke'e Resource Conservation Program
January 19, 2022

Rob Weltman
Chief Organizer
Lā Ho'oulu Pae Moku- ReTree Hawai'i
info@retree-hawaii.org
<https://retree-hawaii.org>

Subject: Letter of support for the ReTree- Hawai'i, State-wide planting campaign

To whom it may concern,

The purpose of this letter is to support the ReTree- Hawai'i campaign 2022-2023 with the increasing of previous efforts for tree planting activities throughout the State of Hawai'i.

As participants in the 2020-2021 campaign, the Kōke'e Resource Conservation Program (KRCP) was a part of a coordinated large-scale planting project, adding greater significance and purpose to an individual planting project. KRCP hosted a planting project in the native forests of Kōke'e, Kaua'i and due to the coordination of the ReTree- Hawai'i campaign, staff members were able to participate in another hosted planting project.

This project serves multiple purposes that benefits the environment and the communities of the islands. With the substantial planting project by the ReTree campaign, will help combat climate change on a global scale, aid in forest restoration projects, and provide the aesthetics and other beneficial results in public and private areas. The multiple planting projects provide opportunities for the public to participate, network, and connect to the lands of their community. Having an organized and State-wide campaign increases the outreach and will draw greater attention to the cause and need for a campaign such as ReTree- Hawai'i.

The future funding for this project will benefit the islands by contributing to previous efforts and provide the future owners of the islands with what they will need. Balance is needed in Hawai'i and the world, this ReTree- Hawai'i campaign aims to harmonize the communities to the lands to which they belong to.

A handwritten signature in black ink, appearing to read "SKashiwa".

Spencer Kashiwa
Field Operation Manager
Kōke'e Resource Conservation Program



WAIMEA VALLEY

HI'IPAKA LLC

January 20, 2022

To: Rob Weltman, Re Tree Hawaii

From: Richard Pezzulo, Executive Director Hi'ipaka, LLC

Aloha,

This letter is in support of the Re Tree Hawaii state-wide planting campaign. We are a participant providing both tree nursery facilities and conservation land for native reforestation. We support the efforts of Re Tree Hawaii to plant trees using community volunteers. We are an organization that can help to organize and implement these events in support of Re Tree Hawaii's goals and objective outcomes.

Hi'ipaka, LLC is a not for profit organization whose mission is to: Preserve and perpetuate the human, cultural and natural resources of Waimea of generations through education and stewardship. We are committed to pono land stewardship and native reforestation of our of our mauka property.

Sincerely,

Richard Pezzulo,

Executive Director

To whom it may concern,

I am a 4th grade teacher at Kula Elementary School in Maui Hawai'i. Retree Hawai'i gave all the 3rd and 4th grade students at our school the opportunity to connect their learning of native plants into an opportunity to take action in their community. Through the generosity of Retree Hawai'i we were able to plant and distribute 30 native plants on our school campus. This made the learning meaningful for my students and will give them something to remember for years to come.

Thank you,

Brit Oliphant



Wednesday, January 19, 2022

State of Hawaii
RE: ReTRee Hawaii

To Whom It May Concern:

Please accept this letter of support for the ReTree Hawaii program. As the Adolescent Program Director at Montessori School of Maui (MOMI), I have and will continue to make ReTree an important curriculum piece every Autumn.

This year we were grateful to plant, among several varieties, nearly fifty trees across our nine-acre campus. Students were involved in all aspects of site sourcing, soil analysis, plant research, plant request, plant pick up, planting, documentation, and MOMI community education/promotion.

Sustained and additional funding will enable continued learning and stewardship among our keiki. Thank you very much.

Warmly,

A handwritten signature in black ink that reads "Jeffrey Friedman". The signature is fluid and cursive.

Jeffrey Friedman
Program Director & Lead Guide
Montessori School of Maui Middle School



WAIMEA VALLEY

Hi`ipaka LLC

November 03, 2021

To: North Shore Land Trust, Tim Tybuszewski

RE: Invoice Plant Purchase

50 plants at \$6 each
(mix of Ohai, Ohelo kai and Ilima)

Grand total: \$300

Payment is due to Hi`ipaka LLC.
Thank you for preserving the beautiful North Shore.

Malama,
Hinano Tangaro



Pōhāhā I Ka Lani

P.O. Box 412
Kurtistown, HI 96760

January 19, 2022

TO: House Committee on Finance and Senate Committee on Ways and Means
FR: Kūlia Kauhi Tolentino-Potter, President of Pōhāhā I Ka Lani

RE: Grant-in-Aid for Pōhāhā I Ka Lani

Aloha mai kākou,

Mahalo nui for providing such opportunities for wonderful organizations such as ReTree Initiative, to apply for funding to further their great work.

We have had the privilege to partner with ReTree Initiative for two years now along with many other nonprofits working to Ho'oulu our native forests. There were opportunities on each island for community members to come forward and volunteer to do their part in helping this great cause. It is through organizations such as this, that Hawai'i stands a great chance in doing its part to save honua. As it is in hopes that through these efforts many will become inspired and the hana maika'i continues.

It is an honor to be writing this letter of support for such a wonderful organization.

Me ka ha'aha'a a ka 'o ia 'i'o,

Kūlia Kauhi Tolentino-Potter



University of the Nations

Youth With A Mission
Kona, Hawaii

January 20, 2022

To Whom it May Concern,

The University of the Nations has been proud to participate in the campaign of ReTree Hawaii to plant trees across the state. We support and recommend this valuable program.

Sincerely,

A handwritten signature in blue ink that reads "V. Byrd Jr.".

Vernon Byrd
Head of Department
College of Science and Technology

7s-s851 Kuakini Highway · Kailua-Kona, Hawaii 96740-2199 · USA
Phone: 808-326-7228, 326-4400 · Fax: 808-329- 2387 • <http://www.uofnkona.edu>

