

Application Submittal Checklist

- ✓ 1) Certificate of Good Standing of Organization
- ✓ 2) Declaration Statement
- ✓ 3) Verify that grant shall be used for a public purpose
- ✓ 4) Background and Summary
- ✓ 5) Service Summary and Outcomes
- ✓ 6) Budget
 - a) Budget request by source of funds ([Link](#))
 - b) Personnel salaries and wages ([Link](#))
 - c) Equipment and motor vehicles ([Link](#))
 - d) Capital project details ([Link](#))
 - e) Government contracts, grants, and grants in aid ([Link](#))
- ✓ 7) Experience and Capability
- ✓ 8) Personnel: Project Organization and Staffing

Joseph A Hagedorn, Founder

Jan 21, 2022

AUTHORIZED SIGNATURE

PRINT NAME AND TITLE

DATE



Youth Knowledge Project

2023 World Conference For Youth Leaders In Agriculture

Grant Application Submittal

Fiscal Year 2023 (July 1, 2022 to June 30, 2023)

Date: Jan 21, 2022

Submitted By: 'Āina Design Corp. A 501(C) non-profit

URL: <https://www.ainadesign.org>

Signed: _____

Name: Joseph A. Hagedorn, Founder

Enclosed: Checklist, Certificate of Good Standing, Original Application

DCCA State of Hawaii

Downloaded on December 10, 2021.

The information provided below is not a certification of good standing and does not constitute any other certification by the State.

Website URL: <http://hbe.ehawaii.gov/documents>

Business Information

MASTER NAME	AINA DESIGN CORP.
BUSINESS TYPE	Domestic Nonprofit Corporation
FILE NUMBER	247254 D2
STATUS	Active
PURPOSE	- PROVIDE NETWORK DESIGN AND SUPPORT FOR COMMUNITY-BASED PLANNING - PROVIDE PLANNING, DESIGN, AND TECHNICAL DELIVERABLES FOR COMMUNITY SCALE FOOD AGGREGATION HUBS AND RESOURCE MANAGEMENT CENTERS. - DEVELOP SMART FOOD SYSTEMS THAT TARGET SMALL SCALE FARMERS AND VALUE ADDED PRODUCERS TO ENSURE FOOD QUALITY, TRACEABILITY AND SAFETY TO END CONSUMERS - PROVIDE PROJECT MANAGEMENT IN ACTIVE LEARNING AND ECOLOGICAL RESEARCH SITES - SALES OF PLANT BASED PRODUCTS WITH PROOF OF REGIONAL ORIGIN(S)
PLACE INCORPORATED	Hawaii UNITED STATES
INCORPORATION DATE	Jan 6, 2015
MAILING ADDRESS	1105 ULUOPIHI LOOP KAILUA, Hawaii 96734 UNITED STATES
TERM	PER
AGENT NAME	UNITED STATES CORPORATION AGENTS, INC.
AGENT ADDRESS	1003 BISHOP ST STE 2700 HONOLULU, Hawaii 96813 UNITED STATES

Annual Filings

FILING YEAR	DATE RECEIVED	STATUS
2021	Mar 18, 2021	Processed
2020	Jan 9, 2020	Processed
2019	Apr 8, 2019	Processed
2018	Jan 2, 2018	Processed
2017	Jun 5, 2017	Processed
2016	Sep 22, 2016	Processed

Officers

NAME	OFFICE	DATE
HAGEDORN,JOSEPH	P/D	Jan 1, 2016
HERMANN,KIEFER	V/PLANT RESEARCH	Jan 1, 2020

GOMEZ,LARRY	T/S/OUTREACH DIR.	Jan 1, 2020
KEALOHA,WILLIAM	D/VA PROGRAM DIR	Jan 1, 2020
WALKER,BRIAN	D/EDUCATION DIRECTOR	Jan 1, 2020

Public Purpose

‘Āina Design Corp. submits this application for grant in aid in accordance with **§42F-102 Applications for grants** objectives to provide a tiered platform as a service (PAAS) to the public and members of regenerative farm communities.

PAAS Development Basis:

1. Land Planning and Design based on ecological and environmental factors in response to Hawaii’s 2050 Sustainability Plan¹ focused on climate strategies that also ensure food and fuel security for the long term period of adjustment expected.
2. General health and wellbeing of our public via a consistent and reliable supply chain system with deep support for farm source verification and food systems and data driven labeling.
3. Professional workforce development planned collaboratively with our local school system based on planned future agribusiness goals extending learned experience as a practical means for gaining qualified experience.
4. Deep research and analysis support for community based food and regenerative agriculture projects featuring youth leadership engagements both here and abroad to assist current efforts in knowledge based economic development.

¹ <https://www.un.org/sustainabledevelopment/sustainable-development-goals/>

Declaration Statement

Aina Design Corp. has been structured to leverage information management systems to minimize administrative costs and burden for ourselves and small farm operators. Board Membership is voluntary but members may engage in public or community projects under compensatory arrangements as organizational representatives within acceptable and ethical standards.

Aina Design Corp. is submitting for grant in aid for fiscal period 2022-2023 in accordance with **§42F-103** Standards for the award of grants.

Aina Design Corp. was formed to provide services in support of community-based food-focused projects. Work deliverable includes but not limited to the following:

- Information systems and digital infrastructure planning for asset tracking, data acquisition and remote sensing.
- Planning and design of modular support equipment and facilities for agricultural production sites.
- Development of outdoor learning spaces including A/V and conferencing integrated devices.
- Planning and design of agricultural support systems related to the conveyance and storage of raw materials
- Equipment specifications of agricultural support equipment including smart systems and logic used to support operational and maintenance control features
- Smart systems integration for food product traceability

Our work ethics and policies prevent discrimination against any person on the basis of race, color, national origin, religion, creed, sex, age, sexual orientation, or disability.

We constantly work to improve internal workflows and are actively developing automated systems to ensure financial accountability during the course of primary work activities related to project management and program fulfillment.

EIN: 32-0466202

Background and Summary

‘Āina Design Corp fosters relations between urban and rural agricultural communities. We assist our small farm and value added producer communities through a proposed digital platform meant to simplify and minimize their efforts needed to rebuild then cooperatively manage our local supply chain systems. We help to prepare tomorrow's smart agriculture workforce by addressing climate dynamics through spatial data and place based knowledge. Our current efforts focus on developing strategic alliances with key educational partners and community leaders to model moku-based learning methods for community based projects and augment outdoor class options for youth leadership training. We work closely with STEM educators to empower and give voice to our youth generation passionate about climate issues who actively engage in researching and implementing potential solutions through school and community service projects.

Ongoing program development is a collaborative effort meant to accelerate the integration and implementation of place based knowledge networks principled on relating the needs of community based projects with digital resources as a proactive improvement to our government information services platforms. Continuing with a common theme of youth training and career development, we look forward to closely working with ‘Āina Mahi’ai and The Hamakua Group to extend our “Greenthumbs Youth Knowledge” programming serving community based projects.

Partner Backgrounds

‘Āina Mahi’ai transforms big ideas from small communities into actionable projects tailored to small farm holders in order to train and create opportunities for long-term personal growth and professional development. Their core service to farm communities is conceptualizing then planning how a single-family home and/or farm dwelling built on Ag-2 or preservation land can successfully model an active learning environment that cares for the land while providing incentives for specialty crops and plant based product development beneficial to the surrounding community. ‘Āina Mahi’ai provides a safe, healing, action-based learning environment introducing their current program development promoting

healing of the land and people through lifestyle decisions and exposure to the cultivation of Hawaiian Heritage plants.

The Hamakua Group works closely with community planning groups on advanced topics related to the “Natural Solutions” available through environmental preservation and the technology of carbon sequestration, i.e., limiting climate change and its disruptions. Today’s sensitive ecosystems can be part of these solutions rather than only victims of development. The Group is currently implementing a system of real-time environmental data collection and dissemination to serve the public’s well-being and professional decision making. Furthermore, it views our current mundane recycling system as ripe for innovative improvement.

Shared Project goals and objectives

Combined, we vision a Hawaii committed to agricultural product development and innovation by recognizing the importance of cultural and place based qualities that contribute to grown and made in Hawaii initiatives. Past agricultural practices steeped in our rich history provides a baseline and goal for us to improve and streamline our current farm methods emphasizing soil and water quality and implementation of zero waste methods to protect the health of our lands and citizens. Our proposed activities are based on place-based and active research processes where caring for and cultivating seasonal growth in our `aina involves acknowledgement of Hawaii’s past successes in systems based (moku) land planning and development. As we collect data and knowledge from others we incorporate a period of collaborative review for improvement including discussion of new technologies conducive to moku systems planning and supply chain workflow development. The field of data science provides a strong foundation for us to reflect and actively integrate from past land development efforts while designing and implementing new data driven technologies guided by conservation and zero waste principles.

Primary Long Term Goal: Provide work opportunities to project participants in efforts to design, test, and implement smart agriculture and related information technologies that convey quality standards and traceability for small regenerative farms engaged in value added product development.

Our objective is to define and demonstrate future self-service digital information systems for small farmers in order to close gaps in communication starting with local supply chain source verification. Increasing access to authoritative digital information has the potential to replace pen and paper monitoring and reporting

methods required by regulatory agencies leading to real time analysis and reporting.

Secondary Medium Range Goal: Develop operational and maintenance apps for farm owners and operators seeking practical methods for farm source verification required by food safety preventive control measures. Our objective is to develop practical standards and implementation methods for our local food supply chains in response to negative impacts of climate change to our environment and island ecosystems.

Immediate Goals:

1. Document current land conditions (empirical knowledge) with partner agencies and community experts capable of addressing changes to environmental conditions through personal recollections and cultural artifacts.
2. Develop a digital land planning toolkit for implementing best practices offered at no cost to farms who commit to regenerative farming standards and practices..
3. Work cooperatively with a small group of farmers, landowners and operators, and value added producers to show proof of concept for preserving and protecting Hawaii grown and made plant based products through smart agriculture technologies. A verified farm to informed retail model will be used in this effort.
4. Develop two outdoor field offices and home base for hosted learning and sharing sessions where media content is created and accessed as Content As A Service (CAAS) as part of development efforts for our Mokunet (PAAS).

Public purpose and needs served

Since roughly 90% of agricultural lands in Hawaii are today operated by small farm holders, our program design focuses on serving family owned and minority farmers who have provided us valuable insight into their operations and are concerned about increasing costs and regulatory requirements for food safety and best practices. These families and minority operated farms are interested in value added services that can offer potential revenue. We plan to serve their needs now by developing a prototypical supply chain framework as a result of

collaborative efforts with other place-based community organizations concerned with our local food systems.

Steps to fulfilling needs of existing community food focused projects:

1. Target our current collaborative research efforts to support and provide real world data to future agribusiness planning models in Hawaii needed to connect farm sources to value added producers through highly automated and locally managed supply chains.
2. Develop standards of technical proficiency for smart agricultural workforce development to enable smallholder and small farm's ability to hire trained seasonal workers including those with professional skills.
3. Formal acknowledgement of cultural and historical knowledge through existing community groups and leaders who provide holistic thinking to seasonal, place based projects and community development.

Focused populations to be served

Small Farmholder Businesses

Agricultural community of small regenerative farms and specialty crops working together to ensure zero-waste throughout our combined operations through new product development.

Local community food hubs

Farm product innovation traceability offered to community food hubs.

Sustainability Planning Agencies

Applied research into zero waste farm methods and local supply chain management contributes to our sustainability plan by treating all agricultural residuals as a viable nutrient source for disaster planning scenarios

Geographic coverage of moku systems testing (PHASE1).

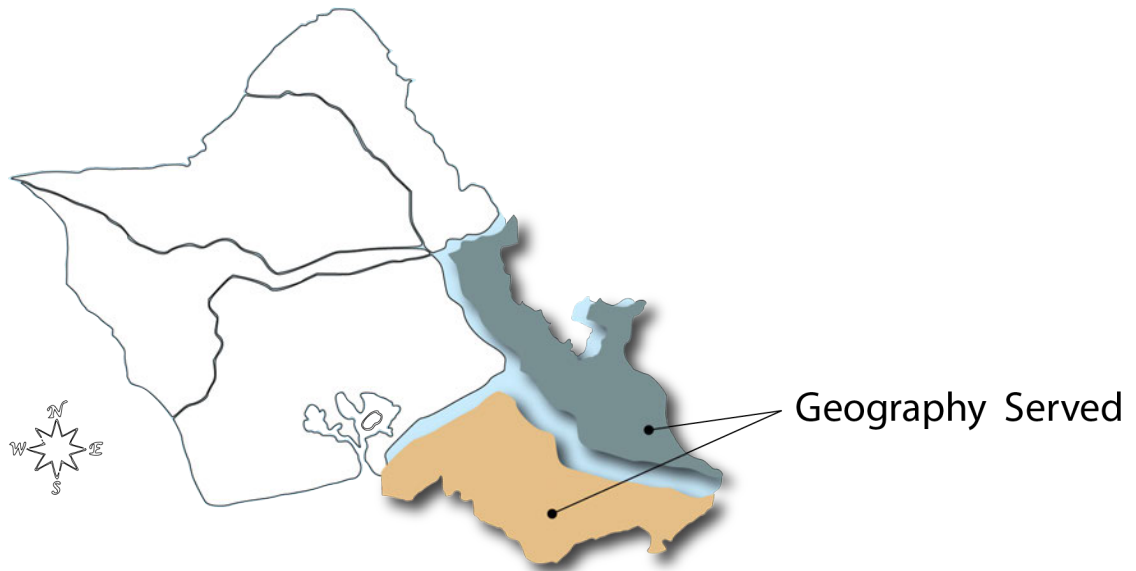


Figure 1. Map of Oahu agricultural/agribusiness communities served

Ko olaupoko

Food Focused Projects

Kona

Urban Agriculture and Plant Based Food Innovations

Site of Annual Youth Led Conference

Service Summary and Outcomes

Supporting individual small farm operations through aggregated and coordinated strategies is essential to scaling our diversified agribusiness communities to better fit our Island based economy. The target and beneficiary of this project are the most vulnerable yet critical member of this community, our small farm holders and operators. Therefore, our project approach towards funding will seek ways to research, implement, and train others for their roles as professional farmers, conservationists, environmentalists, and entrepreneurs as active participants of our diversified agribusiness community. Through past experience, we understand higher operating and maintenance costs in Hawaii translates to less innovation and plan to apply regenerative farm methods that lead to zero waste through new product upcycling initiatives. For now, our main goal is to limit our project scope towards the design, testing and deployment of smart agricultural methods that will prescribe best practices and standards for local supply chains starting from farm source supply verification. Work scope

deliverables will provide an important baseline for self monitoring and reporting in accordance with the food safety and modernization act (FSMA) whereby State and Federal inputs are actively considered. We expect that consumer trends and preferences will lean towards those who prove a commitment to both public health and the health of our lands and environment. Hawaii may indeed lead on this marketing front. The use of digital technologies that accurately convey Hawaii's commitment to quality, biodiversity, and appreciation of culture is critical to our competitive goals as an isolated island economy.

Primary Task	SubTask/Activity	Responsibility
Professional Development and Field Support		
	Form core partnership with Chaminade University and St. Louis High School data sciences programs	'Āina Design Corp
	Survey other educational partners for potential on-site participation	'Āina Mahi'ai / 'Āina Design Corp
	Develop topics for Ag-2 and Preservation sites relevant to Kaneohe and Waimanalo training sites	'Āina Mahi'ai / 'Āina Design Corp
	Workshop planning and development	'Āina Mahi'ai / 'Āina Design Corp
	Specialty crops, rotational crop, and	'Āina Mahi'ai

	seasonal planning workshop development	
	Coordinate and schedule community experts for on-site training covering seasonal topics	'Āina Mahi'ai
	Content As A Service (CAAS) Development	'Āina Mahi'ai
	Hire 1 CTAHR graduate students for P/T for workshop planning development	'Āina Mahi'ai
	Hire 1 GIS graduate students for P/T remote work for digital modeling and app integration	'Āina Design Corp
Establish Kaneohe Field Office		
	Field Office setup and staff organization	'Āina Mahi'ai
	Outdoor class area established for general survey and inspection workshops	'Āina Mahi'ai / 'Āina Design Corp
Establish Waimanalo Field Office		
	Field Office setup and staff organization	'Āina Design Corp

	Weather and multipurpose data acquisition station installation, calibration and functional testing	The Hamakua Group
	Outdoor class area established for field inspections and test methods for soil and water	‘Āina Design Corp / The Hamakua Group
	Workshop Planning and Development	‘Āina Design Corp / The Hamakua Group
	Hire 2 Field Managers	‘Āina Design Corp
Land Survey and Inspection Toolkit Development		
	Engineering Specifications For Digital Toolkit	‘Āina Design Corp
	Site Inspection and Survey App Development	‘Āina Design Corp
Outdoor Class Network Design Infrastructure		
	Remote access planning and design	‘Āina Design Corp
	Initial preparation	‘Āina Design Corp

Cloud Platform Service Development (PAAS - Platform As A Service)		
	Site Resource Traceability and Local Supply Chain Workflow Development	'Āina Design Corp / The Hamakua Group
	Resource Management Dashboard Prototype	'Āina Design Corp
	FSMA Planning For Prototypical Farm Source Verification	'Āina Design Corp
Cloud Content As A Service Development (CAAS - Content As A Service)		
	Place-based content development	Āina Mahi'ai

Table 1

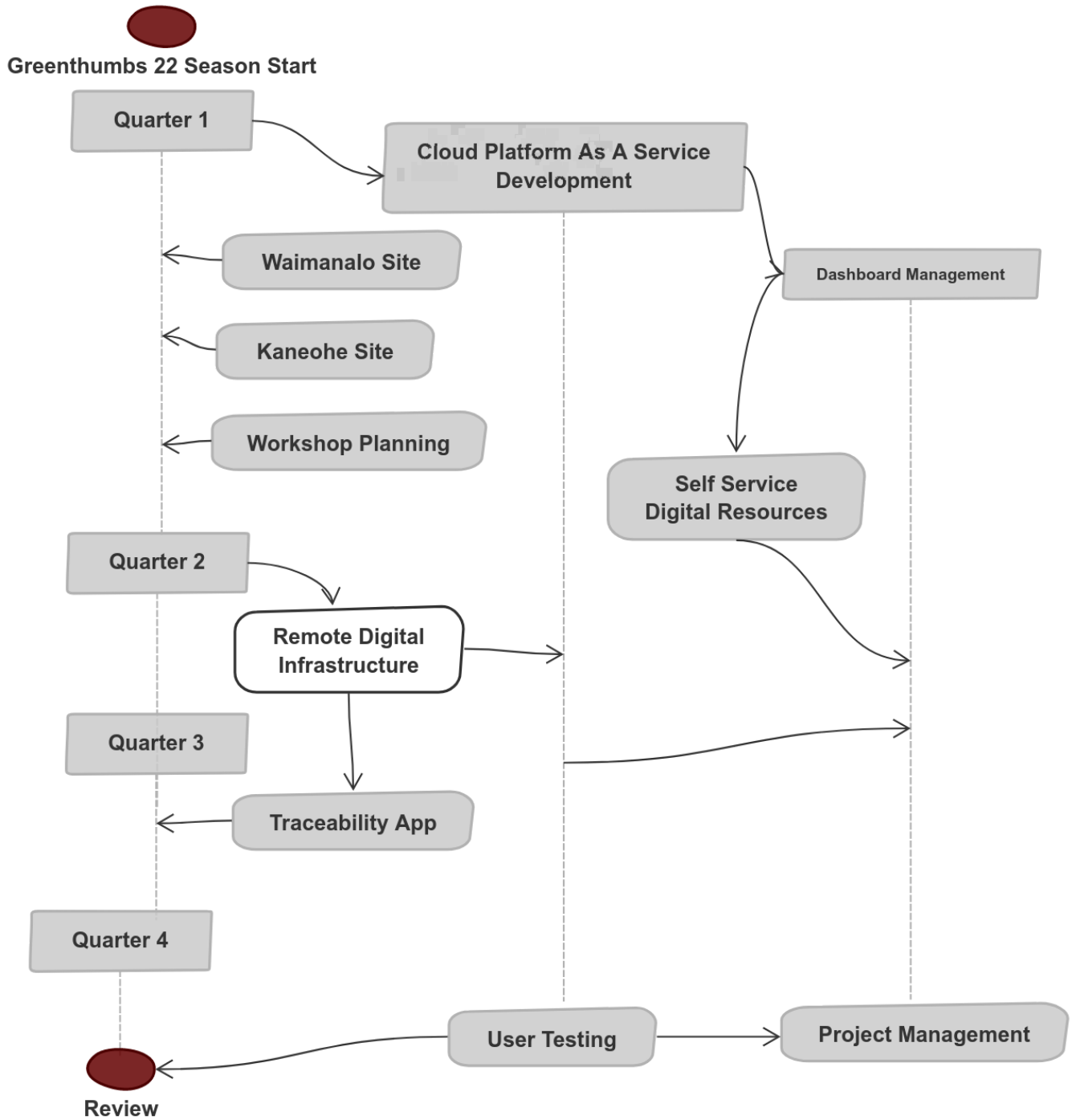


Fig 2. Project Annual Timeline

Table 2. LOGIC MODEL			
Inputs	Task / Activity	Outputs	Outcomes - [Level of Detail] (see Note 2)
Funding	Collaborative Educational Programming	Kaneohe Field Office as Multipurpose Space	Closer ties between our professional and educational communities [3]
Collaborators	Alternative Learning and Outdoor Class Development	Waimanalo Field Office as Real Time Learning Spaces for Applied Research	Remote learning, including enhancements to place based knowledge [3]
Strategic Partners Project Staff	Workshop Planning and Development	Coordinated Community Service Events As Practiced In Waimanalo and Kaneohe	Community service incorporated into outdoor class experiences [3]
Topic Experts	Workshop Scheduling	Alternative Educational Curriculums For Professional Development	Project based professional development for students desiring to be employed in their communities
Self-directed learners	Office As Outdoor Classroom Development		Improvement to current information management systems [1]
Project Participants	Cloud Content As A Service (CAAS)	Youth Leadership Mentorship	Streamlining regulatory and monitoring policies for land activities [1]
	Cloud Platform	Knowledge Networks	Prototyping and proof-of-concept of self service government [1]
			Connecting distributed data sources to streamline digital services to end users [1]
			Increase awareness of the connection of land and public health [2]

<p>Hardware and Network Devices, Instruments, and Equipment</p> <p>Software and Cloud Service Licensing</p>	<p>As A Service (PAAS)</p> <p>Digital Infrastructure</p> <p>Real Time Dashboard Management</p>	<p>Data Sources and Cloud Services</p> <p>Technical Skills Workforce Development Training</p> <p>Professional Development and Project Based Community Service</p>	<p>Equitable and fair access to digital resources [2]</p> <p>Farm source traceability digital forms standards [0]</p> <p>Low to no-cost implementation of administrative support services for small farm holders [2]</p> <p>Feedback along all communication channels as a positive incentive versus negative outcomes from unguided social media channels [5]</p> <p>Trust in Youth Leaders [4]</p>
---	--	---	--

Notes:

Level of detail is used to accurately reflect project status at any given time through our real time dashboard and provide a tracking method for project task evaluation as an ongoing process.

Our proposed logic framework uses a 0-5 scale rating as follows:

- 0 - Meet original specification and expected performance (Project scope)*
- 1 - Objective data or information acquired, classified and digitally documented (Project scope)*
- 2 - Collaborative finding incorporated into project (Project scope)*
- 3- Subjective data or information collected for immediate future use (Project scope)*
- 4 - Subjective data or information collected for review (Non-project scope)*
- 5 - Critical feedback of core project tasks (Non-project scope)*

List the measure(s) of effectiveness that will be reported to the State agency through which grant funds are appropriated (the expending agency). The measure(s) will provide a standard and objective way for the State to assess the program's achievement or accomplishment. Please note that if the level of appropriation differs from the amount included in this application that the measure(s) of effectiveness will need to be updated and transmitted to the expending agency.

Future Sustainability Plan

A youth conference will be planned for May 2023 presenting community findings as a result of their participation with us. During this conference, we plan to present our sustainability plan in the context of moku based principles and collective strategy using data driven models. The context of this planned event relates to LOCALLY GROWN FOOD in support of existing and pending farm to school grant programs administered by the State of Hawaii. Specifically, we will be working with our project participants and youth leaders to present ways that agricultural communities have approached food security while addressing compliance with requirements of the Food and Drug Administration Food Safety Modernization Act and implementation of United States Department of Agriculture good agricultural practices standards and audits.

Historically, community engagement and treatment of the land was a literal, deliberate process taken seriously by all inhabitants of a particular location and region. Interconnected regions (Moku) defined a greater physical land mass to which its inhabitants played an integrated role as land stewards. Ecology based planning was and still is an “everyone’s business” system of roles and responsibilities and in effect, a person-centric conservation planning framework. Communities, regardless of socio-economic class, need to reestablish themselves and engage with land planning efforts centered on ecology as a response to climate effects that demand everyone’s attention to their role as land stewards.

J. Hagedorn
Founder

Financial

Budget

1. Budget utilizing the enclosed budget forms as applicable, to detail the cost of the request (See Attached)
2. See Table

Anticipated quarterly funding requests for the fiscal year 2023				
Quarter 1	Quarter 2	Quarter 3	Quarter 4	Total Grant
\$85,540.00	\$88,000.00	\$38,100.00	\$38,100.00	\$249,740

3. We will be seeking funding for years 2022-2023 from private individuals, institutions, and organizations. We also are working to secure USDA land conservation and natural resource departments as we work more closely with them on streamlining the dissemination of information to smallholder farms and lease land operators.
4. State and federal tax credits been granted within the prior three years - NONE

State and federal tax credits applied for or anticipate applying for pertaining to any capital project. - N/A
5. Federal, state, and county government contracts, grants, and grants in aid granted within the prior three years and will be receiving for fiscal year 2023 for program funding - NONE
6. Balance of its unrestricted current assets as of December 31, 2021. - N/A

Experience and Capability

Skills and Experience

Based in Hawaii, Aina Design Corp. was formed in 2017 as a 501(c) non-profit by a small group of individuals concerned over issues related to small farms and the role they play in diversified agriculture. Over these years, we have interviewed many small farmers in Waimanalo who have offered worthwhile suggestions to improve the effectiveness of agribusiness activities in Hawaii. Through our educational and professional backgrounds, we offer planning, design, and technical services for small scale regenerative farm-site operators looking for ways to combine value added production into their operations. Founders consists of a design engineer and environmental sciences graduate working closely with a small staff of former agricultural workers with practical experiences in agricultural field inspection as well as small nursery operations. We are currently developing our cloud services infrastructure and plan to share our work as we build close ties with small farmholders accessing rich knowledge and live datasets.

We have successfully engaged in targeted community outreach designing and implementing an outdoor class environment several years ago unaware that outdoor class experiences and place based learning will be a necessary component to Hawaii’s educational landscapes today. Outdoor learning is our current development focus to bridge research and design communities with educators who provide hands-on experiences to their student learners. With our combined past experiences in the AEC industry, product design, release engineering and smallholder agriculture in Hawaii, we plan to assist in preparing a high-skills agricultural workforce in Hawaii through our action-based Greenthumbs program.

Memberships and Certifications:

- American Society for Testing and Materials (ASTM)
- Member of Industry IoT Consortium
(<https://www.iiconsortium.org/cgi-bin/iicmembersearch.pl>)
- TraceAlliance for information governance and blockchain contract specifications (<https://alliance.origintrail.io/members>)

Food Safety Preventive Controls Alliance Course Certification: #5990c0e3
Federal Cage Code: 7WCD4
GS1 Company Prefix: 08600041124

Facilities

Facilities are based on current access to Ag-2 and Preservation zoned parcels and properties planned for modifications to host outdoor classes capable of remote connectivity. Other facilities may include use of property or facilities for educational purposes owned or leased by others. The latter case may (at a future time) involve temporary or short term lease agreements. Lastly, we plan to procure specialized equipment requiring modular, secure storage and transportable.

Personnel: Project Organization and Staffing

1. Proposed Staffing, Staff Qualifications, Supervision and Training

Proposed staffing is based on a seasonal schedule lasting a full year where project participant’s roles and responsibilities are applied. At minimum, a field manager will coordinate the daily or weekly staff schedule throughout the lifetime of any single core project. A minimum lifetime of a core project is one year. Partnered groups are required to fulfill each event or topic session as part of a pre-established schedule.

Table 3. Basic Personnel Scheduling		
Program Session	Fieldwork or Mobile Site	Partner Support
Fall	Manager	Educator Topic Expert (e.g. soil, water, plant disease)
Spring	Manager	“
Summer	Manager	“
Winter	Manager	“

2. Organization Chart

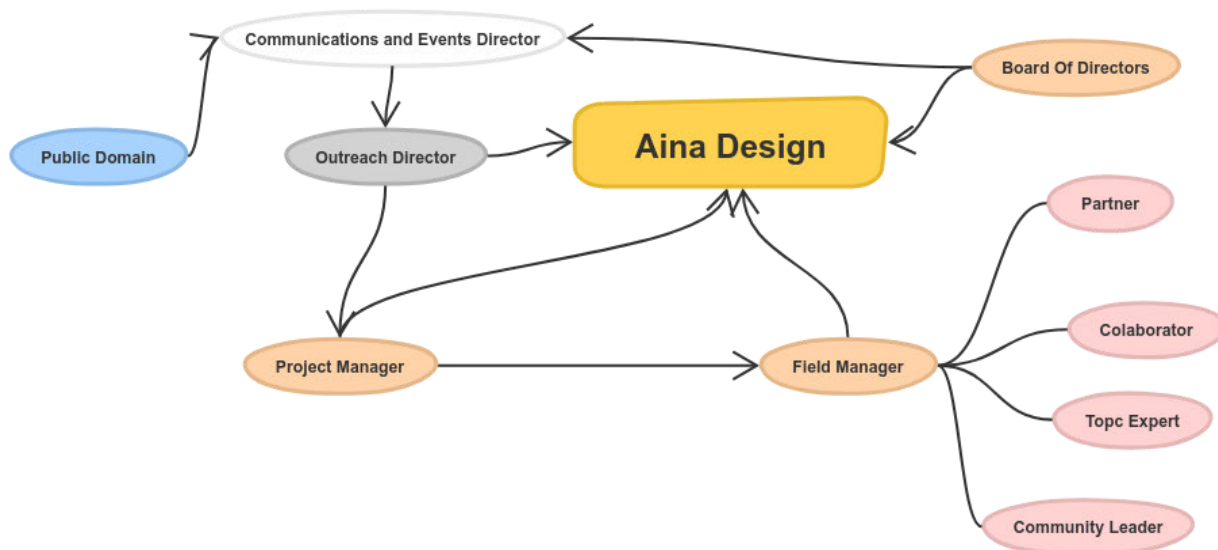


Fig 3. Organizational Chart

3. Compensation

Fundraising is designed to maximize financial resources towards direct costs impacting benefits to the small farm community. Other financial incentives are being developed such as student loan forgiveness programs.

Salary Range of Staff:

1. Project/Program Manager(s) Salary Range 60-85k/year
2. Outreach Director / Manager 50-65k/year
3. Communications and Events Director 50-65k/year

Other

1. **Litigation (N/A)**
2. **Licensure or Accreditation**

FSPC - Food Safety Preventive Controls
FSPCA Tracking ID: #5990c0e3

3. Private Educational Institutions

Partnered support for STEM and Data Sciences Program and Curriculum through collaborative means with:

Ko olaupoko Moku

Kahaluu Key Project (private)

Kona Moku

Chaminade University (private)

Saint Louis High (private)

BUDGET REQUEST BY SOURCE OF FUNDS

Period: July 1, 2022 to June 30, 2023

Applicant: Aina Design Corp.

BUDGET CATEGORIES	Total State Funds Requested (a)	Total Federal Funds Requested (b)	Total County Funds Requested (c)	Total Private/Other Funds Requested (d)
A. PERSONNEL COST				
1. Salaries	102,500			
2. Payroll Taxes & Assessments	11,700			
3. Fringe Benefits	N/a			
TOTAL PERSONNEL COST	114,200			
B. OTHER CURRENT EXPENSES				
1. Airfare, Inter-Island	N/a			
2. Insurance	4,200			
3. Lease/Rental of Equipment	0			
4. Lease/Rental of Space	24,200			
5. Staff Training	0			
6. Supplies	21,100			
7. Telecommunication	7,200			
8. Utilities	0			
9. Software Licensiing	8,820			
10. Park Permits	100			
11. Contracted Services	34,000			
12. Shipping	2,000			
13. Transportation Fuel / Mileage	1,920			
14.				
15.				
16.				
17.				
18.				
19.				
20.				
TOTAL OTHER CURRENT EXPENSES	103,540			
C. EQUIPMENT PURCHASES	32,000			
D. MOTOR VEHICLE PURCHASES	0			
E. CAPITAL	5,000			
TOTAL (A+B+C+D+E)	249,740			
SOURCES OF FUNDING		Budget Prepared By:		
(a) Total State Funds Requested	249,740	Joseph Hagedorn (808) 306-5068		
(b) Total Federal Funds Requested		Name (Please type or print) Phone		
(c) Total County Funds Requested		Signature of Authorized Official Date		
(d) Total Private/Other Funds Requested		Joseph A. Hagedorn, Founder and Program Director		
TOTAL BUDGET	249,740	Name and Title (Please type or print)		

Applicant: Aina Design Corp,

FUNDING AMOUNT REQUESTED						
TOTAL PROJECT COST	ALL SOURCES OF FUNDS RECEIVED IN PRIOR YEARS		STATE FUNDS REQUESTED	OTHER SOURCES OF FUNDS REQUESTED	FUNDING REQUIRED IN SUCCEEDING YEARS	
	FY: 2020-2021	FY: 2021-2022	FY:2022-2023	FY:2022-2023	FY:2023-2024	FY:2024-2025
PLANS			0			
LAND ACQUISITION			0			
DESIGN			0			
CONSTRUCTION			0			
EQUIPMENT			32000			
TOTAL:			32,000			
JUSTIFICATION/COMMENTS:						
Soil quality farm metric for Farm Source Verification						

Applicant: Aina Design Corp.

DESCRIPTION SPECIALTY SUPPLIES	NO. OF ITEMS	COST PER ITEM	TOTAL COST	TOTAL BUDGETED
Ruggedized Tablet	2.00	\$700.00	\$ 1,400.00	1,400.00
Modular Weatherstation (110-WS-25N Novalynx)	2	\$3,400.00	\$ 6,800.00	6,800.00
DJI Drone (Inspire Video System)	1	\$3,300.00	\$ 3,300.00	3,300.00
Small Lab Refrigerator (LabRepCo 2.5 ft3 undercounter)	1	\$1,400.00	\$ 1,400.00	1,400.00
PPE Kits (Hard Hat, Glasses, Vest, Gloves)	4	\$250.00	\$ 1,000.00	1,000.00
Storage Bins and Wheeled Rack	1	\$600.00	\$ 600.00	600.00
Field Boot Scrubber Station (Scrusher or equivalent)	3	\$200.00	\$ 600.00	600.00
Portable Tilt Truck (Heavy Duty Rubbermaid)	1	\$800.00	\$ 800.00	800.00
RFID Tag Assortment and Hand Held Reader (RFID Inc.)	1	\$1,100.00	\$ 1,100.00	1,100.00
Portable Barcode Printer (Zebra ZQ630 RFID MOBILE PRINTER)	1	\$2,500.00	\$ 2,500.00	2,500.00
Arborist Pruning and Soil Probing Tools	1	\$1,000.00	\$ 1,000.00	1,000.00
Tree Tagger (ARBO Tag Magazine & Bag Combo)	1	\$600.00	\$ 600.00	600.00
TOTAL:	19		\$ 21,100.00	21,100.00

JUSTIFICATION/COMMENTS:

DESCRIPTION OF MOTOR VEHICLE	NO. OF VEHICLES	COST PER VEHICLE	TOTAL COST	TOTAL BUDGETED
NONE			\$ -	0

			\$ -	0
TOTAL:				0

JUSTIFICATION/COMMENTS:

DESCRIPTION EQUIPMENT	ITEMS	COST PER ITEM	TOTAL COST	TOTAL BUDGETED
Mobile Sample Analysis Workstation (Agrocare no-wet chemistry L	1.00	\$26,500.00	\$ 26,500.00	26,500.00
5G Cellular Router	1	\$2,500.00	\$ 2,500.00	2,500.00
5G Mobile Router	1	\$1,000.00	\$ 1,000.00	1,000.00
5G Access Point Adapter	1	\$2,000.00	\$ 2,000.00	2,000.00
TOTAL:		4	\$ 32,000.00	32,000.00

JUSTIFICATION/COMMENTS:
Remote broadband for prototypical learning site (2)

BUDGET JUSTIFICATION - PERSONNEL SALARIES AND WAGES Period: July 1, 2022 to June 30, 2023

Applicant: Aina Design Corp.

POSITION TITLE	FULL TIME EQUIVALENT	ANNUAL SALARY A	% OF TIME ALLOCATED TO GRANT REQUEST B	TOTAL STATE FUNDS REQUESTED (A x B)
Project Manager / Full Stack Developer	80,000.00	\$80,000.00	50.00%	\$ 40,000.00
Farm Outreach Manager (Larry Gomez)	50,000.00	\$50,000.00	50.00%	\$ 25,000.00
Communications Marketing (Roz Souza)	50,000.00	\$50,000.00	25.00%	\$ 12,500.00
Field Services Manager (Kiefer Hermann)	50,000.00	\$50,000.00	50.00%	\$ 25,000.00
				\$ -
Intern 1 Urban/Rural Planning / GIS (TBH)				\$ -
Intern 2 Envirionmental Lab Science (Undergraduate - TBH)				\$ -
Soil Science Field Tech (Graduate Student - TBH)				\$ -
				\$ -
				\$ -
TOTAL:				102,500.00

JUSTIFICATION/COMMENTS: Internships to be offered as unpaid positions. Compensation to be later factored.

GOVERNMENT CONTRACTS, GRANTS, AND / OR GRANTS IN AID

Applicant: Aina Design Corp.

Contracts Total: -

	CONTRACT DESCRIPTION	EFFECTIVE DATES	AGENCY	GOVERNMENT ENTITY (U.S./State/Hawaii/ Honolulu/ Kauai/ Maui County)	CONTRACT VALUE
1	NONE TO DATE				-
2					
3					
4					
5					
6					
7					
8					
9					
10					
11					
12					
13					
14					
15					
16					
17					
18					
19					
20					
21					
22					
23					
24					

25				
26				
27				
28				
29				
30				