

THE THIRTIETH LEGISLATURE
APPLICATION FOR GRANTS
CHAPTER 42F, HAWAII REVISED STATUTES

Type of Grant Request:

Operating Capital

Legal Name of Requesting Organization or Individual: Db:
Re-use Hawaii

Amount of State Funds Requested: \$ 200,000

Brief Description of Request (Please attach word document to back of page if extra space is needed):
Re-use Hawai'i is requesting funding to maintain its operational capacity on Oahu, and expand its operational capacity on Hawai'i Island with the purpose of meeting the State of Hawai'i waste reduction needs and maximize the generation of affordable resources for the community. Through operational support of its two core programs on each island - Deconstruction Services and Redistribution of salvaged materials to the community as an affordable building material resource - Re-use Hawai'i will have a stronger impact, and move closer to its own self sustainability.

Amount of Other Funds Available:

State: \$ 0
Federal: \$ 0
County: \$ 0
Private/Other: \$ 1,941,608

Total amount of State Grants Received in the Past 5

Fiscal Years:
\$ 375,000
Unrestricted Assets:
\$ 661,590,86

New Service (Presently Does Not Exist): Existing Service (Presently in Operation):

Type of Business Entity:

501(C)(3) Non Profit Corporation
 Other Non Profit
 Other

Mailing Address:

200 Keawe Street
City: Honolulu State: HI Zip: 96813

Contact Person for Matters Involving this Application

Name:
Carolyn Murren

Title:
Fundraising & Communications Director

Email:
carolyn@reusehawaii.org

Phone:
808-539-8906

Federal Tax ID#:
[REDACTED]

State Tax ID#
[REDACTED]

A. Quinn Vittum
Authorized Signature

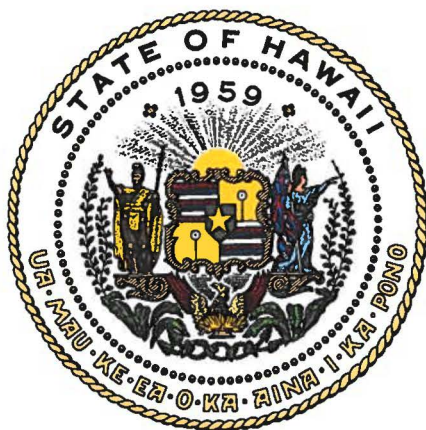
Quinn Vittum
Name and Title

Executive Director

1/16/20
Date Signed

received
01/17/2020 2:27 am

2:27 am



Department of Commerce and Consumer Affairs

CERTIFICATE OF GOOD STANDING

I, the undersigned Director of Commerce and Consumer Affairs of the State of Hawaii, do hereby certify that

RE-USE HAWAI'I

was incorporated under the laws of Hawaii on 10/10/2006 ; that it is an existing nonprofit corporation; and that, as far as the records of this Department reveal, has complied with all of the provisions of the Hawaii Nonprofit Corporations Act, regulating domestic nonprofit corporations.

IN WITNESS WHEREOF, I have hereunto set my hand and affixed the seal of the Department of Commerce and Consumer Affairs, at Honolulu, Hawaii.

Dated: January 06, 2020

Director of Commerce and Consumer Affairs



**DECLARATION STATEMENT OF
APPLICANTS FOR GRANTS PURSUANT TO
CHAPTER 42F, HAWAI'I REVISED STATUTES**

The undersigned authorized representative of the applicant certifies the following:

- 1) The applicant meets and will comply with all of the following standards for the award of grants pursuant to Section 42F-103, Hawai'i Revised Statutes:
 - a) Is licensed or accredited, in accordance with federal, state, or county statutes, rules, or ordinances, to conduct the activities or provide the services for which a grant is awarded;
 - b) Complies with all applicable federal and state laws prohibiting discrimination against any person on the basis of race, color, national origin, religion, creed, sex, age, sexual orientation, or disability;
 - c) Agrees not to use state funds for entertainment or lobbying activities; and
 - d) Allows the state agency to which funds for the grant were appropriated for expenditure, legislative committees and their staff, and the auditor full access to their records, reports, files, and other related documents and information for purposes of monitoring, measuring the effectiveness, and ensuring the proper expenditure of the grant.
- 2) If the applicant is an organization, the applicant meets the following requirements pursuant to Section 42F-103, Hawai'i Revised Statutes:
 - a) Is incorporated under the laws of the State; and
 - b) Has bylaws or policies that describe the manner in which the activities or services for which a grant is awarded shall be conducted or provided.
- 3) If the applicant is a non-profit organization, it meets the following requirements pursuant to Section 42F-103, Hawai'i Revised Statutes:
 - a) Is determined and designated to be a non-profit organization by the Internal Revenue Service; and
 - b) Has a governing board whose members have no material conflict of interest and serve without compensation.

Pursuant to Section 42F-103, Hawai'i Revised Statutes, for grants used for the acquisition of land, when the organization discontinues the activities or services on the land acquired for which the grant was awarded and disposes of the land in fee simple or by lease, the organization shall negotiate with the expending agency for a lump sum or installment repayment to the State of the amount of the grant used for the acquisition of the land.

Further, the undersigned authorized representative certifies that this statement is true and correct to the best of the applicant's knowledge.

Re-use Hawai'i

(Typed Name of Individual or Organization)

A. Quinn Vittum
(Signature)

1/16/20
(Date)

Quinn Vittum

Executive Director

(Typed Name)

(Title)

Application for Grants

If any item is not applicable to the request, the applicant should enter "not applicable".

I. Certification – Please attach immediately after cover page

1. Certificate of Good Standing (If the Applicant is an Organization)

If the applicant is an organization, the applicant shall submit one (1) copy of a certificate of good standing from the Director of Commerce and Consumer Affairs that is dated no earlier than December 1, 2019.

2. Declaration Statement

The applicant shall submit a declaration statement affirming its compliance with Section 42F-103, Hawaii Revised Statutes. ([Link](#))

3. Public Purpose

The applicant shall specify whether the grant will be used for a public purpose pursuant to Section 42F-102, Hawaii Revised Statutes. ([Link](#))

II. Background and Summary

This section shall clearly and concisely summarize and highlight the contents of the request in such a way as to provide the State Legislature with a broad understanding of the request. Please include the following:

1. A brief description of the applicant's background

Re-use Hawai'i was founded in 2006 on Oahu with the mission of reducing waste in Hawai'i through two primary programs: Deconstruction and Redistribution. Deconstruction is an alternative to traditional demolition, whereby a structure is skillfully hand-disassembled for the purpose of recovering the maximum amount (up to 80%) of its reusable building material, and minimizing the waste that is produced in the process. The recovered material is then distributed to the community as an affordable building material resource at its Redistribution Center. In 2018, Re-use Hawai'i established a 1.5-acre Redistribution Center in



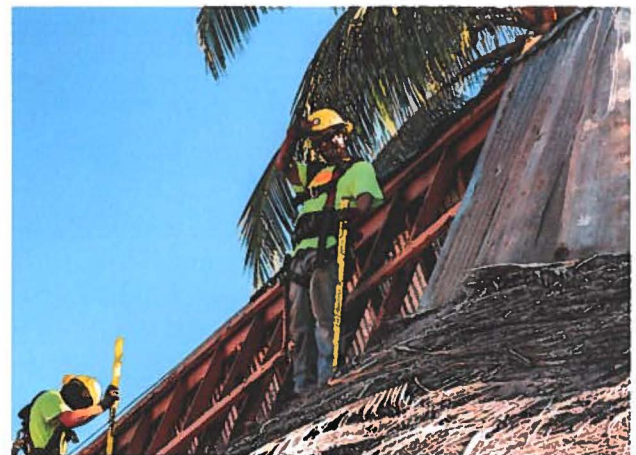
Kailua-Kona while working to complete its largest deconstruction project to-date: Kona Village Resort. Re-use Hawai'i is a licensed contractor, and the only deconstruction services provider in Hawai'i. Its operation directly reduces construction and demolition (C&D) waste, which comprises more than one-third of all the waste in our state's overburdened landfills.



Executive Director Quinn Vittum with salvaged beams

This waste-reduction-to-redistribution model, in which Re-use Hawai'i acts as an industry participant, provides a sustainable alternative to transforms waste into a resource for our communities. It also creates jobs, and minimizes harmful CO2 emissions that contribute to climate change. Both the Deconstruction and Redistribution Program generate revenue to cover 90% of the organization's operation.

Starting with only seven employees, Re-use Hawai'i now employs 34 individuals working on Oahu and Hawai'i Island to help our island communities become more resilient and sustainable. To date, Re-use Hawai'i has performed over 611 deconstruction projects, served more than 38,000 community members through its Redistribution Center, diverted over 11 million pounds of waste away from the landfill, and turned this waste into a locally produced community resource.



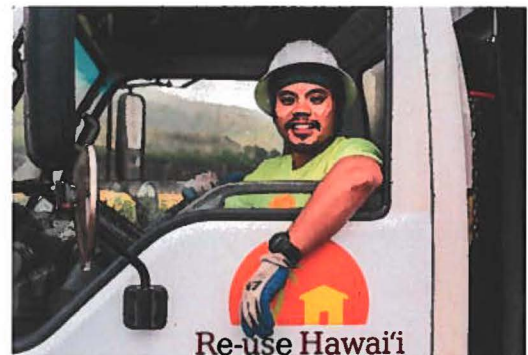
Deconstruction Crew Members at Kona Village Resort

The salvaging and reuse of materials through deconstruction is a growing industry in almost every state in the U.S, as it provides a community resource while also reducing the amount of waste that is landfilled. Re-use Hawai'i's deconstruction program is a very effective way to recover material, is largely self-sustainable, creates jobs and workforce development opportunities, and is scalable to market demand. Each year, more approximately 450 structures are demolished (on Oahu alone), and a majority of that material is sent to the landfill. There is significant opportunity for more deconstruction work, and our vision is to ultimately shift the construction industry paradigm to allow more deconstruction than

demolition. Our practical methodology allows for growth and is designed to be adopted by others in order to maximize waste diversion.

Community engagement is a primary focus of Re-use Hawai'i's operation. In addition to the ongoing communication to our audiences who are fans on social media, regular shoppers at the Redistribution Center, and who subscribe to our weekly e-newsletter, Re-use Hawai'i has developed a number of programs that engage the community and allow participation, understanding and education around the importance of reuse as a lifestyle practice in our island community. Following are the core community engagement programs of Re-use Hawai'i:

- **Community Pick-Up Program** - As a way to maximize waste diversion, we offer free pick up of unwanted building materials from residents and businesses. Our online pick-up request process is easy to navigate, and removes the barriers for people who do not have a way to bring their donation materials to Re-use Hawai'i.



Trucker Jeffrey Savage on his way to a pick up

- **KVIBE** - A program of Kookaa Kalihi Valley, Kalihi Valley Instructional Bike Exchange (KVIBE) is a skills and mentoring program for at-risk Kalihi youth that teaches bicycle mechanic skills. Re-use Hawai'i distributes the refurbished bikes at its Redistribution Center. All proceeds are provided to KVIBE.

- **Volunteer Program** - In collaboration with the *State of Hawai'i Judiciary: Adult/Juvenile Community Service & Restitution Unit*, the initial program will provide workforce opportunities for both the Oahu and Hawai'i Island Processing Department, where all unprocessed lumber is taken directly from the deconstruction job site to be prepared and put out for sale to the community.

- **Community Tours of the Oahu Redistribution Center** - Throughout the calendar year, we provide community tours of the Oahu Redistribution Center as a way to bring attention and understanding of the impact our waste reduction and redistribution efforts have in the community. We conduct tours of all sizes, from small school



Nature Center Keiki Tour the Oahu Redistribution Center

classrooms, to the City & County of Honolulu's *Tour de Trash*, which brings in approximately 60-75 community members every August. In addition to providing a detailed overview of our operation and its importance, we showcase building materials that have been recovered from project sites that community members will recognize, including: Ward Warehouse, Punahou School, Waiālae Bowl, University of Hawaii, to name a few.

- **Local Tree Reclamation Program** - Starting in 2017, Re-use Hawai'i collected a number of local hardwood tree cuttings and created beautiful hardwood live-edge slabs for the community. The pilot program was a success and we are now in the process of developing a long-term program in Kaleloa that recovers trees that would otherwise be chipped or landfilled.

2. The goals and objectives related to the request

Re-use Hawai'i is requesting funding to maintain its operational capacity on Oahu, and expand its operational capacity on Hawai'i Island as follows:

Objective 1: Oahu

Maintain Re-use Hawai'i's Oahu Deconstruction and Redistribution Operations

- **Deconstruction Services:** The goal is to maintain two to three simultaneous deconstruction crews performing an average of two whole-house deconstructions per crew every month. The waste diversion associated with this work scope is approximately 40 to 60 tons of good reusable material that would otherwise be landfilled through traditional demolition methods.
- **Redistribution Center:** The goal is to distribute an average of \$65,000 per month of salvaged materials back into use in the community. This is a needed resource, as the cost of living continues to outpace wages in Hawai'i.

Objective 2: Hawai'i Island

Expand capacity of the Deconstruction and Redistribution Operations on Hawai'i Island:

- **Deconstruction Services:** The goal is to operate one deconstruction crew performing an average of one deconstruction projects per month. The waste diversion associated with this work scope is approximately 10 tons of good reusable material that would otherwise be landfilled through traditional demolition methods.
- **Redistribution Center:** The goal is to distribute an average of \$15,000 per month of salvaged materials back into use by the Hawai'i Island community. This is a needed resource, as the cost of living continues to outpace wages in Hawai'i.

Re-use Hawai'i has a timely opportunity to align and support the goals and outcomes statewide as the population is growing, construction is booming and more waste is being produced. Re-use Hawai'i currently deconstructs approximately 12% of residential structures, in addition to a variety of commercial projects, and provides thousands of community members with affordable building materials. With more awareness of the organization - and an increasing number of industry professionals desiring sustainable solutions - it is paramount that the Re-use Hawai'i Deconstruction Services and Redistribution Programs meet the objectives outlined above.



40,000 sqft. Oahu Redistribution Center



Kona-based Redistribution Center Crew

Through its 13 years of operation, Re-use Hawai'i has proven the effectiveness of its methods. The priority for the next one to three years is the operational refinement of each program, with the intent to make the organization 100% self-sustaining. The identified objectives represent the organization's most immediate path to self-sustainability and greater mission fulfillment.

3. The public purpose and need to be served

Waste is a growing problem in Hawai'i because we are producing more waste than we can effectively manage. The construction and demolition industry produces approximately one-third of all the waste in Hawai'i. Our landfills are being expanded to accommodate more waste as a result of the construction boom, increased tourism, and population growth. We are almost 100% reliable on imports, which makes communities vulnerable to changing global market conditions. Hawai'i creates approximately 2.2 million tons of waste annually. With traditional demolition methods, most of a structure becomes construction waste, which is then taken to the landfill. The lumber and wood products industry has a net global emissions level of approximately 500 million tons of CO₂ per year. Diversion of lumber and other wood products from landfills has the potential to reduce global CO₂ emissions by 135 million tons each year. The transportation of this material creates another source of green house gas emissions.

Due to our distance from our sources of building materials and other products, Oahu alone receives more than 16.6 million tons of material from freight shipping each year. Cargo shipping is estimated to account for more than 84% of the global impact of CO2 emissions of the transport sector. Through our imports, Hawai'i contributes to the global effects of our changing climate. The reuse work in operation at Re-use Hawai'i reduces CO2 emissions by minimizing both the need for new material production and the need for importing material to Hawai'i.

Island communities are unique, reliant and vulnerable

More than any other geographic setting on earth, island communities face significant barriers toward achieving environmental sustainability. Many times, there are limited natural and human resources to drive economic development. This makes islands reliant on imports, and also positions them as vulnerable to changes in global markets.

As an island community, Oahu depends almost 100% on imports, including: finished products, lumber, and Food & Agriculture. Meanwhile, Oahu's waste is a growing problem because the amount of waste we produce outpaces our capacity to manage it. Waste production is on the rise and pushing the capacity of our landfills, which are planning to expand to accommodate the increasing amount of waste from our growing population, tourism and a large affluent sector. In the urban core, multiple high-rise condominiums have been erected over the past five years, with plans for more. This construction boom produces one-third of our island's waste, which is sent directly to our local landfill.

The combination of our heavy reliance on imports, and the ongoing challenge of our waste production outpacing our waste management, makes Hawai'i vulnerable. According to the State of Hawai'i's reporting on Total Solid Waste Generation & Diversion by County, in 2018 Honolulu County generated 2,072,539 tons of waste, and diverted 1,797,452 tons of waste (including H-POWER). In 2018, the Department of Housing and Urban Development reported that in Honolulu, low-income for a single person is someone making up to \$65,350. The median income for a family of four is \$67,905, which indicates that a significant percentage of our population is low-income. It is these low-income community members who experience first, and deepest, the impacts of climate change.

4. Describe the target population to be served

The population served through our objectives are the residents of the state of Hawai'i. All residents are impacted by the practices of the C&D industry and the waste that it produces. Providing alternatives to landfill expansion creates new opportunities for the use of public land.

As mentioned above, this program also benefits community members whose health and standard of living are directly impacted by landfills and their growth, which has been shown to disproportionately be residents of low to moderate income. Through material redistribution, Re-use Hawai'i serves homeowners, renters, contractors, artists, farmers, students, the film industry, business owners, realtors, and others by offering an affordable and locally produced community resource. Over the past 13 years, Re-use Hawai'i has redistributed material valuing over \$7.25 million into the local economy. The prioritization of sustainability today benefits future Hawai'i residents and visitors who will manage the effects of our changing climate and rising sea levels. The production of new material consumes a tremendous amount of green house gases. For every ton of lumber that is salvaged for reuse, 60 pounds of green house gases are prevented by avoiding the manufacturing of new lumber.

5. Describe the geographic coverage

Re-use Hawai'i's mission of waste reduction and conservation is one that involves the entirety of the state. Currently, the majority of salvaged material is sourced and redistributed on Oahu, with rife opportunity for having an expanded impact on Hawai'i Island. Each Redistribution Center purchase is tracked, and program users information is collected. For each of these transactions we gather the zip codes of origin for our program users. Through this data, we have determined that the highest concentrations of our program users on Oahu come from Kailua, Kaneohe, Honolulu, and North Shore Oahu. On Hawai'i Island so far, the highest concentrations of program users are on the west side of the island. Less significant but indicative of future expansion, Re-use Hawai'i has performed deconstruction projects on Kauai and Maui. The materials from these projects were redistributed within the communities from which they were salvaged.

Re-use Hawai'i's Initial Expansion on Hawai'i Island

In 2018, as Re-use Hawai'i worked to deconstruct the 100-structure Kona Village Resort on Hawai'i Island, it secured a 1.5-acre Redistribution Center in Kailua-Kona to provide the community there with affordable building materials. The yard, located on Allied Quarry Road, has no cover, no water or electricity. This raw environment provides challenges for it to be ideal as a public shopping space. But, since opening, the crews have transformed the space as a place for the community to shop five days a week. Also, with grass-roots advertising, local news coverage, and social media, the community is becoming aware of the Redistribution Center. We are grateful to have received State GIA funding in 2017 for this initial expansion. With additional State GIA funding, we will be able to more fully improve the space for community use.

III. Service Summary and Outcomes

The Service Summary shall include a detailed discussion of the applicant's approach to the request. The applicant shall **clearly and concisely specify the results**, outcomes, and measures of effectiveness from this request. The applicant shall:

1. Describe the scope of work, tasks and responsibilities;

The scope of work includes all tasks among the two objectives, detailed below:

Objective 1: Oahu

Maintain Re-use Hawai'i's Oahu Deconstruction and Redistribution Operations.

- **Deconstruction Services:** The goal is to maintain two to three simultaneous deconstruction crews performing an average of two whole-house deconstructions per crew every month. The waste diversion associated with this work scope is approximately 40 to 60 tons of good reusable material that would otherwise be landfilled through traditional demolition methods.
- **Redistribution Center:** The goal is to distribute an average of \$65,000 per month of salvaged materials back into use in the community. This is a needed resource, as the cost of living continues to outpace wages in Hawai'i.

Objective 2: Hawai'i Island

Expand capacity of the Deconstruction and Redistribution Operations on Hawai'i Island:

- **Deconstruction Services:** The goal is to operate one deconstruction crew performing an average of one whole-house deconstruction per month. The waste diversion associated with this work scope is approximately 10 tons of good reusable material that would otherwise be landfilled through traditional demolition methods.
- **Redistribution Center:** The goal is to distribute an average of \$15,000 per month of salvaged materials back into use by the Hawai'i Island community. This is a needed resource, as the cost of living continues to outpace wages in Hawai'i.

These objectives will be carried out and managed by the Executive Director, Chief Financial Officer, Redistribution Center Manager, Deconstruction Program Manager and the Communications Director. Data will be compiled by the Chief Financial Officer and Administrative coordinator.

2. Provide a projected annual timeline for accomplishing the results or outcomes of the service;

Annual Timeline for Accomplishing Objectives

Objective 1: Oahu Maintain Re-use Hawai'i's Oahu Deconstruction and Redistribution Operations in order to meet the State of Hawai'i's waste reduction needs and maximize the generation of affordable resources from landfill bound material.				
Activities:	Q1	Q2	Q3	Q4
1. Deconstruction Services: The goal is to maintain two to three simultaneously operating deconstruction crews performing an average of 60-70 deconstruction projects annually. The waste diversion associated with this workshop is approximately 40 to 60 tons of good reusable material that would otherwise be landfilled through traditional demolition methods. Actively track and manage deconstruction prospects, leads, and secured projects in Salesforce in order to maximize high-performance and an increased percentage of signed deconstruction contracts that also support logistical objectives.	*	*	*	*
4. Redistribution Center: Process and redistribute an average of 75% of all material from each structure back to the community as an affordable resource. This is a needed resource, as the cost of living continues to outpace wages in Hawai'i.	*	*	*	*

Objective 2: Hawai'i Island Expand capacity of the Deconstruction and Redistribution Operations on Hawai'i Island:				
Activities:	Q1	Q2	Q3	Q4
1. Deconstruction Services: The goal is to operate one deconstruction crew performing an average of one deconstruction project per month. The waste diversion associated with this work scope is approximately 10 tons of good reusable material that would otherwise be landfilled through traditional demolition methods.	*	*	*	*
2. Redistribution Center: The goal is to distribute an average of \$15,000 per month of salvaged materials back into use by the Hawai'i Island community. This is a needed resource, as the cost of living continues to outpace wages in Hawai'i.	*	*	*	*

3. Describe its quality assurance and evaluation plans for the request. Specify how the applicant plans to monitor, evaluate, and improve their results; and

Monitor and Evaluation Plans		
Activity	Methods	Information to be monitored & evaluated for future improvement
<p>OBJECTIVE 1: Maintain Re-use Hawai'i's Oahu Deconstruction and Redistribution Operations in order to meet the State of Hawai'i's waste reduction needs and maximize the generation of affordable resources from landfill bound material.</p>	<p><i>Deconstruction Services:</i></p> <ul style="list-style-type: none"> • Proactive prospecting, monthly project development activity analysis and evaluation of project quality. Salesforce will be used for this level of activity. • Web-based, post-deconstruction project surveys provided to deconstruction clients • Bi-monthly strategic management meeting <p><i>Redistribution Center:</i></p> <ul style="list-style-type: none"> • Daily, weekly and monthly sales and marketing analysis 	<p><i>Deconstruction Services:</i> Number of secured sales management protocols sales leads, project timeframes and safety issues, number of operating crews, tonnage of diverted material, recycled metal, embodied energy conservation (CO2 prevention), status of monthly goals, efficiency of program performance, rate of material disposed vs diverted, and number of contracts/projects completed.</p> <p><i>Redistribution Center:</i> Purchase amounts, walk-in donations frequency, pick-up program frequency, material flow through the redistribution center, tons of waste diverted.</p>

Management staff will perform ongoing project evaluations to provide quality assurance and help to identify strength and growth areas. Deconstruction Client surveys will be used to gauge satisfaction and identify needed improvements. The Chief Financial Officer will issue monthly, quarterly, annual and project profit and loss statements to help managers and the Board of Directors understand and improve financial performance. Project development activities will be monitored on a monthly basis.

Activity	Methods	Information to be monitored & evaluated for future improvement
<p>OBJECTIVE 2: Expand capacity of the Deconstruction and Redistribution Operations on Hawai'i Island</p>	<p>Deconstruction Services:</p> <ul style="list-style-type: none"> • Proactive prospecting, monthly project development activity analysis and evaluation of project quality. Salesforce will be used for this level of activity. • Direct outreach with key industry contacts on Hawai'i Island, including construction, architects/designers, local business groups, farms, retail. • Web-based, post-deconstruction project surveys provided to deconstruction clients • Bi-monthly strategic management meeting <p>Redistribution Center:</p> <ul style="list-style-type: none"> • Daily, weekly and monthly sales and marketing analysis 	<p>Deconstruction Services: Number of secured sales management protocols sales leads, project timeframes and safety issues, number of operating crews, tonnage of diverted material, recycled metal, embodied energy conservation (CO2 prevention), status of monthly goals, efficiency of program performance, rate of material disposed vs diverted, and number of contracts/projects completed.</p> <p>Redistribution Center: Material organization and safety of the Redistribution Center, number of daily customers and purchase amounts, number of lumber orders secured and the flow with all customer-related interactions and policies, material flow through the redistribution center, tons of waste diverted.</p>

4. List the measure(s) of effectiveness that will be reported to the State agency through which grant funds are appropriated (the expending agency). The

measure(s) will provide a standard and objective way for the State to assess the program's achievement or accomplishment. Please note that if the level of appropriation differs from the amount included in this application that the measure(s) of effectiveness will need to be updated and transmitted to the expending agency.

IV. Financial

Measures of Effectiveness to be Reported	
Activity	Measure of Effectiveness
Deconstruction & Redistribution Programs on Oahu	<ul style="list-style-type: none"> • Maintain two to three concurrent Deconstruction Crews. • Successful waste diversion from 60-70 deconstruction projects annually. • Maintain a monthly diversion of at least 65 tons through deconstruction. The waste diversion associated with this work scope is approximately 40 to 60 tons of good reusable material that would otherwise be landfilled through traditional demolition methods. • Reach an average monthly sales goal of \$65,000 at the Redistribution Center. • Conduct an average of 30 community pick ups.
Hawai'i Island Deconstruction & Redistribution	<ul style="list-style-type: none"> • Due to the nature and expected frequency of deconstruction demand within this grant period, our goal is to secure and complete an average of one deconstruction project per month on Hawai'i Island. The waste diversion associated with this work scope is approximately 10 tons of good reusable material that would otherwise be landfilled through traditional demolition methods. • Create more covered space at the Redistribution Center. • Establish reach and frequency to Hawai'i Island communities so that the awareness and need for our services and resources is well known.

Budget

1. The applicant shall submit a budget utilizing the enclosed budget forms as applicable, to detail the cost of the request.
 - a. Budget request by source of funds ([Link](#))
 - b. Personnel salaries and wages ([Link](#))
 - c. Equipment and motor vehicles ([Link](#))
 - d. Capital project details ([Link](#))
 - e. Government contracts, grants, and grants in aid ([Link](#))

2. The applicant shall provide its anticipated quarterly funding requests for the fiscal year 2021.

Quarter 1	Quarter 2	Quarter 3	Quarter 4	Total Grant
\$50,000	\$50,000	\$50,000	\$50,000	\$200,000

3. The applicant shall provide a listing of all other sources of funding that they are seeking for fiscal year 2021.

Foundations	Corporate Sponsors
Bank of Hawaii Hawaiian Airlines James and Abigail Campbell Family Foundation Koaniani Fund Kosasa Foundation Matson Foundation Bill Healy Foundation Atherton Family Foundation George N. Wilcox Trust Ward Village Foundation Cooke Family Foundation Hawai'i Community Foundation Cooke Family Foundation McInerny Foundation Alexander & Baldwin Foundation Hawaiian Electric Industries First Hawaiian Bank Kosasa Family Foundation	Allied Builder Systems DTL / WCIT Kona Brewing Co. Servco Foundation The Resort Group Riggs Distributing Kobayashi Group The McNaughton Group BlackSand Capital HONBLUE Trinity Investments Cades Schutte Deloitte Standard Commercial Fergus and Company Hawai'i Life Ferraro Choi Architects Hawai'i G70 HEMIC Honeywell Joe Uno and Associates Vittum Contracting First Insurance Company UHA Nordic PCL

4. The applicant shall provide a listing of all state and federal tax credits it has been granted within the prior three years. Additionally, the applicant shall provide a listing of all state and federal tax credits they have applied for or anticipate applying for pertaining to any capital project, if applicable.

Not applicable.

5. The applicant shall provide a listing of all federal, state, and county government contracts, grants, and grants in aid it has been granted within the prior three years and will be receiving for fiscal year 2021 for program funding.

None

6. The applicant shall provide the balance of its unrestricted current assets as of December 31, 2019.

\$661,590.86

V. Experience and Capability

1. Necessary Skills and Experience

The applicant shall demonstrate that it has the necessary skills, abilities, knowledge of, and experience relating to the request. State your experience and appropriateness for providing the service proposed in this application. The applicant shall also provide a listing of verifiable experience of related projects or contracts for the most recent three years that are pertinent to the request.

In the 13 years since Re-use Hawai'i inception, Re-use Hawai'i has preformed over 611 Deconstruction projects, diverted more than 11 million pounds of material from the waste stream, and redistributed \$7.25 million into the local economy. Re-use Hawai'i is an established environmental nonprofit organization with an impressive track record of success in fulfilling its mission of waste diversion through building material reuse and recycling. The skills needed to perform this work such as, knowledge of deconstruction methods, demolition industry practices, personnel training, and nonprofit finance, are provided by an experienced management team and dedicated staff.

The revenue generating streams of Re-use Hawai'i allow for income that is not often available to other non-profit organizations. Through its careful program design, Re-use Hawai'i is able to generate 90% of the revenue needed to operate.

2. Facilities

The applicant shall provide a description of its facilities and demonstrate its adequacy in relation to the request. If facilities are not presently available, describe plans to secure facilities.

Oahu: The deconstruction program currently maintains four tool sets and two tool trailers. Equipment involved in the transportation of material includes: two 16' flat-bed trucks, three pickup trucks, one full-size van, one box truck, two telescopic forklifts, one skid-steer machine and three conventional forklift trucks. The Re-use Hawai'i Redistribution Warehouse is 40,000 square foot facility in Kaka'ako. The existing administrative infrastructure consists of five offices with multiple workstations, 11 Mac computers connected to an internal network and a voice-over-IP (VOIP) phone system.

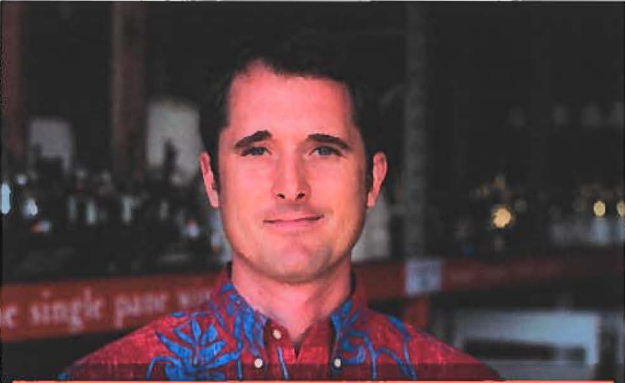
Hawai'i Island: The deconstruction program currently maintains one large tool set, which is secured in a shipping container when its not in use. Equipment involved in the transportation of material includes: one 16' flat-bed truck, two pickup trucks, one full-size van, one box truck, and two telescopic forklifts.

VI. Personnel: Project Organization and Staffing

1. Proposed Staffing, Staff Qualifications, Supervision and Training

The applicant shall describe the proposed staffing pattern and proposed service capacity appropriate for the viability of the request. The applicant shall provide the qualifications and experience of personnel for the request and shall describe its ability to supervise, train and provide administrative direction relative to the request.

In addition to the Board of Directors (list below), Re-use Hawai'i has a strong management team to implement the growth of our programs.



Executive Director **Quinn Vittum** has worked in the building material reuse industry since 2001. He was a director of two reuse organizations in Washington State and has experience in all facets of non-profit building material reuse. He is looked to as a national deconstruction industry leader. He is also a 2019 graduate of the prestigious Omidyar Fellows Program.

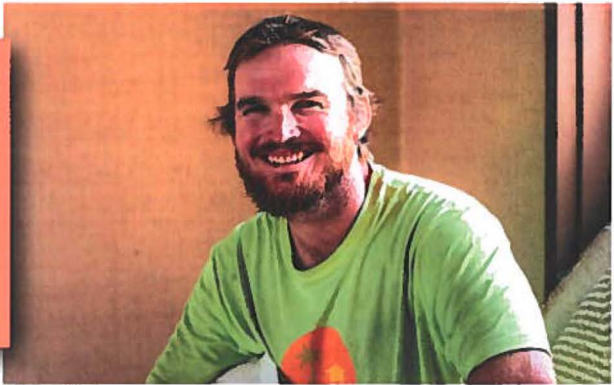


Chief Financial Officer, **Daniel Murren** has 16 years of experience in non-profit and private industry accounting. He has been Re-use Hawai'i's CFO since its inception in 2006. Daniel is also integral in the strategic direction of many aspects of the operation and has impressive expertise in budgeting and cashflow management.

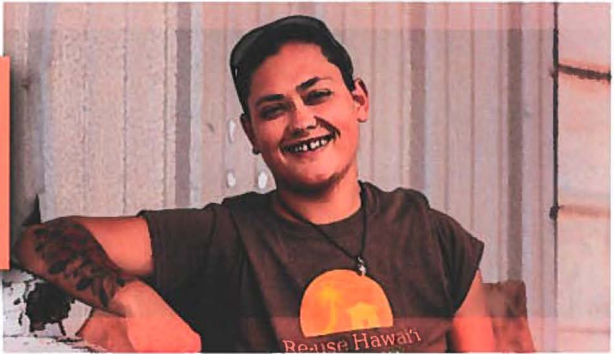
Project Developer, **Michaela Nartia**, has been with Re-use Hawai'i since 2016, starting as a Customer Service Crew Member, followed by a Material Inventory Specialist. She quickly demonstrated her leadership abilities, and was rapidly promoted to an administrative role, and most recently to her current role of Project Developer.



Ryan Reynolds, Deconstruction Program Manager Oahu & Hawai'i Island, has been instrumental in the set up and oversight of the Hawai'i Island Deconstruction Program expansion. For the past 4 years, he has led numerous residential and commercial projects of all sizes, including the 100-structure Kona Village Resort.



Jae Madiro, Oahu Redistribution Center Manager, has a background in building and equipment maintenance, home repair, and retail management. Jae brings skill, care and drive into every facet of her role.



Fundraising and Communications Director, **Carolyn Murren**, develops methods for building awareness within the community and developing long-term fundraising strategies. She has a BA in Journalism from the University of Hawaii at Manoa, as well as 26 years of experience in marketing, communications and advertising.





Re-use Hawai'i
preserve | provide | sustain

RE-USE HAWAI'I BOARD OF DIRECTORS

(100% participation, ~95% meeting attendance)

MICHAEL LAM, BOARD PRESIDENT
SVP, Development, Hunt Development, Hawai'i Region
michael.lam@huntcompanies.com

CASEY CHING, BOARD TREASURER
Vice President, Corporate Properties at Servco Pacific Inc.
casey.ching@servco.com

KIRRA DOWNING, BOARD MEMBER
Director of Communications, DTL, LLC.
kirra@dtlhawaii.com

STEPHEN JONES, BOARD MEMBER
Partner, Ning Lilly & Jones
stevejones@nljlaw.com

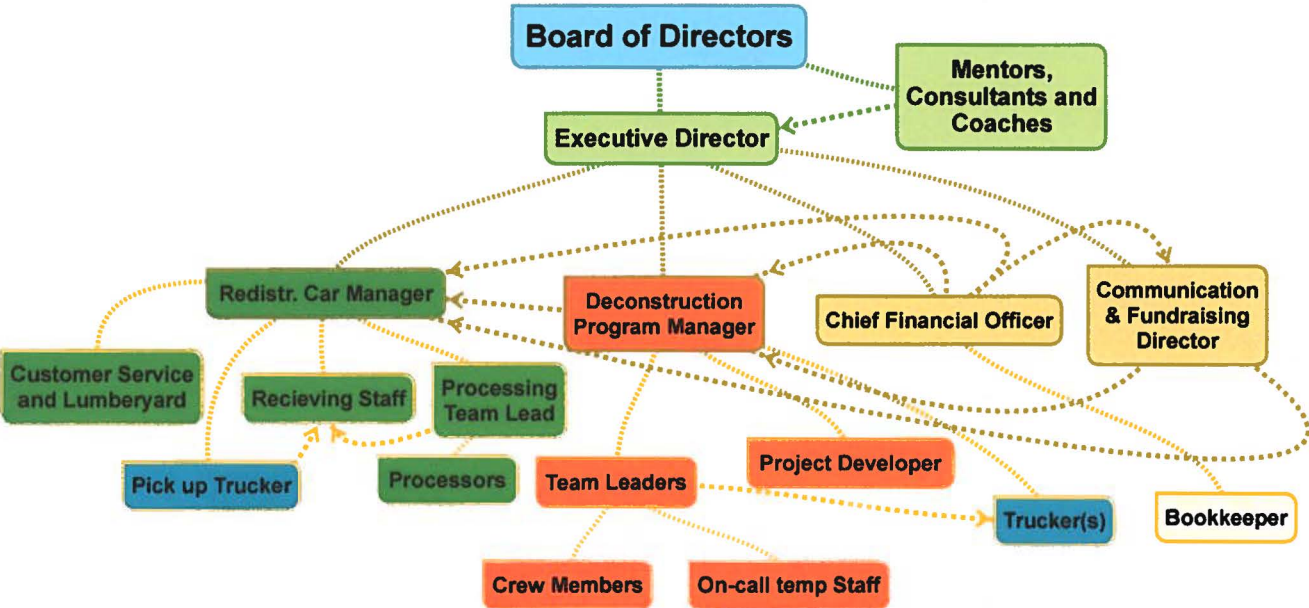
BEN WANG, BOARD MEMBER
Vice President, BlackSand Capital
ben@blacksandcapital.com

QUINN VITTUM, BOARD MEMBER
Executive Director, Re-use Hawai'i
quinn@reusehawaii.org

PAUL MORGAN, EMERITUS BOARD MEMBER
Architect

2. Organization Chart

The applicant shall illustrate the position of each staff and line of responsibility/ supervision. If the request is part of a large, multi-purpose organization, include an organization chart that illustrates the placement of this request.



3.

Compensation

The applicant shall provide an annual salary range paid by the applicant to the three highest paid officers, directors, or employees of the organization by position title, not employee name.

Executive Director - \$58,240

Chief Financial Officer - \$52,000

Deconstruction Program Manager, Oahu and Hawai'i Island - \$45,760

VII. Other

1. Litigation

The applicant shall disclose any pending litigation to which they are a party, including the disclosure of any outstanding judgement. If applicable, please explain.

None

2. Licensure or Accreditation

The applicant shall specify any special qualifications, including but not limited to licensure or accreditation that the applicant possesses relevant to this request.\

Hawaii State Contractors License # C-28351

3. Private Educational Institutions

The applicant shall specify whether the grant will be used to support or benefit a sectarian or non-sectarian private educational institution. Please see [Article X, Section 1, of the State Constitution](#) for the relevance of this question.

Not applicable

4. Future Sustainability Plan

The applicant shall provide a plan for sustaining after fiscal year 2020-21 the activity funded by the grant if the grant of this application is:

- (a) Received by the applicant for fiscal year 2020-21, but
- (b) Not received by the applicant thereafter.

The organization's future sustainability is dependent on operation continuing to grow. In the past 13 years, Re-use Hawai'i has managed to cover 90% of its operating costs while fulfilling its mission of waste diversion and providing an affordable resource to the community.