



## Application Submittal Checklist

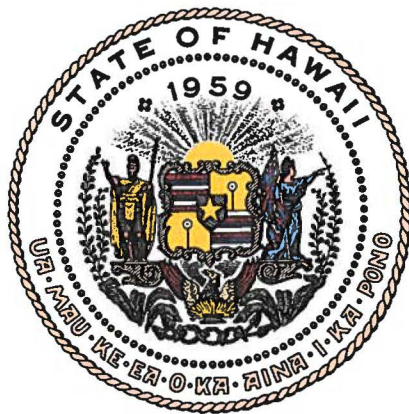
**The following items are required for submittal of the grant application. Please verify and check off that the items have been included in the application packet.**

- 1) Certificate of Good Standing (If the Applicant is an Organization)
- 2) Declaration Statement
- 3) Verify that grant shall be used for a public purpose
- 4) Background and Summary
- 5) Service Summary and Outcomes
- 6) Budget
  - a. Budget request by source of funds ([Link](#))
  - b. Personnel salaries and wages ([Link](#))
  - c. Equipment and motor vehicles ([Link](#))
  - d. Capital project details ([Link](#))
  - e. Government contracts, grants, and grants in aid ([Link](#))
- 7) Experience and Capability
- 8) Personnel: Project Organization and Staffing

  
AUTHORIZED SIGNATURE

Cheryl Vasconcellos, Executive Director  
PRINT NAME AND TITLE

January 15, 2019  
DATE



## Department of Commerce and Consumer Affairs

### CERTIFICATE OF GOOD STANDING

I, the undersigned Director of Commerce and Consumer Affairs of the State of Hawaii, do hereby certify that

**HANA HEALTH**

was incorporated under the laws of Hawaii on 11/06/1995 ; that it is an existing nonprofit corporation; and that, as far as the records of this Department reveal, has complied with all of the provisions of the Hawaii Nonprofit Corporations Act, regulating domestic nonprofit corporations.

IN WITNESS WHEREOF, I have hereunto set my hand and affixed the seal of the Department of Commerce and Consumer Affairs, at Honolulu, Hawaii.

Dated: January 13, 2019

Director of Commerce and Consumer Affairs



**DECLARATION STATEMENT OF  
APPLICANTS FOR GRANTS PURSUANT TO  
CHAPTER 42F, HAWAII REVISIED STATUTES**

The undersigned authorized representative of the applicant certifies the following:

- 1) The applicant meets and will comply with all of the following standards for the award of grants pursuant to Section 42F-103, Hawaii'i Revised Statutes:
  - a) Is licensed or accredited, in accordance with federal, state, or county statutes, rules, or ordinances, to conduct the activities or provide the services for which a grant is awarded;
  - b) Complies with all applicable federal and state laws prohibiting discrimination against any person on the basis of race, color, national origin, religion, creed, sex, age, sexual orientation, or disability;
  - c) Agrees not to use state funds for entertainment or lobbying activities; and
  - d) Allows the state agency to which funds for the grant were appropriated for expenditure, legislative committees and their staff, and the auditor full access to their records, reports, files, and other related documents and information for purposes of monitoring, measuring the effectiveness, and ensuring the proper expenditure of the grant.
- 2) If the applicant is an organization, the applicant meets the following requirements pursuant to Section 42F-103, Hawaii'i Revised Statutes:
  - a) Is incorporated under the laws of the State; and
  - b) Has bylaws or policies that describe the manner in which the activities or services for which a grant is awarded shall be conducted or provided.
- 3) If the applicant is a non-profit organization, it meets the following requirements pursuant to Section 42F-103, Hawaii'i Revised Statutes:
  - a) Is determined and designated to be a non-profit organization by the Internal Revenue Service; and
  - b) Has a governing board whose members have no material conflict of interest and serve without compensation.

Pursuant to Section 42F-103, Hawaii'i Revised Statutes, for grants used for the acquisition of land, when the organization discontinues the activities or services on the land acquired for which the grant was awarded and disposes of the land in fee simple or by lease, the organization shall negotiate with the expending agency for a lump sum or installment repayment to the State of the amount of the grant used for the acquisition of the land.

Further, the undersigned authorized representative certifies that this statement is true and correct to the best of the applicant's knowledge.

HANA HEALTH

\_\_\_\_\_  
(Typed Name of Individual or Organization)

*Cheryl Vasconcellos*  
(Signature)

*January 15, 2019*  
(Date)

Cheryl Vasconcellos  
(Typed Name)

Executive Director  
(Title)

## Application for Grants

*Please check the box when item/section has been completed. If any item is not applicable to the request, the applicant should enter "not applicable".*

### I. Certification- Please attach immediately after cover page

1. **Certificate of Good Standing – Attached.**
2. **Declaration Statement – Attached.**
3. **Public Purpose -** The requested grant in the amount of \$1.5 million dollars will be used for the public purpose pursuant to Section 42F-102, Hawaii Revised Statutes. Construction of modern health care and support service facilities in the Hana District will improve the health, wellness and safety of the resident population.

### II. Background and Summary

This section shall clearly and concisely summarize and highlight the contents of the request in such a way as to provide the State Legislature with a broad understanding of the request. Please include the following:

1. A brief description of the applicant's background;

Hana Health is a 501(c)(3) non-profit organization and Federally Qualified Health Center (FQHC). The purpose of Hana Health is to improve the general health and well-being of the Hana community through the provision of medical care and other social, economic and health related programs. Hana Health is the only health care provider in the Hana district, serving the primary health care and emergent medical needs of residents and visitors alike.

Hana Health currently provides primary medical, dental and behavioral health services to the people of Hana. Unlike most primary care clinics in the State and country, Hana Health coordinates activities with American Medical Response and Maui Memorial Medical Center in the provision of urgent/emergency medical services prior to transport to the hospital on the other side of the island. This takes place seven days a week, 24 hours a day as **Hana Health is the only health care provider in the district.** In addition, Hana Health operates the Hana Fresh farm, farm stand and nutrition center, the cornerstone of our healthy lifestyle and disease prevention programs.

In fiscal year 2017-2018, Hana Health provided medical care to 1,812 individual

patients who made 5,330 visits to the Health Center of which 139 were for vision services, 446 were for after-hours urgent care, 254 were for urgent care during regular operating hours and 105 were for emergencies requiring transport - 13 by ground ambulance, 92 by fixed wing or helicopter. Dental care was provided to an additional 683 patients who made 1,357 visits to the health center. Sixty one percent (61%) of the patients served were insured through Medicaid, Medicare, or were uninsured and provided with subsidized care. Forty one percent (41%) of patients served were Native Hawaiian.

2. The goals and objectives related to the request;

**Goal I.** It is the goal of Hana Health to improve the health and wellness of the Moku (District) of Hana with a particular emphasis on those who are underserved due to social, economic, cultural and geographic barriers.

**Objective A.** Construct the Hana Health Rehabilitation and Support Center which will provide the space necessary for the expansion and addition of needed programs and services. Specifically;

- The Hana Health Rehabilitation and Support Center is new construction located on the same site as the medical center. The 6,300 square foot facility will be constructed to accommodate a multitude of services to meet the community's need for behavioral and mental health services, physical therapy and cardiac rehabilitation, tele-health, complimentary medicine, and short term, overnight medical respite for patients transitioning from the hospital back to their homes in Hana (recuperative care). The facility will also include administrative offices which have been housed in trailers for almost twenty years. The Rehabilitation and Support Center is a mixed-use facility which maximizes the productivity of the building site and improves opportunities for service integration and efficiencies.

3. The public purpose and need to be served;

Construction of modern health care and support service facilities in the Hana District will improve the health, wellness and safety of the resident population, as well as visitors to the area. Without Hana Health, the only medical center in the District of Hana, the entire resident population of the District, as well as the approximately 600,000 visitors per year would be at greatly increased risk for serious, often fatal medical problems and injury resulting in death.

The rural district of Hana (Census Tract 301) is one of the most isolated areas in the state of Hawaii. It is made up of small, isolated settlements scattered over 233 square miles. Many of the villages are located a minimum of 45 minutes from the main town of Hana and more than two hours from the County Seat of Wailuku. The majority of Hana residents, 1,020, or 52% are Native

Hawaiian/Part Hawaiian (2010 U.S. Census), the highest in the state (Hawaii Department of Health, Primary Care Needs Assessment Data, 2009).

Both the geographic isolation and the special health care needs of the Native Hawaiian population are factors which impact access to and delivery of health care services in the Hana District. Hana is federally designated as a Medically Under-Served Population, a Primary Care Health Professional Shortage Area, a Dental Health Professional Shortage Area and a Mental Health Professional Shortage Area.

**Income and Poverty Level:** In 2015, the median household income in the State of Hawaii was \$73,486, \$66,476 in Maui County, and \$42,364 in the Hana District. Hana's median household income is 73% below the State of Hawaii, and 56% below Maui County (U.S. Census 2011-2015 American Community Survey 5-Year Estimates).

Per capita income in the State of Hawaii is \$29,882 and \$29,664 in Maui County. Per capita income in Hana is \$20,039, 49% lower than the state, and 48% lower than the rest of Maui County. (U.S. Census 2011-2015 American Community Survey 5-Year Estimates). This is the third lowest of all communities in the State (State Primary Care Needs Assessment Data Book, 2016).

The District of Hana is one of the poorest communities in the State, with a cost of living that is higher than the State average. Overall, the standard of living in Hana is far below most other areas in the State. Based on numerous studies, the socioeconomic status of the district is presumed to have a negative impact on health status based on numerous studies in the field. Additionally, the economy of the district has a significant impact on the availability and accessibility of needed services and is a barrier to assuring a seamless system of health care.

**Unemployment:** Unemployment in the Hana District is 8.5% compared to 6% in the rest of Maui County, and 5.5% in the State according to U.S. Census 2012-2016 American Community Survey 5-Year Estimates. The Hana District workforce is more likely to be self-employed compared to the rest of the State inferring the lack of other viable employment opportunities in the District, as well as a more self-reliant, culturally based work force. Self-employment also suggests that this population may be less likely to have health insurance coverage.

The Hana Health Needs Assessment (2016) also finds that Twenty-four percent (24%) of Hana's labor force is unemployed or underemployed (working part-time but wanting full time employment). Among Native Hawaiians living in the Hana District, thirty-one percent (31%) of the labor force is unemployed or underemployed. Employer mandated health insurance in Hawaii is directly tied to full-time employment, which suggests that up to 17% of part-time workers and

22% of Native Hawaiians working part-time may lack adequate health insurance coverage.

Health: Life expectancy for Native Hawaiians is 6.2 years lower than life expectancy for the State, even though Native Hawaiian life expectancy has increased by 11.8 years since 1950 (Center for Native and Pacific Health Disparities Research, John A. Burns School of Medicine, University of Hawaii).

The overall mortality rate in the Hana District is 709.5 per 100,000, the second highest in the State. **Mortality due to heart disease is the highest in the State at 257.1 per 100,000.** The mortality rate for unintentional injury is also the highest in the state at 63.2 per 100,000 (State Primary Care Needs Assessment Data Book 2016).

Native Hawaiians and Pacific Islanders have among the highest rates of cardio-metabolic disorders which include obesity, diabetes and cardiovascular disease. Native Hawaiians have higher rates of death and at a younger average age for diabetes and heart disease, as well as cancer and other leading causes of death as compared to the overall State's population (Center for Native and Pacific Health Disparities Research, John A. Burns School of Medicine, University of Hawaii).

Native Hawaiians living in the Hana District have a high risk health profile resulting in the onset of preventable chronic health conditions and premature death. This is exasperated by high rates of unemployment/underemployment and poverty. In addition, there is limited access to mediating opportunities due to the extreme isolation, small population, limited economic base and rural nature of the Hana District.

Need for the Rehabilitation and Support Center: Hana Health expects to serve approximately 1,021 patients annually through the Rehabilitation and Support Center.

- Physical Therapy and/or Chiropractic Care – 423
- Cardiac Habilitation/Rehabilitation - 80 individuals
- Mental/Behavioral Health services - 478 individuals.
- Medical Respite – 40

Estimates are based on QMark Research conducted for Hana Health in 2016, a review of 2011-2015 U.S. Census data and Hana Health patient data, as well as anecdotal information provided by Hana Health providers.

10% of Hana residents are in need of Physical Therapy Services, or 184 individuals.

(1,841 district population x 10%)

(Data Source: QMark 2016 Study, U.S. Census 2011-2015)



According to Hana Health physicians, approximately 15 referrals are made each month for physical therapy (180).

13% of Hana residents are in need of Chiropractic Care, or 239 individuals.  
(1,841 district population x 13%)  
(Data Source: QMark 2016 Study, U.S. Census 2011-2015)

Approximately 10.9% (201) of the Hana District population has a physical disability. It is estimated that 112 individuals have an ambulatory difficulty.  
(1,841 district population x 10.9%)  
(Data Source: U.S. Census 2011-2015)

There are approximately 247 individuals 65 years of age and older living in the Hana district. It is estimated that 16.2%, or 40 of these individuals have an ambulatory difficulty.

247 Residents 65 years of age or older x 16.2% with an ambulatory difficulty = 40.

(Data Source: U.S. Census 2011-2015)

10% of Hana district households have at least one person living with a heart condition, or 54 individuals. Additionally, 35% (189) of households reported at least one household member having high blood pressure, and 25% (135) reported having high cholesterol.

(542 households x 70% = 379 households – however this is likely a duplicative count as individuals often have more than one condition)

(Data Source: QMark 2016 Study, U.S. Census 2011-2015)

According to Hana Health physicians approximately 50 patients have severe heart conditions and another 30+ have more moderate heart problems. All would benefit from cardiac rehabilitation.

13% of Hana residents are suffering from Depression, or 239 individuals.

(1,841 district population x 13%)

(Data Source: QMark 2016 Study, U.S. Census 2011-2015)

8% of Hana residents are in need of Counseling Services, or 147 individuals.

(1,841 district population x 8%)

(Data Source: QMark 2016 Study, U.S. Census 2011-2015)

5% of Hana residents have substance abuse problems, or 92 individuals.

(1,841 district population x 5%)

(Data Source: QMark 2016 Study, U.S. Census 2011-2015)

Hana Health provided medically focused mental health and substance abuse care to 251 patients in 2016. This may be a duplicative count, as patients often have more than one mental health/substance abuse condition. All of these

individuals would benefit from additional services provided by mental health practitioners.

(Data Source: AthenaNet electronic health record/UDS Report)

According to Hana Health physicians, between 50 and 100 patients need help for chronic depression, anxiety and obsessive compulsive disorder.

Approximately 30 patients have schizophrenia, bi-polar or severe depression. All would benefit from mental health therapy.)

Approximately 10 patients a month (120 a year) require hospital care of which half, or five a month would benefit from medical respite care before returning to their homes.

4. Describe the target population to be served; and

The entire District of Hana will benefit from this project. Native Hawaiians, children, the elderly, those with or at risk of chronic health conditions, those with specific medical conditions, and those with behavioral or mental health conditions are primary targets of the programs to be provided through the Rehabilitation and Support Center. In addition, patients transitioning from tertiary care (hospitalization) back home to Hana, will benefit from a medical respite program (“recuperative care”) whereby they are able to be medically supervised by Hana Health providers on a 24-hour basis until they are able to return home.

5. Describe the geographic coverage.

The District of Hana – Census Tract 301

## **II. Service Summary and Outcomes**

The Service Summary shall include a detailed discussion of the applicant’s approach to the request. The applicant shall clearly and concisely specify the results, outcomes, and measures of effectiveness from this request. The applicant shall:

1. Describe the scope of work, tasks and responsibilities;

Initiate and complete construction work.

Tasks and Responsibilities:

- A. Prepare/Publish RFP and select contractor – Board of Directors, Executive Director, Architect.
- B. Prepare and sign contract – Architect, Contractor, Executive Director
- C. Mobilization, Survey and Layout – General Contractor

- D. Site Preparation – General Contractor, Sub-Contractors
- E. Construction – General Contractor, Sub-Contractors

2. Provide a projected annual timeline for accomplishing the results or outcomes of the service;

See Attached.

3. Describe its quality assurance and evaluation plans for the request. Specify how the applicant plans to monitor, evaluate, and improve their results; and

Hana Health is committed to providing quality services to all beneficiaries in an organization - wide effort to continuously improve our processes and the delivery of care to the community we serve. Hana Health maintains a Quality Assurance/Performance Improvement System to assure excellence in the quality of care provided. The system is designed to increase accountability, support quality improvement, facilitate and support program decisions, monitor the population's health status, empower patients and families to make informed health care decisions and provide evidence to eliminate wasteful practices. Hana Health's quality assurance program measures, monitors, tracks and improves performance in key aspects of all operations.

The Board of Directors maintains oversight for the Quality Assurance/Performance Improvement Program and will be monitoring progress on this project as well.

Urban Works is the architect firm that has been contracted to design this project. Management of the construction project is included in their scope of services to be provided. This will ensure that the completed buildings support the design intent, conforms to the construction documents and ensures the quality of materials and workmanship. The architect will be available for advice and consultation with the Executive Director and the Board of Directors throughout the construction phase. Additionally, the project will be monitored against both time and cost objectives.

4. List the measure(s) of effectiveness that will be reported to the State agency through which grant funds are appropriated (the expending agency). The measure(s) will provide a standard and objective way for the State to assess the program's achievement or accomplishment. Please note that if the level of appropriation differs from the amount included in this application that the measure(s) of effectiveness will need to be updated and transmitted to the expending agency.

The Contractors work plan will provide the objective basis for assessing the progress of the construction project. Payment will be made as each phase of the work plan is completed until a Certificate of Occupancy is secured.

**III. Financial**

**Budget**

1. The applicant shall submit a budget utilizing the enclosed budget forms as applicable, to detail the cost of the request.
  - a. Budget request by source of funds ([Link](#))
  - b. Personnel salaries and wages ([Link](#))
  - c. Equipment and motor vehicles ([Link](#))
  - d. Capital project details ([Link](#))
  - e. Government contracts, grants, and grants in aid ([Link](#))
  
2. The applicant shall provide its anticipated quarterly funding requests for the fiscal year 2019.

Quarter 1	Quarter 2	Quarter 3	Quarter 4	Total Grant
	500,000	500,000	500,000	1,500,000

3. The applicant shall provide a listing of all other sources of funding that they are seeking for fiscal year 2019.

Maui County CDBG	\$ 800,000	Application Submitted
Weinberg Foundation	\$1,800,000	Final Third of Financing
Hana District Private Donors	\$ 25,000	Fundraising Campaign in Process
Corporate/Foundations	\$ 675,000	Capital Campaign in Process

4. The applicant shall provide a listing of all state and federal tax credits it has been granted within the prior three years. Additionally, the applicant shall provide a listing of all state and federal tax credits they have applied for or anticipate applying for pertaining to any capital project, if applicable.

NA

5. The applicant shall provide a listing of all federal, state, and county government contracts, grants, and grants in aid it has been granted within the prior three years and will be receiving for fiscal year 2020 for program funding.

HRSA	Health Center Operations	\$1,367,995	2019-2020
HRSA	Mental Health Service Expansion	\$ 285,000	2018-2019
HRSA	Health Center Operations	\$1,325,395	2018-2019
HRSA	Health Center Operations	\$1,308,468	2017-2018
HRSA	Mental Health Service Expansion	\$ 175,000	2017-2018
HRSA	Health Center Operations	\$1,264,750	2016-2017
HRSA	Rehab Center Construction	\$1,000,000	2016-2017
HRSA	Health Center Operations	\$ 994,714	2015-2016
State POS	Health Center Operations	\$1,130,000	2019-2020
State GIA	Rehab Center Design (2015)	\$ 500,000	2018-2019
State GIA	Health Center Operations (2017)	\$ 200,000	2018-2019
State POS	Health Center Operations	\$1,130,000	2018-2019
State POS	Health Center Operations	\$1,130,000	2017-2018
State POS	Health Center Operations	\$1,130,000	2016-2017
State POS	Health Center Operations	\$1,130,000	2015-2016

6. The applicant shall provide the balance of its unrestricted current assets as of December 31, 2018.

There are no unrestricted current assets as of December 31, 2018.

#### **IV. Experience and Capability**

##### **1. Necessary Skills and Experience**

The applicant shall demonstrate that it has the necessary skills, abilities, knowledge of, and experience relating to the request. State your experience and appropriateness for providing the service proposed in this application. The applicant shall also provide a listing of verifiable experience of related projects or contracts for the most recent three years that are pertinent to the request.

Hana Health has been providing medical care to the district of Hana since July 1997 when the State transferred the operation of the Hana Medical Clinic to Hana Health (Act 263). State POS agreements have been awarded to Hana Health for the same period. Hana Health was granted Federally Qualified Health Center status in 2000 after meeting numerous requirements and has received federal operating support from the Bureau of Primary Health Care since that time.

Hana Health's Executive Director and Board of Directors has a demonstrated track record in securing and managing public and private funds for both operations and capital improvement. In addition, Hana Health manages a twelve-acre project site

which currently includes the medical center, an employee residence, administrative offices, Hana Fresh Nutrition Center built in 2012 (a \$2.3 million project), the Hana Fresh organic farm and farm stand. The Executive Director has managed three Environmental Assessments, construction of the \$2.3 million nutrition center, a \$900,000 medical center renovation project, and an \$80,000 employee residence renovation project.

In the past three years, Hana Health has received funds for and managed the closure of four Large Capacity Cesspools and the installation of three septic systems financed with a Bank of Hawaii loan and subsequently a \$200,000 State Legislative appropriation.

## **2. Facilities**

The applicant shall provide a description of its facilities and demonstrate its adequacy in relation to the request. If facilities are not presently available, describe plans to secure facilities.

Hana Health operates on a 2.035 acre parcel of property where the current medical center is located, and on an adjoining ten acre parcel where the Hana Fresh farm is located. Both parcels are owned by the State of Hawaii and have been leased to Hana Health for 55 years, at \$1 per year. With the exception of the Hana Fresh Nutrition Center which was completed in May 2012, Hana Health facilities range from more than 50 years old to more than 90 years old and are in need of continual repair and maintenance. Built in 1965, the current 4,000 square foot medical center underwent a major renovation two years ago including the installation of new windows, floors, central air conditioning and a new roof. However, the space is inadequate to meet program and administrative needs. Three modular units have been placed on the property to support operations, with a fourth to be installed in the next two months for the expansion of mental health services.

## **V. Personnel: Project Organization and Staffing**

### **1. Proposed Staffing, Staff Qualifications, Supervision and Training**

The applicant shall describe the proposed staffing pattern and proposed service capacity appropriate for the viability of the request. The applicant shall provide the qualifications and experience of personnel for the request and shall describe its ability to supervise, train and provide administrative direction relative to the request.

#### Staffing

Executive Director

#### Position Requirements

A minimum of 10 years experience in similar capacity.

The Executive Director is responsible for project implementation and oversight. She has worked with several architectural and planning firms to address the completion of state and federal environmental assessments, zoning issues, conceptual designs for the health center campus, schematic designs and construction documents for the Hana Health Nutrition Center and the Maui County building permit process. She managed construction of the recently completed Nutrition Center, as well as the permit process for the Telemedicine, Business and Training Center. DLNR would not provide approval for this project, so it had to be tabled, resulting in the termination of a \$500,000 EDA grant. Ms. Vasconcellos managed a \$900,000 state CIP grant for the renovation of the medical center which was completed almost four years ago. She also managed the installation of three new septic systems to replace the existing Large Capacity Cesspools located on the property as required by EPA. This \$260,000 project was completed almost four years ago, as well. Ms. Vasconcellos is currently working with Urban Works, a Honolulu based architect firm contracted to develop the design and construction documents for the Rehab Center.

**2. Organization Chart**

The applicant shall illustrate the position of each staff and line of responsibility/supervision. If the request is part of a large, multi-purpose organization, include an organization chart that illustrates the placement of this request.

See Attached.

**3. Compensation**

The applicant shall provide an annual salary range paid by the applicant to the three highest paid officers, directors, or employees of the organization by position title, not employee name.

Medical Director	\$194,700 - \$243,400
Physician	\$170,600 - \$213,200
Executive Director	\$141,100 - \$176,400

**VI. Other**

**1. Litigation**

The applicant shall disclose any pending litigation to which they are a party, including the disclosure of any outstanding judgement. If applicable, please explain.

None.

**2. Licensure or Accreditation**

The applicant shall specify any special qualifications, including but not limited to licensure or accreditation that the applicant possesses relevant to this request.

All clinical staff are appropriately licensed and credentialed.

**3. Private Educational Institutions**

The applicant shall specify whether the grant will be used to support or benefit a sectarian or non-sectarian private educational institution. Please see [Article X, Section 1, of the State Constitution](#) for the relevance of this question.

NA

**4. Future Sustainability Plan**

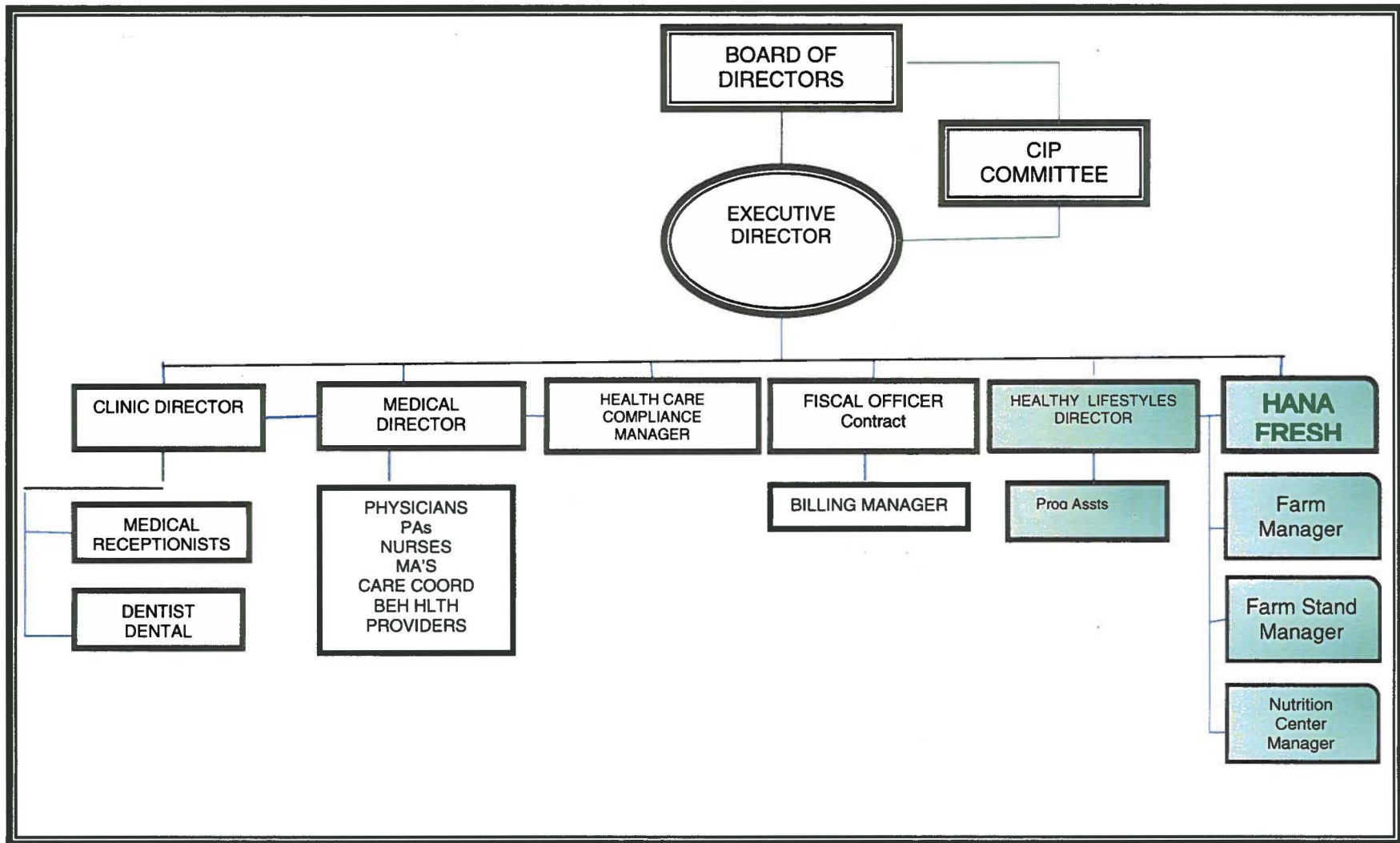
The applicant shall provide a plan for sustaining after fiscal year 2018-19 the activity funded by the grant if the grant of this application is:

- (a) Received by the applicant for fiscal year 2018-19, but
- (b) Not received by the applicant thereafter.

This is a CIP request which will not require on-going funding.







## BUDGET REQUEST BY SOURCE OF FUNDS

Period: July 1, 2019 to June 30, 2020

Applicant: HANA HEALTH

BUDGET CATEGORIES	Total State Funds Requested (a)	Total Federal Funds Requested (b)	Total County Funds Requested (c)	Total Private/Other Funds Requested (d)
<b>A. PERSONNEL COST</b>				
1. Salaries				
2. Payroll Taxes & Assessments				
3. Fringe Benefits				
<b>TOTAL PERSONNEL COST</b>				
<b>B. OTHER CURRENT EXPENSES</b>				
1. Airfare, Inter-Island				
2. Insurance				
3. Lease/Rental of Equipment				
4. Lease/Rental of Space				
5. Staff Training				
6. Supplies				
7. Telecommunication				
8. Utilities				
9				
10				
11				
12				
13				
14				
15				
16				
17				
18				
19				
20				
<b>TOTAL OTHER CURRENT EXPENSES</b>				
<b>C. EQUIPMENT PURCHASES</b>				
<b>D. MOTOR VEHICLE PURCHASES</b>				
<b>E. CAPITAL</b>	<b>1,500,000</b>	<b>1,000,000</b>	<b>800,000</b>	<b>3,000,000</b>
<b>TOTAL (A+B+C+D+E)</b>	<b>1,500,000</b>	<b>1,000,000</b>	<b>800,000</b>	<b>3,000,000</b>
<b>SOURCES OF FUNDING</b>		Budget Prepared By:		
(a) Total State Funds Requested	1,500,000	CHERYL VASCONCELLOS 808-248-7515, EXT 26		
(b) Total Federal Funds Requested	1,000,000	Name (Please type or print) Phone		
(c) Total County Funds Requested	800,000	<i>Cheryl Vasconcellos</i> <i>Jan 15, 2019</i>		
(d) Total Private/Other Funds Requested	2,500,000	Signature of Authorized Official Date		
<b>TOTAL BUDGET</b>	<b>5,800,000</b>	EXECUTIVE DIRECTOR		
		Name and Title (Please type or print)		



## BUDGET JUSTIFICATION - EQUIPMENT AND MOTOR VEHICLES

Period: July 1, 2019 to June 30, 2020

Applicant: HANA HEALTH

DESCRIPTION EQUIPMENT	NO. OF ITEMS	COST PER ITEM	TOTAL COST	TOTAL BUDGETED
NA			\$ -	
			\$ -	
			\$ -	
			\$ -	
			\$ -	
<b>TOTAL:</b>				
<b>JUSTIFICATION/COMMENTS:</b>				

DESCRIPTION OF MOTOR VEHICLE	NO. OF VEHICLES	COST PER VEHICLE	TOTAL COST	TOTAL BUDGETED
NA			\$ -	
			\$ -	
			\$ -	
			\$ -	
			\$ -	
<b>TOTAL:</b>				
<b>JUSTIFICATION/COMMENTS:</b>				

## BUDGET JUSTIFICATION - CAPITAL PROJECT DETAILS

Period: July 1, 2019 to June 30, 2020

Applicant: HANA HEALTH

FUNDING AMOUNT REQUESTED						
TOTAL PROJECT COST	ALL SOURCES OF FUNDS RECEIVED IN PRIOR YEARS		STATE FUNDS REQUESTED	OTHER SOURCES OF FUNDS REQUESTED	FUNDING REQUIRED IN SUCCEEDING YEARS	
	FY: 2017-2018	FY: 2018-2019	FY:2019-2020	FY:2019-2020	FY:2020-2021	FY:2021-2022
PLANS						
LAND ACQUISITION						
DESIGN		500,000				
CONSTRUCTION		1,000,000	1,500,000	3,300,000		
EQUIPMENT						
<b>TOTAL:</b>		1,500,000	1,500,000	3,300,000		
<b>JUSTIFICATION/COMMENTS:</b>						
Architect provided cost estimates based on the preliminary conceptual design for this project, as well as past experience.						

**GOVERNMENT CONTRACTS AND / OR GRANTS**

Applicant: HANA HEALTH

Contracts Total: 10,343,000

	<b>CONTRACT DESCRIPTION</b>	<b>EFFECTIVE DATES</b>	<b>AGENCY</b>	<b>GOVERNMENT ENTITY (U.S. / State / Haw / Hon / Kau / Mau)</b>	<b>CONTRACT VALUE</b>
1	State Purchase of Service - Health Center Operations	July1, 2016 - June 30, 2020	DOH	State	4,512,000
2	330 FQHC Grant - Health Center Operations	March 1, 2017 - Feb 28,2020	HRSA	Federal	3,846,000
3	State GIA - Rehab Center Design/Cons Documents 2015 Appropriation	July1, 2018 - June 30, 2019	DOH	State	500,000
4	330 Mental Health Grant	Oct 1, 2018 - Sept 30, 2019	HRSA	Federal	285,000
5	330 FQHC Grant - Construction - Rehab Center	May 1, 2016 - April 30, 2019	HRSA	Federal	1,000,000
6	State GIA - Health Center Operations 2017 Appropriation	July 1, 2017 - June 30, 2018	DOH	State	200,000
7					
8					
9					
10					
11					
12					
13					
14					
15					
16					
17					
18					
19					
20					
21					
22					
23					
24					
25					
26					
27					
28					
29					
30					