

House District(s) 29

Senate District(s) 12

THE TWENTY-NINTH LEGISLATURE  
APPLICATION FOR GRANTS  
CHAPTER 42F, HAWAII REVISED STATUTES

Log No:

For Legislature's Use Only

Type of Grant Request:

GRANT REQUEST - OPERATING

GRANT REQUEST - CAPITAL

"Grant" means an award of state funds by the legislature, by an appropriation to a specified recipient, to support the activities of the recipient and permit the community to benefit from those activities.

"Recipient" means any organization or person receiving a grant.

STATE DEPARTMENT OR AGENCY RELATED TO THIS REQUEST (LEAVE BLANK IF UNKNOWN): \_\_\_\_\_

STATE PROGRAM I.D. NO. (LEAVE BLANK IF UNKNOWN): \_\_\_\_\_

1. APPLICANT INFORMATION:

Legal Name of Requesting Organization or Individual:  
HAWAII THEATRE CENTER

Db:

Street Address: 1130 Bethel Street, Honolulu, HI 96813

Mailing Address: 1130 Bethel Street, Honolulu, HI 96813

2. CONTACT PERSON FOR MATTERS INVOLVING THIS APPLICATION:

Name SUZANNE WATANABE LAI

Title Director of Development

Phone # 808-791-1302

Fax # 808-528-0481

E-mail suzannewatanabelai@hawaii theatre.com

3. TYPE OF BUSINESS ENTITY:

- NON PROFIT CORPORATION INCORPORATED IN HAWAII
- FOR PROFIT CORPORATION INCORPORATED IN HAWAII
- LIMITED LIABILITY COMPANY
- SOLE PROPRIETORSHIP/INDIVIDUAL
- OTHER

6. DESCRIPTIVE TITLE OF APPLICANT'S REQUEST:

COMPLETE THE INTERIOR AND EXTERIOR LIGHTING UPGRADE TO ENERGY EFFICIENT LEDS AND REPLACE THE EMERGENCY LIGHTING TRANSFER SYSTEM

4. FEDERAL TAX ID #: [REDACTED]

5. STATE TAX ID #: [REDACTED]

7. AMOUNT OF STATE FUNDS REQUESTED:

FISCAL YEAR 2019: \$ 648,061

8. STATUS OF SERVICE DESCRIBED IN THIS REQUEST:

- NEW SERVICE (PRESENTLY DOES NOT EXIST)
- EXISTING SERVICE (PRESENTLY IN OPERATION)

SPECIFY THE AMOUNT BY SOURCES OF FUNDS AVAILABLE AT THE TIME OF THIS REQUEST:

STATE \$ 0

FEDERAL \$ 0

COUNTY \$ 0

PRIVATE/OTHER \$ 0

TYPE

GREGORY D. DUNN / PRESIDENT AND CEO  
NAME & TITLE

JANUARY 18, 2018  
DATE SIGNED

JAN 19 2018 *[Signature]* 2:30 PM

## Application for Grants

*Please check the box when item/section has been completed. If any item is not applicable to the request, the applicant should enter "not applicable".*

### I. Background and Summary

This section shall clearly and concisely summarize and highlight the contents of the request in such a way as to provide the State Legislature with a broad understanding of the request. Please include the following:

1.  A brief description of the applicant's background;

The Hawaii Theatre has played a significant role in Hawaii's cultural landscape since 1922, from its earliest days as a vaudeville house to its present incarnation as the state's foremost historic performance venue. With 1,400 seats, the Theatre is the second largest proscenium performance facility in the state and the only remaining theatre of its type in Hawaii.

After falling into disrepair and facing the wrecking ball, a group of concerned citizens formed the nonprofit Hawaii Theatre Center (HTC) and raised the \$32 million needed to acquire the property under the Theatre and adjoining properties and restore this historic treasure as a world-class presentation hall. The beautifully restored Theatre reopened in 1996 with the mission to serve arts audiences, arts organizations and the community of Hawaii by:

- Preserving Hawaii's historic Hawaii Theatre
- Promoting Hawaiian cultural arts
- Presenting world class arts and cultural experiences
- Providing arts education for students
- Creating our neighborhood block as the premier arts and culture destination

Since reopening in 1996, HTC has served more than 2 million patrons of all ages, ethnicities and socio-economic backgrounds. In this past year, the Theatre has welcomed film screenings, cultural programs and other public events. These included HTC's own season of local, national and international performing artists as well as shows presented by other licensed users.

2.  The goals and objectives related to the request;

Having served the residents and visitors to Hawaii with high quality, impactful, and relevant artistic productions since its renovation more than 21 years ago, Hawaii Theatre must now plan strategically to ensure we continue to meet current community needs, maximize the impact of our services and address the opportunities and challenges of a changing future.

Although state-of-the-art when the Theatre re-opened in 1996, its systems and equipment have become out-of-date and inefficient over the years. We have invested in significant upgrades in recent years, including a new energy-saving air conditioning system, new

infrared ADA hearing system for the hearing impaired, a state-of-the-art sound system and, in partnership with the State of Hawaii, we installed a digital film projection system in 2013 that has elevated our historic 'movie palace' to a world-class cinema venue, with Dolby Surround Sound and 3-D technology capable of accommodating today's high-tech film industry and increasing HTC's programming opportunities. In 2016, the State funded the replacement of our outdated stage lights, which were no longer manufactured and posed a safety issue for our patrons. The new lights ensures our stage meets the technological requirements so the Theatre remains a competitive venue option. The State has also approved funding for a portion of the lighting upgrades in the Theatre's interior, pending a contract.

Our goal now is to complete "green" technology lighting upgrades in the interior and exterior of the Theatre as well as replace the emergency lighting transfer system that will enable HTC to meet the evolving infrastructure and technological requirements of a state-of-the-art performance venue, greatly reduce our operating costs as well as our carbon footprint and enhance the safety and live theatre experience for our audiences.

Investing in these capital improvement priorities today will have a significant impact in assuring the historic Hawaii Theatre remains a safe, sound and sustainable cultural resource for our community, well into the future.

### **Summary**

As a public venue, our patron's safety, ease of venue use and the longevity of systems and their associated maintenance cost are top priority.

The execution of the project programs will increase luminosity and visual acuity, bring areas of the building up to safety code and egress standards and reduce power consumption throughout the facility.

### **Project Programs**

#### **1. Complete the replacement of remaining interior lights and exterior lights with LED technology & bring the facility up to safety standards**

The Theatre's interior architectural lighting is comprised of highly inefficient lighting sources and fixtures which utilizes hundreds of incandescent lamps. These lamps create heat which unnecessarily increase the load on the HVAC systems, negatively impact finishes and are prohibitively expensive to operate and maintain.

Through programs that will replace the lighting in the lobbies, chair aisle and wall-mounted aisle lights, Weyand Room, restrooms, box office, administrative offices, dressing rooms, backstage areas, catwalks and exterior and façade the Theatre will mitigate ongoing operating costs, increase attendee comfort and safety and reduce maintenance burdens and facility degeneration. The facility will see a reduction of power consumption of 60% per application and a longer lifecycle on the HVAC systems

## 2. Replace Emergency Lighting Transfer System

An Emergency Lighting Transfer System is designed to switch one or more lighting loads from one power source to another during a power failure or other emergency situation. When a power loss occurs, which is common in Chinatown, it is critical that emergency lighting systems turn on allowing people to make a safe exit from the building. As a public venue, safety is always a top priority.

Hawaii Theatre's Emergency Lighting Transfer System is more than 20 years and total failure is imminent. The program for the new emergency lighting transfer system will utilize top of the line battery technology that will be integrated into the solar systems at the facility resulting in a 100% renewable source for our emergency systems.

### 3. The public purpose and need to be served;

Last year, nonprofit organizations accounted for approximately 74% of HTC's licensed users. HTC provides a state-of-the-art, professionally managed venue – at greatly reduced rates – for these groups to stage fundraising concerts, hula and other dance programs, cultural pageants and festivals, student plays and music concerts, and other events. Many of these organizations would not otherwise be able to afford bringing their show to a professional stage like Hawaii Theatre. We offer ticket discounts to military, seniors and students.

HTC's affordably priced educational programming for PreK-12 students provides high-quality performing arts experiences to meet DOE content standards in literacy and fine arts; enhance student learning; and supplement school curricula in the area of performing arts. Tickets are just \$5 for children, \$10 for adults and children under three are free. We also offer one free ticket to a teacher, per every 20 students. In the 2016-17 school year, our education programs reached more than 11,500 participants, with students from Title I public schools accounting for one-third of the student participation. This included nearly 100 band students from three nearby Title I middle schools and 1,200 family members and peers who participated in the Punchbowl Music Festival, an annual showcase established and hosted at no cost by Hawaii Theatre Center since 2007.

Hawaii Theatre also partners with local groups to provide shows for the public, with no admission fee, including the annual Combined Military Band Appreciation concert, Honolulu's largest military appreciation event.

With dozens of licensed users bringing their events to the Hawaii Theatre each year, and an annual average of nearly 90,000 patrons attending these shows, the need to upgrade our lighting infrastructure to meet modern, energy-saving technology standards is becoming ever more urgent. Our business neighbors and the community in general benefit each time we have a performance on our stage.

Providing a safe, technically superb and sustainable venue for presenters and patrons will enable Hawaii Theatre Center to continue to serve as the economic development catalyst for its neighborhood, enhance student learning, support other nonprofit groups, sustain an historic landmark, and greatly enrich the lives of Hawaii residents and visitors well into the 21<sup>st</sup> century.

4.  Describe the target population to be served; and

The project will benefit approximately 90,000 Hawaii residents and visitors to Oahu each year, including more than 10,000 students and their families; and an average of 30-40 presenters each year who bring their events to our Theatre, including nonprofit arts, civic and community organizations that use the Theatre at greatly reduced rates.

5.  Describe the geographic coverage.

Located in downtown Honolulu/ Chinatown, Hawaii Theatre Center's primary geographic reach is the Island of Oahu, although Theatre patrons and performing artists come from across the state to attend many of the local, national and international shows that do not travel to the other islands, or to share their talents with Oahu's larger audience base.

The greatest impact of Hawaii Theatre is with individual patrons on the Island of Oahu. We have a database of more than 30,000 individual patrons on Oahu and patrons found on every major Hawaiian island, as well as the US mainland, Japan, Germany, Korea, China, the Philippines and Europe.

## **II. Service Summary and Outcomes**

The Service Summary shall include a detailed discussion of the applicant's approach to the request. The applicant shall clearly and concisely specify the results, outcomes, and measures of effectiveness from this request. The applicant shall:

1.  Describe the scope of work, tasks and responsibilities;

The Hawaii Theatre Center will complete the retrofit of the expensive, obsolete, and inefficient incandescent lighting technology used in the lighting throughout (interior and exterior) the historic Hawaii Theatre with proven, energy efficient, long lasting LED (Light Emitting Diode) technologies.

Hawaii Theatre's Emergency Lighting Transfer System will be replaced with top of the line battery technology that will be integrated into the solar systems at the facility resulting in a 100% renewable source for our emergency systems.

To implement the completion of the lighting retrofit and the installation of a new emergency lighting transfer system, the Theatre will need to shut down for a period of about three weeks.

**Project Scope**

1. Upgrade remainder of architectural systems in the theatre which did not get addressed in 2018. This includes
  - a. Chair and Wall Mounted Isle Lights
  - b. Catwalk / Back Stage Safety, Running and Work Lights
  - c. Arch Illumination
  - d. In House Lattice Grill Illumination
  - e. General Illumination in
    - i. Auditorium
    - ii. Lobby
    - iii. Dressing Rooms and Back Stage Common Areas
    - iv. Administration and Box Office
    - v. Public Area Restrooms
    - vi. Function Room / Weyand Room
  - f. Bethel Street Façade
  - g. Marquee
  - h. Platform Hominization with 2017 Theatrical Lighting Retrofit and 2018 Architectural Lighting Retrofit
2. Upgrade Emergency Lighting Transfer System to a new technology which integrates with the 2017 Theatrical Lighting Retrofit and 2018 Architectural Lighting Retrofit and is 100% powered through renewable resources
3. Energy savings of at least 50% per fixture.

**High-Level Requirements for Vendors**

1. Proven track record in lighting design which demonstrates the understanding of the unique challenges brought on when implementing systems which are mixed use theatrical, architectural and entertainment venue.
2. Proven track records in implementing complex, multi-faceted control and lighting systems on time and in budget.
3. Demonstrated ability to design and implement architectural lighting retrofits in historical buildings that maintain (and improve upon - subject to approval) the original design intent. Including but not limited to the ability to understand and deliver on continuity of original source for:
  - a. Delivered Lumens at
    - i. Source
    - ii. Nadir.
    - iii. Target Plane
  - b. Color Temperature at
    - i. Source
    - ii. Target Plane
  - c. CRI, or percentage there of
  - d. Black Body Curve Positioning

e. Beam Characteristics at

i. Field

ii. Angle

4. Demonstrated ability to integrate architectural control into theatrical lighting control systems
5. Demonstrated ability to integrate theatrical controls into architectural lighting control systems
6. Demonstrated understanding of and competence in the implementation of ArtNet / DMX over ethernet
7. Demonstrated understanding of networked lighting control systems
8. Demonstrated ability to design and integrate architectural control systems which operate on ethernet and fiber networks for communications
9. Demonstrated ability to design and integrate architectural lighting systems which can manage diverse load handling of 0-10v, DMX, Relay, ELV and TRIAC within a cohesive system
10. Demonstrated ability to design and implement the programming necessary for timed events and archtainment displays
11. Demonstrated knowledge and proven continuing education which point towards a complete understanding of today's lighting market offerings including:
  - a. components
  - b. fixtures
  - c. to market strategies
  - d. logistics
  - e. staging
  - f. installation
  - g. commissioning and
  - h. control solutions
12. A complete audit of Hawaii Theatres lighting systems including a. Complete reports identifying
  - i. Findings
  - ii. Analysis
  - iii. Product selection with attributes
  - iv. Anticipated ROIs
  - v. Developed reasoning's for conclusions and selections.
13. A complete audit Hawaii Theatres Emergency Lighting Transfer System including a. Complete with reports identifying
  - i. Findings
  - ii. Analysis
  - iii. Product selection with attributes
  - iv. Initial integration schedule
  - v. Developed reasoning's for conclusions and selections

14. Detailed narrative addressing integration with the theatrical lighting control systems of the Hawaii Theatre.
15. Detailed comprehensive narrative on proposed installation procedures with cost break outs that clearly identify
  - a. Component costs
    - i. By Item
      1. Lump Sum quotes are not acceptable
  - b. Logistic Costs
  - c. Installation Labor Costs
    - i. By Man/Hour Type with fees
      1. Lump Sum quotes are not acceptable

The new system must include the following:

1. A retrofit solution for all un-retrofitted architectural lighting at the Hawaii Theatre Center
2. A retrofit solution for all the Emergency Lighting Transfer System at the Hawaii Theatre Center. The Emergency Lighting Transfer System must be run completely from renewable resources.

#### **Deliverables**

- Narrative which lays out the integration of the proposed systems and fixtures into the existing systems at the Hawaii Theatre
- Fixture Schedule – Complete with Cut Sheets and Identified Product Nuances
- Fixture Cut Sheet Package
- Emergency Lighting Transfer Switch Cut Sheet Package
- Emergency Lighting Transfer Power Source Cut Sheet Package
- Network Schedule – Complete with Cut Sheets and Identified Product Nuances
- Network Cut Sheet Package
- Line Drawings for Network
- Line Drawings for Emergency Lighting Transfer System
- Architectural Drawings Noting New Fixtures
  - New Drawings Must coordinate with fixture schedule nomenclature

#### **Affected Parties**

The Hawaii Theatre Center, its staff, patrons and board.  
The General Public of Honolulu.  
Touring Events coming to Honolulu.  
Local Technical Staff.



2.  Provide a projected annual timeline for accomplishing the results or outcomes of the service;

The project schedule is contingent on grant approval and subject to change in deference to the Theatre's rehearsal/performance schedule.

Project Start	January 1, 2019	Day 1
Reconfirm Equipment Pricing	January 1-February 28, 2019	8 Weeks
Vendors Contracted	March 1-22, 2019	3 Weeks
Equipment Ordered	March 22-April 25, 2019	5 Weeks
Equipment Shipped, Received and Inventoried	April 26-July 28, 2019	13 Weeks
Theatre Closure / Lighting Retrofitting	July 29-August 18, 2019	3 Weeks

3.  Describe its quality assurance and evaluation plans for the request. Specify how the applicant plans to monitor, evaluate, and improve their results; and

Hawaii Theatre Center will monitor and evaluate the project through the utilization of existing base line metrics which show:

- Lighting systems power consumption
- Lighting systems power consumption as it relates to stress on HVAC systems
- Light levels in relation to safety codes
- Light levels in relation to attendee safety and satisfaction
- Effectiveness of emergency lighting systems
- Labor in relation to lighting systems maintenance
- Ease of Operation of Lighting & Emergency Lighting Systems

HTC will track and record all changes which affect the above metrics and alter programming and processes to achieve optimization from the new systems

4.  List the measure(s) of effectiveness that will be reported to the State agency through which grant funds are appropriated (the expending agency). The measure(s) will provide a standard and objective way for the State to assess the program's achievement or accomplishment. Please note that if the level of appropriation differs from the amount included in this application that the measure(s) of effectiveness will need to be updated and transmitted to the expending agency.

- Lighting systems power consumption – Before and After Program
- Lighting systems power consumption as it relates to stress on HVAC systems – Before and After Program
- Light levels in relation to safety codes – Before and After Program

- Effectiveness of emergency lighting systems – Before and After Program
- Labor in relation to lighting systems maintenance - Before and After Program
- Ease of Operation of Lighting & Emergency Lighting Systems - Before and After Program

**III. Financial**

**Budget**

1.  The applicant shall submit a budget utilizing the enclosed budget forms as applicable, to detail the cost of the request.
  - a. Budget request by source of funds ([Link](#))
  - b. Personnel salaries and wages ([Link](#))
  - c. Equipment and motor vehicles ([Link](#))
  - d. Capital project details ([Link](#))
  - e. Government contracts, grants, and grants in aid ([Link](#))
  
2.  The applicant shall provide its anticipated quarterly funding requests for the fiscal year 2019.

Quarter 1	Quarter 2	Quarter 3	Quarter 4	Total Grant
\$0	\$648,061	\$0	\$0	\$0

3.  The applicant shall provide a listing of all other sources of funding that they are seeking for fiscal year 2019.  
Not applicable
  
4.  The applicant shall provide a listing of all state and federal tax credits it has been granted within the prior three years. Additionally, the applicant shall provide a listing of all state and federal tax credits they have applied for or anticipate applying for pertaining to any capital project, if applicable.  
Not applicable
  
5.  The applicant shall provide a listing of all federal, state, and county government contracts, grants, and grants in aid it has been granted within the prior three years and will be receiving for fiscal year 2019 for program funding.  
Not applicable to this specific project.
  
6.  The applicant shall provide the balance of its unrestricted current assets as of December 31, 2017.  
  
The balance of Hawaii Theatre Center’s unrestricted current assets as of December 31, 2017 was \$13,962,171.80.

#### **IV. Experience and Capability**

##### **1. Necessary Skills and Experience**

The applicant shall demonstrate that it has the necessary skills, abilities, knowledge of, and experience relating to the request. State your experience and appropriateness for providing the service proposed in this application. The applicant shall also provide a listing of verifiable experience of related projects or contracts for the most recent three years that are pertinent to the request.

The Hawaii Theatre Center has operated successfully since it re-opened in 1996. It is a 501(c)(3) nonprofit with an annual operating budget for fiscal year 2017-18 of \$1.6 million. It is operated by a full-time staff of nine and 12 part-time box office representatives and backstage production crew. It is governed by a 26-member board of directors comprised of respected business and community leaders with a wide range of expertise. The board has demonstrated a commitment to the mission of the Hawaii Theatre Center. The board is responsible for major policy decisions, strategic planning, fiscal responsibility and overseeing the President and CEO. The current 2017-2018 Board of Directors include:

Beth Whitehead	Board Chair	Executive VP & Chief Administrative Officer, American Savings Bank
Rick Fried	Vice Chair	Attorney, Cronin Fried Sekiya Kekina & Fairbanks
Cathy Lee	Vice Chair	President and Designer, RSVPstyle
Jerry Mount	Vice Chair	Founder & CEO, Fair Horizon Capital
Paula Sussex	Vice Chair	Owner and president, Step Three Ltd., dba Sandal Tree and Walking in Paradise
Son-Jai Pak	Secretary	VP Human Services, Alexander & Baldwin, Inc.
Michael Ching	Treasurer	Chief Financial Officer, First Hawaiian Bank
Peter Apo	Director	President, The Peter Apo Company
Beau Bassett	Director	Attorney, Pitluck Kido & Aipa
Cory Beall	Director	President, The Beall Corporation
Melissa Blake	Director	Owner & President, Blake Entertainment LLC
Greg Grauman	Director	VP of Enrollment Management, Hawaii Pacific University

Marc Haine	Director	Founder, The Floor Store Hawaii
Sean Morris	Director	President, Advertising Associates International LLC
Don Murphy	Director	Owner, Murphy's Bar & Grill
Deena Nichols	Director	VP – Hawaii & Guam, Macy's
Jon Olson	Director	Host and Producer, Next Stoop
Jeffrey Portnoy	Director	Partner, Cades Schutte LLP
Michelle Richardson	Director	Director of Sales, Benn Pacific Group
Clint Schroeder	Director	President, Hagadone Printing Company
Karl Stahlkopf, PhD	Director	Partner, Kairos Energy Capital
Ligaya Stice, MD	Director	Physician, Kapiolani Medical Center for Women & Children
Tracy Tanaka	Director	Founding Member, Schneider Tanaka Radovich Andrew & Tanaka
Dana Tokioka	Director	Account Executive, Atlas Insurance Agency
Wanda Watumull	Director	Community Volunteer
Andrew Yani	Director	Co-Founder & Principal, Kinaole Capital Partners LLC

The President and CEO, reports to the Board of Directors, and is responsible for all daily operations of the organization, including programs, facilities, programming, personnel and real estate.

The Theatre staff has a broad scope of skills and knowledge to administer and initiate programming and maintain the facilities. The Theatre has an exemplary history of exhibiting the capacity, skills, knowledge and experience necessary to complete major capital projects that comply with local building codes and preservation standards in a fiscally efficient and responsible manner.

Major capital projects include:

- 1996 Completed \$21 million Hawaii Theatre interior restoration
- 2005 Completed \$11.5 million Hawaii Theatre exterior restoration
- 2006 Completed exterior renovation of the Theatre's Nuuanu Avenue properties
- 2009 Completed \$600,000 Hawaii Theatre roof replacement
- 2010 Completed \$1.03 million Hawaii Theatre HVAC (air conditioning) installation
- 2011 Completed sound system upgrade and cyclorama (backdrop) LED lights
- 2013 Completed the installation of a digital film projection system
- 2017 Completed the replacement of the stage lights
- 2018 Preparing to retrofit the interior lights and dimming system, pending contract

2.  **Facilities**

The applicant shall provide a description of its facilities and demonstrate its adequacy in relation to the request. If facilities are not presently available, describe plans to secure facilities.

Hawaii Theatre Center is a state-of-the-art 1,400-seat performance center with a 16,010 square foot footprint that is listed on both the State and National Historic Registers.

In planning for the restoration and renovation of the historic Theatre, architects were very mindful of all ADA requirements. The Hawaii Theatre Center underwent a complete Site Survey in October 1997 by an independent third party contractor and any deficiencies were identified and corrected. The Theatre has taken special measures to insure that wheelchair and hearing disabled patrons are able to enjoy performances by providing:

- Wheelchair and companion seating
- ADA signage
- Signed performances
- Infrared assisted hearing devices
- Sensitivity training for ushers

**V. Personnel: Project Organization and Staffing**

1.  **Proposed Staffing, Staff Qualifications, Supervision and Training**

The applicant shall describe the proposed staffing pattern and proposed service capacity appropriate for the viability of the request. The applicant shall provide the qualifications and experience of personnel for the request and shall describe its ability to supervise, train and provide administrative direction relative to the request.

**Elizabeth O'Brien - Director of Programming**

O'Brien will be responsible for coordinating the lighting retrofit project with the programming schedule. She will also schedule the production manager and stage tech for labor. O'Brien will serve as the liaison with the contracted lighting vendor.

O'Brien joined HTC in 2010. She was promoted to director of audience services in 2015 with responsibilities for front of the house operations, and in 2016 was named director of programming, responsible for contracting and licensing all productions at the Theatre; marketing and promotion of all HTC Presents shows; and managing front of house, backstage and box office staff. Born and raised in Hawaii, she studied film and theatre on the mainland and performed around the US, Canada and Europe.

**Production Manager - Robert S. Lee**

Lee will be responsible for allowing the vendors access into the Theatre and labor, as necessary.

Lee joined Hawaii Theatre in 2011 as a stage tech and has since been promoted to production manager.

**Stage Tech - Vince Liem**

Liem will be responsible for allowing the vendors access into the Theatre and labor, as necessary.

Liem has worked periodically with the Hawaii Theatre since 2005 in various roles, including stage tech, assistant stage manager, and head projectionist. He is a technician/ electrician by trade.

**Accounting**

This position, as an independent contractor, is held by Carr, Gouveia + Associates, CPAs, Inc. They are responsible for generating the monthly financials and balance statements of the Hawaii Theatre Center.

**Contract Positions:**

**Local Lighting Vendor / Lighting Contractor**

This position will be contracted for the installation of new lighting fixtures, control systems, emergency transfer systems and solar integration. The contractor will specify the fixtures, design the integration into the Theatre's current architecture and facilitate the installation, programming and commissioning of the systems.

**Electrical Engineer Hawaii Certified**

This position will be contracted to assess the current electrical and lighting systems to ensure the necessary power/connectivity is in place.

2.  **Organization Chart**

The applicant shall illustrate the position of each staff and line of responsibility/supervision. If the request is part of a large, multi-purpose organization, include an organization chart that illustrates the placement of this request.

See Attachment B

3.  **Compensation**

The applicant shall provide the annual salaries paid by the applicant to the three highest paid officers, directors, or employees of the organization by position.

Amy Alred-Bennett, Director of Donor Services - \$46,000

Elizabeth O'Brien, Director of Programming - \$78,000

Suzanne Watanabe Lai, Director of Development - \$78,000

**VI. Other**

1.  **Litigation**

The applicant shall disclose any pending litigation to which they are a party, including the disclosure of any outstanding judgement. If applicable, please explain.

No pending litigation.

2.  **Licensure or Accreditation**

The applicant shall specify any special qualifications, including but not limited to licensure or accreditation that the applicant possesses relevant to this request.

The historic Hawaii Theatre is listed on the State and National Historic Registers and is a member of the League of Historic American Theatres, the Association of Performing Arts Presenters, and the Hawaii Visitors and Convention Bureau.

1997 *Overall and Grand Hawaii Renaissance Award* winner from the Building Industry Association

2005 Recognized as the *Outstanding Historic Theatre in America* by the League of Historic American Theatres

2005 *Kukulu Hale Award of Excellence: Restoration Project* from the National Association of Industrial and Office Properties, Hawaii Chapter

2006 *National Preservation Honor Award* from the National Trust for Historic Preservation

2006 *Concrete Achievement Award for Concrete Structure Built Before 1940 and Still in Use* given by the Hawaiian Cement Company

2006 First recipient of the *Small Nonprofit Torch Award for Business Ethics* by the Better Business Bureau of Hawaii

2007 The Hawaii Theatre was voted *Best Live Theatre* by the Honolulu Star Bulletin.

3.  **Private Educational Institutions**

The applicant shall specify whether the grant will be used to support or benefit a sectarian or non-sectarian private educational institution. Please see Article X, Section 1, of the State Constitution for the relevance of this question.

Grant will not be used to support or benefit a sectarian or non-sectarian private educational institution.

4.  **Future Sustainability Plan**

The applicant shall provide a plan for sustaining after fiscal year 2018-19 the activity funded by the grant if the grant of this application is:

- (a) Received by the applicant for fiscal year 2018-19, but
- (b) Not received by the applicant thereafter.

Hawaii Theatre Center will continue its efforts to raise funds from individuals and foundations through its annual fundraising programs. If funding is not secured, or not in the full amount, Hawaii Theatre may need to take a loan or postpone the project until funds can be raised.

5.  **Certificate of Good Standing (If the Applicant is an Organization)**

If the applicant is an organization, the applicant shall submit one (1) copy of a certificate of good standing from the Director of Commerce and Consumer Affairs that is dated no earlier than December 1, 2017.

See Attachment C

6.  **Declaration Statement**

The applicant shall submit a declaration statement affirming its compliance with Section 42F-103, Hawaii Revised Statutes. ([Link](#))

7.  **Public Purpose**

The applicant shall specify whether the grant will be used for a public purpose pursuant to Section 42F-102, Hawaii Revised Statutes. ([Link](#))



## BUDGET REQUEST BY SOURCE OF FUNDS

Period: July 1, 2018 to June 30, 2019

Applicant: Hawaii Theatre Center

BUDGET CATEGORIES	Total State Funds Requested (a)	Total Federal Funds Requested (b)	Total County Funds Requested (c)	Total Private/Other Funds Requested (d)
<b>A. PERSONNEL COST</b>				
1. Salaries				
2. Payroll Taxes & Assessments				
3. Fringe Benefits				
<b>TOTAL PERSONNEL COST</b>				
<b>B. OTHER CURRENT EXPENSES</b>				
1. Airfare, Inter-Island				
2. Insurance				
3. Lease/Rental of Equipment				
4. Lease/Rental of Space				
5. Staff Training				
6. Supplies				
7. Telecommunication				
8. Utilities				
9				
10				
11				
12				
13				
14				
15				
16				
17				
18				
19				
20				
<b>TOTAL OTHER CURRENT EXPENSES</b>				
<b>C. EQUIPMENT PURCHASES</b>				
<b>D. MOTOR VEHICLE PURCHASES</b>				
<b>E. CAPITAL</b>	648,061			
<b>TOTAL (A+B+C+D+E)</b>	<b>648,061</b>			
<b>SOURCES OF FUNDING</b>		Budget Prepared By:		
(a) Total State Funds Requested	648,061	Gregory D. Dunn / President and CEO		808-791-1300
(b) Total Federal Funds Requested	0			Phone
(c) Total County Funds Requested	0			1/16/18
(d) Total Private/Other Funds Requested	0	Signature of Authorized Official		Date
<b>TOTAL BUDGET</b>	<b>648,061</b>	Gregory D. Dunn / President and CEO Name and Title (Please type or print)		

## BUDGET JUSTIFICATION - PERSONNEL SALARIES AND WAGES

Period: July 1, 2018 to June 30, 2019

Applicant: Hawaii Theatre Center

POSITION TITLE	FULL TIME EQUIVALENT	ANNUAL SALARY A	% OF TIME ALLOCATED TO GRANT REQUEST B	TOTAL STATE FUNDS REQUESTED (A x B)
Not Applicable				\$ -
				\$ -
				\$ -
				\$ -
				\$ -
				\$ -
				\$ -
				\$ -
				\$ -
				\$ -
				\$ -
				\$ -
				\$ -
				\$ -
				\$ -
				\$ -
<b>TOTAL:</b>				
<b>JUSTIFICATION/COMMENTS:</b>				

# BUDGET JUSTIFICATION - EQUIPMENT AND MOTOR VEHICLES

Period: July 1, 2018 to June 30, 2019

Applicant: Hawaii Theatre Center

DESCRIPTION EQUIPMENT	NO. OF ITEMS	COST PER ITEM	TOTAL COST	TOTAL BUDGETED
Not applicable			\$ -	
			\$ -	
			\$ -	
			\$ -	
			\$ -	
<b>TOTAL:</b>				
JUSTIFICATION/COMMENTS:				

DESCRIPTION OF MOTOR VEHICLE	NO. OF VEHICLES	COST PER VEHICLE	TOTAL COST	TOTAL BUDGETED
			\$ -	
			\$ -	
			\$ -	
			\$ -	
			\$ -	
<b>TOTAL:</b>				
JUSTIFICATION/COMMENTS:				

## BUDGET JUSTIFICATION - CAPITAL PROJECT DETAILS

Period: July 1, 2018 to June 30, 2019

Applicant: Hawaii Theatre Center

FUNDING AMOUNT REQUESTED						
TOTAL PROJECT COST	ALL SOURCES OF FUNDS RECEIVED IN PRIOR YEARS		STATE FUNDS REQUESTED	OF FUNDS REQUESTED	FUNDING REQUIRED IN SUCCEEDING YEARS	
	FY: 2016-2017	FY: 2017-2018	FY:2018-2019	FY:2018-2019	FY:2019-2020	FY:2020-2021
PLANS						
LAND ACQUISITION						
DESIGN						
CONSTRUCTION	300000	500000	648061	0	0	0
EQUIPMENT						
<b>TOTAL:</b>	<b>300000</b>	<b>500000</b>	<b>648,061</b>		0	0

**JUSTIFICATION/COMMENTS:**

See attachment A for construction details. \$500,000 was awarded to Hawaii Theatre Center for FY17-18 to replace a portion of the interior lights - pending contract. The \$300,000 awarded in FY16-17 was used to replace the stage lights.

**GOVERNMENT CONTRACTS, GRANTS, AND / OR GRANTS IN AID**

Applicant: Hawaii Theatre Center

Contracts Total: 800,000

	<b>CONTRACT DESCRIPTION</b>	<b>EFFECTIVE DATES</b>	<b>AGENCY</b>	<b>GOVERNMENT ENTITY (U.S. / State / Haw / Hon / Kau / Mau)</b>	<b>CONTRACT VALUE</b>
1	Stage Light Replacement	4/27/2017-12/31/2018	Department of Accounting and General Services	State of Hawaii	300,000
2	A Portion of Interior and Exterior Lighting Replacement	Pending Contract	Department of Accounting and General Services	State of Hawaii	500,000
3					
4					
5					
6					
7					
8					
9					
10					
11					
12					
13					
14					
15					
16					
17					
18					
19					
20					
21					
22					
23					
24					
25					
26					
27					
28					
29					
30					

**DECLARATION STATEMENT OF  
APPLICANTS FOR GRANTS PURSUANT TO  
CHAPTER 42F, HAWAII REVISIED STATUTES**

The undersigned authorized representative of the applicant certifies the following:

- 1) The applicant meets and will comply with all of the following standards for the award of grants pursuant to Section 42F-103, Hawaii Revised Statutes:
  - a) Is licensed or accredited, in accordance with federal, state, or county statutes, rules, or ordinances, to conduct the activities or provide the services for which a grant is awarded;
  - b) Complies with all applicable federal and state laws prohibiting discrimination against any person on the basis of race, color, national origin, religion, creed, sex, age, sexual orientation, or disability;
  - c) Agrees not to use state funds for entertainment or lobbying activities; and
  - d) Allows the state agency to which funds for the grant were appropriated for expenditure, legislative committees and their staff, and the auditor full access to their records, reports, files, and other related documents and information for purposes of monitoring, measuring the effectiveness, and ensuring the proper expenditure of the grant.
- 2) If the applicant is an organization, the applicant meets the following requirements pursuant to Section 42F-103, Hawaii Revised Statutes:
  - a) Is incorporated under the laws of the State; and
  - b) Has bylaws or policies that describe the manner in which the activities or services for which a grant is awarded shall be conducted or provided.
- 3) If the applicant is a non-profit organization, it meets the following requirements pursuant to Section 42F-103, Hawaii Revised Statutes:
  - a) Is determined and designated to be a non-profit organization by the Internal Revenue Service; and
  - b) Has a governing board whose members have no material conflict of interest and serve without compensation.

Pursuant to Section 42F-103, Hawaii Revised Statutes, for grants used for the acquisition of land, when the organization discontinues the activities or services on the land acquired for which the grant was awarded and disposes of the land in fee simple or by lease, the organization shall negotiate with the expending agency for a lump sum or installment repayment to the State of the amount of the grant used for the acquisition of the land.

Further, the undersigned authorized representative certifies that this statement is true and correct to the best of the applicant's knowledge.

Hawaii Theatre Center

\_\_\_\_\_  
(Typed Name of Individual or Organization)

\_\_\_\_\_  
(Signature)

Gregory D. Dunn

\_\_\_\_\_  
(Typed Name)

Rev 12/2/16

1/18/2018  
\_\_\_\_\_  
(Date)

President and CEO

\_\_\_\_\_  
(Title)

HAWAII THEATRE CENTER  
ARCHITECTURAL LIGHTING RETROFIT AND EMERGENCY TRANSFER SYSTEM OVERHAUL  
ATTACHMENT A

Architectural Lighting													
Qty.	Item Description	Unit Cost	Remarks	S/H	Increment Charged	Item Subtotal	Tax Per Item	Item Total w/ Tax					
<b>Chair, Isle and Wall Mounted Isle Lights</b>													
140	MP Lighting 2400K Light Engine w/ Driver 1 w	\$ 82.00	80,000 Hour LED Warm White For Chair Isle Lights	X	1	\$ 11,480.00	\$ 540.94	\$ 12,020.94					
70	MP Lighting 2700K Light Engine w/ Driver 2 w	\$ 82.00	80,000 Hour LED Warm White For Inset Isle Lighting	X	1	\$ 5,740.00	\$ 270.47	\$ 6,010.47					
25	Hour Demolition	\$ 83.89	Remove Old Components		1	\$ 2,097.25	\$ 98.82	\$ 2,196.07					
40	Hour Installation	\$ 83.89	Install New Components		1	\$ 3,355.60	\$ 158.12	\$ 3,513.72					
<b>Catwalk / Back Stage Safety, Running and Work Lights</b>													
120	EDS Blues System Stage & Catwalk	\$ 218.00	Blue Run Lights throughout Theatre for OSHA Compliance	X	1	\$ 26,160.00	\$ 1,232.66	\$ 27,392.66					
2	19" Rack Mount Control Interfaces Blues System Control	\$ 3,176.25	Control Interface for Blue Run Lights	X	1	\$ 6,352.50	\$ 299.33	\$ 6,651.83					
28	White Flood 3000k Catwalk	\$ 1,254.91	LED White work lights in Catwalk for OSHA Compliance/Energy Savings	X	1	\$ 35,137.48	\$ 1,655.68	\$ 36,793.16					
10	Hour Remove Frayed Wiring C13 Contractor	\$ 110.00	Power/Data Supply (PDS) For RGB Cove Fixture	X	1	\$ 1,100.00	\$ 51.83	\$ 1,151.83					
1	Installation Components	\$ 7,083.76	Installation Mounting, Connections, Data	X	1	\$ 7,083.76	\$ 333.79	\$ 7,417.55					
8	Hour Demolition	\$ 83.89	Remove Old Components		1	\$ 673.12	\$ 31.62	\$ 702.74					
60	Hour C13 Hawaii Electrical Contractor	\$ 110.00	Install New Components		1	\$ 6,600.00	\$ 310.99	\$ 6,910.99					
60	Hour Installation	\$ 83.89	Install New Components		1	\$ 5,033.40	\$ 237.17	\$ 5,270.57					
<b>Arch Illumination</b>													
54	2400/2700K LED White Light Cove Fixture	\$ 225.00	Replace current 8'x70w Lamp Bay, 8 Bay Total	X	1	\$ 12,150.00	\$ 572.51	\$ 12,722.51					
1	DMX to ELV Dimming	\$ 1,000.00	White Cove Lighting Dimming	X	1	\$ 1,000.00	\$ 47.12	\$ 1,047.12					
1	Installation Components	\$ 607.50	Installation Mounting, Connections, Data	X	1	\$ 607.50	\$ 28.63	\$ 636.13					
20	Hour Demolition	\$ 83.89	Remove Old Components		1	\$ 1,677.80	\$ 79.06	\$ 1,756.86					
20	Hour Installation	\$ 83.89	Install New Components		1	\$ 1,677.80	\$ 79.06	\$ 1,756.86					
<b>In House Lattice Grill Illumination</b>													
40	2400/2700K LED White Light Cove Fixture	\$ 285.23	For Grill Work In House - 8' Per Grill x 8 Grills	X	1	\$ 11,409.20	\$ 537.60	\$ 11,946.80					
8	Leader Cable For Grazing Fixtures	\$ 18.32	From Power Source to Fixture - 1 Per Grill	X	1	\$ 146.56	\$ 6.91	\$ 153.47					
2	DMX to ELV Dimming	\$ 1,000.00	White LED Dimming	X	1	\$ 2,000.00	\$ 94.24	\$ 2,094.24					
20	Hour Demolition	\$ 83.89	Remove Old Components		1	\$ 1,677.80	\$ 79.06	\$ 1,756.86					
40	Hour Installation	\$ 83.89	Install New Components		1	\$ 3,355.60	\$ 158.12	\$ 3,513.72					
<b>Auditorium Architectural Downlights</b>													
7	8" LED - Narrow Spot 10" -Soft Satin Pewter Reflector- 27/30K	\$ 712.70	Replace 7 Arch Downlights - Exact Spec TBD	X	1	\$ 4,988.90	\$ 235.08	\$ 5,223.98					
7	Stopped Calling Adaptors	\$ 75.19	For Arch Downlights	X	1	\$ 526.33	\$ 24.80	\$ 551.13					
8	8" LED - Narrow 15" -Soft Satin Pewter Reflector- 27/30K	\$ 712.70	Replace 8 First AP Downlights - Exact Spec TBD	X	1	\$ 5,701.60	\$ 268.66	\$ 5,970.26					
4	8" LED - Narrow 15" -Soft Satin Pewter Reflector-27/30K	\$ 712.70	Replace 4 Second AP Downlights - Exact Spec TBD	X	1	\$ 2,850.80	\$ 134.33	\$ 2,985.13					
6	8" LED - Narrow 15" -Soft Satin Pewter Reflector-27/30K	\$ 712.70	Replace 6 Third AP Downlights - Exact Spec TBD	X	1	\$ 4,276.20	\$ 201.49	\$ 4,477.69					
10	8" LED - N Flood 30" -Soft Satin Pewter Reflector- 27/30K	\$ 712.70	Replace 10 Plenum Downlights- Exact Spec TBD	X	1	\$ 7,127.00	\$ 335.82	\$ 7,462.82					
1	DMX to ELV Dimming	\$ 3,500.00	White LED Dimming	X	1	\$ 3,500.00	\$ 164.92	\$ 3,664.92					
18	Hour Demolition	\$ 83.89	Remove Old Components		1	\$ 1,510.02	\$ 71.15	\$ 1,581.17					
18	Hour Installation	\$ 83.89	Install New Components		1	\$ 1,510.02	\$ 71.15	\$ 1,581.17					
<b>Under Balcony Illumination</b>													
64	RGB Color Changing LED Light Engines	\$ 515.00	18 Domes - 4 Per Dome	X	1	\$ 32,960.00	\$ 1,553.08	\$ 34,513.08					
64	Heat Sink Units for LED Light Engines	\$ 23.45	Heat Sink for RGB Light Engine	X	1	\$ 1,500.80	\$ 70.72	\$ 1,571.52					
11	PDS 150w Low Voltage Driver - DMX, Line Voltage In	\$ 365.94	Power Data Supply for RGB Components - 8 Per Supply	X	1	\$ 4,025.34	\$ 189.67	\$ 4,215.01					
1	Installation Components	\$ 1,924.31	Design/Engineer/Test, Exact Balcony	X	1	\$ 1,924.31	\$ 90.67	\$ 2,014.98					
20	Hour Demolition	\$ 83.89	Remove Old Components		1	\$ 1,677.80	\$ 79.06	\$ 1,756.86					
32	Hour Installation	\$ 83.89	Install New Components		1	\$ 2,684.48	\$ 126.49	\$ 2,810.97					
<b>Dressing Rooms and Back Stage Bathrooms - Downlights</b>													
29	700 Lumen Wide Optic 2700K LED Module	\$ 249.63	Replacement for 80w Lamp in Ceiling Domes	X	1	\$ 7,239.27	\$ 341.11	\$ 7,580.38					
29	Drivers for Modules	\$ 58.23	Driver for LED Module	X	1	\$ 1,688.67	\$ 79.57	\$ 1,768.24					
29	Heat Sink for Module	\$ 23.45	Heat Sink for Module	X	1	\$ 680.05	\$ 32.04	\$ 712.09					
20	Hour Demolition	\$ 87.50	Remove Old Components		1	\$ 1,750.00	\$ 82.46	\$ 1,832.46					
20	Hour Installation	\$ 87.50	Install New Components		1	\$ 1,750.00	\$ 82.46	\$ 1,832.46					
<b>Stage Underpass Hallway</b>													
67	2500K LED White Light Linear Fixture	\$ 30.00	Replacement for Linear Fluorescent	X	1	\$ 2,010.00	\$ 94.71	\$ 2,104.71					
1	Installation Components	\$ 100.50	Installation Mounting, Connections, Data	X	1	\$ 100.50	\$ 4.74	\$ 105.24					
2	Hour Demolition	\$ 87.50	Remove Old Components		1	\$ 175.00	\$ 8.25	\$ 183.25					
2	Hour Installation	\$ 87.50	Install New Components		1	\$ 175.00	\$ 8.25	\$ 183.25					
<b>First Floor Lobby Downlights</b>													
2	6" LED - N Flood 30" -Soft Satin Pewter Reflector- 27/30K	\$ 518.88	Downlights Outside of Bathrooms - Exact Spec TBD	X	1	\$ 1,037.76	\$ 48.90	\$ 1,086.66					
2	6" LED - N Flood 30" -Soft Satin Pewter Reflector- 27/30K	\$ 518.88	Downlights by Sponsor Booth - Exact Spec TBD	X	1	\$ 1,037.76	\$ 48.90	\$ 1,086.66					
2	Hour Demolition	\$ 87.50	Remove Old Components		1	\$ 175.00	\$ 8.25	\$ 183.25					
2	Hour Installation	\$ 87.50	Install New Components		1	\$ 175.00	\$ 8.25	\$ 183.25					
<b>Second Floor Lobby Downlights</b>													
6	700 Lumen Wide Optic 2700K LED Module	\$ 249.63	Replacement for 80w Lamp in Ceiling Domes	X	1	\$ 1,497.78	\$ 70.58	\$ 1,568.36					
6	Drivers for Modules	\$ 58.23	Driver for LED Module	X	1	\$ 349.38	\$ 16.46	\$ 365.84					
6	Heat Sink for Module	\$ 23.45	Heat Displacement	X	1	\$ 140.70	\$ 6.63	\$ 147.33					
10	4" LED - N Flood 30" -Soft Satin Pewter Reflector- 2700K	\$ 388.56	Replacement for 75w Downlight over Bars	X	1	\$ 3,885.60	\$ 183.09	\$ 4,068.69					
8	Hour Demolition	\$ 87.50	Remove Old Components		1	\$ 700.00	\$ 32.98	\$ 732.98					
8	Hour Installation	\$ 87.50	Install New Components		1	\$ 700.00	\$ 32.98	\$ 732.98					
<b>Restrooms - Public Area</b>													
25	700 Lumen Wide Optic 2700K LED Module	\$ 249.63	Replacement for 80w Lamp in Ceiling Domes	X	1	\$ 6,240.75	\$ 294.06	\$ 6,534.81					
29	Drivers for Modules	\$ 58.23	Driver for LED Module	X	1	\$ 1,688.67	\$ 79.57	\$ 1,768.24					
29	Heat Sink for Module	\$ 23.45	Heat Sink for Module	X	1	\$ 680.05	\$ 32.04	\$ 712.09					
10	Hour Demolition	\$ 87.50	Remove Old Components		1	\$ 875.00	\$ 41.23	\$ 916.23					
10	Hour Installation	\$ 87.50	Install New Components		1	\$ 875.00	\$ 41.23	\$ 916.23					
<b>Wyand Room</b>													
10	8" LED - N Flood 30" -Soft Satin Pewter Reflector- 27/30K	\$ 712.70	Replace 250 w Downlights - Exact Spec TBD	X	1	\$ 7,127.00	\$ 335.82	\$ 7,462.82					
12	6" LED - N Flood 30" -Soft Satin Pewter Reflector- 27/30K	\$ 518.88	Replace 150 w Downlights - Exact Spec TBD	X	1	\$ 6,226.56	\$ 293.40	\$ 6,519.96					
4	ELV Wall Dimmer	\$ 68.50	Dimming by LED	X	1	\$ 274.00	\$ 12.91	\$ 286.91					
11	Hour Demolition	\$ 83.89	Remove Old Components		1	\$ 922.79	\$ 43.48	\$ 966.27					
11	Hour Installation	\$ 83.89	Install New Components		1	\$ 922.79	\$ 43.48	\$ 966.27					
<b>Bathel Street Exterior Facade</b>													
8	Color Kinetics Color Blast 12	\$ 860.69	Full Spectrum Wash Lights for Column - 2 Per Column	X	1	\$ 6,885.52	\$ 324.45	\$ 7,209.97					
12	RGB LED Linear Cove	\$ 314.82	Full Spectrum Linear Wash for Windows - 3 Per Window	X	1	\$ 3,777.84	\$ 178.01	\$ 3,955.85					
3	eW Burst LED 2700 Spot	\$ 463.00	Architectural White Accent For Crests and Pedestals	X	1	\$ 1,389.00	\$ 65.45	\$ 1,454.45					
2	DMX Data Enablers / Power Data Supply	\$ 508.00	Power/Data Supply For RGB Cove & Wash Fixtures	X	1	\$ 1,016.00	\$ 47.87	\$ 1,063.87					
1	iColor Play 3	\$ 1,167.50	Controller and Play Back w/ Atomic Clock System	X	1	\$ 1,167.50	\$ 55.01	\$ 1,222.51					
2	100' Ethernet RJ45 -> RJ45	\$ 32.50	Data Distribution From Playback to Fixtures	X	1	\$ 65.00	\$ 3.06	\$ 68.06					
3	40' Leader Cables for RGB Linear Cove	\$ 56.00	Jump Data and Power Between Windows From PCB	X	1	\$ 168.00	\$ 7.92	\$ 175.92					
8	EMT 1/2 in	\$ 26.67	Hard Wire Fixtures to Windows & Additional Exterior	X	1	\$ 213.36	\$ 10.05	\$ 223.41					
4	Jobax	\$ 2.53	Exterior Fixture Mount - Additional Needed From Existing	X	1	\$ 10.12	\$ 0.48	\$ 10.60					
1	Installation Components	\$ 660.99	Installation Mounting, Connections, Data	X	1	\$ 660.99	\$ 31.15	\$ 692.14					
20	Hour C13 Hawaii Electrical Contractor	\$ 110.00	Licensed, Insured	X	1	\$ 2,200.00	\$ 103.66	\$ 2,303.66					
25	Hour Lighting Director	\$ 83.89	Install, Program, Train, Warranty Registry	X	1	\$ 2,097.25	\$ 98.82	\$ 2,196.07					

HAWAII THEATRE CENTER  
ARCHITECTURAL LIGHTING RETROFIT AND EMERGENCY TRANSFER SYSTEM OVERHAUL

Under Marquee Lighting/ Other Exterior Projects

400	Trim		\$	168.00	Philips Lytecaster Recessed Trim w/Color Match	#	1	\$	67,200.00	\$	3,166.46	\$	70,366.46
0	Lamp		\$	55.86	LED MR16 Base Full Dimming Capability 3000K-2700K	#	1	\$	-	\$	-	\$	-
20	Exterior Fixtures		\$	350.00	Estarter Security / Area Lights - Reapointment	#	1	\$	7,000.00	\$	329.84	\$	7,329.84
1	Installation Components		\$	672.00	Installation Mounting, Connections, Data	#	1	\$	672.00	\$	31.66	\$	703.66
1	Lift Rental		\$	1,250.00	Lift Plus Pick Up/Return	#	2	\$	1,250.00	\$	58.90	\$	1,308.90
40	Hour C13 Hawaii Electrical Contractor		\$	110.00	Licensed , Insured	#	1	\$	-	\$	-	\$	-
40	Hour Lighting Director		\$	83.89	Install, Program, Train, Warranty Registry	#	1	\$	3,355.60	\$	158.12	\$	3,513.72

Emergency Lighting Transfer System

2	Emergency Panels Mains Fed Nema 4 Enclosure		\$	25,000.00	Mains Fed Relay Panel for Emergency Loads	#	1	\$	50,000.00	\$	2,356.00	\$	52,356.00
2	Solar Integrated Transfer Power Back Up Power		\$	66,000.00	Battery Back Up Systems with Solar Integration	#	1	\$	132,000.00	\$	6,219.84	\$	138,219.84
1	Installation Components		\$	15,000.00	Installation Mounting, Connections, Data	#	1	\$	15,000.00	\$	706.80	\$	15,706.80
20	Hour Demolition		\$	83.89		#	1	\$	2,200.00	\$	103.66	\$	2,303.66
40	Hour C13 Hawaii Electrical Contractor		\$	110.00	Licensed , Insured	#	1	\$	4,400.00	\$	207.33	\$	4,607.33
40	Hour Lighting Director		\$	83.89	Install, Program, Train, Warranty Registry	#	1	\$	3,355.60	\$	158.12	\$	3,513.72

Architectural Program Hours

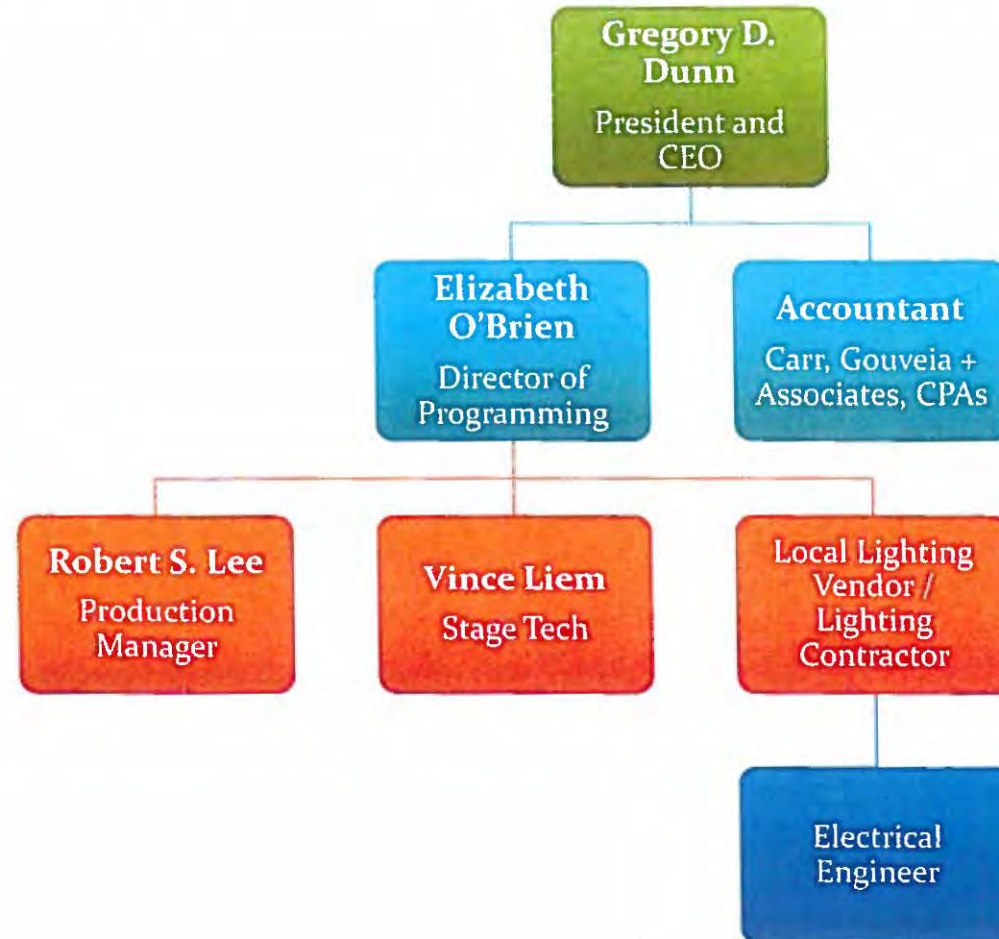
40	Lighting Consultant	Donation	\$	125.00	On Site Auditing	#	1	\$	5,000.00			\$	-
60	Lighting Consultant	Donation	\$	125.00	Deconstruct Lighting System and Create Retrofit - <del>South</del>	#	1	\$	7,500.00			\$	-
60	Lighting Consultant	Donation	\$	125.00	Create Retrofit Schedule	#	1	\$	7,500.00			\$	-
40	Lighting Consultant	Donation	\$	125.00	Create Submittals for House Reports	#	1	\$	5,000.00			\$	-

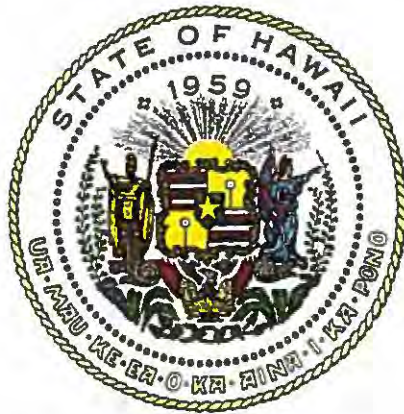
Other Project Programs

60	Applicability Testing	Donation	\$	125.00	Map Integration	#	1	\$	7,500.00			\$	-
0	Asstst Facility in Obtaining Utility Rebates		\$	125.00	Facilitate Rebates From HECO	#	1	\$	-	\$	-	\$	-
30	Market the Project	Donation	\$	125.00	Market Project with the Green, Lighting and Design Community	#	1	\$	3,750.00			\$	-
15.5	Create Quick Guides for New Technology		\$	125.00	Create House Manuals	#	1	\$	1,937.50	\$	91.30	\$	2,028.80
10	Warranty Registration	Donation	\$	125.00	Warranty Registry	#	1	\$	1,250.00			\$	-
150	Hour C13 Hawaii Electrical Contractor		\$	110.00	Licensed , Insured	#	1	\$	16,500.00	\$	777.48	\$	17,277.48
1	Lot Data Control Cable	Donation	\$	750.00	System Distribution	#	1	\$	750.00			\$	-
1	Networking Components		\$	5,000.00	System Network Wire and Wireless Components	#	1	\$	5,000.00	\$	235.60	\$	5,235.60
1	Networking Components	Donation	\$	10,000.00	System Network Wire and Wireless Components	#	1	\$	10,000.00			\$	-
1	Shipping		\$		Shipping of Materials	#		\$	15,000.00	\$	706.80	\$	15,706.80
												<b>TOTAL</b>	<b>\$648,060.82</b>



# Hawaii Theatre Center Lighting Project Organization Chart





Department of Commerce and Consumer Affairs

CERTIFICATE OF GOOD STANDING

I, the undersigned Director of Commerce and Consumer Affairs of the State of Hawaii, do hereby certify that

HAWAII THEATRE CENTER

was incorporated under the laws of Hawaii on 04/27/1984 ; that it is an existing nonprofit corporation; and that, as far as the records of this Department reveal, has complied with all of the provisions of the Hawaii Nonprofit Corporations Act, regulating domestic nonprofit corporations.



IN WITNESS WHEREOF, I have hereunto set my hand and affixed the seal of the Department of Commerce and Consumer Affairs, at Honolulu, Hawaii.

Dated: January 19, 2018

Director of Commerce and Consumer Affairs