

House District(s) 8, 9, 10, 11

Senate District(s) 5, 6

THE TWENTY-NINTH LEGISLATURE
APPLICATION FOR GRANTS
CHAPTER 42F, HAWAII REVISED STATUTES

Log No:

For Legislature's Use Only

Type of Grant Request:

GRANT REQUEST – OPERATING

GRANT REQUEST – CAPITAL

"Grant" means an award of state funds by the legislature, by an appropriation to a specified recipient, to support the activities of the recipient and permit the community to benefit from those activities.

"Recipient" means any organization or person receiving a grant.

STATE DEPARTMENT OR AGENCY RELATED TO THIS REQUEST (LEAVE BLANK IF UNKNOWN): _____

STATE PROGRAM I.D. NO. (LEAVE BLANK IF UNKNOWN): _____

1. APPLICANT INFORMATION:

Legal Name of Requesting Organization or Individual:
Grow Some Good

Street Address:
454 Halalai St. Kihei, HI 96753

Mailing Address:
1215 S. Kihei Rd. Suite O #1047,
Kihei, HI 96753

2. CONTACT PERSON FOR MATTERS INVOLVING THIS APPLICATION:

Name KATHY BECKLIN

Title Executive Director

Phone # 808-344-0469

Fax # 866-286-3631

E-mail Kathy@GrowSomeGood.org

3. TYPE OF BUSINESS ENTITY:

- NON PROFIT CORPORATION INCORPORATED IN HAWAII
- FOR PROFIT CORPORATION INCORPORATED IN HAWAII
- LIMITED LIABILITY COMPANY
- SOLE PROPRIETORSHIP/INDIVIDUAL
- OTHER

6. DESCRIPTIVE TITLE OF APPLICANT'S REQUEST:

The Garden to Farm Program will take school gardens to the next level, by maximizing school garden classroom effectiveness and learning opportunities, while ensuring garden health and productivity. Ultimately this will result in more crops produced for students to observe and learn about, introducing them to new foods to taste and learn how to prepare, and possibly allowing for additional produce distribution within the school community.

4. FEDERAL TAX ID #: [REDACTED]

5. STATE TAX ID #: [REDACTED]

7. AMOUNT OF STATE FUNDS REQUESTED:

FISCAL YEAR 2019: \$77,233

8. STATUS OF SERVICE DESCRIBED IN THIS REQUEST:

- NEW SERVICE (PRESENTLY DOES NOT EXIST)
- EXISTING SERVICE (PRESENTLY IN OPERATION)

SPECIFY THE AMOUNT BY SOURCES OF FUNDS AVAILABLE AT THE TIME OF THIS REQUEST:

STATE \$ 0

FEDERAL \$ 0

COUNTY \$ 0

PRIVATE/OTHER \$ 0

TYPE NAME & TITLE OF AUTHORIZED REPRESENTATIVE:

[REDACTED]

KATHY BECKLIN, EXECUTIVE DIRECTOR

1/16/18

JAN 18 2018

JKB
11:00AM

Application for Grants

Please check the box when item/section has been completed. If any item is not applicable to the request, the applicant should enter "not applicable".

I. Background and Summary

A brief description of the applicant's background;

Since 2008, Grow Some Good has worked diligently to fulfil its mission to support local agriculture and provide access to nutritious, affordable food. The primary strategy used to meet this goal has been to provide school gardens and garden classes for students of all ages. Grow Some Good has installed gardens and provided maintenance and upkeep of these gardens at schools in South Maui, Central Maui, and West Maui. In addition, our school garden program provides an active learning curriculum in alignment with required school curriculum and learning standards. School garden classes are scheduled into the school week with the regular class schedule. Our garden coordinators provide instruction in how to grow food plants, and related topics such as ecology, biology, science, culture and math. In addition to creating valuable outdoor classrooms, the school garden programs help beautify the campus, improve students' and faculty members' pride in their school, and create opportunities for volunteer and community engagement.

Over the past nine years, we estimate that Grow Some Good has provided at least 146,000 hours of school garden classes, bearing the majority of costs related to the program. While some schools contribute through PTA donations, small grants, or staff support, Grow Some Good has provided approximately 84% of the costs, paying for school garden supplies, staff time, classroom materials, and administrative expenses.

Grow Some Good is poised for growth in program development and garden expansion. By building on past the past work and funding provided by previous Grant in Aid awards, we are in a position to strive for optimal growth that will improve services for students, schools, and the greater community.

Through a previous Grant in Aid award, we are executing our Growing Sustainability Project. This project aims at helping schools become more self-sufficient in how they support their school gardens. Several important factors are coming to light through project execution. While schools highly value their school gardens, they are often unable to support them through fundraising events or activities. However, we have had some success in asking them to provide a part-time teacher to support the garden class activities. In these cases, Grow Some Good supports this effort by screening, interviewing, and referring candidates, and upon hire by the Department of Education, providing training, and all resources needed to support the garden and the garden lessons.

In 2017 Grow Some Good received a Grant in Aid award that is supporting our Grow It/Know It program, focused on improving children's health through improved nutrition and access to

healthier foods and simple recipes for healthy, affordable dishes that students can make at home. This program is in the planning stages, and will be implemented in the spring of 2018, in time to conclude by the funding's end December 31, 2018.

We are grateful for the support of past Grant in Aid awards that helped Grow Some Good sustain the structure of the organization, putting important positions and programs in place, and ultimately providing school gardens in 11 schools, with approximately 4,500 students participating each year. We now look forward to maximizing the impact of these award through this current request in support of our **Garden to Farm Program**.

Goals and objectives related to the request;

In the **Garden to Farm Program**, Grow Some Good has the exciting opportunity to improve our current school garden classroom offerings, while planning for growth in crop production, by meeting the following goals and objectives:

1) Goal: Maximize school garden classroom effectiveness and learning opportunities while ensuring garden health and productivity.

- Objective: Farm Manager provides garden management, with a focus on growing crops.
- Objective: Garden Coordinators focus on managing garden-related classroom activities.
- Objective: Integrated pest management systems and invasive species prevention methods are used to improve garden health, production and support the natural environment of our schools and across Maui.
- Objective: Farm Management as a viable career is demonstrated as an option for students
- Objective: Garden classes are enhanced to focus on required curriculum
- Objective: Engaging curriculum and garden activities improves school attendance.
- Objective: More produce is available for consumption by students.

2) Goal: School Gardens remain viable year-round.

- Objective: Reduced loss of production time and classroom time due to unsupported school break time periods.
- Objective: A volunteer supported maintenance plan and schedule are in place for each garden, supported by the Farm Manager.

3) Goal: A School Garden to School Farm Management protocol is created to be made available for other schools in Hawaii.

- Objective: Additional schools are able to transition from "school garden" to "school farm" programs.
- Objective: Growth in the effectiveness of school gardens and Farm to School activities across the state of Hawaii.

4) Long Term Goal: School gardens at specific schools evolve to become farms and/or food forests; with produce used for classroom activities and other distribution.

- Objective: Gardens produce crops to be used for classroom activities.
- Objective: Gardens produce crops to be used for school fundraisers.

Objective: Gardens produce enough food for donations to local foodbanks and food distribution programs such as “Backpack Buddies.”

Objective: Available produce may eventually be used in school cafeterias, in alignment with statewide efforts around Farm to School procurement and distribution.

☒ The public purpose and need to be served:

Our efforts toward supporting school garden programs have a huge benefit to our island community. Through school gardens, students are introduced to new fruits, vegetables and herbs they may not have access to at home. In our garden lessons we share nutritional information about the produce, define a healthy diet, teach students how to read and understand food nutrition labels, and demonstrate healthy, simple recipes they can make at home.

Healthy eating habits contribute to overall good health, obesity reduction and chronic disease prevention. This is especially critical for our youth today. According to the State of Obesity report, in 2016, 26% of youth ages 10-17 were considered overweight or obese in Hawaii. (<https://stateofobesity.org/children1017>) Obese children often develop into obese adults. In the United States, obesity is one of the biggest causes of preventable disease. With an increase in weight, individuals also experience increases in medical costs and lost days at work. (<https://stateofobesity.org/healthcare-costs-obesity/>)

Adding to the concern about children’s health is the rate of food insecure families in Hawaii. In the 2014 Overall Food Insecurity in the United States report by Feeding America, 13.7% of Hawaii residents are considered food insecure, meaning they may not always have access to enough food and nutrients to maintain a healthy, active life. In addition, with the higher cost of living in our state, the average meal cost is \$3.10, compared to the national average of \$2.82. This creates additional challenges around providing healthy meals for children and families.

The rate of students participating in free or reduced lunch programs can also be an indicator of food insecurity. In Maui County 49% of children received free or subsidized lunches, as reported for the 2016-17 school year. (Source: Hawai‘i State Department of Education, Systems Accountability Office, *Trend report: Educational and fiscal accountability*, various years.)

By better supporting our school gardens, increasing the health and production in our gardens, and eventually creating farms and/or food forests, we hope to increase the amount of produce available to students. In this way they are more often able to try produce from the garden, learn healthy recipes, and, when possible, take produce home to share with their families. Over time, more students see the value of agriculture and may build careers that benefit our island community.

☒ The Target Population to be Served and Geographic Coverage

The target population served by this program is students in elementary and intermediate schools in Central Maui, South Maui, and West Maui. These schools include: Kihei Elementary School, Lokelani Intermediate School, Kamali‘i Elementary School, Wailuku Elementary School,

Kahului Elementary School, Waihe'e Elementary School, Princess Nāhi'ena'ena Elementary School, Lahaina Intermediate School, Maui Preparatory Academy, Pomaikai Elementary School and Pu'u Kukui Elementary School.

We currently serve 4,500 students in 11 schools each year. Students in our partner schools come from a diverse set of cultural and economic backgrounds. The gardens also serve educators and interested community members. Students across the state will benefit from program information distributed to additional Hawaii schools.

II. Service Summary and Outcomes

Describe the scope of work, tasks and responsibilities;

The **Garden to Farm Program** is designed to take our educational school garden programs to the next level. While we currently have very successful and impactful programs, there is a conflict in two critical areas of the school garden programs by nature of their design, and resources available. While we focus on creating and implementing innovative, engaging, and educational lessons for students, often, due to constraints on staff time and budgets, we do not have the opportunity to focus on growing more crops in the garden. With an increase in production, students will be able to learn and observe growth of more crops, taste more produce, use produce in garden cooking lessons, and possibly take produce home to their families, as available. Ultimately, as is the goal for many Farm to School organizations in Hawaii, the produce may be made available for use in the school cafeterias.

We continue to provide school garden programs that reach all grade levels, with a focus on education, and providing crop diversity for students' instruction. We also look to the future opportunity to create farms and/or food forests on campus. With the **Garden to Farm Program**, the focus is on producing more crops, ensuring GAP (Good Agricultural Practices) certification, introducing career options in agriculture, and will likely focus on students in grades four and up. Several schools on Maui have adequate space and are appropriate for this concept, including Lokelani Intermediate School, Lahaina Intermediate, and Pomaikai Elementary School.

Because teaching classes and garden development and supervision cannot all be accomplished in our current staffing structure, through the **Garden to School Program**, we have more support through our Farm Manager to define systems and provide the resources necessary to have healthy, productive gardens year-round.

Scope of Work:

The first phase of the **Garden to Farm Program** is to conduct an assessment of current garden productivity, needs, and potential for future growth. The Program Manager, Farm Manager, and Garden Coordinators establish goals and objectives for each garden. The Farm Manager will assess training needs for garden coordinators on relative lessons in farm management, such as pest management, invasive species prevention, and garden maintenance. The Volunteer

Coordinator works with the team at each garden to determine volunteers needed to ensure year-round care for the garden.

In the second phase, the Farm Manager will work with the Garden Coordinator to support the school gardens as needed to meet stated goals and objectives for each garden. Some of the tasks for this phase include:

- Assessing overall garden layout and design, and prioritizing recommendations for improvements.
- Assessing irrigation needs and making repairs and improvements.
- Assessing soil needs and making recommendations and adjustments.
- Providing bulk materials such as soil amendments, mulch and plants.
- Assessing tools required and provide or repair tools.
- Managing contract labor work, such as ground leveling, and installation of shade structures.
- Providing training for garden coordinators in the areas of invasive species management, pest control, food safety, and irrigation installation and repair.

The Volunteer Coordinator will recruit volunteer teams to assist with garden care at each school over school breaks. He/she will create a master plan for garden care coverage for the organization.

With improved healthy, stability, and overall management of the gardens, the program will enter the third phase, with the Farm Manager establishing plans to develop farms and/or food forests at specific schools. A program summary, along with recommendations, will be made available to other school garden programs across the state of Hawaii.

Annual Timeline:

Jan – Feb 2019

Farm Manager and Program Manager Conduct Garden Evaluations

Farm Manager consults with Garden Coordinators and plans for 2019 activities for each school, with the goal to ensure that each garden has:

- 1) Adequate irrigation
- 2) Appropriate soil nutrients/amendments
- 3) Invasive species controls in place
- 4) Safe pest controls in use
- 5) Adequate planting structures and space
- 6) A safe and productive garden classroom
- 7) Systems in place to provide year-round support for gardens during school breaks.

Volunteer Coordinator works with Garden Coordinators to determine volunteers needed to ensure year-round care for the garden.

March – May 2019

Garden Coordinator Training

Ongoing Farm Support Activities – Farm Manager works with Garden Coordinators to plan needed projects and activities at each school.

Volunteer Coordinator makes volunteer assignments and overall garden coverage plan for the organization.

June – July 2019

Program evaluation occurs and adjustments are made.

August – September 2019

Farm Manager conducts consultation and planning with Garden Coordinators in preparation for fall classes.

Garden Coordinator Training

Sept – December 2019

Ongoing farm support activities.

Evaluation and planning for farms and/or food forests at select schools.

Year-end evaluation.

Summary report prepared.

Quality assurance and evaluation plans:

This program will be monitored by the Program Manager, working closely with the Farm Manager. Through initial garden evaluations, we will have specific goals for improvements and/or maintenance for each garden. These will be carried out by the Farm Manager, with support of the Garden Coordinator at each school. During the June-July evaluation period, the Program Manager will assess whether these activities have occurred and their effectiveness. Adjustments can be made as needed at this time, in order to complete the work by the end of 2019.

Measures of effectiveness:

- 1) Each garden has adequate irrigation.
- 2) Each garden has appropriate soil nutrients/amendments.
- 3) Invasive species controls are put in place to reduce invasion.
- 4) We observe less crop loss due to pests.
- 5) Each garden has adequate planting structures and space.
- 6) Each garden is a safe and productive garden classroom.
- 7) There are established systems in place to provide year-round support for gardens during school breaks.

III. Financial

Budget

1. The applicant shall submit a budget utilizing the enclosed budget forms as applicable, to detail the cost of the request.

- a. Budget request by source of funds - Attached
- b. Personnel salaries and wages - Attached
- c. Equipment and motor vehicles – Not Applicable
- d. Capital project details – Not Applicable
- e. Government contracts, grants, and grants in aid - Attached

2. The applicant shall provide its anticipated quarterly funding requests for the fiscal year 2019.

Quarter 1	Quarter 2	Quarter 3	Quarter 4	Total Grant
\$19,308	\$19,308	\$19,308	\$19,309	\$77,233

3. The applicant shall provide a listing of all other sources of funding that they are seeking for fiscal year 2019.

- Private Local Foundations
- Private Corporate Foundations
- Annual Fundraising Event “Taste of School Gardens”
- Individual Donors

4. The applicant shall provide a listing of all state and federal tax credits it has been granted within the prior three years. Additionally, the applicant shall provide a listing of all state and federal tax credits they have applied for or anticipate applying for pertaining to any capital project, if applicable.

Not Applicable

5. The applicant shall provide a listing of all federal, state, and county government contracts, grants, and grants in aid it has been granted within the prior three years and will be receiving for fiscal year 2019 for program funding.

- Grant in Aid 2016-17 \$65,814
- Grant in Aid 2017-18 \$50,714

6. The applicant shall provide the balance of its unrestricted current assets as of December 31, 2017.

\$26,581

IV. Experience and Capability

☒ Necessary Skills and Experience

Volunteers and Community Partners:

Our school garden programs have been successful for the past nine years due to the hard work, dedication, and expertise of our staff and volunteers. Grow Some Good is served by a dedicated and active Board of Directors who manage the organization.

The President of the Board, Rosa McAllister, has extensive experience in non-profit management, fundraising, and program development. She is co-founder and Organizational Advisor of Networks for Training and Development. Lehn Huff, Vice President of the board, started and headed the new Middle School at Seabury Hall until her retirement in 2008; she currently serves as the Director for Maui School Garden Network. Board Secretary Judy Locke is a retired teacher and was named Maui District Teacher of the Year in 2007. Co-founder and Treasurer Kathy Becklin has many years of experience as a project manager in the defense and high tech sector, and is a graduate of the Master Gardener certificate program with the University of Hawai'i College of Agriculture and Human Resources. She currently serves as the organization's Executive Director. In addition to extensive knowledge and experience in school gardens, all board members have demonstrated fundraising and management experience.

Our school garden programs are supported by five garden coordinators. Collectively this group has a wide range of education and experience in agriculture, horticulture, education and nutrition, with degrees in Sociology, Education, Sustainable Agriculture and Environmental Studies. They are our most qualified educators to date, and we are glad to be able to provide an opportunity to support careers in the fields of agriculture, sustainability and education.

Grow Some Good also has an extensive network of community partners with which it shares resources in the areas of agriculture, science, food education, and nutrition. This program draws on a network of Maui's leading chefs, nutritionists, educators, Maui Culinary Academy, the YMCA, Maui School Garden Network, and individual school administrations and PTA groups.

☒ Facilities:

Our school garden programs take place on-site at participating schools. The space and facilities available vary by school. For each garden, we have a tool shed for secure storage; either a temporary or permanent shade cover area for working on projects, giving instruction, and in some cases, sprouting seedlings; work tables for the students to plant seeds and do other projects; and the garden space itself, which is made up of both raised beds and in-ground planting areas.

Common workstations in the garden include: planting areas, compost bins, container gardens, worm bins, and a nursery area. Typical supplies and equipment include irrigation systems, measurement tools, wheelbarrows, shovels, rakes, rototillers, weed whackers, shredders, produce scales and kitchen prep kits.

V. Personnel: Project Organization and Staffing

Proposed Staffing, Staff Qualifications, Supervision and Training

Grow Some Good currently has two Garden Coordinators assisting with some Farm Manager duties. To fulfill the requirements of the **Garden to Farm Program**, we would make this a full-time position for one person.

The Farm Manager is supervised by the Program Manager. Together they determine the best ways to fulfill the needs of each garden to increase vitality and productivity. They consult with the Garden Coordinator at each school, determine what is needed at that garden, and make a plan to meet those needs. The Farm Manager is responsible for completing these activities.

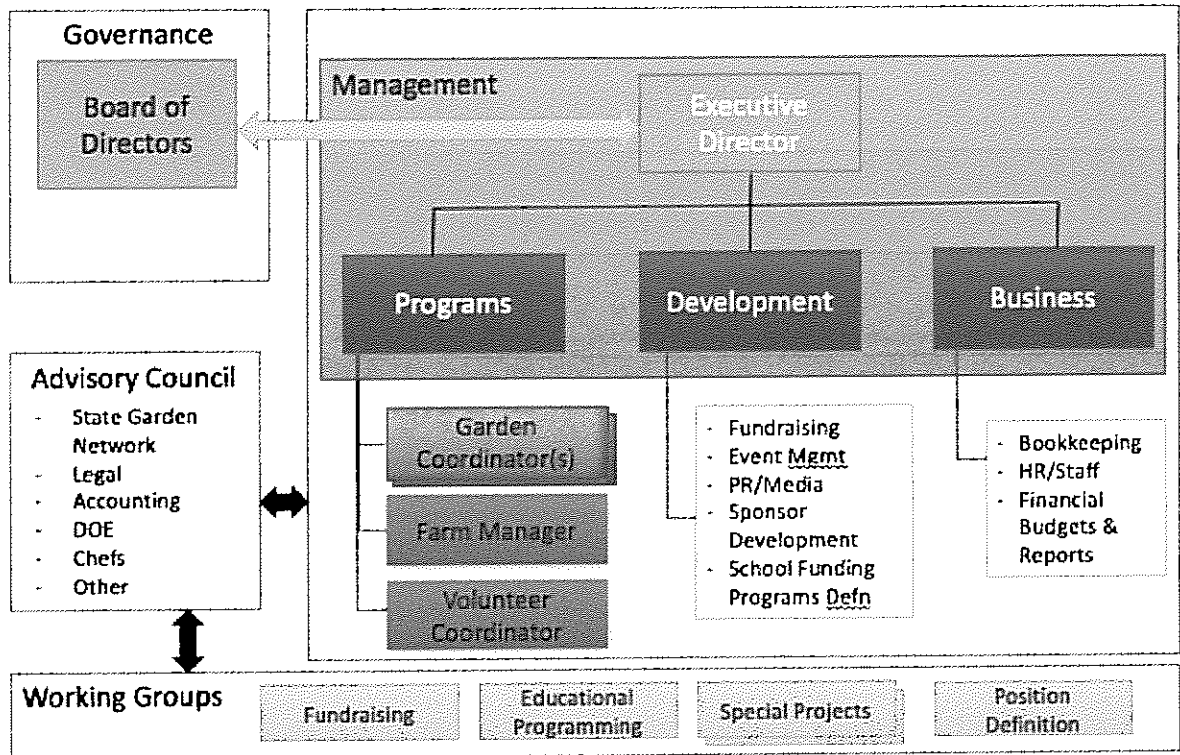
The Program Manager sets overall goals for the organization as related to program goals, activities and outcomes. In the **Garden to Farm Program**, they evaluate each garden for each school, and determine how the Farm Manager can best support it to achieve the goals for that garden.

Garden Coordinators teach garden classes in the schools. They are the primary contact for coordination of all garden activities at each school. They currently are responsible for all garden support and maintenance. In the **Garden to Farm Program** they will have the support of a Farm Manager to ensure their garden's growth and productivity. Garden Coordinators will continue to support the gardens as needed, but will have more time available to focus on lessons, student development, volunteers, and their school community. Garden Coordinators are supervised by the Executive Director.

The Volunteer Coordinator will support the program by assessing volunteer support needed for each garden, coordinating volunteers' efforts, and creating a volunteer schedule to provide year-round support for gardens during school breaks. The Volunteer Coordinator is supervised by the Executive Director.

Organization Chart

Grow Some Good – Organization Chart



Compensation

The three highest paid employees of the organization, by position, in 2017:

Development Director, Malia Bohlin 2017 = \$42,976

Program Manager Keith Kindla January – August 2017 = \$15,959

Garden Coordinator and Curriculum Advisor, Nadine Rasmussen 2017 = \$15,361

VI. Other

Litigation

The applicant shall disclose any pending litigation to which they are a party, including the disclosure of any outstanding judgement. If applicable, please explain.

Not Applicable

Licensure or Accreditation

The applicant shall specify any special qualifications, including but not limited to licensure or accreditation that the applicant possesses relevant to this request.

Not Applicable

Private Educational Institutions

The applicant shall specify whether the grant will be used to support or benefit a sectarian or non-sectarian private educational institution. Please see Article X, Section 1, of the State Constitution for the relevance of this question.

Not Applicable

Future Sustainability Plan

The activities of the Garden to School Program will be supported by additional funding sources in the years beyond 2018-19. Grow Some Good actively fundraises in the areas of corporate giving, foundation grants, special events, and individual donor support. We anticipate that a portion of the costs for the **Garden to Farm Program** will be able to be absorbed into the current budget once the program is established. If not enough additional funds are available, the program will be scaled back accordingly.

Certificate of Good Standing (If the Applicant is an Organization)

See attachment.

Declaration Statement

See attachment.

Public Purpose

If awarded this grant, funds will be used for a public purpose pursuant to Section 42F-102, Hawaii Revised Statutes.

BUDGET REQUEST BY SOURCE OF FUNDS

Period: July 1, 2018 to June 30, 2019

Applicant: Grow Some Good

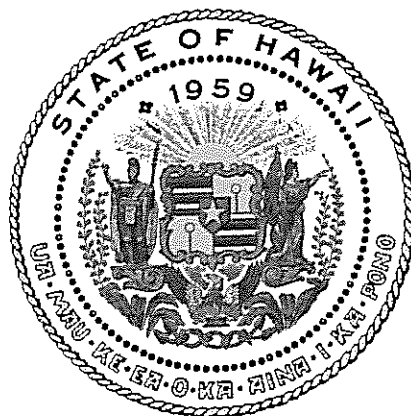
BUDGET CATEGORIES	Total State Funds Requested (a)	Total Federal Funds Requested (b)	Total County Funds Requested (c)	Total Private/Other Funds Requested (d)
A. PERSONNEL COST				
1. Salaries	54,270			
2. Payroll Taxes & Assessments	7,408			
3. Fringe Benefits	7,055			
TOTAL PERSONNEL COST	68,733			
B. OTHER CURRENT EXPENSES				
1. Airfare, Inter-Island				
2. Insurance				
3. Lease/Rental of Equipment				
4. Lease/Rental of Space				
5. Staff Training				
6. Supplies	3,500			20,000
7. Telecommunication				
8. Utilities				
9. Contract Labor	5,000			
10.				
11.				
12.				
13.				
14.				
15.				
16.				
17.				
18.				
19.				
20.				
TOTAL OTHER CURRENT EXPENSES	8,500			20,000
C. EQUIPMENT PURCHASES				
D. MOTOR VEHICLE PURCHASES				
E. CAPITAL				
TOTAL (A+B+C+D+E)	77,233			20,000
SOURCES OF FUNDING		Budget Prepared By:		
(a) Total State Funds Requested	77,233	Kathy Becklin 808-344-0469		
(b) Total Federal Funds Requested		Name (Please type or print) Phone		
(c) Total County Funds Requested		1/15/2018		
(d) Total Private/Other Funds Requested	20,000	Signature of Authorized Official Date		
TOTAL BUDGET	97,233	Kathy Becklin, Executive Director		
		Name and Title (Please type or print)		

GOVERNMENT CONTRACTS, GRANTS, AND / OR GRANTS IN AID

Applicant: Grow Some Good

Contracts Total: 116,528

	CONTRACT DESCRIPTION	EFFECTIVE DATES	AGENCY	GOVERNMENT ENTITY (U.S. / State / Haw / Hon / Kau / Mau)	CONTRACT VALUE
1	Grant in Aid 2016-17	7/1/16 - 5/31/18	Dept. of Agriculture	State	65,814
2	Grant in Aid 2017-18	7/1/17 - 12/31/18	Dept. of Agriculture	State	50,714
3					
4					
5					
6					
7					
8					
9					
10					
11					
12					
13					
14					
15					
16					
17					
18					
19					
20					
21					
22					
23					
24					
25					
26					
27					
28					
29					
30					



Department of Commerce and Consumer Affairs

CERTIFICATE OF GOOD STANDING

I, the undersigned Director of Commerce and Consumer Affairs of the State of Hawaii, do hereby certify that

GROW SOME GOOD

was incorporated under the laws of Hawaii on 11/18/2015 ; that it is an existing nonprofit corporation; and that, as far as the records of this Department reveal, has complied with all of the provisions of the Hawaii Nonprofit Corporations Act, regulating domestic nonprofit corporations.

IN WITNESS WHEREOF, I have hereunto set my hand and affixed the seal of the Department of Commerce and Consumer Affairs, at Honolulu, Hawaii.

Dated: January 05, 2018

Director of Commerce and Consumer Affairs



**DECLARATION STATEMENT OF
APPLICANTS FOR GRANTS PURSUANT TO
CHAPTER 42F, HAWAII REVISED STATUTES**

The undersigned authorized representative of the applicant certifies the following:

- 1) The applicant meets and will comply with all of the following standards for the award of grants pursuant to Section 42F-103, Hawaii Revised Statutes:
 - a) Is licensed or accredited, in accordance with federal, state, or county statutes, rules, or ordinances, to conduct the activities or provide the services for which a grant is awarded;
 - b) Complies with all applicable federal and state laws prohibiting discrimination against any person on the basis of race, color, national origin, religion, creed, sex, age, sexual orientation, or disability;
 - c) Agrees not to use state funds for entertainment or lobbying activities; and
 - d) Allows the state agency to which funds for the grant were appropriated for expenditure, legislative committees and their staff, and the auditor full access to their records, reports, files, and other related documents and information for purposes of monitoring, measuring the effectiveness, and ensuring the proper expenditure of the grant.
- 2) If the applicant is an organization, the applicant meets the following requirements pursuant to Section 42F-103, Hawaii Revised Statutes:
 - a) Is incorporated under the laws of the State; and
 - b) Has bylaws or policies that describe the manner in which the activities or services for which a grant is awarded shall be conducted or provided.
- 3) If the applicant is a non-profit organization, it meets the following requirements pursuant to Section 42F-103, Hawaii Revised Statutes:
 - a) Is determined and designated to be a non-profit organization by the Internal Revenue Service; and
 - b) Has a governing board whose members have no material conflict of interest and serve without compensation.

Pursuant to Section 42F-103, Hawaii Revised Statutes, for grants used for the acquisition of land, when the organization discontinues the activities or services on the land acquired for which the grant was awarded and disposes of the land in fee simple or by lease, the organization shall negotiate with the expending agency for a lump sum or installment repayment to the State of the amount of the grant used for the acquisition of the land.

Further, the undersigned authorized representative certifies that this statement is true and correct to the best of the applicant's knowledge.

Grow Some Good

 (Signature)

1-5-2018
(Date)

Kathy L Becklin

Executive Director