

SB

1374

WRITTEN ONLY

TESTIMONY BY WESLEY K. MACHIDA
DIRECTOR, DEPARTMENT OF BUDGET AND FINANCE
STATE OF HAWAII
TO THE SENATE COMMITTEES ON WATER AND LAND; PUBLIC SAFETY,
INTERGOVERNMENTAL AND MILITARY AFFAIRS; AND AGRICULTURE
ON
SENATE BILL NO. 1374

February 13, 2015

RELATING TO LAND EXCHANGE

Senate Bill No. 1374 appropriates \$500,000 in special funds in FY 16 and FY 17 to investigate the possibility of exchanging State land for land owned by Dole Food Company, Inc., and for costs of executing the exchange. The funds are to be expended by the Department of Budget and Finance (B&F), in coordination with the Department of Accounting and General Services and the Department of Land and Natural Resources (DLNR). The bill also makes an unspecified special fund appropriation in FY 16 and FY 17 to investigate the possibility of exchanging certain State lands between the Department of Public Safety and Department of Agriculture.

The B&F recommends that DLNR should be the expending agency for this measure because DLNR has the expertise in this area.

From: mailinglist@capitol.hawaii.gov
To: [WTLTestimony](#)
Cc: ken.h.kakesako@hawaii.gov
Subject: Submitted testimony for SB1374 on Feb 13, 2015 15:00PM
Date: Thursday, February 12, 2015 11:52:19 AM
Attachments: [SB 1374 AGR 2-13-15 WTL-PSM-AGL.pdf](#)

SB1374

Submitted on: 2/12/2015

Testimony for WTL/PSM/AGL on Feb 13, 2015 15:00PM in Conference Room 224

Submitted By	Organization	Testifier Position	Present at Hearing
Ken Kakesako	State Department of Agriculture	Support	Yes

Comments:

Please note that testimony submitted less than 24 hours prior to the hearing, improperly identified, or directed to the incorrect office, may not be posted online or distributed to the committee prior to the convening of the public hearing.

Do not reply to this email. This inbox is not monitored. For assistance please email webmaster@capitol.hawaii.gov

DAVID Y. IGE
Governor

SHAN S. TSUTSUI
Lt. Governor



State of Hawaii
DEPARTMENT OF AGRICULTURE
1428 South King Street
Honolulu, Hawaii 96814-2512
Phone: (808) 973-9600 FAX: (808) 973-9613

SCOTT E. ENRIGHT
Chairperson, Board of Agriculture

PHYLLIS SHIMABUKURO-GEISER
Deputy to the Chairperson

**TESTIMONY OF SCOTT E. ENRIGHT
CHAIRPERSON, BOARD OF AGRICULTURE**

**BEFORE THE SENATE COMMITTEES ON WATER AND LAND, PUBLIC SAFETY,
INTERGOVERNMENTAL AND MILITARY AFFAIRS, AND AGRICULTURE**

February 13, 2015
3:00 P.M.
CONFERENCE ROOM 224

**SENATE BILL NO. 1374
RELATING TO LAND EXCHANGE**

Chairpersons Thielen, Espero, and Ruderman and Members of the Committees:

Thank you for the opportunity to comment on Senate Bill No. 1374. Part I of the bill is to appropriate \$500,000 from the Land Conservation Fund (under the Department of Land and Natural Resources) to be expended by the Department of Budget and Finance, in coordination with the departments of Accounting and General Services and Land and Natural Resources, for the purpose of investigating the possibility of acquiring Dole Food Company lands on Oahu by exchange of State land. Part II of the bill is to appropriate funds from the Land Conservation Fund to investigate the possibility of a land exchange between the departments of Public Safety and Agriculture and how this exchange can be used to acquire the Dole Food Company lands for agricultural production purposes. The State lands being considered are in Halawa Valley and Kalihi.

The Department of Agriculture supports this measure that seeks to acquire certain Dole Food Company properties for the purpose of agricultural production. We would encourage consideration of those lands with a history of agricultural cultivation.



In general, having the State acquire prime agricultural lands in fee is the most effective way to ensure the availability of agricultural lands for agricultural production in perpetuity with land rents based on the agricultural productivity of the land.

Thank you for the opportunity to present our testimony on this important bill.

From: mailinglist@capitol.hawaii.gov
To: [WTLTestimony](#)
Cc: thee@dbedt.hawaii.gov
Subject: Submitted testimony for SB1374 on Feb 13, 2015 15:00PM
Date: Thursday, February 12, 2015 12:33:33 PM
Attachments: [SB1374 BED-OP 02-13-15 WTL-PSM-AGL.pdf](#)

SB1374

Submitted on: 2/12/2015

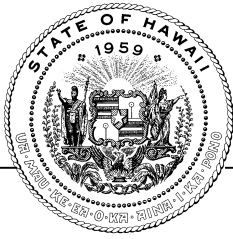
Testimony for WTL/PSM/AGL on Feb 13, 2015 15:00PM in Conference Room 224

Submitted By	Organization	Testifier Position	Present at Hearing
Teri Hee	Office of Planning	Comments Only	Yes

Comments: Please see attached Testimony file.

Please note that testimony submitted less than 24 hours prior to the hearing, improperly identified, or directed to the incorrect office, may not be posted online or distributed to the committee prior to the convening of the public hearing.

Do not reply to this email. This inbox is not monitored. For assistance please email webmaster@capitol.hawaii.gov



OFFICE OF PLANNING STATE OF HAWAII

235 South Beretania Street, 6th Floor, Honolulu, Hawaii 96813
Mailing Address: P.O. Box 2359, Honolulu, Hawaii 96804

DAVID Y. IGE
GOVERNOR

LEO R. ASUNCION
ACTING DIRECTOR
OFFICE OF PLANNING

Telephone: (808) 587-2846
Fax: (808) 587-2824
Web: <http://planning.hawaii.gov/>

Statement of
LEO R. ASUNCION
Acting Director, Office of Planning
before the
**SENATE COMMITTEE ON WATER AND LAND,
SENATE COMMITTEE ON PUBLIC SAFETY, INTERGOVERNMENTAL
AND MILITARY AFFAIRS
AND
SENATE COMMITTEE ON AGRICULTURE**

Friday, February 13, 2015
3:00 PM
State Capitol, Conference Room 224

in consideration of
SB 1374
RELATING TO LAND EXCHANGE.

Chairs Thielen, Espero, and Ruderman, Vice Chairs Galuteria, Baker, and Riviere, and Members of the Senate Committees on Water and Land, Public Safety, Intergovernmental and Military Affairs, and Agriculture.

The Office of Planning (OP) respectfully offers the following comments on SB 1374. SB 1374 would appropriate funds to study the possibility of land exchanges between: (1) the State of Hawaii and Dole Food Company, Inc. for the preservation of agricultural lands on Oahu owned by Dole Food Company; and (2) the Department of Public Safety (PSD) and the Department of Agriculture (DOA) for the potential relocation of prison facilities from Oahu Community Correctional Center (OCCC) in Honolulu to Halawa and the expansion of Halawa Medium Security facility to alleviate overcrowding in the State prison system. The bill also directs the PSD and DOA to examine how the exchange of State lands can be used in the acquisition of the Dole Food Company lands.

As seen on the attached Figure 1 map prepared by OP's GIS Program, Oahu has just over 67,000 acres of lands classified in the State Agricultural District with slopes less than 20 percent. Please note that Figure 1 does not show those lands that are otherwise encumbered and unavailable for commercial agriculture, including the James Campbell National Wildlife Refuge in Kahuku, Department of Hawaiian Home Lands' homestead lands, and lands already subdivided for small-scale agriculture or residential purposes.

As shown in the Figure 2 map, the land exchange includes approximately 19,888 acres of Dole Food Company, of which approximately 8,389 acres (42.2%) are on lands with slopes less than 20 percent (generally suitable for agricultural production). While further study would be needed, much of the area does not appear to contain productive agricultural lands. Nonetheless, preservation of these lands for long-term agricultural use could create opportunities for farmers who currently farm under short-term leases or licenses, prevent the further loss of this important agricultural resource, and provide a stable agricultural land base in support of efforts to increase local production to meet Hawaii's food and agricultural crop needs.

We note there is legislative interest in the redevelopment of the OCCC site for high density, mixed use development in proximity to the Honolulu Rail Transit Project's proposed rail station for the area. The potential Transit-Oriented Development (TOD) benefits to the State should be explored for its opportunities to address PSD plans and needs, while facilitating infill redevelopment that could revitalize urban communities, provide affordable housing, and lessen congestion and dependence on the automobile.

Thank you for the opportunity to testify on this measure.

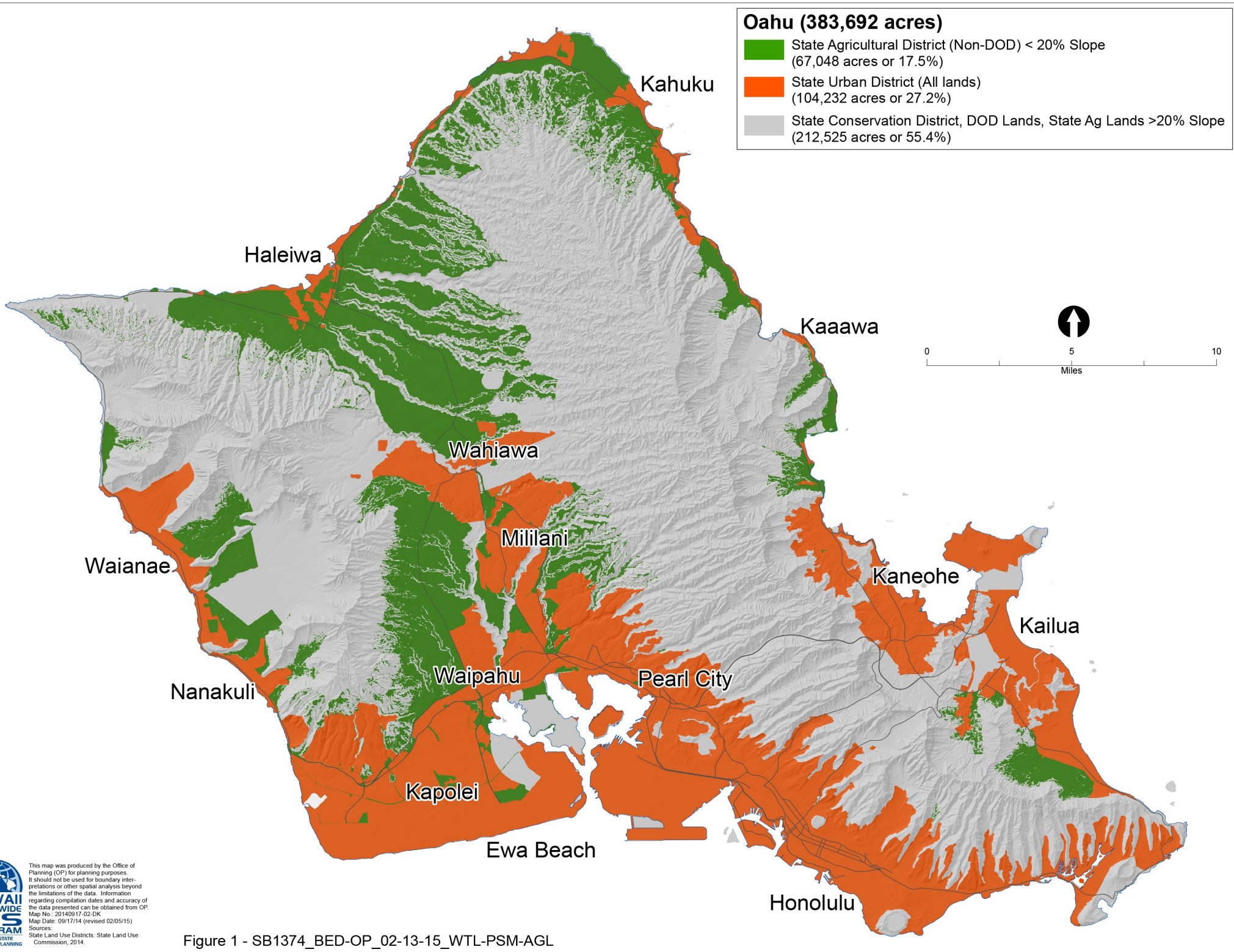


Figure 1 - SB1374_BED-OP_02-13-15_WTL-PSM-AGL



0 5 10
Miles

Oahu (383,692 acres)

- State Agricultural District (Non-DOD) < 20% Slope (67,048 acres or 17.5%)
- State Urban District (All lands) (104,232 acres or 27.2%)
- State Conservation District, DOD Lands, State Ag Lands >20% Slope (212,525 acres or 55.4%)
- Dole Food Co. TMK (102 parcels, 19,888 acres or 5.2%)

[Note: The 5.2% is 19,888 ac / 383,692 ac.]

State Agricultural District (Non-DOD, slope < 20%) = 8,339 acres or 42.2%

[Note: The 42.2% is 8,389 ac / 19,888 ac.]

State Agricultural District (Non-DOD, slope > 20%) = 11,499 acres or 57.8%

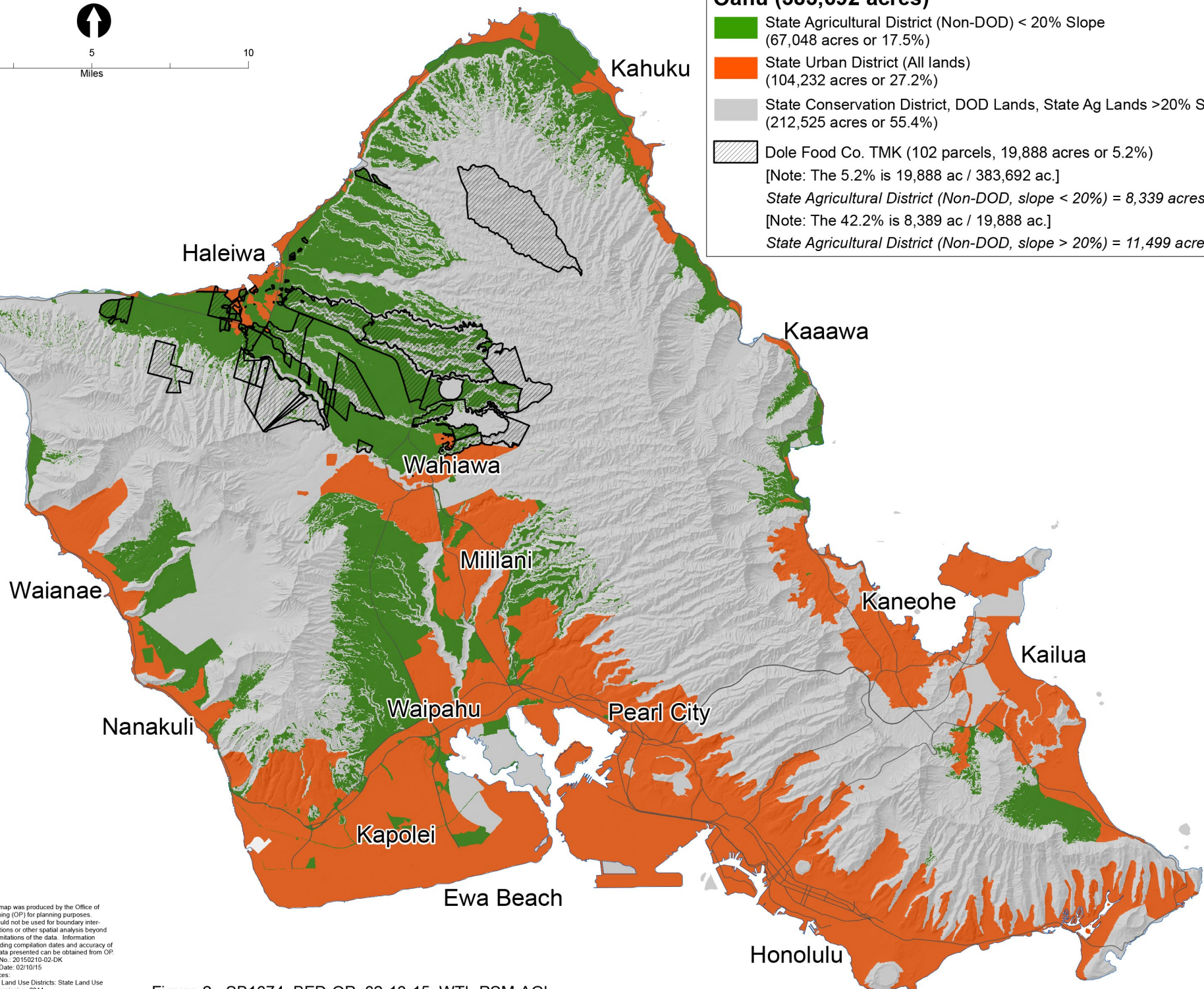


Figure 2 - SB1374_BED-OP_02-13-15_WTL-PSM-AGL

From: mailinglist@capitol.hawaii.gov
To: [WTLTestimony](#)
Cc: amel.s.chun@hawaii.gov
Subject: Submitted testimony for SB1374 on Feb 13, 2015 15:00PM
Date: Thursday, February 12, 2015 8:48:14 AM
Attachments: [SB1374_LNR_02-13-15_WTL-PSM-AGL.pdf](#)

SB1374

Submitted on: 2/12/2015

Testimony for WTL/PSM/AGL on Feb 13, 2015 15:00PM in Conference Room 224

Submitted By	Organization	Testifier Position	Present at Hearing
Carty S. Chang	DLNR	Comments Only	Yes

Comments: DLNR will comment.

Please note that testimony submitted less than 24 hours prior to the hearing, improperly identified, or directed to the incorrect office, may not be posted online or distributed to the committee prior to the convening of the public hearing.

Do not reply to this email. This inbox is not monitored. For assistance please email webmaster@capitol.hawaii.gov

DAVID Y. IGE
GOVERNOR OF HAWAII



**STATE OF HAWAII
DEPARTMENT OF LAND AND NATURAL RESOURCES**

POST OFFICE BOX 621
HONOLULU, HAWAII 96809

**Testimony of
CARTY S. CHANG
Interim Chairperson**

**Before the Senate Committees on
WATER AND LAND
and
PUBLIC SAFETY, INTERGOVERNMENTAL AND MILITARY AFFAIRS
and
AGRICULTURE**

**Friday, February 13, 2015
3:00 PM
State Capitol, Room 224**

**In consideration of
SENATE BILL 1374
RELATING TO LAND EXCHANGE**

Senate Bill 1374 proposes to use the Land Conservation Fund to investigate the possibility of exchanging state land for land owned by Dole Food Company, Inc. and for the costs of executing an exchange. The measure also proposes to use the Land Conservation Fund to investigate the possibility of exchanging certain state lands between the Department of Public Safety and the Department of Agriculture. This measure does not contemplate the acquisition or exchange going through the open and competitive process of the Land Conservation program.¹ **The Department of Land and Natural Resources (Department) offers the following comments.**

PART I of the bill proposes to require the Department, in conjunction with the Department of Budget and Finance and the Department of Accounting and General Services, to investigate the possibility of acquiring land owned by the Dole Food Company, Inc. in the central Oahu area through an exchange of state land. The measure proposes to appropriate \$500,000.00 from the Land Conservation Fund in Fiscal Years (FY) 2015-2016 and 2016-2017 for this purpose and to pay

¹ The Legacy Land Conservation Program awards grants from the Land Conservation Fund through an open and competitive process, pursuant to Chapter 173A, Hawaii Revised Statutes and Title 13, Chapter 140, Hawaii Administrative Rules. This process requires applications for funding to be reviewed by the Legacy Land Conservation Commission and approved by the Board of Land and Natural Resources at public meetings. Monies from the Fund have not previously been used for such purposes as the feasibility studies and land exchange costs contemplated by this measure.

CARTY S. CHANG
INTERIM CHAIRPERSON
BOARD OF LAND AND NATURAL RESOURCES
COMMISSION ON WATER RESOURCE MANAGEMENT

DANIEL S. QUINN
INTERIM FIRST DEPUTY

W. ROY HARDY
ACTING DEPUTY DIRECTOR - WATER

AQUATIC RESOURCES
BOATING AND OCEAN RECREATION
BUREAU OF CONVEYANCES
COMMISSION ON WATER RESOURCE MANAGEMENT
CONSERVATION AND COASTAL LANDS
CONSERVATION AND RESOURCES ENFORCEMENT
ENGINEERING
FORESTRY AND WILDLIFE
HISTORIC PRESERVATION
KAHOOLAWE ISLAND RESERVE COMMISSION
LAND
STATE PARKS

for the costs of executing the exchange if appropriate land is found. Since this measure does not identify any state parcels or even specify the type of state land to be exchanged, it would be impossible for the Department to conduct the appropriate due diligence for any such acquisition and exchange of lands. The Department does not have feasibility experts on staff and thus, imposing this task upon the Department would cause the Department to expend its limited resources and contract out such feasibility study. In addition, as Land Conservation Fund is used for acquisitions by state, county and non-profit entities for lands of resource value, the Department does not support the use of these funds in the manner stated above (i.e., a feasibility study or other due diligence cost items for a possible acquisition outside of the Legacy Land Conservation Program—see explanation in footnote 1).

PART II of the bill proposes to divert an additional \$500,000.00 from the Land Conservation Fund in both FYs 2015-2016 and 2016-2017 to investigate 1) the possibility of a transfer of certain state lands between the Department of Agriculture and the Department of Public Safety to relocate the Oahu Community Correctional Center (“OCCC”) to Halawa as well as expanding the Halawa medium security facility, and 2) how such exchange could be further utilized to acquire the agricultural lands as described in PART I of the bill. This is an inappropriate use of the Land Conservation Fund. The Department notes that the measure only provides funding for the investigation of the land exchange, but does not appropriate any general obligation bond funds for the actual construction of the new correctional facilities that would replace the existing prison.²

Finally, the Department simply notes that any land exchange would be subject to the requirements of Section 171-50, Hawaii Revised Statutes, including the approval by both the Board of Land and Natural Resources and a majority of both houses of the Legislature.

² The State would not consider conveying title away to the existing OCCC facilities without the existence of a replacement facility that satisfy the Department of Public Safety’s needs and desires.

From: mailinglist@capitol.hawaii.gov
To: [WTLTestimony](#)
Cc: publicpolicy@oha.org
Subject: Submitted testimony for SB1374 on Feb 13, 2015 15:00PM
Date: Thursday, February 12, 2015 3:40:13 PM
Attachments: [SB1374 Investigate Possible Land Exchange with Dole WTL-PSM-AGL Testimony 021315 FINAL.pdf](#)

SB1374

Submitted on: 2/12/2015

Testimony for WTL/PSM/AGL on Feb 13, 2015 15:00PM in Conference Room 224

Submitted By	Organization	Testifier Position	Present at Hearing
Office of Hawaiian Affairs	Office of Hawaiian Affairs	Comments Only	No

Comments: x

Please note that testimony submitted less than 24 hours prior to the hearing, improperly identified, or directed to the incorrect office, may not be posted online or distributed to the committee prior to the convening of the public hearing.

Do not reply to this email. This inbox is not monitored. For assistance please email webmaster@capitol.hawaii.gov



SB1374

RELATING TO LAND EXCHANGE

Senate Committee on Water and Land

Senate Committee on Public Safety, Intergovernmental and Military Affairs

Senate Committee on Agriculture

February 13, 2015

3:00 p.m.

Room 224

The Office of Hawaiian Affairs (OHA) offers the following **COMMENTS** on SB1374, which appropriates funds to investigate the possibility of: (1) exchanging state land for land owned by Dole Food Company, Inc; and (2) exchanging certain state lands between the Department of Public Safety (DPS) and the Department of Agriculture (DOA).

OHA supports the underlying purpose of this measure to preserve prime agricultural and conservation lands, including agricultural productivity rating class A and B and watershed lands. OHA notes that exchanges of public lands, including the possible exchange to be investigated in Part I and Part II of SB1374, is subject to the established, agreed-upon process for such exchanges under Act 176, Session Laws of Hawai'i 2009.

Also, OHA notes that to the extent that any state lands being investigated to be exchanged with private land is classified as public land trust lands, OHA reiterates that such private land must assume public land trust land status pursuant to Section 5(b) of the Hawai'i Admission Act.

Mahalo for the opportunity to testify on this important measure.

From: mailinglist@capitol.hawaii.gov
To: [WTLTestimony](#)
Cc: dan.nellis@dole.com
Subject: Submitted testimony for SB1374 on Feb 13, 2015 15:00PM
Date: Thursday, February 12, 2015 11:34:06 AM
Attachments: [sb1374feb2015-021215.pdf](#)

SB1374

Submitted on: 2/12/2015

Testimony for WTL/PSM/AGL on Feb 13, 2015 15:00PM in Conference Room 224

Submitted By	Organization	Testifier Position	Present at Hearing
Daniel Nellis	Dole Food Co. Hawaii	Support	No

Comments: please find attached pdf testimony

Please note that testimony submitted less than 24 hours prior to the hearing, improperly identified, or directed to the incorrect office, may not be posted online or distributed to the committee prior to the convening of the public hearing.

Do not reply to this email. This inbox is not monitored. For assistance please email webmaster@capitol.hawaii.gov



Food Company Hawaii

1116 Whitmore Avenue Wahiawa, Hawaii 96786

February 11, 2015

Via Email Transmittal: TRATestimony@capitol.hawaii.gov

Senate Committees on Water and Land, Public Safety,
Intergovernmental and Military Affairs and Agriculture
Hawai'i State Capitol Room 224

Subject: S.B. 1374 Relating to Land Exchange

Dear Chair Thielen, Vice Chair Galuteria, Chair Espero, Vice Chair Baker, Chair Ruderman, Vice Chair Riviere and Members of Senate Committees on Water and Land, Public Safety, Intergovernmental and Military Affairs, and Agriculture:

I am Dan Nellis, Operations Director of Dole Food Company Hawai'i. Dole Food Company supports S.B. 1374 as one method to acquire certain excess lands owned by Dole Food Company in the Central O'ahu and North Shore regions of O'ahu. Ownership of these lands could facilitate the State's mandate to conserve and protect agricultural lands, promote diversified agriculture, increase agricultural self-sufficiency and assure the availability of agriculturally suitable lands, and to protect lands that are suitable for conservation or preservation.

Dole Food Company has a long history of agriculture in Hawai'i and our intent is to continue to support and promote diversified agriculture in Hawai'i. Our plan is to continue cultivation of existing pineapple, coffee and cacao crops and the operation of ancillary agricultural facilities.

However, Dole Food Company also has inventory of excess acreage. Various acreages are currently for sale on a parcel by parcel basis and at varying prices per parcels. We are willing to further discuss the State's interest in purchasing, or exchanging for fully entitled State lands, Dole Food Company's excess acreage to support the State's mandate of promoting diversified agriculture and preserving conservation lands and habitats.

Identification of parcels, easements, encumbrances, conditions and sale prices per parcel or by bulk sales are specific details that need to be identified in order to move forward with any binding land transaction agreement with the State. We also need to clearly understand the State's expectation and its process of acquiring private lands.

Mahalo for your consideration of my testimony. If you have any questions, please feel free to contact me.

Sincerely,

Dan Nellis, Operations Director

Dole Foods Company Hawai'i

Email: dan.nellis@dole.com

Tel: 808.621.3201

From: mailinglist@capitol.hawaii.gov
To: [WTLTestimony](#)
Cc: ken.t.nakamoto@hawaii.gov
Subject: Submitted testimony for SB1374 on Feb 13, 2015 15:00PM
Date: Thursday, February 12, 2015 9:45:13 AM
Attachments: [SB1374_ADC_2-13-15_WTL-PSM-AGL.doc](#)

SB1374

Submitted on: 2/12/2015

Testimony for WTL/PSM/AGL on Feb 13, 2015 15:00PM in Conference Room 224

Submitted By	Organization	Testifier Position	Present at Hearing
James Nakatani	Agribusiness Development Corporation	Support	No

Comments:

Please note that testimony submitted less than 24 hours prior to the hearing, improperly identified, or directed to the incorrect office, may not be posted online or distributed to the committee prior to the convening of the public hearing.

Do not reply to this email. This inbox is not monitored. For assistance please email webmaster@capitol.hawaii.gov

DAVID Y. IGE
Governor

SHAN S. TSUTSUI
Lt. Governor



JAMES J. NAKATANI
Executive Director

STATE OF HAWAII
AGRIBUSINESS DEVELOPMENT CORPORATION
235 S. Beretania Street, Room 205
Honolulu, HI 96813
Phone: (808) 586-0186 Fax: (808) 586-0189

TESTIMONY OF JAMES J. NAKATANI
EXECUTIVE DIRECTOR
AGRIBUSINESS DEVELOPMENT CORPORATION

**BEFORE THE SENATE COMMITTEES ON WATER AND LAND,
PUBLIC SAFETY, INTERGOVERNMENTAL AND MILITARY AFFAIRS
AND AGRICULTURE**

Friday, February 13, 2015
3:00 p.m.

SENATE BILL NO. 1374
RELATIING TO LAND EXCHANGE

Chairpersons Thielen, Espero, and Ruderman and Members of the joint Committees:

The Agribusiness Development Corporation ("ADC") strongly supports Senate Bill No. 1374 which appropriates funds to investigate the possibility of exchanging state land for land owned by Dole Food Company Inc., and for cost of executing the exchange.

Today, many local farmers are struggling to stay in business, or are contemplating selling their farms due to a number of challenges. One of the major barriers which inhibits farming from flourishing in Hawaii is the inability to access land due to the rising cost for agricultural land and urban sprawl development.

Dole has a large inventory of excess land that has been fallow for years and has listed over fifteen thousand acres for sale between central Oahu and the North Shore. Keeping Dole's agricultural lands in agriculture should be considered as a high priority because of the potential benefits it presents for agriculture. Since land is a critical component in enhancing the State's food security, obtaining agricultural lands through a land exchange may significantly increase the available agricultural land on Oahu for food production and may offer many possibilities to boost the economic viability of the agriculture industry as a whole.

In regards to Part 2 which appropriates funds to investigate possibility of a land exchange of certain state lands between the Department of Public Safety and the Department of Agriculture ("HDOA") and how that exchange could be further utilized in acquiring certain parcels of land by Dole Foods Company Inc., and Castle and Cooke Inc., ADC defers to HDOA as any exchange authorized by this part will be administered by the department.

Thank you for the opportunity to testify.

From: mailinglist@capitol.hawaii.gov
To: [WTLTestimony](#)
Cc: darakawa@lurf.org
Subject: Submitted testimony for SB1374 on Feb 13, 2015 15:00PM
Date: Thursday, February 12, 2015 1:49:19 PM
Attachments: [150212 SB 1374 - Land Exchange - State Land for Land Owned by Dole Food Company \(WTL-PSM-AGL\) \(wmy\).pdf](#)

SB1374

Submitted on: 2/12/2015

Testimony for WTL/PSM/AGL on Feb 13, 2015 15:00PM in Conference Room 224

Submitted By	Organization	Testifier Position	Present at Hearing
David Z. Arakawa	Land Use Research Foundation of Hawaii	Support	No

Comments:

Please note that testimony submitted less than 24 hours prior to the hearing, improperly identified, or directed to the incorrect office, may not be posted online or distributed to the committee prior to the convening of the public hearing.

Do not reply to this email. This inbox is not monitored. For assistance please email webmaster@capitol.hawaii.gov



February 12, 2015

Senator Laura H. Thielen, Chair
Senator Brickwood Galuteria, Vice Chair
Senate Committee on Water and Land

Senator Will Espero, Chair
Senator Rosalyn H. Baker, Vice Chair
Senate Committee on Public Safety, Intergovernmental and Military Affairs

Senator Russell E. Ruderman, Chair
Senator Gil Riviere, Vice Chair
Senate Committee on Agriculture

Testimony in Support of SB 1374, Exchange of Lands (Appropriates Funds to Investigate Possibility of Exchanging State Land for Land Owned by Dole Food Company, Inc., and for Costs of the Exchange.)

Friday, February 13, 2015, 3:00 p.m., in Conference Room 224

The Land Use Research Foundation of Hawaii (LURF) is a private, non-profit research and trade association whose members include major Hawaii landowners, developers and a utility company. One of LURF's missions is to advocate for reasonable, rational and equitable land use planning, legislation and regulations that encourage well-planned economic growth and development, while safeguarding Hawaii's significant natural and cultural resources and public health and safety.

LURF appreciates the opportunity to provide testimony **in support of SB 1374**, and to offer comments.

SB 1374. As an advocate for the various agricultural stakeholder groups who defend the goals of viable agricultural operations and the conservation and protection of agriculture, including important agricultural lands in Hawaii, LURF supports this measure which appropriates funds to investigate the possibility of exchanging state land for land owned by Dole Food Company, Inc., and for costs of executing the exchange. The proposal also appropriates funds to investigate the possibility of exchanging certain state lands between the department of public safety and the department of agriculture.

LURF's Position. LURF members include private property owners, farmers and ranchers who maintain and engage in agricultural enterprises, and who consider the potential for additional agricultural land and leases critical to the conduct of their operations and to help sustain their businesses. These land owners and agricultural stakeholders believe that SB 1374, by making available, agricultural land and long-term leases at affordable and predictable lease

rents, would greatly assist agricultural stakeholders and support the growth of the local agriculture industry.

This bill is consistent with the underlying intent and objectives of the IAL laws (Hawaii Revised Statutes [HRS], Sections 205-41 to 52), which were enacted to fulfill the mandate in Article XI, Section 3 of the Hawaii State Constitution, “to conserve and protect agricultural lands, promote diversified agriculture, increase agricultural self-sufficiency and assure the availability of agriculturally suitable lands.” As noted in HRS Section 205-41, the intent of Act 183 (2005) was to develop agricultural incentive programs to promote agricultural viability, sustained growth of the agricultural industry, and the long-term use and protection of important agricultural lands for agricultural use.

Passage of the long-awaited IAL legislation would be pointless without implementation of these efforts which involve the collaboration and support of agricultural and business organizations, as well as government agencies, which this bill is intended to cultivate and promote.

By recognizing the significance of, and need to advance the interrelationships between private and public sectors to develop and improve the local agriculture industry, and establish opportunities which identify the objectives and address the needs of the industry, this bill significantly helps to promote economically viable agriculture and food self-sufficiency in Hawaii.

For the reasons stated above, LURF is **in support of SB 1374**, and respectfully urges your favorable consideration of this bill.

Thank you for the opportunity to present testimony regarding this measure.

From: mailinglist@capitol.hawaii.gov
To: [WTLTestimony](#)
Cc: mz@conservehi.org
Subject: Submitted testimony for SB1374 on Feb 13, 2015 15:00PM
Date: Tuesday, February 10, 2015 5:13:49 PM
Attachments: [CCH testimony SB 1374 LCF Dole.pdf](#)

SB1374

Submitted on: 2/10/2015

Testimony for WTL/PSM/AGL on Feb 13, 2015 15:00PM in Conference Room 224

Submitted By	Organization	Testifier Position	Present at Hearing
Marjorie Ziegler	Conservation Council for Hawai'i	Oppose	No

Comments:

Please note that testimony submitted less than 24 hours prior to the hearing, improperly identified, or directed to the incorrect office, may not be posted online or distributed to the committee prior to the convening of the public hearing.

Do not reply to this email. This inbox is not monitored. For assistance please email webmaster@capitol.hawaii.gov



**Conservation Council
for Hawai'i**

Hawai'i's voice for wildlife

Kō Hawai'i / leo no nā holoholona lōhiu



Testimony Submitted to the
Senate Committees on Water and Land;
Public Safety, Intergovernmental and Military Affairs; and Agriculture

Hearing: Friday, February 13, 2015 3 pm, Room 224

In Opposition to SB 1374 Relating to Land Exchange

Aloha, Chairs Thielen, Espero, and Ruderman; Vice Chairs Galuteria, Baker, and Riviere; and Members of the Committees. The Conservation Council for Hawai'i opposes SB 1374, which appropriates \$500,000 and any additional unspecified amount from the Legacy Land Conservation Program to study a potential land exchange of state owned lands at the O'ahu Correctional Facility for private agricultural and watershed lands owned by Dole Foods.

The Legacy Land Conservation Program (LLCP) and Land Conservation Fund (LCF) were established by the Legislature to purchase lands in the public interest. A large coalition fought hard to establish the program and fund by law in the 1990s. The Legislature created a non-partisan commission of experts to vet applications for funding, consult with the Legislature regarding their recommendations and rankings (through the Senate President and House Speaker), and make recommendations for funding to the Board of Land and Natural Resources. The LCF has leveraged millions of dollars in private, county, and federal funds to protect valuable lands for the people and generations to come.

The LCF should not be used to fund a potential land exchange between the state and a private property owner. Funding such a study with the LCF is not authorized by the law and regulations governing the LLCP and would be improper. Use of the LCF for this purpose would also skirt the process established by the legislature to vet applications for funding from the LCF.

Here is a photo of one of the many important places that was purchased with the LCF. Please kokua. Do not raid this important fund or dilute this important program. Mahalo nui loa for the opportunity to testify.



Sincerely,

Marjorie Ziegler

Conservation Council for Hawai'i is a nonprofit, environmental membership organization dedicated to protecting native Hawaiian plants, animals, and ecosystems for future generations.

Established in 1950 and based in Honolulu, CCH is one of the largest and most effective wildlife organizations in Hawai'i with more than 5,000 members and supporters, including concerned citizens, educators, scientists, government agencies, and elected officials.

Through research, education, service, organizing, and legal advocacy, CCH works to stop the destruction of native wildlife and wild places in Hawai'i.

Since 1973, CCH has served as the Hawai'i state affiliate of the National Wildlife Federation.

Telephone/Fax: 808.593.0255 | email: info@conservehi.org | web: www.conservehi.org
P.O. Box 2923 | Honolulu, HI 96802 | Office: 250 Ward Ave., Suite 220 | Honolulu, HI 96814

President: Hannah Kihalani Springer | Vice-President: Julie Leialoha | Treasurer: Bianca Isaki | Secretary: Wayne Tanaka
Directors: Rick Barboza | Ryan Belcher | Maka'ala Ka'aumoana | Koalani Kaulukukui
Executive Director: Marjorie Ziegler | Administrator: Jonnetta Peters



From: mailinglist@capitol.hawaii.gov
To: [WTLTestimony](#)
Cc: jlee@cochawaii.org
Subject: Submitted testimony for SB1374 on Feb 13, 2015 15:00PM
Date: Thursday, February 12, 2015 10:27:12 AM
Attachments: [02-13-2015 Sen WTL-PSM-AGL SB 1374 - Dole Land Exchange.docx](#)

SB1374

Submitted on: 2/12/2015

Testimony for WTL/PSM/AGL on Feb 13, 2015 15:00PM in Conference Room 224

Submitted By	Organization	Testifier Position	Present at Hearing
Sherry Menor-McNamara	Chamber of Commerce Hawaii	Support	No

Comments:

Please note that testimony submitted less than 24 hours prior to the hearing, improperly identified, or directed to the incorrect office, may not be posted online or distributed to the committee prior to the convening of the public hearing.

Do not reply to this email. This inbox is not monitored. For assistance please email webmaster@capitol.hawaii.gov



**Testimony to the Senate Committee on Water and Land and Committee on
Public Safety, Intergovernmental and Military Affairs and Committee on
Agriculture
Friday, February 13, 2015 at 3:00 P.M.
Conference Room 224, State Capitol**

RE: SENATE BILL 1374 RELATING TO LAND EXCHANGE

Chairs Thielen and Espero and Ruderman, Vice Chairs Galuteria and Baker and Riviere, and Members of the Committees:

The Chamber of Commerce of Hawaii ("The Chamber") **supports** SB 1374, which appropriates funds to investigate the possibility of exchanging state land for land owned by Dole Food Company, Inc., and for costs of executing the exchange. Also appropriates funds to investigate the possibility of exchanging certain state lands between the department of public safety and department of agriculture.

The Chamber is the largest business organization in Hawaii, representing over 1,000 businesses. Approximately 80% of our members are small businesses with less than 20 employees. As the "Voice of Business" in Hawaii, the organization works on behalf of members and the entire business community to improve the state's economic climate and to foster positive action on issues of common concern.

Land availability and affordable prices and compatible leases must be available in order for agriculture to flourish and allow Hawaii to take the first steps to self-sustainability. The possible exchange of state land for Dole Food Company, Inc. land would increase the availability of agricultural land for the state and provide more opportunity for local farmers to expand their crops and thrive.

Thank you for the opportunity to testify.

From: mailinglist@capitol.hawaii.gov
To: [WTLTestimony](#)
Cc: lea.hong@tpl.org
Subject: Submitted testimony for SB1374 on Feb 13, 2015 15:00PM
Date: Tuesday, February 10, 2015 6:16:28 PM
Attachments: [TPL Testimony SB 1374.pdf](#)

SB1374

Submitted on: 2/10/2015

Testimony for WTL/PSM/AGL on Feb 13, 2015 15:00PM in Conference Room 224

Submitted By	Organization	Testifier Position	Present at Hearing
Lea Hong	The Trust for Public Land	Comments Only	No

Comments: See attached comments in testimony

Please note that testimony submitted less than 24 hours prior to the hearing, improperly identified, or directed to the incorrect office, may not be posted online or distributed to the committee prior to the convening of the public hearing.

Do not reply to this email. This inbox is not monitored. For assistance please email webmaster@capitol.hawaii.gov

THE TRUST *for* PUBLIC LAND

LAND FOR PEOPLE

THE TRUST FOR PUBLIC LAND'S COMMENTS REGARDING SB 1374 RELATING TO LAND EXCHANGE Senate Committees on Water & Land, Public Safety, Intergovernmental & Military Affairs, and Agriculture Friday, February 13, 3:00 p.m., Room 224

The Trust for Public Land has comments regarding SB 1374 relating to land exchange. This bill proposes studies of a land exchange of state owned lands at the O'ahu Correctional Facility for private agricultural and watershed lands in Central O'ahu/North Shore owned by Dole Foods LLC. The bill appropriates \$500,000 from the Legacy Land Conservation Program (LLCP) to study the Dole lands and an additional unspecified amount from the LLCP to study the O'ahu Correctional Facility land. The Trust for Public Land supports the preservation of the Dole agricultural and watershed lands and respects the innovative thinking and intent of the bill, but has the following concerns/comments regarding (1) whether Dole is a willing seller, (2) the appropriations out of the Legacy Land Conservation Program to fund the studies, and (3) whether the bill is supported by affected agencies, communities, and legislators.

Willing Seller

The Trust for Public Land is a voluntary land conservation organization that advocates for land conservation only where there are willing sellers/landowners. The Trust for Public Land does not know whether the landowner, Dole Foods LLC, is open to the proposed land exchange, or the extended timeframes apparently needed to study and accomplish the exchange. Expending \$500,000 and an additional unspecified amount on studies of the proposed land exchange would only make sense if Dole was willing to wait to sell its lands, and provided binding legal assurances to the State that it would not sell the land during the study period.

Legacy Land Conservation Program Appropriations

The Trust for Public Land also has concerns regarding the appropriation of \$500,000 and an additional unspecified amount from the Legacy Land Conservation Program (LLCP) to study the land exchange. Established in 2005, the LLCP receives 10% of the real estate conveyance tax, paid when a landowner sells land (other portions of the tax are allocated to the affordable housing rental trust fund, the natural area reserve fund, and the general fund). The Legislature created a non-partisan commission of experts to vet applications for funding, consult with the Legislature regarding their recommendations and rankings (through the Senate President and House Speaker), and make recommendations for funding to the Board of Land and Natural Resources.

The LLCP has model of successful public and private partnerships, conserving over 6,600 acres of iconic and important land in every county – Black Pot Beach Park at Hanalei Bay on Kaua'i, the sacred waters of Kawaikapu on Moloka'i, the 1-mile of shoreline and coastal wetlands of Nu'u on Maui, the ancient Hawaiian village and marine protected areas of Lapakahi State Historical Park on Hawai'i

Island, and agricultural land in Wai‘anae, O‘ahu that through the non-profit MA‘O Organic Farm, employs and finances the college education of over 50 youth from Leeward O‘ahu.

The LLCP efficiently uses funds, leveraging an average of one dollar or more for every dollar spent. For example, The Trust for Public Land assisted the State in acquiring 3,582 acres of the Honouliuli Forest Reserve in the Wai‘anae Mountain Range, raising \$3,7635,500 in federal funding. The LLCP contributed \$982,956, towards an over \$4 million purchase. Every dollar from the LLCP was matched by more than 3 additional federal dollars to purchase the property, which includes forests that protect clean drinking water for O‘ahu residents, and habitat for over 90 rare and endangered plant and animal species, including the O‘ahu Elepaio (endangered forest bird) and the famed “singing” endangered kahuli tree snail.

This bill proposes an appropriation of \$500,000 and an additional unspecified amount from the LLCP to fund studies of the land exchange. The Trust for Public Land has several concerns/questions. First, the appropriation would supplant the application, ranking, and legislative consultation process the Legislature itself established in HRS 175A-5. Second, it is not clear that appropriations for studying a land exchange are an allowed use of the fund, which states it is to be used for: “[t]he acquisition of interests or rights in land having value as a resource to the State, whether in fee title or through the establishment of permanent conservation easements under chapter 198 or agricultural easements,” and other administrative costs. HRS §175A-5(1). Finally, there will be multiplier effect greater than just the reduction of \$500,000 and the additional unspecified amount in the bill. The LLCP usually leverages 1-3 or more dollars in federal, county, and/or private funds for every dollar spent on conserving land. Taking away 1 dollar from the LLCP really means a total loss of 2-4 state, federal, county and private dollars for land conservation.

Affected Agencies, Communities, Legislators

The Trust for Public Land also does not know whether the affected state agencies (Department of Public Safety, Department of Land and Natural Resources, Department of Agriculture), the communities surrounding the O‘ahu and Halawa Correctional Facilities, or the legislators from these districts support the proposed land exchange.

Although The Trust for Public Land respects the innovative thinking and intent to preserve agricultural and watershed land that is behind the bill, we have the concerns/comments/questions discussed above. I apologize that I cannot attend the hearing because of a prior commitment.

Mahalo for this opportunity to testify -

A handwritten signature in cursive script, appearing to read "Lea Hong".

Lea Hong
Hawaiian Islands State Director

From: mailinglist@capitol.hawaii.gov
To: [WTLTestimony](#)
Cc: christina@hilt.org
Subject: Submitted testimony for SB1374 on Feb 13, 2015 15:00PM
Date: Friday, February 13, 2015 10:39:47 AM
Attachments: [SB 1374 - HILT Comments.pdf](#)

SB1374

Submitted on: 2/13/2015

Testimony for WTL/PSM/AGL on Feb 13, 2015 15:00PM in Conference Room 224

Submitted By	Organization	Testifier Position	Present at Hearing
Christina Aiu	Hawaiian Islands Land Trust	Comments Only	No

Comments: See attached comments.

Please note that testimony submitted less than 24 hours prior to the hearing, improperly identified, or directed to the incorrect office, may not be posted online or distributed to the committee prior to the convening of the public hearing.

Do not reply to this email. This inbox is not monitored. For assistance please email webmaster@capitol.hawaii.gov



**HAWAIIAN ISLANDS LAND TRUST'S COMMENTS
REGARDING SB 1374 RELATING TO LAND EXCHANGE
Senate Committees on Water & Land,
Public Safety, Intergovernmental & Military Affairs, and Agriculture
Friday, February 13, 3:00 p.m., Room 224**

Hawaiian Islands Land Trust has comments regarding SB 1374 relating to land exchange. This bill proposes studies of a land exchange of state owned lands at the O'ahu Correctional Facility for private agricultural and watershed lands in Central O'ahu/North Shore owned by Dole Foods LLC. The bill appropriates \$500,000 from the Legacy Land Conservation Program (LLCP) to study the Dole lands and an additional unspecified amount from the LLCP to study the O'ahu Correctional Facility land. While Hawaiian Islands Land Trust supports preservation of the Dole agricultural and watershed lands and respects the intent of the bill, it has comments/concerns regarding the appropriation of \$500,000 and an additional unspecified amount from the Legacy Land Conservation Program (LLCP) to study the land exchange.

Established in 2005, the LLCP receives 10% of the real estate conveyance tax, paid when a landowner sells land (other portions of the tax are allocated to the affordable housing rental trust fund, the natural area reserve fund, and the general fund). The LLCP has conserved over 6,600 acres of iconic and important land in every county – Black Pot Beach Park at Hanalei Bay on Kaua'i, the sacred waters of Kawaikapu on Moloka'i, the 1-mile of shoreline and coastal wetlands of Nu'u on Maui, the ancient Hawaiian village and marine protected areas of Lapakahi State Historical Park on Hawai'i Island, agricultural land in Wai'anae, O'ahu, and recently Maunawila Heiau in Hau'ula, O'ahu.

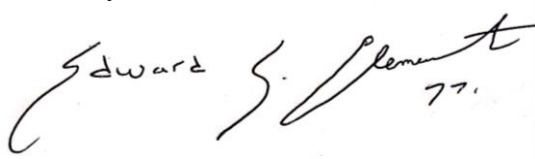
The LLCP efficiently uses funds, leveraging an average of one dollar or more for every dollar spent. For example, when Hawaiian Islands Land Trust acquired 81 acres of coastal wetlands and shoreline in Nu'u, Maui, the LLCP contributed \$1.8 million for a \$4 million purchase. Because of the LLCP, Hawaiian Islands Land Trust was able to leverage \$2.2 million in federal and private dollars to purchase a property that contains some of the healthiest coastal wetlands in the State, numerous pre-contact archaeological sites, and recreational fishing areas that have been used by local fishermen for centuries. The property is now forever conserved and open to Hawai'i residents and visitors for education, camping, hiking, fishing, and general recreation.

This bill proposes an appropriation of \$500,000 and an additional unspecified amount from the LLCP to fund studies of the land exchange. Hawaiian Islands Land Trust has several concerns/comments. First, the appropriation would skirt the application, ranking, and legislative consultation process the Legislature itself established in HRS 175A-5. Second, it is not clear that appropriations for studying a land exchange are an allowed use of the fund, which states it is to be used for: "[t]he acquisition of interests or rights in land having value as a resource to the

State, whether in fee title or through the establishment of permanent conservation easements under chapter 198 or agricultural easements,” and other administrative costs. HRS §175A-5(1). Finally, there will be multiplier effect greater than just the reduction of \$500,000 and the additional unspecified amount in the bill. The LLCP usually leverages 1-3 or more dollars in federal, county, and/or private funds for every dollar spent on conserving land. Taking away 1 dollar from the LLCP really means a total loss of 2-4 state, federal, county and private dollars for land conservation.

Mahalo for the opportunity to provide testimony.

Sincerely,

A handwritten signature in black ink, reading "Edward S. Clement, Jr." with a stylized flourish at the end. The signature is written on a white background with a vertical line to its right.

Edward Sortwell Clement, Jr.
Executive Director, Hawaiian Islands Land Trust

From: mailinglist@capitol.hawaii.gov
To: [WTLTestimony](#)
Cc: chris@hfbf.org
Subject: Submitted testimony for SB1374 on Feb 13, 2015 15:00PM
Date: Wednesday, February 11, 2015 8:46:39 PM
Attachments: [SB 1374 Dole Land Exchange WTL PSM AGL 02 13 15.pdf](#)

SB1374

Submitted on: 2/11/2015

Testimony for WTL/PSM/AGL on Feb 13, 2015 15:00PM in Conference Room 224

Submitted By	Organization	Testifier Position	Present at Hearing
Chris Manfredi	Hawaii Farm Bureau	Support	Yes

Comments:

Please note that testimony submitted less than 24 hours prior to the hearing, improperly identified, or directed to the incorrect office, may not be posted online or distributed to the committee prior to the convening of the public hearing.

Do not reply to this email. This inbox is not monitored. For assistance please email webmaster@capitol.hawaii.gov



P.O. Box 253, Kunia, Hawai'i 96759
Phone: (808) 848-2074; Fax: (808) 848-1921
e-mail info@hfbf.org; www.hfbf.org

February 13, 2015

HEARING BEFORE THE
SENATE COMMITTEE ON WATER AND LAND
SENATE COMMITTEE ON PUBLIC SAFETY, INTERGOVERNMENTAL AND
MILITARY AFFAIRS
SENATE COMMITTEE ON AGRICULTURE

TESTIMONY ON SB 1374
REALTING TO LAND EXCHANGE

Room 224
3:00 PM

Aloha Chair Thielen, Chair Espero, Chair Ruderman, Vice Chairs, and Members of the Committees:

I am Christopher Manfredi, President of the Hawaii Farm Bureau (HFB). Organized since 1948, the HFB is comprised of 1,932 farm family members statewide, and serves as Hawaii's voice of agriculture to protect, advocate and advance the social, economic and educational interest of our diverse agricultural community.

HFB strongly supports SB 1374, which appropriates funds to investigate the possibility of exchanging state land for land owned by Dole Food Company, Inc., and for costs of executing the exchange and appropriates funds to investigate the possibility of exchanging certain state lands between the department of public safety and department of agriculture.

HFB believes that in order for agriculture to flourish in Hawaii and reach their full potential, land availability and long-term leases at affordable and predictable lease rental rates are critical. The acquisition by the state of the Dole Lands will significantly increase the available agricultural land under the State's control and will provide farmers with long-term leases that will enhance the economic viability of Hawaii's agriculture industry.

We believe this is an opportunity to further support and expand the state's ability to provide prime agricultural lands for farmers, which is consistent with the State's goal of increasing self-sufficiency and sustainability.

Thank you for the opportunity to testify on this measure.

From: [Joy Gold](#)
To: [WTLTestimony](#)
Cc: [Larry Jefts \(ljefts@aloha.net\)](mailto:ljefts@aloha.net)
Subject: SB1374, Land Exchange - WTL/PSM/AGL Hearing, Fri Feb 13
Date: Wednesday, February 11, 2015 10:20:55 AM
Attachments: [LJF_SB1374_SenWTL_PSM_AGL.pdf](#)

Aloha,

On behalf of Larry Jefts, owner and operator of Larry Jefts Farms, LLC, please accept the attached testimony for:

SB 1374, Land Exchange
Sen WTL/PSM/AGL Hearing
Friday Feb 13 2015 – 3:00pm
Room 224

Please call me at 368-1146 if there are any questions about the testimony submittal.

Thank you,

Joy

Joy Gold
Joy Gold Unlimited
1136 Union Mall, Ste. 403
Honolulu, Hawaii 96813
Phone: 808-526-3770 Mobile: 808-368-1146 Email: joy@joygoldunlimited.com
www.joygoldunlimited.com
"Working with you to achieve your organization's mission and public policy goals"

CONFIDENTIALITY NOTICE: This e-mail message, including any attachments, is for the sole use of the intended recipient(s) and may contain confidential and privileged information. Any unauthorized review, use, disclosure or distribution is prohibited. If you are not the intended recipient, please contact the sender by reply e-mail and destroy all copies of the original message.

**LARRY JEFTS FARMS, LLC
PO BOX 27
KUNIA, HAWAII 96759
(808) 688-2892**

**SB 1374, Relating to Land Exchange
Senate WTL/PSM/AGL Committee
Friday, Feb. 13, 2015
3:00 pm
Conference Room 224**

**Testimony by: Larry Jeffs
Position: Support**

Chairs Thielen, Espero, and Ruderman, and Members of the Senate WTL/PSM/AGL Committees:

I am Larry Jeffs, owner and operator of Larry Jeffs Farms, LLC, which is part of our family-run business of farms on Oahu and Molokai, under the administrative umbrella of Sugarland Growers, Inc. We have more than 35 years of Hawaii farm experience on Molokai and Oahu.

SB1374 is supported because it facilitates the State's investigation and executing, if appropriate, the exchange of state land for large tracts of land in Central Oahu and the North Shore area owned by Dole Food Company, Inc.

The proposed land exchange is preferred over parcel by parcel sales and at varying prices per parcel. A consolidated approach by the State would provide consistent agriculture infrastructure oversight and agriculture development in the Central Oahu and North Shore regions of Oahu.

Your support of this measure is appreciated. Thank you for the opportunity to present testimony.

From: mailinglist@capitol.hawaii.gov
To: [WTLTestimony](#)
Cc: gottlieb@hawaii.rr.com
Subject: Submitted testimony for SB1374 on Feb 13, 2015 15:00PM
Date: Thursday, February 12, 2015 10:57:02 AM

SB1374

Submitted on: 2/12/2015

Testimony for WTL/PSM/AGL on Feb 13, 2015 15:00PM in Conference Room 224

Submitted By	Organization	Testifier Position	Present at Hearing
Alan Gottlieb	Hawaii Cattlemen's Council	Support	No

Comments: For agriculture to flourish in Hawaii and reach their full potential, land availability and long-term leases at affordable and predictable lease rental rates are critical. The acquisition by the state of the Dole Lands will significantly increase the available agricultural land under the State's control and will provide farmers with long-term leases that will enhance the economic viability of Hawaii's agriculture industry.

Please note that testimony submitted less than 24 hours prior to the hearing, improperly identified, or directed to the incorrect office, may not be posted online or distributed to the committee prior to the convening of the public hearing.

Do not reply to this email. This inbox is not monitored. For assistance please email webmaster@capitol.hawaii.gov

From: mailinglist@capitol.hawaii.gov
To: [WTLTestimony](#)
Cc: hawaiiifish@gmail.com
Subject: Submitted testimony for SB1374 on Feb 13, 2015 15:00PM
Date: Thursday, February 12, 2015 1:54:31 PM

SB1374

Submitted on: 2/12/2015

Testimony for WTL/PSM/AGL on Feb 13, 2015 15:00PM in Conference Room 224

Submitted By	Organization	Testifier Position	Present at Hearing
Ronald Weidenbach	Hawaii Aquaculture & Aquaponics Association	Support	No

Comments: The Hawaii Aquaculture and Aquaponic Association (HAAA) strongly supports SB 1374 Relating to Land Exchange. The ultimate goal of this effort as far as agriculture and aquaculture are concerned are to investigate and ways for the State to acquire several thousand acres of fallow Dole Food Company, Inc. lands currently for sale between central Oahu and the north shore by land exchange before they are sold for residential development and lost forever for local food production, and to execute the exchange(s). Specific TMK lots of the Dole property are identified and potential land exchange options are provided. The HAAA strongly supports this measure to investigate and execute to this critical action.

Please note that testimony submitted less than 24 hours prior to the hearing, improperly identified, or directed to the incorrect office, may not be posted online or distributed to the committee prior to the convening of the public hearing.

Do not reply to this email. This inbox is not monitored. For assistance please email webmaster@capitol.hawaii.gov

From: mailinglist@capitol.hawaii.gov
To: [WTLTestimony](#)
Cc: swhalen@harc-hspa.com
Subject: Submitted testimony for SB1374 on Feb 13, 2015 15:00PM
Date: Thursday, February 12, 2015 6:22:44 PM

SB1374

Submitted on: 2/12/2015

Testimony for WTL/PSM/AGL on Feb 13, 2015 15:00PM in Conference Room 224

Submitted By	Organization	Testifier Position	Present at Hearing
Stephanie A Whalen	HARC	Support	No

Comments: strong support

Please note that testimony submitted less than 24 hours prior to the hearing, improperly identified, or directed to the incorrect office, may not be posted online or distributed to the committee prior to the convening of the public hearing.

Do not reply to this email. This inbox is not monitored. For assistance please email webmaster@capitol.hawaii.gov

From: mailinglist@capitol.hawaii.gov
To: [WTLTestimony](#)
Cc: kat.caphi@gmail.com
Subject: Submitted testimony for SB1374 on Feb 13, 2015 15:00PM
Date: Friday, February 13, 2015 6:32:03 AM
Attachments: [2.13.15 WAL-PSM-AGLTestimony SB 1374.pdf](#)

SB1374

Submitted on: 2/13/2015

Testimony for WTL/PSM/AGL on Feb 13, 2015 15:00PM in Conference Room 224

Submitted By	Organization	Testifier Position	Present at Hearing
Kat Brady	Community Alliance on Prisons	Comments Only	No

Comments: Please see attached comments. Mahalo!

Please note that testimony submitted less than 24 hours prior to the hearing, improperly identified, or directed to the incorrect office, may not be posted online or distributed to the committee prior to the convening of the public hearing.

Do not reply to this email. This inbox is not monitored. For assistance please email webmaster@capitol.hawaii.gov

From: mailinglist@capitol.hawaii.gov
To: [WTLTestimony](#)
Cc: ahuntemer@aol.com
Subject: Submitted testimony for SB1374 on Feb 13, 2015 15:00PM
Date: Thursday, February 12, 2015 5:25:35 PM

SB1374

Submitted on: 2/12/2015

Testimony for WTL/PSM/AGL on Feb 13, 2015 15:00PM in Conference Room 224

Submitted By	Organization	Testifier Position	Present at Hearing
Angela Huntemer	Individual	Oppose	No

Comments: Aloha Chairs. Vice Chairs and Committee members. I support conserving the Dole lands, but cannot support this bill as written. This bill would appropriate \$500,000 from the Legacy Land Conservation Fund to "investigate" the possibility of a land swap between the State and Castle and Cooke. Land trusts, non-profits, and city/state agencies annually apply for funding from the State Legacy Land Fund for the purposes of land or conservation easement acquisition (not to investigate or research the possibility of conservation). It is a transparent and competitive process and it is my understanding that the commission has previously taken the position that funds should only be used for actual land or conservation easement acquisitions. Bypassing the application process with a direct bill and diverting the funds to research rather than conservation are both bad precedents. Mahalo for your time. Angela Huntemer North Shore resident.

Please note that testimony submitted less than 24 hours prior to the hearing, improperly identified, or directed to the incorrect office, may not be posted online or distributed to the committee prior to the convening of the public hearing.

Do not reply to this email. This inbox is not monitored. For assistance please email webmaster@capitol.hawaii.gov

From: mailinglist@capitol.hawaii.gov
To: [WTLTestimony](#)
Cc: alohabettylou@hotmail.com
Subject: Submitted testimony for SB1374 on Feb 13, 2015 15:00PM
Date: Monday, February 09, 2015 9:17:28 PM

SB1374

Submitted on: 2/9/2015

Testimony for WTL/PSM/AGL on Feb 13, 2015 15:00PM in Conference Room 224

Submitted By	Organization	Testifier Position	Present at Hearing
Betty Lou Larson	Individual	Support	No

Comments: I support this bill. We need to be creative to grow agriculture in new ways to create jobs for young workers and to be more sustainable in our food supply. This bill would have great potential to create a diverse and strong agricultural sector again in Hawaii. Thank you for hearing this bill.

Please note that testimony submitted less than 24 hours prior to the hearing, improperly identified, or directed to the incorrect office, may not be posted online or distributed to the committee prior to the convening of the public hearing.

Do not reply to this email. This inbox is not monitored. For assistance please email webmaster@capitol.hawaii.gov

From: mailinglist@capitol.hawaii.gov
To: [WTLTestimony](#)
Cc: ddruz@aol.com
Subject: Submitted testimony for SB1374 on Feb 13, 2015 15:00PM
Date: Friday, February 13, 2015 12:18:03 AM

SB1374

Submitted on: 2/13/2015

Testimony for WTL/PSM/AGL on Feb 13, 2015 15:00PM in Conference Room 224

Submitted By	Organization	Testifier Position	Present at Hearing
David Druz	Individual	Support	No

Comments: I support this bill

Please note that testimony submitted less than 24 hours prior to the hearing, improperly identified, or directed to the incorrect office, may not be posted online or distributed to the committee prior to the convening of the public hearing.

Do not reply to this email. This inbox is not monitored. For assistance please email webmaster@capitol.hawaii.gov

From: mailinglist@capitol.hawaii.gov
To: [WTLTestimony](#)
Cc: dfukawa@wcitarch.com
Subject: Submitted testimony for SB1374 on Feb 13, 2015 15:00PM
Date: Wednesday, February 11, 2015 4:25:06 PM

SB1374

Submitted on: 2/11/2015

Testimony for WTL/PSM/AGL on Feb 13, 2015 15:00PM in Conference Room 224

Submitted By	Organization	Testifier Position	Present at Hearing
Dean Fukawa	Individual	Support	No

Comments: For those of you who care about the Hawaii of the future, Senator Dela Cruz is on a mission, shaping Hawaii into a more viable and sustainable agricultural entity. Currently, we rely heavily on imported foods to feed our growing population, Senator Dela Cruz is fighting preserving our agricultural land and setting up an epicenter of infrastructure, allowing Hawaii to help feed itself with SB 1374. Kudos Senator Dela Cruz for promoting hope and an alternative means for preserving the future of Hawaii,

Please note that testimony submitted less than 24 hours prior to the hearing, improperly identified, or directed to the incorrect office, may not be posted online or distributed to the committee prior to the convening of the public hearing.

Do not reply to this email. This inbox is not monitored. For assistance please email webmaster@capitol.hawaii.gov

From: mailinglist@capitol.hawaii.gov
To: [WTLTestimony](#)
Cc: orchid6128@aol.com
Subject: Submitted testimony for SB1374 on Feb 13, 2015 15:00PM
Date: Thursday, February 12, 2015 1:15:45 AM

SB1374

Submitted on: 2/12/2015

Testimony for WTL/PSM/AGL on Feb 13, 2015 15:00PM in Conference Room 224

Submitted By	Organization	Testifier Position	Present at Hearing
deb mader	Individual	Oppose	No

Comments: Aloha, I do not support this bill because I don't think money from the land conservation fund was meant to build a prison. The money should be used for sustainable ag or other ways to conserve the land. Mahalo Deb Mader

Please note that testimony submitted less than 24 hours prior to the hearing, improperly identified, or directed to the incorrect office, may not be posted online or distributed to the committee prior to the convening of the public hearing.

Do not reply to this email. This inbox is not monitored. For assistance please email webmaster@capitol.hawaii.gov

From: mailinglist@capitol.hawaii.gov
To: [WTLTestimony](#)
Cc: ellynsollars@me.com
Subject: *Submitted testimony for SB1374 on Feb 13, 2015 15:00PM*
Date: Friday, February 13, 2015 9:59:10 AM

SB1374

Submitted on: 2/13/2015

Testimony for WTL/PSM/AGL on Feb 13, 2015 15:00PM in Conference Room 224

Submitted By	Organization	Testifier Position	Present at Hearing
Ellyn Sollars	Individual	Support	No

Comments:

Please note that testimony submitted less than 24 hours prior to the hearing, improperly identified, or directed to the incorrect office, may not be posted online or distributed to the committee prior to the convening of the public hearing.

Do not reply to this email. This inbox is not monitored. For assistance please email webmaster@capitol.hawaii.gov

From: mailinglist@capitol.hawaii.gov
To: [WTLTestimony](#)
Cc: fmencher@hawaii.rr.com
Subject: Submitted testimony for SB1374 on Feb 13, 2015 15:00PM
Date: Thursday, February 12, 2015 11:18:43 AM

SB1374

Submitted on: 2/12/2015

Testimony for WTL/PSM/AGL on Feb 13, 2015 15:00PM in Conference Room 224

Submitted By	Organization	Testifier Position	Present at Hearing
Frederick M. Mencher	Individual	Support	No

Comments: Dear Chairs Thielen, Espero, and Ruderman; Vice Chairs Galuteria, Baker, and Riviere; and Members of the Committees: I am sending this testimony to express my strong support for SB 1374, "Relating to Land Exchange." As the recent threat of a shipping slowdown emphasizes, Hawaii is critically vulnerable to shortages in food and feed because of our dependence on imports. We cannot afford to lose thousands of acres of potentially productive agricultural land to development, especially on Oahu where most of Hawaii's population is concentrated. State acquisition of the Dole lands is the most likely means by which these lands can be retained for agricultural purposes, and through which the land can be leased long-term at reasonable rates to productive farmers. Please support SB 1374. Thank you for the opportunity to testify on this important measure. Frederick M. Mencher
Nuuanu

Please note that testimony submitted less than 24 hours prior to the hearing, improperly identified, or directed to the incorrect office, may not be posted online or distributed to the committee prior to the convening of the public hearing.

Do not reply to this email. This inbox is not monitored. For assistance please email webmaster@capitol.hawaii.gov

From: mailinglist@capitol.hawaii.gov
To: [WTLTestimony](#)
Cc: ncsugano@gmail.com
Subject: Submitted testimony for SB1374 on Feb 13, 2015 15:00PM
Date: Wednesday, February 11, 2015 11:21:36 PM

SB1374

Submitted on: 2/11/2015

Testimony for WTL/PSM/AGL on Feb 13, 2015 15:00PM in Conference Room 224

Submitted By	Organization	Testifier Position	Present at Hearing
Jari S.K. Sugano	Individual	Support	No

Comments: SB1374 Chairs Theiland, Espero & Ruderman and members of the Senate Water & Land, Agriculture and Public Safety Committee, I thank you for this opportunity to provide my personal testimony in support of SB 1374 Relating to Land Exchange. My name is Jari Sugano and I am a County Extension Agent at UH Manoa, College of Tropical Agriculture and Human Resources. Today, I am providing personal testimony I support this bill provided that its passage does not replace or adversely impact priorities as indicated in the University's Board of Regents Approved Executive Biennium Budget. Let me state from the onset of this testimony that, as a member of the faculty at the University of Hawaii at Manoa, it is important to note that I support the prioritization process that the administration utilizes to establish their annual budgetary request to the legislature and can only advocate for additional funding of university programs if it does not negatively impact existing requests that are included in the executive budget.

Please note that testimony submitted less than 24 hours prior to the hearing, improperly identified, or directed to the incorrect office, may not be posted online or distributed to the committee prior to the convening of the public hearing.

Do not reply to this email. This inbox is not monitored. For assistance please email webmaster@capitol.hawaii.gov

From: mailinglist@capitol.hawaii.gov
To: [WTLTestimony](#)
Cc: jonikamiya@gmail.com
Subject: *Submitted testimony for SB1374 on Feb 13, 2015 15:00PM*
Date: Wednesday, February 11, 2015 4:32:28 PM

SB1374

Submitted on: 2/11/2015

Testimony for WTL/PSM/AGL on Feb 13, 2015 15:00PM in Conference Room 224

Submitted By	Organization	Testifier Position	Present at Hearing
Joni Kamiya	Individual	Support	No

Comments:

Please note that testimony submitted less than 24 hours prior to the hearing, improperly identified, or directed to the incorrect office, may not be posted online or distributed to the committee prior to the convening of the public hearing.

Do not reply to this email. This inbox is not monitored. For assistance please email webmaster@capitol.hawaii.gov

From: mailinglist@capitol.hawaii.gov
To: [WTLTestimony](#)
Cc: kmurray.testimony@gmail.com
Subject: Submitted testimony for SB1374 on Feb 13, 2015 15:00PM
Date: Tuesday, February 10, 2015 8:59:26 PM

SB1374

Submitted on: 2/10/2015

Testimony for WTL/PSM/AGL on Feb 13, 2015 15:00PM in Conference Room 224

Submitted By	Organization	Testifier Position	Present at Hearing
Karen Murray	Individual	Oppose	No

Comments: I strongly oppose this very flawed Senate Bill 1374. First, this would enable a sprawl which would doom Oahu as far as having any open spaces and would facilitate overflowing into our already besieged country area. Secondly, Dole would not trade this to lose in a deal. They have made this area pilau and would move on to more. Where would the water come from for development of this area? The land they would trade for is yet to be specified. This is inappropriate for proposing a trade. Thirdly, the land being traded is most likely contested land with the Hawaiian nation and it is not proper to transfer State lands into private hands. Fourthly, it is inappropriate to use funds from the land conservation fund for this development move which is not about conservation.

Please note that testimony submitted less than 24 hours prior to the hearing, improperly identified, or directed to the incorrect office, may not be posted online or distributed to the committee prior to the convening of the public hearing.

Do not reply to this email. This inbox is not monitored. For assistance please email webmaster@capitol.hawaii.gov

From: mailinglist@capitol.hawaii.gov
To: [WTLTestimony](#)
Cc: pahinuik001@hawaii.rr.com
Subject: Submitted testimony for SB1374 on Feb 13, 2015 15:00PM
Date: Wednesday, February 11, 2015 8:54:07 PM
Attachments: [SB1374 Testimony.docx](#)

SB1374

Submitted on: 2/11/2015

Testimony for WTL/PSM/AGL on Feb 13, 2015 15:00PM in Conference Room 224

Submitted By	Organization	Testifier Position	Present at Hearing
Kathleen M Pahinui	Individual	Support	No

Comments:

Please note that testimony submitted less than 24 hours prior to the hearing, improperly identified, or directed to the incorrect office, may not be posted online or distributed to the committee prior to the convening of the public hearing.

Do not reply to this email. This inbox is not monitored. For assistance please email webmaster@capitol.hawaii.gov

COMMITTEE ON WATER AND LAND

Senator Laura H. Thielen, Chair
Senator Brickwood Galuteria, Vice Chair

COMMITTEE ON PUBLIC SAFETY, INTERGOVERNMENTAL AND MILITARY AFFAIRS

Senator Will Espero, Chair
Senator Rosalyn H. Baker, Vice Chair

COMMITTEE ON AGRICULTURE

Senator Russell E. Ruderman, Chair
Senator Gil Riviere, Vice Chair

NOTICE OF HEARING

DATE: Friday, February 13, 2015
TIME: 3:00 pm
PLACE: Conference Room 224
State Capitol
415 South Beretania Street

A G E N D A

[SB 1374](#)
[Status &](#)
[Testimony](#)

RELATING TO LAND EXCHANGE.
Appropriates funds to investigate the possibility of exchanging state land for land owned by Dole Food Company, Inc., and for costs of executing the exchange. Appropriates funds to investigate the possibility of exchanging certain state lands between the department of public safety and department of agriculture.

WTL/PSM/AGL,
WAM

Testimony in Support

Aloha Committee Chairs and Committee Members:

I strongly urge you to support SB 1374 in order to protect our agricultural lands in perpetuity. Every acre that is sold is being turned into fancy “gentleman farms” with big homes and little to no agriculture. The City and County is unable to keep track or enforce zoning rules. We are losing our precious ag land piece by piece and in about 2-5 years we will have nothing left except lots of homes dotting the North Shore.

The land is important to our food security and we need to keep a green belt on this island. Your support is critical to long-term sustainability for agriculture on this island.

Mahalo for your consideration. Malama aina.

Kathleen M. Pahinui, Waialua Resident

From: mailinglist@capitol.hawaii.gov
To: [WTLTestimony](#)
Cc: kawamotok008@hawaii.rr.com
Subject: *Submitted testimony for SB1377 on Feb 13, 2015 15:45PM*
Date: Wednesday, February 11, 2015 9:57:43 PM

SB1377

Submitted on: 2/11/2015

Testimony for WTL on Feb 13, 2015 15:45PM in Conference Room 224

Submitted By	Organization	Testifier Position	Present at Hearing
Kurt Kawamoto	Individual	Oppose	No

Comments:

Please note that testimony submitted less than 24 hours prior to the hearing, improperly identified, or directed to the incorrect office, may not be posted online or distributed to the committee prior to the convening of the public hearing.

Do not reply to this email. This inbox is not monitored. For assistance please email webmaster@capitol.hawaii.gov

From: mailinglist@capitol.hawaii.gov
To: [WTLTestimony](#)
Cc: underthesea12@gmail.com
Subject: Submitted testimony for SB1377 on Feb 13, 2015 15:45PM
Date: Wednesday, February 11, 2015 10:41:21 PM
Attachments: [To the Hawaii State Legislature.docx](#)

SB1377

Submitted on: 2/11/2015

Testimony for WTL on Feb 13, 2015 15:45PM in Conference Room 224

Submitted By	Organization	Testifier Position	Present at Hearing
Kurt Taguma	Individual	Oppose	No

Comments: Please submit this for sb1377 hearing on my behalf of a disappointed ocean user

Please note that testimony submitted less than 24 hours prior to the hearing, improperly identified, or directed to the incorrect office, may not be posted online or distributed to the committee prior to the convening of the public hearing.

Do not reply to this email. This inbox is not monitored. For assistance please email webmaster@capitol.hawaii.gov

To the Hawaii State Legislature,

I am against the bill sb1377 that is trying to ban spearfishing in the Waikiki MLCD. The bill is poorly written and is generally trying to put ALL the blame of reef damage on one group of ocean users. How can this be? I know there are many surf schools, SUP, kayak, swimmers, and tourist using the same area. I personally do not shoot the reef nor grab live corals. But I know that people standing on the reef, usually tourists, do a lot of damage. So now do we ban tourists from using that same area?

If you really want to save the reef, come up with a bill that has actual FACTS showing the difference of the reef in the area that is always closed, to the area that is opened every other year. I would hope that someone realizes what a ridiculous bill this is to single out one group of ocean users.

I am an avid spearfisherman, fisherman, and ocean lover. I do care very much to have a healthy reef system but please go about it with more scientific evidence rather than introduce a bill that is half baked.

A very concerned citizen,

Kurt Taguma

From: mailinglist@capitol.hawaii.gov
To: [WTLTestimony](#)
Cc: alapio638@hotmail.com
Subject: Submitted testimony for SB1374 on Feb 13, 2015 15:00PM
Date: Thursday, February 12, 2015 10:31:56 PM

SB1374

Submitted on: 2/12/2015

Testimony for WTL/PSM/AGL on Feb 13, 2015 15:00PM in Conference Room 224

Submitted By	Organization	Testifier Position	Present at Hearing
linda noey	Individual	Comments Only	No

Comments: I suport this bill. I think it is a great way to add ag lands and keep the country country.

Please note that testimony submitted less than 24 hours prior to the hearing, improperly identified, or directed to the incorrect office, may not be posted online or distributed to the committee prior to the convening of the public hearing.

Do not reply to this email. This inbox is not monitored. For assistance please email webmaster@capitol.hawaii.gov

From: mailinglist@capitol.hawaii.gov
To: [WTLTestimony](#)
Cc: malian@kauspecialtycoffee.com
Subject: *Submitted testimony for SB1374 on Feb 13, 2015 15:00PM*
Date: Thursday, February 12, 2015 9:22:42 AM

SB1374

Submitted on: 2/12/2015

Testimony for WTL/PSM/AGL on Feb 13, 2015 15:00PM in Conference Room 224

Submitted By	Organization	Testifier Position	Present at Hearing
Malian Lahey	Individual	Oppose	No

Comments:

Please note that testimony submitted less than 24 hours prior to the hearing, improperly identified, or directed to the incorrect office, may not be posted online or distributed to the committee prior to the convening of the public hearing.

Do not reply to this email. This inbox is not monitored. For assistance please email webmaster@capitol.hawaii.gov

From: mailinglist@capitol.hawaii.gov
To: [WTLTestimony](#)
Cc: mark.phillipson@syngenta.com
Subject: Submitted testimony for SB1374 on Feb 13, 2015 15:00PM
Date: Wednesday, February 11, 2015 3:59:08 PM

SB1374

Submitted on: 2/11/2015

Testimony for WTL/PSM/AGL on Feb 13, 2015 15:00PM in Conference Room 224

Submitted By	Organization	Testifier Position	Present at Hearing
Mark Phillipson	Individual	Support	No

Comments: The Whitmore project is a robust project that makes sense for the state and County of Oahu. This prime agricultural land has been under utilized for decades and Senator Donovan's plan to revitalize this area is timely and valid. The land, water, supporting buildings and infrastrure exists. I strongly encourage the Chair and the members to support this important measure for todays and future generations of farmers. Mahalo.

Please note that testimony submitted less than 24 hours prior to the hearing, improperly identified, or directed to the incorrect office, may not be posted online or distributed to the committee prior to the convening of the public hearing.

Do not reply to this email. This inbox is not monitored. For assistance please email webmaster@capitol.hawaii.gov

From: mailinglist@capitol.hawaii.gov
To: [WTLTestimony](#)
Cc: MSMatson@hawaii.rr.com
Subject: *Submitted testimony for SB1374 on Feb 13, 2015 15:00PM*
Date: Thursday, February 12, 2015 7:34:17 AM

SB1374

Submitted on: 2/12/2015

Testimony for WTL/PSM/AGL on Feb 13, 2015 15:00PM in Conference Room 224

Submitted By	Organization	Testifier Position	Present at Hearing
Michelle Matson	Individual	Oppose	No

Comments:

Please note that testimony submitted less than 24 hours prior to the hearing, improperly identified, or directed to the incorrect office, may not be posted online or distributed to the committee prior to the convening of the public hearing.

Do not reply to this email. This inbox is not monitored. For assistance please email webmaster@capitol.hawaii.gov

From: mailinglist@capitol.hawaii.gov
To: [WTLTestimony](#)
Cc: natalie.mckinney@gmail.com
Subject: *Submitted testimony for SB1374 on Feb 13, 2015 15:00PM*
Date: Thursday, February 12, 2015 11:55:30 AM

SB1374

Submitted on: 2/12/2015

Testimony for WTL/PSM/AGL on Feb 13, 2015 15:00PM in Conference Room 224

Submitted By	Organization	Testifier Position	Present at Hearing
Natalie McKinney	Individual	Oppose	No

Comments:

Please note that testimony submitted less than 24 hours prior to the hearing, improperly identified, or directed to the incorrect office, may not be posted online or distributed to the committee prior to the convening of the public hearing.

Do not reply to this email. This inbox is not monitored. For assistance please email webmaster@capitol.hawaii.gov

From: mailinglist@capitol.hawaii.gov
To: [WTLTestimony](#)
Cc: Tiger8980@yahoo.com
Subject: Submitted testimony for SB1374 on Feb 13, 2015 15:00PM
Date: Friday, February 13, 2015 10:52:34 AM

SB1374

Submitted on: 2/13/2015

Testimony for WTL/PSM/AGL on Feb 13, 2015 15:00PM in Conference Room 224

Submitted By	Organization	Testifier Position	Present at Hearing
Paul Hicks	Individual	Oppose	No

Comments: No one seems to be reading this, It seams just a way of back-door a new, and the largest Prison on the island. first you get the funding for the land by State Legislature, and then in the second half of the bill you get the funding for a Large Prison. I think I would rather trust Dole Food Company to sell the land for real agriculture and possible development . Housing and community over a prison. Is this really what North Shore Chamber of Commerce wants in the North Shore. A bill disguised as preserving farm land and reality a "New Prison Bill". Mahalo for your time Paul Hicks

Please note that testimony submitted less than 24 hours prior to the hearing, improperly identified, or directed to the incorrect office, may not be posted online or distributed to the committee prior to the convening of the public hearing.

Do not reply to this email. This inbox is not monitored. For assistance please email webmaster@capitol.hawaii.gov

From: mailinglist@capitol.hawaii.gov
To: [WTLTestimony](#)
Cc: leinaur001@hawaii.rr.com
Subject: Submitted testimony for SB1374 on Feb 13, 2015 15:00PM
Date: Thursday, February 12, 2015 9:37:05 PM

SB1374

Submitted on: 2/12/2015

Testimony for WTL/PSM/AGL on Feb 13, 2015 15:00PM in Conference Room 224

Submitted By	Organization	Testifier Position	Present at Hearing
Roberts Leinau	Individual	Support	No

Comments: We need to protect ag land

Please note that testimony submitted less than 24 hours prior to the hearing, improperly identified, or directed to the incorrect office, may not be posted online or distributed to the committee prior to the convening of the public hearing.

Do not reply to this email. This inbox is not monitored. For assistance please email webmaster@capitol.hawaii.gov

From: mailinglist@capitol.hawaii.gov
To: [WTLTestimony](#)
Cc: lovinitmaui@gmail.com
Subject: *Submitted testimony for SB1374 on Feb 13, 2015 15:00PM*
Date: Wednesday, February 11, 2015 6:09:34 PM

SB1374

Submitted on: 2/11/2015

Testimony for WTL/PSM/AGL on Feb 13, 2015 15:00PM in Conference Room 224

Submitted By	Organization	Testifier Position	Present at Hearing
Robin Hammerquist	Individual	Support	No

Comments:

Please note that testimony submitted less than 24 hours prior to the hearing, improperly identified, or directed to the incorrect office, may not be posted online or distributed to the committee prior to the convening of the public hearing.

Do not reply to this email. This inbox is not monitored. For assistance please email webmaster@capitol.hawaii.gov

From: mailinglist@capitol.hawaii.gov
To: [WTLTestimony](#)
Cc: rkayelny@gmail.com
Subject: *Submitted testimony for SB1374 on Feb 13, 2015 15:00PM*
Date: Wednesday, February 11, 2015 5:40:06 AM

SB1374

Submitted on: 2/11/2015

Testimony for WTL/PSM/AGL on Feb 13, 2015 15:00PM in Conference Room 224

Submitted By	Organization	Testifier Position	Present at Hearing
Robin Kaye	Individual	Oppose	No

Comments:

Please note that testimony submitted less than 24 hours prior to the hearing, improperly identified, or directed to the incorrect office, may not be posted online or distributed to the committee prior to the convening of the public hearing.

Do not reply to this email. This inbox is not monitored. For assistance please email webmaster@capitol.hawaii.gov

From: mailinglist@capitol.hawaii.gov
To: [WTLTestimony](#)
Cc: slwsurfing@yahoo.com
Subject: Submitted testimony for SB1374 on Feb 13, 2015 15:00PM
Date: Tuesday, February 10, 2015 10:40:34 PM

SB1374

Submitted on: 2/10/2015

Testimony for WTL/PSM/AGL on Feb 13, 2015 15:00PM in Conference Room 224

Submitted By	Organization	Testifier Position	Present at Hearing
sharon	Individual	Oppose	No

Comments: It's TRUST LAND ~ FOR THE CHILDREN NOT DEVELOPERS!!!

Please note that testimony submitted less than 24 hours prior to the hearing, improperly identified, or directed to the incorrect office, may not be posted online or distributed to the committee prior to the convening of the public hearing.

Do not reply to this email. This inbox is not monitored. For assistance please email webmaster@capitol.hawaii.gov

From: mailinglist@capitol.hawaii.gov
To: [WTLTestimony](#)
Cc: ssseahorse@msn.com
Subject: Submitted testimony for SB1374 on Feb 13, 2015 15:00PM
Date: Friday, February 13, 2015 8:23:39 AM

SB1374

Submitted on: 2/13/2015

Testimony for WTL/PSM/AGL on Feb 13, 2015 15:00PM in Conference Room 224

Submitted By	Organization	Testifier Position	Present at Hearing
Susan Stone	Individual	Support	No

Comments: I am support of this bill. I am sad to see the current devlopments taking place on Kaukonahu Road between Haleiwa and Wahiawa in particular. Our ag land is a very important resourse that needs to be preserved.

Please note that testimony submitted less than 24 hours prior to the hearing, improperly identified, or directed to the incorrect office, may not be posted online or distributed to the committee prior to the convening of the public hearing.

Do not reply to this email. This inbox is not monitored. For assistance please email webmaster@capitol.hawaii.gov

From: mailinglist@capitol.hawaii.gov
To: [WTLTestimony](#)
Cc: william.kusch@terviva.com
Subject: Submitted testimony for SB1374 on Feb 13, 2015 15:00PM
Date: Thursday, February 12, 2015 9:23:55 PM

SB1374

Submitted on: 2/12/2015

Testimony for WTL/PSM/AGL on Feb 13, 2015 15:00PM in Conference Room 224

Submitted By	Organization	Testifier Position	Present at Hearing
William Kusch	Individual	Support	No

Comments: Aloha, My name is William Kusch, and I work for a small (9 employees) agriculture company. I am writing to submit testimony in support of SB 1374. As an agricultural worker I endeavor to grow crops for renewable energy and food in Hawaii, for Hawaii. SB 1374 would prudently ensure continued access to some of the most fertile land in the state for Hawaiian farmers. By supporting this bill, the legislature of the State of Hawaii can provide critical support to the people working to grow food and energy crops in Hawaii, for use by Hawaiians. Please feel free to contact me if additional information or testimony would be of service. Mahalo, Will

Please note that testimony submitted less than 24 hours prior to the hearing, improperly identified, or directed to the incorrect office, may not be posted online or distributed to the committee prior to the convening of the public hearing.

Do not reply to this email. This inbox is not monitored. For assistance please email webmaster@capitol.hawaii.gov