

House District 28

Senate District 14

THE TWENTY-EIGHTH LEGISLATURE
APPLICATION FOR GRANTS
CHAPTER 42F, HAWAII REVISED STATUTES

Log No: _____

For Legislature's Use Only

Type of Grant Request:

GRANT REQUEST – OPERATING

GRANT REQUEST – CAPITAL

"Grant" means an award of state funds by the legislature, by an appropriation to a specified recipient, to support the activities of the recipient and permit the community to benefit from those activities.

"Recipient" means any organization or person receiving a grant.

STATE DEPARTMENT OR AGENCY RELATED TO THIS REQUEST (LEAVE BLANK IF UNKNOWN): _____

STATE PROGRAM I.D. NO. (LEAVE BLANK IF UNKNOWN): _____

1. APPLICANT INFORMATION:

Legal Name of Requesting Organization or Individual:
Young Men's Christian Association of Honolulu

Dbas: YMCA of Honolulu

Street Address: 1441 Pali Hwy, Honolulu, HI 96813

Mailing Address:
Kalihi YMCA, 1335 Kalihi Street, Honolulu, HI 96819

2. CONTACT PERSON FOR MATTERS INVOLVING THIS APPLICATION:

Name Kyle Ishizaka

Title Executive Director, Kalihi YMCA

Phone # (808) 848-2494

Fax # (808) 842-7736

E-mail kishizaka@ymcahonolulu.org

3. TYPE OF BUSINESS ENTITY:

- NON PROFIT CORPORATION INCORPORATED IN HAWAII
- FOR PROFIT CORPORATION INCORPORATED IN HAWAII
- LIMITED LIABILITY COMPANY
- SOLE PROPRIETORSHIP/INDIVIDUAL
- OTHER

6. DESCRIPTIVE TITLE OF APPLICANT'S REQUEST:

YMCA OF HONOLULU – KALIHI BRANCH
KALIHI-PALAMA SCHOOL'S OUT PROJECT
TEEN AFTER-SCHOOL PROGRAM & SUBSTANCE ABUSE SERVICES TO INCREASE PROTECTIVE FACTORS FOR CHILDREN AND TEENS WHO ARE AT RISK FOR OR INVOLVED IN SUBSTANCE ABUSE, TRUANCY, TEEN PREGNANCY, JUVENILE DELINQUENCY OR ILLEGAL ACTIVITIES.

4. FEDERAL TAX ID #: _____

5. STATE TAX ID #: _____

7. AMOUNT OF STATE FUNDS REQUESTED:

FISCAL YEAR 2017: \$ 200,000.00

8. STATUS OF SERVICE DESCRIBED IN THIS REQUEST:

- NEW SERVICE (PRESENTLY DOES NOT EXIST)
- EXISTING SERVICE (PRESENTLY IN OPERATION)

SPECIFY THE AMOUNT BY SOURCES OF FUNDS AVAILABLE AT THE TIME OF THIS REQUEST:

STATE \$ 200,000.00
 FEDERAL \$ _____
 COUNTY \$ _____
 PRIVATE/OTHER \$ _____

DESIGNATE TITLE OF AUTHORIZED REPRESENTATIVE

MICHAEL F. BRODERICK, PRESIDENT & CEO

NAME & TITLE

JAN 20 2016

DATE SIGNED



Application for Grants

If any item is not applicable to the request, the applicant should enter "not applicable".

I. Background and Summary

This section shall clearly and concisely summarize and highlight the contents of the request in such a way as to provide the State Legislature with a broad understanding of the request. Please include the following:

1. A brief description of the applicant's background;

The YMCA of Honolulu was founded in 1869 and incorporated under the laws of the Kingdom of Hawai'i in 1882. Every year, we serve more than 100,000 individuals in a variety of programs. YMCA programs and services are open to children, teens, women and men of all ages, faiths and backgrounds. In all our programs, we promote our core values of caring, honesty, respect and responsibility. We are a fellowship of people helping each other to learn, grow and improve our own lives as well as the lives of others. Our programs and services center around three areas of focus: Youth Development, Healthy Living and Social Responsibility.

The Kalihi YMCA has been providing programs in Kalihi-Palama and throughout Oahu for 70 years. The YMCA of Honolulu — Kalihi Branch, is located in the heart of West Honolulu serving all neighborhoods in this highly diverse community since 1946.

During that time, the Kalihi YMCA has been an acknowledged leader in the development of effective community-based programs, treatments, and activities for youth at risk for serious behavior problems related to substance abuse, poor school performance and family problems in the Kalihi-Palama district that is targeted in this grant proposal, providing (a) school-based substance abuse prevention and treatment services; and (b) community-based positive youth development programs.

The Kalihi YMCA has extensive experience in providing adolescent school-based substance abuse treatment services in Hawai'i's public schools under contracts with the State of Hawai'i Department of Health, Alcohol and Drug Abuse Division (ADAD). The Kalihi YMCA has been working with ADAD for over 20 years in providing prevention and treatment programs for youths experiencing substance abuse problems.

The Kalihi YMCA has also been recognized in the community for providing positive youth development programs for youth seeking places in their neighborhoods where they can participate in personally rewarding activities while engaging with positive adult role models and other peers with similar interests, all in a safe environment.

2. The goals and objectives related to the request;

For the past two years the Kalihi YMCA has been funded through this Grant in Aid to provide prevention, intervention, and substance abuse aftercare service to teens 12 to 18 years of age. This was accomplished through the Ho'okupa'a School's Out Program and the Kauhale After Care Substance Abuse Treatment Program. In 2016, the Kalihi YMCA would like to enhance its services to teens by implementing the Future Opportunity Program. This program will allow any youth registered in our Ho'okupa;a or Kahale Programs the opportunity to be assessed and identify what their personality traits, strengths, and gifting's are. Through this assessment, youth can gain an understanding of what type of Career or Educational path is best suited to them.

The Ho`okupa`a Teen “School’s Out” Program, the Kauhale Substance Abuse Treatment After-Care Program, and the Future Opportunity Program Goals, Outcomes and Objectives share five key elements:

1. Leadership Development
2. Health and Nutrition Education
3. Community Service
4. Alcohol, Tobacco and Other Drug Education, Prevention and Intervention
5. Future Career Path/Employment Opportunities

The Kalihi YMCA Board of Managers asked staff to create a “school’s out” program to address the concerns raised in the cited research (found in section I. 2. of this proposal). Over the past seven years, Kalihi YMCA staff have developed a number of program components that, taken together, form our Ho`okupa`a School's Out Program and the Kauhale Substance Abuse Treatment After-Care Program.

Ho`okupa`a is an afterschool / “school’s out”, community-based, adult-supervised positive youth development program. This program includes activities, structured classes and Community Service. The components of the Ho`okupa`a Teen Program target middle and high school youth between the hours of 2:30 pm to 7:00 pm Monday through Friday, and 8:30 a.m. to 1:00 p.m. on Saturday. Services and activities are also provided during the school intersessions and summer breaks.

The Kauhale Substance Abuse Treatment After-Care program consists of evidence-based practices for youth discharged from an adolescent substance abuse treatment program and who are referred for after-care. The program includes individual and group sessions that are focused on relapse prevention and allows youth to transition from treatment to after-care to support them to remain clean and sober.

A new enhancement to our services to youth is our Future Opportunity Program. This program assists youth in identifying their personality traits, gifts, and strengths. Once identified, youth can gain an understanding of which Career/Educational path best suits their traits and strengths. By setting a pathway to achieve future educational/career goals, youth will gain hope and motivation to remain clean and sober moving towards adulthood. By

implementing a Career and Higher Education Explorations program, protective factors for adolescents at-risk for problem behaviors are significantly increased.

This has been done to ensure that all Kalihi-Palama teens will have opportunities to:

- Have a safe place to spend their after school hours in adult supervised programs
- Have the opportunity to gain knowledge of a healthy and productive life, and be involved in leadership development and social responsibility
- Receive After-Care & Relapse Prevention Services
- Gain an understanding of career/employment opportunities based on personality and strengths

The quality that the Kalihi YMCA brings to the treatment of substance abuse and socioeconomic challenges among youth is driven by the YMCA's core mission of building healthy spirit, mind, and body for all, with the focus on positive youth development, healthy living, and social responsibility.

The Kalihi YMCA provides school-based substance abuse treatment programs that integrate treatment youth into positive youth development programs with other youth in the community in activities emphasizing healthy living skills, leadership, community service, and adult-supervised recreational activities. We embrace a place-based approach based on the foundation of personal relationships and program experiences earned over decades of partnerships with people working and residing in the communities. This place-based approach recognizes the importance of appreciating ethno-cultural differences, unique social histories, socioeconomic characteristics, multi-ethnic and cultural mixes, and physical environments where the youth reside and attend school.

Thus, the focus of this initiative is to strengthen the programming and coordination around the transition of youth from our substance abuse treatment program to after-care through our school's out programming and on into a career or educational path that emphasizes developing the youth's gifts, strengths, and resiliency.

3. The public purpose and need to be served;

Need of Service

This initiative will be targeted in specified geographic areas of high need. In 2008, approximately 51% of the Kalihi-Palama population were in the low-moderate income. The Kalihi-Palama community also has five (5) Public Housing Projects (Kalihi Valley Homes, Kuhio Park Terrace, Mayor Wright Homes, Kaahumanu, and Kamehameha Homes), as well as subsidized housing sites. As defined by the criteria of the Dept. of Justice, these sites have high instances of gang and drug-related crime, high unemployment and number of persons under correctional supervision, public housing development, truancy, limited economic activity, and lack of organized groups.

The Hawaii Student Alcohol, Tobacco, and Other Drug Use Study: 2007-2008 Comprehensive Report and the Alcohol and Drug Treatment Services Report: Hawaii, 10-Year Trends (2003 – 2012) published by ADAD indicate that the City and County of

Honolulu experienced an increase of 9.7% of adolescents admitted into ADAD substance abuse treatment programs between 2008 and 2012. In 2012, approximately 4,511 adolescents in grades 6-12 attending public schools in the C&C of Honolulu required substance abuse treatment, but only 1,419 (31.4%) were admitted to ADAD treatment programs. Of the adolescents admitted into treatment, only 32.7% completed the treatment program with no drug use. The remaining 67.3% either completed the program with some drug use (19.4%), or left before completing the program (26.3%), or were discharged for non-compliance with rules (7.9%), or were transferred to another program or incarcerated (13.4%).

Nationally, the unemployment rate of workers age 16-19 years is 20.7%, with young Blacks and other ethnic minorities experiencing a disproportionate 38% unemployment rate. The main reason is that many ethnic minorities graduate at lower rates at every educational level.

Research studies have shown that youth who do not participate in after school activities and are left unsupervised from 3:00 p.m. to 7:00 p.m. are significantly more likely to drink alcohol, smoke, use drugs, get into trouble, engage in sex, get into fights, and skip school. Nationally, teens not supervised after school are six times more likely to be "D" students than those who participate in supervised activities. Among youth in middle school (6th through 8th grade), 54% report low community opportunities for positive involvement; 41% report exposure to ATOD use in the community; 50% in the family, and 33% among their peers. Among middle school youth, nearly 42% of the students report low school commitment while half (50%) indicates poor academic performance. Youths who reach high school with serious educational deficiencies have high dropout rates and are more likely than the general population to turn to crime.

Without appropriate after-care programs, the youth is at risk for regressing from treatment gains and more vulnerable to relapsing. Achievement of both (a) the maintenance of a substance free life; and (b) the development and strengthening of personal and social assets are essential for youth to achieve recovery and to transition successfully from adolescence to emerging adulthood. Unfortunately, there is a dearth of after-care programs for adolescents discharged from treatment programs in Hawaii.

The YMCA of Honolulu – Kalihi Branch proposed grant activity addresses three significant needs for youth in Hawaii: (a) effective adolescent substance abuse treatment services including follow-up aftercare programs that are located in the communities and schools where students live; (b) positive youth development activities provided after school and on weekends in communities where youth live that are easily accessible and available at times outside of the school day and on weekends when youth may be more vulnerable to risky behaviors and unhealthy situations, particularly in neighborhoods where resources and supervised activities that support health and wellness for developing adolescents are not readily available; and c) assist youth to discover a career or educational path based on their personality, strength, talents, and gifting.

When these activities are coordinated as proposed in this project, they provide community-based resources that are difficult to develop and rarely provided:

- Substance abuse aftercare programs for youth in which youth discharged from their treatment program can receive follow-up services as part of their discharge plan that are appropriately adult-supervised.
- All services and activities provided in the context of positive youth development activities that include youth from the community, many of whom serve as positive role models and as social networks for supporting the integration of youth from treatment programs back to positive community involvement.
- Inspiring hope to all youth served that their future can be meaningful and productive.

This Grant in Aid will allow the Kalihi YMCA to staff 3.0 full-time positions to provide the Kalihi-Palama School's Out Project to a total of 200 teens. This will also allow a continuum of services to adolescents transitioning from our substance abuse treatment program to after-care through our school's out programming and on into a career or educational path that emphasizes developing the youth's gifts, strengths, and resiliency

The program proposed through this GIA is unique in the state of Hawaii. According to the:

- FY14 Grant In Aid Fund of the Honolulu City Council" dated July 31, 2013;
- The Department of Health's Alcohol and Drug Abuse Division's list of Treatment Programs from 2010-2013;
- And the SAMHSA National Directory of Drug and Alcohol Abuse Treatment Programs 2012, there is no current funding for substance abuse after-care services for adolescents.

By submitting this proposal, the Kalihi YMCA hopes to receive the support that is needed to enhance and sustain the Kauhale After-Care and Relapse Prevention services for adolescents and to increase protective factors for at-risk youth through the Kalihi-Palama School's Out Project.

4. Describe the target population to be served; and

The target population includes a total of 200 middle and high school-aged adolescents participating in the Kalihi-Palama School's Out Project consisting of the integrated Ho`okupa`a Teen School's Out Program, a positive youth development program, the Kauhale Substance Abuse Treatment AfterCare Program, and the Future Opportunity Program.

The Kalihi YMCA will provide the Ho`okupa`a Teen School's Out Program, Kauhale After-Care Substance Abuse Treatment Program, and the Future Opportunity Program serving 150, 50, and 50 youth respectively, for this grant.

5. Describe the geographic coverage.

The integrated Ho`okupa`a School's Out and Kauhale After-Care programs will be enhanced by the Future Opportunity Program and will serve youth that attend schools, live in or hang out in the geographic areas of Kalihi-Palama, Moanalua and Aiea Community Districts of O`ahu.

In addition, the Kalihi YMCA will offer the After-Care program for youth discharged from its school-based substance abuse treatment programs at Central, Stevenson, Kawanakoa, Kalakaua, Dole, Aiea and Moanalua Middle Schools; and from Roosevelt, Farrington, Aiea and Moanalua High Schools.

II. Service Summary and Outcomes

The Service Summary shall include a detailed discussion of the applicant's approach to the request. The applicant shall clearly and concisely specify the results, outcomes, and measures of effectiveness from this request. The applicant shall:

1. Describe the scope of work, tasks and responsibilities;

The Ho`okupa`a School's Out Program and the Kauhale After-Care Program provides opportunities for youth who otherwise may not be able to participate in positive youth development services based in their own communities. This project also fills the unmet community need for evidence-based after-care programs that target youth that are discharged from adolescent substance abuse treatment and are requiring activities that build on their recovery from substance use while preventing relapse. A new enhancement to this year's funding is the Future Opportunity Program targeting youth who are at risk for disconnection from employment and educational opportunities at a critical time in their development—adolescents transitioning to early adulthood. They have reached this key stage facing substantial barriers: poor of financial resources, insufficient education, and no work experience. They also lack community-based resources to reconnect them back on track to school, jobs, or advancing to higher education and future careers.

Through the Myers-Briggs Personality Test and the Beloved Communities Mapping of Strengths and Gifts, youth will learn their personality traits, gifts, talents, and passions so they can identify what career/educational path is best suited for them.

These outcomes are directly measurable through quantitative methods and align with GIA objectives as participants are adolescents attending middle and high schools, and many are experiencing substance use. Youth registered in the Ho`okupa`a School's Out or Kauhale After Care Programs can access the Future Opportunity Program.

The Kalihi YMCA will provide a "school's out" Ho`okupa`a Teen Program to middle and high school students in targeted areas. The program operates between 2:30 and 7:00 pm Monday through Friday, and 8:30 a.m. to 1:00 p.m. on Saturday at the Kalihi YMCA. Services are also provided during the school intersessions and summer vacation.

The Kauhale After-Care Program is integrated with the Ho`okupa`a Program. This Kauhale After-Care Program incorporates practice-based evidence developed by the Kalihi YMCA staff for youth who have been successfully discharged from the Kalihi YMCA School-Based Substance Abuse Treatment Program and are being referred for follow-up after-care based on a discharge plan mutually developed with the treatment counselor. Youths participating in the Kauhale After-Care Program will also participate in the Ho`okupa`a Program.

Youth in the Kauhale After-Care Program will have many opportunities to participate in activities with other youth from the community, interacting with peers who may represent positive role models and support systems or networks for youth discharged from the treatment program and reintegrating back into the community.

- All teens in service communities of Kalihi-Palama, Aiea and Moanalua will have a safe place to spend their after school hours in adult supervised programs.
- All teens will have the opportunity to gain knowledge of a healthy and productive life.
- All teens will be exposed to activities geared towards leadership development and social responsibility.
- All teens will have access to the Future Opportunity Program

Ho`okupa`a Teen Program - Scope of Services

Our current offerings under the Ho`okupa`a Teen Program includes:

- Healthy Together Teen Wellness Program
- Summer Strive Program
- After School Drop-In
 - Study Hall/Computer Lab
 - Kajukenbo
 - Teen Lounge
- Teen Intersession Programs
- Youth in Government
- Hiroshima Exchange Program
- Youth Council

Summer STRIVE Program:

The YMCA of Honolulu-Kalihi Branch's STRIVE Teen Leadership Program combines the YMCA's "Healthy Together" Curriculum with The YMCA Teen Leadership Curriculum. This program will provide leadership opportunities and fun events such as excursions, outings, and functions with teens from other YMCA branches. The "Healthy Together" mini-workshops such as "Staying Active", and "Healthy Food Choices" will integrate hands-on, real life experiences in fitness, cooking, health and wellness goal-setting and planning.

Ho`okupa`a Teen After-School Program:

The following “Drop-In Activities” will be held at the YMCA of Honolulu-Kalihi Branch. These activities will take place throughout the week and are available to all teens to attend and participate in.

Teen Lounge:

The Teen Lounge is a safe and supervised place where youth can socialize and meet other peers from the community. This serves as a place for youth to come in casually, build relationships with other teens and adult-staff, learn about the services the Kalihi YMCA provides, and possibly get involved in more structured, committed programming. The Teen Lounge has a pool table, ping-pong table, and a state-of-the-art entertainment center for the youth to utilize. The lounge will be open Monday through Friday from 3:00 pm to 5:30 pm, and on Wednesdays from 2:00 pm to 5:30 pm. The Teen Lounge will be closed for “drop in” during times of structured programming (i.e., intersession, summer, and school holidays/breaks).

Study Hall:

Study Hall will take place from 2:30 pm to 3:30 pm, Monday through Friday when school is in session. Study Hall will be a time for youth to receive assistance with schoolwork, homework, school projects, or studying for a test. Study hall is a time in which participants will be able to study in a quiet environment to focus on his or her school responsibilities.

Kajukenbo:

Kajukenbo will be offered for youth participants. Instructor Matt Levi encourages youth to develop self-discipline and stresses the importance of having a positive attitude through the learning and mastering of the martial arts technique of Kajukenbo.

Teen Intersession Programs

The YMCA of Honolulu-Kalihi Branch runs three components of their Teen Intersession Program. Each component will focus on a theme and will be held in the Spring (March), Fall (October), and Winter (December to January). These Intersession programs will take place Monday through Friday, from 8:00 am to 4:00 pm. The programs will include:

- Health and Wellness Education and Activities
 - Healthy Cooking
 - Weight and Cardio Room
 - Hikes
- Urban Art/Arts and Crafts
- Skill-Building Activities
- Cultural Activities
- Community Service

YMCA of Honolulu Youth and Government (YAG) Program:

The Youth and Government Program (YAG) is a year-long mock legislature program separated into three (3) separate units. The three units are:

- YAG – Elections Convention 2015: During this unit the youth legislators elect their leadership. Offices include Youth Governor and Presiding Officers.
- YAG - State Session: During this unit the youth legislators' propone, debate, and vote on bills and resolutions they have written. Included is an Opening Session and a Governor's Banquet.
- YAG - Civic Leadership Conference: CLC is a two day conference where participants discuss and debate topics and issues that affect them and come up with solutions to these issues in the form of creating bills and resolutions.

The Hiroshima Exchange Program:

The Hiroshima Exchange program is the longest running international YMCA exchange program. For 52 years, the YMCA of Honolulu and the Hiroshima YMCA have alternated yearly by sending a group of youth to experience the culture, education, and social activities that youth in the host country has to offer. Youth also participate in peace, harmony and goodwill discussions; while reflecting on the dropping of the atomic bomb in Hiroshima and the attack on Pearl Harbor in Hawaii during World War II.

Kauhale After-Care Substance Abuse Prevention and Intervention:

Teens in Kalihi-Palama are at high-risk for use of alcohol, tobacco, and other drugs. In order to address this, we have added a substance abuse prevention and intervention component to Ho`okupa`a.

The Kalihi YMCA fully utilizes the best practices from research on treating youth with substance abuse problems, as well as incorporates programs and practices we have developed and tested over an extended period of time in working with youth from dysfunctional families, challenging neighborhoods, and often from marginalized situations including poverty, academic difficulties, and communities lacking important resources for developing healthy children and families.

Youth that participate in this component will gain an understanding of the negative effects and consequences of alcohol, tobacco, and other drug use. Through weekly classes and group sessions focused on the Kalihi YMCA's Alcohol and Drug Curriculum, the Seven Challenges Curriculum, the YMCA of the USA's 40 Developmental Assets Survey, the Risk and Protective Factors Model, the "Beloved Community" Group Sessions, and through various skill-building activities, teens will gain the knowledge and skills needed to live an alcohol, tobacco, and drug free life.

**HO`OKUPA`A & KAUAHALE
PROGRAM OUTCOMES AND MEASURES OF EFFECTIVENESS**

Program	Program/Activity	Outcome Objective & Measures
<p>All teens in the Kalihi-Palama, Moanalua and Aiea community <u>will have a safe and encouraging environment supervised by positive adult role models</u>, to foster and support youth development, healthy living, and social responsibility.</p>	<p><i>Join a Supervised Club, Class, or Program facilitated by the Kalihi YMCA.</i></p> <ul style="list-style-type: none"> • Ho`okupa`a Teen After School/School's Out Program • Ho`okupa`a Teen Intersession Program • Summer STRIVE Program • Beloved Community – Group Sessions • Healthy Together Curriculum • Kauhale Substance Abuse Education / & After-Care Relapse Prevention • Teen Drop In Center Activities • Arts and Crafts • Kajukenbo Class • Late Night Basketball • Youth and Government / Hiroshima Program • Future Opportunities Program 	<p>Objective: 200 youth will register for and participate in Ho`okupa`a Teen School's Out (150 youth) or Kauhale After-Care (50 youth) Programs and are supervised by positive adult role models.</p> <p>Outcome: 150 youth (75%) will participate in and complete a structured class, club, or program.</p> <p>Measured By: Registration Forms & Attendance Logs</p>
<p>All teen health seekers in the Kalihi-Palama, Moanalua and Aiea community will have opportunities to <u>gain knowledge of health and wellness and implement skills learned in their daily lives.</u></p>	<p><i>Participation in Teen Health & Wellness Activities:</i></p> <ul style="list-style-type: none"> • Education in proper preparation and use of Cardio and Fitness Equipment. • Access to Kalihi YMCA Fitness Classes and Resources. (Group Exercise, Health and Nutrition Education, Kajukenbo, Yoga, Pilates classes.) • Sports & Fitness activities (Participation in Odyssey or Alpine Tower Challenge Course and Low Ropes Team-Building at Camp Erdman, Basketball,) • Education on Nutrition, Food preparation, and Healthy Living: Helpful tips on label reading/choosing healthy snacks. • Students will learn how to better manage issues regarding their self-image (i.e., effects the media has on self-image of young people). • Students will be challenged to be active and define ways to confront issues that could hinder them from healthy behaviors (i.e., peer pressure, stress management). 	<p>Objective: 150 (80%) Ho`okupa`a or Kauhale youth health seekers will participate in educational activities and curriculum of the <u>“Healthy Together” program component.</u></p> <p>Outcome: 80% of the 150 youth (120 youth) will be able to prepare two (2) healthy recipe dishes learned and participate in two (2) fitness activities while enrolled in program.</p> <p>Measured By: Data collected from “Healthy Together” course evaluation, attendance logs, and survey completed by youth participants.</p>

Program Goals	Program/Activity	Outcome Objective & Measures
<p>All teens in the Kalihi-Palama, Moanalua and Aiea community will be involved in activities that <u>develop leadership skills and promote social responsibility.</u></p>	<p><i>Participate in 1) Teen Leadership and Character Development Training. 2) Volunteerism and Community Service:</i></p> <p><i>1) Character Development and Leadership Training. Participation in at least one (1) of the following:</i></p> <ul style="list-style-type: none"> • YMCA Hiroshima Exchange-program where youth develop relationships and share cultural experiences with other teens from Hiroshima. • Be involved in Teen Leadership by planning special interest activities/events (i.e., Career/College Exploration, Dances/Socials, Cultural Activities, arranging for guest Speakers and Presentations.) • Be part of a focus group to identify needs of the community or problem solve issues or concerns. • Participation in the Kalihi YMCA Board of Manager’s Program Committee to share experiences and provide input for development of YMCA Teen Programs. • Youth and Government (YAG); serve as an elected officer (i.e., Youth Governor, Youth Chief in Editor, Speaker of the House, Youth Chaplin). Participate in drafting/co-drafting a bill or resolution <p><i>2) Volunteerism and Community Service. Participants will give back to the community through participation in volunteer/community service projects:</i></p> <ul style="list-style-type: none"> • Volunteering for Community Service Projects (beach / stream clean-ups, graffiti paint-outs, cultural activities or events) • Volunteering at the YMCA Summer Family Fair, YMCA Child Care activities, and Healthy Kids Day. 	<p>Objective: 150 (80%) Ho`okupa`a or Kauhale youth will participate in activities that develop leadership skills.</p> <p>Outcomes: 1) 15 (10%) youth will participate in at least one (1) Teen Leadership and Character Development Training 2) 75 youth (50%) will participate in two (2) Community Service Projects.</p> <p>Measured By: Attendance Logs and survey completed by youth participants</p>

Program	Program/Activity	Outcome, Objective & Measures
<p>At risk teens in the Kalihi-Palama, Moanalua and Aiea community will have the opportunity to gain knowledge of the negative health effects from alcohol, tobacco and other drug use as well as being able to identify what their protective/risk factors are.</p>	<p>KAUHALE AFTER-CARE PROGRAM: Alcohol, Tobacco and Other Drug Education, Prevention & Intervention services:</p> <p>Increase Protective Factors & Minimize Risk Factors</p> <ul style="list-style-type: none"> • Alcohol, Tobacco and Other Drug (ATOD) free environment during the after school hours of 2:00pm – 7:00pm • Weekly ATOD education classes and group sessions. • Beloved Community Curriculum and Group Sessions • YMCA of USA’s 40 Assets Assessment Survey and Service Plans (<i>Intervention Services</i>) • Healthy Cooking classes • Healthy Fitness classes and groups • Community Service and Volunteer Opportunities. • Peer Mediation and Tutoring 	<p>Objective: 50 Middle / High School youth (25% of 200 Target Group) who have been clinically discharged from a substance abuse treatment program will participate in the Kauhale After-Care Program.</p> <p>Outcomes: 1) 80% (40 youth) will participate in 12-week continuum of substance abuse services, 1-2 times per week (12-18 sessions). 2) 80% (40 youth) will learn relapse prevention skills and create a discharge plan. 3) 70% (35 youth) will not resume or increase their alcohol/drug use while in the after-care program.</p> <p>Measured by: Kauhale After-Care Program Registrations, Attendance Logs, Relapse Prevention Plan and quality assurance survey completed by youth participants</p>
Program	Program/Activity	Outcome, Objective & Measures
<p>All teens in the Kalihi-Palama, Moanalua and Aiea community will have opportunities to identify Career/College Opportunities and learn their personality traits, gifts, talents, and passions so they can identify what career/educational path is best suited for them.</p>	<p>Participate in Future Opportunities and Exploration Program:</p> <ul style="list-style-type: none"> • Complete the Myers-Briggs Type Indicator (MBTI) • Attend college campus tour or guest speaker presentation • Identify gifts, talents, and passions to identify career/educational path 	<p>Objective: 50 Ho`okupa`a or Kauhale youth (25% of 200 Target Group) will register in the Future Opportunities and Exploration Program.</p> <p>Outcomes: 1) 80% (40 youth) will complete the Myers-Briggs Type Indicator (MBTI) 2) 80% (40 youth) will participate with at least one (1) Exploration Opportunity activity.</p> <p>Measured by: Future Opportunities and Exploration Program Registrations, Attendance Logs, Plan and survey completed by youth participants</p>

2. Provide a projected annual timeline for accomplishing the results or outcomes of the service;

Program Activities	July	Aug	Sep	Oct	Nov	Dec	Jan	Feb	Mar	Apr	May	Jun
Hire New Staff	X											
Orientation	X											
Delivery of Program Services												
Receive Referrals		X	X	X	X	X	X	X	X	X	X	X
Contact & Register Clients		X	X	X	X	X	X	X	X	X	X	X
Provide Service Based On Assessments		X	X	X	X	X	X	X	X	X	X	X
Initiate Activities & enroll Participants		X	X	X	X	X	X	X	X	X	X	X
Program Operations												
On Going Staff Supervision	X	X	X	X	X	X	X	X	X	X	X	X
Staff Meetings	X	X	X	X	X	X	X	X	X	X	X	X
Collaboration Team Meetings		X	X	X	X	X	X	X	X	X	X	X
Staff Development												
On Going Staff Training	X	X	X	X	X	X	X	X	X	X	X	X
Profession Development Plan		X	X									
Performance Appraisal												X
Quality Improvement												
Team Meetings		X	X	X	X	X	X	X	X	X	X	X
Team Reports			X			X			X			X
Kalihi YMCA QA Meetings			X			X			X			X
Program Reports												
Monthly Summaries	X	X	X	X	X	X	X	X	X	X	X	X
Quarterly Reports			X			X			X			X
Year End Report												X

3. Describe its quality assurance and evaluation plans for the request. Specify how the applicant plans to monitor, evaluate, and improve their results; and

Quality Assurance and Evaluation:

The goal of the Kalihi YMCA's Ho`okupa`a and Kauhale afterschool teen program is to be a safe place for teens to spend their non-school hours. The Kalihi YMCA will monitor this program by conducting quality assurance and program evaluation through multiple methods. In order to ensure the quality of its programs, the Kalihi YMCA will collect and evaluate information at critical points in the service delivery system to evaluate the fidelity of implementation of the program. Through this process, program administrators and staff are able to respond quickly and make the necessary improvements in its service delivery. An outcome assessment will be conducted on each youth participating in this prevention project.

Process Evaluation

For each youth participating in the Kalihi YMCA's Ho`okupa`a, Kauhale, and Future Opportunity program, information is gathered about the number of activities and programs each youth has participated in and the specific services delivered to them. The number of youth dropping in to the Kalihi YMCA's Teen Center verses those that complete a program(s) or a set number of activities will be tracked. In addition, on-going progress of each youth assessed and identified as needing intervention services for alcohol, tobacco, or other drugs will be monitored. Substance abuse services will be given to youth who have been identified as using alcohol, tobacco, or drugs once in their life or at experimental use of these substances.

The Kalihi YMCA will provide alcohol and drug information, tobacco cessation activities, and when appropriate referral/linkages with other social agencies, and consultation services to these youth. Youth receiving substance abuse relapse prevention or intervention services will participate in the YMCA of USA's "40 Assets Assessment Survey" and will have a service plan. The demographic characteristics of participating youth are also examined and reported. The program will also maintain a complete record on each youth of outputs and outcomes. These records contain information on the number of hours of individual and group counseling provided, number of youths making progress on the service plan, number of youths who show improvement in the development of life skills, and the number of youths completing the program who remain free of substance use.

Tools used for data collection for those youth receiving services will include registration forms; attendance/direct service logs, youth's service plan and quality assurance surveys. The information obtained is based on self-reports by the youth, and on discussions between the staff and the youth. Staff may also contact school personnel, parents, probation officers and any other individuals who may provide information on the progress of the youth.

The use of the Myers-Briggs Personality Test and aspects of the Beloved Communities Mapping of Strengths and Gifts will be used to assess youth's personality traits, gifts, and strengths. These assessment tool and activities will be kept in individual files for each youth. Youth's files will be signed off by a youth worker and reviewed by a supervisor.

Quality Assurance through Supervision

The supervision structure is a key element in assuring quality services. Through regular supervision, the program is able to monitor the quality of the direct services offered to the youth in two ways: a) observation and feedback; and b) individual review of staff working with youth, staffs facilitation of group activities and discussions. Supervisors routinely observe group sessions and interactions between youth and staff and provide feedback to staff on the services delivered. Periodically, supervisors will contact youth, parents, and family members to check on the level of service being provided and whether the youth or family is satisfied with the service being delivered. Registration forms, attendance logs, direct service logs, progress notes, and other surveys and tools utilized by staff to gather information and document progress of youth are also reviewed and evaluated regularly by supervisors. This provides immediate information on how youth are being served and helps the staff to stay current on their documentation, tracking, and monitoring of youth.

Programs are evaluated in a Board subcommittee, the Program Committee. The evaluation is then taken to the full Board of Managers of the Kalihi YMCA once a month where program performance is discussed. Board members may then inquire, make recommendations, and/or provide feedback to the program staff.

4. List the measure(s) of effectiveness that will be reported to the State agency through which grant funds are appropriated (the expending agency). The measure(s) will provide a standard and objective way for the State to assess the program's achievement or accomplishment. Please note that if the level of appropriation differs from the amount included in this application that the measure(s) of effectiveness will need to be updated and transmitted to the expending agency.

Program Objectives	Measures Of Effectiveness
<p>Objective: 200 youth will register for and participate in Ho`okupa`a Teen Schools Out or Kauhale After-Care Program and are supervised by positive adult role models.</p>	<p>Outcomes: 80% (160 youth) will participate and complete a structured class, club, or program.</p> <p>Measured By: Registration Forms & Attendance Logs</p>
<p>Objective: 160 Ho`okupa`a or Kauhale youth health seekers will participate in the educational activities and curriculum of the <u>“Healthy Together” program component.</u></p>	<p>Outcomes: 80% of the 160 youth (128 youth) will be able to prepare two (2) healthy recipe dishes learned from the curriculum and participate in two (2) fitness activities while enrolled in program.</p> <p>Measured By: Data collected from “Healthy Together” course evaluation and survey completed by youth participants.</p>
<p>Objective: 160 Ho`okupa`a or Kauhale youth will participate in the educational activities and Curriculum of “Leadership Development 101”.</p>	<p>Outcomes: 50% (80 youth) will participate in three (3) Community Service Projects. 20 youth will participate in the Kalihi YMCA Teen Council.</p> <p>Measured By: Attendance Logs and Teen Council/Committee Meeting Minutes.</p>
<p>Objective: 50 Kalihi-Palama Middle/High School Youth who have been clinically discharged from a substance abuse treatment program will participate in the Kauhale After-Care Program.</p>	<p>Outcomes: 80% (40 youth) will participate in 12-week continuum of substance abuse services, 1-2 times per week (12-18 sessions).</p> <p>Outcomes: 80% (40 youth) will learn relapse prevention skills and create a discharge plan.</p> <p>Outcomes: 70% (35 youth) will not resume or increase their alcohol/drug use while in the after-care program.</p> <p>Measured by: Kauhale After-Care Program Registrations, Attendance Logs, 40 Assets Assessment Survey, Relapse Prevention Plan and quality assurance survey completed by youth participants.</p>
<p>Objective: 50 Ho`okupa`a or Kauhale youth will register in the Future Opportunities and Exploration Program</p>	<p>Outcomes: 80% (40 youth) will complete the Myers-Briggs Indicator (MBTI)</p> <p>Outcomes: 80% (40 youth) will participate with at least on (1) Exploration Opportunity Activity</p> <p>Measured by: Future Opportunities and Exploration Program Registrations, Attendance Logs, Plan and Survey completed by participants</p>

III. Financial

Budget

1. **The applicant shall submit a budget utilizing the enclosed budget forms as applicable, to detail the cost of the request.**

Please see Grants-In-Aid Fiscal Year 2017 – “Attachment I. – Budget”.

The following Cost Proposal budget forms and financial-related Work Plan forms are submitted with the Grants-In-Aid Proposal Application:

- Budget Request By Source Of Funds – Page 5
- Budget Justification – Personnel – Salaries And Wages – Page 6
- Budget Justification – Equipment And Motor Vehicles – Page 7
- Budget Justification – Capital Project Details – Page 8

2. **The applicant shall provide its anticipated quarterly funding requests for the fiscal year 2017.**

Quarter 1	Quarter 2	Quarter 3	Quarter 4	Total Grant
\$40,000.00	\$50,000.00	\$55,000.00	\$55,000.00	\$200,000.00

3. **The applicant shall provide a listing of all other sources of funding that they are seeking for fiscal year 2017.**

Friends of Hawaii Charities – Sony Open - \$18,000.00

4. **The applicant shall provide a listing of all state and federal tax credits it has been granted within the prior three years. Additionally, the applicant shall provide a listing of all state and federal tax credits they have applied for or anticipate applying for pertaining to any capital project, if applicable.**

Not applicable.

5. **The applicant shall provide a listing of all government contracts and grants it has been and will be receiving for program funding.**

The following report listing all YMCA of Honolulu – Kalihi Branch government contracts and / or grants for Fiscal Year 2016-2017 is submitted with the Grant Application:

- Government Contracts And / Or Grants – Page 9

6. **The applicant shall provide the balance of its unrestricted current assets as of December 31, 2015.**

\$3,779.00

IV. Experience and Capability

A. Necessary Skills and Experience

The applicant shall demonstrate that it has the necessary skills, abilities, knowledge of, and experience relating to the request. State your experience and appropriateness for providing the service proposed in this application. The applicant shall also provide a listing of verifiable experience of related projects or contracts for the most recent three years that are pertinent to the request.

The Kalihi YMCA is a Branch of the YMCA of Honolulu and has been providing programs in the community for more than 67 years. During that time, the Kalihi YMCA has been an acknowledged leader in the development of programs for children and for teens at risk for serious behavior problems related to substance abuse, poor school performance and family problems. We have been able to do this by working collaboratively with schools, other human service agencies, public housing tenant associations, the Honolulu Police Department, business associations, and other groups throughout Oahu.

What follows is an overview of some of our key programs:

- In 1962, the Kalihi YMCA set up the first program to address a growing youth gang problem in the Kalihi-Palama community. By the mid-seventies, the counseling programs at the Kalihi YMCA focused primarily on services to youth with substance abuse, family, school, and legal problems.
- For more than twenty-five years, the Kalihi YMCA has provided adolescent substance abuse treatment and outreach counseling programs for schools throughout the island. Currently, the Kalihi YMCA provides substance abuse treatment services for 11 High Schools and 11 Middle/Intermediate Schools on Oahu through a contract with the Hawai'i Department of Health, Alcohol and Drug Abuse Division. The Kalihi YMCA also provides related substance abuse treatment services through contracts with Family Court and Juvenile Drug Court. Through a contract with Family Court, the Kalihi YMCA provides treatment services to adjudicated youth who are court-ordered to receive substance abuse counseling. The State of Hawai'i Office of Youth Services (OYS) contracts services from the Kalihi YMCA to provide counseling for youth who may be experiencing the consequences of school failure or truancy, family, legal, or delinquency problems.
- Kalihi YMCA staff runs 5 A+ after school programs for more than 600 elementary school students each day during the school year.
- More than 700 adults exercise regularly in our Branch's fitness facility.

Over the past six years, Kalihi Y staff have developed a number of program components that, taken together, form our Ho`okupa`a Teen Program. The components of the Ho`okupa`a Teen Program target middle and high school youth between the hours of 2:30 pm to 7:00 pm Monday through Friday, and 8:30 a.m. to 1:00 p.m. on Saturday. Services and activities are also provided during the school intersessions and summer breaks.

In addition, the Ho`okupa`a program will have the Kauhale After Care program added as a component in 2014. The strengths of the Kauhale Program are grounded in the knowledge, skills, and long-term experience of the Kalihi YMCA in the delivery of effective substance abuse treatment programs for youth in schools and across diverse communities.

The following is a summary of projects/contracts of verifiable experience pertinent to the proposed services of this grant-in-aid proposal that have been awarded to the YMCA of Honolulu within the most recent 5 years:

Title of project/contract:

Juvenile Drug Court Outpatient Substance Abuse Treatment Program (J16272)

Point of contact: Joel A. Tamayo, Section Administrator

Juvenile Drug Court, 1st Circuit Court

777 Punchbowl Street, 2nd Floor

Honolulu, Hawaii 96813

Phone number: (808) 534-6588

Title of project/contract:

Outpatient Substance Abuse Treatment Services to Juveniles Referred by Family Court (J16268)

Point of contact: Ramona Yano, Program Specialist

Address: Office of the Deputy Chief Court Administrator

First Judicial Circuit

4675 Kapolei Parkway

Kapolei, Hawaii 96707

Phone Number: (808) 954-8226

Title of project/contract: YMCA of Honolulu – Kalihi Branch “Ho`opiko” Positive Youth Development Program (CT-DCS-1600031)

Point of contact: James Lota, Project Officer

Juvenile Drug Court, 1st Circuit Court

Department of Community Services

715 South King Street, Suite 311

Honolulu, Hawaii 96813

Email: jlota@honolulu.gov

Title of project/contract:

Kalihi-Palama School’s Out Project (OCS-GIA-15-06)

Point of contact: Ben Cabreros

Address: Office of Community Services

830 Punchbowl St., Rm 420

Honolulu, HI 96813

Email: benjamin.c.cabreros@hawaii.gov

Title of project/contract:

Adolescent School-Based Substance Abuse Treatment Services (currently 11 Middle & 12 High Schools) / ASO No. 14-073

Point of contact: Terri A. Nakano, Program Specialist

Address: Alcohol and Drug Abuse Division

601 Kamokila Blvd., Rm 360

Kapolei, HI 96707

Phone number: (808) 692-7511

B. Facilities

The applicant shall provide a description of its facilities and demonstrate its adequacy in relation to the request. If facilities are not presently available, describe plans to secure facilities.

The applicant shall provide a description of its facilities and demonstrate its adequacy in relation to the request. If facilities are not presently available, describe plans to secure facilities. The applicant shall also describe how the facilities meet ADA requirements, as applicable.

The YMCA of Honolulu – Kalihi Branch is located at 1335 Kalihi Street. The facility has computer resources, a recreation room, large and small work and meeting rooms for youth clubs and organizations, a work-out facility with state-of-the-art exercise equipment, office space for staff, large kitchen for group activities, and an out-door basketball court.

The youth services provided by the Kalihi YMCA also take place in the community. Agreements have been made with schools throughout Oahu to provide space that will allow youth to access referral, counseling and group activities with our Treatment Counselors. Treatment Counselors must know the community well and where youths tend to congregate. The Treatment Counselor must use his/her knowledge of the community in order to make opportunities available to youths to participate in recreational and educational activities at other YMCAs on Oahu, and to utilize facilities and programs at other social agencies, organizations, and programs that work with children and adolescents.

The Kalihi YMCA also works as a virtual Youth Service Center. It provides teens with conference rooms to hold meetings, recreational areas for youths to gather, to talk story and hang out, homework and tutorial time, and outdoor areas for sports and play. Camp Erdman, situated on the North Shore of Oahu, is another YMCA site that is utilized for youth activities because of its excellent ropes course utilized in Positive Alternative Activities for program youths. All sites meet ADA requirements.

The YMCA also utilizes the larger community as an extension of our Afterschool and School's Out Teen Program. We have been able to use facilities connected with the State, City and County and other community organizations to support youth activities. When appropriate, businesses may also be used as "centers," particularly those businesses who engage in job training or employment of youth in our programs.

V. Personnel: Project Organization and Staffing

A. Proposed Staffing, Staff Qualifications, Supervision and Training

The applicant shall describe the proposed staffing pattern and proposed service capacity appropriate for the viability of the request. The applicant shall provide the qualifications and experience of personnel for the request and shall describe its ability to supervise, train and provide administrative direction relative to the request.

The Kalihi YMCA will have the following staffing structure: One 0.50 FTE Field Supervisor (FS), One 0.50 FTE Associate Teen Program Director (ATPD) and Two 2.00 FTE Youth Workers (YW). The FS's role is critical to the operation of the Y's community-based program: FS verifies that services are being properly provided by the YW's stipulated on the contract; the ATPD also serves as the link between Kalihi YMCA Administration and school staff, parents and members of the community; FS and ATPD will fill in and provide direct services when YW are sick, on vacation, or the position is temporarily vacant.

Field Supervision

A key to the success of our program is ensuring that regular contact between a PA and a YW takes place in the community. This is accomplished through the following activities:

- The FS supports the YW to develop relationships in the school with administrators, teachers and other employees.
- The FS provides a minimum of one hour of supervision for every seven hours of direct service provided by the YW. This supervision includes:
 - Demonstrating with a client and having the counselor observing how the core functions of a substance abuse counselor are accomplished;
 - Observing the counselor in session with a client performing the core functions;
 - Providing feedback to the YW about contact with teens.
 - Through discussions with school personnel, client, and other individuals, the FS verifies the quality and quantity of services being provided by the YW
 - The FS provides hands-on training in group work with the PA in community settings.
 - The FS regularly reviews each YW's performance by the YW as she interacts with teens in the community and at the Branch.

B. Organization Chart

The applicant shall illustrate the position of each staff and line of responsibility/supervision. If the request is part of a large, multi-purpose organization, include an organization chart that illustrates the placement of this request.

Please see Grants-In-Aid Fiscal Year 2017 – “Attachment III. – Organizational Chart”

- YMCA of Honolulu – Association Executive Staff Organizational Chart
- YMCA of Honolulu - Kalihi Branch Organizational Chart

C. Compensation

The applicant shall provide the annual salaries paid by the applicant to the three highest paid officers, directors, or employees of the organization by position..

- Michael Broderick, President & CEO - \$223,194
- Michael Doss, Executive VP & COO - \$149,299
- Michael Chinaka, Senior VP & CFO - \$125,069

VI. Other

A. Litigation

The applicant shall disclose any pending litigation to which they are a party, including the disclosure of any outstanding judgement. If applicable, please explain.

The Association is involved in claims arising in the ordinary course of business. Management, after consultation with legal counsel, is of the opinion that the ultimate resolution of these matters will not have a material adverse effect on the Association's financial statements

B. Licensure or Accreditation

The applicant shall specify any special qualifications, including but not limited to licensure or accreditation that the applicant possesses relevant to this request.

Not Applicable

C. Private Educational Institutions

The applicant shall specify whether the grant will be used to support or benefit a sectarian or non-sectarian private educational institution. Please see Article X, Section 1, of the State Constitution for the relevance of this question.

Not Applicable

D. Future Sustainability Plan

The applicant shall provide a plan for sustaining after fiscal year 2016-17 the activity funded by the grant if the grant of this application is:

- (1) Received by the applicant for fiscal year 2016-17, but
- (2) Not received by the applicant thereafter.

The Kalihi YMCA has established, over many decades, an ability to develop, operate and sustain comprehensive programs for youth. These programs have been broadly recognized as among the most effective, community-based programs operating on the island of Oahu. This is due in large part to a Kalihi YMCA operational philosophy that requires programs to be easily accessible to youth, operated by skilled, compassionate staff and able to clearly demonstrate positive impact on the lives of participants.

In recent years, Kalihi YMCA staff has come to see how important it is for adolescents to have quality programs like Ho`okupa`a and Kauhale program available to them during their after non-school hours. Kalihi YMCA staff has also seen that programs like Ho`okupa`a and Kauhale program do not generate revenues sufficient to support operation. The most realistic avenue of support continues to be government funds whether city, state or federal. Foundations can be a source of funding, but tend to be time-limited or expressly for startup of programs. Kalihi YMCA staff has to be diligent in identifying and applying to appropriate government agencies for program funding. Our success in this process is partly due to our commitment to staying focused on our core mission: to serve youth residing in low-income communities on Oahu who need access to structured, high quality afterschool programs.

Funds utilized through this GIA would support personnel and infrastructure development that will be sustained in future years through a combination of redirecting existing YMCA resources, modifying job tasks of existing staff, seeking new funding through other granting sources and fund-raising initiatives, and developing new community partnerships and collaborations.

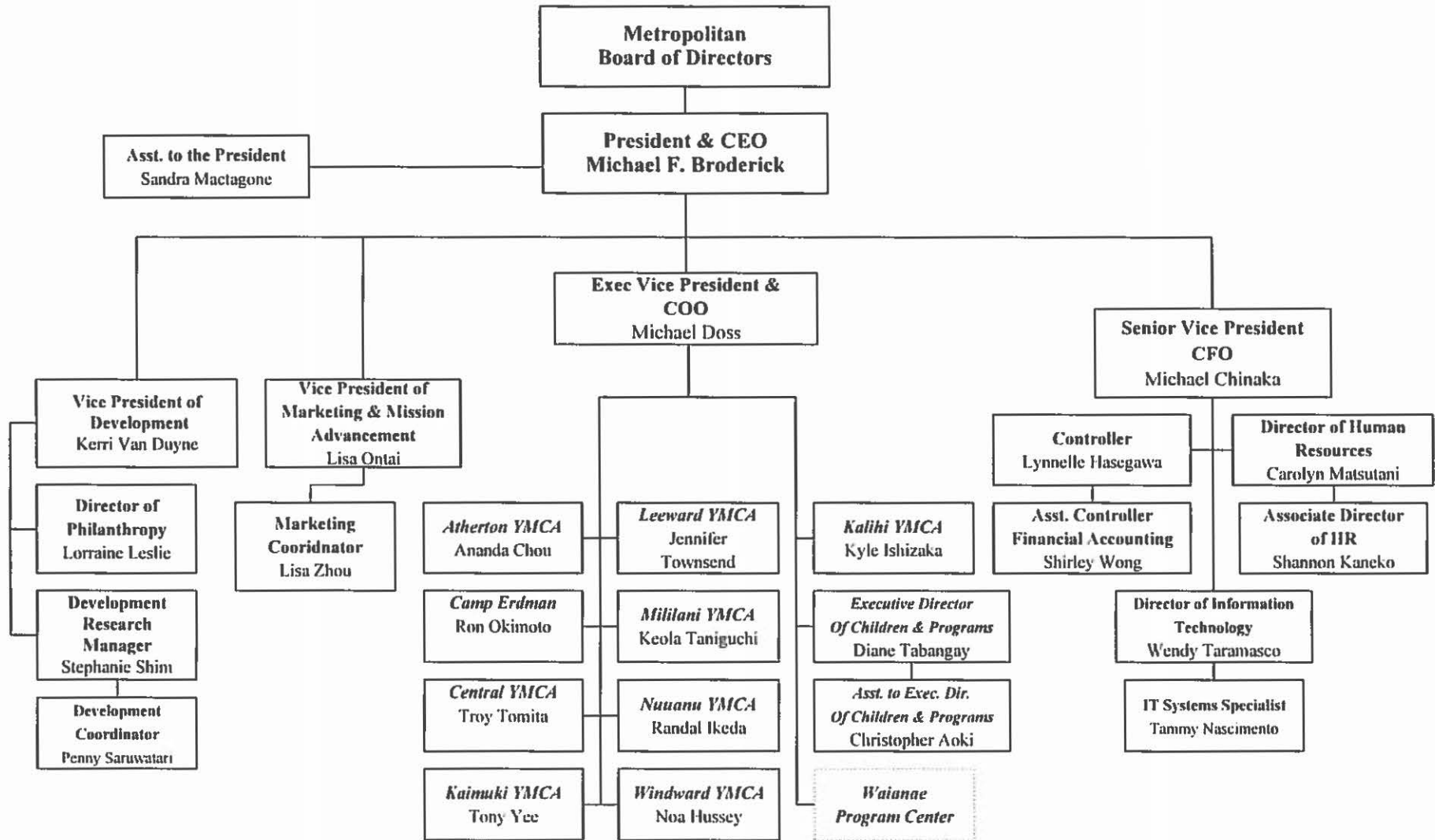
Some of the funding sources we will be approaching in the year ahead to help sustain Ho`okupa`a and Kauhale program will be DOH/ADAD prevention RFPs. In addition, we will be looking to secure a GIA from the city. We currently do not have funding from either source.

F. Certificate of Good Standing (If the Applicant is an Organization)

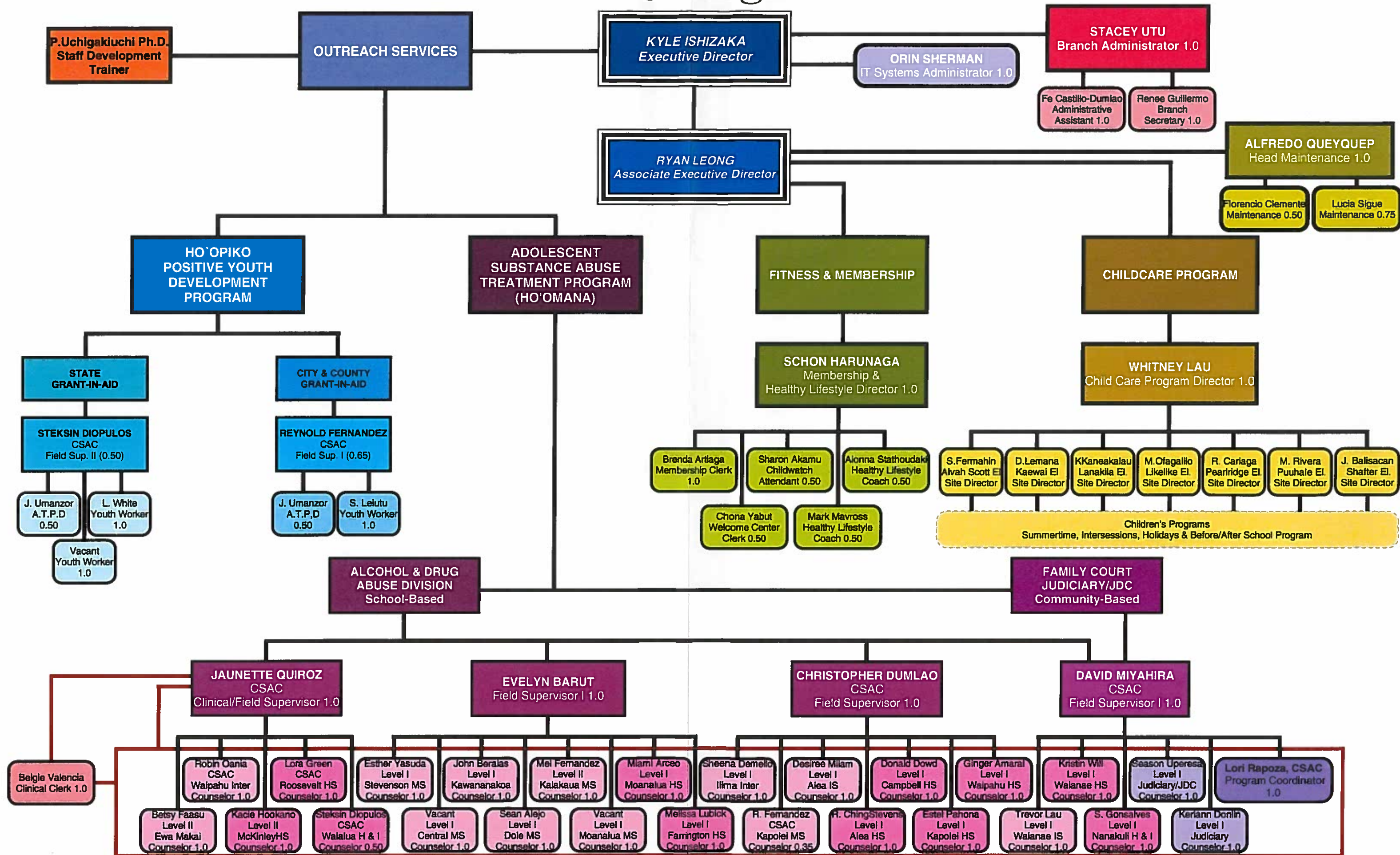
If the applicant is an organization, the applicant shall submit one (1) copy of a certificate of good standing from the Director of Commerce and Consumer Affairs that is dated no earlier than December 1, 2015.

Please see “Attachment IV – Certificate of Good Standing”

YMCA of Honolulu



Kalihi YMCA 2017 Organizational Chart



BUDGET REQUEST BY SOURCE OF FUNDS

Period: July 1, 2016 to June 30, 2017

Applicant: YMCA of Honolulu - Kalihi Branch

BUDGET CATEGORIES	Total State Funds Requested (a)	Total Federal Funds Requested (b)	Total County Funds Requested (c)	Total Private/Other Funds Requested (d)
A. PERSONNEL COST				
1. Salaries	110,315			
2. Payroll Taxes & Assessments	12,620			
3. Fringe Benefits	18,744			
TOTAL PERSONNEL COST	141,679			
B. OTHER CURRENT EXPENSES				
1. Airfare, Inter-Island				
2. Insurance	1,078			
3. Lease/Rental of Equipment				
4. Lease/Rental of Space				
5. Staff Training	2,000			
6. Supplies	14,772			
7. Telecommunication	554			
8. Utilities				
9. Mileage	4,779			
10. Postage	138			
11. Program Activities	10,000			
12. Indirect Cost	25,000			
13				
14				
15				
16				
17				
18				
19				
20				
TOTAL OTHER CURRENT EXPENSES	58,321			
C. EQUIPMENT PURCHASES	0			
D. MOTOR VEHICLE PURCHASES	0			
E. CAPITAL	0			
TOTAL (A+B+C+D+E)	200,000			
SOURCES OF FUNDING		Budget Prepared By:		
(a) Total State Funds Requested	200,000	Stacey Kealoha Utu (808) 848-2494		
(b) Total Federal Funds Requested	0	Name (Please type or print) Phone		
(c) Total County Funds Requested	0	Date		
(d) Total Private/Other Funds Requested	0	Signature of Authorized Official		
TOTAL BUDGET	200,000	Michael F. Broderick, President & CEO		
		Name and Title (Please type or print)		

BUDGET JUSTIFICATION - PERSONNEL SALARIES AND WAGES

Period: July 1, 2016 to June 30, 2017

Applicant: YMCA of Honolulu - Kalihi Branch

POSITION TITLE	FULL TIME EQUIVALENT	ANNUAL SALARY A	% OF TIME ALLOCATED TO GRANT REQUEST B	TOTAL STATE FUNDS REQUESTED (A x B)
Field Supervisor II (providing direct services)	1.00	\$54,096	50.00%	\$27,048
Associate Teen Program Director (providing direct services)	1.00	\$40,365	50.00%	\$20,183
Youth Worker	1.00	\$32,085	100.00%	\$32,085
Youth Worker	1.00	\$31,000	100.00%	\$31,000
				\$0
				\$0
				\$0
				\$0
				\$0
				\$0
				\$0
				\$0
				\$0
TOTAL:				\$110,315

JUSTIFICATION/COMMENTS:

Field Supervisor II provides program oversight and quality assurance, monitors program goals and contractual requirements, works along-side Youth Workers to co-facilitate group activities and provides individual services to program participants as needed. Works with Associate Teen Program Director to monitor program budget, curriculum, and action plan to meet the needs of target group and fulfill YMCA program outcomes and objectives. Associate Teen Program Director is responsible for program/activity planning, organizing, directing, coordinating, monitoring and controlling teen program(s). Works with Field Supervisor II in development of teen programs that promote Youth Development, Healthy Living and Social Responsibility. Youth Worker positions are responsible for being positive adult role models that promote and exemplify the YMCA core values of caring, honesty, respect and responsibility. Youth Worker positions work collaboratively with other agencies and community partners to delivery quality services and positive youth development activities for program participants.

BUDGET JUSTIFICATION - EQUIPMENT AND MOTOR VEHICLES

Period: July 1, 2016 to June 30, 2017

Applicant: YMCA of Honolulu - Kalihi Branch

DESCRIPTION EQUIPMENT	NO. OF ITEMS	COST PER ITEM	TOTAL COST	TOTAL BUDGETED
			\$ -	
			\$ -	
			\$ -	
			\$ -	
			\$ -	
TOTAL:				0

JUSTIFICATION/COMMENTS:

Equipment valued at > \$5,000 is not a requested budget line item for the 28th Legislature Grant Application.

DESCRIPTION OF MOTOR VEHICLE	NO. OF VEHICLES	COST PER VEHICLE	TOTAL COST	TOTAL BUDGETED
			\$ -	
			\$ -	
			\$ -	
			\$ -	
			\$ -	
TOTAL:				0

JUSTIFICATION/COMMENTS:

Purchase of Motor Vehicle(s) is not a requested budget line item for the 28th Legislature Grant Application.

BUDGET JUSTIFICATION - CAPITAL PROJECT DETAILS

Period: July 1, 2016 to June 30, 2017

Applicant: YMCA of Honolulu - Kalihi Branch

FUNDING AMOUNT REQUESTED						
TOTAL PROJECT COST	ALL SOURCES OF FUNDS RECEIVED IN PRIOR YEARS		STATE FUNDS REQUESTED	OF FUNDS REQUESTED	FUNDING REQUIRED IN SUCCEEDING YEARS	
	FY: 2014-2015	FY: 2015-2016	FY:2016-2017	FY:2016-2017	FY:2017-2018	FY:2018-2019
PLANS						
LAND ACQUISITION						
DESIGN						
CONSTRUCTION						
EQUIPMENT						
TOTAL:	0	0	0	0	0	0
JUSTIFICATION/COMMENTS:						
Capital Project expenses are not requested budget line items for the 28th Legislature Grant Application.						

GOVERNMENT CONTRACTS AND / OR GRANTS

Applicant: YMCA of Honolulu - Kalihi Branch

Contracts Total: 2,465,543

	CONTRACT DESCRIPTION	EFFECTIVE DATES	AGENCY	GOVERNMENT ENTITY (U.S. / State / Haw / Hon / Kau / Mau)	CONTRACT VALUE
1	Adolescent School-Based Substance Abuse Treatment Services	7/1/2016-6/30/2017	Department of Health / Alcohol and Drug Abuse Division	State of Hawai'i	2,055,000
2	Juvenile Outpatient Substance Abuse Treatment Services	7/1/2016-6/30/2017	Department of Health and Human Services / The Judiciary	State of Hawai'i	175,668
3	Juvenile Drug Court Substance Abuse Treatment Services	7/1/2016-6/30/2017	Department of Health and Human Services / The Judiciary	State of Hawai'i	84,875
4	YMCA of Honolulu - Kalihi Branch "Ho`opiko" Positive Youth Development Program	10/1/2015-9/30/2016	Department of Community Services / City and County of Honolulu	State of Hawai'i	150,000
5					
6					
7					
8					
9					
10					
11					
12					
13					
14					
15					
16					
17					
18					
19					
20					

**DECLARATION STATEMENT OF
APPLICANTS FOR GRANTS PURSUANT TO
CHAPTER 42F, HAWAII REVISIED STATUTES**

The undersigned authorized representative of the applicant certifies the following: _____

- 1) The applicant meets and will comply with all of the following standards for the award of grants pursuant to Section 42F-103, Hawaii Revised Statutes:
 - a) Is licensed or accredited, in accordance with federal, state, or county statutes, rules, or ordinances, to conduct the activities or provide the services for which a grant is awarded;
 - b) Complies with all applicable federal and state laws prohibiting discrimination against any person on the basis of race, color, national origin, religion, creed, sex, age, sexual orientation, or disability;
 - c) Agrees not to use state funds for entertainment or lobbying activities; and
 - d) Allows the state agency to which funds for the grant were appropriated for expenditure, legislative committees and their staff, and the auditor full access to their records, reports, files, and other related documents and information for purposes of monitoring, measuring the effectiveness, and ensuring the proper expenditure of the grant.

- 2) If the applicant is an organization, the applicant meets the following requirements pursuant to Section 42F-103, Hawaii Revised Statutes:
 - a) Is incorporated under the laws of the State; and
 - b) Has bylaws or policies that describe the manner in which the activities or services for which a grant is awarded shall be conducted or provided.

- 3) If the applicant is a non-profit organization, it meets the following requirements pursuant to Section 42F-103, Hawaii Revised Statutes:
 - a) Is determined and designated to be a non-profit organization by the Internal Revenue Service; and
 - b) Has a governing board whose members have no material conflict of interest and serve without compensation.

Pursuant to Section 42F-103, Hawaii Revised Statutes, for grants used for the acquisition of land, when the organization discontinues the activities or services on the land acquired for which the grant was awarded and disposes of the land in fee simple or by lease, the organization shall negotiate with the expending agency for a lump sum or installment repayment to the State of the amount of the grant used for the acquisition of the land.

Further, the undersigned authorized representative certifies that this statement is true and correct to the best of the applicant's knowledge.

Michael F. Broderick, President & CEO / YMCA of Honolulu _____

(Typed Name of Individual or Organization)

(Signature)

01/20/2016

(Date)

(Typed Name)

(Title)