

House District 30

Senate District 16

THE TWENTY-EIGHTH LEGISLATURE
APPLICATION FOR GRANTS
CHAPTER 42F, HAWAII REVISED STATUTES

Log No:

For Legislature's Use Only

Type of Grant Request:

GRANT REQUEST – OPERATING

GRANT REQUEST – CAPITAL

"Grant" means an award of state funds by the legislature, by an appropriation to a specified recipient, to support the activities of the recipient and permit the community to benefit from those activities.

"Recipient" means any organization or person receiving a grant.

STATE DEPARTMENT OR AGENCY RELATED TO THIS REQUEST (LEAVE BLANK IF UNKNOWN):

STATE PROGRAM I.D. NO. (LEAVE BLANK IF UNKNOWN):

1. APPLICANT INFORMATION:

Legal Name of Requesting Organization or Individual: Pacific Aviation Museum Pearl Harbor

Dba: (same) Pacific Aviation Museum Pearl Harbor

Street Address: 319 Lexington Boulevard, Historic Ford Island

Mailing Address: 319 Lexington Boulevard, Honolulu, Hawaii 96818

2. CONTACT PERSON FOR MATTERS INVOLVING THIS APPLICATION:

Name KENNETH H. DEHOFF, JR.

Title Executive Director, Operations

Phone # 808-441-1017

Fax # 808-441-1019

E-mail Director@PacificAviationMuseum.org

3. TYPE OF BUSINESS ENTITY:

- NON PROFIT CORPORATION INCORPORATED IN HAWAII
- FOR PROFIT CORPORATION INCORPORATED IN HAWAII
- LIMITED LIABILITY COMPANY
- SOLE PROPRIETORSHIP/INDIVIDUAL
- OTHER

6. DESCRIPTIVE TITLE OF APPLICANT'S REQUEST:

PACIFIC AVIATION MUSEUM PEARL HARBOR CONTROL TOWER ELEVATOR

4. FEDERAL TAX ID #: [REDACTED]

5. STATE TAX ID #: [REDACTED]

7. AMOUNT OF STATE FUNDS REQUESTED:

FISCAL YEAR 2017: \$ 550,000

8. STATUS OF SERVICE DESCRIBED IN THIS REQUEST:

- NEW SERVICE (PRESENTLY DOES NOT EXIST)
- EXISTING SERVICE (PRESENTLY IN OPERATION)

SPECIFY THE AMOUNT BY SOURCES OF FUNDS AVAILABLE AT THE TIME OF THIS REQUEST:

STATE \$ 0

FEDERAL \$ 0

COUNTY \$ 0

PRIVATE/OTHER \$ 0

TITLE: _____

KENNETH H. DEHOFF, JR., EXECUTIVE DIRECTOR, OPERATIONS
NAME & TITLE

1/15/16
DATE SIGNED



Application for Grants

If any item is not applicable to the request, the applicant should enter "not applicable".

I. Background and Summary

This section shall clearly and concisely summarize and highlight the contents of the request in such a way as to provide the State Legislature with a broad understanding of the request. Please include the following:

1. A brief description of the applicant's background

Pacific Aviation Museum Pearl Harbor is marking the 75th anniversary of the 1941 attack on Pearl Harbor with a series of commemorative events. Our Museum is one of 200 Smithsonian Affiliates, one of only 13 aviation museums in the country to enjoy the status with the Smithsonian Institution. Our Museum stands on Ford Island, a National Historic Landmark site, the epicenter of the bombing that hurled the U.S. into World War II.

We are an IRS 501(c)(3) tax-exempt nonprofit organization incorporated in 1999, now one of the four Pearl Harbor Historic Sites, among Hawaii's premier visitor destinations. We provide exceptional educational opportunities, including history, culture, and aviation sciences. Having welcomed over 1,600,000 visitors since opening our doors in December 2006, we share the history of Pearl Harbor, the heroes and heroines who made a difference, the impact of aviation in the Pacific region, and the role Hawaii has and continues to play in modern history. *Our mission is: "To develop and maintain an internationally recognized aviation museum on Ford Island that educates young and old alike, honors aviators and their support personnel who defended freedom in the Pacific Region and preserves Pacific aviation history."*

Unceasing efforts by Museum leaders, staff, and volunteers have kept Hawaii's legacy of valor, perseverance, and sacrifice alive. Government, military, and community leaders came together to save the Ford Island Control Tower from decay and to preserve the historic hangars that survived the Pearl Harbor attack on December 7, 1941. Our exhibits and programs carry forward the legacy of our "Greatest Generation," promoting a deeper understanding of and respect for the people and events of history. It is in this way we can best provide a foundation from which we might inspire the future.

Our education programs have impacted the learning experiences of more than 70,000 students statewide, bringing history and STEM subjects alive for people of all ages. In 2015 alone, we served almost 15,000 students through our Museum and outreach programs, designed to provide educational opportunities not accessible in the classrooms.

The history that unfolded after the Pearl Harbor attack is full of exceptional heroism, and the unity that followed to defend our way of life dramatically altered the world in the second half of the 20th century. Our exhibits and programs provide an authentic venue for visitors of all ages to understand the courage, sacrifice, and resilience demonstrated by Hawaii residents, military members, and U.S. citizens in the years following the Pearl Harbor attack, and the understanding and friendships that eventually evolved in the ensuing decades.

No other historic and geographic location in the world provides a more opportune location or facility than Pacific Aviation Museum Pearl Harbor to gather, connect, and forge relations – whether to learn, discuss, strategize, or heal wounds from our past. Our Museum stands on “hallowed ground,” an “aviation battlefield.” Our iconic Control Tower now stands as a symbol of courage and the peace that emerged following the devastation of a world war.

Pacific Aviation Museum’s economic impact to the state, since opening in December 2006 through the end of December 2015, in the way of tax payments totaled over \$2,100,000. (Breakdown on page 4, section 3.)

The Hawaii State Legislature recognized our Museum three times since 2010: the first “for sharing its knowledge about one of our nation’s most historic times and commemorating the brave men and women who fought for the freedom of our nation” as part of the Pearl Harbor Historic Sites; a second time for the Museum’s work in the community, designating it as the “Hawaii State Museum of Aerospace History”; and a third time in April 2013 marking our 1,000,000th visitor. TripAdvisor, one of the world’s largest travel sites, consistently ranks the Museum among the top ten aviation museums in America. FlipKey, a TripAdvisor company, recently announced that Pacific Aviation Museum has been recognized as #1 in Hawaii, in their “Top Historical Spots Worth Traveling For” list, based on industry research and traveler feedback,

2. The goals and objectives related to the request

The Ford Island Control Tower is the centerpiece of our Museum. When people think about Pearl Harbor, the image of the iconic red and white tower frequently comes to mind. The view from the tower on the “date which will live in infamy” in 1941 presented the unfolding battle. It remains today a symbol of freedom and peace. As we approach the 75th anniversary of the attack on Pearl Harbor, the importance of enabling the public a chance to ascend the tower, the only point of elevation on Pearl Harbor, is becoming increasingly clear - where they might best remember, understand and honor those who not only defended our freedom when it was threatened, but sacrificed all to change our world. We see this as a year of transition. With the passage of time, those who continue to have first-hand recollection of this pivotal moment in our history are fewer in number. Engaging families, veterans of past conflicts, and all men and women who serve today is at the heart of the planned 75th commemoration. The theme points to the aspirational vision: *Honoring the Past, Inspiring the Future*. Starting an 11-month

project in 2016 to complete the installation of an elevator in the Control Tower in 2017 will lend great significance for future generations and for the history of Pearl Harbor.

We are seeking GIA support to continue the work needed to open this national treasure to the public. Our ongoing project to restore the Control Tower began in 2011. Initial focus was on stabilizing the structure, removal of hazardous materials, and the exterior painting of the tower and the supporting Operations Building. Work to restore the two-story Aerological Tower that served as the runway/flight line control center on December 7, 1941 is underway, made possible by the 2014 GIA award and support from the Freeman Foundation.

A private foundation grant has been received to begin work on the interior of the Operations Building, the structure adjacent to the tower itself. A library and archive along with a public reading room and exhibit area are planned. This project will also restore utility, plumbing, and infrastructure improvements such as flooring, walls, ceilings, and other improvements.

Though work to replace/restore the exterior windows still remains, the key requirement enabling access is the activation/restoration of the Control Tower elevator. We are seeking \$550,000 to complete the elevator, giving the public access to the Ford Island Control Tower. Control Tower phases have been initiated based upon funding availability. Progress to date and outstanding requirements are listed below.

Once completed, the Control Tower will become home to our library and education areas available for public access. An operational elevator will provide an opportunity for students and visitors to ascend to the top of the Tower, gaining a view of Luke Field, Ford Island, and all of Pearl Harbor. It is clear from visitor feedback and student comments, that the inability to enter the Control Tower complex (inclusive of the Operations Building, the Aerological Tower, and the Control Cab) and ascend to the top of the structure is disappointing.

Restoration of the Control Tower has been divided into Three Phases:

- Phase 1 Exterior restoration (completed December 2011 with Federal grant support)
- Phase 1B Completion of the two-story Aerological Tower (under construction at the present time with completion slated for December, 2016 – funding for this effort combines past GIA and private sources)
- *Phase 2 Utilities, interior restoration, library, archive and public areas – (Total \$2.2 million, of which \$650,000 has been completed. \$1.55MM has been received from a private foundation to complete this area)
- *Phase 3 Elevator, windows and doors (Windows \$1.2 million; Elevator \$550,000)

*subject to future fund raising

3. The public purpose and need to be served

Our country has been navigating uncharted territory since September 11, 2001. The attacks on Paris on November 13, 2015 altered the course of many nations overnight. As we traverse a rapidly changing world wracked with turbulence, uncertainty, and increasing violence, what are the guideposts we leave to American youth and future generations?

Understanding history, both the events and the impact generated, inspires reverence and a continued commitment to seeking peaceful solutions to conflict. It is only through the development of an understanding of these events that we can teach tomorrow's leaders how to build a future in which purposeful decision-making thwarts the advent of fateful outcomes. As stated by Maya Angelou, "History, despite its wrenching pain, cannot be un-lived, but if faced with courage, need not be lived again." How many students today know how our nation united to fend off this threat to our way of life?

In many ways, our national commitment to freedom still drives our domestic and our international struggles. This year's 75th Commemoration of the Attack on Pearl Harbor will provide us with a very timely "teaching moment" opportunity for schools and youth organizations, not only in our communities, but across the United States, to learn about courage, unity, sacrifice, and the powerful driving force – a desire for personal freedom – that continues to underpin relationships at all levels. Throughout the years, we have focused on honoring and remembering the past, while inspiring our youth who will lead us into the future. Being able to start work on installing an elevator in the Control Tower, enabling the public and visitors to reach the very top of the iconic structure, will be a major milestone for the Museum and its effort to preserve and steward the historic Pearl Harbor/Ford Island structures that survived World War II.

Our tax contributions and total economic impact to the State of Hawaii in the 9 years since opening in December 2006 have amounted to \$2,108,000.

General Excise Tax:	\$673,000
Estimated G.E.T. on goods/services paid to/by museum vendors & contractors:	\$1,047,000
Estimated income tax paid by employees	\$ 388,000

4. Describe the target population to be served

Pacific Aviation Museum Pearl Harbor is working toward opening the Ford Island Control Tower to visitors, offering a unique opportunity to not only access a historic building, but to also view Ford Island from the vantage point at the top of the structure. The Museum welcomes 225,000 visitors annually from all over the world. Over 70,000 students, mostly from Hawaii, and including youth from mainland USA, Canada, Australia, Japan, and China, have benefited from our educational programs. The tower is among the most visible symbols of World War II and Pearl Harbor's battle years. With

the 75th anniversary of the Pearl Harbor attack coming up shortly, being able to take visitors to the very top of the Tower would generate renewed enthusiasm and add depth to the Museum/Ford Island experience. It would provide visitors of all ages with a chance to gain a more complete historical perspective of the events that unfolded in December 1941, from this very spot. The target population to be served: visitors from all over the world.

5. Describe the geographic coverage

Though we place strong emphasis in serving Oahu, the Neighbor Islands, and the mainland U.S., our geographic impact is global. School groups, historians, veterans, aviation enthusiasts, tourists, government and civilian officials visit the Museum from all over the world, including distant countries such as Japan, Korea, China, Indonesia, Vietnam, Laos, Canada, France, Germany, Russia, and Denmark, to name a few. The geographic coverage is virtually unlimited.

II. Service Summary and Outcomes

The Service Summary shall include a detailed discussion of the applicant's approach to the request. The applicant shall clearly and concisely specify the results, outcomes, and measures of effectiveness from this request. The applicant shall:

1. Describe the scope of work, tasks and responsibilities

One of the most distinct landmarks on Ford Island, a National Historic Landmark site, is our Control Tower. This world famous Tower complex, inclusive of the water tank, Control Cab, the two-story Aerological Tower, and the Operations Building, was left neglected and in near ruins until 2002, when the Museum conducted its first study to salvage it from oblivion. (Exhibit A attached "Before and After Restoration" photo.) GIA funding assistance in the amount of \$550,000 would cover the design, fabrication, supply, and installation of an elevator in the Control Tower.

- Design and install an operational elevator that runs to the top of the Control Tower. The 6-platform elevator has not functioned since the early 1960's.
- A new motor, cables, a passenger cabin, and doors at each of the four platforms to be restored will be needed.
- Repair elevator-related area floor/ceiling/walls.

Though not part of this grant request, additional restoration projects include:

Build out of the upper Control Cab, windows, doors – remainder of the \$1.5 MM.

Library, interior, exhibits at a projected cost of \$1.6 MM. This project will add education and administrative offices and a research library to preserve historic reference materials and documents, photographs, important artifacts and priceless special edition books to be made accessible to students, scholars,

veterans, and historians. Funding of \$1.5 million has been received to support this effort.

2. Provide a projected annual timeline for accomplishing the results or outcomes of the service

The timeframe envisioned for installing the elevator is eleven months, starting in August 1, 2016 and ending with the dedication and opening of the Control Tower with the fully functional elevator to visitors, in time for the 76th Anniversary of the Pearl Harbor attack on December 7, 2017. The envisioned breakdown is as follows:

August – November 2016	Permitting, plans development, bid process.
December 2016 – February 2017	Elevator installation preparation.
March – June 2017	Assessment/repair/replacement of other necessary hardware, and the work required for completion of the elevator installation.
July – October 2017	Complete interior and final tests/inspections before opening the operational elevator to the visitors.
December 2017 Dedication	Tower opening to visitors with functional elevator.

2. Describe its quality assurance and evaluation plans for the request. Specify how the applicant plans to monitor, evaluate, and improve their results

The Museum’s two Executive Directors ***Kenneth DeHoff, Operations*** and ***Elissa Lines, Development*** ensure adherence to the budget, quality assurance, and project accountability. Mr. DeHoff will also oversee all aspects of the project, including the bidding solicitation and tenders, cost estimate from blueprints and take offs, whether it be via traditional procurement, digital procurement, design-bid-build, or design-build methods. Operations Manager Raf Reyes, with support from an internal “build” committee, will work with contractors and vendors for daily detailed work plan(s) and ensure compliance with historic preservation standards, as well as ADA regulations and ADAAG recommendations. Project progress will be monitored on a weekly basis. Museum procurement policies will be followed and reviewed. Should unforeseen developments surface, the problem(s) will be identified and corrective action be pursued and implemented concurrently with a careful budget review.

The Museum team has successfully implemented and completed the earlier project(s) to stabilize and restore the exterior of the historic Ford Island Control Tower (photos attached) and the Aerological Tower.

4. List the measure(s) of effectiveness that will be reported to the State agency through which grant funds are appropriated (the expending

agency). The measure(s) will provide a standard and objective way for the State to assess the program's achievement or accomplishment. Please note that if the level of appropriation differs from the amount included in this application that the measure(s) of effectiveness will need to be updated and transmitted to the expending agency.

The effectiveness of the project will be evident and measurable by the successful installation of an operational elevator and build out of all elevator-related areas for safe visitor access to the top of the Control Tower. All invoices, payment receipts, and lists of project-related construction work carried out will be kept on file for evaluation. "Before" and "After" photos will also be provided to gauge the impact. If desired and upon request, the number of total visitors who utilize the Control Tower elevator for a period of one year after completion of the project can also be provided as a measure of effectiveness (available until December 31, 2018).

III. Financial

Budget

1. The applicant shall submit a budget utilizing the enclosed budget forms as applicable, to detail the cost of the request.

Pacific Aviation Museum Pearl Harbor is requesting \$550,000 to support the installation of an operational elevator and build out of all elevator-related areas for safe visitor access to the world-famous Ford Island Control Tower.

Detailed budget request and forms are attached.

2. The applicant shall provide its anticipated quarterly funding requests for the fiscal year 2017.

Quarter 1	Quarter 2	Quarter 3	Quarter 4	Total Grant
\$137,500	\$137,500	\$137,500	\$137,500	\$550,000

3. The applicant shall provide a listing of all other sources of funding that they are seeking for fiscal year 2017.

To date, we have not sought nor secured funding for this project from other sources for fiscal 2017.

4. The applicant shall provide a listing of all state and federal tax credits it has been granted within the prior three years. Additionally, the applicant shall provide a listing of all state and federal tax credits they have applied for or anticipate applying for pertaining to any capital project, if applicable.

None.

5. The applicant shall provide a listing of all federal, state, and county government contracts and grants it has been and will be receiving for program funding.

Program funding (Federal, state, and county government contracts/grants) awarded so far for 2016 includes:

- Hawai'i Council for the Humanities for our 2016 Living History Day: \$5,000.
- HTA-CPEP: \$11,000 for the Museum's 2016 Biggest Little Airshow.
- American Battlefield Protection Program funding awarded in July 2015 (total \$50,000) partially forthcoming for the preservation/restoration of the historic runway and hardstands.
- GIA funding awarded in April 2015 (total \$180,000) partially forthcoming for the Museum's Education Programs.
- Undetermined amount forthcoming from the 2015 Combined Federal Campaign.

6. The applicant shall provide the balance of its unrestricted current assets as of December 31, 2015.

Statement of Financial Position as of December 31, 2015 is attached.

IV. Experience and Capability

A. Necessary Skills and Experience

The applicant shall demonstrate that it has the necessary skills, abilities, knowledge of, and experience relating to the request. State your experience and appropriateness for providing the service proposed in this application. The applicant shall also provide a listing of verifiable experience of related projects or contracts for the most recent three years that are pertinent to the request.

Pacific Aviation Museum Pearl Harbor opened its doors to the public in December 2006. In less than 9 years, we welcomed more than 1,600,000 visitors from all over the world. It took the coming together of community leaders, military, business, and national officials to salvage the historic Ford Island Control Tower and the hangars that survived the 1941 Pearl Harbor attack from oblivion. With widespread support, the Museum has not only grown into one of Hawaii's premier tourist destinations, it provides an exceptional educational experience linking history with aviation science and technology and a reason for all Hawaii residents to be proud of our State history.

The monumental work to stabilize the Ford Island Control Tower and renovate its exterior began in January 2011. The project was successfully completed 12 months later with a dedication ceremony on December 7, 2011, in time for the Pearl Harbor 70th Anniversary Ceremonies. The Control Tower now stands as a symbol of peace,

ensuring that the historic events that occurred on Ford Island are honored and cherished. We are uniquely positioned to draw from our well-established partnerships with the Pearl Harbor Historic Sites, local educational, state, community, cultural, military and business organizations to make our resources accessible to provide further learning opportunities for all generations.

To ensure timely and cost-effective planning, we have approached the complete restoration in three phases. Phase 1 was a complete success. We seek support to move forward to Phase 2 of the Control Tower project, which will allow visitor access via an elevator to the top of the historic Tower for an unforgettable National Historic Landmark experience.

B. Facilities

The applicant shall provide a description of its facilities and demonstrate its adequacy in relation to the request. If facilities are not presently available, describe plans to secure facilities.

Pacific Aviation Museum Pearl Harbor, located on historic Ford Island, was built on hallowed ground to honor the lives lost and the sacrifices made to defend our nation which came under attack in December 1941. It is not just a Museum to preserve history. It is a gathering space serving populations of all ages and nationalities, with over 100,000 sq. ft. of space for gatherings of various sizes, whether it be conferences, meetings, ceremonies, galas, cocktail receptions, or parties.

Hangar 37, a 42,000 sq. ft. former seaplane hangar that survived the December 7, 1941 attack, is the first stop for Museum visitors with world-class exhibits, including a Japanese Zero diorama, an actual B-25B Mitchell similar to one used in the Doolittle Raid in April 1942, and a Stearman N2S-3 in which former President George H.W. Bush soloed. The Hangar provides over 25,000 square feet of gallery space against a backdrop of vintage 1940s décor.

Inside Hangar 37 is the **Education Center/ Flight Lab** – a 3,500 square foot multi-functional space that houses our education programs and is ideal for meetings, lectures, workshops, and social events. The adjacent Flight Simulator Lab provides a perfect backdrop for team-building or entertainment or simply a break from long meetings and/or conferences.

The multi-functional 200-seat **Theater** is also part of Hangar 37, with integrated sound, lighting, and projection system, designed for lectures, presentations, meetings, and film showings. There is also a 250 sq. ft. semi-private theater with a video screen and DVD player, for small group presentations of up to 15 people.

Hangar 79 is an 85,000 square foot facility. Planned exhibits will reflect the latter years of WWII and after, with the Battle of Midway and the MiG Alley Korean War Exhibit showcasing the Soviet MiG-15 and the U.S. F-86 Sabre aircraft, as well as many others

that played vital roles during the Vietnam War. The huge hangar, still intact with the bullet holes from the Pearl Harbor attack in 1941, provides 32,000 square feet of event space.

The **Ford Island Control Tower** complex is the centerpiece of the Museum, which includes the Aerological Tower, Operations Building, and the Control Cab. The first broadcast warning came from the Control Tower complex on the morning of December 7, 1941 when Pearl Harbor was attacked. The commencement of the elevator's restoration to take visitors to the very top of the Tower, would add much to the Museum experience to welcome guests from all over the world for the 75th Anniversary of the Attack on Pearl Harbor.

All facilities meet ADA requirements, with the exception of the Control Tower complex which is still under restoration.

Future plans also include the final Phase 3, which constitutes the build out of **Hangar 54** to share the ongoing advances of Pacific aviation, honoring those who served in the post WWII era, such as the Korea and Vietnam conflicts and the Cold War era. This final phase will also comprise an **Attack Interpretive Pavilion**, to provide a powerful interpretive experience of the Pearl Harbor attack in the middle of the historic battlefield, and a **Memorial Garden** to offer a quiet reflective space to honor all men and women who serve to defend our freedom and way of life.

V. Personnel: Project Organization and Staffing

A. Proposed Staffing, Staff Qualifications, Supervision and Training

The applicant shall describe the proposed staffing pattern and proposed service capacity appropriate for the viability of the request. The applicant shall provide the qualifications and experience of personnel for the request and shall describe its ability to supervise, train and provide administrative direction relative to the request.

An enthusiastic 32-member Board of Directors and an Advisory Board of 21 members comprised of senators, highly successful business men and women, along with many distinguished individuals from the United States Air Force, Navy, Marine Corps and Army provide governance, strategic planning, and oversight. Our contacts and partnerships extend across a wide spectrum of community, national, and international relationships that have been forged over the years.

The Museum's Board of Directors is chaired by **Admiral R. J. "Zap" Zlatoper**, USN (Ret.), who has served as Commander-in-Chief, U.S. Pacific Fleet. ADM Zlatoper is a leader in military and community activities, serving in the Executive Committee of the Military Affairs Council and as a Board Member of Pacific Forum.

Clinton R. Churchill, Trustee of the Estate of James Campbell since 1992 (former CEO) and former Commander of the Hawaii Air National Guard, has served as the

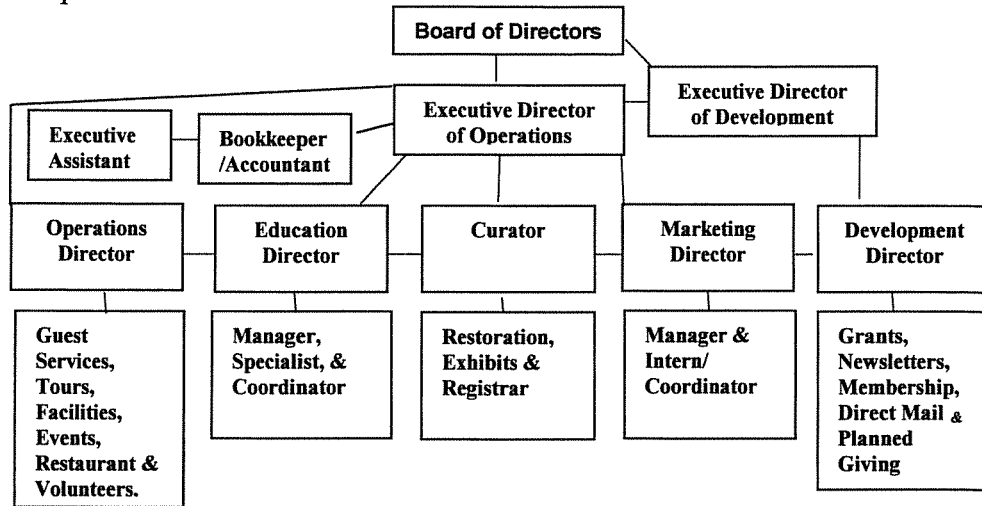
President of the Museum since 2001. Mr. Churchill has more than 45 years of business experience in addition to having chaired six other non-profit organizations.

The Museum is led by two Executive Directors:

- Executive Director of Operations **Kenneth H. DeHoff, Jr.** has successfully led Pacific Aviation Museum Pearl Harbor for the past eight years. He joined the Museum in November 2007. He brought more than 20 years of experience in technology design and business management to align organization strategies with business changes. Mr. DeHoff served as an Army Captain and a decorated combat Cobra pilot in Vietnam. He is also an Eagle Scout and a commercial pilot.
- Executive Director of Development **Elissa Lines** joined the Museum in 2013. She is a veteran in donor and business relations, who helped power EAA (Experimental Aircraft Association) in Oshkosh, Wisconsin to its present fame and magnitude. She brings a wealth of expertise and energy to further the Museum's vision and goals. As Vice President of EAA's Donor and Business Relations, Ms. Lines developed and executed a 5-year plan that yielded strategic impact that led to the organization's growth and success.

B. Organization Chart

The applicant shall illustrate the position of each staff and line of responsibility/supervision. If the request is part of a large, multi-purpose organization, include an organization chart that illustrates the placement of this request.



C. Compensation

The applicant shall provide the annual salaries paid by the applicant to the three highest paid officers, directors, or employees of the organization by position..

Executive Director, Operations: \$125,000
 Executive Director, Development: \$180,000
 Marketing Director: \$82,000

VI. Other

A. Litigation

The applicant shall disclose any pending litigation to which they are a party, including the disclosure of any outstanding judgement. If applicable, please explain.

Pacific Aviation Museum Pearl Harbor has no pending litigation nor outstanding judgments.

B. Licensure or Accreditation

The applicant shall specify any special qualifications, including but not limited to licensure or accreditation that the applicant possesses relevant to this request.

Pacific Aviation Museum Pearl Harbor completes the Pearl Harbor Historic Sites along with the USS *Arizona* Memorial, the Battleship *Missouri* Memorial, and the USS *Bowfin*. In June 2012, our Museum was also recognized as a Smithsonian affiliate, as one of more than 180 partners within the family of the world's largest museum and research complex. The Museum is also an affiliate with the Naval Aviation Museum in Pensacola, FLA, and the USAF Museum in Dayton, Ohio.

C. Private Educational Institutions

The applicant shall specify whether the grant will be used to support or benefit a sectarian or non-sectarian private educational institution. Please see Article X, Section 1, of the State Constitution for the relevance of this question.

The grant will not be used to support or benefit a sectarian or non-sectarian private educational institution.

D. Future Sustainability Plan

The applicant shall provide a plan for sustaining after fiscal year 2016-17 the activity funded by the grant if the grant of this application is:

- (1) Received by the applicant for fiscal year 2016-17, but
- (2) Not received by the applicant thereafter.

Our Museum, which opened in 2006, has grown continuously over the years, with support from private foundations, charities, and individuals through various fundraising activities. As stewards of the historic Control Tower and 3 World War II Hangars, we provide access to not only our exhibits, but offer programs for underserved communities and schools as a vital part of our mission. We will continue to pursue these goals after the funding period for the restoration/installation of the Control Tower elevator ends. The GIA grant will increase access to this iconic structure to visitors from all over the world. Long term plans are in place to provide a full historic perspective of Pearl Harbor and our nation's history, and to serve a growing number of visitors from all over the world to enrich their Hawaii experience.

E. Certificate of Good Standing (If the Applicant is an Organization)

If the applicant is an organization, the applicant shall submit one (1) copy of a certificate of good standing from the Director of Commerce and Consumer Affairs that is dated no earlier than December 1, 2015.

Attached is a Certificate of Good Standing, dated January 7, 2016.

BUDGET REQUEST BY SOURCE OF FUNDS

Period: July 1, 2016 to June 30, 2017

App Pacific Aviation Museum Pearl Harbor

BUDGET CATEGORIES	Total State Funds Requested (a)	Total Federal Funds Requested (b)	Total County Funds Requested (c)	Total Private/Other Funds Requested (d)
A. PERSONNEL COST				
1. Salaries				
2. Payroll Taxes & Assessments				
3. Fringe Benefits				
TOTAL PERSONNEL COST				
B. OTHER CURRENT EXPENSES				
1. Airfare, Inter-Island				
2. Insurance				
3. Lease/Rental of Equipment				
4. Lease/Rental of Space				
5. Staff Training				
6. Supplies	20,000			25,500
7. Telecommunication				
8. Utilities				
9. Planning	50,000			
10. Design	50,000			
11				
12				
13				
14				
15				
16				
17				
18				
19				
20				
TOTAL OTHER CURRENT EXPENSES	120,000			
C. EQUIPMENT PURCHASES				
D. MOTOR VEHICLE PURCHASES				
E. CAPITAL	430,000			
TOTAL (A+B+C+D+E)	550,000			25,500
SOURCES OF FUNDING		Budget Prepared By:		
(a) Total State Funds Requested	550,000	Elissa Lines 808-445-9069		
(b) Total Federal Funds Requested		N [REDACTED] Phone		
(c) Total County Funds Requested		[REDACTED] 1/20/2016		
(d) Total Private/Other Funds Requested	25,500	S [REDACTED] Date		
TOTAL BUDGET	575,500	Kenneth H. DeHoff, Jr., Executive Director, Operations		
		Name and Title (Please type or print)		

Pacific Aviation Museum Pearl Harbor
Statement of Financial Position
December 31, 2015

DRAFT

ASSETS

Current Assets

Cash unrestricted	\$	607,995.56
Cash temp. restricted		923,224.19
BOH-Institutional Inv.		33,976.12
Scholarship fund		109,572.19
Pledge receivable, net		361,619.92
Accounts receivable-operations		425,727.51
Grant receivable		66,667.00

Total Current Assets 2,528,782.49

Property and Equipment

Museum fixed assets & equip.	17,113,646.01
Accumulated depreciation	(3,401,972.74)
Collections	7,837,624.05

Total Property and Equipment 21,549,297.32

Other Assets

Grant receivable	1,000,000.00
Other assets	220,337.86

Total Other Assets 1,220,337.86

Total Assets \$ 25,298,417.67

LIABILITIES AND NET ASSETS

Current Liabilities

Curr mat-Long term debt	\$	51,560.52
Accounts payable		228,029.22
Other current liabilities		614,058.66

Total Current Liabilities 893,648.40

Long-Term Liabilities

Security Deposit - Catering	8,000.00
Notes payable	1,201,540.28
Less curr mat-Long term debt	(51,560.52)

Total Long-Term Liabilities 1,157,979.76

Total Liabilities 2,051,628.16

Net Assets

Net assets	21,147,574.85
Excess revenues over expenses	2,099,214.66

Total Capital 23,246,789.51

Total Liabilities & Net Assets \$ 25,298,417.67

BUDGET JUSTIFICATION - EQUIPMENT AND MOTOR VEHICLES

Period: July 1, 2016 to June 30, 2017

Applicant: Pacific Aviation Museum Pearl Harbor

DESCRIPTION EQUIPMENT	NO. OF ITEMS	COST PER ITEM	TOTAL COST	TOTAL BUDGETED
N/A			\$ -	
			\$ -	
			\$ -	
			\$ -	
			\$ -	
TOTAL:			\$ -	
JUSTIFICATION/COMMENTS:				

DESCRIPTION OF MOTOR VEHICLE	NO. OF VEHICLES	COST PER VEHICLE	TOTAL COST	TOTAL BUDGETED
			\$ -	
			\$ -	
			\$ -	
			\$ -	
			\$ -	
TOTAL:			\$ -	
JUSTIFICATION/COMMENTS:				

BUDGET JUSTIFICATION - CAPITAL PROJECT DETAILS

Period: July 1, 2016 to June 30, 2017

Applicant: Pacific Aviation Museum Pearl Harbo

FUNDING AMOUNT REQUESTED						
TOTAL PROJECT COST	ALL SOURCES OF FUNDS RECEIVED IN PRIOR YEARS		STATE FUNDS REQUESTED	OF FUNDS REQUESTED	FUNDING REQUIRED IN SUCCEEDING YEARS	
	FY: 2014-2015	FY: 2015-2016	FY: 2016-2017	FY: 2016-2017	FY: 2017-2018	FY: 2018-2019
PLANS	51000		50000			
LAND ACQUISITION						
DESIGN			50000			
CONSTRUCTION (Capital)	499000		430000			
EQUIPMENT (Supplies)			20000			
TOTAL:	550000*		550000			
JUSTIFICATION/COMMENT						
Please see attached sheet for Justification Comments for the GIA 2016 - 2017 request.						

BUDGET JUSTIFICATION – CAPITAL PROJECT DETAILS
July 1, 2016 – June 30, 2017

Pacific Aviation Museum Pearl Harbor – Historic Control Tower Elevator Estimate

- Speed of the elevator, approx. 350 feet per minute
- Number of floors: 4
- Travel height 269 feet 6 in.

Total Project Estimate: \$575,500

GIA Funds requested: \$550,000

Museum Funds: \$ 25,500

Breakdown as follows:

\$530,000 includes planning, design, manufacturing, construction, installation and partial supplies as follows:

Planning	\$50,000	
Design	\$50,000	
Construction/Capital	\$430,000	
Elevator control & electrical systems		
Microprocessor-based control system		
Hoist Motor		
Compensation ropes		
Rope gripper		
Speed governor for car		
Main car operating panel		
Lighting		
Telephones		
Supplies	\$45,500	
All Sheaves		\$4,000
New Cab enclosures/doors		\$23,000
Removal of rust/paint area		\$13,000
Hoistway Facia & dust covers		\$5,500
TOTAL	\$575,500	

*Supplies total: \$45,500 (of which \$25,500 to be absorbed by PAMPH funding)

Project entails:

- Replacing outdated technology and providing a solution for elevator control and electrical systems
- New microprocessor-based control system to perform the functions of safe elevator motion (includes hardware to connect, transfer and interrupt power, and protect the motor against overloading; utilizes diagnostics for servicing, trouble-shooting, and adjusting).
- New Hoist Motor to meet the service encountered in elevator operation, designed to stand the loads encountered for elevator service, rated in accordance with established industry standards.

- Hoist cable guards to be installed at the front and rear of each machine.
- New compensation ropes as required.
- A new rope gripper to prevent the car from striking the overhead structure due to a failure in the hoist motor, brake, control system, etc. and detect unintended car movement.
- Speed governor to activate car safety.
- Main Car Operating Panel, including an emergency stop switch, alarm button and other devices required by applicable code.
- Lighting and L.E.D. illuminating buttons for each car.
- Telephones for each elevator, meeting A.D.A requirements.

GOVERNMENT CONTRACTS AND / OR GRANTS

Apt Pacific Aviation Museum Pearl Harbor

Contracts Total:

246,000

	CONTRACT DESCRIPTION	EFFECTIVE DATES	AGENCY	GOVERNMENT ENTITY (U.S. / State / Haw / Hon / Kau / Mau)	CONTRACT VALUE
1	Hawaii Council for the Humanities (2016 Living History Day)	9.24.2016		HCH/NEH	5,000
2	HTA-CPEP (2016 Biggest Little Airshow)	June 4 & 5, 2016		Hon/HTA	11,000
3	American Battlefield Protection Program (Preservation of Historic Runw	8/1/15 - 7/30/17		U.S.	50,000
4	GIA awarded in April 2015 (Education Programs)	1/1/16 - 12/31/16		State	180,000
5	2015 Combined Federal Campaign			U.S.	undetermined
6					
7					
8					
9					
10					
11					
12					
13					
14					
15					
16					
17					
18					
19					
20					
21					
22					
23					
24					
25					
26					
27					
28					

**DECLARATION STATEMENT OF
APPLICANTS FOR GRANTS PURSUANT TO
CHAPTER 42F, HAWAII REVISIED STATUTES**

The undersigned authorized representative of the applicant certifies the following:

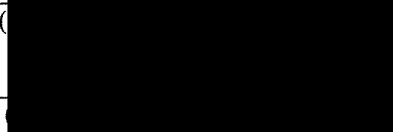
- 1) The applicant meets and will comply with all of the following standards for the award of grants pursuant to Section 42F-103, Hawaii Revised Statutes:
 - a) Is licensed or accredited, in accordance with federal, state, or county statutes, rules, or ordinances, to conduct the activities or provide the services for which a grant is awarded;
 - b) Complies with all applicable federal and state laws prohibiting discrimination against any person on the basis of race, color, national origin, religion, creed, sex, age, sexual orientation, or disability;
 - c) Agrees not to use state funds for entertainment or lobbying activities; and
 - d) Allows the state agency to which funds for the grant were appropriated for expenditure, legislative committees and their staff, and the auditor full access to their records, reports, files, and other related documents and information for purposes of monitoring, measuring the effectiveness, and ensuring the proper expenditure of the grant.

- 2) If the applicant is an organization, the applicant meets the following requirements pursuant to Section 42F-103, Hawaii Revised Statutes:
 - a) Is incorporated under the laws of the State; and
 - b) Has bylaws or policies that describe the manner in which the activities or services for which a grant is awarded shall be conducted or provided.

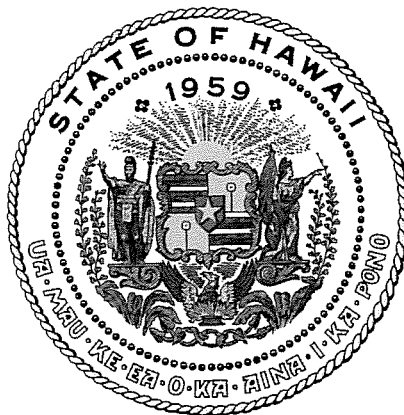
- 3) If the applicant is a non-profit organization, it meets the following requirements pursuant to Section 42F-103, Hawaii Revised Statutes:
 - a) Is determined and designated to be a non-profit organization by the Internal Revenue Service; and
 - b) Has a governing board whose members have no material conflict of interest and serve without compensation.

Pursuant to Section 42F-103, Hawaii Revised Statutes, for grants used for the acquisition of land, when the organization discontinues the activities or services on the land acquired for which the grant was awarded and disposes of the land in fee simple or by lease, the organization shall negotiate with the expending agency for a lump sum or installment repayment to the State of the amount of the grant used for the acquisition of the land.

Further, the undersigned authorized representative certifies that this statement is true and correct to the best of the applicant's knowledge.

Kenneth H. DeHoff, Jr. Pacific Aviation Museum Pearl Harbor
( ation)
1/19/16
(Date)

Kenneth H. DeHoff, Jr. Executive Director, Operations
(Typed Name) (Title)



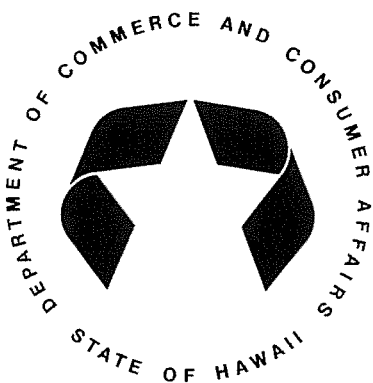
Department of Commerce and Consumer Affairs

CERTIFICATE OF GOOD STANDING

I, the undersigned Director of Commerce and Consumer Affairs of the State of Hawaii, do hereby certify that

PACIFIC AVIATION MUSEUM PEARL HARBOR

was incorporated under the laws of Hawaii on 08/11/1998 ; that it is an existing nonprofit corporation; and that, as far as the records of this Department reveal, has complied with all of the provisions of the Hawaii Nonprofit Corporations Act, regulating domestic nonprofit corporations.



IN WITNESS WHEREOF, I have hereunto set my hand and affixed the seal of the Department of Commerce and Consumer Affairs, at Honolulu, Hawaii.

Dated: January 07, 2016



Director of Commerce and Consumer Affairs

Exhibit A

Historic Ford Island Control Tower Restoration Project: “Before and After”

