

House District _____
Senate District _____

THE TWENTY-EIGHTH LEGISLATURE
APPLICATION FOR GRANTS
CHAPTER 42F, HAWAII REVISED STATUTES

Log No:

For Legislature's Use Only

Type of Grant Request:

GRANT REQUEST – OPERATING

GRANT REQUEST – CAPITAL

"Grant" means an award of state funds by the legislature, by an appropriation to a specified recipient, to support the activities of the recipient and permit the community to benefit from those activities.

"Recipient" means any organization or person receiving a grant.

STATE DEPARTMENT OR AGENCY RELATED TO THIS REQUEST (LEAVE BLANK IF UNKNOWN): _____

STATE PROGRAM I.D. NO. (LEAVE BLANK IF UNKNOWN): _____

1. APPLICANT INFORMATION:

Legal Name of Requesting Organization or Individual:

Kaua'i Economic Development Board

Dbas:

Kaua'i Creative Technology Center

Street Address:

**4290 Rice Street
Lihu'e, HI 96766**

Mailing Address:

**Kaua'i Economic Development Board
4290 Rice Street
Lihu'e, HI 96766**

2. CONTACT PERSON FOR MATTERS INVOLVING THIS APPLICATION:

Name **Susan Tai Kaneko**

Title **President & CEO**

Phone # **(808) 245-6692**

Fax # **(808) 246-1089**

E-mail **skaneko@kedb.com**

3. TYPE OF BUSINESS ENTITY:

- NON PROFIT CORPORATION INCORPORATED IN HAWAII
 FOR PROFIT CORPORATION INCORPORATED IN HAWAII
 LIMITED LIABILITY COMPANY
 SOLE PROPRIETORSHIP/INDIVIDUAL
 OTHER

6. DESCRIPTIVE TITLE OF APPLICANT'S REQUEST:

FUNDING IS REQUESTED FOR CAPITAL CONSTRUCTION COSTS OF THE NEW KAUA'I CREATIVE TECHNOLOGY CENTER (KCTC), A FILM INDUSTRY JOB TRAINING AND WORKFORCE DEVELOPMENT HUB WITH STATE-OF-THE-ART FACILITIES AND PROGRAMS FOR FILMING, EDITING, PERFORMANCES, COWORKING AND MORE.

THE KCTC WILL BE THE ONLY PROFESSIONAL FILM STUDIO AND POST-PRODUCTION FACILITY ON KAUA'I; THE FIRST TO BRING RELIABLE, HIGH-SPEED BROADBAND INTERNET TO THE ISLAND; AND THE AMPLIFIER THAT WILL TAKE AN ESTABLISHED, THRIVING SECTOR TO THE NEXT LEVEL. IT WILL SERVE NOT ONLY THE PROFESSIONAL INDUSTRY, BUT ALSO THE COMMUNITY, AND IT WILL BE A COMMUNITY GATHERING PLACE OF INNOVATION AND ECONOMIC GROWTH.

4. FEDERAL TAX ID #: _____

5. STATE TAX ID #: _____

7. AMOUNT OF STATE FUNDS REQUESTED:

FISCAL YEAR 2017: \$ 2,000,000

8. STATUS OF SERVICE DESCRIBED IN THIS REQUEST:

- NEW SERVICE (PRESENTLY DOES NOT EXIST)
 EXISTING SERVICE (PRESENTLY IN OPERATION)

SPECIFY THE AMOUNT BY SOURCES OF FUNDS AVAILABLE AT THE TIME OF THIS REQUEST:

STATE \$ 500,000* *FUNDS NOT YET RELEASED. GIA FY2016
FEDERAL \$ 0
COUNTY \$ 75,000
PRIVATE/OTHER \$ 0

TYPE OF REPRESENTATIVE: _____

SUSAN TAI KANEKO, PRESIDENT & CEO

NAME & TITLE

1/21/16

DATE SIGNED



Application for Grants

If any item is not applicable to the request, the applicant should enter "not applicable".

I. Background and Summary

This section shall clearly and concisely summarize and highlight the contents of the request in such a way as to provide the State Legislature with a broad understanding of the request. Please include the following:

1. A brief description of the applicant's background;

The Kaua'i Economic Development Board (KEDB) has successfully initiated, managed and implemented dozens of high-impact projects over the past 32 years in partnership with local businesses as well as local, state and federal government agencies.

KEDB is a private, nonprofit 501(c)(3) organization formed in 1984 by a group of business leaders who recognized the need to broaden and strengthen Kaua'i's economy. The primary purposes of the organization are to explore potential areas for economic diversification and create and strengthen industries that can flourish on Kaua'i. KEDB's projects over the past 30 years have driven economic growth in various sectors including technology, education, tourism, energy and agriculture. As Kaua'i's economic sectors expand and evolve, KEDB continues to seek new opportunities to bolster Kaua'i's established and emerging industries – benefiting both those directly involved and the entire community.

Since 1999, KEDB has:

- initiated and managed more than \$7 million in capital construction projects
- administered program grant appropriations of more than \$1.5 million

Among its many initiatives, KEDB has led and managed the update of the Comprehensive Economic Development Strategy (CEDS) report for the County of Kaua'i since 2004 and is currently leading the update of the CEDS for 2016-2020. The idea for a Kaua'i Creative Technology Center (KCTC), the project that is the focus of this Grant-in-Aid application, was first proposed in the CEDS report published in March 2010 by the County of Kaua'i Office of Economic Development and KEDB under an award from the U.S. Department of Commerce, Economic Development Administration. The KCTC is one of several CEDS-based projects being conducted under the auspices of KEDB to build regional capacity and guide economic prosperity and resiliency.

2. The goals and objectives related to the request;

KEDB's request of \$2 million will be used toward the construction of the Kaua'i Creative Technology Center (KCTC). The KCTC will be a new, centrally located 30,000-square-foot world-class facility with multipurpose space for training, filming, editing, performances, lectures, meetings, business development and community programs in the creative industries sector.

The goal of this request is to secure funding toward the construction of the KCTC. The pre-construction phase of design and environmental planning is underway and will be completed in early 2016. Our objectives are to begin construction in 2017 and open our doors to the community in 2018.

This landmark facility will be constructed adjoining the existing Kaua'i War Memorial Convention Hall in the heart of Līhu'e, Kaua'i. Construction will include the new KCTC building and some improvements to the Convention Hall. Improvements to the historic Convention Hall include 21st century stage production technology upgrades, additional parking stalls to accommodate increased traffic and site usage, and, potentially, power generators to support the Convention Hall's role as an emergency shelter for the community.

Whenever possible, KEDB will hire locally throughout the construction phase of the project to ensure funds from the GIA go directly back toward creating new jobs and economic growth on the island.

(See attached KCTC Viewbook for KCTC artist rendering and floor plan.)

3. The public purpose and need to be served;

As Kaua'i's first and only professional film studio and production hub, the Kaua'i Creative Technology Center (KCTC) will provide much-needed facilities, equipment and workforce training programs to increase film industry revenues and creative industries career readiness and opportunities on the island. It will connect Kaua'i with the global creative industries marketplace as the first facility to bring reliable high-speed broadband Internet to Kaua'i.

Kaua'i is the only county in the state without its own professional film studio, though it has been a premier filming destination for more than 80 years. As the setting for famous blockbusters such as Pirates of the Caribbean, Jurassic Park, Avatar, Blue Hawaii, and South Pacific, Kaua'i is recognized globally as a filming location paradise. The creation of a new state-of-the-art film studio, KCTC, will amplify filmmaking on the island by offering currently unavailable technology and resources that will make it more attractive to shoot on Kaua'i.

The KCTC will directly support the State's Department of Business, Economic Development & Tourism's (DBEDT) mission to embrace innovation and be globally competitive, DBEDT's Creative Industries Division's goal of advocating for and accelerating the growth of Hawai'i's creative industries, along with the County of Kaua'i's goal to increase high-level film location productions and expand business development efforts.

The Projected Impact of the KCTC

- **Create new jobs in the creative industries.**
 - Bolster Kaua'i's economy, which currently depends predominantly on tourism and agriculture, by creating economic diversification and adding a new, viable and relevant economic stream – creative technology.

- o Create 40 construction jobs during the three-year construction period, and 10 permanent jobs for KCTC staff.¹
 - o Create nearly 130 new jobs over the first three years after opening, potentially doubling the current growth rate in Kaua'i's creative sector.²
 - o Reduce Kaua'i "brain drain" – the loss of local residents to out-of-state career opportunities – by stimulating local artistic and cultural endeavors in creative media with the availability of training programs and classes, production and co-working space, media production equipment, and high-speed broadband Internet.
 - o Support small business development by providing technology and resources, including multipurpose space and reliable high-speed broadband Internet connection for meetings, seminars, video conferencing and presentations.
- **Provide advanced training and education to Kaua'i residents in a variety of 21st century creative technology fields, including web and app development, animation, robotics, television and film production, and editing.**
 - o Serve at least 100 youth, grades K-20, annually with programs that complement and supplement DOE schools, Hō'iike Community Television, private institutions, and Kaua'i Community College offerings. By 2024, it is estimated that the KCTC could serve the equivalent of 15% of the current student population on Kaua'i with training, mentorship and internship opportunities.⁴
 - o 'Graduate' 300 people per year through industry-level job training and workforce development, on par with Hollywood and Silicon Valley. The KCTC will be the creative industries workforce training center on the island, and a go-to resource for productions needing crew members and talent.
 - **Attract more large-scale film productions and provide state-of-the-art facilities and equipment as well as more local crew members to support production needs.**
 - o The demand for television, film, and other media production in Hawai'i, and especially on Kaua'i, is growing each year. Recent productions include the *Sports Illustrated* Swimsuit Edition (print and video), *Jurassic World*, *Pirates of the Caribbean: On Stranger Tides*, and *The Biggest Loser*.

In 2015, there were a total of 28 media production projects on Kaua'i that received permit applications through the County of Kaua'i, including:

- 10 TV Shows/Series
- 5 Commercials/Print Ads
- 3 Music/Videos
- 8 Documentaries
- 2 Travel Productions

The economic and workforce impact to Kaua'i's economy for 2015 was 194 film days or 53% of the entire year and \$1,378,500 in total production revenue. Based on a standard multiplier of 1.75, the economic impact and contribution to Kaua'i's economy exceeded \$2.4 million, as these productions provide invaluable publicity and promotion for the state and the island and create significant revenue through transportation, hotel rooms, dining, entertainment and sales of goods. Yet, there are workforce opportunities that are not being fully leveraged – of the 193 crew positions

needed for these projects, only 77 (39%) went to Kaua'i residents. (Note: The total economic impact is estimated to be even greater, as this data only reflects County of Kaua'i permits and does not include productions filmed on private and state-owned locations.)³

The KCTC aims to increase expenditures by large-scale film productions on Kaua'i to \$4.1 million by 2020 (from the 2014 expenditure of \$2.5 million) and increase local film crew member hires by more than 100% by 2020.

- o The KCTC will bring the first reliable, high-speed broadband Internet connection to the island. Broadband will empower people on Kaua'i to collaborate and create with others across the globe. It will also reduce the need for costly expedited shipping of footage on hard drives to and from Kaua'i and allow for smoother production processes and coordination between the crews on location and studios anywhere in the world.

Conversations have begun with the Hawai'i Strategic Development Corporation (HSDC), GVS Connect, Hawaiian Telcom and Oceanic Time Warner Cable to outfit the facility with state-of-the-art multi-gigabit connectivity. The new fiber connection service that recently launched at the Honua Studios in Kona as part of a pilot project under the State of Hawaii's HI Growth Initiative provides live real-time conferencing and the ability to securely transfer and edit raw High Definition (HD) dailies to producers and studios around the world. This type of fiber connection is what KCTC will provide on Kaua'i when it opens in late 2018.

- **Support the visitor industry and mitigate cyclical downturns by increasing film-induced tourism.**

- o Film-induced tourism is the phenomenon of films and television programs encouraging viewers to visit the county or region where filming occurred.⁴ As an example of successful film-induced tourism, the New Zealand Tourism Board estimated that the amount of exposure New Zealand gained from the first Lord of the Rings film would have cost more than \$41 million if the same amount of exposure was gained through destination marketing efforts.⁵ As a top-tier filming destination, Kaua'i can reap the benefits of serving as the location for blockbuster movies and hit TV shows, and attract visitors who are "recession proof" and actively seek out the settings of their favorite films and series.

¹ Source: Arts and Economic Prosperity IV Calculator, American for the Arts, January 2015. Hawaii's Creative Industries, March 2015.

² Source: Creative Technology Center Business Plan, September 2013

³ Source: Kaua'i Film Commission

⁴ Source: Creative Technology Center Business Plan, September 2013

⁵ Source: Economic and Social Impacts of the Florida Film and Entertainment Industry Financial Incentive Program, March 2013

4. Describe the target population to be served; and

The KCTC will serve a diverse population of Kaua'i residents including K-12 students, community college students, adults and seniors; Kaua'i businesses; and creative industry professionals from out of state.

The creative industries represent a largely untapped area of opportunity for Kaua'i youth and residents to gain high-paying jobs and pursue the careers of the future. Currently, the major employment sectors are tourism/hospitality, agriculture and government. According to the U.S. Census Bureau, 11% of Kaua'i's population of approx. 70,000 lives under the poverty level, and the median household income is \$62,052, nearly 9% below the state median household income of \$67,402. In addition, Kaua'i's unemployment rate is the second highest of the Hawaiian islands at 4.8% (as of Sept. 2015).

The KCTC's training and education programs will equip more individuals with the training and experience needed to be "industry-ready" and pursue careers in the creative industry including, but not limited to:

Directors and producers • screenwriters • production managers, coordinators and assistants • grips and gaffers • cameramen and film editors • sound and lighting engineers • photographers • graphic designers • fashion and costume designers • visual artists • musicians and composers • actors, dancers and other performing artists • set designers • website and mobile app developers • computer-generated images (CGI) and animation artists • gaming designers, programmers and developers

Kaua'i's talent-rich community is hungry for more opportunities in the creative industries. Creative and digital media activities on the island are growing, and existing programs and facilities are close to bursting at the seams, due to strong interest from youth and adult residents. There are numerous examples of flourishing creative industries programs on the island, indicating readiness and desire for the next level of production capacity. School programs such as the digital media program at Chiefess Kamakahelei Middle School take top honors at national competitions year after year and are known to be among the best programs in the state, on par with the Waianae Seairiders. The nonprofit organization Above Moon Films runs a popular Filmmaker Bootcamp, an intensive filmmaking program where youth ages 12-17 gain the skills to qualify for jobs as professional crew members for feature films on Kaua'i. KEDB together with the Kaua'i Visitors Bureau and County Office of Economic Development executed a highly successful Garden Island Film Festival this past November, featuring three local films as well as three student shorts from Kaua'i Community College's Digital Film/Video curriculum. Hō'ike Community Television's production classes continue to be popular with residents of all ages.

Residents are seeking more training and connections to break into careers in the film industry. As one example, a community event featuring a screening of local short film "The Fishing Club" and a talk story discussion with the director, producer, videographer and editor drew more than 100 people on a weekday evening, many of whom were interested in hearing about potential job opportunities and training in the film industry through the KCTC.

Industry professionals have expressed strong interest in and support for a professional production facility on the island. The KCTC will be a facility designed to accommodate both large-scale and small, independent productions with ease, and will be built to serve the community and the industry in a win-win arrangement.

5. Describe the geographic coverage.

The KCTC will serve industry professionals, students and the community island-wide on Kaua'i. The KCTC will be a hub to provide access for local creators, producers and talent to work with worldwide creative industry professionals.

The facility will be centrally located in Līhu'e, adjacent to the Kaua'i War Memorial Convention Hall, a longtime and beloved community-gathering place and event venue. This location is in close proximity to businesses, government facilities and Kaua'i Community College, and just minutes from the Līhu'e Airport.

The KCTC and the Kaua'i War Memorial Convention Hall are the anchor of the Līhu'e Town Core Mobility and Revitalization Project, which will promote safe mobility and connectivity among the Līhu'e Civic Center, Historic County Building, Līhu'e Ball Fields and Rice Street.

II. Service Summary and Outcomes

The Service Summary shall include a detailed discussion of the applicant's approach to the request. The applicant shall clearly and concisely specify the results, outcomes and measures of effectiveness from this request. The applicant shall:

1. Describe the scope of work, tasks and responsibilities;

The Kaua'i Economic Development Board requests \$2 million to use toward the Kaua'i Creative Technology Center's total construction budget of \$15 million.

The KCTC will be a 30,000-square-foot world-class complex with multi-purpose space for training, filming, editing, performances, lectures, meetings and more. It will include a 10,000-square-foot filming studio with sound insulation, an audio recording studio, professional video editing bays, and video conferencing rooms. Construction plans will enhance the Kaua'i War Memorial Convention Hall's existing loading docks and parking facilities.

KEDB is responsible for oversight of the entire KCTC project. To date, KEDB has:

- Secured a site license agreement with the County of Kaua'i at the rate of \$1/year for 99 years.
- Completed the feasibility study, business plan and conceptual design.
- Contracted Peter Vincent Architects, a Hawai'i based architectural firm, for an environmental narrative and design development to complete the pre-construction phase.
- Established a governance and management plan.

- Engaged the community in the development of the project. Community stakeholders and supporters include, but are not limited to: all four Kaua'i legislators (Senate President Ron Kouchi, Rep. Derek Kawakami, Rep. James Tokioka, Rep. Dee Morikawa), U.S. Sen. Brian Schatz, U.S. Sen. Mazie Hirono, U.S. Rep. Tulsi Gabbard, the unanimous support of the Kaua'i County Council, the County of Kaua'i's Office of Economic Development, Kaua'i Film Commission, Kaua'i Visitors Bureau, Kaua'i Community College, Kaua'i Workforce Investment Board (KWIB), KEDB's Executive Committee, the Kaua'i Chapter of the International Longshore and Warehouse Union (ILWU), the Hawai'i State Department of Education (DOE), and the Hawai'i State Department of Business, Economic Development & Tourism and its Creative Industries Division.
- Secured partial funding from numerous sources. (See section III.3)

During the construction phase, KEDB will:

- Implement governance and management plans.
- Continue to engage the community and seek community input in the development of the project.
- Collaborate with the LThu'e Town Core Mobility and Revitalization Project.
- Define the contractor selection process and select a general contractor.
- Establish payment methods, budget and schedule control methods, submittal approval processes, safety and quality control plans with the selected general contractor.
- Issue a notice to proceed and break ground.
- Secure building materials and begin facility construction.
- Obtain Certificate of Occupancy and closeout documents.
- Prepare to open the facility for community use.

2. Provide a projected annual timeline for accomplishing the results or outcomes of the service;

The construction phase of the KCTC will begin in 2017 and is slated for completion in late 2018, at which time doors will be open and creative technology services will commence.

2016	<ul style="list-style-type: none"> - Complete pre-construction phase: design and environmental assessment and planning - Continue fundraising - Continue to engage community members, stakeholders and strategic partners - Establish governance structure of six committees: Governance, Fundraising, Construction, Film Industry, Training Programs and Facility & Equipment
------	--

2017	<ul style="list-style-type: none"> - Begin construction phase: select a general contractor - Groundbreaking - Continue fundraising - Begin to hire and train appropriate staff - Begin to develop and implement programs for the community
2018	<ul style="list-style-type: none"> - Continue construction phase toward completion - Late 2018: KCTC Grand Opening

3. Describe its quality assurance and evaluation plans for the request. Specify how the applicant plans to monitor, evaluate, and improve their results; and

KEDB will rely on its 30 years of success initiating and managing capital construction projects to continuously monitor, evaluate and improve the KCTC construction process, creating quarterly benchmarks, status reviews and course corrections to ensure the project is completed on time and within budget.

In addition to drawing upon in-house expertise, KEDB will rely on expert consultants and contractors.

Currently, KEDB's consultants for the KCTC project include:

- **Olomana Loomis ISC (OLISC), Lead Project Consultant**
OLISC is a full-service integrated business development and communications firm. Alan Tang, CEO and Chairman, has been directly involved since the 2011-2012 KCTC feasibility study.
- **Peter Vincent Architects (PVA), Environmental Narrative and Design Development**
PVA specializes in design services for new buildings, tenant build-out, remodeling and interior architecture. Peter Vincent, FAIA, is a certified plan examiner and building inspector by the International Conference of Building Officials.
- **Bays Lung Rose & Holma, Legal Counsel**
Hawai'i's leaders in real estate and construction litigation.
- **CW Associates, Accounting & Tax Services**
Specializes in providing accounting and general business consulting services to construction contractors, nonprofit organizations and governmental entities.

Construction services in 2017-2018 will be put out for competitive bid. Whenever possible, KEDB will hire locally throughout the construction phase of the project to ensure funds from the GIA go directly back toward creating new jobs and economic growth on the island.

KEDB's leadership and Executive Committee vet all contracts. All current and future consultants or contractors will be required to produce regular progress reports with their billing statements. Progress reports should provide project status updates on contracted deliverables. Consultants or contractors may be asked to present the status of their deliverables to KEDB's staff, Executive Committee or KCTC's stakeholders.

4. List the measure(s) of effectiveness that will be reported to the State agency through which grant funds are appropriated (the expending agency). The measure(s) will provide a standard and objective way for the State to assess the program's achievement or accomplishment. Please note that if the level of appropriation differs from the amount included in this application that the measure(s) of effectiveness will need to be updated and transmitted to the expending agency.

KEDB will report back to the State expending agency as well as the County of Kaua'i and other funders regarding the progress and completion of the KCTC's construction phase.

These reports will detail:

- established payment methods, budget and schedule control methods, submittal approval processes, safety and quality control plans with selected general contractor
- monies spent against the funding received from the State and against the KCTC's overall construction budget
- grants, major donations and significant in-kind contributions secured toward the construction of the KCTC
- economic stimulus updates, such as direct jobs generation in construction and creative industries
- community engagement, strategic partners and program support and media coverage generated for the KCTC

III. Financial Budget

1. The applicant shall submit a budget utilizing the enclosed budget forms as applicable, to detail the cost of the request.

Please see attached budget sheets.

2. The applicant shall provide its anticipated quarterly funding requests for the fiscal year 2017.

Fiscal Year 2017				
Quarter 1 (July – September) 2016	Quarter 2 (October – December) 2016	Quarter 3 (January –March) 2017	Quarter 4 (April – June) 2017	Total Grant
		\$2,000,000		\$2,000,000

3. The applicant shall provide a listing of all other sources of funding that they are seeking for fiscal year 2017.

The total budget for pre-construction, construction and two years of operation for the KCTC is \$20.5 million. KEDB is seeking funding from public and private sources over the next two years. Our focus in 2016 is on raising the majority of the \$15 million that will be required for construction.

To date, \$960,000 has been secured from:

Hawai'i State Grant in Aid 2015: \$500,000
Kaua'i County Government: \$405,500
First Hawaiian Bank: \$50,000
Hawai'i Gas: \$5,000

Additional funding requests that have been or will be made in fiscal year 2017 surpass \$18 million and include:

Major Donors: \$5,000,000
The Harry & Jeanette Weinberg Foundation: \$4,000,000
U.S. Economic Development Administration: \$4,000,000
W.K. Kellogg Foundation: \$600,000
Ford Foundation: \$500,000
Land Developers \$500,000
MacArthur Foundation: \$500,000
National & International Film Studios: \$500,000
Kresge Foundation: \$450,000
Kaua'i Island Utility Cooperative: \$360,000
Atherton Foundation: \$260,000
National Endowment of the Arts: \$200,000
Project Supporters: \$200,000
Alexander & Baldwin Foundation: \$100,000
Bank of Hawaii Foundation: \$100,000
Cooke Foundation: \$100,000
G.N. Wilcox Trust: \$100,000
Hawaiian Airlines Foundation: \$100,000
Matson Foundation: \$100,000
McInerney Foundation: \$100,000
Strong Foundation: \$100,000
Alaska Airlines Foundation: \$50,000
Grove Farm Foundation: \$50,000
Harold K.L. Castle Foundation: \$50,000
Hau'oli Mau Loa \$50,000
Hawai'i Gas \$50,000
Hawai'i Community Foundation \$40,000
Central Pacific Bank Foundation: \$20,000
King Auto \$20,000
Par Pacific / 76 Hawaii: \$10,000
Saltchuk Foundation: \$10,000

4. The applicant shall provide a listing of all state and federal tax credits it has been granted within the prior three years. Additionally, the applicant shall provide a listing of all state and federal tax credits they have applied for or anticipate applying for pertaining to any capital project, if applicable.

Not applicable

5. The applicant shall provide a listing of all federal, state, and county government contracts and grants it has been and will be receiving for program funding.

See attached "Government Contracts and/or Grants"

6. The applicant shall provide the balance of its unrestricted current assets as of December 31, 2015.

KEDB's unrestricted net assets ending December 31, 2015 is \$1,637,554.09.

IV. Experience and Capability

A. Necessary Skills and Experience

The applicant shall demonstrate that it has the necessary skills, abilities, knowledge of, and experience relating to the request. State your experience and appropriateness for providing the service proposed in this application. The applicant shall also provide a listing of verifiable experience of related projects or contracts for the most recent three years that are pertinent to the request.

KEDB is an established 501(c)3 and has been serving the people of Kaua'i since 1984 . It has a proven track record of developing opportunities for economic diversification and by creating and strengthening industries that will flourish on Kaua'i.

KEDB works closely with the County of Kaua'i Office of Economic Development, as well as with numerous businesses and state and federal government agencies on an array of economic development initiatives. Over the past 30 years, KEDB has successfully initiated and managed dozens of high-impact projects, driving economic growth in various sectors including technology, education, tourism, energy and agriculture.

Since 1999, KEDB has:

- initiated and managed over \$7 million in capital construction projects
- administered program grant appropriations of over \$1.5 million

Over the past three years, KEDB has successfully led and administered multiple economic development projects related to technology, education and innovation. KEDB has:

- continued to develop the Comprehensive Economic Development Strategy (CEDS) for Kaua'i. An updated CEDS report will be published in fiscal year 2016.
- fostered interest in science and math in education by awarding \$157,477 in STEM grants and \$57,000 in Aloha 'Ike grants. Aloha 'Ike programs support 8 schools – elementary, middle and high schools.

- secured additional tenants for the West Kaua'i Technology Center as property manager.
- founded the Kaua'i Coffee Agricultural Business Plan Competition.
- hosted island-wide Summer Student and Teacher Workshops.
- participated in, financially supported, and assisted in marketing efforts for the 1st Kaua'i Student Movie Festival.
- organized two conferences focused on stimulating discussion across various industry clusters.
- participated in a range of statewide conferences exploring renewable energy, food sustainability, the aerospace industry, health and wellness and supporting entrepreneurship in Hawai'i.
- funded \$30,000 to incorporate photovoltaic systems into Kaua'i Community Center Aquaponics Program and other programs – local science fairs, First LEGO league competitions, science shows and expos, Kaua'i Agriculture & Environmental Awareness Days, and financing workshops.
- developed feasibility study and business plan for the Kaua'i Production and Education Center (formerly the Commercial Kitchen Business Incubator) to be established at Kaua'i Community Center campus.
- developed the feasibility study and business plan for the Multi-Species Processing Facility that has been adopted by the private sector for implementation.
- participated in the U.S. Small Business Administration's State, Trade & Export (STEP) business development conference and trade mission in Asia.

This experience, along with KEDB's commitment to serving as a catalyst to develop innovative, effective partnerships with public, private, non-profit, and other community sectors to accomplish shared goals for a strong island economy, makes them an ideal fit to lead the KCTC project.

B. Facilities

The applicant shall provide a description of its facilities and demonstrate its adequacy in relation to the request. If facilities are not presently available, describe plans to secure facilities.

The Kaua'i Creative Technology Center is a unique state-of-the-art facility that will provide much-needed space for creative media, innovation and learning. It will have the facilities, high-tech equipment and technical training and support for projects of all types, sizes and budgets, and high-speed broadband that will provide fast connectivity to the world.

The 30,000-square-foot center will house a multipurpose studio that can be used for filming productions or for theatrical performances or distance learning lectures, complete with video and audio recording capabilities. There will be meeting rooms large enough to hold gatherings of 200 attendees for a seminar or up to a 100 participants for a computer lab. There will also be community videoconference center that will comfortably seat up to 40 attendees.

The KCTC will be located centrally in Līhu'e, adjacent to the Kaua'i War Memorial Convention Hall on Hardy Street. KEDB has secured a 99-year site license agreement at one dollar a year from the County of Kaua'i. The Kaua'i War Memorial Convention Hall has been part of the Līhu'e community since its dedication on December 4, 1964. The facility was designed to serve as a public auditorium and meeting place for the town.

The location was strategically selected to ensure accessibility for the community and to create synergy and partnerships with the Convention Hall, Kaua'i Community College, and other nearby businesses and facilities. The location has ample parking and is in close proximity to businesses and government as well as the Līhu'e Airport.

V. Personnel: Project Organization and Staffing

A. Proposed Staffing, Staff Qualifications, Supervision and Training

The applicant shall describe the proposed staffing pattern and proposed service capacity appropriate for the viability of the request. The applicant shall provide the qualifications and experience of personnel for the request and shall describe its ability to supervise, train and provide administrative direction relative to the request.

Susan Tai Kaneko, President & CEO Kaua'i Economic Development Board

Susan Tai Kaneko recently assumed the role of President & CEO at Kaua'i Economic Development Board (KEDB) where she will lead the organization in its mission to diversify and strengthen Kaua'i's local economy, create jobs for local residents, incentivize innovation and technology, and attract business to Kaua'i and the state of Hawai'i. Before joining KEDB in this new role, Susan served as the Manager of Community Outreach for Syngenta Hawaii LLC in Kekaha, Kaua'i, spearheading Syngenta's community outreach and government relations for its Kaua'i operations while serving on KEDB's executive committee as its second vice chair. Before Syngenta, Susan spent six years as the Director – Kaua'i Economic Development Plan at KEDB, overseeing its initiatives in renewable energy, food and agriculture, and strategic planning. She also managed the development and implementation of the county's ten-year Comprehensive Economic Development Strategy (CEDS) report.

Susan has over 16 years of business development, economic development and consulting experience. Before joining KEDB, Susan was the Director of the Hawai'i Small Business Development Center Network's Kaua'i office (SBDC). Prior to SBDC, Susan also served as the Director of Entrepreneurship Programs, playing a lead role to create what is today the Polsky Center for Entrepreneurship at the University of Chicago Booth Graduate School of Business.

Susan attended the University of Chicago, concentrating in biology and a minor in French. She was a recipient of the 2009 Hawai'i SBA Women in Business Champion and has spoken on panels at events such as the Kaua'i Chamber of Commerce Small Business Expo, Kaua'i Women in Business Roundtable, leadership Kaua'i, TechEnterprise Hawai'i, and Asia Pacific Clean Energy Summit & Expo (APCESE). She has also served or continues to serve on boards

and committees with organizations, including the Kaua'i Medical Clinic Board of Directors, County of Kaua'i Energy Sustainability Plan planning committee, Kaua'i Chamber of Commerce Board of Directors and Government Affairs Committee, Hawai'i Small Business Development Center (SBDC) Network Board, County of Kaua'i Workforce Investment Board, County of Kaua'i General Plan Advisory Committee, County of Kaua'i Affordable Housing Committee, Mayor of Kaua'i's Housing & Traffic Coalition, APCESE Advisory Committee, and Hawai'i Department of Labor Healthcare Skills Panel.

**Marleen Duarte, Executive Administrative Assistant
Kaua'i Economic Development Board**

Marleen Duarte has been employed at Kaua'i Economic Development Board for 16 years, providing administrative and fiscal duties for the organization. For the past three years, Marleen provides on-site bookkeeping duties including maintaining accounting records on QuickBooks software (e.g., accounts receivable and accounts payable). Marleen also prepares monthly invoices, monitoring and maintaining accounting files and processes payroll and payroll liabilities. Marleen also works closely with KEDB's contracted CPA in gathering all financial information for month end bank reconciliations, preparation of general ledger and financial statements each month and gathering all financial information in preparation for year-end audit and other financial related duties that may arise.

**Jaclyn Kaina, Project Manager
Kaua'i Economic Development Board**

Jaclyn Kaina's responsibilities include the Kaua'i Creative Technology Center, the 2016-2020 Kaua'i Comprehensive Economic Development Strategy (CEDS) update, and KEDB's programs and initiatives through its Education, Food & Agriculture and Science & Technology committees. For the past 11 years, Jaclyn has co-owned and managed a full service landscape and tree trimming company, where she managed budget forecasting, goal setting and performance reporting for all accounts; identified strategic partnerships and gathered market information to gain competitive advantages; led new business development; and handled the bookkeeping and daily operations of the company. Concurrently, Jaclyn held a Hawaii State certified Childcare Provider License and performed freelance bookkeeper/accounting services to a small, full service floral shop on Kaua'i.

Jaclyn is an alumna of Kamehameha Schools at Kapālama, Kapi'olani Community College and the University of Hawai'i at Mānoa. Currently, Jaclyn is a Hula Ministry leader at New Hope Kaua'i in Kapa'a, and has been volunteering and serving this fellowship since 2008.

**Alan Tang, Consultant / Project Manager President,
CEO and Chairman, Olomana Loomis ISC**

Alan is an energetic leader and strategist who combines a passion for big-picture thinking and clear, results-driven solutions. His vision for business enterprise, community transformation and leadership development serves as an inspiration for peers and colleagues in Hawai'i and abroad. Alan founded Olomana Marketing in 1996, and his background includes 30 years of expertise in the areas of: community engagement, strategic planning, business development, reputation management, institutional advancement, brand strategy, marketing, advertising, communications, public relations, crisis communications, and nonprofit fund development.

He has worked extensively with leading for-profit and nonprofit organizations in Hawai'i to develop effective brand, marketing, communication, outreach and fundraising campaigns. Alan's diverse industry expertise spans: education, healthcare, financial services, energy, real estate, tourism, retail, arts & culture, human services, technology, and government. He has received recognition for his work from local, national and international organizations.

**Liane Hu, Senior Communications Project Manager
Olomana Loomis ISC**

Liane has been part of Olomana Loomis ISC's core team for KCTC since the first phase of the project, the feasibility study, in 2011-2012. She specializes in economic development, brand, communications and fund development assessments and reports; communications strategy and execution; and public relations. In addition to working on the KCTC, she is also the project lead for the 2016-2020 update of the Kaua'i Comprehensive Economic Development Strategy (CEDS) led by KEDB, and was the project lead for KEDB's feasibility study in 2015 on an arts and culture center for Kaua'i. She has also served clients in fields including education, health care, energy, human services, and public policy, as well as nonprofits.

Prior to joining Olomana Loomis ISC, Liane worked with companies locally, on the mainland and abroad, including Disney Destinations International in London, U.K. and the YWCA in Cambridge, Massachusetts. An 'Iolani School alumna and valedictorian, Liane was a Trustee Scholar at Boston University and graduated summa cum laude with degrees in public relations and English. She is active in the community, and is a former officer of Ad 2 Honolulu and a current member of the Boys and Girls Club of Honolulu Marketing Committee.

**Nālani Blane Kealaiki, Senior Project Manager
Olomana Loomis ISC**

For the past 15 years, Nālani has served as a program manager and administrator with a broad knowledge of project development – from research and analysis to planning and implementation. She is experienced in public affairs, community outreach and events promotions, as well as community-building, and the development of strategic alliances and partnerships.

Most recently, Nālani represented the Blue Zones Project in community meetings with stakeholders, elected officials and employer groups. Before that, she was director of Public Involvement with Parsons Brinckerhoff, where she managed public involvement for the Honolulu Rail project. She developed subcontractor scopes of work contracts and ensured timely communication among executive committee members, department managers and the project director.

Nālani is a board member of Pacific Islanders in Communication (PIC), a Honolulu-based nonprofit that supports, advances and develops Pacific Island media content and culture. She is the chair of PIC's Anniversary Committee, which this year celebrates 25 years of showcasing Pacific Islander heritage in media. Nālani first became involved with PIC as an associate producer in a short film, I Scream, Floats & Sundays, which received the Best Hawai'i Film Award in the 2002 Hawai'i International Film Festival.

Nālani's creative media experience includes working on national and local productions such as the major motion picture Dragonfly, and local organizations Aloha Shoyu and Honolulu on the Move. She is also a past chair for initial planning committees of the short film showcase 'Ohina, and a past fellow of the International Radio & Television Society and First Nations' Future Program.

B. Organization Chart

The applicant shall illustrate the position of each staff and line of responsibility/supervision. If the request is part of a large, multi-purpose organization, include an organization chart that illustrates the placement of this request.

See attached Organization Chart

C. Compensation

The applicant shall provide the annual salaries paid by the applicant to the three highest paid officers, directors, or employees of the organization by position.

Susan Tai Kaneko, President & CEO	\$90,000.00
Marleen Duarte, Executive Administrative Assistant	\$55,986.00
Jaclyn Kaina, Project Manager	\$52,000.00

VI. Other

A. Litigation

The applicant shall disclose any pending litigation to which they are a party, including the disclosure of any outstanding judgement. If applicable, please explain.

Not applicable

B. Licensure or Accreditation

The applicant shall specify any special qualifications, including but not limited to licensure or accreditation that the applicant possesses relevant to this request.

None

C. Private Educational Institutions

The applicant shall specify whether the grant will be used to support or benefit a sectarian or nonsectarian private educational institution. Please see Article X, Section 1, of the State Constitution for the relevance of this question.

Not applicable

D. Future Sustainability Plan

The applicant shall provide a plan for sustaining after fiscal year 2016-17 the activity funded by the grant if the grant of this application is:

- (1) Received by the applicant for fiscal year 2016-17, but
- (2) Not received by the applicant thereafter.

KEDB is actively seeking funds from many public and private sources from 2016-2018 to enable the success of the KCTC project.

The sustainability of the project was a priority in the development of the business plan, and it should be noted that the total project budget of \$20.5 million includes sufficient budget for not only pre-construction and construction, but also the first two years of operations. This two-year timeframe will allow the programs of the KCTC to be firmly established for long-term viability.

Once the KCTC is fully operational, it will be largely self-sustaining through three major sources of revenue, which are, in order from largest to smallest: facility and equipment rentals, earned income from programs, and grants/contributions.

Source: Creative Technology Center Business Plan, Kaua'i Economic Development Board, September 2013.

E. Certificate of Good Standing (If the Applicant is an Organization)

If the applicant is an organization, the applicant shall submit one (1) copy of a certificate of good standing from the Director of Commerce and Consumer Affairs that is dated no earlier than December 1, 2015.

See attached Certificate of Good Standing

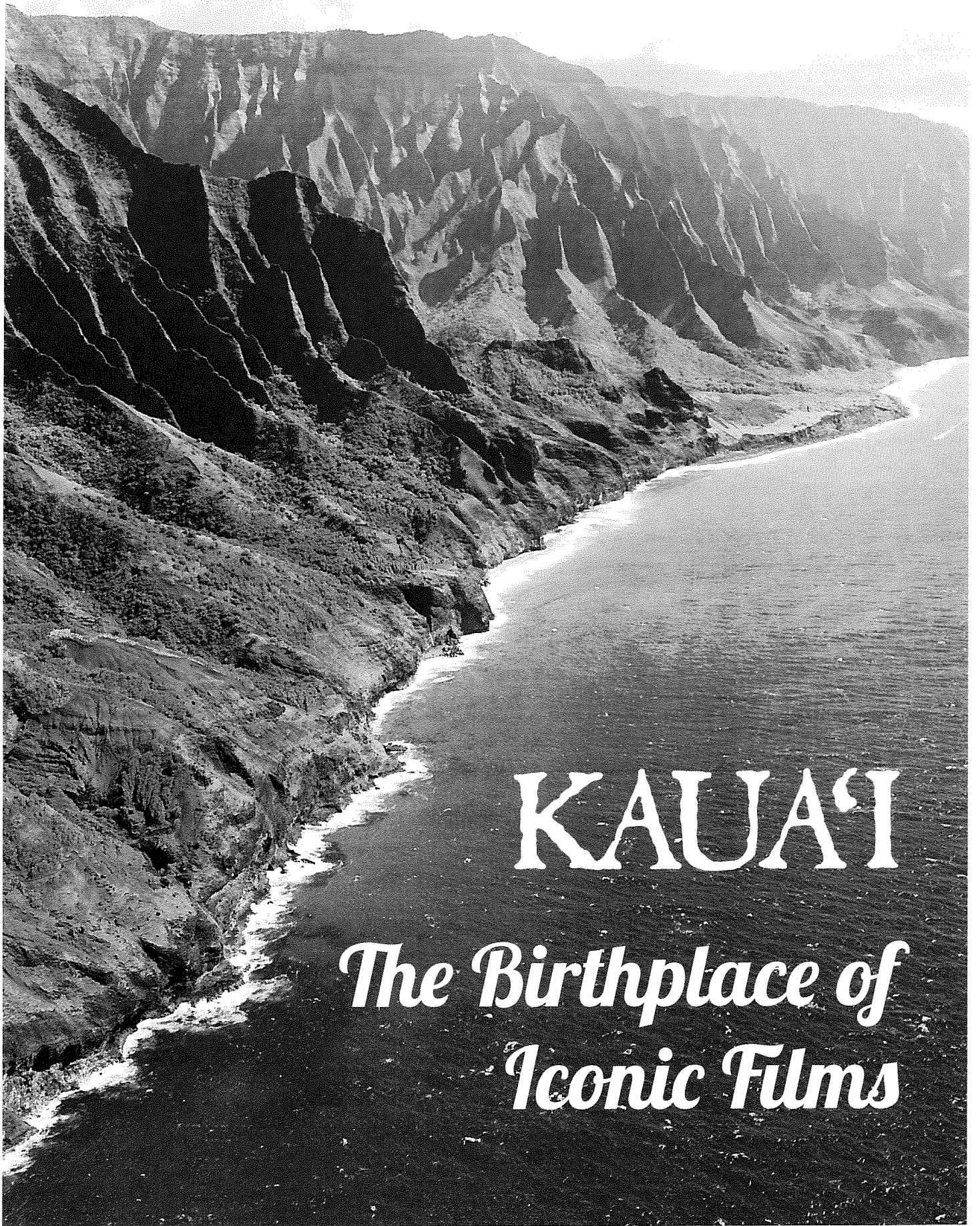
APPENDIX:

- KCTC Viewbook
- KEDB Organization Chart
- KEDB Certificate of Good Standing
- Budget Worksheets
 - Budget Request by Source of Funds, Page 5
 - Budget Justification - Personnel Salaries and Wages, Page 6
 - Budget Justification - Equipment and Motor Vehicle, Page 7
 - Budget Justification - Capital Project Details, Page 8
 - Government Contracts and/or Grants, Page 9
- Declaration Statement of Application for Grants Pursuant to Chapter 42F, Hawai'i Revised Statutes



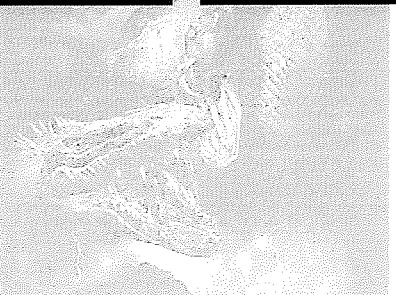
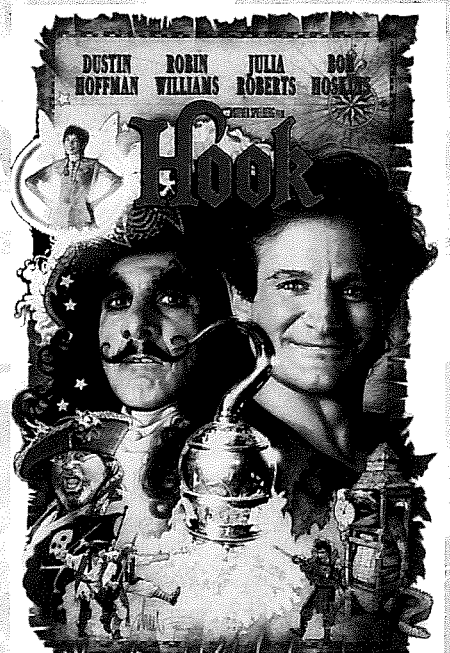
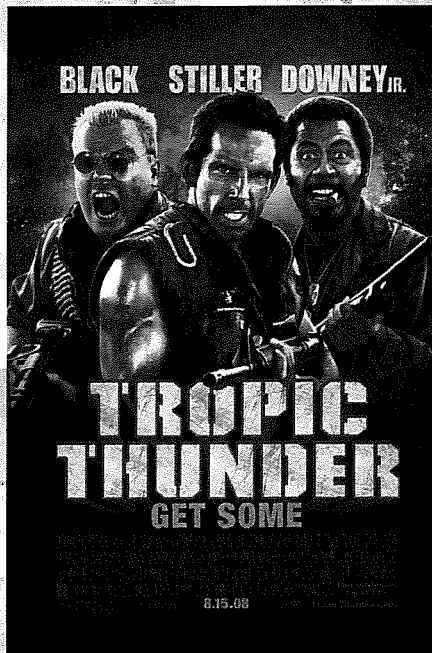
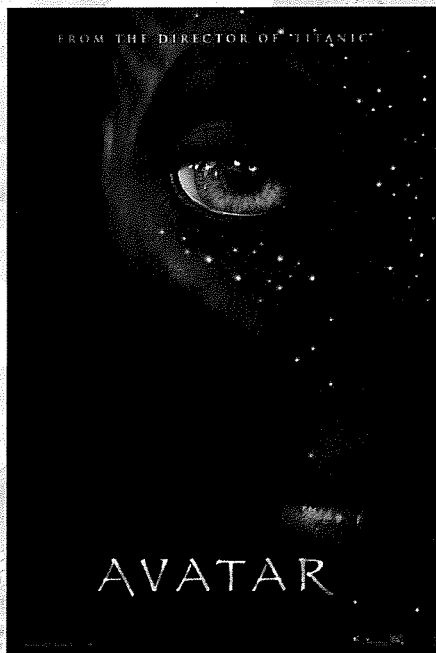
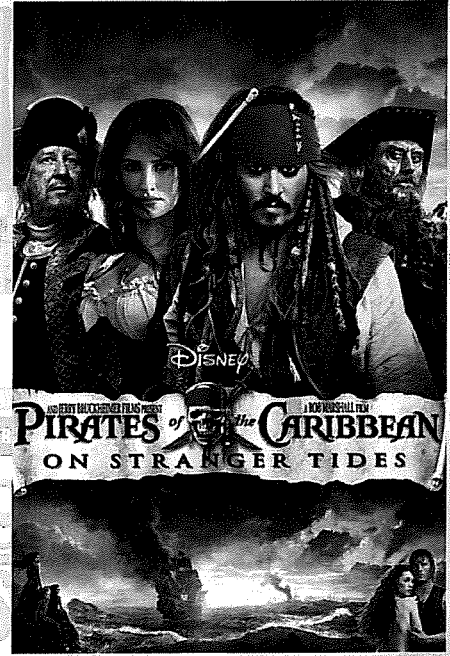
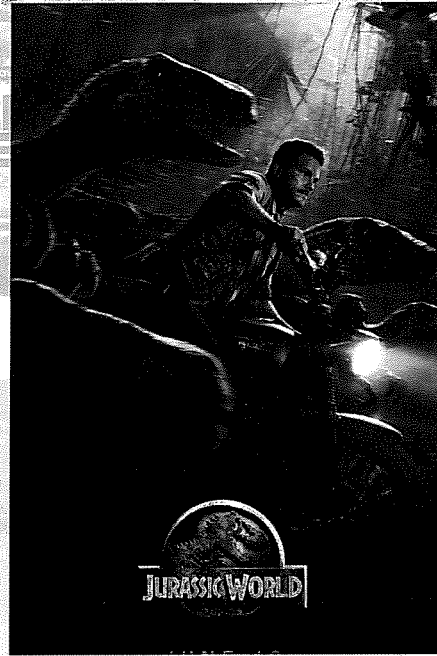
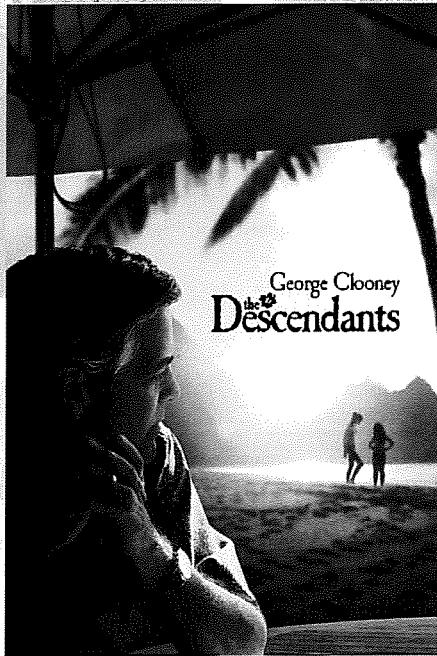
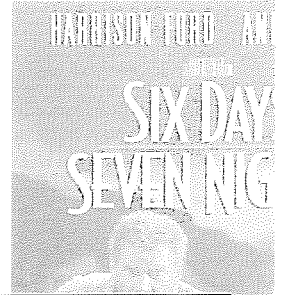
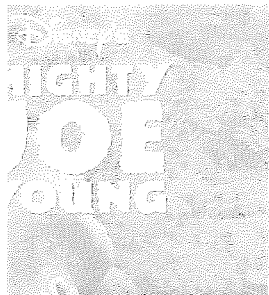
KAUAI

*Blockbuster
Paradise*



KAUA'I

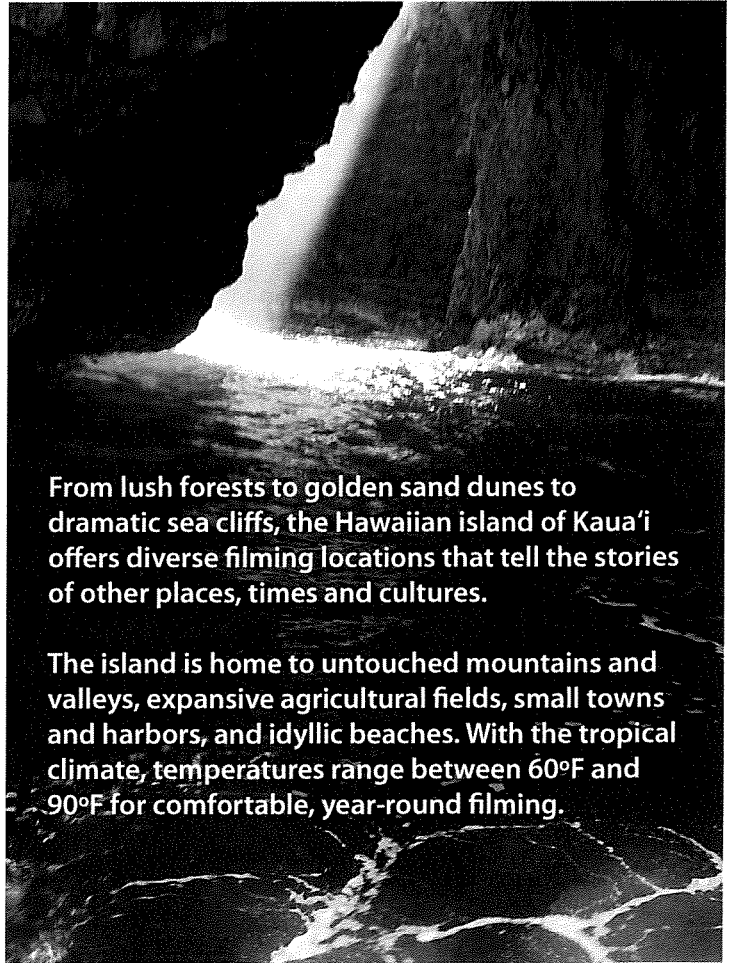
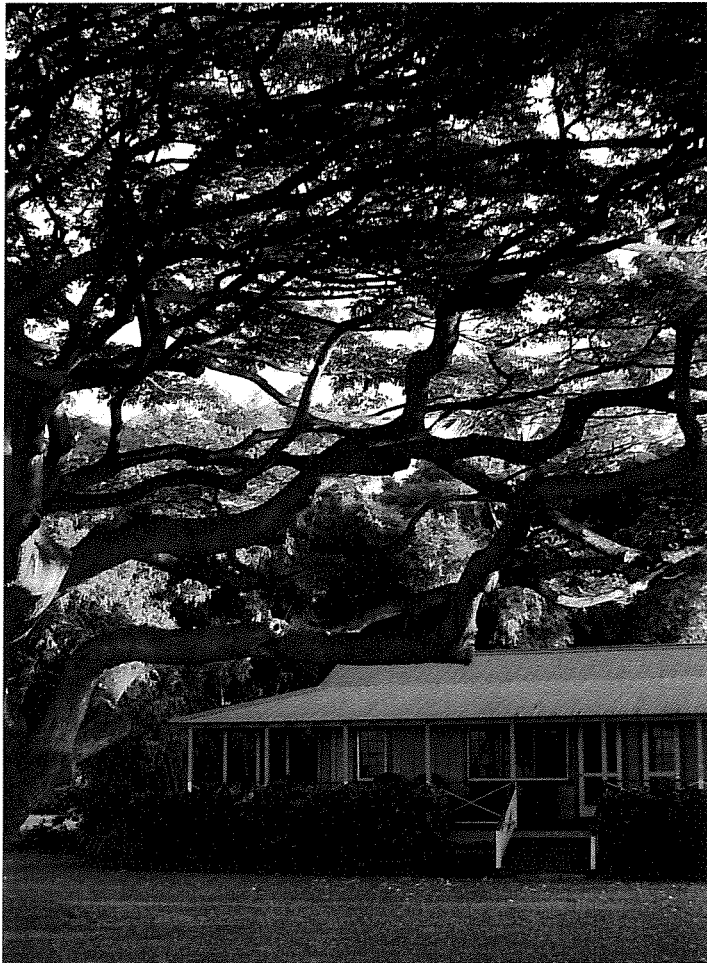
*The Birthplace of
Iconic Films*



George C. Scott
The Sandlot
Islands in the Stream
Bond-remembered Robert Downey Jr. and George Clooney

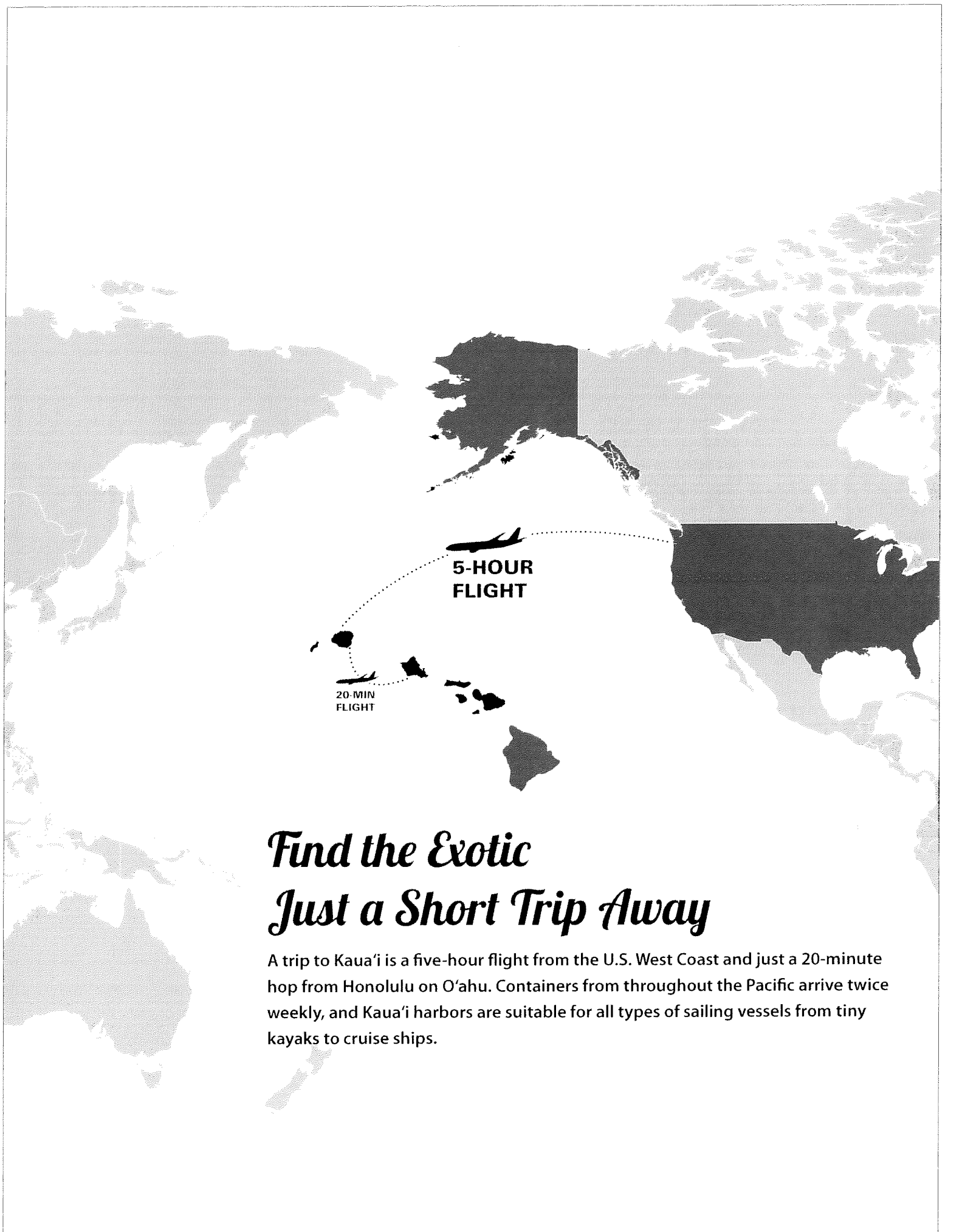


*Tell Your
Story in a
Place That
Defies Time*



From lush forests to golden sand dunes to dramatic sea cliffs, the Hawaiian island of Kaua'i offers diverse filming locations that tell the stories of other places, times and cultures.

The island is home to untouched mountains and valleys, expansive agricultural fields, small towns and harbors, and idyllic beaches. With the tropical climate, temperatures range between 60°F and 90°F for comfortable, year-round filming.



**5-HOUR
FLIGHT**

**20-MIN
FLIGHT**

Find the Exotic Just a Short Trip Away

A trip to Kaua'i is a five-hour flight from the U.S. West Coast and just a 20-minute hop from Honolulu on O'ahu. Containers from throughout the Pacific arrive twice weekly, and Kaua'i harbors are suitable for all types of sailing vessels from tiny kayaks to cruise ships.

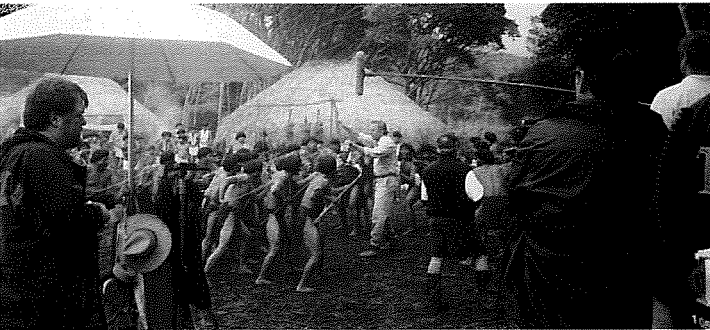
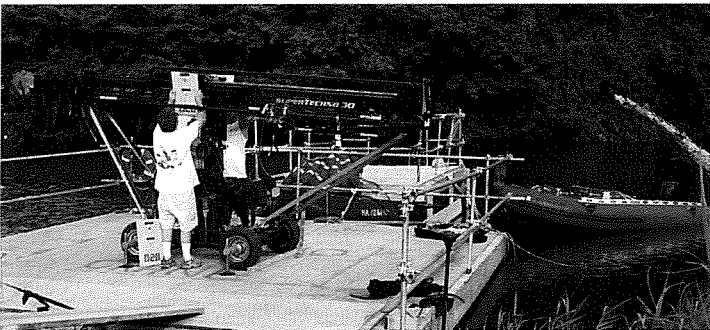
On island, helicopter companies and fixed wing tour companies can ferry film crews to remote locations, and hundreds of miles of private dirt roads crisscross the agricultural lands and back country.

Hotels and catering services in close proximity to film locations make Kaua'i a convenient, comfortable home away from home while your crews work hard to make the magic happen.



Photo credit: Studio Barcelona / Shutterstock.com

Create Your Best Work in a Place Rich in Diversity & Resources



Experienced, professional cinematographers, videographers, underwater photographers, editors, gaffers, grips, production assistants, animal wranglers and other crew are available for

hire on island and throughout Hawai'i. Work with local location scouts and casting agencies to get the right locations, talent and extras.

Coming Soon To An Island Near You!

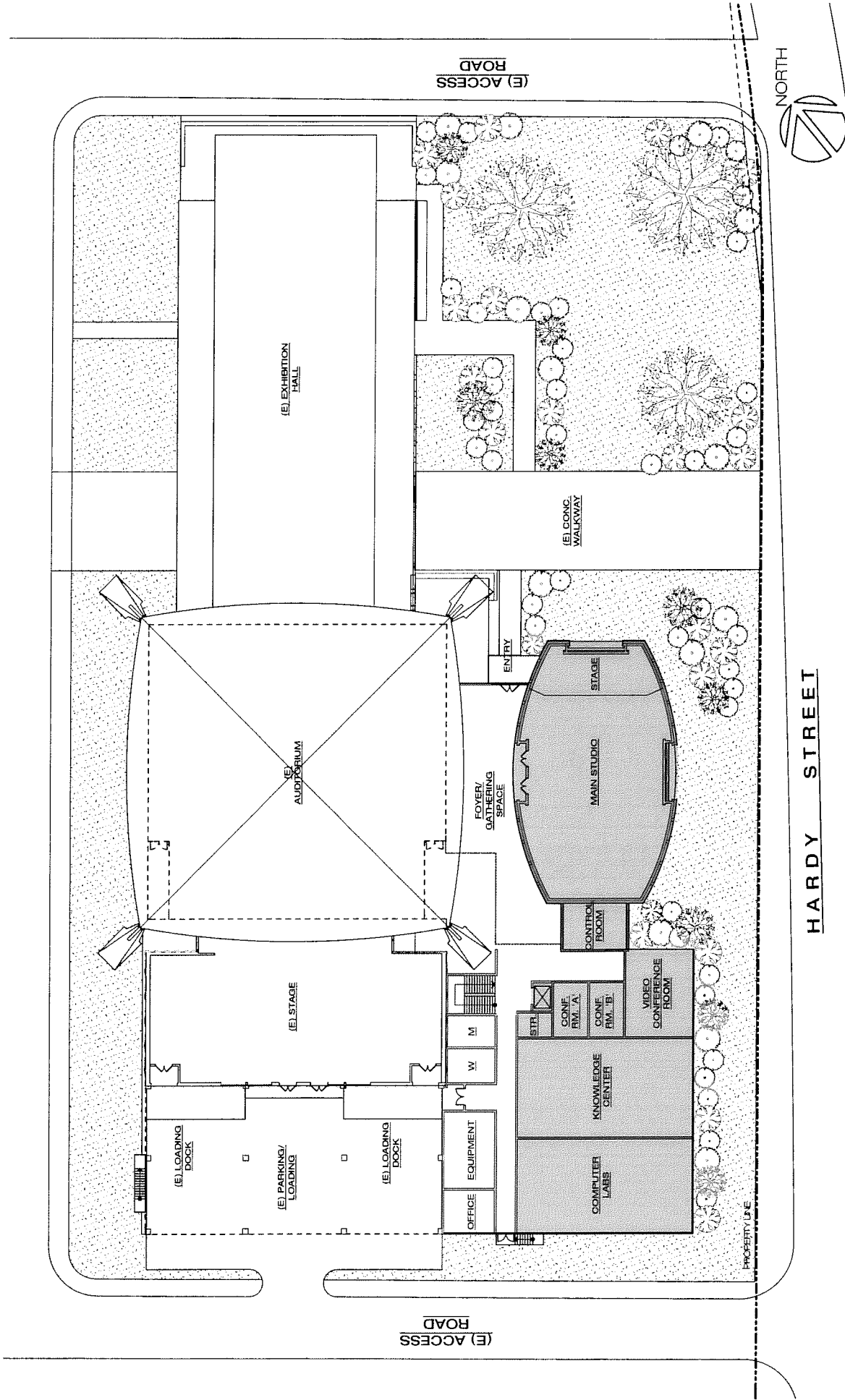
The Kaua'i Creative Technology Center (KCTC), slated to open in late 2018, will house a state-of-the-art film studio, professional edit bays and high-speed broadband Internet. This landmark facility will be located next to the Kaua'i War Memorial Convention Hall in the heart of Lihu'e, near the airport.

It will include office space and facilities to support productions from concept to premiere. The KCTC will also be the premier organization to find the best local talent, on and off camera.



A 30,000-Square-Foot Haven for Inspiration

1ST FLOOR



KAAUI CREATIVE TECHNOLOGY CENTER
 4191 HARDY STREET, LIHUE, HAWAII 96748
 12 December 2014

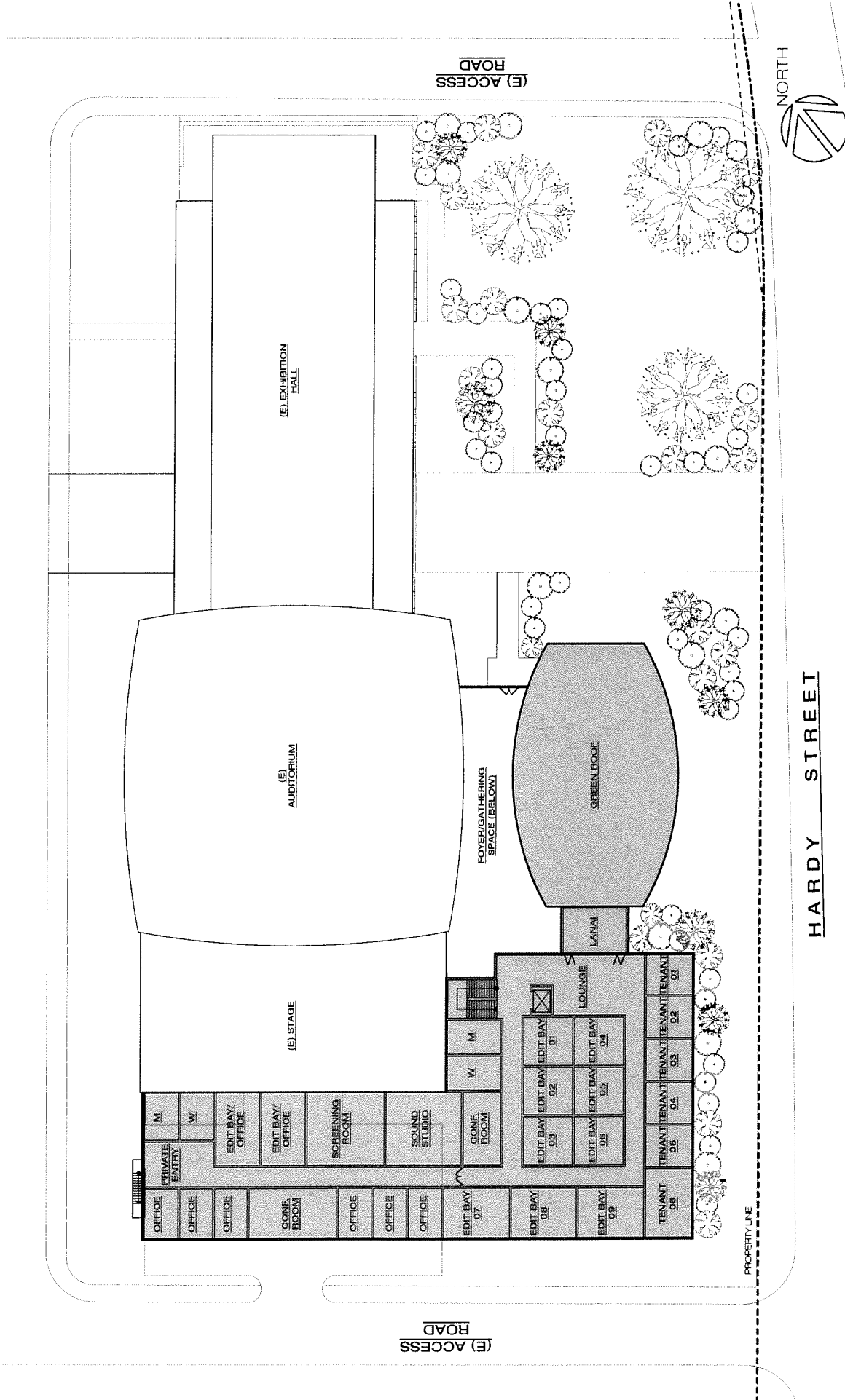
Preliminary First Floor Plan

1001 Ona Street Penthouse Honolulu Hawaii 96817
 T 808.524.8255 F 808.523.3419 E info@pva.com
 www.pva.com

IWA
 peter.vincentarchitects

A 30,000-Square-Foot Haven for Inspiration

2ND FLOOR



KAUAI CREATIVE TECHNOLOGY CENTER
 4101 HARDY STREET, LIHUE, HAWAII 96756
 12 December 2014

Preliminary Second Floor Plan
 12/15/14

1001 Orinik Street Penthouse Honolulu Hawaii 96817
 T 808.534.9255 F 808.533.9419 E info@pva.com
 www.pva.com

IIVA
 petervincenziarchitects



HARDY STREET

A Thousand Possibilities Under One Roof



Sound studio



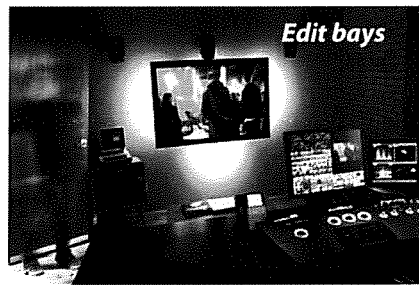
Animation



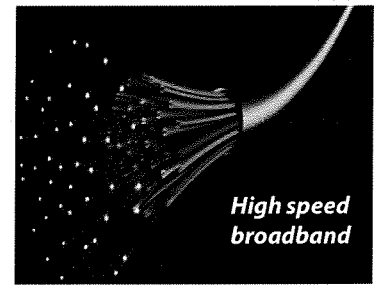
Camera/lighting equipments



Sound studio



Edit bays



High speed broadband



Crew Training



Screening room

Productions will be able to use the Kaua'i Creative Technology Center (KCTC) to augment their filming on Kaua'i and take advantage of production and editing facilities and equipment before leaving the island. The KCTC will include

a 10,000-square-foot filming studio with sound insulation, an audio recording studio, professional video editing bays, offices and video conferencing room. It will be designed to support filmmaking, animation, soundtrack recording, and more.

KAUA'I ECONOMIC DEVELOPMENT BOARD

Susan Tai Kaneko
President & CEO
Business: (808) 245-6692
skaneko@kedb.com

kedb.com

KAUA'I CREATIVE TECHNOLOGY CENTER

Alan Tang
Project Manager
Business: (808) 469-3240
Cell: (808) 261-8412
alan@olomanaloomisisc.com

kauaicreativetechcenter.com

KAUA'I FILM COMMISSION

Randy Francisco
Creative Industries Small Business Coordinator
Business: (808) 241-4953
Cell: (808) 635-4130
rfrancisco@kauai.gov

filmkauai.com



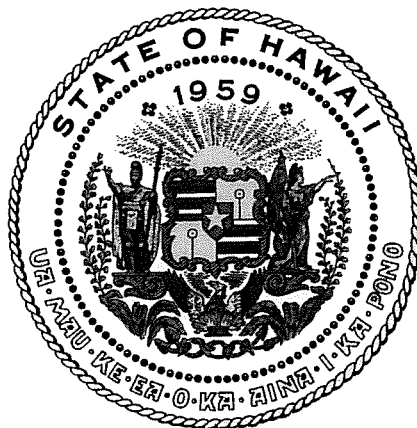
MAUI ECONOMIC DEVELOPMENT BOARD

ORGANIZATION CHART

Susan Tai Kaneko
President & CEO

Marleen Duarte
Executive Administrative
Assistant

Jaclyn Kaina
Project Manager



Department of Commerce and Consumer Affairs

CERTIFICATE OF GOOD STANDING

I, the undersigned Director of Commerce and Consumer Affairs of the State of Hawaii, do hereby certify that

KAUAI ECONOMIC DEVELOPMENT BOARD, INC.

was incorporated under the laws of Hawaii on 10/19/1984 ;
that it is an existing nonprofit corporation; and that,
as far as the records of this Department reveal, has complied
with all of the provisions of the Hawaii Nonprofit Corporations
Act, regulating domestic nonprofit corporations.

IN WITNESS WHEREOF, I have hereunto set
my hand and affixed the seal of the
Department of Commerce and Consumer
Affairs, at Honolulu, Hawaii.

Dated: January 20, 2016



Director of Commerce and Consumer Affairs



BUDGET REQUEST BY SOURCE OF FUNDS

Period: July 1, 2016 to June 30, 2017

Applicant: Kaua'i Economic Development Board

BUDGET CATEGORIES	Total State Funds Requested (a)	Total Federal Funds Requested (b)	Total County Funds Requested (c)	Total Private/Other Funds Requested (d)
A. PERSONNEL COST				
1. Salaries				
2. Payroll Taxes & Assessments				
3. Fringe Benefits				
TOTAL PERSONNEL COST				
B. OTHER CURRENT EXPENSES				
1. Airfare, Inter-Island				
2. Insurance				
3. Lease/Rental of Equipment				
4. Lease/Rental of Space				
5. Staff Training				
6. Supplies				
7. Telecommunication				
8. Utilities				
9				
10				
11				
12				
13				
14				
15				
16				
17				
18				
19				
20				
TOTAL OTHER CURRENT EXPENSES				
C. EQUIPMENT PURCHASES				
D. MOTOR VEHICLE PURCHASES				
E. CAPITAL	2,000,000	4,200,000	0	13,970,000
TOTAL (A+B+C+D+E)				
SOURCES OF FUNDING	Budget Prepared By:			
(a) Total State Funds Requested	Susan Tai Kaneko		(808) 245-6692	
(b) Total Federal Funds Requested	Name: [REDACTED]		Phone	
(c) Total County Funds Requested	Signature of Authorized Official		Date	
(d) Total Private/Other Funds Requested	Susan Tai Kaneko, President & CEO		01/21/16	
TOTAL BUDGET	Name and Title (Please type or print)			

BUDGET JUSTIFICATION - EQUIPMENT AND MOTOR VEHICLES

Period: July 1, 2016 to June 30, 2017

Applicant: Kaua'i Economic Development Board

DESCRIPTION EQUIPMENT	NO. OF ITEMS	COST PER ITEM	TOTAL COST	TOTAL BUDGETED
			\$ -	
			\$ -	
			\$ -	
			\$ -	
			\$ -	
TOTAL:			\$ -	
JUSTIFICATION/COMMENTS: None requested at this time				

DESCRIPTION OF MOTOR VEHICLE	NO. OF VEHICLES	COST PER VEHICLE	TOTAL COST	TOTAL BUDGETED
			\$ -	
			\$ -	
			\$ -	
			\$ -	
			\$ -	
TOTAL:			\$ -	
JUSTIFICATION/COMMENTS: None requested at this time				

BUDGET JUSTIFICATION - CAPITAL PROJECT DETAILS

Period: July 1, 2016 to June 30, 2017

Applicant: Kaua'i Economic Development Board

FUNDING AMOUNT REQUESTED						
TOTAL PROJECT COST	ALL SOURCES OF FUNDS RECEIVED IN PRIOR YEARS		STATE FUNDS REQUESTED	OTHER SOURCES OF FUNDS REQUESTED	FUNDING REQUIRED IN SUCCEEDING YEARS	
	FY: 2014-2015	FY: 2015-2016	FY: 2016-2017	FY: 2016-2017	FY: 2017-2018	FY: 2018-2019
PLANS		960,000*				
LAND ACQUISITION						
DESIGN						
CONSTRUCTION			2,000,000	18,170,000	4,285,000	
EQUIPMENT					3,000,000	
TOTAL:		960,000	2,000,000	18,170,000	7,285,000	
<p>JUSTIFICATION/COMMENTS</p> <p style="text-align: right;">*Total funds secured, not all funds have been released. Note: Current fundraising plan has all funds requested by FY2017.</p>						

GOVERNMENT CONTRACTS AND/OR GRANTS

Applicant: Kaua'i Economic Development Board

	CONTRACT DESCRIPTION	EFFECTIVE DATES	AGENCY	GOVERNMENT ENTITY (U.S. / State / Haw / Hon / Kau / Mau)	CONTRACT VALUE
1.	CEDS Implementation	07/01/15-06/30/16	County of Kauai	Kau	\$50,000
2.	Food Production & Education Center	07/01/15-06/30/16	County of Kauai	Kau	\$50,000
3.	Kauai Creative Technology Center	07/01/15-06/30/16	County of Kauai	Kau	\$75,000
4.	Visitor Center – County Program Enrichment Program	01/01/16-12/31/16	County of Kaua`i	Kau	\$20,000
5.	Kaua`i Energy Conference	07/01/15-06/30/16	County of Kaua`i	Kau	\$10,000
6.	Agricultural Business Plan Competition	07/01/15-06/30/16	County of Kaua`i	Kau	\$15,000
7.					
8.					
9.					
10.					
				TOTAL	\$220,000

1 County of Kaua`i has asked KEDB to implement this project and is currently the contract for KEDB

**DECLARATION STATEMENT OF
APPLICANTS FOR GRANTS PURSUANT TO
CHAPTER 42F, HAWAII REVISED STATUTES**

The undersigned authorized representative of the applicant certifies the following:

- 1) The applicant meets and will comply with all of the following standards for the award of grants pursuant to Section 42F-103, Hawaii Revised Statutes:
 - a) Is licensed or accredited, in accordance with federal, state, or county statutes, rules, or ordinances, to conduct the activities or provide the services for which a grant is awarded;
 - b) Complies with all applicable federal and state laws prohibiting discrimination against any person on the basis of race, color, national origin, religion, creed, sex, age, sexual orientation, or disability;
 - c) Agrees not to use state funds for entertainment or lobbying activities; and
 - d) Allows the state agency to which funds for the grant were appropriated for expenditure, legislative committees and their staff, and the auditor full access to their records, reports, files, and other related documents and information for purposes of monitoring, measuring the effectiveness, and ensuring the proper expenditure of the grant.
- 2) If the applicant is an organization, the applicant meets the following requirements pursuant to Section 42F-103, Hawaii Revised Statutes:
 - a) Is incorporated under the laws of the State; and
 - b) Has bylaws or policies that describe the manner in which the activities or services for which a grant is awarded shall be conducted or provided.
- 3) If the applicant is a non-profit organization, it meets the following requirements pursuant to Section 42F-103, Hawaii Revised Statutes:
 - a) Is determined and designated to be a non-profit organization by the Internal Revenue Service; and
 - b) Has a governing board whose members have no material conflict of interest and serve without compensation.

Pursuant to Section 42F-103, Hawaii Revised Statutes, for grants used for the acquisition of land, when the organization discontinues the activities or services on the land acquired for which the grant was awarded and disposes of the land in fee simple or by lease, the organization shall negotiate with the expending agency for a lump sum or installment repayment to the State of the amount of the grant used for the acquisition of the land.

Further, the undersigned authorized representative certifies that this statement is true and correct to the best of the applicant's knowledge.

Kaua'i Economic Development Board

(Typed Name of Individual or Organization)

(Signature)

(Date)

Susan Tai Kaneko

(Typed Name)

President & CEO

(Title)