

House District 7

Senate District 4

THE TWENTY-EIGHTH LEGISLATURE
APPLICATION FOR GRANTS
CHAPTER 42F, HAWAII REVISED STATUTES

Log No:

For Legislature's Use Only

Type of Grant Request:

GRANT REQUEST – OPERATING

GRANT REQUEST – CAPITAL

"Grant" means an award of state funds by the legislature, by an appropriation to a specified recipient, to support the activities of the recipient and permit the community to benefit from those activities.

"Recipient" means any organization or person receiving a grant.

STATE DEPARTMENT OR AGENCY RELATED TO THIS REQUEST (LEAVE BLANK IF UNKNOWN):

STATE PROGRAM I.D. NO. (LEAVE BLANK IF UNKNOWN):

1. APPLICANT INFORMATION:

Legal Name of Requesting Organization or Individual:
Kahilu Theatre Foundation

Db/a: Kahilu Theatre

Street Address: 67-1186 Lindsey Road, Kamuela, HI 96743

Mailing Address: PO Box 549, Kamuela, HI 96743

2. CONTACT PERSON FOR MATTERS INVOLVING THIS APPLICATION:

Name GRAHAM ELLIS

Title Development Consultant

Phone # 808 885-6868

Fax # 808 885 0546

E-mail graham@kahilutheatre.org

3. TYPE OF BUSINESS ENTITY:

- NON PROFIT CORPORATION INCORPORATED IN HAWAII
- FOR PROFIT CORPORATION INCORPORATED IN HAWAII
- LIMITED LIABILITY COMPANY
- OTHER
- SOLE PROPRIETORSHIP/INDIVIDUAL

6. DESCRIPTIVE TITLE OF APPLICANT'S REQUEST:

EXPANDING KAHILU THEATRE FOUNDATION'S ARTS EDUCATION AND OUTREACH PROGRAMS TO SERVE YOUTH IN NORTH KOHALA.

4. FEDERAL TAX ID #:

5. STATE TAX ID #:

7. AMOUNT OF STATE FUNDS REQUESTED:

FISCAL YEAR 2017: \$ 100,000

8. STATUS OF SERVICE DESCRIBED IN THIS REQUEST:

- NEW SERVICE (PRESENTLY DOES NOT EXIST)
- EXISTING SERVICE (PRESENTLY IN OPERATION)

SPECIFY THE AMOUNT BY SOURCES OF FUNDS AVAILABLE AT THE TIME OF THIS REQUEST:

STATE \$ _____
 FEDERAL \$ _____
 COUNTY \$ _____
 PRIVATE/OTHER \$ _____

MARIE KERLEY, BOARD PRESIDENT

NAME & TITLE

01/20/16

DATE SIGNED



RECEIVED

1/22/16

MA

Application for Grants

I. Background and Summary

1. A brief description of the applicant's background.

Kahilu Theatre Foundation (KTF) is responsible for the operation of Waimea's 490-seat Kahilu Theatre. Since 1981 Kahilu Theatre has provided the residents and visitors of Hawai'i Island with opportunities to experience and participate in a wide array of artistic performances and events, including music, dance, drama, film, and visual arts.

Kahilu Theatre's strategic plan is guided by the vision of making the Kahilu a place where art, community, youth, adults, professional artists and all members of Hawaii Island gather to be inspired, develop their potential through the arts and have a positive impact on their community. The vision is founded on four pillars of activity: presenting world class artists from Hawai'i and around the world; producing our own work with, by, and for our community; emphasizing education programs as THE priority in our vision for the future; and providing a venue for community groups to gather and connect.

Over the 2014-15 fiscal year, KTF served residents and visitors of Hawai'i by presenting 55 performances, among the best in the State and on a national and international level of quality, with many sellout shows and an average of 68% theatre capacity reached at each ticketed show. We offered a greater diversity of programming targeting a broader cross-section of our community than ever before, including more local artists, dancers, and musicians. We have offered more free and affordable programming, with a new tiered ticket pricing system. This includes offering \$20 tickets to every ticketed show, so that families could afford to attend together, making the arts accessible to all in our community. Including free events, Kahilu achieved 23,912 unique experiences in the arts last year. From patron feedback surveys, 90% of patrons rated their experience at Kahilu in the excellent range.

Kahilu Theatre Foundation's education programs extend these opportunities to Hawai'i's *keiki* and adults through extensive educational programming. This educational programming enabled over 7,287 youth and adults during fiscal year 2014-2015 to cultivate an appreciation of the performing, musical, and visual arts, and established the arts as an integral part of lifelong education and thriving community life. These education programs were offered for free or at very affordable rates. They educate and inspire our community's children, exposing our youth to positive role models in various art modalities. Participants in the arts flourish with enhanced creativity, self-expression, and individualism; greater self-confidence; improved problem-solving and critical-thinking skills which carry-over into all world classrooms.

Kahilu Theatre's current education program comprises youth school performances and/or

workshops at Kahilu Theatre and at various school campus, and youth arts classes and camps throughout the year for ages 2-18. During 2015 (which spans our fiscal years 2014-2015 and 2015-2016) and with a total budget of approximately \$180,000, we were able to grow and engage more children in the arts, with the following programs:

YOUTH SHOWS

We offered 16 Youth Shows, where professional artists performed for PreK-12 students at the Theatre with over 6,000 kids attending over the year. During the November 2015 `Ukulele and Slack Key Festival, Kahilu Theatre took 11 artists into 12 local schools in North and West Hawai`i over 2 days and reached over 3,580 students.

K(Arts) AFTERSCHOOL ARTS EDUCATION

For the 7th year and in partnership with Waimea Middle Public Charter School, we provided students with a free after-school arts program, on Wednesday afternoons, providing 8 classes for 90 students during Spring and 110 kids this Fall, culminating in two Finale shows each season attended by students, families and community members.

Students chose from classes in Tahitian Dance, Art, Backstage Production, Hip Hop, Drama, Circus Arts, Hula, African Drumming, and Ukulele Playing. **70%** of the students participating live **below the poverty line** and nearly **20%** come from **migrant** families. In addition to learning new **skills**, K(Arts) builds **focus, friendships** and **self-confidence**.

K(Arts) provides arts education to public school students who would not have access otherwise. As Liberty Givens in 6th grade said, " this is my favorite part of school, I never want to miss Wednesdays."

AFTERSCHOOL CLASSES (PRINCE DANCE INSTITUTE and the SmART Academy)

Each spring and fall Kahilu Theatre presents an extensive program of afterschool dance and performing arts classes at the Theatre. We currently offer 22 arts classes, in hula, hip hop, ballet, acting, trapeze, aerial silks, circus, singing, musical theatre, break-dancing and contemporary dance, for a total of 27 hours a week, to over 120 students (and about 20 adults). We provide full and partial scholarships to 16 of these children in our current session.

SUMMER ARTS

A collaborative program with Lava Roots Performing Arts, in 2015 this 5-week summer program was offered to 60 children from 6-12 years of age. Summer Arts aimed at giving participants an early and dynamic first-hand experience of a liberal arts education, culminating in a free public finale performance. Twenty-three percent of students were on full or partial scholarships.

Keiki Performing Arts Workshop (KPAW)

KPAW, an annual two-week summer musical theatre performing arts camp, serves students from ages 6 to 12, and concludes in a public finale performance. Admission preference is given to "at-risk" youth and those who do not have access to arts education at school.

ART EXHIBITS

Kahilu Theatre has two galleries which are open free of charge daily and are visited by visitors, community members and many schools. The *School to Community* exhibit of keiki art, *Mountain People* exhibit from Nepal, *Big Island Ukulele Guild* exhibit of ukulele, the *Hawaiian Handweavers Hui*, and the *Voyager Exhibit* about the Hokulea's Worldwide Voyage were highlights from this past year.

2. The goals and objectives related to the request. ✓

The Theatre's mission is ***to make a place where community, creativity, and inspiration thrive***. Our Vision is for the Kahilu Theatre to be a flourishing multidisciplinary arts center on Hawaii Island: a place where our community comes together and the arts come alive! Community engagement and educational opportunities are foundational to this mission and vision. Understanding that arts education is essential to the development of a healthy community our 2016-2019 outreach priority focuses on 1) more broadly promoting arts participation and engagement through partnership and collaboration with other organizations, visiting artists and educators and 2) stewarding stronger alliances with all schools in our community.

Goal: We will place learning at the heart of Kahilu Theatre and strive to produce dynamic educational and outreach activities of the highest standard.

Objectives: Understanding that arts education and outreach is essential to the development of a healthy community we will:

- Partner with Kohala Elementary, Middle and High Schools to provide after school performance arts enrichment programs twice weekly during the school year. Twelve classes will be offered each week serving about 120 students.
- Partner with the Kohala Village HUB to provide spring and summer camps serving 120 students from Kohala Elementary, Middle and High Schools and homeschool programs. Camp activities will focus on three threads of learning: Earth Conscious Performing Arts, Eco Arts, and Farming to Food Arts. The intent is to inspire healthy and sustainable community practices and future educational and economic opportunities in Culinary Arts and Hospitality, Agriculture and Resource Management, Performing Arts and Dance, Fine Arts and Fashion and Design.
- Provide subsidies for 1,500 student visits from Kohala Elementary, Middle and High Schools and homeschool programs to attend Youth Show

performances at Kahilu Theatre. These shows are presented by world class artists in music, dance and theatre providing rural students with a rare opportunity to experience live cultural performances of this caliber.

- Provide at least 6 FREE outreach performances and/or workshops at the three Kohala school campuses presented by leading Hawaiian artists.
- Develop a performance arts showcase troupe to provide a pool of 60 students with opportunities to perform in at least 20 community shows and parades in 2016-17.

Goal: In partnership with North Kohala public schools, community organizations and substance abuse prevention programs we will provide local 'at risk' students with the most up-to-date, positive alternatives to drug use and other harmful activities.

Objectives: Understanding that arts education and outreach is a valuable tool for keeping North Kohala keiki safe from drug use we will:

- Meet monthly with school principals and counselors to include their input in the design and implementation of our programs.
- Utilize the experience and expertise of the Kohala Coalition Against Drugs by hiring one of their staff as a consultant for our program
- Distribute educational information to all program participants regarding teenage substance use and abuse in conjunction with the North Kohala Lokahi Treatment Center and the Prevention Plus organization.
- We will hire a substance abuse specialist with more than 20 years experience to incorporate the most up-to-date, science-based information encouraging healthy, sensible choices into our program.

Making education and outreach programs THE priority in our vision for the future will establish Kahilu as an arts center serving generations of families. KTF's educational goal is to provide programs that encourage growth in youth and adults, cultivate appreciation of the performing, musical, and visual arts, and make the arts an integral part of school and family life. In 2016-17, we aim to increase the community we serve to 12,500 youth, with 60% of the youth served being at-risk, from intergenerational or low-income families. This means making KTF's education and outreach programs affordable and providing positive role models and educational opportunities for youth and families.

Research has proven that engaging youth and their families in the arts cultivates thriving, creative and inspired members of society. At Kahilu, we want to see all members of our community engaged and stimulated by our diverse and quality programming, appealing to a variety of tastes and backgrounds.

3. The public purpose and need to be served.

Kahilu Theatre is located in the rural district of North Kohala. Diverse ethnicities are represented in the district, including Caucasian, Filipino, Japanese, Native Hawaiian and other Pacific Islanders, with many single-parent and multi-generational families. While median household income is \$53,600, there is a significant disparity in income levels. Almost 16% of island residents live below the poverty level.

Many of the keiki in the Kohala School Complex are considered "at risk". The most current data reflects a student population comprised of over 41% Hawaiian ancestry and 25% Filipino ancestry and Caucasians at 16%. The economic upturn in the State of Hawaii seems to be delayed in North Kohala where 69% of the students receive free or reduced lunch. U.S. Census data shows 18.3% of Hawaii County population live below the poverty level compared with a Statewide average of 11.2%. Unemployment in the County of Hawaii is 4.2% while the State average is 3.7%. Native Hawaiians, as a group show lower college going rates and has been declining over the last two years.

In North Kohala, the Lokahi Treatment Center estimates that, in addition to other drug related issues, "1 in 5 families have meth abuse within the household. This cycle can include grandparents, parents and children. It is not uncommon to see a mother as a meth user with 3 or 4 of her children also using. Additionally, 2 to 3 families may be living within the same household, although there are no hard statistics for this number. Now local students are reporting that meth is being used by children within our middle school and high schools."

According to Kohala Hospital administrators, since January 2015 there has been at least one patient treated in their emergency room for meth overdose each month and that the patients have been between 20-30 years old and from the local population.

In terms of the State of Hawaii the Hawaii Meth Project reports the following statistics on meth use:

- In 2013, 61 of Hawaii's 120 drug-related deaths were associated with methamphetamine.
- Estimated cost of meth abuse in Hawaii is \$500 million annually for incarceration, foster care, healthcare, lost employee productivity and treatment.
- Hawaii ranks #1 in the nation for the percentage of drug-related treatment admissions that are meth related.
- Hawaii ranks fourth in the nation for meth-related crimes.
- Hawaii ranks fifth in the nation for meth use by 12 year old and older persons.

- Hawaii ranks 410% greater than the national average for positive methamphetamine workplace drug testing.
- 90% of federal sentenced drug cases in Hawaii involve meth.
- 80% of violent crimes and domestic abuse are related to meth abuse.
- Native Hawaiians and Native Americans are among the ethnicities with the highest prevalence of meth use in the nation.
- Meth poses the greatest drug threat to Hawaii due to its association with violent crimes, theft and wide spread availability.
- 60% of juveniles rearrested admit to using hard drugs.

In dealing with such endemic drug abuse problems industry 'best practice activities' indicate that early intervention produces the most positive results. This is currently the focus for North Kohala organization working together to tackle this devastating community health issue. Engaging our students in positive out of school activities is the primary goal for agencies working to change these statistics and our program has been highlighted as a priority.

In the past due to budgetary constraints our North Kohala schools have been very limited in their ability to offering arts education. Therefore many youth within our community have not had the experience of exploring various art genres (visual, performing, dance and movement, music).

National studies show that engagement in the arts has a tremendous impact on the developmental growth of every child, reducing their vulnerability to drug use, and has proven to help level the "learning field" across socio-economic boundaries by strengthening critical-thinking, cognitive and creative skills. Children who are involved in the arts are:

- 4 times more likely to be recognized for academic achievement
- 3 times more likely to be elected to class office within their schools
- 4 times more likely to participate in a math and science fair
- 3 times more likely to win an award for school attendance

Through the arts, students nurture important values including team-building skills, respecting alternative viewpoints, and appreciating and being aware of different cultures and traditions. The community benefits because youth who have a history of in-depth arts involvement have better academic outcomes, higher career goals, and are more civically-minded, according to a report entitled *The Arts and Achievement in At-Risk Youth: Findings from Four Longitudinal Studies (NEA 2012)*.

For these reasons, it is a priority of the Kahilu Theatre Foundation to expand and enhance the youth arts experiences it offers, so that more of our *keiki* can be guided, mentored and inspired in a variety of art modalities, including dance, voice, theater, and visual arts.

4. The target population to be served.

This program will offer quality arts experiences to the 810 children, K-12 attending the three public schools located in Hawi and Kapa'au North Kohala and 212 homeschooled students living in that part of North Kohala. Enrollment for the school year 2015-2016 totals 402 in Kohala Elementary, 178 in Kohala Middle and 276 in Kohala High School. Students identify primarily as Hispanic, Multiracial, and Native Hawaiian or Other Pacific Islander and 65% of them receive subsidized lunches.

The schools are situated on the northernmost coast of the island of Hawaii in the district of North Kohala. They serve a rural community of approximately 6,300 people in 2,242 households. There are no other schools within a radius of 25 miles. Many families in the community work in the hotel and tourism industry and commute long distances daily. A major obstacle for providing services to residents of North Kohala results from its isolation. There are only two roads leading in and out of the area and extremely limited public transit. Most of the comprehensive services serving society are located 40 to 60 miles away.

5. Describe the geographic coverage.

Through its expanded youth performances, afterschool arts program and school break camps Kahilu Theatre Foundation will target students from the greater North Kohala District primarily Hawi and Kapa'au.

II. Service Summary and Outcomes

The Service Summary shall include a detailed discussion of the applicant's approach to the request. The applicant shall clearly and concisely specify the results, outcomes, and measures of effectiveness from this request. The applicant shall:

1. Describe the scope of work, tasks and responsibilities;

This program will expand the arts education services we provide to students in the Hawi and Kapa'au area of our district and support school and community efforts to promote academic excellence and reduce the drug abuse and other societal issues adversely affecting the target population. Kahilu Theatre resources and experience will be utilized to significantly increase youth access to arts education programs and to expose more *keiki* in North Kohala to a wide range of art modalities. We will be working with three public schools, the homeschool association, the North Kohala Community Resource Centre, the Kohala Village HUB, the Lokahi Treatment Center and several other local organizations.

Throughout the course of this program we will be working closely with staff at the Kohala Village HUB, training them in the roles and responsibilities involved in running the program. Our intention is to build a competent local team of administrators and arts instructors who can continue this program after this phase of the program ends. We plan to build sustainability and local control into the program from its onset.

With this application, Kahilu Theatre Foundation is seeking support for four components of our Kohala outreach educational program:

1. Increase access to more Youth Shows.

The cost of show tickets and transport presently restricts the numbers of Kohala students able to attend Kahilu's enrichment Youth Shows. Through subsidies provided by this program ticket prices will be reduced to \$1 per student per show enabling 1,200 students from Kohala Elementary, Middle and High Schools and homeschool programs to attend Youth Show performances at Kahilu Theatre. These shows are presented by world class artists in music, dance and theatre providing rural students with a rare opportunity to experience live cultural performances of this caliber.

Kahilu Theatre Foundation has increased its youth performances at Kahilu Theatre from 12 in 2014/15 to more than 22 in 2016/17 with artists representing a wide range of artistic genres. This requires KTF to contract with visiting artists to undertake 1 or more youth shows in addition to their public performances and increases costs.

These Theatre performances are very popular with youth ages 5-18 from public and private schools, as well as homeschoolers, from the greater North Hawaii region. Youth school performances are usually very interactive, with artists engaging the students with question and answers, demonstrations, and sometimes even bringing students onto the stage to participate in educational activities. Kahilu Theatre is abuzz with youthful energy on youth show days!

Hawai'i Island schools bus their students to the Theatre for these performances. For some public schools, providing this transportation for their students is not included in their annual budgets. Part of our funding request will help support transporting children from public schools in Kohala the Theatre in Waimea by reducing the fee for the show from \$4 to \$1 per student.

Our goal for 2016-2017 is to have each student from the North Kohala schools attend at least two shows in the year for a total of more than 1,500 student visits.

KTF will also provide at least 6 outreach performances and/or workshops at the three Kohala school campuses presented by leading artists participating in our annual 'Waimea Ukulele and Slack Key Guitar Festival'. This involves transporting artists, our tech staff and

equipment to the schools and will be more effectively and efficiently facilitated through the use of the van requested in this proposal.

2. Expand Kahilu Theatre's Afterschool Arts Program to Kohala Schools

Partner with Kohala Elementary, Middle and High Schools to provide after school performance arts enrichment programs twice weekly during the school year. Twelve classes will be offered each week serving about 120 students each session.

Kahilu Theatre's free afterschool K(Arts) program in conjunction with Waimea Middle School since 2007 has been extremely successful in bringing arts education to underserved, "at risk" children in our community. Waimea Middle School reports that the youth involved in K(Arts) have improved school attendance and grades, because of this involvement! The kids are eager participants, and develop self-esteem, cultural awareness, and empowerment, as well as leadership skills.

With this new proposal, we seek to expand this program to serve North Kohala School students living in an undisputed underserved, rural community within our geographic area at no cost to families.

The three Kohala Schools with an enrollment of approximately 780 students have 70% of students receiving free or reduced-cost lunch with 42% Native Hawaiian, and reading, math and science assessment results below state averages.

We propose to bring six arts teachers into the school to conduct free afterschool classes for 120 students two days per week for 11-12 week Spring and Fall sessions, each culminating in a community performance at Kahilu Theatre. Instructional staff will be artists who are experienced educators. In the first year, KTF will provide classes in areas such as drama, dance, creative movement, circus arts and music. Specific classes will be determined in coordination with Kohala School staff. Students will be able to choose 2 of the 6 class options each session. They will spend the first 1-1/2 hours each week in one class and the second 1-1/2 hours in the other. KTF will work with the school administration to ensure that students participating in the afterschool program are provided transportation home.

3. Partner with the Kohala Village HUB to provide spring and summer camps

Each camp will serve 60 students from Kohala Elementary, Middle and High Schools and homeschool programs. Camp activities will focus on three threads of learning: Earth Conscious Performing Arts, Eco Arts, and Farming to Food Arts. The intent is to inspire healthy and sustainable community practices and future educational and economic opportunities in Culinary Arts and Hospitality, Agriculture and Resource Management, Performing Arts and Dance, Fine Arts and Fashion and Design. Each camp program will conclude with a finale performance attended by parents, community members

4. **Develop a performance arts showcase troupe**

We aim to provide a pool of 60 students with opportunities to perform in at least 20 community shows and parades in 2016-17. Arts instructors will work with selected students at the Kahilu Theatre at a special weekly class. The focus of this advanced group is to develop acts and routines to present to audiences in schools and at community events throughout the island. The van included in the budget plan would be used (to drive arts instructors to Kohala for weekly classes) and also to transport students to performance arts showcase classes in Waimea and to performance and parade locations. The roof rack on the van will be used to transport equipment needed for the community shows.

2. Projected annual timeline for accomplishing the results or outcomes of the service.

TASKS AND ACTIVITIES/ JULY 2016-JULY 2017	J	A	S	O	N	D	J	F	M	A	M	J	J
Youth School Performances			X	X	X	X	X	X	X	X	X		
Expand K(Arts) to three Kohala Schools													
coordinate with KMS staff in developing the program	X	X											
hire instructional staff	X	X											
conduct Fall session, culminating in performance			X	X	X			X	X	X			
conduct Spring session, culminating in performance													
Spring and Summer Arts Camps	X								X				
Performance arts Showcase troupe	X	X	X	X	X	X	X	X	X	X	X	X	X
Consult with substance abuse experts and schools	X	X	X	X	X	X	X	X	X	X	X	X	X

3. The quality assurance and evaluation plans for this request.

1. The quality of **Youth Shows** presented by the Kahilu Theatre will be monitored and improved through on-site evaluations by the KTF’s Artistic Director, discussion of debrief and improvement at weekly operations meetings, with staff and volunteers, and the Artistic Director’s monthly report to the Board of Directors. Counts of sign-ups and actual participation from Kohala Complex Schools will be taken for every youth show through an online system and manually at check-in at the show. The Artistic Director will also have open communications streams with

teachers, administrators and parents who organize Youth Shows, to ensure feedback is collected and necessary improvements are made.

2. **Expanding Kahilu Theatre's Afterschool Arts Program** to Kohala Schools will be evaluated by student attendance in the program and at school. This will be collected by the arts instructor and school office administration. Success will be measured qualitatively through feedback on surveys distributed to students, parents, and instructors following the program. The objectives of the program including responses to substance abuse and social stress issues will also be monitored through students' school attendance records and grades.
3. **Partnering with the Kohala Village HUB to provide spring and summer camps** will be evaluated by student attendance in the program and will be collected by the arts instructor and HUB office administration. Success will be measured qualitatively through feedback on surveys distributed to students, parents, and instructors following the program.
4. The quality of the **performance arts showcase troupe** will be measured by the numbers participating and the numbers of performances in community shows and parades.
5. The evaluation of the **substance abuse reduction** part of the program will be measured by the expert consultant hired to advise and guide these aspects the program.

4. The measure(s) of effectiveness to be reported to the State agency through which grant funds are appropriated (the expending agency).

1. The effectiveness of **Youth Shows** will be quantitatively evaluated by the number of Kohala School youth attending Youth Shows. Our goal is to have 1,500 Kohala students visits to our Youth Shows in FY 2017.
2. The effectiveness of **Expanding Kahilu Theatre's Afterschool Arts Program to Kohala Schools** will be measured the number of students who sign up for and attend all 11 weeks of each semester. Our goal is to have 120 students participate in each semester session.
3. The effectiveness of the **Spring and Summer Camps** will be measured by the numbers of students attending, our goal is 60 students at each camp.

4. The effectiveness of the **Performance troupe** will be measured by attendance at training classes and community performances. We aim for 60 students performing at 20 community events during the year.
5. The effectiveness of the **substance abuse reduction** elements of the program will be determined by questionnaires completed by school administrators and teachers following each program session and will include data input from the North Kohala Hospital and the Lokahi Treatment Center.

III. Financial

Budget

1. The applicant shall submit a budget utilizing the enclosed budget forms as applicable, to detail the cost of the request.
2. The applicant shall provide its anticipated quarterly funding requests for the fiscal year 2017.

Quarter 1	Quarter 2	Quarter 3	Quarter 4	Total Grant
	50,000	25,000	25,000	100,000

3. Other sources of funding we are seeking for fiscal year 2017.

Private Donations and Corporate Sponsors
 Ticket Sales and Program Tuition
 National Endowment for the Arts
 WESTAF
 State Foundation on Culture and the Arts
 Hawai'i Tourism Authority
 HTA County Product Enrichment Program
 Hawai'i Community Foundation FLEX Grant
 Family Foundations (e.g., Atherton, O'Neill, etc.)

4. The applicant shall provide a listing of all state and federal tax credits it has been granted within the prior three years. Additionally, the applicant shall provide a listing of all state and federal tax credits they have applied for or anticipate applying for pertaining to any capital project, if applicable.

N/A

5. The applicant has not and will not be receiving for program funding for this project from any government contracts and grants.

6. The balance of KTF unrestricted current assets as of 06/30/15.
\$379,069

IV. Experience and Capability

A. Necessary Skills and Experience

Kahilu Theatre Foundation (KTF) was incorporated in 1980 as a 501(c)(3) not-for-profit organization and has been responsible for the operation of Kahilu Theatre since it was built in 1981. KTF has since overseen 34 years of successful artistic and educational programming, with an annual budget expanding to \$1.5 million.

Today, Kahilu Theatre is an arts center dedicated to making a place where community, creativity and inspiration thrive. We do this by presenting outstanding performing and visual arts, educating youth and adults in the arts, and providing a venue for community artists and other groups to gather and perform for the visitors and residents of Hawaii Island. The majority of the communities we serve come from the North Hawaii, North Kona, and Hamakua districts of the Island. We serve all ages, from children to adult. Kahilu Theatre seats 490 people and is the largest and principal arts center in North and West Hawaii. In recent years, we have averaged 18 performances per year in its presenting season, serving an average of 22,130 residents and visitors annually.

Kahilu Theatre Foundation's (KTF) education programs include youth afterschool and summer arts programs, live performances for youth at the theatre and at schools, classes for adults, and free arts events giving youth and adults the opportunity to engage and prosper in and through the arts. The majority of our education programs are comprised of youth ages 3-18 from the North Hawaii and Hamakua areas. Youth education programs comprise 20% of our annual operating budget, bringing quality arts experiences to an underserved rural area.

One of our most successful education programs is K(Arts) an Afterschool Arts Program, that is run in collaboration with Waimea Middle Public Conversion Charter School (WMPCCS) for the past 6 years, for 10 weeks in both the Fall and Spring. It offers six free afterschool classes to more than 100 middle school students in the arts, in the areas of cultural dance, music, studio art, and theatre and culminates with two free public performances attended by over 500 students and community members.

B. Facilities

Kohala Complex Schools – our program will use school classrooms and the gymnasium, whichever is most appropriate for particular arts programs.

Kahilu Theatre – Program participants will be offered the opportunity to join the SmArt Showcase troupe which rehearses in Kahilu’s Studio space (300 sq ft) and performs in the 490 seat auditorium as well as at community events.

Kohala Village HUB has a dance class facility (100 sq ft), smaller rooms for other classes and a 60 seat theatre with a stage suitable for rehearsing shows and performing to small audiences.

V. Personnel: Project Organization and Staffing

A. Proposed Staffing, Staff Qualifications, Supervision and Training

Leading the team at Kahilu Theatre since August 2015 is Executive Director Deborah Goodwin, who brings to Kahilu an extensive background in non-profit management having served organizations including the Nature Conservancy, Oceanic Institute, W. M. Keck Observatory, Parker School, Humboldt State University, Humboldt Arts Council, and the Morris Graves Museum of Art.

Artistic Director since 2013, Tim Bostock, has been promoting live arts events for over 30 years. His past projects include six years of Live from the Lawn concerts at the Hawaii State Arts Museum and downtown Honolulu street festivals, such as Mardi Gras and Cinco de Mayo. Tim was also a founding partner of the ARTS at Marks Garage, Honolulu and Director of Celebratory Arts Company in the U.K.

Alva Kamalani oversees all operations as Operations Manager for Kahilu. An accomplished Kumu Hula, Alva started at Kahilu Theatre as a part-time Events Manager in 2004 and since 2006 has been our fulltime director.

Paul Buckley is the Theatre Technical Director, coordinating the backstage team and maintaining the overall function of facilities. Paul is the owner of Waimea Music Center, which has been in operation for over 20 years. Waimea Music Center provides the in-house audio visual, technical and logistical support to all productions.

Dena Smith Ellis and Graham Ellis form our Development team. Dena has served as Advertising Manager for La Leche League International, Secretary of the Board of the Hawaii Sustainable Community Alliance, and President of the Unitarian Universalists of Puna and is also a freelance writer, editor, motivational speaker, and health coach. As the former Executive Director and then Board Chair of Hawaii's Volcano Circus, Graham has successfully directed community arts festivals and raised funds to support arts education programs for over 25 years.

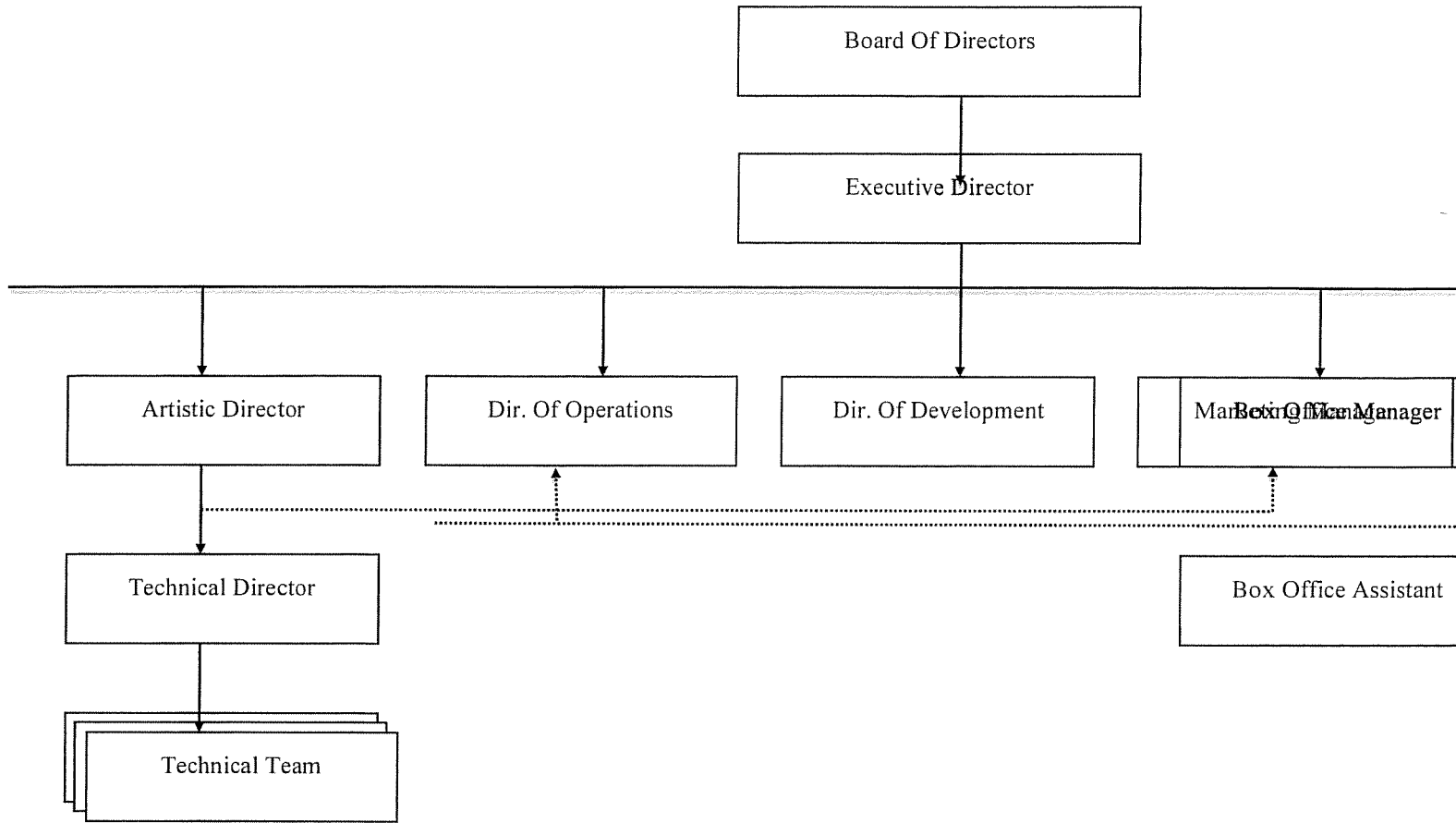
Renee Rudzinski, Box Office Manager, is a customer service and administrative expert and leads Kahilu's customer service and ticket sales team.

Danny Woodall our Marketing Manager has ten years experience in customer service, technical support, technical writing, process development, analytics and information systems.

Lisa Shattuck has been our Youth Program Coordinator for many years connecting us to schools and students as well as organizing our Youth Shows and education outreach events.

B. Organization Chart

Kahilu Theatre Organizational Chart as of 9/1/15



C. Compensation of three highest paid employees

Executive Director: \$75,000
Artistic Director: \$67,000
Director of Operations: \$50,000
Plus approx. 25% for benefits.

VI. Other

A. Litigation

The applicant shall disclose any pending litigation to which they are a party, including the disclosure of any outstanding judgement. If applicable, please explain. N/A

B. Licensure or Accreditation

The applicant shall specify any special qualifications, including but not limited to licensure or accreditation that the applicant possesses relevant to this request. N/A

C. Federal and County Grants

For federal and county grants awarded since July 1, 2014 see GIA page 9 attachment.

D. Private Educational Institutions

This grant will be not be used to support or benefit a sectarian or non-sectarian private educational institution.

E. Future Sustainability Plan

The State GIA funding requested will provide support to initiate this program. To continue program support in subsequent years KTF will actively fundraise to find private and foundation donors. We will also be working closely with the Kohala Village HUB to integrate their fledgling organization so that they can take over the administration of this program within three years.

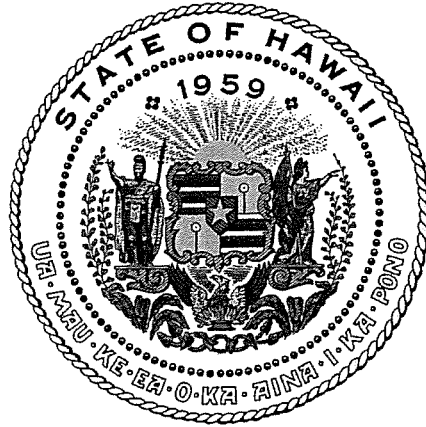
The applicant shall provide a plan for sustaining after fiscal year 2016-17 the activity funded by the grant if the grant of this application is:

- (1) Received by the applicant for fiscal year 2015-16, but
- (2) Not received by the applicant thereafter.

Grant-in-aid funding will be augmenting private foundation funds already received for this project. Once we have proven the effectiveness of the program and created an organizational structure we anticipate securing more private foundation funding and local sponsorships. The KTF Development Director will be responsible for grant writing and fundraising to secure funding for subsequent years working in collaboration with the Kohala Village HUB.

F. Certificate of Good Standing (If the Applicant is an Organization)

If the applicant is an organization, the applicant shall submit one (1) copy of a certificate of good standing from the Director of Commerce and Consumer Affairs that is dated no earlier than December 1, 2015.



Department of Commerce and Consumer Affairs

CERTIFICATE OF GOOD STANDING

I, the undersigned Director of Commerce and Consumer Affairs of the State of Hawaii, do hereby certify that

THE KAHILU THEATRE FOUNDATION

was incorporated under the laws of Hawaii on 03/11/1980 ; that it is an existing nonprofit corporation; and that, as far as the records of this Department reveal, has complied with all of the provisions of the Hawaii Nonprofit Corporations Act, regulating domestic nonprofit corporations.

IN WITNESS WHEREOF, I have hereunto set my hand and affixed the seal of the Department of Commerce and Consumer Affairs, at Honolulu, Hawaii.

Dated: January 21, 2016



Director of Commerce and Consumer Affairs



BUDGET REQUEST BY SOURCE OF FUNDS

Period: July 1, 2016 to June 30, 2017

App

Kahilu Theatre Foundation

BUDGET CATEGORIES	Total State Funds Requested (a)	Foundation Grants (b)	Private Donations (c)	Kahilu Theatre (d)
A. PERSONNEL COST				
1. Salaries	14,560	8,450		
2. Payroll Taxes & Assessments				
3. Fringe Benefits	3,640	2,220		
TOTAL PERSONNEL COST	18,200	10,670		
B. OTHER CURRENT EXPENSES				
1. Arts Instructors - Afterschool	24,000			
2. Insurance				3,500
3. Transport	3,800			
4. Drug Abuse Consultant	3,000			
5. Staff Training				4,500
6. Supplies	6,000			
7. Publicity				1,200
8. Utilities				1,200
9. Technical Services				3,200
10 arts Instructors - Camps		13,000		
11 Facility Rental			5,400	
12 Food and Refreshments			1,800	
13				
14				
15				
16				
17				
18				
19				
20				
TOTAL OTHER CURRENT EXPENSES	36,800	13,000	7,200	13,600
C. EQUIPMENT PURCHASES		15,000		
D. MOTOR VEHICLE PURCHASES	45,000			
E. CAPITAL				
TOTAL (A+B+C+D+E)	100,000	38,670	7,200	13,600
SOURCES OF FUNDING		Budget Prepared By:		
(a) Total State Funds Requested	100,000	Graham Ellis (808) 885 6868		
(b) Total Foundation Grants	38,670	Name (Please type or print) Phone		
(c) Total Private Donations	7,200	01/20/16		
(d) Total Kahilu Theatre	13,600	Signature of Authorized Person		
TOTAL BUDGET	159,470	Marie Kerley - Board President		

BUDGET JUSTIFICATION - PERSONNEL SALARIES AND WAGES

Period: July 1, 2016 to June 30, 2017

Kahilu Theatre Foundation

POSITION TITLE	FULL TIME EQUIVALENT	ANNUAL SALARY A	% OF TIME ALLOCATED TO GRANT REQUEST B	TOTAL STATE FUNDS REQUESTED (A x B)
Artistic Director		\$80,000.00	12.00%	\$ 9,600.00
Youth Program Coordinator		\$12,000.00	20.00%	\$ 2,400.00
Marketing Manager		\$42,000.00	5.00%	\$ 2,100.00
Technical Director		\$60,000.00	7.00%	\$ 4,200.00
				\$ -
				\$ -
				\$ -
				\$ -
				\$ -
				\$ -
				\$ -
				\$ -
				\$ -
				\$ -
				\$ -
				\$ -
				\$ -
				\$ -
				\$ -
				\$ -
				\$ -
TOTAL:				\$ 18,300.00
JUSTIFICATION/COMMENTS:				

The Artistic Director will manage the after school, spring and summer camp program activities and schedule. The Youth Program Coordinator will manage and schedule bringing students to Kahilu Youth Shows. The Marketing Manager and Technical Director will provide program support.

BUDGET JUSTIFICATION - EQUIPMENT AND MOTOR VEHICLES

Period: July 1, 2016 to June 30, 2017

KahiluTheatre Foundation

DESCRIPTION EQUIPMENT	NO. OF ITEMS	COST PER ITEM	TOTAL COST
			\$ -
			\$ -
			\$ -
			\$ -
			\$ -
TOTAL:			\$ -

JUSTIFICATION/COMMENTS:

DESCRIPTION OF MOTOR VEHICLE	NO. OF VEHICLES	COST PER VEHICLE	TOTAL COST
15 seater passenger van	1.00	\$45,000.00	\$ 45,000.00
			\$ -
			\$ -
			\$ -
			\$ -
TOTAL:	1		\$ 45,000.00

JUSTIFICATION/COMMENTS:

Includes cost of low mileage used van, registration, insurance, custom sign painting and roof rack.

GOVERNMENT CONTRACTS AND/OR GRANTS

Applicant: Kahilu Theatre Foundation

	CONTRACT DESCRIPTION	EFFECTIVE DATES	AGENCY	GOVERNMENT ENTITY (U.S. / State / Haw / Hon / Kau / Mau)	CONTRACT VALUE
1.	Western States Arts Federation (WESTAF) 2015-2016 TourWest Grant for Te Vaka	5/30/15-04/30/16	National Endowment for the Arts	U.S.	\$2,250.00
2.	Western States Arts Federation (WESTAF) 2014-2015 TourWest Grant for Amy O'Neals Opposing Forces	5/30/15-04/30/16	National Endowment for the Arts	U.S.	\$2,250.00
3.	New England Foundation for the Arts - Grant for Amy O'Neals Opposing Forces	06/01/15-05/31/16	National Endowment for the Arts	State	\$6,000
4.	Grant-In-Aid, Capital Improvements Project: Kahilu Theatre Repairs and Improvements	04/28/14-01/31/15 (extension granted to 06/30/16)	Department of Accounting and General Services	State	\$1,500,000.00
5.	Kahilu Theatre Foundation Youth Education Programs	07/01/15-06/30/16	Hawaii State Foundation on Culture and the Arts	State	\$9,265
6.	HTA County Product Enrichment Program: Second Half of 35 th Presenting Season and First Half of 36 th Presenting Season	01/01/16-12/31/16	Department of Research and Development	Hawaii County	\$25,000
				TOTAL	\$1,544,765.00

**DECLARATION STATEMENT OF
APPLICANTS FOR GRANTS PURSUANT TO
CHAPTER 42F, HAWAII REVISED STATUTES**

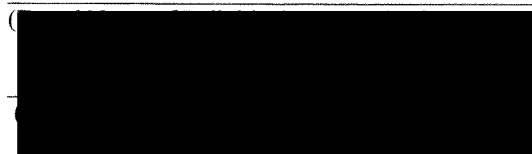
The undersigned authorized representative of the applicant certifies the following:

- 1) The applicant meets and will comply with all of the following standards for the award of grants pursuant to Section 42F-103, Hawaii Revised Statutes:
 - a) Is licensed or accredited, in accordance with federal, state, or county statutes, rules, or ordinances, to conduct the activities or provide the services for which a grant is awarded;
 - b) Complies with all applicable federal and state laws prohibiting discrimination against any person on the basis of race, color, national origin, religion, creed, sex, age, sexual orientation, or disability;
 - c) Agrees not to use state funds for entertainment or lobbying activities; and
 - d) Allows the state agency to which funds for the grant were appropriated for expenditure, legislative committees and their staff, and the auditor full access to their records, reports, files, and other related documents and information for purposes of monitoring, measuring the effectiveness, and ensuring the proper expenditure of the grant.
- 2) If the applicant is an organization, the applicant meets the following requirements pursuant to Section 42F-103, Hawaii Revised Statutes:
 - a) Is incorporated under the laws of the State; and
 - b) Has bylaws or policies that describe the manner in which the activities or services for which a grant is awarded shall be conducted or provided.
- 3) If the applicant is a non-profit organization, it meets the following requirements pursuant to Section 42F-103, Hawaii Revised Statutes:
 - a) Is determined and designated to be a non-profit organization by the Internal Revenue Service; and
 - b) Has a governing board whose members have no material conflict of interest and serve without compensation.

Pursuant to Section 42F-103, Hawaii Revised Statutes, for grants used for the acquisition of land, when the organization discontinues the activities or services on the land acquired for which the grant was awarded and disposes of the land in fee simple or by lease, the organization shall negotiate with the expending agency for a lump sum or installment repayment to the State of the amount of the grant used for the acquisition of the land.

Further, the undersigned authorized representative certifies that this statement is true and correct to the best of the applicant's knowledge.

Kahilu Theatre Foundation

()

01/20/16
(Date)

Deborah Goodwin Executive Director
(Typed Name) (Title)

DAVID IGE
GOVERNOR

ARTHUR F. SOUZA
COMPLEX AREA
SUPERINTENDENT



KATHRYN S. MATAYOSHI
SUPERINTENDENT

JANETTE SNELLING
PRINCIPAL

STATE OF HAWAII
DEPARTMENT OF EDUCATION
KOHALA HIGH SCHOOL
P.O. BOX 279
KAPAAU, HAWAII 96755

January 18, 2016

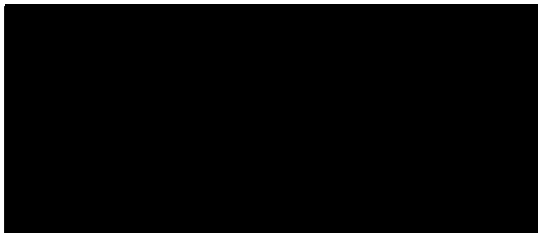
Mr. Tim Bostock
Artistic Director
The Kahilu Theatre
P.O. Box 549
Kamuela, HI 96743

Dear Mr. Bostock:

This letter is written to confirm our support of your State Grant in Aid proposal to provide outreach programs to schools in the Kohala Complex inclusive of Kohala High School. We are tremendously fortunate to have community partners who share in the passion of providing experiences in arts education.

We understand that this program will provide after school performance arts enrichment programs, spring and summer camps, opportunities to attend Youth Show performances, and the possibilities of participating in an arts showcase troupe—activities that will definitely ignite enthusiasm for learning!

We are wholeheartedly in support of your proposal and are committed to working in partnership with you.



AN AFFIRMATIVE ACTION AND EQUAL OPPORTUNITY EMPLOYER

DAVID Y IGE
GOVERNOR
ALAN BROWN
PRINCIPAL



KATHRYN MATAYOSHI
SUPERINTENDENT
ART SOUZA
COMPLEX AREA SUPERINTENDENT

STATE OF HAWAII
DEPARTMENT OF EDUCATION
KOHALA MIDDLE SCHOOL
P.O. BOX 777
53-4155 AKONI PULE HIGHWAY
KAPAAU, HAWAII 96755
PHONE: (808) 889-7119
FAX: (808) 889-7121

05/18/2015

To whom it may concern,

For the past several years Kohala Middle School has been fortunate to be able to partner with Kahilu Theatre Youth Shows Performances in Waimea and at our school in Kapaa. We are located in a remote area, about 25 miles over the mountain to the nearest stop light and the Theatre, and our student population is over 50% free and reduced lunch. We look forward to the annual excursions to the Theatre. The opportunity for our students to participate in these varied and rich activities helps to broaden their education in a way that is vital for them. In addition to general enrichment and cultural growth the shows help to provide context for a variety of academic topics.

In 2014-15, virtually all of our some 180 students were able to go to the Kahilu Theatre for shows. We targeted specific shows for our 6th (Stars of the American Ballet), 7th (Jake Shimabukuro) and 8th (The Brave) grade students. In addition, on two occasions this year Kahilu Theatre helped to bring performances to our school site. We were lucky enough to have a visit from the Waimea Ukulele and Slack Key Guitar Institute and also from the Clown in a Suitcase. We hope that Kahilu Theatre will continue to bless our students and community with arts programs which are so important for the growth of our children.

[REDACTED]
Alan Brown, Principal

E kulia i ka nu'u
Strive for the highest

AN AFFIRMATIVE ACTION AND EQUAL OPPORTUNITY EMPLOYER
Kohala Middle School does not discriminate on the basis of race, color, sex, disability or age in its programs and activities and provides equal access to the Boy Scouts and other designated youth groups-ESE only.
The following person has been designated to handle inquiries regarding the nondiscrimination policies:
Alan Brown, Principal, PO Box 777 Kapaa, HI 96755
Telephone: (808) 889-7119 x224 Email: alan_brown@notes.k12.hi.us

DAVID IGE
GOVERNOR
DANNY P. GARCIA
PRINCIPAL



KATHRYN MATAYOSHI
SUPERINTENDENT
ART SOUZA
COMPLEX AREA SUPERINTENDENT

STATE OF HAWAII
DEPARTMENT OF EDUCATION
KOHALA ELEMENTARY SCHOOL
PO BOX 279
KAPAAU, HAWAII 96755
PHONE: (808) 889-7100
FAX: (808) 889-7103

“All students at Kohala Elementary School will be empowered to reach their full potential.”
-Kohala Elementary School Faculty & Staff

Tuesday, May 12, 2015

Subject: Letter of Support for the Kahilu Theatre Educational Outreach Program

To Whom It May Concern:

Tim Bostock and the staff at Kahilu Theatre have been nothing short of exceptional in their support of Art Education Outreach for Kohala Elementary School. Even when I began my tenure as Principal here in 2010, our students were already regularly attending performances at Kahilu Theatre. And since the “re-opening” of the Kahilu Theatre, our partnership has strengthened ten-fold.

Currently, we average at least one field trip per grade level per school year with some grade levels attending additional performances. In addition, we have maybe two to three school visits by performers from the Kahilu Theatre calendar. Some performers provide interactive lessons/performances with individual grades and/or classes or school wide assemblies. Some school favorites have been Slam Poet Kealoha, the Jeff Peterson, Benny Chong and Aidan James assembly, and an Irish Folk Band. Some favorites that the students have attended at Kahilu have been Maisey Rika, Peter and the Wolf, HTY Grinds, and Legends of the Forest.

The importance of Arts and Performance in schools is obvious. My commitment to my students, staff and community is to always find a way to incorporate Arts and Performance into our overall educational program. Arts and Performance lend to critical brain development, communication, creativity, and perseverance. Not to mention its just FUN!

Kohala Elementary School will continue to support the Kahilu Theatre and its Educational Outreach Program and we hope to sustain a long lasting relationship.

Mahalo Nui Loa

Danny P. Garcia
Principal

NORTH KOHALA COMMUNITY RESOURCE CENTER

Providing Local Support, Bridges to Funding & Education for Projects that Benefit the Community
55-3393 Akoni Pule Hwy ~ P. O. Box 519, Hawii, Hawaii 96719
Phone: 808 889-5523 ~ Fax: 808 889-5527 ~ www.northkohala.org ~ Email: info@northkohala.org

A great way to love Kohala!

January 15, 2016

Graham Ellis
Kahilu Theater
Development Consultant
808.885.6868 x108 (work)
808.557.4523 (cell)
www.kahilutheatre.org
graham@kahilutheatre.org

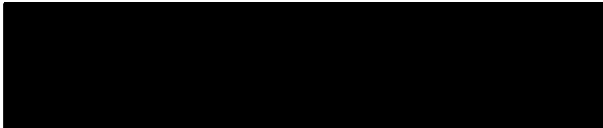
To whom it may concern:

On behalf of our Board of Directors, it is our distinct pleasure to write this letter of recommendation for the State Grant in Aid proposal to support arts education outreach programs provided by Kahilu Theatre to Kohala school students. Their purpose in providing extracurricular activities is to promote academic excellence and reduce the threat of drug use and other social challenges facing local youth.

They will partner with Kohala Elementary, Middle and High Schools to provide after school performance arts enrichment programs twice weekly during the 2016-17 school year. Twelve classes will be offered each week serving about 120 students. They will also partner with the Kohala Village HUB to provide annual spring and summer camps serving 120 students from Kohala Elementary, Middle and High Schools and home school programs. They will also provide subsidies for up to 1,200 students from Kohala Elementary, Middle and High Schools and home school programs to attend Youth Show performances at Kahilu Theatre.

These programs are critical here in rural Kohala to provide the support and enrichment of our Keiki's lives. Please support this worthy request for the children of North Kohala.

Sincerely,


Christine Richardson
NKCRC Executive Director

DIRECTORS

Alida Adamek

Treasurer

Retired CPA

Gino Amar

President

Administrator

Kohala Hospital

Chris Brown

Vice-President

Retired Kohala Teacher

Malcolm Davis

HPA Youth Director

Chris Helmuth

Business Owner

Kumulani Kaai

KHS Youth Director

Vicky Kometani

Public Relations Director

Mauna Kea Resort

Bob Martin

Small Business Consultant

Amy Meyer Sullivan

Secretary

Small Business Owner

Wendy Nickl

Kohala Teacher

Kim Takata

Small Business Owner

Jessica Tenorio

KHS Youth Director

HONORARY

DIRECTORS

Lani Bowman

Jessica Brown

Joe Carvalho

David Gomes

Dennis Matsuda

Kathleen Matsuda

Faye Mitchell

Nani Svendsen

Fran Woollard

Desiree Delos Santos

EXECUTIVE DIRECTOR

Christine Richardson

ASSOCIATE DIRECTOR

Megan Solis

ADMINISTRATIVE

ASSISTANT

Juanita Rivera

**North Kohala Student Cultural Enrichment Program
PO Box 307
Kapa`au, HI 96755**

January 18, 2016

To Whom It May Concern:

Re: Support for Kahilu Theatre

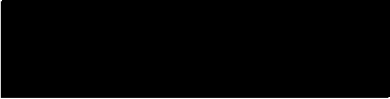
We are writing to express support on behalf of the North Kohala Student Cultural Enrichment Program (NKSCEP) for Kahilu Theatre and the important work it is doing for our elementary and middle school students. We are especially excited for the outreach program initiated to bring programming directly to our students, and subsidize their participation in Kahilu youth programs.

The North Kohala Student Cultural Enrichment Program started seven years ago. Both Kohala elementary and middle schools are designated poverty schools. The goal of NKSCEP is to enrich the lives of North Kohala students by providing opportunities they would normally not have access to. These include attendance at Kahilu Theatre youth programs, and in-school visits by performing artists.

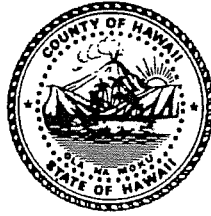
Kahilu Theatre has been extremely supportive of our rural community. As well as supporting our students' attendance at Theatre events, Kahilu also facilitates in-school orientations to the youth programs by the performers themselves.

Kahilu plays an essential role in our under-served community. On behalf of our students, we encourage funding for the expansion of this important community program.

Sincerely,


Laura Burkhart and Dixie Adams
Volunteer Coordinators, NKSCEP

William P. Kenoi
Mayor



Walter K.M. Lau
Managing Director

Randall M. Kurohara
Deputy Managing Director

County of Hawai'i Office of the Mayor

25 Aupuni Street, Suite 2603 • Hilo, Hawai'i 96720 • (808) 961-8211 • Fax (808) 961-6553
KONA: 74-5044 Ane Keohokalole Hwy., Bldg. C • Kailua-Kona, Hawai'i 96740
(808) 323-4444 • Fax (808) 323-4440

September 29, 2015

Aloha,

The Kahilu Theatre is an iconic gathering place for the North Hawai'i community, and its many concerts, live performances, and special projects keep our community active and vibrant.

The Kahilu Theatre Foundation is a great steward of this community treasure, and their commitment and drive to improve it for generations to come is admirable. They cannot afford to continue these events, and make major improvements for the benefit of their patrons and performers without the generosity of community donations and the receipt of significant grant funding. We applaud the Kahilu Theatre Foundation for their efforts to create a project that will connect with residents and celebrate the historical development of Waimea.

The Kahilu Theatre is a beacon of culture not only in North Hawai'i, but also our entire island community. I extend my support to the Kahilu Theatre and the efforts of the foundation to find the necessary resources to continue to bring programs, performances and special events to this valuable community resource.

Mahalo


Billy Kenoi
MAYOR



April 2, 2015

Dear Rep. Cindy Evans and Sen. Lorraine Inouye,

Thank you for supporting, promoting and sponsoring Kahilu Theatre's request for a \$165,000 grant to support operational costs for their growing community outreach educational program. The dedicated Board of Directors and staff at Kahilu continually demonstrate their commitment to achieving the mission statement of making Kahilu Theatre a place where community, creativity and inspiration thrive.

I am a Performing Arts instructor, having taught various performance classes, grades 6 – 12, over the past 24 years at Hawaii Preparatory Academy. Each day I am committed to introducing my students to the arts and promoting their participation in and appreciation of the arts. Obviously I am a strong proponent of the performing arts and the character virtues built through participating in the arts. Kahilu Theatre fills a huge void by offering programs to students who are not fortunate enough to have an arts education within their school system. Through their Youth Show performance program, all students, including mine, are able to benefit from seeing professionals first hand.

The community commitment to Kahilu is pervasive. There are many townspeople who have supported the theatre in various ways over the years. For example, twenty years ago, I was a volunteer usher and coordinator of the usher volunteers for five years. For three years, I was one of the instructors in the Summer Arts for Children theatre program. Currently, I am an audience member and as Director of the Waimea Community Chorus, have the pleasure of presenting two concerts a year on the Kahilu stage. There are many similar stories, which demonstrate a community commitment to the need for arts in our lives.

I hope that you are successful in acquiring the grant to support Kahilu Theatre's commitment to maintaining, improving and increasing their arts education program to children throughout the larger community.

Sincerely,

A black rectangular box redacting the signature of Barbara Kopra.

Barbara Kopra
6-12 Performing Arts Instructor

Subject: Grant-in-aid testimony

Date: Thursday, March 19, 2015 at 4:52:57 PM Hawaii-Aleutian Standard Time

From: Tracey Gilmore

To: tim@kahilutheatre.org

Aloha,

I am writing to support the expansion of the Kahilu Theatre Foundation's Education Program, through application to the State of Hawaii Grant-in-aid program. Music and art education is associated with gains in math, reading, cognitive ability, critical thinking, and verbal skill. Arts learning can also improve motivation, concentration, confidence, and teamwork. An education in the arts can connect people more deeply to the world and open them to new ways of seeing, creating the foundation to forge social bonds and community cohesion. And arts education helps close a gap that has left many a child behind: From Mozart for babies to tutus for toddlers to family trips to the museum, the children of affluent, aspiring parents generally get exposed to the arts whether or not public schools or other programs provide them. Low-income and at-risk children, often, do not. Arts education enables those children from a financially challenged background, or who reside in rural areas, to have a more level playing field with children who have had those enrichment experiences. This is especially true here on the Big Island, and it's fantastic that we have such a special place as Kahilu Theatre to help fill some of those gaps in arts education. Kahilu education programs provide arts education to public school students who would not have access to the arts otherwise. 60% of the youth that Kahilu serves is at-risk, from intergenerational or low-income families.

Kahilu's education and outreach programs are affordable and provide positive role models and educational opportunities for youth and families.

The Kahilu Youth Shows are full of delighted children, teachers and home-schooling families. The artists are mostly professional visiting artists and are of a very high quality, often exposing kids for the first time to ballet, or bluegrass, or slack key, or virtuoso ukulele, or classical crossover music, to name a few of the most recent youth shows.

The new K-Arts Kohala program will:

- 1) provide exposure to and participation in the visual and performing arts for students in an under-served, rural area at no cost to families;
- 2) build the self-esteem, cultural awareness, and empowerment of all participants, as well as provide opportunities to develop leadership skills
- 3) support the three Kohala public schools, especially Kohala Middle School in providing a well-rounded education and reinforcing attendance and academics.

The arts improve academic performance. Studies have shown that engaging in the arts has a tremendous impact on the developmental growth of every child and has proven to help level the "learning field" across socio-economic boundaries by strengthening critical-thinking, cognitive and creative skills. Through the arts, students nurture important values including team-building skills, respecting alternative viewpoints, and appreciating and being aware of different cultures and traditions. The community benefits because youth who have a history of in-depth arts involvement have better academic outcomes, higher career goals, and are more civically-minded, according to a report entitled *The Arts and Achievement in At-Risk Youth: Findings from Four Longitudinal Studies* (NEA 2012).

We know that there are many needs throughout the State that would benefit from this Grant-in-aid. Please consider this - we're preparing kids for jobs. We're preparing them to be citizens. And we're teaching them to be human beings who can enjoy the deeper forms of beauty. The third is as important as the other two. Students flourish when creativity drives learning. Thank you for your attention to this matter.

Best Regards,

Subject: FW: Educational program testimonial

Date: Thursday, March 26, 2015 at 10:34:51 AM Hawaii-Aleutian Standard Time

From: renee@kahilutheatre.org

To: Tim

-----Original Message-----

From: "Marc Baril" <baril@cfht.hawaii.edu>

Sent: Wednesday, March 25, 2015 5:05pm

To: info@kahilutheatre.org

Subject: Educational program testimonial

Hi,

At Tim Bostok's request made at the last Kamuela Phil. concert, here is a testimonial you can use in support of securing funding for the educational program. I hope it isn't too long winded... feel free to quote what you like!

Best regards,

Marc

My two children (8 and 10 years old) have grown up in Waimea. In the last 10 years, with very few exceptions, almost all of the performances they have seen through their school and pre-school outings have been at the Kahilu Theatre. My children always look forward to these performances. In fact, the parents in our school are always eager to volunteer with leading the school groups so that they can see the performances themselves! Indeed, the educational program is not just aimed at youth.

As somebody who strongly values the importance of performing arts education, it is very important for me that my children attend live performances. In particular, experiencing live musical performances by accomplished artists gives context and meaning to their own musical studies at home. They can see that there is a point to all the hard work that goes into practicing an instrument! They also learn that music, acting and dance are about much more than achieving impressive technical abilities, but at their core the arts are about finding a personal connection with the ideas and emotions in an artistic work and then conveying these same to an audience. I can't think of how to do this without live performance - recorded video and acoustic streams can only go so far. Often the context is lost, which makes appreciation of the performance difficult and often meaningless.

In short, I strongly support all of effort the Kahilu Theatre is making in developing their educational program!

Testimony in support of the Kahilu Theatre's GIA application to offer a series of youth arts education programs for the children of Waimea:

The value of arts education has been studied and researched for the past decade, demonstrating over and over that sustained arts education is an essential part of social and intellectual development.

- A 2002 REPORT BY THE ARTS EDUCATION PARTNERSHIP REVEALED THAT SCHOOLCHILDREN EXPOSED TO DRAMA, MUSIC AND DANCE ARE OFTEN MORE PROFICIENT AT READING, WRITING, AND MATH. While some might be tempted to think the arts a frivolous part of the educational system, this report suggests otherwise. It looked at over 62 different studies from 100 researchers, spanning the range of fine arts from dance to the visual arts. In 2002, it was the first report of its kind to look at the impact of art on academic performance. Using this data, researchers determined that students who received more arts education did better on standardized tests, improved their social skills and were more motivated than those who had reduced or no access.
- A Guggenheim pilot program called Learning Through Art, sent artists into schools to teach students and help them create their own masterpieces. Kids who took part in the program performed better on six different categories of literacy and critical thinking skills than those who did not.
- A 2005 REPORT BY THE RAND CORPORATION CALLED "A PORTRAIT OF THE VISUAL ARTS" ARGUES THAT ART EDUCATION DOES MORE THAN JUST GIVE STUDENTS A CREATIVE OUTLET. IT CAN ACTUALLY HELP CONNECT THEM TO THE LARGER WORLD, ULTIMATELY IMPROVING COMMUNITY COHESION.
A bold assertion, but not one without merit. Students from lower income families often get little exposure to the arts if they are not provided by schools. The report shows that arts education can help close the gap between socioeconomic groups, creating a more level playing field between children who may not be exposed to these

enrichment experiences outside of school and some of their more privileged peers.

- A 2011 STUDY CALLED “REINVESTING IN ARTS EDUCATION” FOUND THAT INTEGRATING ARTS WITH OTHER SUBJECTS CAN HELP RAISE ACHIEVEMENT LEVELS.
- Arts education may not just help raise test scores, but also the learning process itself, as a recent study revealed. This report on the Maryland school system found that skills learned in the visual arts could help improve reading and the counterparts fostered in playing an instrument could be applied to math.
- While proponents of arts education have long asserted that creative training can help develop skills translating into other areas of academics, little research had been done to investigate the scientific component. Aspects of training in the arts, like motor control, attention and motivation, were studied by researchers who participated in the report, with some interesting results. In one four-year study, students undertaking regular music training were found to have changes in their brain structures helping them transfer their motor skills to similar areas. Another found students motivated to practice a specific art form and spent time with focused attention increased the efficiency of their attention network as a whole, even when working in other areas of study — and it improved their fluid IQ scores. Other studies reported similar scientific findings on the arts’ impact on the brain, showing that sustained arts education is an essential part of social and intellectual development.

Please support the Grant-In-Aid to Kahilu Theatre as generously as possible.
Sincerely,

*Elaine Warner, M.S., M.L.S.
P. O. Box 1185
Kamuela HI 96743
(808) 885-1725 home
(808) 895-7573 mobile*

Subject: Grant-in-aid testimony

Date: Thursday, March 19, 2015 at 4:52:57 PM Hawaii-Aleutian Standard Time

From: Tracey Gilmore

To: tim@kahilutheatre.org

Aloha,

I am writing to support the expansion of the Kahilu Theatre Foundation's Education Program, through application to the State of Hawaii Grant-in-aid program. Music and art education is associated with gains in math, reading, cognitive ability, critical thinking, and verbal skill. Arts learning can also improve motivation, concentration, confidence, and teamwork. An education in the arts can connect people more deeply to the world and open them to new ways of seeing, creating the foundation to forge social bonds and community cohesion. And arts education helps close a gap that has left many a child behind: From Mozart for babies to tutus for toddlers to family trips to the museum, the children of affluent, aspiring parents generally get exposed to the arts whether or not public schools or other programs provide them. Low-income and at-risk children, often, do not. Arts education enables those children from a financially challenged background, or who reside in rural areas, to have a more level playing field with children who have had those enrichment experiences. This is especially true here on the Big Island, and it's fantastic that we have such a special place as Kahilu Theatre to help fill some of those gaps in arts education. Kahilu education programs provide arts education to public school students who would not have access to the arts otherwise. 60% of the youth that Kahilu serves is at-risk, from intergenerational or low-income families.

Kahilu's education and outreach programs are affordable and provide positive role models and educational opportunities for youth and families.

The Kahilu Youth Shows are full of delighted children, teachers and home-schooling families. The artists are mostly professional visiting artists and are of a very high quality, often exposing kids for the first time to ballet, or bluegrass, or slack key, or virtuoso ukulele, or classical crossover music, to name a few of the most recent youth shows.

The new K-Arts Kohala program will:

- 1) provide exposure to and participation in the visual and performing arts for students in an under-served, rural area at no cost to families;
- 2) build the self-esteem, cultural awareness, and empowerment of all participants, as well as provide opportunities to develop leadership skills
- 3) support the three Kohala public schools, especially Kohala Middle School in providing a well-rounded education and reinforcing attendance and academics.

The arts improve academic performance. Studies have shown that engaging in the arts has a tremendous impact on the developmental growth of every child and has proven to help level the "learning field" across socio-economic boundaries by strengthening critical-thinking, cognitive and creative skills. Through the arts, students nurture important values including team-building skills, respecting alternative viewpoints, and appreciating and being aware of different cultures and traditions. The community benefits because youth who have a history of in-depth arts involvement have better academic outcomes, higher career goals, and are more civically-minded, according to a report entitled *The Arts and Achievement in At-Risk Youth: Findings from Four Longitudinal Studies* (NEA 2012).

We know that there are many needs throughout the State that would benefit from this Grant-in-aid. Please consider this - we're preparing kids for jobs. We're preparing them to be citizens. And we're teaching them to be human beings who can enjoy the deeper forms of beauty. The third is as important as the other two. Students flourish when creativity drives learning. Thank you for your attention to this matter.

Best Regards,

Subject: In support of arts and cultural education funding

Date: Wednesday, March 25, 2015 at 4:35:59 PM Hawaii-Aleutian Standard Time

From: Austen Stone

To: Tim Bostock

To Whom It May Concern:

I am writing in support of continued State of Hawaii funding for the wonderful programs at the Kahilu Theater in Kamuela on the Big Island. Youth and community enrichment happens on a regular basis at this gem of a theater. Just a few days ago, I saw and heard three youngsters with major talent perform difficult classical music, and my socks were blown off! The concert was "A Salute to Youth" with the young musicians soloing with the Waimea Philharmonic Orchestra. I attend world-class events of many kinds at our Kahilu Theater, and I consider myself so very fortunate to live nearby. Artistic Director Tim Bostock, with a long history of providing great leading energy to arts education and youth, has transformed our town into an arts and cultural center which simply glitters with variety and class!

Please continue vital funding for arts education opportunities which beneficially change the lives of our youth.

Sincerely,

Mrs. Austen Stone, M.P.H.

Sent from my iPad