

January 20, 2016

Senate Committee on Ways and Means
Hawaii State Legislature
State Capitol, Room 207
Honolulu, HI 96813

To Whom It May Concern:

As duly noted by the time and date affixed to this document, the Committee on Ways and Means of the Hawaii State Senate hereby certifies that The Friends of the Volcano School of Arts & Sciences has officially submitted, and the Committee on Ways and Means has officially received prior to its stated deadline of 4:30 p.m. on Friday, January 22, 2016, one (1) original and signed copy of that organization's Application for Grants and Subsidies (per Chapter 42F, Hawaii Revised Statutes) for due consideration by the 28th Legislature of the State of Hawaii for Fiscal Year 2016-2017.

Thank you,

Amalie Dorn
President, Board of Directors
The Friends of the Volcano School of Arts & Sciences
99-128 Old Volcano Road
Volcano, HI 96785

House District 3

Senate District 2

THE TWENTY-EIGHTH LEGISLATURE
APPLICATION FOR GRANTS
CHAPTER 42F, HAWAII REVISED STATUTES

Log No:

For Legislature's Use Only

Type of Grant Request:

GRANT REQUEST -- OPERATING

GRANT REQUEST -- CAPITAL

"Grant" means an award of state funds by the legislature, by an appropriation to a specified recipient, to support the activities of the recipient and permit the community to benefit from those activities.

"Recipient" means any organization or person receiving a grant.

STATE DEPARTMENT OR AGENCY RELATED TO THIS REQUEST (LEAVE BLANK IF UNKNOWN):

DEPARTMENT OF EDUCATION

STATE PROGRAM LD. NO. (LEAVE BLANK IF UNKNOWN):

EDN600 - CHARTER SCHOOLS

1. APPLICANT INFORMATION:

Legal Name of Requesting Organization or Individual:
Friends of The Volcano School of Arts & Sciences (FVSAS)

Dba: Same

Street Address: 99-128 Old Volcano Road, Volcano, HI 96785

Mailing Address: P.O. Box 845, Volcano, HI 96785

2. CONTACT PERSON FOR MATTERS INVOLVING THIS APPLICATION:

Name: AMALIE DORN

Title: Chair, FVSAS

Phone No.: (808) 985-9901

Fax No.: (808) 985-9898

E-mail: friendsofvsas@gmail.com

3. TYPE OF BUSINESS ENTITY:

- NON PROFIT CORPORATION INCORPORATED IN HAWAII
- FOR PROFIT CORPORATION INCORPORATED IN HAWAII
- LIMITED LIABILITY COMPANY
- SOLE PROPRIETORSHIP/INDIVIDUAL
- OTHER

6. DESCRIPTIVE TITLE OF APPLICANT'S REQUEST:

COMMUNITY MULTIPURPOSE BUILDING - THE VOLCANO SCHOOL OF ARTS & SCIENCES.

4. FEDERAL TAX ID NO.:

[REDACTED]

5. STATE TAX ID NO.:

7. AMOUNT OF STATE FUNDS REQUESTED:

FISCAL YEAR 2017: \$ 1,600,000

8. STATUS OF SERVICE DESCRIBED IN THIS REQUEST:

- NEW SERVICE (PRESENTLY DOES NOT EXIST)
- EXISTING SERVICE (PRESENTLY IN OPERATION)

SPECIFY THE AMOUNT BY SOURCES OF FUNDS AVAILABLE AT THE TIME OF THIS REQUEST:

STATE	\$ 903,000
FEDERAL	\$ —
COUNTY	\$
PRIVATE/OTHER	\$ 176,000

REPRESENTATIVE:

[REDACTED SIGNATURE]

AMALIE DORN, CHAIR, FVSAS

1-15-16

AUTHORIZED SIGNATURE

NAME & TITLE

DATE SIGNED



RECEIVED
1/22/16
[Signature]

Application for Grants

If any item is not applicable to the request, the applicant should enter "not applicable".

I. Background and Summary

This section shall clearly and concisely summarize and highlight the contents of the request in such a way as to provide the State Legislature with a broad understanding of the request. Please include the following:

1. A brief description of the applicant's background;

The Friends of The Volcano School of Arts & Sciences (hereinafter FVSAS) is a 501c(3) not-for-profit organization that supports The Volcano School of Arts & Sciences (hereinafter VSAS), a well-regarded, Western Association of Schools & Colleges (WASC) accredited, public charter school that has been serving the greater Volcano community of east Hawai'i Island since 2001. The school maintains a current enrollment of 158 students from kindergarten through the 8th grade and has a waiting list of 52 applicants. Class sizes are limited to between 18 and 21 students depending upon the grade level. Thirty-five percent of the school's student body comes from well outside the Volcano area, from as far away as Na'ālehu and Pahala to the south in the District of Ka'ū, and Kea'au and Mountain View to the northeast in the Puna District.

VSAS's educational mission is to provide a solid foundation of learning for its students, by focusing on the unique ecosystems and geology of the area encompassing Hawai'i Volcanoes National Park and its environs; cultivating personal and collective responsibility for nature and the environment; involving the Volcano community in ongoing partnerships; and nurturing respect for and understanding of Native Hawaiian culture.

2. The goals and objectives related to the request;

FVSAS is conducting a capital campaign to expand the school's existing facilities at its Keakealani campus, which currently houses its middle school classes, so that it can relocate its elementary school classes on site and thus consolidate its operations on one locale. The school has recently signed a long-term (60-year) no-cost lease with the State Department of Land and Natural Resources for the 3.15-acre site on Haunani Road, and the State of Hawai'i has released a \$618,000 appropriation from the State Legislature for purposes of planning, design and site preparation.

This project will retain but modernize the historic existing school building as the centerpiece of the campus, in a manner that both enhances its historic status as a community landmark, and maintain the original intent of the family of the late Peter Lee, who in 1915 donated the property upon which the original building is sited, for the expressed purpose of building a public school for the greater Volcano community.

In addition to that existing structure, the new campus when completed will be able to accommodate up to 200 students and will consist of 14 separate 28'x28' classrooms, an administration building, a community kitchen with an adjacent 60'x-60' multipurpose building, outdoor learning spaces, and a playfield. The campus will also have 29 parking spaces, bike racks, and a roundabout which will allow parents and guardians to drop off their children safely and then depart the campus easily.

FVSAS is seeking a \$1.6 million grant in aid from the State of Hawai'i for the construction of the 60'x-60' multipurpose building, which serve as both a community dining hall for the adjacent community kitchen, and further function as school cafeteria, assembly hall for VSAS students, and a community meeting facility for upcountry residents. Total project cost is \$6 million. The relocation and consolidation of existing operations in one locale will allow the public charter school to expand its enrollment, particularly at the elementary school levels where the demand is most acute, and the multipurpose building will further provide a much-needed public venue for the greater Volcano community.

3. The public purpose and need to be served;

"As a rural area with a rudimentary transportation system and dispersed population" it is difficult for residents to gain access to needed services (Puna Community Development Plan Steering Committee, 2008, p. 3-11). In Volcano, specifically, there is a "disproportionately higher percentage of older adults and retirees than other communities in Puna, and a lower percentage of school age children" (Volcano Community Association, 2014, p. 13), many of whom also have transportation or access challenges. Therefore, schools become an important resource "serving not only as educational institutions, but also as de facto community centers and recreation areas in rural areas where few other venues are available for meetings, events and organized or informal sports." (Puna Community Development Plan Steering Committee, 2008, p. 3-11).

The community-identified needs include:

- Transportation challenges (due to geographic distance and disbursement);
- Mobility challenges (due to age, disability or health);
- Community Centers for meetings, events, and other recreation; and
- Income-generating opportunities and employment that promote education, sustainability and "green" living.

Through our Community Kitchen, we can facilitate options for feeding our neighbors through programs similar to Meals-on-Wheels, taking the food to people where they live and providing some social connection for those individuals on a regular basis.

After our initial school development plans are completed, the Community Kitchen will be located next to our Meeting Facilities, which is a large multipurpose building thereby enabling community members to have access to facilities for meeting, events, and other social activities.

In alignment with the Puna Community Development Plan, FVSAS and VSAS are committed to serve the community by encouraging economic growth for businesses in Puna and surrounding areas, and by integrating local produce grown by neighboring farmers, which will help to expand local markets for consumption.

Educational and economic support services such as developing a business incubator by sharing usable spaces could also be possible, "where small businesses can, for a start-up period of two to three years, occupy spaces at subsidized rent, share receptionist and other common support services and facilities, and have access to business mentoring, marketing skills training, and product promotion programs." (Puna Community Development Plan Steering Committee, 2008, p. 3-10).

As an educational institution, VSAS has been exploring a partnership with the Hawai'i Community College (HawCC) as a way to offer educational opportunities closer to residents. Such offerings could include technology training, "community-based organic farming operation and training," job readiness skills, and through the Community Kitchen, culinary arts. (Puna Community Development Steering Committee, 2008, p. 3-11.)

Development of a Multipurpose Building, in conjunction with the attached Community Certified Kitchen, meets several of the needs of both the Puna Community Development Plan and the Volcano Long-Range Plan, and provides the school with a hot-preparation kitchen for school breakfast and lunch service for our students. Partnering with the Hawai'i Child and Nutrition Program, we will be able to offer meals to members of the community at no cost or minimal cost during the summer as well.

4. Describe the target population to be served.

The Friends of The Volcano School of Arts & Sciences primarily serves the target population in many ways, through our support role to VSAS. VSAS current school enrollment for School Year 2015-2016 in grades K-8 is 158 with an expected projection of 188 at the official count date in October 2016.

About half of the students reside in the Volcano area, and many students come from Mountain View, Na'ālehu, and Ocean View. Other students travel from as far away as Hilo and Pahoa. Of the students enrolled at VSAS, 47% live within the Volcano area, 28% travel between 13-27 miles one way to attend school on a daily basis, and 25% of the students travel 30-50 miles one way to attend VSAS. The distance that students travel, the number of prospective students on the waiting list, and the average daily attendance (91.3% over the past four years), indicates not only satisfaction with the services that VSAS offers its students, but also the willingness of families to put forth the effort to ensure that their children are afforded a quality education.

Our students are of a diverse ethnic and socio-economic mix. In 2013-2014, the primary ethnicities reported by our students were: Caucasian (45%), Hawaiian or Part-Hawaiian (30%), Japanese (7%), Filipino (6%), Hispanic (3%), Black (3%), Portuguese (3%), American Indian (2%), and Chinese (2%). We estimate approximately half of the students are of mixed race. Most Hawaiian, Asian, Polynesian, Portuguese, and American Indian students are of mixed race while a few Caucasian, African-American, and Hispanic students are also of mixed race.

While the target population for this project will first and foremost be the students enrolled at The Volcano School of Arts & Sciences, the wider Volcano community, volunteers, and VSAS parents and guardians will benefit from the Community Kitchen and Multipurpose Building through educational programs, meals and access to the facilities.

5. Describe the geographic coverage.

The Friends of the VSAS is co-located with VSAS and serves the Puna and Ka'ū districts in the southern region of the Island of Hawai'i. The Kea'au-Mountain View division is the region in Puna that is nearest the school, and Volcano and Fern Forest are the communities in that particular division that are most served by school. Approximately one-third of VSAS students are from Ka'ū. All told, the public charter school's service area stretches some 65 miles along Hwy. 11, from Kea'au outside of Hilo to Na'ālehu near South Point.

County of Hawai'i: The State of Hawai'i has a land area of approximately 6,400 square miles, and the Island of Hawai'i is about 4,000 square miles, making it by far the largest island in the chain. The 2012 U.S. Census estimates that as of 2012 the island's total population was 189,191, or about 14% of the state's population of 1,392,313. With 63% of the state land area, the County of Hawai'i is sparsely populated, with an average of 47 persons per square mile according to the 2010 U.S. Census.

Puna and Ka'ū: According to the mostly recent available census data (Census 2010), the Keaau-Mountain View region has a land area of 232.04 square miles and a population of 34,266, with about 147.7 persons per square mile, significantly higher than the county average. The Ka'ū region is very sparsely populated, averaging only about 9 persons per square mile with a large land area of 1,196.58 square miles and a population of 8,451.

Both Ka'ū and Puna have the highest agricultural land usage in the County of Hawai'i. Ka'ū has by far the highest conservation usage at over 427,000 acres, nearly double the next largest amount of conservation land of 236,315 acres in the district of Hāmākua.

Puna has had the fastest growing rate of residential construction on the island, based on permits issued. Commercial construction has also occurred, but not at as high a rate. This rapid increase of new residents has outpaced infrastructure, and has resulted in long-distance travel for many basic necessities. Ka'ū has also experienced a recent boom in construction, though this seems to have slowed. Puna and Ka'ū also have had the highest rate of vacant land sales, accounting for almost 4/5 of all land sales on the island in 2006. Median dollar values of both single-family homes and vacant land in Puna and Ka'ū are the lowest on the island.

Volcano Community: The community of Volcano lies thirty miles from Hilo amid tree ferns and lava flows at 4,000 feet elevation on the east flank of Mauna Loa. The Volcano area is geographically and biologically unique, even in a state remarkable for its diversity. Native trees and bird occur naturally in our backyards. There are active steam vents along the roadsides and lava flows that have not yet begun to support life.

The Volcano area, which includes Volcano Village and neighboring communities, encompasses a land area of about 57 square miles with a population of 2,231 as of the Census 2000, about 39 persons per square mile and representative of the county average.

II. Service Summary and Outcomes

The Service Summary shall include a detailed discussion of the applicant’s approach to the request. The applicant shall clearly and concisely specify the results, outcomes, and measures of effectiveness from this request. The applicant shall:

1. Describe the scope of work, tasks and responsibilities;

Planning and Design activity will involve the development of a design program. This document will be an all-inclusive, exhaustive directive to the various consultants to guide them in the meeting of the desired goals and outcomes. This will include, but not be limited to:

- a. Grading requirements, fencing storm water control
- b. Required and necessary community involvement
- c. On-site wastewater disposal (IWS)
- d. On-site water catchment and storage; storage for potable water
- e. A multipurpose building that will include an attached community kitchen and auxiliary spaces as may be required
- f. Space for custodial requirements and storage (hot, cold, and dry)
- g. Engineering Activity:
 - Renewable electric energy
 - Solar hot water generation and
 - On-site water generation.

2. Provide a projected annual timeline for accomplishing the results or outcomes of the service;

The planning and design phases of the school's classroom facilities are underway, thanks to community involvement, volunteerism, donations, with the school and its non-profit organization – the Friends of The Volcano School of Arts & Sciences – covering the remaining costs. The multipurpose building timeframe is as follows:

<u>Description of Task</u>	<u>Start Date</u>	<u>End Date</u>	<u>Current Status</u>
Architectural Design	January 2016	March 2016	In progress
Building Permits	November 2015	April 2016	In progress
Actual Construction	July 2016	November 2016	Scheduled
Commencement of Services	December 2016		

3. Describe its quality assurance and evaluation plans for the request. Specify how the applicant plans to monitor, evaluate, and improve their results.

The development process is presently being tracked on a weekly, monthly and quarterly basis, to the completion of the contract. The Project Director will be responsible for the oversight of all development-

related processes – which will include, but not be limited to, contract procurement, timelines, and cost and fiscal management – and will work directly with the architect and other individuals associate with the project to ensure its completion, both in a timely manner and according to prior specifications. The Project Director will be overseen by the FVSAS and VSAS Boards of Directors, and any material deviations from specifications and schedules must be reported to and approved by both boards. Finally, all appropriate County and State agencies will certify completed work.

- 4. List the measure(s) of effectiveness that will be reported to the State agency through which grant funds are appropriated (the expending agency). The measure(s) will provide a standard and objective way for the State to assess the program's achievement or accomplishment. Please note that if the level of appropriation differs from the amount included in this application that the measure(s) of effectiveness will need to be updated and transmitted to the expending agency.**

FVSAS plans on breaking ground for the new facility by, or before, July 2016, and will work closely with the expending agency within the Department of Education to ensure the timely release of funds, which will keep the development of the VSAS campus on track.

III. Financial

Budget

1. **The applicant shall submit a budget utilizing the enclosed budget forms as applicable, to detail the cost of the request.**

Please see attached.

2. **The applicant shall provide its anticipated quarterly funding requests for the fiscal year 2017.**

Q1: July 1 – Sept. 30, 2016	Q2: Oct. 1 – Dec. 31, 2016	Q3: Jan. 1 – Mar. 31, 2017	Q4: Apr. 1 – June 30, 2017	TOTAL: FY 2016-2017
\$800,000	\$ 800,000	\$ 0	\$ 0	\$1,600,000

3. **The applicant shall provide a listing of all other sources of funding that they are seeking for fiscal year 2017.**

The Friends of The Volcano School of Arts & Sciences is not seeking any additional funding from the State for FY 2017. We are also presently applying for a \$700,000 loan from the USDA Rural Development Program for funding for this project. Total cost of the Keakealani Campus Development Project is \$6 million.

4. **The applicant shall provide a listing of all state and federal tax credits it has been granted within the prior three years. Additionally, the applicant shall provide a listing of all state and federal tax credits they have applied for or anticipate applying for pertaining to any capital project, if applicable.**

NOT APPLICABLE. The Friends of The Volcano School of Arts & Sciences is a 501c(3) not-for-profit and tax-exempt organization, and as such is not in receipt or possession of any state or federal tax credits.

5. **The applicant shall provide a listing of all federal, state, and county government contracts and grants it has been and will be receiving for program funding.**

\$618,000 per Act 106, Session Laws of Hawai'i 2012, for the plans and design of relocation of VSAS to the Keakealani campus in Volcano Village. Funds were released by the executive branch in April 2014.

\$285,000 per Act 119, Session Laws of Hawai'i 2015, for the planning, design and construction of a community kitchen facility on the Keakealani campus of VSAS. As of January 2016, these funds have yet to be released by the executive branch.

As stated above, FVSAS has a loan application pending with the USDA Rural Development Program for \$700,000.

- 6. The applicant shall provide the balance of its unrestricted current assets as of December 31, 2015.**

As of December 31, 2015, the VSAS's balance of unrestricted current assets was \$176,000.

IV. Experience and Capability

A. Necessary Skills and Experience

The applicant shall demonstrate that it has the necessary skills, abilities, knowledge of, and experience relating to the request. State your experience and appropriateness for providing the service proposed in this application. The applicant shall also provide a listing of verifiable experience of related projects or contracts for the most recent three years that are pertinent to the request.

FVSAS is presently writing a job description for the position of Project Director, who will oversee the development of the Keakealani campus for Volcano School of Arts & Sciences and its subsequent relocation in full to that campus following the completion of the project. While the job will be put to bid once the description is finalized and approved by the FVSAS Board of Directors, it is projected that his or her duties will include, but not be limited to:

- Oversight of project to its completion, which will include the coordination and direction of construction workers and subcontractors, and the project's compliance with all requisite and applicable safety and building regulations;
- Provision of an in-depth review prior to commencement of construction to ensure adherence to scheduled deliverables and stated estimates of costs, and to track inventory of tools and supplies;
- Ensure quality construction standards and the use of proper construction techniques;
- Daily review of the project's progress, including the provision of internal reports to the FVSAS Board and external reports to the community and / or relevant state and county agencies, as required, requested and / or determined.
- Meeting all contractual conditions of performance, including the negotiation of agreements and draft contracts, and the obtention of all project licenses and permits; and
- Proper risk mitigation to anticipate, prevent and resolve prospective problems; and resolve any emerging ones.

KALIMA CAYIR is presently serving as the interim Director of Education for The Volcano School of Arts & Sciences. She has eleven years of experience in both administration and teaching in the Hawai'i Public Charter School System, including eight years at VSAS and three years at the State Public Charter School Commission, which was formerly known as the Charter School Administrative Office.

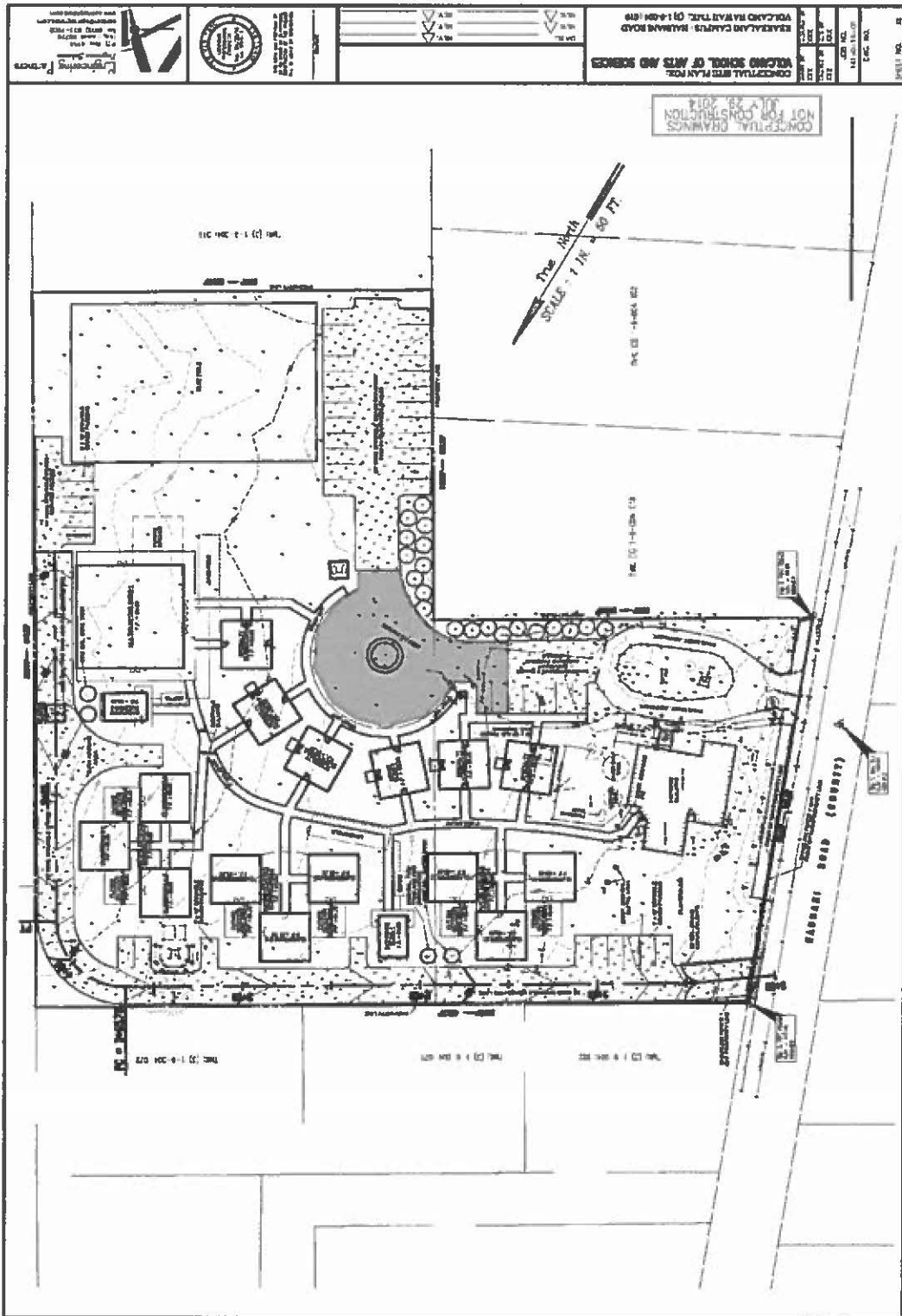
Ms. Cayir has worked closely with charter schools across the state as both Charter Academic Office and Title I Resource Teacher, and has served on Accreditation and other school review teams for both Hawai'i charter and Department of Education schools. Her areas of expertise include continuous school improvement models, positive discipline strategies, arts in education, and working with at risk, and high / special needs populations. She holds a M.Ed. in Educational Administration from the University of Hawai'i at Mānoa and a B.S. degree in Psychology from the University of Phoenix.

B. Facilities

The applicant shall provide a description of its facilities and demonstrate its adequacy in relation to the request. If facilities are not presently available, describe plans to secure facilities.

As stated in Section I, VSAS has signed a long-term lease with DLNR for the 3.15-acre site on Haunani Road, which is to be its Keakealani campus. The Keakealani campus project will modernize the historic existing school building in a manner that both enhances its historic status as a community landmark, and maintains the original intent of the family of the late Peter Lee, who in 1915 donated the property to the former Territory of Hawaii for the expressed purpose of building a public school for the greater Volcano community.

In addition to that existing structure, the new campus when completed will be able to accommodate up to 200 students and will consist of 14 separate 28'x28' classrooms, an administration building, a community kitchen with an adjacent 60'x-60' multipurpose building, outdoor learning spaces, and a playfield. The campus will also have 29 parking spaces, bike racks, and a roundabout which will allow parents and guardians to drop off their children safely and then depart the campus quickly and easily. Please see the engineering rendering of the proposed Keakealani campus, which is included in this section on the following page.



V. Personnel: Project Organization and Staffing

A. Proposed Staffing, Staff Qualifications, Supervision and Training

The applicant shall describe the proposed staffing pattern and proposed service capacity appropriate for the viability of the request. The applicant shall provide the qualifications and experience of personnel for the request and shall describe its ability to supervise, train and provide administrative direction relative to the request.

As stated prior, FVSAS is presently writing a job description for the position of Project Director, who will oversee the development of the Keakealani campus for The Volcano School of Arts & Sciences and its subsequent relocation in full to that campus following the completion of the project. The job will be put to bid once the description is finalized and approved by the FVSAS Board of Directors.

The proposed staffing pattern for the planning, design, and construction of the project includes a licensed architect who is already under contract by the Friends of The Volcano School of Arts & Sciences. The construction of the project will be executed by licensed contractors and other construction workers working under the direction of the licensed contractors.

B. Organization Chart

The applicant shall illustrate the position of each staff and line of responsibility/supervision. If the request is part of a large, multi-purpose organization, include an organization chart that illustrates the placement of this request.

The Friends of The Volcano School of Arts & Sciences is comprised of a 10-member board of directors, which is headed by a chair and three executive officers. It is the 501c(3) not-for-profit affiliate of the Volcano School, a public charter school.

C. Compensation

The applicant shall provide the annual salaries paid by the applicant to the three highest paid officers, directors, or employees of the organization by position.

The Friends of The Volcano School of Arts & Sciences is a not-for-profit organization composed entirely of volunteers. There is no paid staff.

VI. Other

A. Litigation

The applicant shall disclose any pending litigation to which they are a party, including the disclosure of any outstanding judgement. If applicable, please explain.

There is no litigation pending against either FVSAS or VSAS.

B. Licensure or Accreditation

The applicant shall specify any special qualifications, including but not limited to licensure or accreditation that the applicant possesses relevant to this request.

As a 501c(3) not-for-profit organization, the Friends of The Volcano School of Arts & Sciences is presently in good standing with both the State of Hawai'i and the federal government. The Volcano School of Arts & Sciences is fully accredited by the Western Association of Schools and Colleges.

C. Private Educational Institutions

The applicant shall specify whether the grant will be used to support or benefit a sectarian or non-sectarian private educational institution. Please see Article X, Section 1, of the State Constitution for the relevance of this question.

NOT APPLICABLE. The Friends of The Volcano School of Arts & Sciences is a 501c(3) not-for-profit organization that supports The Volcano School of Arts & Sciences, a public charter school under the jurisdiction of the Hawai'i Charter School Commission, which is an agency of the Hawai'i Department of Education.

D. Future Sustainability Plan

The applicant shall provide a plan for sustaining after fiscal year 2016-17 the activity funded by the grant if the grant of this application is:

- (1) Received by the applicant for fiscal year 2016-17, but**
- (2) Not received by the applicant thereafter.**

NOT APPLICABLE. Per the finding of the legislature, the planning, design and construction of the VSAS Keakealani campus qualifies as a capital project. No further funding will be necessary once it is completed.

E. Certificate of Good Standing (If the Applicant is an Organization)

If the applicant is an organization, the applicant shall submit one (1) copy of a certificate of good standing from the Director of Commerce and Consumer Affairs that is dated no earlier than December 1, 2015.

Please see attached.

BUDGET REQUEST BY SOURCE OF FUNDS

Period: July 1, 2016 to June 30, 2017

Applicant: Friends of the Volcano School of Arts & Sciences

BUDGET CATEGORIES	State Funds Requested FY17 (a)	Total Federal Funds Requested (b)	Other State Funds FY12 & 15 (c)	Total Private/Other Funds Requested (d)
A. PERSONNEL COST				
1. Salaries				
2. Payroll Taxes & Assessments				
3. Fringe Benefits				
TOTAL PERSONNEL COST				
B. OTHER CURRENT EXPENSES				
1. Airfare, Inter-Island				
2. Insurance				
3. Lease/Rental of Equipment				
4. Lease/Rental of Space				
5. Staff Training				
6. Supplies				
7. Telecommunication				
8. Utilities				
9. Planning & Design			618,000	
10. Construction	1,600,000	700,000	285,000	2,647,000
11. Project Management				150,000
12.				
13.				
14.				
15.				
16.				
17.				
18.				
19.				
20.				
TOTAL OTHER CURRENT EXPENSES	1,600,000	700,000	903,000	2,797,000
C. EQUIPMENT PURCHASES				
D. MOTOR VEHICLE PURCHASES				
E. CAPITAL				
TOTAL (A+B+C+D+E)	1,600,000	700,000	903,000	2,797,000
SOURCES OF FUNDING		Budget Prepared By:		
(a) Total State Funds Requested	1,600,000	Kalima Cayir Director, VSAS 808-985-9800		
(b) Total Federal Funds Requested	700,000	Name (Please type or print) Phone		
(c) Other State Funds FY12 & FY15	903,000	[Redacted Signature]		
(d) Total Other Funds Requested	2,797,000	Date 1-15-16		
TOTAL BUDGET	6,000,000	Amalie Dorn Chair, FVSAS 808-985-9901		
		Name and Title (Please type or print)		

BUDGET JUSTIFICATION - PERSONNEL SALARIES AND WAGES

Period: July 1, 2016 to June 30, 2017

Applicant: Friends of the Volcano School of Arts & Sciences

POSITION TITLE	FULL TIME EQUIVALENT	ANNUAL SALARY A	% OF TIME ALLOCATED TO GRANT REQUEST B	TOTAL STATE FUNDS REQUESTED (A x B)
Not applicable				\$ -
				\$ -
				\$ -
				\$ -
				\$ -
				\$ -
				\$ -
				\$ -
				\$ -
				\$ -
				\$ -
				\$ -
				\$ -
				\$ -
				\$ -
TOTAL:				
JUSTIFICATION/COMMENTS: This project will not require personnel for its execution or completion. Therefore, no personnel costs are associated with this project.				

BUDGET JUSTIFICATION - EQUIPMENT AND MOTOR VEHICLES

Period: July 1, 2016 to June 30, 2017

Applicant: The Friends of the Volcano School of,

DESCRIPTION EQUIPMENT	NO. OF ITEMS	COST PER ITEM	TOTAL COST	TOTAL BUDGETED
None.			\$ -	
			\$ -	
			\$ -	
			\$ -	
			\$ -	
TOTAL:				
JUSTIFICATION/COMMENTS:				

DESCRIPTION OF MOTOR VEHICLE	NO. OF VEHICLES	COST PER VEHICLE	TOTAL COST	TOTAL BUDGETED
None.			\$ -	
			\$ -	
			\$ -	
			\$ -	
			\$ -	
TOTAL:				
JUSTIFICATION/COMMENTS:				

BUDGET JUSTIFICATION - CAPITAL PROJECT DETAILS

Period: July 1, 2016 to June 30, 2017

Applicant: Friends of the Volcano School
of Arts & Sciences

FUNDING AMOUNT REQUESTED						
TOTAL PROJECT COST	ALL SOURCES OF FUNDS RECEIVED IN PRIOR YEARS		STATE FUNDS REQUESTED	OF FUNDS REQUESTED	FUNDING REQUIRED IN SUCCEEDING YEARS	
	FY: 2014-2015	FY: 2016-2016	FY:2016-2017	FY:2016-2017	FY:2017-2018	FY:2018-2019
PLANNING & DESIGN	618000					
LAND ACQUISITION						
PROJECT MANAGEMENT				150000		
CONSTRUCTION		285000	1600000	3347000		
EQUIPMENT						
TOTAL:	618000	285000	1,600,000	3,497,000		
JUSTIFICATION/COMMENTS:						

GOVERNMENT CONTRACTS AND/OR GRANTS

Applicant: Friends of the Volcano School of Arts & Sciences

	CONTRACT DESCRIPTION	EFFECTIVE DATES	AGENCY	GOVERNMENT ENTITY (U.S. / State / Haw / Hon / Kau / Mau)	CONTRACT VALUE
1.	Volcano School of Arts & Sciences – Planning and Design	July 1, 2013–June 30, 2016	Dept. of Education	State of Hawaii	\$618,000
2.					
3.					
4.					
5.					
6.					
7.					
8.					
9.					
10.					
				TOTAL	\$618,000

**DECLARATION STATEMENT OF
APPLICANTS FOR GRANTS PURSUANT TO
CHAPTER 42F, HAWAII REVISIED STATUTES**

The undersigned authorized representative of the applicant certifies the following:

- 1) The applicant meets and will comply with all of the following standards for the award of grants pursuant to Section 42F-103, Hawaii Revised Statutes:
 - a) Is licensed or accredited, in accordance with federal, state, or county statutes, rules, or ordinances, to conduct the activities or provide the services for which a grant is awarded;
 - b) Complies with all applicable federal and state laws prohibiting discrimination against any person on the basis of race, color, national origin, religion, creed, sex, age, sexual orientation, or disability;
 - c) Agrees not to use state funds for entertainment or lobbying activities; and
 - d) Allows the state agency to which funds for the grant were appropriated for expenditure, legislative committees and their staff, and the auditor full access to their records, reports, files, and other related documents and information for purposes of monitoring, measuring the effectiveness, and ensuring the proper expenditure of the grant.
- 2) If the applicant is an organization, the applicant meets the following requirements pursuant to Section 42F-103, Hawaii Revised Statutes:
 - a) Is incorporated under the laws of the State; and
 - b) Has bylaws or policies that describe the manner in which the activities or services for which a grant is awarded shall be conducted or provided.
- 3) If the applicant is a non-profit organization, it meets the following requirements pursuant to Section 42F-103, Hawaii Revised Statutes:
 - a) Is determined and designated to be a non-profit organization by the Internal Revenue Service; and
 - b) Has a governing board whose members have no material conflict of interest and serve without compensation.

Pursuant to Section 42F-103, Hawaii Revised Statutes, for grants used for the acquisition of land, when the organization discontinues the activities or services on the land acquired for which the grant was awarded and disposes of the land in fee simple or by lease, the organization shall negotiate with the expending agency for a lump sum or installment repayment to the State of the amount of the grant used for the acquisition of the land.

Further, the undersigned authorized representative certifies that this statement is true and correct to the best of the applicant's knowledge.

Friends of The Volcano School of Arts & Sciences

1-15-16

(Date)

AMALIE DORN

(Typed Name)

Chair, FVSAS

(Title)



Department of Commerce and Consumer Affairs

CERTIFICATE OF GOOD STANDING

I, the undersigned Director of Commerce and Consumer Affairs of the State of Hawaii, do hereby certify that

FRIENDS OF THE VOLCANO SCHOOL OF ARTS & SCIENCES

was incorporated under the laws of the State of Hawaii on 03/01/2000 ; that it is an existing nonprofit corporation; and that, as far as the records of this Department reveal, has complied with all of the provisions of the Hawaii Nonprofit Corporations Act, regulating domestic nonprofit corporations.

IN WITNESS WHEREOF, I have hereunto set my hand and affixed the seal of the Department of Commerce and Consumer Affairs, at Honolulu, Hawaii.

Dated: January 19, 2016



Director of Commerce and Consumer Affairs

