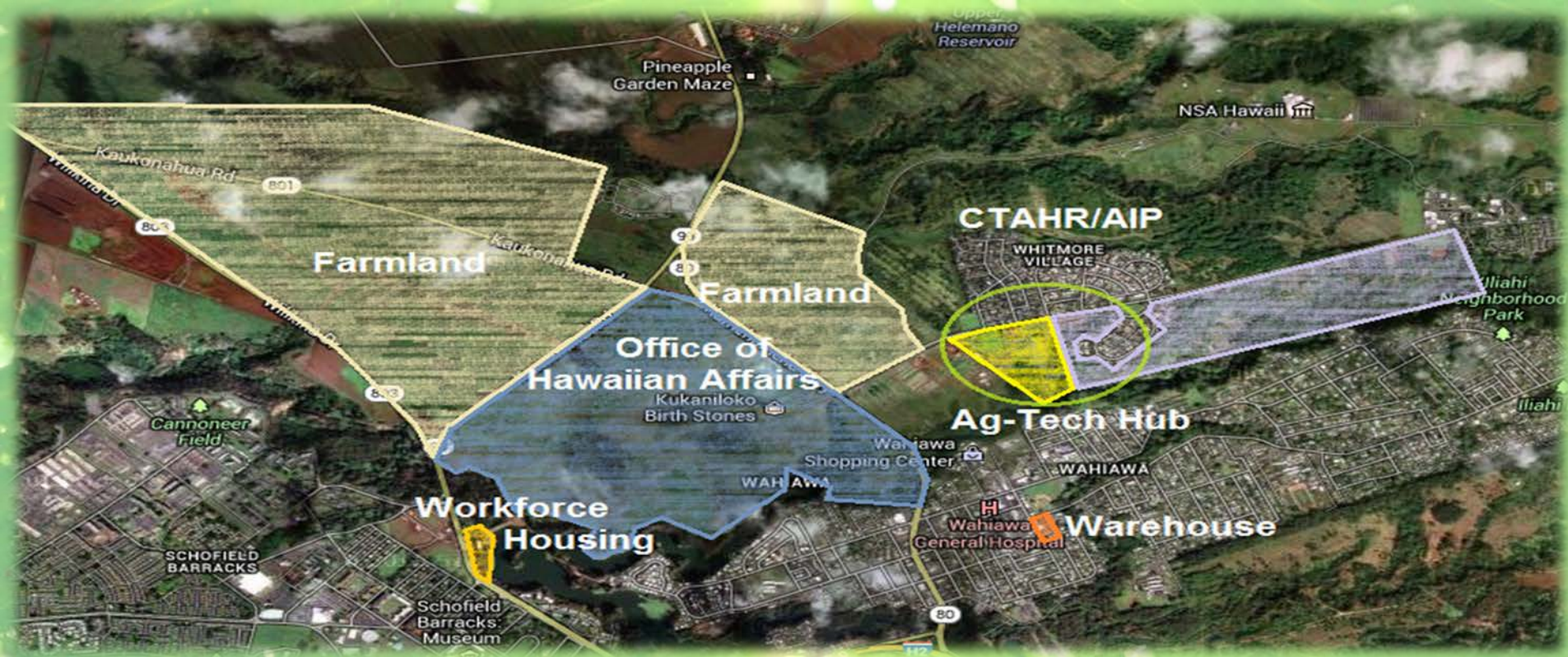




The Whitmore Project:

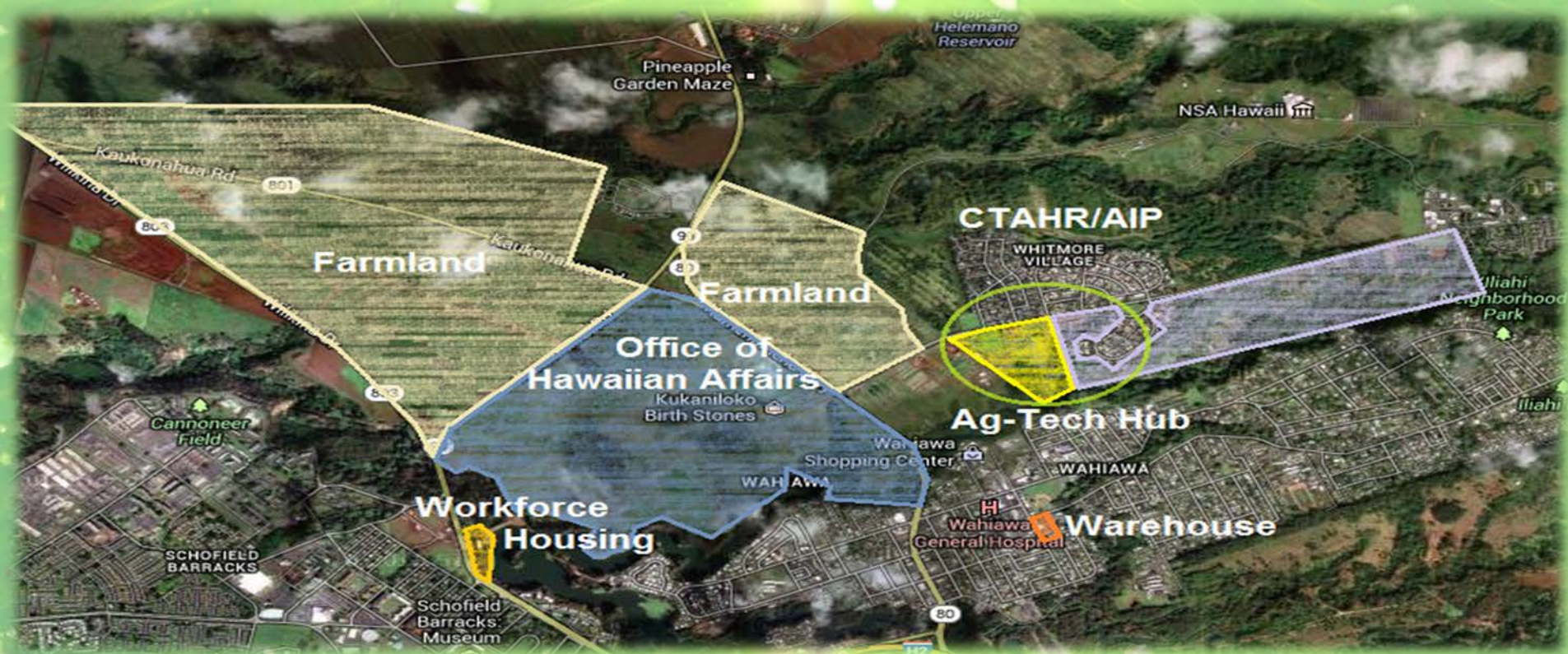
Whitmore Village Agricultural Development Project





What is The Whitmore Project?

- The Whitmore Project is a detailed plan to revitalize our local ag industry by bringing farmers and the state together to increase local food production, create jobs, engage in partnerships, and to provide affordable housing. The Whitmore Project truly provides a **live, work, and play** environment.



Components of The Whitmore Project:

- **Farmland:** 1,200 acres leased to farmers from the Agribusiness Development Corporation.
- **Office of Hawaiian Affairs:** 500 acres of farmland owned by OHA
- **Agricultural Hub:** Ag-Industrial Park will include food safety, packaging and processing facilities, and office space.
- **Warehouse:** Formally the Tamura's Warehouse, this structure will be retrofitted for additional food safety, packaging and processing, storage, and office space.
- **Workforce Housing:** A public-private partnership with the Hawaii Housing Finance Development Corporation will provide housing for farmers.

Who is the Agribusiness Development Corporation?

The fading of the sugar and pineapple industries has left the ag industry limping. Local people lost their jobs and active farmlands became inactive. To address these issues and challenges, the State established the Agribusiness Development Corporation (ADC).

The agency's main goals are to:

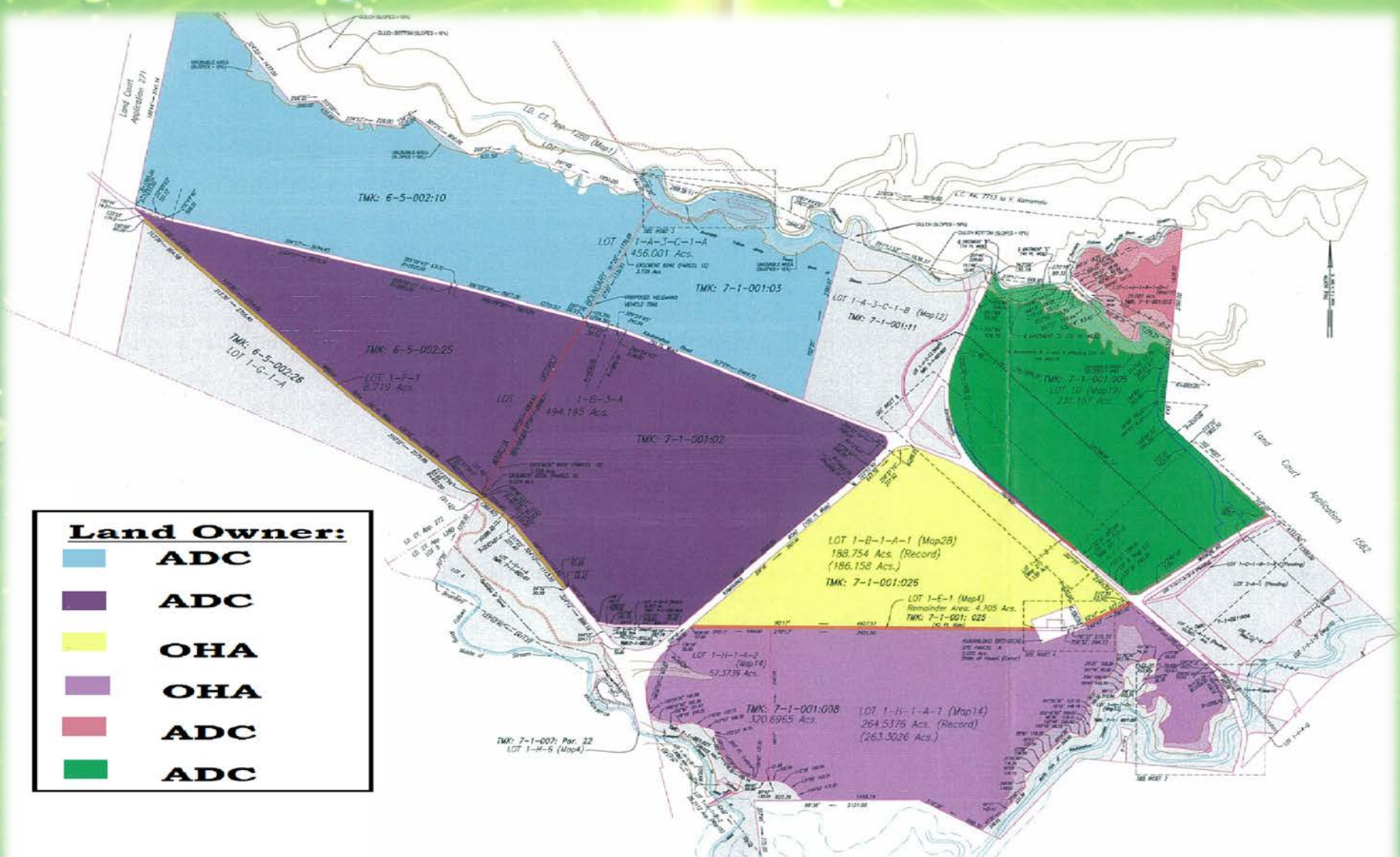
- Help with the transition of former plantation lands and water systems to diversify our ag industry.
- Initiate the development and support of ag facilities to assist our farmers.
- Provide solutions to issues facing our ag industry.

Breaking the Project Down

The Whitmore Project may assist farmers via:

- Long-term lease options
- Decrease cost and time of transportation and shipping due to centralized location
- Retrofitting existing facilities to comply with the handling, preparation, and storage (Food Safety Regulations)
- Converting arable land into active land and achieving scale and diversity of products
- Providing co-op opportunities to leverage the high cost of equipment and supplies
- Providing workforce housing –partnership with HHFDC
- Engaging in Public-Private Partnerships

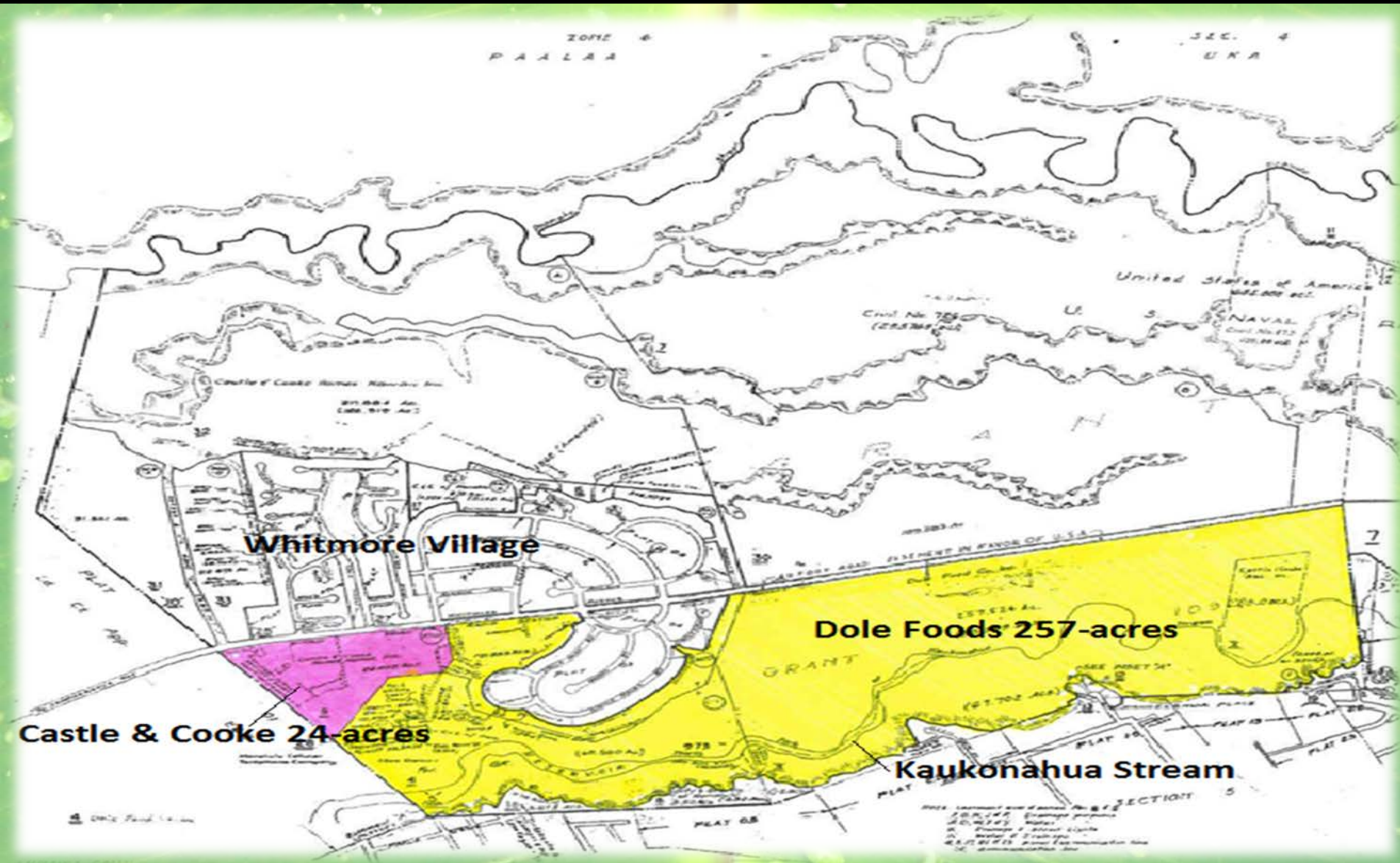
Current Farmland Inventory



Land Owner:

Light Blue	ADC
Purple	ADC
Yellow	OHA
Light Purple	OHA
Pink	ADC
Green	ADC

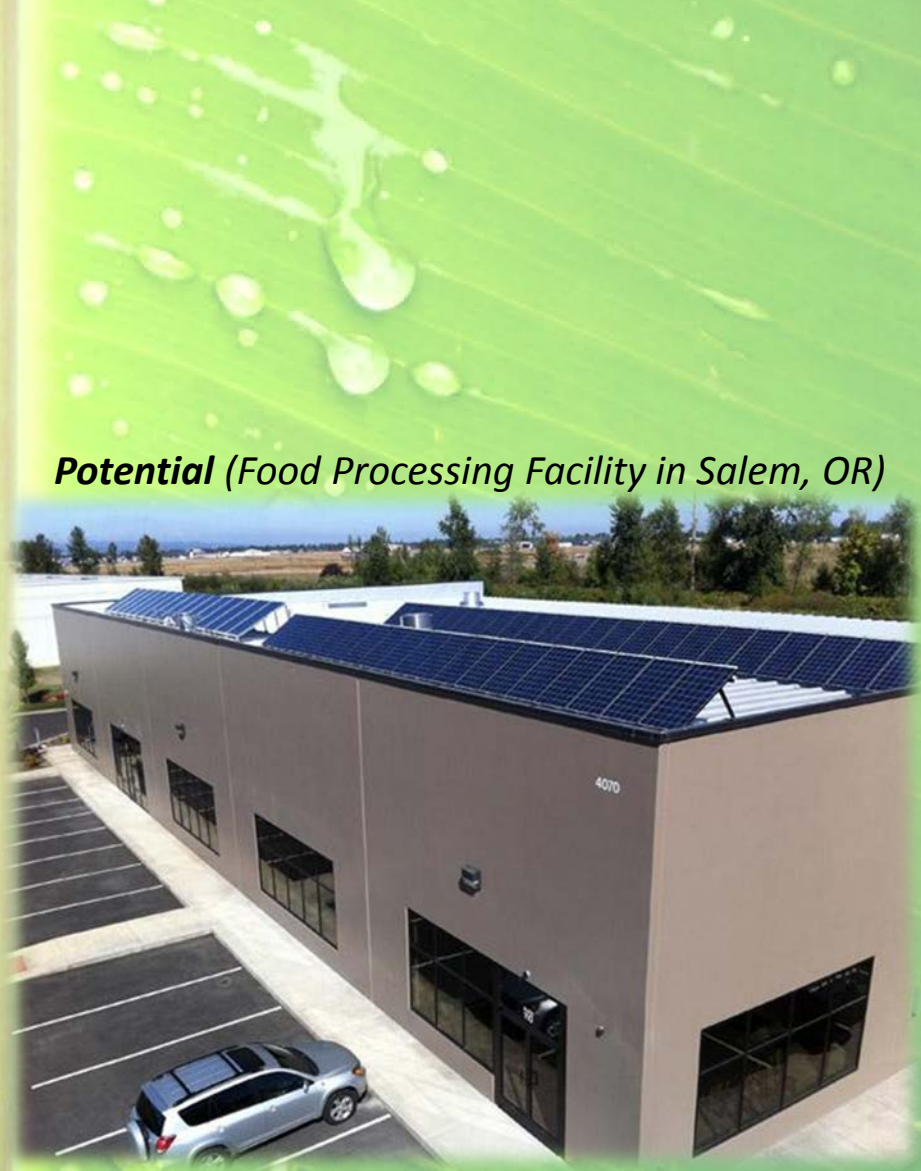
Ag Industrial Hub



Ag Industrial Hub



Current Condition



Potential (Food Processing Facility in Salem, OR)

Ag Industrial Hub



Food Safety

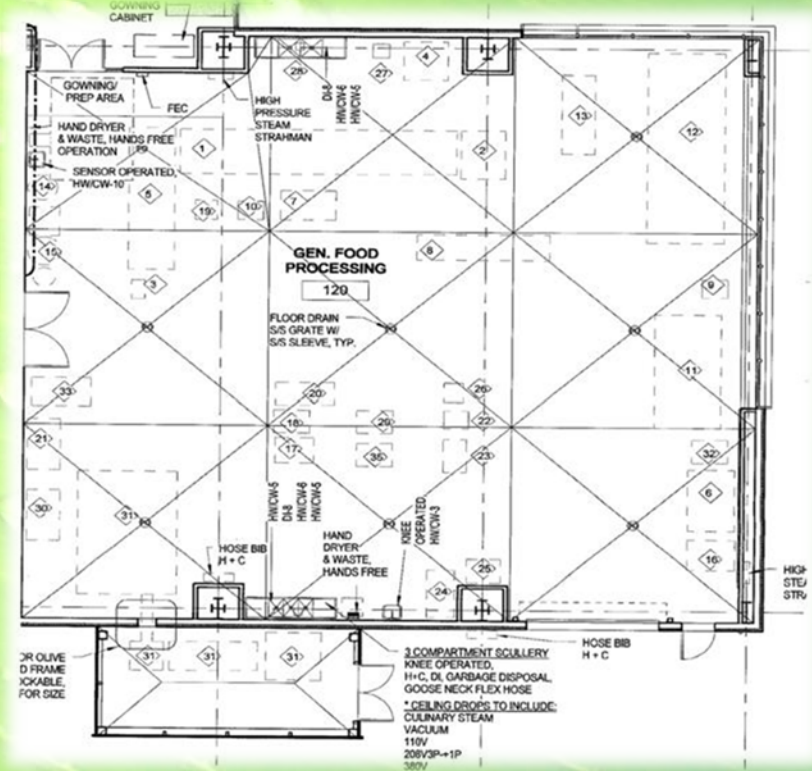
- Processing & Packaging
- Co-Op opportunities
 - Shared facilities reduced operational cost

Warehouse



Warehouse

- Additional packing, processing, and storing space
- Additional office space



Ag-Technology Jobs



Oregon Agri-Tech

- The Ag Industrial Hub would also become an Ag-Tech Park through the Hi-Tech Development Corporation. This park would house software and manufacturing companies that develop technology and equipment for farmers.



HHFDC: Workforce Housing

- The Hawaii Housing Finance Development Corporation owns land next to Kemoo by the Lake which provides opportunity for workforce housing.



COORDINATION

Dept. of
Environmental
Services

Wastewater Outfall

HI-Tech Development
Corporation

Ag-Tech applications;
Food Safety
applications

Wahiawa Community
Based Development
Organization

ADC

Commercial Farmers;
Packaging & Processing;
Distribution; Marketing

Hawaii Housing
Finance Development
Corporation

Workforce Housing

Dept. of Education

Academy Licensing
Program;
Workforce Readiness

Dept. of Agriculture

Academy Licensing
Program; Workforce
Readiness

College of Tropical
Agriculture and
Human Resources

Research &
Development;
Troubleshoot; Patent;
New Farmer Program

Agribusiness
Incubator Program

New Farmer Program
= Skilled Workforce

Dept. of Education: Workforce Readiness

- Education & Workforce Pipeline
 - Academy Licensing
 - Collaboration between farmers and the Dept. of Education would create programs that educate and train high school students and prepare them for jobs immediately upon graduating high school.



College of Tropical Agriculture and Human Resources

- Research & Development
 - Troubleshoot
 - Patent
 - New Crops
 - Value-added Crops



NICHE CROPS: Value-Added Products

- Niche crops are the most sought after and revenue generating crops. Within every town in Hawaii there is a microclimate that certain niche crops thrive in. Products like Kona Coffee and Kula Lavender attract visitors to the region which in turn helps other small businesses.



- If every rural town had one crop, the State would have an inventory of value-added products creating destinations for ag-tourism bringing visitors to the islands.



Collaborative Effort



August 20, 2012

Senator Donovan Dela Cruz
State Capitol, Room 202
415 South Beretania Street
Honolulu, Hawaii 96813

Dear Senator Dela Cruz:

The Wahiawa Community and Business Association (WCBA) would like thank you for taking the time to present your Whitmore Village Agricultural Development Plan (WVADP) at our June 13, 2012 board meeting.

Historically, the WCBA has been a strong supporter of agricultural base economic development in our district and we view the WVADP as having great potential. Acquiring the 24-acre parcel in Whitmore Village for packing and processing facilities is a critical component of the plan. It will allow farmers on the former Galbraith Trust Lands to be more competitive by bringing efficiency to their operations.

The board voted unanimously to support all the action items with exception to item 3, transfer of DOA Kunia parcels to ADC. It is our understanding that DOA plans to lease those Kunia parcels sometime in the near future.

We commend you for the development and your stewardship of this visionary plan for our district. We look forward to assisting you in the future as you move into the execution phase.

Respectfully,

Walter R. Benaytiz
President

Daniel S. Nakasone
1st Vice President

Wahiawa Community & Business Association, Inc.
P.O. Box 861408, Wahiawa, Hawaii 96786
Phone: (808) 621-6531

Initiatives under way by the administration.



EXECUTIVE CHAMBERS
HONOLULU

August 29, 2012

MR. ABERCROMBIE
GOVERNOR

The Honorable Donovan M. Dela Cruz
Senator, District 22
State Capitol, Room 202
Honolulu, HI 96813

The Honorable Malama Solomon
Senator, District 1
State Capitol, Room 207
Honolulu, HI 96813

Dea: Senators Dela Cruz and Solomon:

Thank you for sharing your vision for the Whitmore Village Agricultural Development Plan in your letters of July 6 and July 12. You will be pleased to know that there are initiatives under way by the administration to address your concerns and ideas.

I would first like to acknowledge and thank the legislature for the role it has played in the acquisition of the Galbraith Estate Lands which total 1781 acres. Funding sources for the \$25 million purchase include the State general obligation bond, the Office of Hawaiian Affairs (OHA), the Department of Defense Readiness and Environmental Protection Initiative, the City and County of Honolulu Clean Water and Natural Lands Program, the private donors through The Trust for Public Land, and coordination provided by the Agribusiness Development Corporation (ADC) and the Department of Agriculture (DOA) with the anticipation of finalizing the purchase of these lands in October. As you know, ADC has primary responsibility for developing and managing these lands and has begun the process of identifying priority actions to include: site preparation for 236 acres to be parceled out to several individual farmers, development of irrigation infrastructure to serve the entire parcel, and discussions with OHA about collaborative efforts to promote agriculture on 555 acres.

SLH 2003), Executive Order 4409 was
three parcels
DOA. DOA
culture meeti

Castle & Cooke
Hawaii's

August 31, 2012

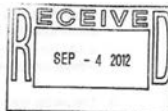
Mr. James J. Nakatani
Executive Director
Agribusiness Development Corporation
235 Beretania Street, Room 205
Honolulu, Hawaii 96813

Subject: Whitmore Land for State Agricultural Park program
TMK: (1) 7-1-002-099-000
Approximately 24 acres

Dear Mr. Nakatani:

This letter follows up on your letter of intent dated July 6, 2012, and related meetings with Beverly Kaku and Carleton Ching of Castle & Cooke in respect of the 24 acre Whitmore parcel.

Castle & Cooke is very interested in working with the Agribusiness Development Corporation (ADC) to promote diversified agriculture programs in the State of Hawaii. Castle & Cooke is historically one of Hawaii's major land owners, and we have served the needs of Hawaii's residents through balanced stewardship of our land assets. This includes the promotion of diversified agriculture as one of our historical, core businesses, as well as providing new homes and commercial amenities for Hawaii families, and pursuing renewable energy programs that will reduce our dependence on foreign oil.



Historically, the WCBA has been a strong supporter of agricultural base economic development in the district and view the Whitmore Project as having great potential.

Castle & Cooke is very interested in working with ADC to promote diversified agriculture programs in the State of Hawaii.

Communications: Media

[Special Fund Could Help Save Galbraith lands for Agriculture \(06/22/2008\)](#)

[State to Purchase Agricultural Land in Wahiawa \(04/25/2012\)](#)

[Investment in Agriculture Big for Central Oahu \(06/13/2012\)](#)

[Helping Farmers is Important for Hawaii's Future \(09/12/2012\)](#)

[Heirs Preserve Hawaiian Tract \(11/18/2012\)](#)

[State Gets Closer to Purchasing Galbraith Land in Central Oahu \(11/19/2012\)](#)

[Hawaii Set to Spend Millions of Dollars to Boost Local Farming \(11/27/2012\)](#)

[Galbraith Estate in Central Oahu Protected for Farming \(12/11/2012\)](#)

[Galbraith Estate Land Purchase Preserves 1,700 Acres for Ag Use \(12/11/2012\)](#)

[State Buys Galbraith Estate for Agriculture Use \(12/11/2012\)](#)

[TPL, OHA Gain Control of Galbraith Estate \(12/11/2012\)](#)

[Purchase of Galbraith Land Should Boost Area Farming \(12/20/2012\)](#)

[State Plan Aims to Turn Wahiawa into Agricultural Hub \(02/28/2013\)](#)

<http://www.hawaiinewsnow.com/story/21432720/state-plan-aims-to-turn-wahiawa-into-agricultural-hub?autoStart=true&topVideoCatNo=default&clipId=8524299>

[Hawaii Ready to Put Estate Lands to Work \(03/01/2013\)](#)

[Senator Donovan M. Dela Cruz Introduces Senate Resolution 133 urging the State to Purchase Land from Dole Food Company \(03/25/2013\)](#)

[State Releases Much Needed Construction Funds \(04/24/2013\)](#)

Progress: Completed & Ongoing

Completed:

- ✓ Purchase 1,700 acres of Galbraith Estate land
- ✓ Purchase of Tamura Warehouse parcel
- ✓ Purchase of 24-acre Castle & Cooke parcel
- ✓ Public-Public Partnerships with:
 - ✓ HTDC
 - ✓ HHFDC
 - ✓ Agribusiness Incubator Program

Pending:

- Purchase of 257-acre Dole Food Company, Inc. parcel
- Enter into Contractual Agreements with:
 - CTAHR
 - DOE
 - City & County of Honolulu –Dept. of Environmental Services
 - WCBDO

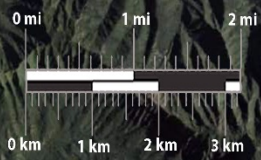
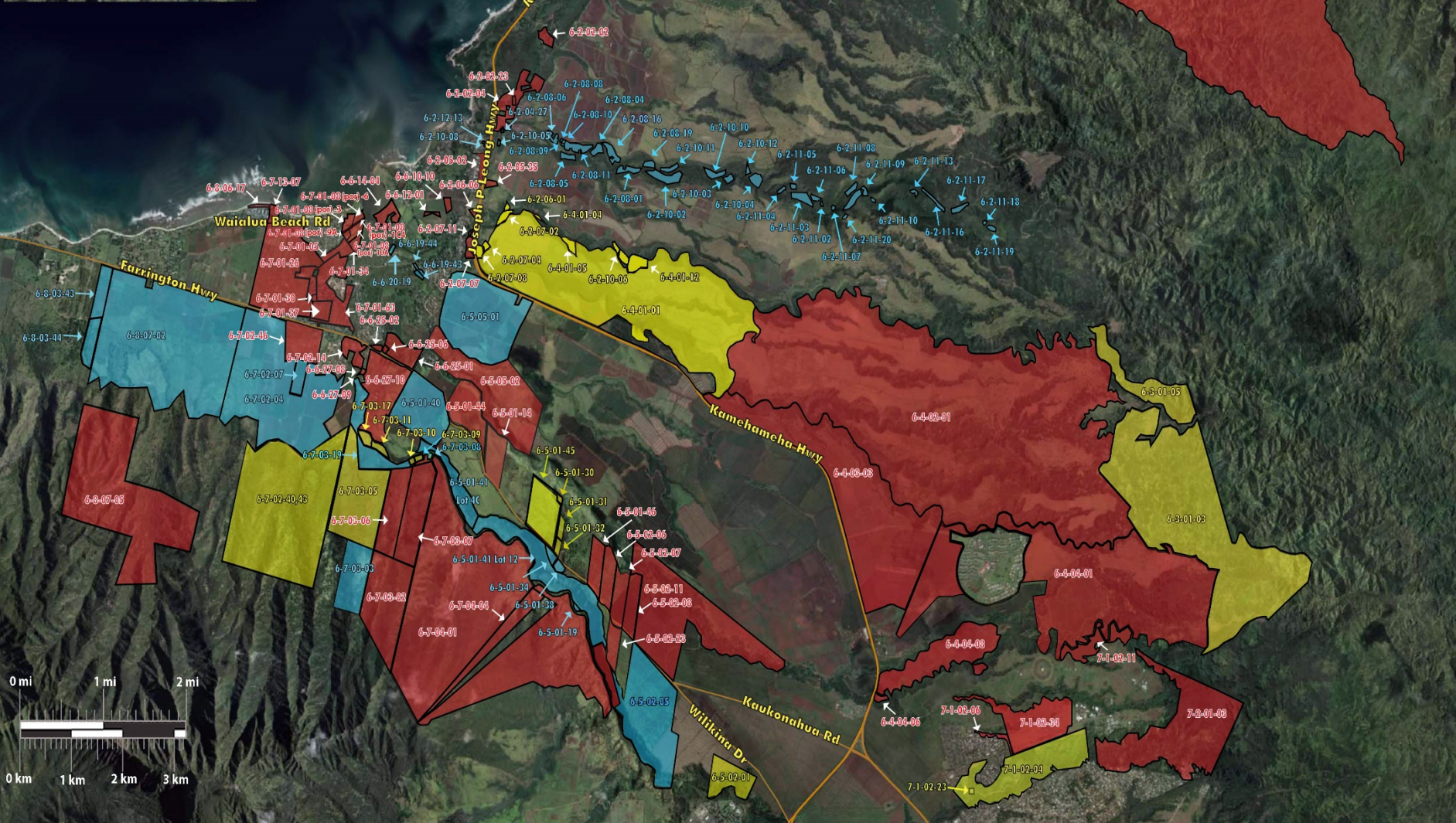
Continuing:

- Purchasing available parcels from Dole Food Company, Inc.
- Identifying and collaborating with various stakeholders
- Design and plan water pump irrigation system
- Design and plan of ag-technology park

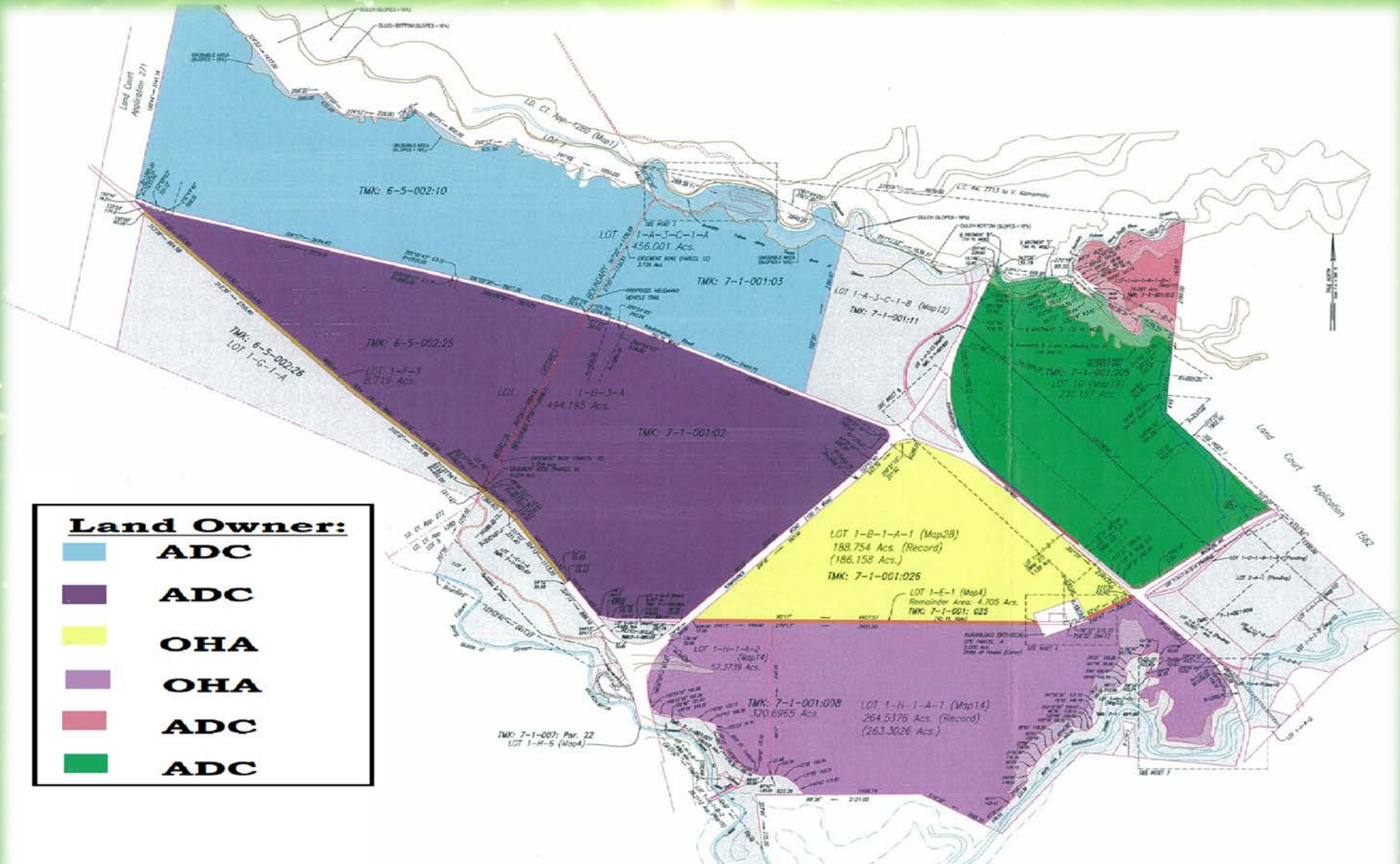
- **SB2020: Ag Foreign Trade Zone**
- **SB2397: Ag-Technology Park**
- **SB2400: New Farmer Program**
- **SB3065: Land Exchange**



- Available
 - Under Contract
 - Sold
- Pacific Ocean



Farmland



Ag Industrial Hub

