

House District _____

Senate District _____

**THE TWENTY-EIGHTH LEGISLATURE
APPLICATION FOR GRANTS
CHAPTER 42F, HAWAII REVISED STATUTES**

Log No: _____

For Legislature's Use Only

Type of Grant Request:

GRANT REQUEST - OPERATING

GRANT REQUEST - CAPITAL

"Grant" means an award of state funds by the legislature, by an appropriation to a specified recipient, to support the activities of the recipient and permit the community to benefit from those activities.

"Recipient" means any organization or person receiving a grant.

STATE DEPARTMENT OR AGENCY RELATED TO THIS REQUEST (LEAVE BLANK IF UNKNOWN): _____

STATE PROGRAM I.D. NO. (LEAVE BLANK IF UNKNOWN): _____

1. APPLICANT INFORMATION:

Legal Name of Requesting Organization or Individual:
Polynesian Voyaging Society

Db: Polynesian Voyaging Society

Street Address: 10 Sand Island Parkway, Honolulu, HI 96819

Mailing Address: 10 Sand Island Parkway, Honolulu, HI 96819

2. CONTACT PERSON FOR MATTERS INVOLVING THIS APPLICATION:

Name TRICIA W. DANG

Title Fund Development Director

Phone # (808) 542-9251

Fax # (808) 842-1112

E-mail tricia@pvshawaii.org

3. TYPE OF BUSINESS ENTITY:

- NON PROFIT CORPORATION INCORPORATED IN HAWAII
- FOR PROFIT CORPORATION INCORPORATED IN HAWAII
- LIMITED LIABILITY COMPANY
- OTHER
- SOLE PROPRIETORSHIP/INDIVIDUAL

6. DESCRIPTIVE TITLE OF APPLICANT'S REQUEST:

MALAMA HONUA WORLDWIDE VOYAGE

4. FEDERAL TAX ID #: _____

5. STATE TAX ID #: _____

7. AMOUNT OF STATE FUNDS REQUESTED:

FISCAL YEAR 2016: \$ 500,000

8. STATUS OF SERVICE DESCRIBED IN THIS REQUEST:

- NEW SERVICE (PRESENTLY DOES NOT EXIST)
- EXISTING SERVICE (PRESENTLY IN OPERATION)

SPECIFY THE AMOUNT BY SOURCES OF FUNDS AVAILABLE AT THE TIME OF THIS REQUEST:

STATE \$85,000 & \$450,000 (PENDING)

FEDERAL \$13,690 (PREL)

COUNTY \$0

PRIVATE/OTHER \$1.5M (APPROXIMATE)

TYPE NAME & TITLE OF AUTHORIZED REPRESENTATIVE:

AUTHORIZED SIGNATURE

CLYDE W. NAMUO, CHIEF EXECUTIVE OFFICER

NAME & TITLE

JANUARY 29, 2015

DATE SIGNED



RECEIVED
1-30-15

VS

Application for Grants

If any item is not applicable to the request, the applicant should enter "not applicable".

I. Background and Summary

This section shall clearly and concisely summarize and highlight the contents of the request in such a way as to provide the State Legislature with a broad understanding of the request. Please include the following:

1. A brief description of the applicant's background;

The Polynesian Voyaging Society (PVS), a non-profit 501(c)(3) founded in 1973 was established to learn and share, and perpetuate the art and science of traditional Polynesian voyaging and the spirit of exploration through experiential education that inspires learners and their communities.

Over the last 42 years, PVS has built two voyaging canoes (Hōkūleʻa and Hawaiʻiloa) and conducted major, open-ocean voyages in the Pacific to practice and perpetuate wayfinding and voyaging traditions. During this time, PVS gained traditional voyaging experience across more than 140,000 miles of the Pacific Ocean (the equivalent to 6 times around the earth), and over the past 36 years, Master Navigator (and PVS president) Nainoa Thompson has inspired and led a revival of the traditional arts associated with long-distance ocean voyaging in Hawaiʻi throughout the Pacific, and around the world. PVS and Hōkūleʻa have inspired more than 25 long-distance voyaging canoes and organizations across the Pacific and continue to be leaders in exploration, provide inspiration throughout the Hawaiian and Pacific Island community, inspire the growth of the voyaging ʻohana, and create catalytic effects in pride of indigenous knowledge, educational reform, and eco-cultural awareness and action.

Today, Hōkūleʻa and her sister canoe, Hikianalia, use the same traditional knowledge and techniques as they navigate on the Mālama Honua Worldwide Voyage (WWV). Commencing in 2013, the WWV shall continue through 2017. During this voyage, we will use two waʻa kaulua –double-hulled, long-distance voyaging canoes – as floating classrooms that bridge culture, tradition and indigenous knowledge with modern technology and educational opportunities. With a focus on education and *mālama honua* – caring for Earth, the canoes will be models of island (Island Earth) sustainability, exemplify the importance of shared knowledge and learning and will be platforms for exploration and connection. We seek to share "Island Wisdom, Ocean Connections, Global Lessons".

<p style="text-align: center;">Polynesian Voyaging Society Founded in 1973</p> <p>Mission: Founded on a legacy of Pacific Ocean exploration, the Polynesian Voyaging Society seeks to perpetuate the art and science of traditional Polynesian voyaging and the spirit of exploration through experiential educational programs that inspire students and their communities to respect and care for themselves, one another, and their natural and cultural environments.</p> <p>Vision: Hawai'i, our special island home, is a place where the land and sea are cared for, and people and communities are healthy and safe,</p>	<p style="text-align: center;">Mālama Honua Worldwide Voyage 2013-2017</p> <p>Mission: Mālama Honua - <i>Care for the Earth</i></p> <p>Vision: Navigating Island Earth to a peaceful, healthy shore</p> <p>Challenge & Purpose: To become a catalyst for positive change in Hawai'i by constantly learning from and nurturing relationships worldwide that share the values of, and responsibility for, caring for Island Earth, her oceans and children, while honoring our heritage and perpetuating our culture.</p>
---	---

2. The goals and objectives related to the request;

The WWV is tied to both Hawai'i and to Island Earth: Cultural knowledge, Leadership, Ocean/Environment awareness, Voyaging skills, and Education ("CLOVE", as in a clove hitch knot, which is a fundamental sailing knot). Using the theme of "CLOVE"- we journey to various ports and continue to build on the lessons and experiences at home in Hawai'i, keeping the WWV, its purpose, and our voyaging values alive. The following are the goals and objectives of the WWV:

IN HAWAI'I:

- Reach out and involve Hawai'i communities in the WWV
 - Objective: Practice and promote Hawaiian culture and values on the canoes, throughout the world
- Share and celebrate the wisdom and traditions of our kupuna
 - Objective: Model leadership and mentor Hawai'i's youth
- Raise awareness of the issues confronting Hawai'i's shorelines, reefs, and deep waters
 - Objective: Honor and share Hawaiian knowledge and practices of natural resource management
- Perpetuate traditional navigation and ocean voyaging throughout Hawai'i
 - Objective: Celebrate the legacy of voyaging in the Pacific
- Inspire youth to care for their communities; implement WWV curricula in schools throughout Hawai'i, connecting students to places and cultures around the world
 - Objective: Foster place-based, land-based models of education

VOYAGING ISLAND EARTH:

- Seek out indigenous cultures, and celebrate diversity around the world
 - Objective: Engage in cultural protocols and exchanges with hosting communities
- Seek out and celebrate stories of role models, in environmental stewardship, cultural perpetuation, and education
 - Objective: Identify and share innovative policies and practices
- Raise awareness of the importance of ocean protection for the survival of life on earth; learn about and engage in others' efforts

- Objective: Learn about and engage in others' efforts
- Establish unity among all who are linked by oceans
 - Objective: Celebrate voyaging and navigating traditions around the world
- Share curricula and lessons inspired by the WWV with schools and communities around the world; inspire youth to care for their lands and communities
 - Objective: Learn best practices from others in land- and values-based education

3. The public purpose and need to be served;

The purpose of the multi-year Mālama Honua Worldwide Voyage (WWV) is to become a catalyst for positive change in Hawai'i by constantly learning from and nurturing relationships worldwide that share the values of, and responsibility for, caring for Island Earth, while honoring our heritage and perpetuating our culture.

PVS strives to create a breadth of experiential education engagements, in person and virtually, that positively impacts an individual's life voyage, whether on the open-ocean or simply in the way they guide their lives. We work to support the values and lessons of mālama honua - *care for our Earth*, through learning opportunities that will be promoted even after the canoes return home.

4. Describe the target population to be served; and

The target population includes the State of Hawaii and Island Earth. Through multi-media and virtual information sharing, the effort is global, yet grounded in Hawai'i. The effort brings together communities by perpetuating navigation skills that extend beyond the canoes, and perspectives that enrich our everyday lives and learning. By exchanging best bets and creating opportunities to unify complex issues that impact future generations, the Voyage seeks to inspire ourselves, one another, and communities to take action.

On the ground, in Hawai'i and globally, communities participate in activities on and around the decks of the canoes. Crewmembers, teachers, and volunteers spend time with schools, communities, and organizations, sharing the mission and objectives of Mālama Honua Worldwide Voyage, the history of PVS, and the objectives, resources, and opportunities to mālama honua.

5. Describe the geographic coverage.

The WWV will cover 47,000 nautical miles, 85 ports, and 26 countries. PVS is headquartered on O'ahu. Due to the geographic scope, the Voyage integrates its mission and objectives through multiple dimensions - from news media reporting to print news/magazine features to website and social media, and through in-class content to presentations throughout Hawai'i. During the grant period, the canoe will be voyaging from Australia to South Africa to South America and arriving in North America, and Hikianalia will be in Hawaii creating greater opportunities for training, learning, and engaging.

Through multi-media and virtual information sharing, the geographically served region is worldwide, bringing attention to the mission of the voyage and cultural history and values of Hawaii. The effort brings communities closer to experience and practice Hawaiian culture, understanding the history of Voyaging in the Pacific, and connecting the metaphor of the canoe that represents our Island Earth.

The WWV anticipates the support a diversity of navigators, students, educators, cultural leaders, global

leaders, scientists, documenters, medics, and traditional voyagers. The WWV commenced in June 2013 starting with the Mālama Hawai'i Leg. Navigating around the Hawaiian Islands, the Mālama Hawai'i Leg not only looked to Hawai'i's communities for support, but provided educational and cultural engagements allowed 628 crew, volunteers, and community members the opportunity to train and prepare on the wa'a, and practice port activities. Additionally, 92 teachers sailed with Hōkūle'a and/or Hikianalia, receiving first-hand experiences that engaged, inspired, and enhanced existing and future collaborative opportunities. The Mālama Hawai'i Leg extended until March 2014 and in total, the wa'a - canoes and its crews visited 33 communities and travelled 2,495 nautical miles.

II. Service Summary and Outcomes

The Service Summary shall include a detailed discussion of the applicant's approach to the request. The applicant shall clearly and concisely specify the results, outcomes, and measures of effectiveness from this request. The applicant shall:

1. Describe the scope of work, tasks and responsibilities;

We respectfully request funding from the State of Hawaii to assure the success of the Mālama Honua Worldwide Voyage (WWV) for FY2016. Funding would support our challenge to become a catalyst for positive change in Hawai'i by constantly learning from and nurturing relationships worldwide that share the values of, and responsibility for, caring for Island Earth, her oceans and children, while honoring our heritage and perpetuating our culture.

- A. Mindful of the urgency of the environmental and social challenges facing our island home, PVS seeks to build relationships with, and learn from people and places in Hawai'i and around the world already doing extraordinary work to help the Earth.
 - Task: Document from the WWV view point and spotlight and stories of hope that empower positive action towards a more sustainable future.
 - Responsibility: Ensure that the professional execution of a meaningful WWV includes the successful dissemination that focuses on the primary themes: Cultural sharing, leadership, ocean & environmental awareness, voyaging skills, and education.
- B. Support the success of the WWV and building the capacity of PVS beyond by documenting the Voyage on the canoes and in-port, thereby creating shared outreach and educational opportunities at home with other schools, organizations, and community projects.
 - Task: Collect, interpret and disseminate curricula, lesson plans, and learning opportunities related to Voyaging and STEM skill sets. Document experience to inspire action.
 - Responsibility: Communicate the mission of the Voyage and provide the necessary resources to move partner educators in Hawaii and globally to develop opportunities for learning around the themes of the WWV and mālama honua.
- C. Work to ensure that communities today and tomorrow honor and sustain the health and well-being of our islands, oceans, culture, and people.
 - Task: The approximately four (4)-year voyage uses two (2) double-hulled, long-distance voyaging canoes as floating classrooms. Both rely on ancestral knowledge of star patterns,

ocean movement, marine life, and weather indications to guide them. Hōkūle‘a represents Hawaii’s culture and connection to its ancestors. The sister vessel, Hikianalia, is powered by solar energy and sails. She is a high-tech, eco-friendly, and a platform for modern technology - learning, scientific inquiry and reporting. Both canoes provide real opportunities to create virtual and in-person experiences to learners of all ages.

- Responsibility: The Educational program opportunities host a variety of interactive opportunities to engage students and communities. From a youth and educator network to video calls to in-person presentations, to blogs and vlogs, we continue to grow the reach, quality of interaction, and engagement with Hawaii’s youth and community members.

2. Provide a projected annual timeline for accomplishing the results or outcomes of the service;

The Worldwide Voyage commenced in May 2013, and today, prepares to depart the Pacific Ocean to continue navigating through the Ocean with an anticipated completion in mid- to late-2017. Commencing in 2013, each year of the WWV represents a different theme of the Voyage:

- COMPLETE: 2013 Leg: Hawai‘i - IN HOME WATERS: The Mālama Hawai‘i Leg visited 33 communities and travelled 2,495 nautical miles. On land, PVS hosted over 175 schools and organizations with canoe tours and in-port education activities, completed 20 service projects and led 35 school and community presentations. We estimate that 23,335 students and community members participated in Mālama Hawai‘i Leg of the Worldwide Voyage.
- IN-PROGRESS: 2014 Leg: Hawai‘i to New Zealand - PAYING HOMAGE: Promoting the continued cultural exchange between new generations of Pacific Islanders, the Pacific Ocean voyage furthers the educational objectives of the voyage and honors the voyaging and cultural ties throughout Polynesia and the Pacific.
- 2015 Leg: Australia, Indonesia, Madagascar, South Africa - GLOBAL COLLABORATION: The voyage shall highlight the need for global collaboration and sharing and unifying conservation efforts.
In late April 2015, Hōkūle‘a will leave the Pacific Ocean for the first time in history and voyage from Aotearoa (New Zealand) to Australia. In early May 2015, Hōkūle‘a and her crew will make landfall in Sydney and will sail along the coast to significant environmental and cultural sites until reaching her final destination of Darwin in August 2015.

Through the month of September 2015, the WWV will cross the Indian Ocean. With a focus on exploration and Voyaging skill sets, the crew members will end the year in South Africa, where crew will connect with partners to continue to work towards the proposed scope.

- 2016 Leg: South Africa, Nambia, Brasil, US - Southeast - ACROSS THE ATLANTIC: The diversity of people at these ports of call provides an ideal platform to enhance the impact of the WWV and its mission and objectives.
- 2017 Leg: US-Northeast, Panama, Costa Rica, Rapa Nui, French Polynesia to Hawai‘i - HOMEWARD BOUND: PVS’s efforts towards realizing a hopeful and healthy future for the ocean and the earth will have already begun to manifest, and continue through collective experiences with future generations.

Once home - we will continue the voyaging tradition, applying the lessons learned, building on the

relationships and experiences found throughout island earth to further enhance and support mālama honua with our collaborators, partners, and 'ohana to support the next generation of learners on their voyage.

3. Describe its quality assurance and evaluation plans for the request. Specify how the applicant plans to monitor, evaluate, and improve their results; and

Over the past 42 years, PVS has successfully managed its organization, managing and monitoring various Federal, State, and Private grants. Over the last few years, PVS has increased its administrative capacity that provides greater confidence among our partners and funders that we will successfully manage our resources and safely conduct the WWV. Consistently generating clean audits, external auditors have approved PVS's ability to document volunteer times and activities, outreach, impact evaluation, and outputs. As we progress through the WWV, we continue to look to improve using best practices.

The outputs and outcomes include measurable counts of participation with educational institutions, organizations, and the general public that are inspired to share the voyage and its objectives among their communities. In total, the voyage will be intertwined into the community in a way that engages a diverse audience in creating opportunities reflected in the WWV themes. Output measurements typically quantify school visits, presentations, volunteers that support voyaging, training opportunities, and program opportunities.

During the WWV, PVS record keeping includes documenting and tracking the schools and organizations that crew members visit, and schools, organizations, and community member counts that visit the canoes. This includes documenting the location, school name, visitor counts and date. This is also the same when it comes to community (schools and organizations) presentations and engagements, tracking organization information, audience counts, and content shared.

Through a multi-dimensional communications approach, the Hokulea.com website and social media provides direct access to the voyage in the form of viewing posted videos, photographs, and crew blogs. It provides a way for individuals and families to engage at a virtual level - with up-to-date photos and imagery from the wa'a, allowing viewers a firsthand glimpse into the Voyaging experience. The Mālama Honua Worldwide Voyage uses Facebook, Instagram, Google+, and Twitter. Video content is also posted on YouTube channels, Vimeo, and Oiwi TV online. National Geographic Explorer has dedicated a blog page for updates and both Hawai'i's KHON2 TV and the Honolulu Star-Advertiser have placed banners on their homepages that link viewers to updated reports on the Voyage. Website analytics also allow us to track audience counts, behaviors, interest, and geographic data over a period of time.

4. List the measure(s) of effectiveness that will be reported to the State agency through which grant funds are appropriated (the expending agency). The measure(s) will provide a standard and objective way for the State to assess the program's achievement or accomplishment. Please note that if the level of appropriation differs from the amount included in this application that the measure(s) of effectiveness will need to be updated and transmitted to the expending agency.

Measures of Effectiveness
Conduct the four-year worldwide voyage using traditional navigation methods <ul style="list-style-type: none">▪ Apprentice navigators trained

<ul style="list-style-type: none"> ▪ Crew members trained ▪ Canoes are properly maintained, repaired, and cared for ▪ Host crew training course ▪ In-port activities to demonstrate Voyaging skills
<p>Provide teaching resources</p> <ul style="list-style-type: none"> ▪ Community presentation count ▪ In-port activity participation ▪ Multi-media availability ▪ Host a "track the voyage" map that brings world geography into real-time tracking ▪ Education Network growth ▪ Learning Center resources shared
<p>Engage Communities in Hawaii and globally</p> <ul style="list-style-type: none"> ▪ Total number of participants, in Hawaii, US, and globally ▪ In-port activity participation ▪ Youth participation numbers ▪ "Adopt the Voyage" and Crew members "Adopt a School", count and participation
<p>Connect with organizations around the world to share, document, and disseminate knowledge for educational purposes</p> <ul style="list-style-type: none"> ▪ Maintain social media and the WWV website ▪ Post and update counts ▪ Production of multi-media content for dissemination ▪ Website Sessions and/or users

III. Financial

Budget

1. The applicant shall submit a budget utilizing the enclosed budget forms as applicable, to detail the cost of the request.

Please see attached budget forms.

2. The applicant shall provide its anticipated quarterly funding requests for the fiscal year 2016.

Quarter 1	Quarter 2	Quarter 3	Quarter 4	Total Grant
\$125,000	\$125,000	\$125,000	\$125,000	\$500,000

3. The applicant shall provide a listing of all other sources of funding that they are seeking for fiscal year 2016.

FUNDING SOURCE - FY 2016	AMOUNT	CONFIRMED/ PENDING?	AWARD PERIOD	NOTES
US-DHS: Administration for Native Americans	\$1,200,000	Pending	2015-2018	To be submitted

		Office of Hawaiian Affairs	\$500,000	Pending	2015-2016	Submitted for Review
		Private Foundation	\$100,000	Confirmed	2014-2016	Signed Pledge
		Business / Private Contribution	\$16,500	Confirmed	2013-2015	Signed Pledge
		Business / Private Contribution	\$10,000	Confirmed	2013-2017	Signed Pledge
		Business / Private Contribution	\$5,000	Confirmed	2013-2017	Signed Pledge
		Business / Private Contribution	\$50,000	Confirmed	2013-2017	Signed Pledge
		Business / Private Contribution	\$5,000	Confirmed	2014-2017	Signed Pledge
		Private Foundation	\$10,000	Confirmed	2013-2017	Signed Pledge
		Business / Private Contribution	\$10,000	Confirmed	2013-2017	Signed Pledge
		Private Foundation	\$100,000	Confirmed	2013-2017	Signed Pledge
		Business / Private Contribution	\$400,000	Confirmed	2014-2017	Signed Pledge
		Business / Private Contribution	\$50,000	Confirmed	2014-2018	Signed Pledge
		Business / Private Contribution	\$37,500	Confirmed	2013-2015	Signed Pledge
		Private Foundation	\$100,000	Confirmed	2014-2017	Signed Pledge
		Business / Private Contribution	\$25,000	Confirmed	2013-2016	Signed Pledge
		Business / Private Contribution	\$25,000	Confirmed	2014-2018	Signed Pledge
		Private Foundation	\$125,000	Confirmed	2014-2017	Signed Pledge
		Private Foundation	\$10,000	Confirmed	2014-2018	Signed Pledge
		TOTAL INCOME:	\$1,025,000			

FUNDING SOURCE - FY 2017		AMOUNT	CONFIRMED/ PENDING?	AWARD PERIOD	NOTES
	Private Foundation	\$50,000	Confirmed	2014-2016	Signed Pledge
	Business / Private Contribution	\$10,000	Confirmed	2013-2017	Signed Pledge
	Business / Private Contribution	\$5,000	Confirmed	2013-2017	Signed Pledge
	Business / Private Contribution	\$50,000	Confirmed	2013-2017	Signed Pledge
	Business / Private Contribution	\$5,000	Confirmed	2014-2017	Signed Pledge
	Private Foundation	\$10,000	Confirmed	2013-2017	Signed Pledge
	Business / Private Contribution	\$10,000	Confirmed	2013-2017	Signed Pledge
	Private Foundation	\$100,000	Confirmed	2013-2017	Signed Pledge
	Business / Private Contribution	\$400,000	Confirmed	2014-2017	Signed Pledge
	Business / Private Contribution	\$50,000	Confirmed	2014-2018	Signed Pledge
	Private Foundation	\$100,000	Confirmed	2014-2017	Signed Pledge
	Business / Private Contribution	\$12,500	Confirmed	2013-2016	Signed Pledge
	Business / Private Contribution	\$25,000	Confirmed	2014-2018	Signed Pledge
	Private Foundation	\$125,000	Confirmed	2014-2017	Signed Pledge
	Private Foundation	\$10,000	Confirmed	2014-2018	Signed Pledge
TOTAL INCOME:		\$962,500			

4. **The applicant shall provide a listing of all state and federal tax credits it has been granted within the prior three years. Additionally, the applicant shall provide a listing of all state and federal tax credits they have applied for or anticipate applying for pertaining to any capital project, if applicable.**

None.

5. **The applicant shall provide a listing of all government contracts and grants it has been and will be receiving for program funding.**

- FY 2016 State of Hawai'i Grant-in-Aid - Pending receipt
- Hawai'i Tourism Authority - Complete prior to start of FY16.
- State of Hawai'i, Office of Hawaiian Affairs - Complete prior to start of FY16.

6. **The applicant shall provide the balance of its unrestricted current assets as of December 31, 2014.**

PVS's current unrestricted balance as of November 31, 2014 is \$259,424. Once we close December 2014, we will be able to provide this number.

IV. Experience and Capability

A. Necessary Skills and Experience

The applicant shall demonstrate that it has the necessary skills, abilities, knowledge of, and experience relating to the request. State your experience and appropriateness for providing the service proposed in this application. The applicant shall also provide a listing of verifiable experience of related projects or contracts for the most recent three years that are pertinent to the request.

PVS was founded in 1973, and has a history of successful accomplishments. Within this time, PVS has taught more than 500,000 people in education, training, research, and voyaging programs. Extraordinary mentors and teachers shaped leadership, the organization, and its goals. We seek to honor them, our supporters commitments from the past, present, and future, and share the Voyage and its lessons in multiple forms of engagement.

Over the last seven months alone, 136 crewmembers sailed portions of the 7,000 nautical miles through the Pacific, visited 24 islands and six (6) countries. Since leaving Hawai'i, crew members have connected with nearly 12,000 students and community members through port activities, community sails, educational presentations, learning journeys, and community engagements. The crew continues to interact with students near and far, connecting through port activities and virtual communication.

Leg 1 - The Mālama Hawai'i leg provided students and families with experiential educational opportunities,

connecting communities with the cultural traditions and practices on and around the decks of the canoes - physically and virtually, while allowing for the necessary crew training prior to departing the Islands. This Leg visited 33 communities throughout Hawai'i and travelled 2,495 nautical miles. On land, PVS hosted over 175 schools and organizations with canoe tours and in-port education activities, completed 20 service projects and led 35 school and community presentations. We estimate that 23,335 students and community members participated in Mālama Hawai'i Leg of the Worldwide Voyage.

The WWV Learning Center offers multiple activities to engage individuals, families, and communities whether on-board or at home. These activities may include:

- **Learning Journeys:** Spotlighting stories of hope within port communities that feature individuals and groups who are taking action to mālama honua - *care for earth*.
- **Share Your Story:** A virtual opportunity for students and communities worldwide to share their stories about how they mālama honua - *care for their earth*.
- **Track the Voyage Webpage:** Throughout 2014, this is the most visited webpage on Hokulea.com. Bringing geography alive, learners track the sail path and ports of call.
- **Video-Chats between schools and crew:** A first for PVS, the collaborations connect the Voyage to educators allow for a more engaging experience to connect the crew with schools and students on land.
- **Crew and Voyage Blogs:** These blogs share the perspectives and culture of the crew, bringing audiences closer to the Voyaging experience.
- **Education Network:** Through Hokulea.com, educational resources continue to be populated over time, providing links to lessons and units that teachers and organizations create and share.
- **Educational Presentations:** With the intent to share resources and inspire audiences to develop and initiate projects inspired by the Voyage and actions to mālama honua, educational presentations are available to schools, organizations, and businesses.

Over the last three years, PVS has accomplished the following:

2012: Sister canoe, Hikianalia launched from Auckland, New Zealand and voyages from Aotearoa to Tahiti to Hawai'i

2012: His Holiness the Dalai Lama conducts a blessing for the Mālama Honua Worldwide Voyage and Arch Bishop Tutu sails on Hōkūle'a

2013: The Mālama Honua Worldwide Voyage is launched from Hilo, Hawai'i.

2013: Fund Development Campaign demonstrates that Hawai'i is behind the Voyage (Establishing Title sponsor Hawaiian Airlines and Education Sponsor Kamehameha Schools)

2014: Mālama Honua Public Charter School opens in Waimānalo

2014: *Promise to Children* Agreement is created and signed; *Promise to Pae'aina* is created and signed; *French Polynesia Declaration to Mālama Honua* is given to PVS

2014: UN Secretary General Ban Ki-moon gives support for Hōkūle'a and its message.

B. Facilities

The applicant shall provide a description of its facilities and demonstrate its adequacy in relation to the request. If facilities are not presently available, describe plans to secure facilities.

This application does not request facilities funding. Nonetheless, PVS is currently housed in the University of Hawaii's Honolulu Community College - Marine Education and Training Center (METC). PVS rents two

rooms within METC for administrative and classroom training purposes. METC is officially recognized as ADA compliant, as required by all State buildings.

PVS Satellite Office: Located in the American Savings Bank Office Building, Liliha Shopping Center.

*The facility includes office space and shared meeting space, an operating elevator.

V. Personnel: Project Organization and Staffing

A. Proposed Staffing, Staff Qualifications, Supervision and Training

The applicant shall describe the proposed staffing pattern and proposed service capacity appropriate for the viability of the request. The applicant shall provide the qualifications and experience of personnel for the request and shall describe its ability to supervise, train and provide administrative direction relative to the request.

The following personnel directly support the implementation and success of the WWV:

1. **Communication Officer:** Supports integrated communication strategies and programs for the Worldwide Voyage. Role: Oversee all multi-media to ensure strategy and near- and short-term objects are being met. Support program operations with web and print production design, review, dissemination. Oversee contract consultants.
2. **Media Consultants:** Support PVS and WWV in providing Communications & public relations consultation. Support in the communication and coordination of the multi-year, WWV.
3. **Multi-Media Consultant:** Supports the documentation, filming, and writing of the WWV. Edits, produces, and makes available all multi-media for voyage.
4. **PVS Learning Center Director:** Strategize, execute, and manage all Leadership training (youth, educator, and crew). Oversee virtual collaborations and communication plans throughout voyage connecting canoe-to-classroom.
5. **Logistics Director:** Support in the planning, documentation, and logistics coordination related to all travel to and from port locations. This includes logistics for crew while on the wa'a, travel and accommodation while in port, and coordinates cultural protocol teams.

B. Organization Chart

The applicant shall illustrate the position of each staff and line of responsibility/supervision. If the request is part of a large, multi-purpose organization, include an organization chart that illustrates the placement of this request.

Please see attached PVS Organization Chart.

C. Compensation

The applicant shall provide the annual salaries paid by the applicant to the three highest paid officers, directors, or employees of the organization by position.

President: \$108,160
Chief Executive Officer: \$104,000
Voyaging Director: \$97,344

VI. Other

A. Litigation

The applicant shall disclose any pending litigation to which they are a party, including the disclosure of any outstanding judgement. If applicable, please explain.

No pending litigation or judgments.

B. Licensure or Accreditation

The applicant shall specify any special qualifications, including but not limited to licensure or accreditation that the applicant possesses relevant to this request.

No special qualifications, licensures or accreditations.

C. Federal and County Grants

The applicant shall separately specify the amount of federal and county grants awarded since July 1, 2014.

None.

D. Private Educational Institutions

The applicant shall specify whether the grant will be used to support or benefit a sectarian or non-sectarian private educational institution. Please see Article X, Section 1, of the State Constitution for the relevance of this question.

Not applicable.

E. Future Sustainability Plan

The applicant shall provide a plan for sustaining after fiscal year 2015-16 the activity funded by the grant if the grant of this application is:

- (1) Received by the applicant for fiscal year 2015-16, but**
- (2) Not received by the applicant thereafter.**

The Polynesian Voyaging Society continues to develop creative strategies to increase revenue and streamline expenses. Revenues shall be generated through private donations from individuals, business and family foundations, and businesses. PVS relies on its existing and future relationships to leverage in-kind support and discounts.

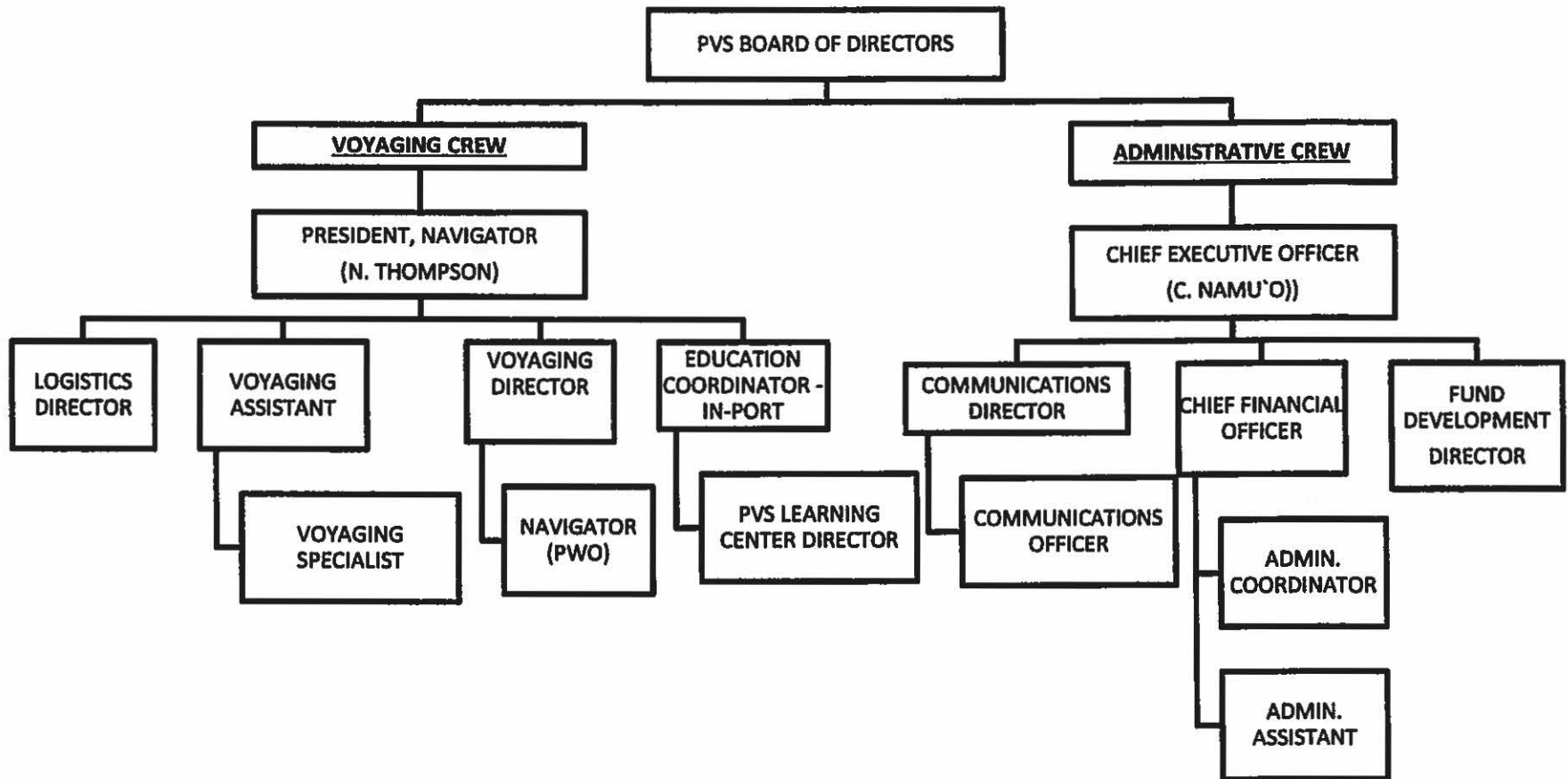
We continue to solicit private support, grow in-kind donations, and increase fundraising opportunities through program fees, membership, and events.

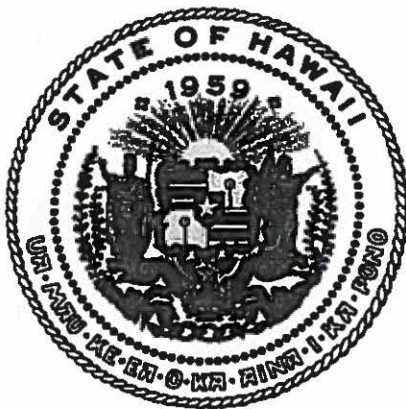
In addition, we continue to work on establishing an endowment and process and procedure to accept legacy gifts.

F. Certificate of Good Standing (If the Applicant is an Organization)

If the applicant is an organization, the applicant shall submit one (1) copy of a certificate of good standing from the Director of Commerce and Consumer Affairs that is dated no earlier than December 1, 2014.

Please see attached State of Hawai'i – DCCA: Certificate of Good Standing.





Department of Commerce and Consumer Affairs

CERTIFICATE OF GOOD STANDING

I, the undersigned Director of Commerce and Consumer Affairs of the State of Hawaii, do hereby certify that

POLYNESIAN VOYAGING SOCIETY

was incorporated under the laws of Hawaii on 09/13/1973 ; that it is an existing nonprofit corporation; and that, as far as the records of this Department reveal, has complied with all of the provisions of the Hawaii Nonprofit Corporations Act, regulating domestic nonprofit corporations.



IN WITNESS WHEREOF, I have hereunto set my hand and affixed the seal of the Department of Commerce and Consumer Affairs, at Honolulu, Hawaii.

Dated: December 17, 2014

Director of Commerce and Consumer Affairs

BUDGET REQUEST BY SOURCE OF FUNDS

Period: July 1, 2015 to June 30, 2016

Applicant: Polynesian Voyaging Society

BUDGET CATEGORIES	Total State Funds Requested (a)	(b)	(c)	(d)
A. PERSONNEL COST				
1. Salaries	161,344	772,836		
2. Payroll Taxes & Assessments				
3. Fringe Benefits	48,403	196,762		
TOTAL PERSONNEL COST	209,747	969,598		
B. OTHER CURRENT EXPENSES				
1. Airfare, Inter-Island				
2. Insurance				
3. Lease/Rental of Equipment				
4. Lease/Rental of Space				
5. Staff Training				
6. Supplies	90,253	22,747		
7. Telecommunication	15,000	2,000		
8. Utilities				
9 Media Communication	140,000	442,743		
10 Canoe education materials & supplies	15,000	21,097		
11 Small Equipment	10,000	60,000		
12 Travel - Crew Food	20,000	32,592		
13				
14				
15				
16				
17				
18				
19				
20				
TOTAL OTHER CURRENT EXPENSES	290,253	581,179		
C. EQUIPMENT PURCHASES				
D. MOTOR VEHICLE PURCHASES				
E. CAPITAL				
TOTAL (A+B+C+D+E)	500,000	1,550,777		
SOURCES OF FUNDING		Budget Prepared By:		
(a) Total State Funds Requested	500,000	Tricia Dang, Fund Development Director 542-9251		
(b) Total Private & Govt	1,550,777	Name (Please type or print) Phone		
		[Redacted Signature] 1/31/15		
		Signature of Authorized Official Date		
TOTAL BUDGET	2,050,777	Chyda W. Namuo, Chief Executive Officer		
		Name and Title (Please type or print)		

BUDGET JUSTIFICATION - EQUIPMENT AND MOTOR VEHICLES

Period: July 1, 2015 to June 30, 2016

Applicant: Polynesian Voyaging Society

DESCRIPTION EQUIPMENT	NO. OF ITEMS	COST PER ITEM	TOTAL COST	TOTAL BUDGETED
			\$ -	
			\$ -	
			\$ -	
			\$ -	
			\$ -	
TOTAL:				

JUSTIFICATION/COMMENTS:

DESCRIPTION OF MOTOR VEHICLE	NO. OF VEHICLES	COST PER VEHICLE	TOTAL COST	TOTAL BUDGETED
			\$ -	
			\$ -	
			\$ -	
			\$ -	
			\$ -	
TOTAL:				

JUSTIFICATION/COMMENTS:

BUDGET JUSTIFICATION - CAPITAL PROJECT DETAILS

Period: July 1, 2015 to June 30, 2016

Applicant: Polynesian Voyaging Society

FUNDING AMOUNT REQUESTED						
TOTAL PROJECT COST	ALL SOURCES OF FUNDS RECEIVED IN PRIOR YEARS		STATE FUNDS REQUESTED	OF FUNDS REQUESTED	FUNDING REQUIRED IN SUCCEEDING YEARS	
	FY: 2013-2014	FY: 2014-2015	FY:2015-2016	FY:2015-2016	FY:2016-2017	FY:2017-2018
PLANS						
LAND ACQUISITION						
DESIGN						
CONSTRUCTION						
EQUIPMENT						
TOTAL:						
JUSTIFICATION/COMMENTS: NOT APPLICABLE						

GOVERNMENT CONTRACTS AND/OR GRANTS

Applicant: Polynesian Voyaging Society

	CONTRACT DESCRIPTION	EFFECTIVE DATES	AGENCY	GOVERNMENT ENTITY (U.S. / State / Haw / Hon / Kau / Mau)	CONTRACT VALUE
1.	Hokulea Ambassador Project, CON 1447	6/18/2014 – 6/1/2015	Hawaii Tourism Authority	State	\$125,000 (\$35,000 remaining)
2.	Support for the Worldwide Voyage, Grant Agreement #2940	11/1/2013 to 12/31/2014	Office of Hawaiian Affairs	State	\$300,000 (\$50,000 remaining)
3.	Collection and Dissemination of data from the PVS Worldwide Voyage, Contract no. 13-001	9/15/2012 to 1/31/2015	Pacific Resources for Education and Learning (PREL), through the National Science Foundation Grant	US, and private	\$66,236 (\$13,961 remaining)
4.					
5.					
6.					
7.					
8.					
9.					
10.					

**DECLARATION STATEMENT OF
APPLICANTS FOR GRANTS PURSUANT TO
CHAPTER 42F, HAWAII REVISIED STATUTES**

The undersigned authorized representative of the applicant certifies the following:

- 1) The applicant meets and will comply with all of the following standards for the award of grants pursuant to Section 42F-103, Hawaii Revised Statutes:
 - a) Is licensed or accredited, in accordance with federal, state, or county statutes, rules, or ordinances, to conduct the activities or provide the services for which a grant is awarded;
 - b) Complies with all applicable federal and state laws prohibiting discrimination against any person on the basis of race, color, national origin, religion, creed, sex, age, sexual orientation, or disability;
 - c) Agrees not to use state funds for entertainment or lobbying activities; and
 - d) Allows the state agency to which funds for the grant were appropriated for expenditure, legislative committees and their staff, and the auditor full access to their records, reports, files, and other related documents and information for purposes of monitoring, measuring the effectiveness, and ensuring the proper expenditure of the grant.
- 2) If the applicant is an organization, the applicant meets the following requirements pursuant to Section 42F-103, Hawaii Revised Statutes:
 - a) Is incorporated under the laws of the State; and
 - b) Has bylaws or policies that describe the manner in which the activities or services for which a grant is awarded shall be conducted or provided.
- 3) If the applicant is a non-profit organization, it meets the following requirements pursuant to Section 42F-103, Hawaii Revised Statutes:
 - a) Is determined and designated to be a non-profit organization by the Internal Revenue Service; and
 - b) Has a governing board whose members have no material conflict of interest and serve without compensation.

Pursuant to Section 42F-103, Hawaii Revised Statutes, for grants used for the acquisition of land, when the organization discontinues the activities or services on the land acquired for which the grant was awarded and disposes of the land in fee simple or by lease, the organization shall negotiate with the expending agency for a lump sum or installment repayment to the State of the amount of the grant used for the acquisition of the land.

Further, the undersigned authorized representative certifies that this statement is true and correct to the best of the applicant's knowledge.

Polynesian Voyaging Society
(Typed Name of Individual or Organization)



(Signature)

January 29, 2015

(Date)

Clyde W. Namuo, Chief Executive Officer
(Typed Name) (Title)