

House District 10

Senate District 5

**THE TWENTY-SEVENTH LEGISLATURE  
APPLICATION FOR GRANTS AND SUBSIDIES  
CHAPTER 42F, HAWAII REVISED STATUTES**

Log No:

For Legislature's Use Only

Type of Grant or Subsidy Request:

GRANT REQUEST - OPERATING

GRANT REQUEST - CAPITAL

SUBSIDY REQUEST

"Grant" means an award of state funds by the legislature, by an appropriation to a specified recipient, to support the activities of the recipient and permit the community to benefit from those activities.

"Subsidy" means an award of state funds by the legislature, by an appropriation to a recipient specified in the appropriation, to reduce the costs incurred by the organization or individual in providing a service available to some or all members of the public.

"Recipient" means any organization or person receiving a grant or subsidy.

STATE DEPARTMENT OR AGENCY RELATED TO THIS REQUEST (LEAVE BLANK IF UNKNOWN):

STATE PROGRAM LD. NO. (LEAVE BLANK IF UNKNOWN):

**1. APPLICANT INFORMATION:**

Legal Name of Requesting Organization or Individual:  
Maui Preparatory Academy

Dbas: Maui Preparatory Academy

Street Address:  
4910 Honoapiilani Hwy., Napili, Hawai'i

Mailing Address:  
PMB #186 5095 Napilihau St. #109B  
Lahaina, Maui, Hawaii 96761

**2. CONTACT PERSON FOR MATTERS INVOLVING THIS APPLICATION:**

Name JONATHAN L. SILVER PHD

Title Head of School

Phone # (808)-665-9966

Fax # (808)-665-1075

e-mail jsilver@mauiprep.org

**3. TYPE OF BUSINESS ENTITY:**

- NON PROFIT CORPORATION
- FOR PROFIT CORPORATION
- LIMITED LIABILITY COMPANY
- SOLE PROPRIETORSHIP/INDIVIDUAL

**6. DESCRIPTIVE TITLE OF APPLICANT'S REQUEST:**

**HONOAPIILANI HIGHWAY AND NAPILIHOU STREET INTERSECTION IMPROVEMENT PROJECT**

4. FEDERAL TAX ID #: [REDACTED]

5. STATE TAX ID #: [REDACTED]

**7. AMOUNT OF STATE FUNDS REQUESTED:**

FISCAL YEAR 2015: \$ \$384,450.00

**8. STATUS OF SERVICE DESCRIBED IN THIS REQUEST:**

- NEW SERVICE (PRESENTLY DOES NOT EXIST)
- EXISTING SERVICE (PRESENTLY IN OPERATION)

SPECIFY THE AMOUNT BY SOURCES OF FUNDS AVAILABLE AT THE TIME OF THIS REQUEST:

STATE \$ 0

FEDERAL \$ 0

COUNTY \$ 0

PRIVATE/OTHER \$ 0

TYPE NAME & TITLE OF AUTHORIZED REPRESENTATIVE:

[REDACTED]

JONATHAN L. SILVER PHD HEAD OF SCHOOL  
NAME & TITLE

1/12/15  
DATE SIGNED



**RECEIVED**  
1/20/2015

## Application for Grants

### I. Background and Summary

1. A brief description of the applicant's background:  
Maui Preparatory Academy (Maui Prep) is a small independent school serving the community of West Maui. Maui Prep is accessed via the mauka or east leg of Napilihau Street at its intersection with the Honoapiilani Highway. Napilihau Street is a two lane, two-way, County of Maui roadway with a posted speed limit of 20 miles per hour (mph). Honoapiilani Highway is a two-lane, two-way undivided State Highway with a posted speed limit of 45 mph. Honoapiilani Highway serves as the primary arterial roadway for all West Maui.

On January 19<sup>th</sup>, 2005, the County of Maui, Planning Commission approved an ordinance to change the zoning from agricultural district to P-1 Public/Quasi-public District (conditional zoning) to allow the construction of new elementary/middle and upper school buildings, associated playing fields, entrance and exit areas. The conditional zoning was conditioned upon the implementation of traffic mitigation measures consisting of the construction of certain intersection improvements, which were identified in the County and Department of Transportation approved Traffic Impact Assessment Report (TAIR). The conditional zoning contained implementation milestones, based on school enrollment agreed to by Maui Preparatory Academy and the Department of Transportation.

In order to achieve improved traffic operations at this location, the approved TIAR recommended that: (1) an acceleration lane be provided on Honoapiilani Highway for the eastbound right-turn movement; (2) modification of traffic signal timing at both the Honoapiilani Highway/Napilihau Street and Honoapiilani Highway/Akahahele Street intersections to increase capacity and; (3) a right-turn deceleration lane be provided on the northbound approach of Honoapiilani Highway and the intersection with Napilihau Street to maintain through traffic flow on the highway.

The road network that surrounds Maui Prep is already at capacity, rated at a Level of Service LOS "D." If left unmitigated, the schools projected growth would negatively affect the ability of students to access the campus safely.

This GIA proposal requests funding support from the State Grant in Aid program to provide intersection improvements along a major transportation artery serving West Maui that is already plagued with inadequate infrastructure. Funding support will improve traffic flow to the immediate region not only to accommodate the traffic demands as a result of enrollment growth at Maui preparatory Academy but also to accommodate the increase in overall growth of the area and nearby communities.



2. The goals and objectives related to the request:  
Based on the projected growth of student enrollment and traffic operational deficiencies resulting from overall growth in the region, Maui Preparatory Academy requests funding support from the Hawaii State Grant in Aid to improve inadequate traffic infrastructure at the Honoapiilani Highway and Napilihau Street Intersection.

Primary Goal: Improve inadequate infrastructure pursuant to County and Department of Transportation approved TIAR recommendations and construction documentation.

Objective 1: Provide an acceleration lane on Honoapiilani Highway for eastbound right turn from the Napilihau Street eastbound approach for merging into southbound traffic.

Objective 2: Modify the traffic signal timing at the intersection of Honoapiilani Highway and Napilihau Street to increase capacity of the intersection by providing additional green time to the northbound and southbound highway approaches.

Objective 3: Modify the traffic signal timing at the intersection of Honoapiilani Highway and Akahahele Street to increase capacity of the intersection.

Objective 4: Provide a right turn deceleration lane on the northbound approach of Honoapiilani Highway and the intersection with Napilihau Street to maintain through traffic flow on the highway

3. The public purpose and need to be served:  
This grant proposal, if accepted by the State of Hawaii, would provide \$384,450.00 for infrastructure improvements at Honoapiilani Highway and Napilihau Street intersection. Traffic analyses have shown that the existing intersection is currently operating over capacity.

The following describes traffic operations under the Build scenario and recommends measures to improve traffic flow and safety within the study area. It is important to point out that some of the improvements discussed below are needed independent of the projected growth in school enrollment. Graphics conceptually depicting the recommended roadway and intersection improvements, and associated cost estimates are provided in the appendix.

The traffic analysis used as the basis for the TIAR indicates that additional capacity is needed at the signalized intersection of Honoapiilani Highway and Napilihau Street in order to accommodate traffic volume demands during the weekday, morning and evening peak hours.

Assuming full occupancy of the school under the projected scenario, the eastbound, westbound, and northbound intersection approach is operating at LOS "D" with the existing geometrics.

In order to achieve improved traffic safety and capacity at this location, it is recommended that an acceleration lane be provided on Honoapiilani Highway for the eastbound right-turn movement from the Napilihau Street eastbound approach for the southbound traffic demands.

Additionally, modification of traffic signal timing at the intersection of Honoapiilani Highway and Napilihau Street to increase capacity of the intersection by providing additional green time to the northbound and southbound highway approaches. Modification of traffic signal timing at the intersection of Honoapiilani Highway and Akahele Street is also recommended to increase capacity of the intersection.

Finally, a right-turn deceleration lane is recommended on the northbound approach of Honoapiilani Highway and the intersection with Napilihau Street to maintain through traffic flow on the highway. A preliminary cost for the recommended intersection improvements is estimated to be \$384,450. Under this scenario the intersection is projected to operate at LOS B or better.

This project would satisfy the conditions of approval in the conditional zoning for the Intersection Improvements condition. This project is consistent with the West Maui long-range transportation plan and Maui County's Comprehensive Island Plan.

4. Describe the target population to be served; and Targeted:  
All Traffic
5. Describe the geographic coverage.  
West Maui Corridor. Honoapiilani Highway serves as the primary arterial roadway for all West Maui.

## II. Service Summary and Outcomes

1. Describe the scope of work, tasks and responsibilities;  
**Overview of Project Phases**  
Maui Preparatory Academy is applying for funding for the construction phase of the shovel ready Honoapiilani Highway and Napilihau Street Intersection Improvement Project. Ronald M Fukumoto Engineering, Inc. has completed the design and permitting phase prior to submitting this proposal for funding.

The following is a summary of the major project tasks. These will be reviewed with the selected consultant and defined to meet the needs of the project.



- Task 1 – Project Management
- Task 2 --Construction Phase Services

**Scope of Services**

The scope of work will include the deliverables necessary to complete the two key project tasks.

**Task 1 – Project Management**

**Task 1.1 MAUI PREP will arrange for a kick-off meeting with the ANNUAL CONSULTANT. This meeting will serve to clarify the lines of communication and other administrative details.**

**Task 1.2 MAUI PREP will provide a project schedule showing project meetings, project deliverables, and major milestones. The schedule shall be updated on a monthly basis.**

**Task 1.3 ANNUAL CONSULTANT will provide a monthly progress report. The monthly progress report shall be submitted to the Maui Prep administration.**

**Task 1.4 MAUI PREP will coordinate with the ANNUAL CONSULTANT to ensure work is completed timely and within the budget. Monthly statements of progress will be prepared summarizing the project status, fees invoiced, and remaining budget.**

**Task 1.5 ANNUAL CONSULTANT will consult with the State Department of Transportation (DOT) to make sure all plans are currently approved.**

**Task 1.6 ANNUAL CONSULTANT will coordinate with the DOT regarding any pertinent data needs associated with the execution of the project and will reasonably rely on the accuracy, timeliness and completion of the information.**

**Task 1.7 ANNUAL CONSULTANT shall attend preconstruction conference with the DOT.**

**Task 1.8 ANNUAL CONSULTANT will provide quality assurance and quality control (QA/QC) will be provided as part of this subtask. Deliverables will be reviewed by MAUI PREP to ensure quality and accuracy of the final deliverable.**

**Task 1.9 ANNUAL CONSULTANT and MAUI PREP administration will attend monthly project progress and coordination meetings to be held at Maui Preparatory Academy Administrative Offices for the duration of the project. The**

purpose of these meetings will be to report to the State of Hawaii on project status issues such as work in progress, work completed, and delivery schedule. Meeting minutes documenting decisions made and action items will be prepared by MAUI PREP administration and submitted to attending parties and the State of Hawaii.

DELIVERABLES: MONTHLY STATUS MEETINGS  
MONTHLY SCHEDULE UPDATES  
PROGRESS REPORTS AND MEETING MINUTES

**Task 2: Construction Phase Services**

**ANNUAL CONSULTANT** will complete the following tasks:

- Task 2.1 Relocation of signs, lighting, and wiring and pull boxes.
- Task 2.2 Removal of existing concrete gutter.
- Task 2.3 Remove existing asphalt and concrete pavement.
- Task 2.4 Remove existing chain link fence and post.
- Task 2.5 Replace 6' high chain link fence.
- Task 2.6 Relocate existing traffic signal box 5.0' from edge of concrete gutter.
- Task 2.7 Relocate existing highway lighting luminaire 3.5' from edge of concrete gutter.
- Task 2.8 Relocate existing MECO box 5.0" from edge of concrete gutter.
- Task 2.9 Install detectable warning mat.
- Task 2.10 Add pathway culvert.
- Task 2.11 Replace asphalt and concrete pavement.
- Task 2.12 Replace concrete gutter.
- Task 2.13 Provide smooth asphalt cement connection on Napilihau Street.
- Task 2.14 Remove existing stripping and signage.
- Task 2.15 Relocate existing signs and replace guideline, shoulder and crosswalk stripping.

DELIVERABLES: DOCUMENTATION OF THE CONSTRUCTION PROJECT  
CONSTRUCTION MEETINGS  
CONSTRUCTION OBSERVATIONS AND INSPECTION  
RECORD DRAWINGS

2. Provide a projected annual timeline for accomplishing the results or outcomes of the service;

**ANNUAL CONSULTANT** agrees to complete all work within One Hundred Twenty (120) calendar days of the date County issues a Notice to Proceed.



**ANNUAL CONSULTANT** will coordinate with the County regarding any pertinent data needs associated with the execution of the project and will reasonably rely on the accuracy, timeliness and completion of the information.

The following is a proposed schedule (assuming 5-day work-weeks) from Notice to Proceed:

• NTP from DOT	TBD
• Kick-off Meeting	NTP + 2 weeks
• DOT Preconstruction Meeting	NTP + 4 weeks
• Construction Begins	NTP + 7 weeks
• Construction Complete	NTP + 17 weeks

3. Describe quality assurance and evaluation plans for the request. Maui Prep is proposing a monthly monitoring program, which will detail the progress of the Honoapiilani Highway and Napilihau Intersection Improvement Project. These reports will be developed for the State of Hawaii with a copy submitted to the DOT.

Monthly reports will include the following deliverables:

Monthly meeting Attendance Records  
 Monthly Schedule Updates  
 Progress Reports and Meeting Minutes  
 Documentation of the Construction Project  
 Construction Meeting Attendance Records and Minutes  
 Construction Observation and Inspection Reports  
 Record Drawings

4. List the measure(s) of effectiveness:  
 The following improved conditions will reflect the effectiveness of the project measures and physical improvements implemented by Maui Prep.
- The level of service at the Honoapiilani Highway and Napilihau Street Intersection has improved from D to B from 2016 to 2017.
  - Improvements in average delay time at the Honoapiilani Highway and Napilihau Street Intersection has been reduced compared to existing conditions.
  - The level of service at the Honoapiilani Highway and Akahahele Street Intersection has improved from C to B during the peak hours from 2016 to 2017.
  - Level of service at the Honoapiilani Highway and Napilihau Street Intersection has increased for students and families accessing the Maui Prep campus despite a --% increase in student enrollment.
  - Level of service at the Honoapiilani Highway and Napilihau Street Intersection has increased for pedestrians and bicyclists despite a 25% increase in student enrollment.

- Community satisfaction with the project and reaction to infrastructure elements.

### III. Financial

#### Budget

1. The applicant shall submit a budget utilizing the enclosed budget forms as applicable, to detail the cost of the request.  
Please see attached
2. The applicant shall provide its anticipated quarterly funding requests for the fiscal year 2016.

Quarter 1	Quarter 2	Quarter 3	Quarter 4	Total Grant
\$96,112	\$96,112	\$96,112	\$96,112	\$96,112

3. The applicant shall provide a listing of all other sources of funding that they are seeking for fiscal year 2016.

Maui Prep will seek funding through the Safe Routes to School Program a federal aid program of the U.S. Department of Transportation Federal Highway Administration (FHWA). This program provides funds to substantially improve the ability of primary and middle schools students to walk and bicycle to school safely.

Additionally Maui Prep will seek funding through the County of Maui Community Development Block Grant to support intersection improvement efforts.

Maui Prep is actively seeking funding from local and national foundation to support and sustain our programmatic efforts. Maui Prep will apply to the following foundations in 2016:

- Central Pacific Bank Foundation
- Fred Baldwin Memorial Foundation
- G.N. Wilcox Trust
- Hawaii Community Foundation
- Atherton Foundation
- Cooke Foundation
- Bendon Family Foundation
- McNerny Foundation
- Cades Foundation
- Hawaii State Foundation on Culture and the Arts

4. The applicant shall provide a listing of all state and federal tax credits it has been granted within the prior three years. Additionally, the applicant shall provide a listing of all state and federal tax credits they have applied for or anticipate applying for pertaining to any capital project, if applicable.

*"Not applicable"*



5. The applicant shall provide a listing of all government contracts and grants it has been and will be receiving for program funding.

*"Not applicable"*

5. The applicant shall provide the balance of its unrestricted current assets as of December 31, 2014.

Please see attached.

#### **IV. Experience and Capability**

##### **A. Necessary Skills and Experience**

Maui Prep has a proven track record of successful grant administration, and of effective development and coordination of public, private and community support. Local, national, public and private sources have donated over \$8,017,374.00 million to date to support the overall goal of Maui Prep to provide opportunities for academic achievement and enrichment for motivated and often under-resourced West Maui students and their families. This is in addition to over \$5,838,544 in in-kind and volunteer services contributed to date.

Maui Preparatory Academy has successfully completed capital improvement projects of this scope and size. In 2005, Maui Prep converted Maui Land and Pineapple Company's (MLP) dormitory facilities to classroom and school support facilities to accommodate students. In 2011, Maui Prep successfully acquired fee simple interest land, school buildings, and improvements when MLP directly transferred the fee simple interest land, buildings, and improvements to the Foundation for a nominal sum of \$100.

##### **B. Facilities**

The existing facility is located off Honoapiilani Highway in Lahaina, Island of Maui, and State of Hawaii. The subject's underlying land consists of two lots totaling 21.855 acres. Building improvements currently consist of eight single-story structures with gross building areas ranging from 432 to 4,193 square feet. Additional site improvements include a basketball court and adequate asphalt-paved parking. Designated open space, paths, mature landscape and academic buildings define the academic core. The Academy has been well maintained, is of good construction quality and in good condition. Maui Preparatory Academy was appraised at 12,830,000 in 2011.

## V. Personnel: Project Organization and Staffing

### A. Proposed Staffing, Staff Qualifications, Supervision and Training

Maui Prep's Board of Trustees is composed of 14 members. As describes below, the Board of Trustees will undertake the administration of the Honoapiilani Highway and Napilihau Intersection Improvement project.

The members of the Board of Trustees are as follows:

#### **Board President**

Dean Otto Philanthropist, AIM member, Founders LLC, Realtor, Sakamoto Properties, Parent

#### **Vice President**

Dana Howeth CEO, Community Clinic of Maui, Parent

#### **Secretary**

Ray Chin Realtor, Maui International Properties, AIM member, Parent

#### **Treasurer**

Sherrie Narayan Retired Army Corp of Engineers, Parent

#### **Directors**

Dr. Kari Adams	Physician, Doctor's On Call, Parent
Chuck Bergson	Owner/CEO, Pacific Media Group, Parent
Pamela English	Project Manager, Nan, Inc.
Jim Falk	CEO/President, Valley Isle Motors & Jim Falk Motors of Maui
Mary Anne Fitch	Realtor, Maui International Properties, Founder of AIM
Lisa Gibson	Owner, Warren & Annabelle's, Magic, Parent
Brian Graham	Director, Graham Family Foundation, Parent
Paris Nabavi	Owner, Pizza Paradisio, Partner, Pueo Power LLC, Parent
Kelly Pitzer	Owner, Pitzer Built Construction, Parent
Karen Sagar	Owner, K3 Marketing, Parent

The Board of Trustees will hire a qualified annual consultant to manage the construction of intersection improvements.

The Board of Trustees will work with the schools internal administrative staff, shown to have robust facilities management capability, to document and record construction activities. Long-term staff, Cathi Minami, Stacy Casco, and Michelle Pupunu have been responsible for a variety of planning, programming and logistical duties and have a combined 30 years of project management experience.



**B. Organization Chart**

Please see attached.

**C. Compensation**

Below is the three highest paid officers, directors, or employees of the organization by position.

Head of School	Jonathan L. Silver PhD	\$155,000
Principal	Ryan Kirkham	\$76,500
College Counselor	Keenan Reader	\$71,917

**VI. Other****A. Litigation**

The applicant shall disclose any pending litigation to which they are a party, including the disclosure of any outstanding judgment. If applicable, please explain.

*"Not applicable"*

**B. Licensure or Accreditation**

In the spring of 2008, Maui Prep received a 3-year accreditation from the Hawaii Association of Independent Schools (HAIS) and Western Association of Schools and Colleges (WASC) and has recently completed its second accreditation visit for a new six-year term.

**C. Federal and County Grants**

The applicant shall separately specify the amount of federal and county grants awarded since July 1, 2014.

*"Not applicable"*

**D. Private Educational Institutions**

This GIA proposal requests funding support from the State Grant in Aid program to provide intersection improvements along a major transportation artery serving West Maui that is plagued with inadequate infrastructure. Funding support will improve traffic flow to the immediate region not only to accommodate the traffic demands as a result of enrollment growth at Maui preparatory Academy but also to accommodate the increase in overall growth of the area and nearby communities.

The Highways Division recognizes their need to contribute to this regional and local transportation improvement as stated in the Land Use Committee Report No. 05-51.

**E. Future Sustainability Plan**

The proposed improvements will sustain the intersection at a LOS B until enrollment figures at Maui Prep exceed 540 students.

**F. Certificate of Good Standing (If the Applicant is an Organization)**

Please see attached.



## **DECLARATION STATEMENT**

**DECLARATION STATEMENT OF  
APPLICANTS FOR GRANTS AND SUBSIDIES PURSUANT TO  
CHAPTER 42F, HAWAI'I REVISED STATUTES**

The undersigned authorized representative of the applicant certifies the following:

- 1) The applicant meets and will comply with all of the following standards for the award of grants and subsidies pursuant to Section 42F-103, Hawai'i Revised Statutes:
  - a) Is licensed or accredited, in accordance with federal, state, or county statutes, rules, or ordinances, to conduct the activities or provide the services for which a grant or subsidy is awarded;
  - b) Complies with all applicable federal and state laws prohibiting discrimination against any person on the basis of race, color, national origin, religion, creed, sex, age, sexual orientation, or disability;
  - c) Agrees not to use state funds for entertainment or lobbying activities; and
  - d) Allows the state agency to which funds for the grant or subsidy were appropriated for expenditure, legislative committees and their staff, and the auditor full access to their records, reports, files, and other related documents and information for purposes of monitoring, measuring the effectiveness, and ensuring the proper expenditure of the grant or subsidy.
- 2) The applicant meets the following requirements pursuant to Section 42F-103, Hawai'i Revised Statutes:
  - a) Is incorporated under the laws of the State; and
  - b) Has bylaws or policies that describe the manner in which the activities or services for which a grant or subsidy is awarded shall be conducted or provided.
- 3) If the applicant is a non-profit organization, it meets the following requirements pursuant to Section 42F-103, Hawai'i Revised Statutes:
  - a) Is determined and designated to be a non-profit organization by the Internal Revenue Service; and
  - b) Has a governing board whose members have no material conflict of interest and serve without compensation.

Pursuant to Section 42F-103, Hawai'i Revised Statutes, for grants or subsidies used for the acquisition of land, when the organization discontinues the activities or services on the land acquired for which the grant or subsidy was awarded and disposes of the land in fee simple or by lease, the organization shall negotiate with the expending agency for a lump sum or installment repayment to the State of the amount of the grant or subsidy used for the acquisition of the land.

Further, the undersigned authorized representative certifies that this statement is true and correct to the best of the applicant's knowledge.

Jonathan L. Siver, PhD  
(Typed Name of Individual or Organization)

  
(Signature) 1/12/15  
(Date)

Jonathan L. Silver, PhD  
(Typed Name)

Head of School  
(Title)



## **ORGANIZATIONAL CHART**

---



**MAUI PREPARATORY**  
ACADEMY

Located in Napili

PMB #186

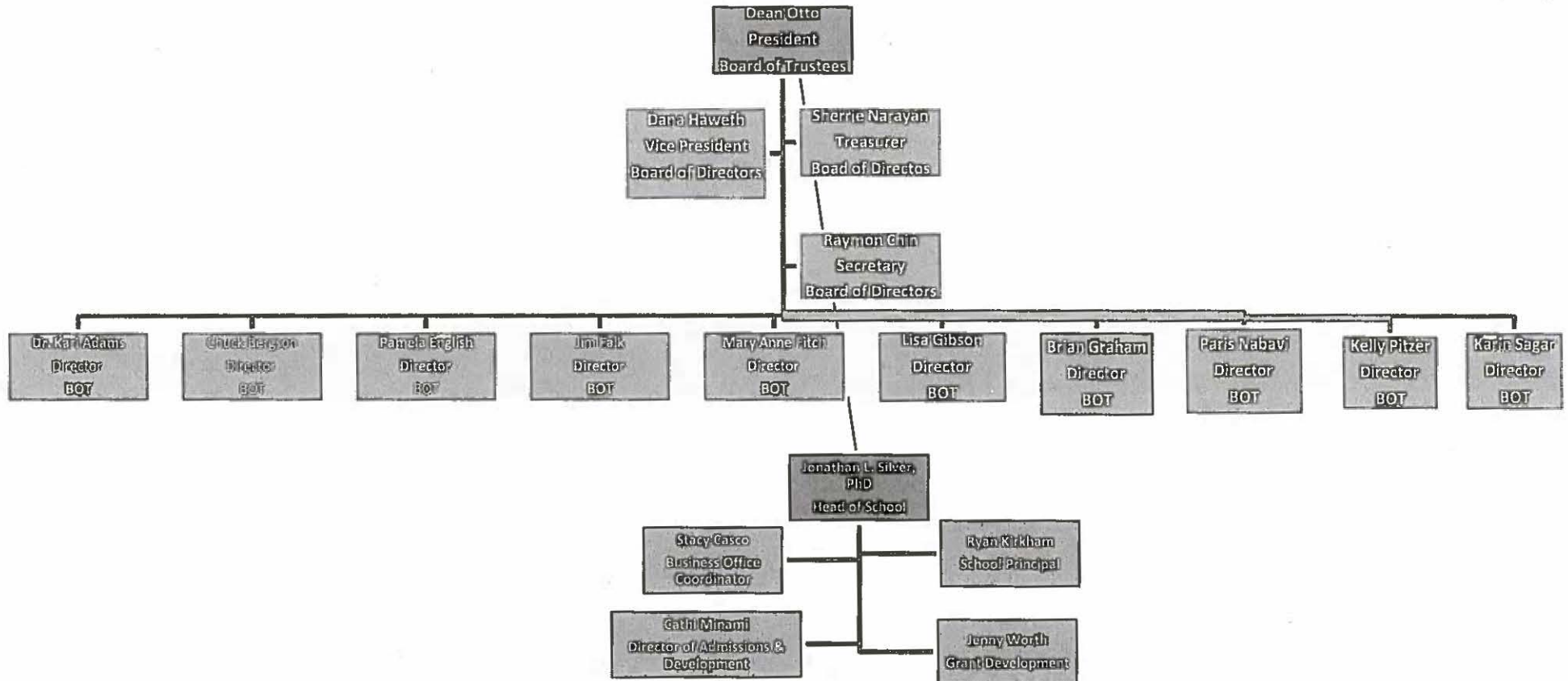
5095 Napilihau Street, #109B

Lahaina, HI 96761

Office (808) 665-9966

Fax (808) 665-1075

[www.mauiprep.org](http://www.mauiprep.org)



1/27/2015



**BALANCE OF UNRESTRICTED CURRENT ASSETS**





## **BUDGET FORMS**

**BUDGET REQUEST BY SOURCE OF FUNDS**

Period: July 1, 2015 to June 30, 2016

Applicant: \_\_\_\_\_ MAUI PREPARATORY ACADEMY

<b>BUDGET CATEGORIES</b>	<b>Total State Funds Requested (a)</b>	<b>Total Federal Funds Requested (b)</b>	<b>Total County Funds Requested (c)</b>	<b>Total Private/Other Funds Requested (d)</b>
<b>A. PERSONNEL COST</b>				
1. Salaries	36,185			
2. Payroll Taxes & Assessments				
3. Fringe Benefits				
<b>TOTAL PERSONNEL COST</b>	<b>36,185</b>			
<b>B. MATERIALS</b>				
1. Materials	33,716			
2. Equipment	19,078			
3. Subcontractors	262,596			
General Requirements				
4. bond fee	2,524			
5. Fee	33,452			
6.GET	15,335			
7. GL	1,935			
8. HO Overhead	15,814			
<b>TOTAL OTHER CURRENT EXPENSES</b>	<b>384,450</b>			
<b>C. EQUIPMENT PURCHASES</b>				
<b>D. MOTOR VEHICLE PURCHASES</b>				
<b>E. CAPITAL</b>	<b>384,450</b>			
<b>TOTAL (A+B+C+D+E)</b>	<b>384,450</b>			
<b>SOURCES OF FUNDING</b>		<b>Budget Prepared By:</b>		
(a) Total State Funds Requested	384,450	Jenny Worth	(808) 665-9966	
(b) Total Federal Funds Requested		Name (Please type or print)	Phone	
(c) Total County Funds Requested				1/12/15
(d) Total Private/Other Funds Requested		Signature of Authorized Official		Date
<b>TOTAL BUDGET</b>	<b>384,450</b>	Jonathan L. Silver PhD		
		Name and Title (Please type or print)		

## BUDGET JUSTIFICATION - EQUIPMENT AND MOTOR VEHICLES

Period: July 1, 2015 to June 30, 2016

Applicant: MAUI PREPARATORY ACADEMY

DESCRIPTION EQUIPMENT	NO. OF ITEMS	COST PER ITEM	TOTAL COST
Demo and Earthwork	1.00	\$18,127.81	\$ 18,127.81
Base Course, Paving, Pavement Marking and Sinage	1	\$753.37	\$ 753.37
Miscellaneous Items	1	\$196.59	\$ 196.59
			\$ -
			\$ -
<b>TOTAL:</b>	<b>3</b>		<b>\$ 19,077.77</b>

JUSTIFICATION/COMMENTS:

DESCRIPTION OF MOTOR VEHICLE	NO. OF VEHICLES	COST PER VEHICLE	TOTAL COST
			\$ -
			\$ -
			\$ -
			\$ -
			\$ -
<b>TOTAL:</b>			<b>\$ -</b>

JUSTIFICATION/COMMENTS:



## BUDGET JUSTIFICATION - CAPITAL PROJECT DETAILS

Period: July 1, 2015 to June 30, 2016

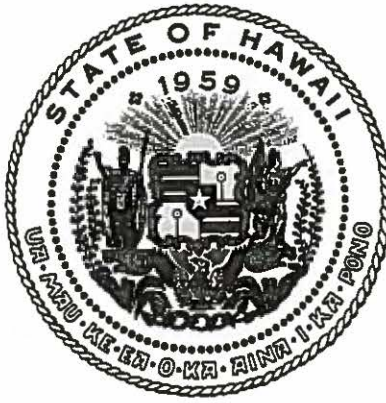
Applicant: Maui Preparatory Academy

FUNDING AMOUNT REQUESTED						
TOTAL PROJECT COST	ALL SOURCES OF FUNDS RECEIVED IN PRIOR YEARS		STATE FUNDS REQUESTED	OTHER SOURCES OF FUNDS REQUESTED	FUNDING REQUIRED IN SUCCEEDING YEARS	
	FY: 2013-2014	FY: 2014-2015	FY:2015-2016	FY:2015-2016	FY:2016-2017	FY:2017-2018
PLANS						
LAND ACQUISITION						
DESIGN						
CONSTRUCTION			384450			
EQUIPMENT						
<b>TOTAL:</b>			<b>384,450</b>			
<b>JUSTIFICATION/COMMENTS:</b>	Funding will provide intersection improvements along a major transportation artery serving West Maui that is already plagued with inadequate infrastructure. Funding support will improve traffic flow to the immediate region not only to accommodate the traffic demands as a result of enrollment growth at Maui preparatory Academy but also to accommodate the increase in overall growth of the area and nearby communities.					

SUMMARY:								
Maul Prep. Academy - Intersection Improvement								
Description	%	Equipment	Labor	Materials	Subs	Total	Marke Up	Submittal
Leave this row blank						\$ -		
Demo & Earthwork		\$ 14,293.00	\$ 17,299.00	\$ 2,100.00	\$ 20,800.00	\$ 54,492.00	1.2683	\$ 69,110.70
Base Course, Paving, Pavement Marking and Sinage		\$ 594.00	\$ 1,520.00	\$ 3,200.00	\$ 147,159.00	\$ 152,473.00	1.2683	\$ 193,377.29
Electrical Work	wass	\$ -	\$ -	\$ -	\$ 42,000.00	\$ 42,000.00	1.2683	\$ 53,267.44
Miscellaneous items		\$ 155.00	\$ 9,711.00	\$ 21,284.00	\$ 23,014.00	\$ 54,164.00	1.2683	\$ 68,694.70
Leave this row blank						\$ -		
<b>Total</b>		<b>\$ 15,042.00</b>	<b>\$ 28,530.00</b>	<b>\$ 26,584.00</b>	<b>\$ 232,973.00</b>	<b>\$ 303,129.00</b>		
		4.98%	9.41%	8.77%	76.86%	100.00%		\$ 384,450.12
Direct Cost			303,129					
GENERAL REQUIREMENTS			\$ 13,150.00	one month- one PM				
			\$ 316,279.00					
H.O. Overhead	5.00%	15,814	332,093					
Builders Risk (0.6-0.65)		0	332,093					
Labor Contingency (OT)	0.00%	0	332,093					
Permit	0.00%	0	332,093					
Bond fee (0.6-0.65)	0.78%	2,524	334,617					
Fee	10.00%	33,462	368,079					
GET	4.167%	15,336	383,415					
GL	0.27%	1,035	\$ 384,450.12	BID	1.268272329			
		68,171	384,450.12	check				
		marke up	1.2683					

**CERTIFICATE OF GOOD STANDING**





## Department of Commerce and Consumer Affairs

### CERTIFICATE OF GOOD STANDING

I, the undersigned Director of Commerce and Consumer Affairs of the State of Hawaii, do hereby certify that

#### MAUI PREPARATORY ACADEMY

was incorporated under the laws of Hawaii on 03/13/2001 ; that it is an existing nonprofit corporation; and that, as far as the records of this Department reveal, has complied with all of the provisions of the Hawaii Nonprofit Corporations Act, regulating domestic nonprofit corporations.

IN WITNESS WHEREOF, I have hereunto set my hand and affixed the seal of the Department of Commerce and Consumer Affairs, at Honolulu, Hawaii.

Dated: January 20, 2015

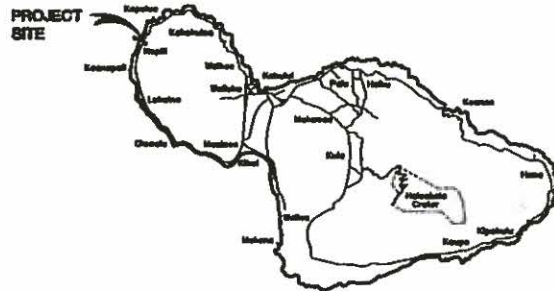
Interim Director of Commerce and Consumer Affairs



## **PROJECT PLANS**

# HONOAPIILANI HIGHWAY AND NAPILIHOU STREET INTERSECTION IMPROVEMENTS

NAPILI, MAUI, HAWAII



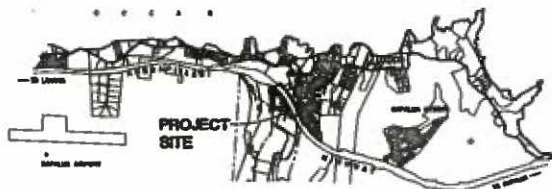
**MAP OF MAUI**  
SCALE 1:50,000

PREPARED FOR:

MAUI PREPARATORY ACADEMY  
PMB #186  
5095 NAPILIHOU STREET #109B  
LAHAINA, HAWAII 96761

PREPARED BY:

**RFE** RONALD M. FUKUMOTO ENGINEERING, INC.  
Civil Engineering & Land Surveying Consultants  
1721 Wili Pa Loop, Suite 203 - Waikuku, Hawaii 96793



**VICINITY MAP**  
SCALE 1:50,000

## APPROVALS:

CHEF, MAUI COUNTY ENGINEERING  
STATE DEPARTMENT OF TRANSPORTATION  
(APPROVAL LIMITED TO WORK WITHIN STATE  
RIGHT-OF-WAY ONLY. ID. NO. ME-08-101 LETTER OF  
APPROVAL NO. HVT. M DATED )

DATE

## INDEX OF DRAWINGS

SHT.	SHT. NO.	DESCRIPTION
1	T-1	TITLE SHEET
2	C-1	CONSTRUCTION NOTES
3	D-2	BEST MANAGEMENT PRACTICES PLAN
4	C-3	DEMOLITION PLAN
5	C-4	IMPROVEMENT PLAN
6	C-5	SHOWING AND PAVEMENT MARKING PLAN
7	C-6	ROADWAY DETAILS
8	C-7	TRAFFIC SIGNAL MODIFICATION PLAN
9	C-8	TRAFFIC SIGNAL DETAILS
10	C-9	TRAFFIC CONTROL PLAN



CONSTRUCTION NOTES

GENERAL NOTES

- 1. LOCATION OF EXISTING UTILITY SERVICES ARE SHOWN ON AVAILABLE "AS-BUILT" RECORD DRAWINGS AND THE CONTRACTOR SHALL VERIFY THE LOCATION AND DEPTH OF ALL UTILITIES PRIOR TO CONSTRUCTION.
2. EXISTING UTILITIES AND SERVICES ARE SHOWN ON A REPRESENTATIVE SURVEY DATED SEPTEMBER 15, 2003 TO INCLUDE SURVEY INFORMATION AS PROVIDED BY THE ENGINEER, SURVEYOR, AND RECORD DRAWINGS.
3. EXISTING UTILITIES ARE SHOWN ON EXISTING RECORD DRAWINGS INCLUDING BUT NOT LIMITED TO: WATER, SEWER, GAS, TELEPHONE, AND CABLE.
4. EXISTING UTILITIES SHALL BE PROTECTED BY THE CONTRACTOR AT ALL TIMES. THE CONTRACTOR SHALL BE RESPONSIBLE FOR ANY DAMAGE TO EXISTING UTILITIES.
5. THE CONTRACTOR SHALL MAINTAIN THE EXISTING UTILITIES AT ALL TIMES AND SHALL BE RESPONSIBLE FOR ANY DAMAGE TO EXISTING UTILITIES.
6. THE CONTRACTOR SHALL MAINTAIN THE EXISTING UTILITIES AT ALL TIMES AND SHALL BE RESPONSIBLE FOR ANY DAMAGE TO EXISTING UTILITIES.
7. THE CONTRACTOR SHALL MAINTAIN THE EXISTING UTILITIES AT ALL TIMES AND SHALL BE RESPONSIBLE FOR ANY DAMAGE TO EXISTING UTILITIES.
8. THE CONTRACTOR SHALL MAINTAIN THE EXISTING UTILITIES AT ALL TIMES AND SHALL BE RESPONSIBLE FOR ANY DAMAGE TO EXISTING UTILITIES.
9. THE CONTRACTOR SHALL MAINTAIN THE EXISTING UTILITIES AT ALL TIMES AND SHALL BE RESPONSIBLE FOR ANY DAMAGE TO EXISTING UTILITIES.
10. THE CONTRACTOR SHALL MAINTAIN THE EXISTING UTILITIES AT ALL TIMES AND SHALL BE RESPONSIBLE FOR ANY DAMAGE TO EXISTING UTILITIES.
11. THE CONTRACTOR SHALL MAINTAIN THE EXISTING UTILITIES AT ALL TIMES AND SHALL BE RESPONSIBLE FOR ANY DAMAGE TO EXISTING UTILITIES.

NOTES FOR CONSTRUCTION WITHIN STATE RIGHT-OF-WAY

- 1. THE CONTRACTOR SHALL OBTAIN A PERMIT TO EXCAVATE FROM THE STATE ENGINEER PRIOR TO CONSTRUCTION.
2. CONSTRUCTION AND REMEDIATION OF ALL EXISTING UTILITY FACILITIES SHALL BE IN ACCORDANCE WITH THE STANDARD SPECIFICATIONS FOR HIGHWAY CONSTRUCTION.
3. THE CONTRACTOR SHALL MAINTAIN THE EXISTING UTILITIES AT ALL TIMES AND SHALL BE RESPONSIBLE FOR ANY DAMAGE TO EXISTING UTILITIES.
4. THE CONTRACTOR SHALL MAINTAIN THE EXISTING UTILITIES AT ALL TIMES AND SHALL BE RESPONSIBLE FOR ANY DAMAGE TO EXISTING UTILITIES.
5. THE CONTRACTOR SHALL MAINTAIN THE EXISTING UTILITIES AT ALL TIMES AND SHALL BE RESPONSIBLE FOR ANY DAMAGE TO EXISTING UTILITIES.
6. THE CONTRACTOR SHALL MAINTAIN THE EXISTING UTILITIES AT ALL TIMES AND SHALL BE RESPONSIBLE FOR ANY DAMAGE TO EXISTING UTILITIES.
7. THE CONTRACTOR SHALL MAINTAIN THE EXISTING UTILITIES AT ALL TIMES AND SHALL BE RESPONSIBLE FOR ANY DAMAGE TO EXISTING UTILITIES.
8. THE CONTRACTOR SHALL MAINTAIN THE EXISTING UTILITIES AT ALL TIMES AND SHALL BE RESPONSIBLE FOR ANY DAMAGE TO EXISTING UTILITIES.
9. THE CONTRACTOR SHALL MAINTAIN THE EXISTING UTILITIES AT ALL TIMES AND SHALL BE RESPONSIBLE FOR ANY DAMAGE TO EXISTING UTILITIES.
10. THE CONTRACTOR SHALL MAINTAIN THE EXISTING UTILITIES AT ALL TIMES AND SHALL BE RESPONSIBLE FOR ANY DAMAGE TO EXISTING UTILITIES.
11. THE CONTRACTOR SHALL MAINTAIN THE EXISTING UTILITIES AT ALL TIMES AND SHALL BE RESPONSIBLE FOR ANY DAMAGE TO EXISTING UTILITIES.

- 12. THE PERMIT TO EXCAVATE FROM THE STATE ENGINEER SHALL BE OBTAINED PRIOR TO CONSTRUCTION.
A. WORK PERFORMED SHALL BE AFTER PERMITTED HOURS.
B. PERMIT TO EXCAVATE MUST BE MAINTAINED AT ALL TIMES.
C. PERMIT TO EXCAVATE MUST BE MAINTAINED AT ALL TIMES.
D. PERMIT TO EXCAVATE MUST BE MAINTAINED AT ALL TIMES.
E. PERMIT TO EXCAVATE MUST BE MAINTAINED AT ALL TIMES.

GRAZING NOTES

- 1. PERMITS FOR EXCAVATION AND OTHER WORK SHALL BE OBTAINED FROM THE STATE ENGINEER PRIOR TO CONSTRUCTION.
2. THE CONTRACTOR SHALL MAINTAIN THE EXISTING UTILITIES AT ALL TIMES AND SHALL BE RESPONSIBLE FOR ANY DAMAGE TO EXISTING UTILITIES.
3. THE CONTRACTOR SHALL MAINTAIN THE EXISTING UTILITIES AT ALL TIMES AND SHALL BE RESPONSIBLE FOR ANY DAMAGE TO EXISTING UTILITIES.
4. THE CONTRACTOR SHALL MAINTAIN THE EXISTING UTILITIES AT ALL TIMES AND SHALL BE RESPONSIBLE FOR ANY DAMAGE TO EXISTING UTILITIES.
5. THE CONTRACTOR SHALL MAINTAIN THE EXISTING UTILITIES AT ALL TIMES AND SHALL BE RESPONSIBLE FOR ANY DAMAGE TO EXISTING UTILITIES.
6. THE CONTRACTOR SHALL MAINTAIN THE EXISTING UTILITIES AT ALL TIMES AND SHALL BE RESPONSIBLE FOR ANY DAMAGE TO EXISTING UTILITIES.
7. THE CONTRACTOR SHALL MAINTAIN THE EXISTING UTILITIES AT ALL TIMES AND SHALL BE RESPONSIBLE FOR ANY DAMAGE TO EXISTING UTILITIES.
8. THE CONTRACTOR SHALL MAINTAIN THE EXISTING UTILITIES AT ALL TIMES AND SHALL BE RESPONSIBLE FOR ANY DAMAGE TO EXISTING UTILITIES.
9. THE CONTRACTOR SHALL MAINTAIN THE EXISTING UTILITIES AT ALL TIMES AND SHALL BE RESPONSIBLE FOR ANY DAMAGE TO EXISTING UTILITIES.
10. THE CONTRACTOR SHALL MAINTAIN THE EXISTING UTILITIES AT ALL TIMES AND SHALL BE RESPONSIBLE FOR ANY DAMAGE TO EXISTING UTILITIES.



RONALD M. FURUKOTO ENGINEERING, INC. Civil Engineering & Land Surveying Consultants 1721 W. Pepee Lane, Suite 1027 Honolulu, Hawaii 96815 Phone: (808) 948-0111 Fax: (808) 944-7910 E-Mail: rfe@rfeinc.com

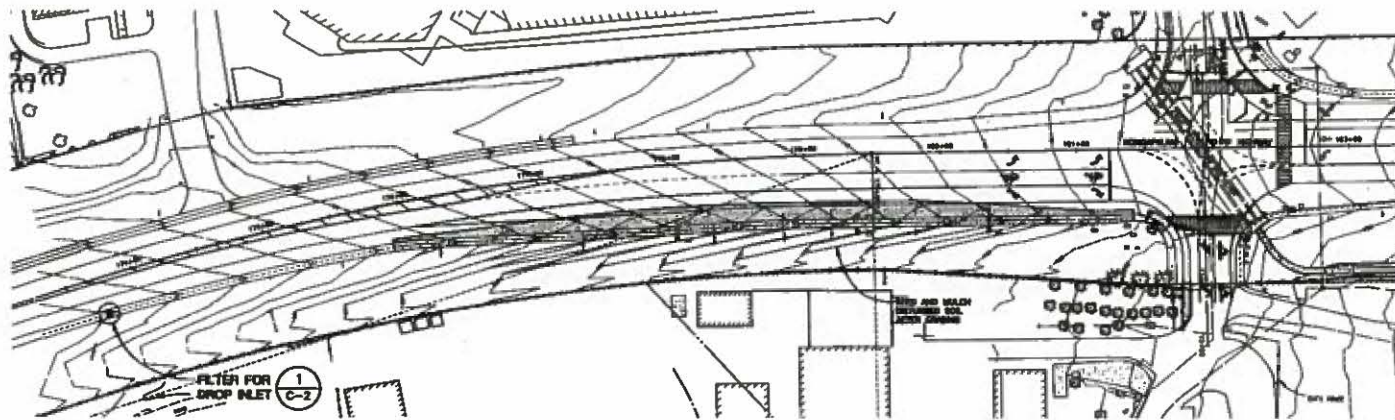
Prepared At: Honolulu, Hawaii

HONOLULU HIGHWAY AND MAPULAHU STREET INTERSECTION IMPROVEMENTS MAPULAHU, HAWAII CONSTRUCTION NOTES



SEALED AND SIGNED BY ME OR MY DEPUTY IN WITNESS WHEREOF I HAVE HEREUNTO SET MY HAND AND SEAL THIS 15th DAY OF SEPTEMBER 2004.

DESIGNED BY: R.M.F. DRAWN BY: R.M.F. CHECKED BY: R.M.F. DATE: SEPTEMBER 4, 2004 FILE NO.: 10000 SHEET C-1 2 OF 10



**BEST MANAGEMENT AND PRACTICES PLAN**  
 SCALE 1" = 40'

**BEST MANAGEMENT PLAN NOTES:**

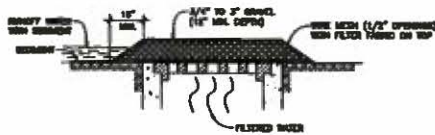
THE FOLLOWING MEASURES SHALL BE TAKEN DURING CONSTRUCTION:

1. PREVENT EROSION PRODUCTS, OIL, PAUL, AND OTHER HAZARDOUS SUBSTANCES FROM CONTAMINATING SITE.
2. AVOID FUELLEANS AND OILS, OR APPLY ONLY EXCESS PORTIONS OF LUBRICANTS TO SPECIFIC EQUIPMENT, AS APPROPRIATE.
3. COVER OPEN UNPAVED CHANGES, BILLS, BRUSH, OR OTHER PORTABLE DEBRIS.
4. MAINTAIN PROPER CHANNELS, FURROWS, SUCH AS BARRIERS.
5. STOP WORK-OFF-SITE.
6. AVOID WORKING ON THE LAST POSSIBLE DATE.
7. EXISTING GRADED AREAS BY EXISTING OR PLANNED AS WELL AS POSSIBLE. REPAIRS SHOULD BE MADE TO MAINTAIN PROPER DRAINAGE PATTERNS, AND THE WORK SHOULD BE DONE TO MAINTAIN PROPER DRAINAGE.

**EROSION CONTROL NOTES**

THE FOLLOWING IS AN OUTLINE OF THE EROSION CONTROL MEASURES THAT SHALL BE IMPLEMENTED FOR THIS PROJECT.

1. GENERAL EROSION CONTROL MEASURES
  - a. EROSION CONTROL MEASURES SHALL BE INSTALLED PRIOR TO COMPLETE CONSTRUCTION.
  - b. EROSION CONTROL MEASURES SHALL BE MAINTAINED THROUGHOUT CONSTRUCTION.
  - c. EROSION CONTROL MEASURES SHALL BE MAINTAINED THROUGHOUT CONSTRUCTION.
  - d. EROSION CONTROL MEASURES SHALL BE MAINTAINED THROUGHOUT CONSTRUCTION.
  - e. EROSION CONTROL MEASURES SHALL BE MAINTAINED THROUGHOUT CONSTRUCTION.
  - f. EROSION CONTROL MEASURES SHALL BE MAINTAINED THROUGHOUT CONSTRUCTION.
  - g. EROSION CONTROL MEASURES SHALL BE MAINTAINED THROUGHOUT CONSTRUCTION.
2. BEST-MANAGEMENT EROSION CONTROL MEASURES
  - a. BEST-MANAGEMENT EROSION CONTROL MEASURES SHALL BE INSTALLED PRIOR TO COMPLETE CONSTRUCTION.
  - b. BEST-MANAGEMENT EROSION CONTROL MEASURES SHALL BE MAINTAINED THROUGHOUT CONSTRUCTION.
  - c. BEST-MANAGEMENT EROSION CONTROL MEASURES SHALL BE MAINTAINED THROUGHOUT CONSTRUCTION.
  - d. BEST-MANAGEMENT EROSION CONTROL MEASURES SHALL BE MAINTAINED THROUGHOUT CONSTRUCTION.
  - e. BEST-MANAGEMENT EROSION CONTROL MEASURES SHALL BE MAINTAINED THROUGHOUT CONSTRUCTION.
  - f. BEST-MANAGEMENT EROSION CONTROL MEASURES SHALL BE MAINTAINED THROUGHOUT CONSTRUCTION.
  - g. BEST-MANAGEMENT EROSION CONTROL MEASURES SHALL BE MAINTAINED THROUGHOUT CONSTRUCTION.



**1**  
**C-2**  
**FILTER FOR DROP INLET**  
 NOT TO SCALE



**RONALD M. FLUKEMOTO ENGINEERING, INC.**  
 Civil Engineering & Land Surveying Consultants  
 1751 WAI PALUWA DRIVE #207  
 HONOLULU, HAWAII 96815

Phone: (808) 944-1111  
 Fax: (808) 944-7910  
 E-mail: rfe@rfeinc.com

Prepared for:  
 Honolulu Department of Public Works  
 2000 Kalia Road, Room 2100  
 Honolulu, Hawaii 96815

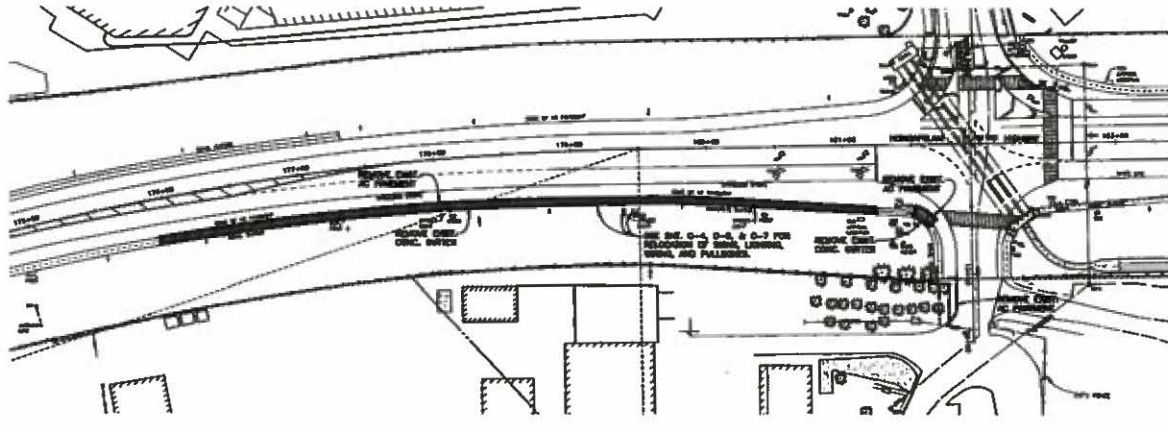
HONOLULU HIGHWAY AND NAUPLUWA STREET  
 INTERSECTION IMPROVEMENTS  
 NAUPLUWA, HAWAII  
 BEST MANAGEMENT PRACTICE PLAN



THIS PLAN WAS PREPARED BY ME OR UNDER MY CLOSE PERSONAL SUPERVISION AND I AM A LICENSED PROFESSIONAL ENGINEER IN THE STATE OF HAWAII. I AM NOT PROVIDING CONTRACT ADMINISTRATION SERVICES.  
 Ronald M. Flukemoto  
 License Expires 04/30/2024

DESIGNED BY: S.A.A.
CHECKED BY: S.A.A., P.E.
DESIGNED ON: 02/23/24
DATE: AUGUST 6, 2024
FILE NO: 24002

SHEET  
**C-2**  
 3 of 10



**DEMOLITION PLAN**  
 SCALE 1" = 40'  
 DATE 11/20/03



**RONALD M. FUKUMOTO ENGINEERING, INC.**  
 Civil Engineering & Land Development Consultants  
 11711 W. Pu Laka, Suite 200  
 Mahalo, Hawaii 96702

Phone: (808) 946-8111  
 Fax: (808) 946-7810  
 E-mail: rfe@rfepe.com

Prepared for:  
 Maui Preparatory Academy  
 P.O. Box 2208  
 2208 Honoapiʻani Street #1008  
 Lahaina, Hawaii 96761

**HONOAPIʻANI HIGHWAY AND NAPILIAU STREET  
 INTERSECTION IMPROVEMENTS  
 NAPILI, MAUI, HAWAII  
 DEMOLITION PLAN**

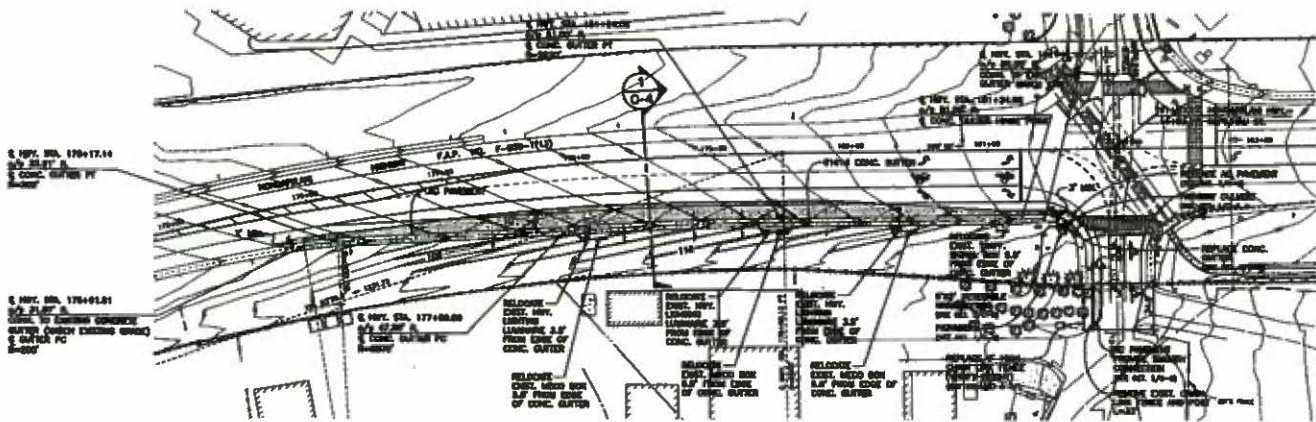


IT IS HEREBY CERTIFIED THAT THE ABOVE IS A TRUE AND CORRECT COPY OF THE ORIGINAL AS SUBMITTED TO THE BOARD OF ENGINEERS OF THE STATE OF HAWAII.  
 Ronald M. Fukumoto  
 License No. 11884

DESIGNED BY: RFE  
 DRAWN BY: RFE, MA  
 CHECKED BY: RFE  
 DATE: 11/20/03  
 FILE NO.: 0303

SHEET  
**C-3**  
 4 of 10





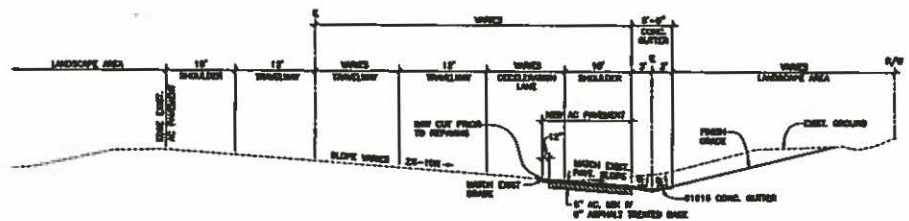
C. REV. 02. 170+17.14  
 1/2\"/>

C. REV. 02. 170+01.01  
 1/2\"/>

**IMPROVEMENT PLAN**

SCALE: 1" = 40'

- NOTES:**
- SEE SHEET 0-7 FOR LAYOUT CORREAS AND SIGN REQUIREMENTS.
  - FOR RELIEVING HIGHWAY LANEWAYS, INSTALL ONE TYP. IN FORWARD FIELD VISIBILITY ZONE AND LOCATE FROM TO FORWARD POINT. FRONT CURBLINE FORMING TO AT LEAST 24 INCHES BELOW FINISH GRADE.



**HONOAPIʻIANI HIGHWAY  
 TYPICAL ROAD SECTION**

SCALE: 1/8" = 1'-0"



**RONALD M. FUNAKOTO ENGINEERING, INC.**  
 Civil Engineering &  
 Land Surveying Consultants  
 1721 W. Pepee Lane, Suite 102  
 Honolulu, Hawaii 96815

Phone: (808) 942-8011  
 Fax: (808) 944-1910  
 E-mail: rfe@rfe-engine.com

Prepared for:  
 Maui Proprietary Academy  
 Post #126  
 2008 Honoapiʻiani Street #1208  
 Lahaina, Hawaii 96761

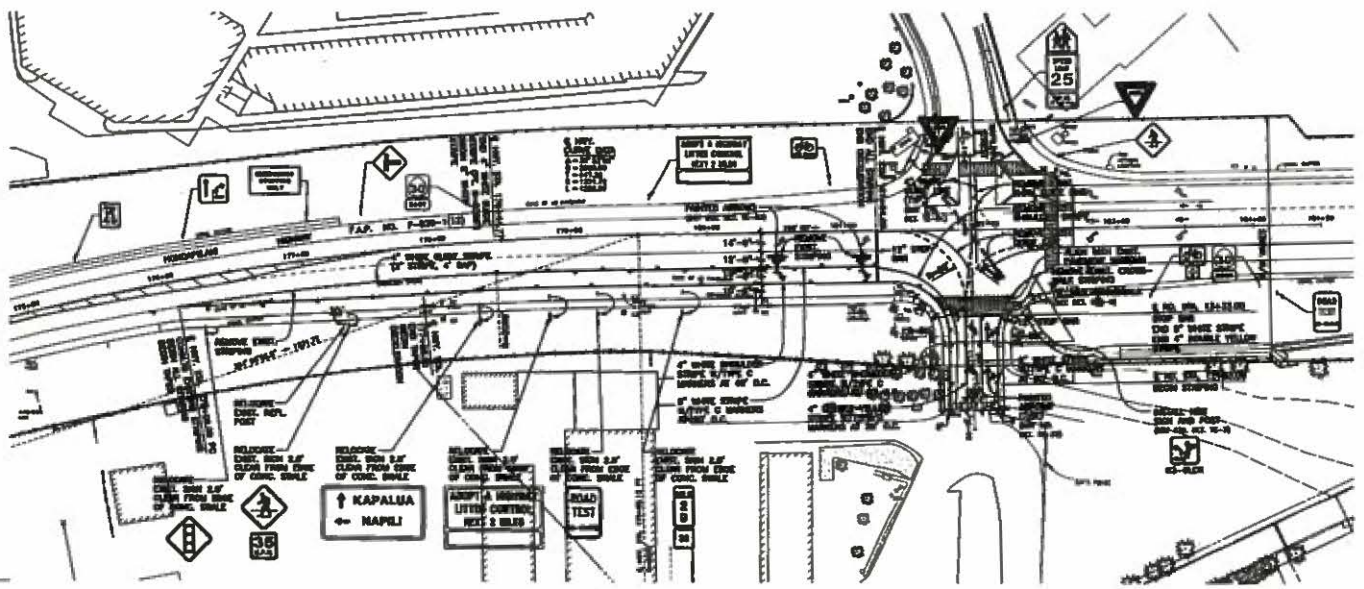
**HONOAPIʻIANI HIGHWAY AND NAPILI HIGHWAY  
 INTERSECTION IMPROVEMENTS  
 NAPILI, MAUI, HAWAII  
 IMPROVEMENT PLAN**



THIS PLAN WAS PREPARED BY  
 ME OR UNDER MY CLOSE PERSONAL  
 SUPERVISION AND I AM A LICENSED  
 PROFESSIONAL ENGINEER IN THE STATE OF HAWAII.  
 M. Funakoto  
 LICENSE NUMBER 11784

DESIGNED BY: R.M.F.  
 CHECKED BY: R.M.F.  
 DRAWN BY: R.M.F.  
 DATE: 08/04/04  
 FILE NO: 0404

SHEET  
**C-4**  
 5 of 10



**SIGN & PAVEMENT MARKING PLAN**  
 SCALE: 1" = 20'



**RONALD M. FURUKOTO ENGINEERING, INC.**  
 Civil Engineering & Land Surveying Consultants  
 1771 14th St. Lower Suite 202  
 Honolulu, Hawaii 96813  
 Phone: (808) 943-8111  
 Fax: (808) 944-7810  
 E-mail: rfe@rfeinc.com

Prepared for:  
 Road Proprietary Authority  
 2500 Kapiolani Street #700  
 Lahaione, Hawaii 96841

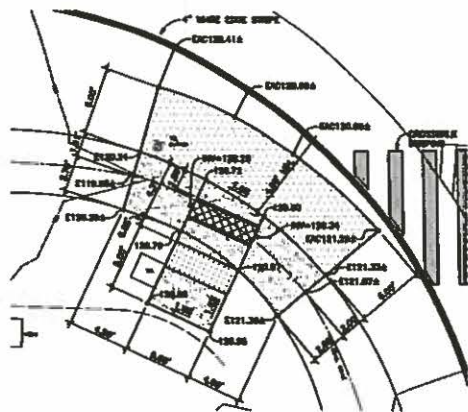
**HONOLULU HIGHWAY AND NAPILIHAI STREET  
 INTERSECTION IMPROVEMENTS  
 NAPILI, MAUI, HAWAII**  
**SIGNING AND PAVEMENT MARKING PLAN**



DATE: 10/15/03  
 DRAWN BY: RFE  
 CHECKED BY: RFE  
 TITLE: PROJECT ENGINEER  
 SIGNATURE: *Ronald M. Furukoto*  
 LICENSE NUMBER: 11184-C

DESIGNED BY: RFE  
 DRAWN BY: RFE, RFE  
 CHECKED BY: RFE  
 DATE: 10/15/03  
 FILE NO: 10000

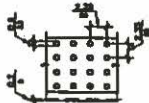
**SHEET**  
**C-5**  
 6 of 10



1 **PATHWAY DETAIL**  
SCALE 1/4" = 1'-0"



**DOMES SECTION**  
SECTION OF DOME FROM A DETECTABLE  
WARNING DEVICE MARK, TOP AND  
BOTTOM SURFACES.

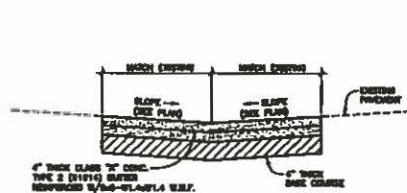


**DOMES SPACING**  
PLAN AND SECTION VIEW OF DETECTABLE  
WARNING DEVICES AND THEIR RELATIVE SPACING  
ON THE X AND Y AXIS.

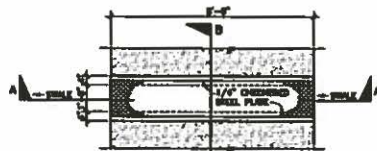


**DOMES ALIGNMENT**  
PLAN VIEW OF DETECTABLE WARNING SURFACE  
SHOWING DEVICES ALIGNED IN ROWS, NOT SPACED  
DIAGONALLY.

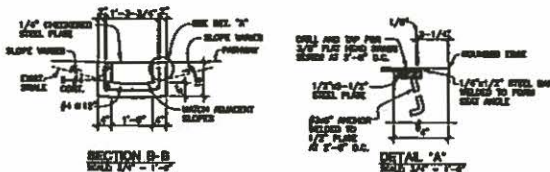
2 **DETECTABLE WARNING  
MAT DETAIL**  
SCALE 1/4" = 1'-0"



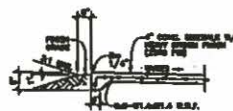
3 **CONCRETE SWALE**  
SCALE 1/4" = 1'-0"



**PLAN**  
SCALE 1/4" = 1'-0"



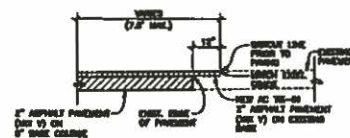
4 **PATHWAY CULVERT**  
SCALE 1/4" = 1'-0"



5 **4\"/>**



6 **CROSSWALK  
STRING DETAIL**  
SCALE 1/4" = 1'-0"



7 **NAPILI HAU STREET  
ASPHALT PAVING SECTION**  
SCALE 1/4" = 1'-0"



**RONALD M.  
FLUKUNOTO  
ENGINEERING, INC.**  
Civil Engineering &  
Land Surveying Consultants  
1771 Wai'anae Lane, Suite 207  
Wai'anae, Hawaii 96792

Phone: (808) 265-0611  
Fax: (808) 265-7210  
E-mail: ron@rfeinc.com

Professional Seal  
State of Hawaii  
Professional Engineer  
No. 11180-0  
License Expiration 12/31/2024

HONOLULU HIGHWAY AND NAPILI HAU STREET  
INTERSECTION IMPROVEMENTS  
NAPILI HAU HAWAII  
ROADWAY DETAILS



THE SEAL OF A REGISTERED  
PROFESSIONAL ENGINEER IN THE  
STATE OF HAWAII IS TO BE USED  
ONLY BY THE ENGINEER TO WHOM  
IT IS ISSUED.  
Ronald M. Flukunoto  
LICENSE EXPIRES 12/31/2024

DESIGNED BY: R.M.F.  
DRAWN BY: R.M.F., R.S.  
CHECKED BY: R.S.  
DATE: JANUARY 4, 2024  
FILE NO.: 2023-001

SHEET  
**C-6**  
7 of 10



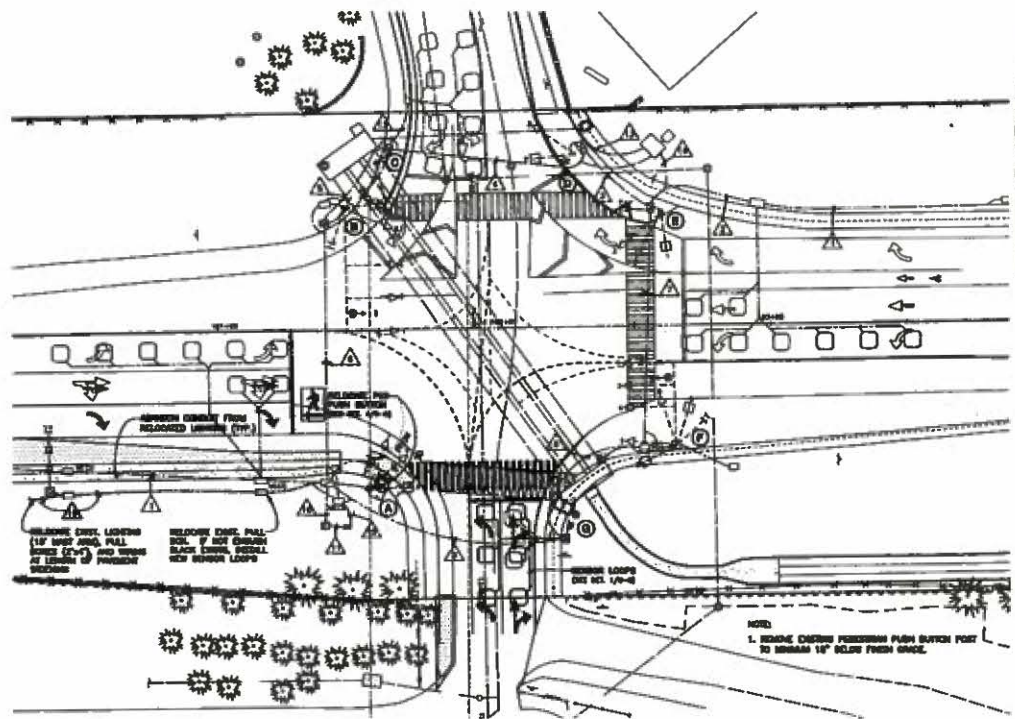


THIS PLAN WAS PREPARED BY ME OR UNDER MY CLOSE PERSONAL SUPERVISION AND I AM A LICENSED PROFESSIONAL ENGINEER IN THE STATE OF HAWAII.  
 Ronald M. Fukunoto  
 LICENSE ENGINEER 11780-A

DESIGNED BY: MAAL  
 CHECKED BY: MAAL, P.E.  
 COUNCILOR BY: MAAL  
 DATE: JANUARY 4, 2010  
 FILE NO.: 15002

	EXIST. CONDUITS	EXIST. CABLE
	3" CONC. ENCASED	2 TYPE 2 NEED POWER CABLE
	EXIST. CONDUITS	EXIST. CABLE
	3" CONC. ENCASED	2 TYPE 2 NEED POWER CABLE
	EXIST. CONDUITS	EXIST. CABLE
	3" CONC. ENCASED	2 TYPE 2 NEED POWER CABLE
	EXIST. CONDUITS	EXIST. CABLE
	3" CONC. ENCASED	2 TYPE 2 NEED POWER CABLE
	EXIST. CONDUITS	EXIST. CABLE
	3" CONC. ENCASED	2 TYPE 2 NEED POWER CABLE
	EXIST. CONDUITS	EXIST. CABLE
	3" CONC. ENCASED	2 TYPE 2 NEED POWER CABLE
	EXIST. CONDUITS	EXIST. CABLE
	3" CONC. ENCASED	2 TYPE 2 NEED POWER CABLE
	EXIST. CONDUITS	EXIST. CABLE
	3" CONC. ENCASED	2 TYPE 2 NEED POWER CABLE

	EXIST. CONDUITS	EXIST. CABLE
	3"	1 TYPE 2
	EXIST. CONDUITS	EXIST. CABLE
	3"	2 TYPE 2 NEED POWER CABLE
	EXIST. CONDUITS	EXIST. CABLE
	3"	NEED POWER CABLE NEED POWER CABLE
	EXIST. CONDUITS	EXIST. CABLE
	3" CONC. ENCASED	NEED POWER CABLE
	EXIST. CONDUITS	EXIST. CABLE
	3" CONC. ENCASED	NEED POWER CABLE
	EXIST. CONDUITS	EXIST. CABLE
	3" CONC. ENCASED	NEED POWER CABLE
	NEW CONDUIT	RELOCATED CABLE
	3" CONC. ENCASED	2 TYPE 2 NEED POWER CABLE



REMOVE EXIST. LIGHTING (1" BUSH BRASS PULL BOXES EXCEPT) AND MOVE AT INTERSECTION PRESENT LOCATIONS

RELOCATE EXIST. PULL BOX (IF NOT EXISTING) BLACK SIGNAL POLE, NEW SIGNAL LOOPS

REMOVE EXIST. SIGNAL POLE WITH LIGHTS AT INTERSECTION

REMOVE EXIST. SIGNAL POLE WITH LIGHTS AT INTERSECTION

NOTE:  
 1. REMOVE EXISTING FERRISSON PUSH BUTTON POST TO REMAIN 12" BELOW FINISH GRADE.

**TRAFFIC SIGNAL MODIFICATION PLAN**

SCALE: 1" = 20'  
 1/4" = 5'

- LEGEND:**
- CONTROLLED CINET
  - ELECTRICAL METER
  - TYPE A PULL BOX (12" x 36")
  - TYPE B PULL BOX (30" x 36")
  - TYPE C PULL BOX (24" x 36")
  - X SCHEDULED LIGHTING WITH LAMPING AT 120V AC

**WORK BY MAAL ELECTRIC COMPANY (DEED)**

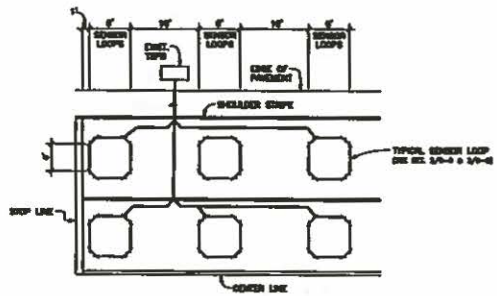
1. NEED TO RELocate EXISTING LIGHTING
2. NEED TO RELocate CABLES IN CONDUITS OVERLIES CONDUIT.



**RONALD M. FUKUMOTO ENGINEERING, INC.**  
 Civil Engineering & Land Surveying Consultants  
 1771 Wai'anae Blvd. Ste. 202  
 Wai'anae, Hawaii 96791  
 Phone: (808) 948-8811  
 Fax: (808) 944-7500  
 E-mail: rfe@rfe-engineering.com

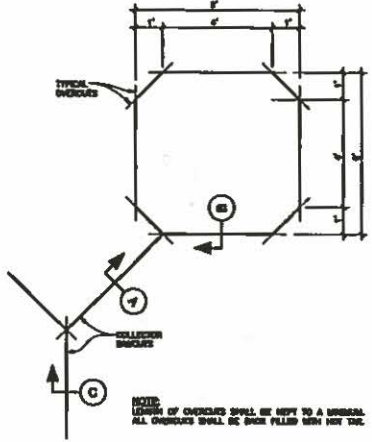
Prepared for:  
 Island Proprietary Authority  
 P.O. Box 100  
 2020 Hahaione Street #100  
 Lihala, Hawaii 96741

HONOLULU HIGHWAY AND NA'ALEHAU STREET  
 INTERSECTION IMPROVEMENTS  
 NA'ALEHAU, HAWAII  
 TRAFFIC SIGNAL DETAILS



- NOTE:**
1. CENTER SENSOR LOOPS IN LANES.
  2. COLLECTION CABLE SHALL BE TURNED 2 TIMES PER FOOT.
  3. NUMBER OF LOOPS AND LACING WAY. SEE PROJECT PLANS.
  4. NUMBER AND LOCATION OF COLLECTION SPLICERS MAY BE VARIED IN THE FIELD TO SUE.

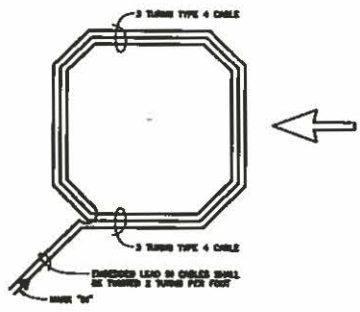
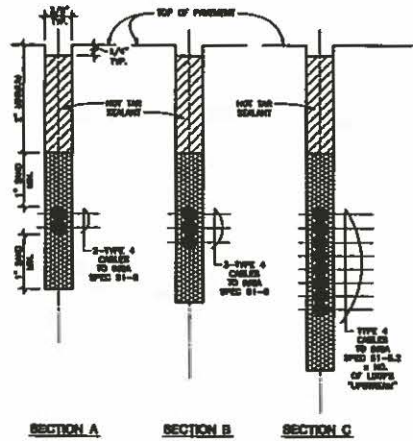
1 TYPICAL SENSOR LOOP LAYOUT  
 NOT TO SCALE



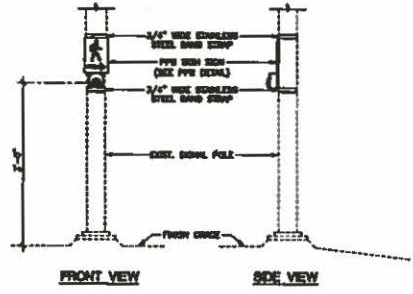
**NOTE:**  
 LENGTH OF OVERLAP SHALL BE KEPT TO A MINIMUM.  
 ALL OVERLAPS SHALL BE BACK FILLED WITH HOT TAC.

FLAN

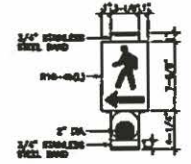
2 TYPICAL SENSOR LOOP SAWCUT DETAIL  
 NOT TO SCALE



3 TYPICAL SENSOR LOOP WIRING DIAGRAM  
 NOT TO SCALE



4 RELOCATE PEDESTRIAN PUSH BUTTON  
 NOT TO SCALE

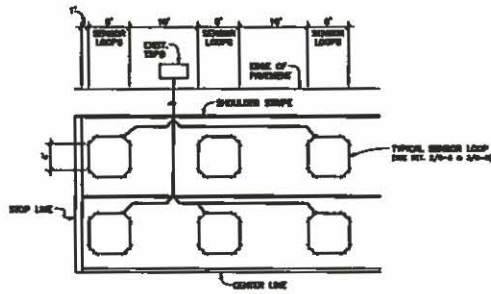


5 PEDESTRIAN PUSH BUTTON  
 NOT TO SCALE



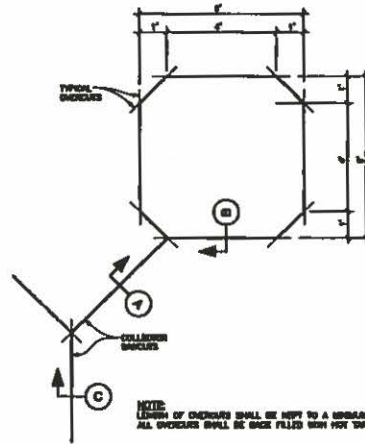
DESIGNED BY: S.A.L. S.A.  
 DRAWN BY: S.A.L. S.A.  
 CHECKED BY: S.A.L. S.A.  
 FILE NO. 2003

SHEET  
 C-8  
 9 of 10

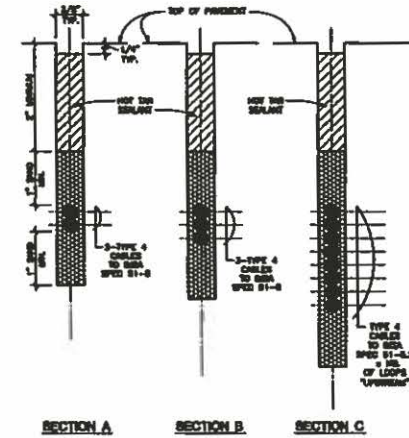


- NOTE:**
1. CORNER SENSOR LOOPS IN LANES.
  2. COLLECTION CABLES SHALL BE TAPPED 2 TURNS PER FOOT.
  3. NUMBER OF LOOPS AND LOCATIONS VARY. SEE PROJECT PLANS.
  4. NUMBER AND LOCATIONS OF COLLECTION SWITCHES MAY BE VARIED IN THE FIELD TO SUIT.

1 TYPICAL SENSOR LOOP LAYOUT  
C-8  
NOT TO SCALE



PLAN

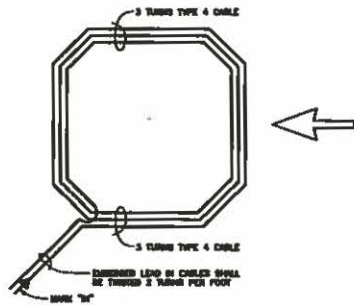


SECTION A

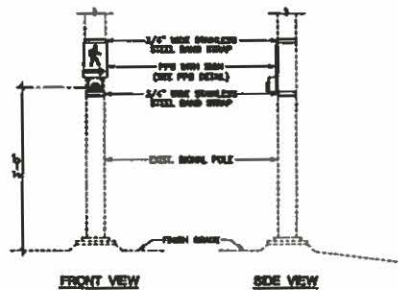
SECTION B

SECTION C

2 TYPICAL SENSOR LOOP SAWCUT DETAIL  
C-8  
NOT TO SCALE

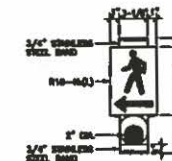


3 TYPICAL SENSOR LOOP WIRING DIAGRAM  
C-8  
NOT TO SCALE



FRONT VIEW SIDE VIEW

4 RELOCATE PEDESTRIAN PUSH BUTTON  
C-8  
NOT TO SCALE



5 PEDESTRIAN PUSH BUTTON  
C-8  
NOT TO SCALE



**RONALD M. FUKUMOTO ENGINEERING, INC.**  
Civil Engineering & Land Surveying Consultants  
1779 West Palmyra Drive #200  
Honolulu, Hawaii 96818

Phone: (808) 948-0611  
Fax: (808) 944-7210  
E-mail: rfe@rfeinc.com

Prepared for:  
Hawaii Department of Transportation  
2005 P105  
2005 Honolulu Street P105  
Honolulu, Hawaii 96814

HONOLULU HERBYWAY AND NAPILAHU STREET  
INTERSECTION IMPROVEMENTS  
NAPILAHU, HAWAII  
TRAFFIC SIGNAL DETAILS



NOT TO BE USED FOR ANY OTHER PROJECT WITHOUT THE WRITTEN PERMISSION OF THE ENGINEER.  
M. S. C.  
LICENSED PROFESSIONAL ENGINEER  
LICENSE NO. 11009-A

DESIGNED BY: RFE  
CHECKED BY: RFE  
DATE: 08/20/04  
PROJECT NO.: 2005 P105

SHEET  
C-8  
9 10





**RONALD M. FUKUMOTO ENGINEERING, INC.**  
 Civil Engineering & Land Surveying Consultants  
 1721 14th Pl, Suite 200  
 Honolulu, Hawaii 96813

Phone (808) 548-8111  
 Fax (808) 548-7910  
 E-mail: rfe@hawaii.rr.com

Prepared for:  
 Aulani Preparatory Academy  
 Plot #128  
 2020 Hahaione Street #1000  
 Lahanu, Hawaii 96741

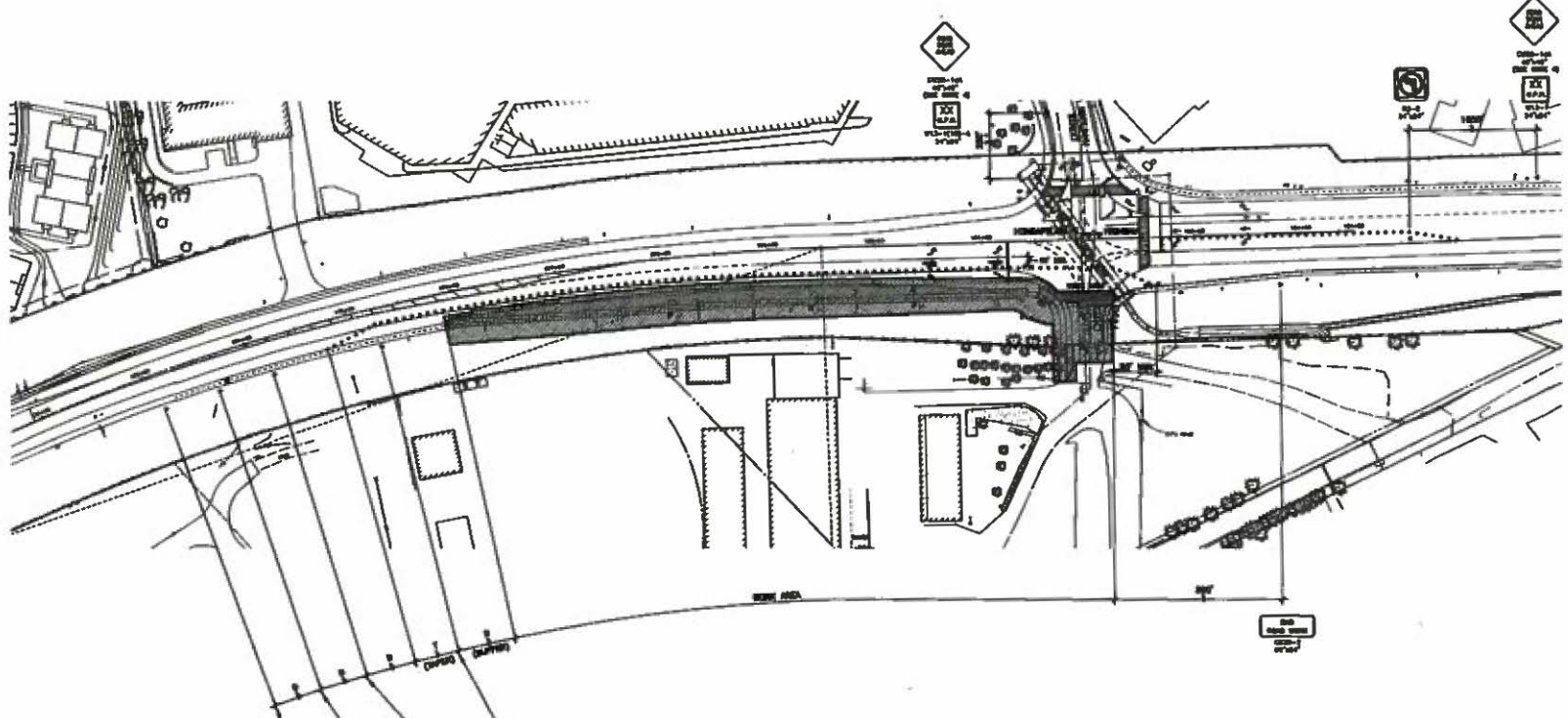
**HONOLULU HIGHWAY AND MAPULANU STREET  
 INTERSECTION IMPROVEMENTS  
 MAPULI, MAUI, HAWAII**  
**TRAFFIC CONTROL PLAN**



DESIGNED BY: RFE  
 CHECKED BY: RFE  
 DATE: 11/10/09  
 SCALE: AS SHOWN

DESIGNED BY: RFE  
 CHECKED BY: RFE  
 DATE: 11/10/09  
 SCALE: AS SHOWN

**SHEET**  
**C-9**  
 10 - 10



**SHOULDER CLOSURE**  
 SET TO RAIL

**NOTES**

1. THIS TRAFFIC CONTROL PLAN IS TO BE USED IN CONJUNCTION WITH THE TRAFFIC CONTROL PLAN OF SHEET C.
2. ALL DIMENSIONS ARE IN FEET UNLESS OTHERWISE NOTED.
3. ALL DIMENSIONS ARE TO CENTERLINE UNLESS OTHERWISE NOTED.
4. ALL DIMENSIONS ARE TO CENTERLINE UNLESS OTHERWISE NOTED.

**LEGEND**

- SIGN
- SIGN ON SHOULDER
- SIGN ON SHOULDER

**NOTE: (1) = SIGN OF LANE OR OFFSET**

**TABLE 1 FOR TRAFFIC CONTROL PLAN**

POSTED SPEED LIMIT (MPH)	SIGN NUMBER (1)	SIGN OFFSET (FT)		SPACING OF SIGNS (FEET)		
		TO LANE CENTERLINE	TO SHOULDER	TO LANE CENTERLINE	TO SHOULDER	TO LANE CENTERLINE
20	200	0	0	20	20	20
25	200	0	0	25	25	25
30	200	0	0	30	30	30
35	200	0	0	35	35	35
40	200	0	0	40	40	40
45	200	0	0	45	45	45
50	200	0	0	50	50	50
55	200	0	0	55	55	55

**GENERAL NOTES FOR TRAFFIC CONTROL PLAN**

1. THE PROPOSED SIGN AND SIGN PLACEMENTS ARE SUBJECT TO THE APPROVAL OF THE HAWAIIAN DEPARTMENT OF TRANSPORTATION, DIVISION OF HIGHWAYS, AND THE HAWAIIAN POLICE DEPARTMENT.
2. ALL DIMENSIONS ARE TO CENTERLINE UNLESS OTHERWISE NOTED.
3. ALL DIMENSIONS ARE TO CENTERLINE UNLESS OTHERWISE NOTED.
4. ALL DIMENSIONS ARE TO CENTERLINE UNLESS OTHERWISE NOTED.
5. ALL DIMENSIONS ARE TO CENTERLINE UNLESS OTHERWISE NOTED.
6. ALL DIMENSIONS ARE TO CENTERLINE UNLESS OTHERWISE NOTED.
7. ALL DIMENSIONS ARE TO CENTERLINE UNLESS OTHERWISE NOTED.
8. ALL DIMENSIONS ARE TO CENTERLINE UNLESS OTHERWISE NOTED.
9. ALL DIMENSIONS ARE TO CENTERLINE UNLESS OTHERWISE NOTED.
10. ALL DIMENSIONS ARE TO CENTERLINE UNLESS OTHERWISE NOTED.
11. ALL DIMENSIONS ARE TO CENTERLINE UNLESS OTHERWISE NOTED.
12. ALL DIMENSIONS ARE TO CENTERLINE UNLESS OTHERWISE NOTED.
13. ALL DIMENSIONS ARE TO CENTERLINE UNLESS OTHERWISE NOTED.



## DISABILITY AND COMMUNICATION ACCESS BOARD

919 Ala Moana Boulevard, Room 101 • Honolulu, Hawaii 96814  
Ph. (808) 586-8121 (V/TDD) • Fax (808) 586-8129

### DOCUMENT REVIEW

October 08, 2009

### HONOAPIILANI HIGHWAY & NAPILHAU ST INTERSECTION IMPROVEMENTS

DCAB Job #: 2009-348  
Project #: na  
Department/Agency: State of Hawaii  
Department of Transportation  
Ferdinand Cajigal  
Design Firm: Ronald M. Fukumoto Engineering, Inc  
Mandy Quedding  
Documents Reviewed: HRS §103-50 Document Transmittal Form dated: September 22, 2009  
1 sheet of subject project received September 24, 2009  
Letter of Transmittal dated: September 22, 2009  
Previous Review(s): 9/21/09

As submitted, the documents reviewed appears to meet the Americans with Disabilities Act Accessibility Guidelines (ADAAG) as required by Hawaii Revised Statutes (HRS) 103-50.

The above constitutes review and recommendations on this project to determine whether or not the building or facility is designed in accordance with the ADAAG, per HRS 103-50. Final responsibility to comply with HRS 103-50 rests with the State or County agency overseeing the project.

*Note: The document review only addresses routes within the public right of way that are being designed as part of an alteration or new construction project to ensure pedestrian access is accessible to the maximum extent feasible. The review does not address road slopes.*

Reviewed by:

Gary L. Batcheller  
Facility Access Specialist II

Mandy Quedding  
Ronald M. Fukumoto Engineering, Inc