



Maui Family Support Services, Inc.

... because keiki matter!!!

January 29, 2014

Chief Executive Officer:

L. Jani Sheppard



Board of Directors:

President

Michael E. Kim, M.D.

Vice President

Grant E. Howe, CCIM

Secretary

James W. Geiger, Esq.

Treasurer

Steve E. Clark, M.D.

Members:

Williet "Poni" Medeiros

ShyAnn Pebria

Debi Rolwing

**Audit and Finance
Committee:**

Thomas Douma

Clyde Kono

Honorary Members:

Edy Salenger

Mamoru Yamasaki (deceased)

Liaison Members:

April Apana, R.N.

Shirley Chun-Ming, R.N.



Programs:

Early Head Start

- Center-Based
- Home-Based

Enhanced Healthy Start

Fatherhood Involvement Team (FIT)

Healthy Start

Lana 'i Family Support Services

Moloka 'i Family Support Services

Ohana Support Services

Raising Our Keiki's Keiki (ROKK)

Teen Voices - Pregnancy & Substance

Abuse Prevention & Parenting Support

Lana 'i WIC

Rod Becker

Senate Committee on Ways and Means

Hawaii State Capitol, Room 208

415 South Beretania Street

Honolulu, Hawaii 96813

Dear Mr. Becker,

Enclosed please find the Grant in Aid applications for CIP and Operating for Maui Family Support Services, Inc. On behalf of our Maui County community and the children and families we serve, I extend a warm mahalo for your time, review, and consideration. If you have any questions regarding our services or the attached funding application, please feel free to contact me directly at 242-0900, ext. 223.

Mahalo nui loa for your commitment to ensure a safety net for the most vulnerable members of our Maui County Community and for your service to all of Hawaii.

Respectfully,



L. Jani Sheppard

CC:

Senator Gilbert Keith-Agaran

Speaker Joseph Souki

Representative Justin Woodson

Senator Rosalyn Baker

Representative Angus McKelvey

Representative Kaniela Ing

Senator J. Kalani English

Representative Kyle Yamashita

Representative Mele Carroll

Representative Ty Cullen

1844 Wili Pa Loop, Wailuku, HI 96793 • Phone (808) 242-0900 • Fax (808) 249-2800

P.O. Box 1658, Kaunakakai, HI 96748 • Phone (808) 553-8114 • Fax (808) 553-8115

P.O. Box 631043, Lanai, HI 96763 • Phone (808) 565-7484 • Fax (808) 565-7484 *51

www.mfss.org • @mauifamilysupportservices

Maui
United Way



House District _____

Senate District _____

**THE TWENTY-SEVENTH LEGISLATURE
APPLICATION FOR GRANTS AND SUBSIDIES
CHAPTER 42F, HAWAII REVISED STATUTES**

Log No: _____

For Legislature's Use Only

Type of Grant or Subsidy Request:

GRANT REQUEST – OPERATING

GRANT REQUEST – CAPITAL

SUBSIDY REQUEST

"Grant" means an award of state funds by the legislature, by an appropriation to a specified recipient, to support the activities of the recipient and permit the community to benefit from those activities.

"Subsidy" means an award of state funds by the legislature, by an appropriation to a recipient specified in the appropriation, to reduce the costs incurred by the organization or individual in providing a service available to some or all members of the public.

"Recipient" means any organization or person receiving a grant or subsidy.

STATE DEPARTMENT OR AGENCY RELATED TO THIS REQUEST (LEAVE BLANK IF UNKNOWN): _____

STATE PROGRAM I.D. NO. (LEAVE BLANK IF UNKNOWN): _____

1. APPLICANT INFORMATION:

Legal Name of Requesting Organization or Individual:

MAUI FAMILY SUPPORT SERVICES, INC.

Db/a:

Street Address: 1844 Wili Pa Loop, Wailuku, HI 96793

Mailing Address:

2. CONTACT PERSON FOR MATTERS INVOLVING THIS APPLICATION:

Name JANI SHEPPARD

Title Chief Executive Officer

Phone # 808-242-0900 Ext 223

Fax # 808-249-2800

e-mail Jani@mfss.org

3. TYPE OF BUSINESS ENTITY:

- NON PROFIT CORPORATION
- FOR PROFIT CORPORATION
- LIMITED LIABILITY COMPANY
- SOLE PROPRIETORSHIP/INDIVIDUAL

6. DESCRIPTIVE TITLE OF APPLICANT'S REQUEST:

' CAPITAL INVESTMENT FOR THE EXPANSION OF EARLY CHILD DEVELOPMENT SERVICES AND COMMUNITY RESOURCES

4. FEDERAL TAX ID #: [REDACTED]

5. STATE TAX ID #: [REDACTED]

7. AMOUNT OF STATE FUNDS REQUESTED:

FISCAL YEAR 2015: \$1,200,000

8. STATUS OF SERVICE DESCRIBED IN THIS REQUEST:

- NEW SERVICE (PRESENTLY DOES NOT EXIST)
- EXISTING SERVICE (PRESENTLY IN OPERATION)

SPECIFY THE AMOUNT BY SOURCES OF FUNDS AVAILABLE AT THE TIME OF THIS REQUEST:

STATE \$0
 FEDERAL \$1.25 MIL
 COUNTY \$68,000
 PRIVATE/OTHER \$ PENDING

JANI SHEPPARD, CHIEF EXECUTIVE OFFICER
NAME & TITLE

1/29/2014
DATE SIGNED

Application for Grants and Subsidies

I. Background and Summary

1. Brief Description of the Applicant's Background

The Mission of MFSS is: "to promote healthy family functioning by providing supportive services which build on family strengths. The Prime Directive is to utilize our collective resources toward the prevention of child abuse and neglect". For fiscal year ending June 30, 2013, MFS served over 5500 individuals. In November 2013, MFSS celebrated 33 years of service to families with young children on the islands of Lana`i, Moloka`i, and Maui. MFSS is accredited by the National Council on Accreditation for Children and Families (COA) and received another 4 year expedited (highest level) accreditation acknowledging excellence in Program, Administrative & Finance operations. MFSS' A-133 Audit has had no findings or concerns in 4 years. The Board of Directors meets monthly to review financial and program activities and to conduct planning. MFSS provides a myriad of services to address co-occurring risk factors for child abuse and neglect (CAN).

The majority of families with whom MFSS works with experience low SES, including low income. MFSS conducts outreach to engage pregnant women and expectant fathers, as well as pregnant and parenting teens to engage them in services early to promote positive birth and child outcomes. MFSS provides strength-based, culturally and linguistically relevant, and participant-centered services to prevent child abuse and neglect by: 1) increasing Protective Factors and decreasing risk factors for CAN, 2) promoting maternal and child health including preconception health, 3) providing family strengthening services and 4) promoting optimal child development in the 5 domains and school readiness. MFSS has formal Memoranda of Agreement's and collaborations with our community partners to support a seamless system of care and support for children and families. We work to avoid duplication of services by partnering with other organizations via mutual referral, inclusion in the resources provided to participants, training for professional development, and knowledge of current resources and sharing of resources and information to better serve participants.

2. Goals and Objectives Related to the Request

MFSS is requesting CIP funds in the amount of \$2.1 million to support our \$3.6 million project. We are confident in our ability to secure the remainder of needed funds based on our past successful Capital Campaign for our current facilities and adjacent lot, our successful CDGB application and project, our successful capital projects that were federally funded by AARA, and other funding support.

Objectives:

1. Increase capacity to meet child abuse and neglect prevention and early childhood development need of low income families.
2. Generate Unrelated Business Income to fund mission-related services and decrease dependence on State funding.
3. Create opportunities for Profit/Not-for-Profit Partnerships

Goals:

1. Purchase the land (two contiguous lots) adjacent to Wailuku facility total of 28,091 sq.ft.
2. Build Two-Story Facility to:
 - a. House additional licensed MFSS Child Development Center classrooms for low income families with children 0-5 years old (to serve the underserved 0-3 year olds, and the gap groups of children ages 3-5 years old due to the elimination of Pre-Kindergarten and the change in birth month eligibility requirements.) These no-cost services are provided for families working or attending school, to promote family self-sufficiency.
 - b. Provide CAN prevention and early childhood services to gap group of high risk families with children 3-5 years old.
 - c. Increase capacity to provide underserved community of families involved in CWS at high risk for CAN.
 - d. To house a licensed commercial kitchen to decrease cost for children's meals and to generate Unrelated Business Income.
 - e. House office and conference space to lease to local small businesses in need affordable office and meeting space in Central Maui.
 - f. House training facility for Leadership and Organizational development and other professional development to generate Unrelated Business Income to support mission-related services.

The Public Purpose and Need To Be Served

Early Childhood Development Center-Based Care –

Based on the Department of Human Services Report in January 2013, there are 317 families with children 0-3 in Maui County who are receiving TANF, TONF or SSI and eligible for Early Head Start services. Of the 317 eligible families, 125 or 39.43% live in Central Maui (Kahului/ Wailuku/Puunene), 74 or 23.34% live on Molokai, 56 or 17.67% live in Upcountry (Haiku/Makawao/Paia/Pukalani/Kula), 33 or 10.42% live in South Maui (Kihei), 20 or 6.31% live in West Maui (Lahaina), 7 or 2.21% live on Lanai, and 2 or 0.63% live in East Maui (Hana). Based on our 2011-2012 Program Information Report (PIR), 78% of the 225 children and/or expectant mothers we served had income below the 100% Federal Poverty Guidelines, and 9% were receiving public assistance such as TANF or SSI.

PUBLIC NEED:

1. Compelling Community Financial Need/Impact:

Prevent child abuse and neglect and strengthen families in Maui County. According to a 2012 Center for Disease Control report on the cost of Child Abuse and Neglect (CAN), financial costs for CAN rival other major health and public health concerns:

ESTIMATED AVERAGE LIFETIME COST PER NONFATAL VICTIM:

- \$32,648 in childhood health care costs
- \$10,530 in adult medical costs
- \$144,360 in productivity losses
- \$7,728 in child welfare costs
- \$6,747 in criminal justice costs

- \$7,999 in special education costs

ESTIMATED AVERAGE LIFETIME COST PER CHILD DEATH INCLUDES:

- \$14,100 in medical costs
- **\$1,258,800** in productivity losses

2. Compelling Safety Net Needs:

With the elimination of Pre-Kindergarten and the new State age-eligibility for kindergarten, there now exists a gap group of children 3-5 years old for whom there are no early childhood/childcare services. In addition to the underserved children 0-3 years old, identified above, children 3-5 years old can stay at home or attend preschool. The latter is cost prohibited for low income families who do not qualify or receive the full cost through childcare subsidies. With the average cost of childcare on Maui in excess of \$1,000 per month per child for children 0-2 years old, and \$640 per month, per child for children 2-5 years old, families must weigh the cost and benefits, financial and otherwise, of working to pay for childcare in addition to attending school, vocational development or work. Due to the limited capacity, increased demand and expense of care for children 0-5 years old, *the public need* is increased affordable early childhood development and care options to ensure families are working to attain self-sufficiency and children enter school ready to learn.

Provide effective, evidenced-based, cost-effective services that promote optimal child health and development, strengthen families, and promote family self-sufficiency. As an integral community service affecting thousands of low income families, MFSS needs to expand our capacity to partner with the State of Hawai'i, County of Maui, and our community, to meet the critical safety net needs of our community and to ensure an affordable base of operations that also generates income to support our mission-related services. This capital project will allow for the development of an additional, much needed, Early Childhood Developmental Center to serve un-served/underserved income eligible families who meet Federal poverty guidelines with children 0-5 years of age. Office space will support expanded MFSS services and also be leased to members of the local business community to generate Unrelated Business Income.

3. Compelling Sustainability Need:

Members of the Small Business Community need affordable office space, below market value, to support the economic development in our community. Business community members who do not have adequate and/or affordable office space will lease a personal office and space within our building. Renting space in our building will include access to amenities such as Wi-Fi, conference room for meetings, trainings, presentations, and a physical address for their business, providing the opportunity to consolidate and lower the renter's business expenses. The co-location of MFSS services and business community members will create opportunities for Profit/Not-for-Profit partnership allowing support from the business community for CAN prevention and Early Childhood services to Maui County families. Members of the business community who lease office space and services from MFSS will know that their payments are directly impacting the lives of children and families in their community and helping to fund direct program services, without sacrificing professional office space and environment all while supporting services for their local communities. It is critical that MFSS maintains the capacity to respond to the pressing needs of the community's most vulnerable families.

In addition to the amenities described above, the lease will include a centralized Administrative Support position. Even though not the primary purpose or goal, it is an exceptional tangential opportunity to support workforce development in our community by providing this Administrative position. This Administrative

Support position will be filled by the Office of Unemployment Workforce Development Participants, interns, students from other vocational development programs such as Job Corps, and/or individuals needing to strengthen their employment/vocational skills. MFSS has worked in partnership with schools, vocational training, and workforce development programs and initiatives to provide rich and practical learning experiences for their students or participants. The Profit/Not-for-Profit business relationships have future and long term potential to provide opportunities for employment of the resulting trained administrative support staff. For example, a business member leasing office space (as well as their colleagues/clientele) are able to become familiar with this Centralized Administrative intern, witness and experience their abilities and skills, and have the opportunity to employ the Administrative Support interns long-term, within the local community. This employment platform is mutually beneficial for the local business members as well as the interns and workforce development, providing the foundation to build experience of entry level positions for high school and college students and participants of workforce development programs.

MFSS is mission-driven and we work consciously to ensure we do not have “mission drift”. Therefore, the business model and income generating opportunities for which we are requesting funding, are for one ultimate purpose: to ensure our ability to meet our mission “to promote healthy family functioning by providing supportive services which build on family strengths. The Prime Directive is to utilize our collective resources toward the prevention of child abuse and neglect.”

HRSA has designated Maui County as a Medically Underserved Population (MUP). Child abuse and neglect, prenatal care, early identification of confirmed or suspected developmental delays, nutrition, poor health, access to timely and affordable care/treatment, are among the challenges for families. Prior to the 2009 funding cuts, in 2008 MFSS programs included home visiting services for 504 children at high risk for child abuse and neglect. When this particular program was cut completely in 2009, MFSS used savings and applied for Foundation funding to maintain a small program and provided significant advocacy and education to ensure funding would be restored.

The following is one small example (home visiting services for high risk families) of the relationship between safety net need, capacity and funding:

	Children Served	Comments
FY 2008	504	Adequately funded
Jan – Aug 2009	390	First wave of cuts
Aug 2009 – June 2010	88	Funded via MFSS savings and foundation grants
FY 2010	50	Funded via MFSS savings and (1) foundation grant
FY 2011	48	Funded via MFSS savings and (1) foundation grant
FY 2012	28	Funded via MFSS savings and (1) foundation grant
FY 2013	73	Partial restoration of state funding
Effective 1/1/14	10	Elimination of funding with exception of Lana`i

Safety-Net Need Related to Co-Occurring Risk Factors For Child Abuse and Neglect

Poverty

According to the 2013 Report from the Hawaii Health Care Association the highest poverty rates in the county are found on the Island of Molokai, on the north shore of the Island of Maui, and among Native Hawaiian and Pacific Islander populations. The report further states, "Largely driven by economic insecurity, social issues such as unemployment, education, alcoholism, and domestic violence all influence a community's health." Low-income families are affected by challenging and stressful social factors that limit opportunities for economic self-sufficiency and advancement. Furthermore the resulting stress has a negative effect on individual family and community health. "Although Maui County compares well to other Hawaii counties in data indicators, the heavy impact that the social environment has on health makes this area a key priority in addressing community health. The 2010 DOH Hawaii Primary Care Needs assessment indicates 26.5% of Maui County residents fall below the 200% Federal Poverty Level and the County has the highest rate of uninsured adults.

Alcohol and Other Drug Use

Development and strengthening of coping and problem solving skills are protective factors for substance abuse and mental health concerns. This includes providing skills and resources, including treatment readiness and treatment services, to families with limited ability to cope with the antecedents and consequences of substance abuse and untreated mental illness in order to promote positive parenting and environments that support child wellness.

There are severely limited residential treatment slots available for individuals on QUEST or using ADAP funding. In Maui County in 2006-2010, the overall percent of hospital admissions that were associated with a substance related disorder was higher (11.9%) than any other County in Hawai'i and more than the state average of 8.9%. The hospitalizations related to substance disorders was particularly high in Lahaina (17.0%), Hana (14.2%), and Makawao (12.3%). Each of these areas is among the unserved census tracts discussed in this funding request.

Mental Health

Mental health services need to include case management, housing for adults with serious issues, and substance abuse treatment; both Maui and Molokai are federally designated mental health professional shortage areas.

Teen Pregnancy

Abused children are **25% more likely** to experience teen pregnancy. According to the 2011 National Campaign to Prevent Teen Pregnancy Report the cost of Teen births in Hawai'i was \$37.4mil/annually. Of the teens giving birth in 2011: 30% were 15-17 year old; 69% 18-19 year old; 31% was their first teen pregnancy; and 6% was a subsequent teen pregnancy.

Developmental Delay

School readiness and early learning opportunities for children are protective factors for overall child wellness. Evidence-based assessment and intervention for suspected or confirmed developmental (cognitive, social, physical, emotional, behavioral) delays are integral components of our prevention efforts. The proposed program works to build protective factors by providing assessments and referrals for suspected delays, providing parents with tools, activities, and resources to promote optimal child development.

Grandparents Raising Grandchildren

According to the US Census Bureau, it is estimated that 12,600 grandparents in Hawai'i are raising their grandchildren. The most common reasons include: grandparents are relative resource caregivers for

children who are in the Child Welfare system due to child abuse and neglect, the parent(s) are abusing alcohol or other drugs or are in treatment for substance abuse; and the parent(s) have mental health concerns.

Access to Health Care

Residents throughout Maui County experience transportation and availability of care challenges. On Lana'i, women must travel to Maui or Oahu to give birth. Maui is also designated as a dental health professional shortage area. Because many health services are based on Oahu, Maui County families have limited access to both primary and specialty care physicians. According to the 2009 Race and Ethnicity Health Care Brief, The Role of Health Coverage for Communities of Color by the Kaiser Foundation, 3.8 mil or 32% of Asian/Native Hawaii/Pacific Islanders "were publicly covered or uninsured." It is expected that Health Care Reform will positively affect the number of uninsured. The Hana Community Health Clinic on Maui reports, "... the rate for inadequate prenatal care is almost 42%, nearly twice the County and State averages" (Nativehawaiianhealth.net).

3. The Target Population To Be Served

The Target Population is

1. For Mission Related Services:

- pregnant women, expectant fathers, and families (including single parents, resource families and grandparents raising their grandchildren)* with children ages 0-8, in Maui County and;
- at high risk for Child Abuse and Neglect, and /or;
- income (below poverty level) and categorically eligible expectant mothers and families with children ages birth to 36 months, and;
- families with late-borns who are not eligible to enter kindergarten due to elimination of Pre-Kindergarten and the new State age-eligibility for kindergarten.
(*grandparents and fathers with children 0-18 can receive services)

2. For Profit/Not-for-Profit Partnership

- Members of the Small Business Community needing affordable office space to support the economic development in our community.
- Work Force Development for High School Students, College Students, Un/under-employed, individuals desiring vocational training.

4. Describe the geographic coverage

MFSS serves the islands of Maui, Moloka'i and Lana'i. We have determined it is most cost efficient to lease space on Moloka'i and Lana'i. Due to the actual square footage of space needed, co-location of services are utilized on Lana'i and In-Kind support for rent on Molokai. The infrastructure for all MFSS services is located on Maui. While the building for which we are requested funding is in Wailuku, services provided from the facility are for the benefit of children and families throughout Maui County.

II. Service Summary and Outcomes

1. The Scope of Work, Tasks and Responsibilities

Based on our pre-planning, it will take approximately 2 years from purchase of land to completion of facility. The first 12 months are divided as follows:

Phase 1: Months 1-9

The scope of work includes:

1. Purchase of Land
2. Bidding process: MFSS will solicit bids for planning and design – application will include service in securing mechanical and electrical engineering needs
3. Select winning Architectural Company
4. Approve Design
5. Bidding and Permitting: Solicit General Construction, sub-contractors bids for construction of building - service to include securing all necessary permits and documentations

Phase 2: Months 9-12

6. Begin construction

2. Projected Annual Timeline for Accomplishing the Results or Outcomes of the Service

Quarter 1(July 1, 2014 – September 30, 2014):

Completion of Land Purchase, Bidding Process for Architectural Company for planning and design including securing mechanical and electrical engineering, Selection of Architectural Company

Quarter 2 (October 1, 2014 – December 31, 2014):

Collaborate with selected Architectural Design Company to approve design,

Quarter 3 (January 1, 2015 – March 31, 2015):

Solicitation of bid proposals from General Contractors, Sub-Contractors, Selection of General and Subcontractors, Completion of permitting and any necessary documentation; Completion of Phase 1.

Quarter 4 (April 1, 2015 – June 30, 2015):

Begin Phase 2: Construction

In *all quarters*, apply for available and applicable Federal, State, County, Foundation Funding and In-Kind Services.

3. Quality Assurance and Evaluation Plans for the Request

MFSS has a 'Capital Campaign' committee that meets as necessary as and no less than once per month to discuss the progress and ensure outcomes are on schedule. Discussion includes identifying potential capital funders, progress of Project Plan, bid review and selection, and continuous input and review.

We conduct ongoing Performance and Quality Improvement (PQI) activities to regularly monitor program outcomes and make adjustments as needed. MFSS will continue fundraising and applications for Foundation funding. MFSS was able to commit funding for a Resource Development position through June 30, 2014. Our GIA request includes funding to continue this position, whose primary function is to identify and secure funding for MFSS services.

MFSS is dedicated to providing high quality, best practice services, and is accountable to those entities which fund these services. MFSS meets or exceeds program requirements, has an excellent track record for delivering outcomes, and works to complete projects in the time stated. MFSS closely monitors projects: When we anticipate that circumstances beyond our control will affect our timeline, we make adjustments and communicate with our funders.

MFSS has a Performance and Quality Assurance Coordinator (PQAC), who serves as the Coordinator of the PQI Committee. MFSS places significant efforts and resources into its PQI activities. A strength-based approach is used with staff in supervision. The PQI activities are also strength-based. MFSS adopts the Council on Accreditation's approach to excellence, which sees that a broad-based, agency wide quality improvement process, including all staff and stakeholders, is a vital and essential management tool.

PQI is a part of each employee's job description, orientation, and performance evaluation. The PQAC, with support from the Executive Leadership Team, is vested with the coordination of the PQI activities. PQI is also a part of team and monthly staff meetings.

4. Measures of Effectiveness That Will Be Reported to the State Agency Through Which Grant Funds are Appropriated

- Purchase of Land
- Completion of Phase 1 on or before March 31, 2015
- Initiation of Phase 2 on or before April 1, 2015
- Apply for and secure remaining funding balance:
 - Complete application for Cooke Foundation Limited by deadline date: 9/2/2014
 - Complete application for Atherton Foundation by deadline date: 10/1/2014
 - Complete application for Weinberg Foundation by end of Phase 1
 - Complete application for Bank of Hawaii by end of Phase 1
 - Complete application for Alexander & Baldwin Foundation by end of Phase 1
 - Complete Application for Friends of Hawaii's grant by deadline date: 1/31/2015
 - Complete application for Graham Family Foundation by end of Phase 1
 - Complete application for Fred Baldwin Foundation by deadline date: 8/1/2014

III. Financial

Budget

1. The applicant shall submit a budget utilizing the enclosed budget forms as applicable, to detail the cost of the request.

Please see attached.

2. Anticipated Quarterly Funding Requests for the Fiscal Year 2015.

Quarter 1	Quarter 2	Quarter 3	Quarter 4	Total Grant
\$900,000	\$264,170	\$264, 170	\$671,660	2,100,000

3. Listing of All Other Sources of Funding that We Are Pursuing for Fiscal Year 2015.

- Maternal Infant Early Childhood Home Visiting (MIECHV) and other Federal Funding
- Office of Hawaiian Affairs
- Community Development Block Grant
- Grants specific to 'Green' and Environmental Sustainability
- Alexander & Baldwin Foundation
- Atherton Family Foundation
- Bank of Hawaii
- Cooke Foundation
- Fred Baldwin Memorial Foundation
- Friends of Hawaii
- Graham Family Foundation
- Harry & Jeanette Weinberg Foundation
- Harold K.L. Castle Foundation
- McInerny Foundation
- Bank of Hawaii

4. Listing of All State and Federal Tax Credits Granted Within the Prior Three Years
No tax credits provided in the past three years.

5. The applicant shall provide the balance of its unrestricted current assets as of December 31, 2013.

Please see attached.

IV. Experience and Capability

A. Necessary Skills and Experience

The major precipitating factors of child maltreatment include an inability to cope with parenting problems and life stressors, such as inadequacies in income and housing, substance abuse, mental health issues, especially maternal depression, and Intimate Partner Abuse (IPA). Other risk indicators include low birth weight, teen pregnancy, tobacco use in the home, children with confirmed or suspected developmental delay, and low school achievement. These are all areas of comprehensive screening, early identification, and referral in which MFSS has demonstrated competency. Early identification, both pre and post natal, of families eligible for services is crucial to the protection. In addition to our 33 year history of providing services to Maui County families, MFSS also has a successful track record for capital campaign, building and renovations to expand services, and completing capital projects in a timely and efficient manner.

Verifiable Capital Project Experience:

- MFSS conducted a successful Capital Campaign to purchase three lots which comprise the current Wailuku Facility and developmental playscape
- In 2010 MFSS submitted a successful Community Development Block Grant application to install a photovoltaic system (significantly decreasing our electric bill)
- In 2010 MFSS applied for and received Federal funding from the American Reinvestment and Recovery Act (ARRA) to build two (2) new Infant/Toddler classrooms, an outdoor developmental playscape at our Child Development Center in the Lahaina Homeless Resource Center, Ka Hale A Ka Ola, and to add an additional classroom, bathrooms, changing areas, and laundry facilities to the existing Lahaina Center.

This CIP funding request is to replicate the building of the current MFSS Licensed Infant/Toddler Development Centers as well as the successful Capital Campaign to expand services and increase our capacity to meet our community's safety net needs. For each of the above listed projects, the agency worked with an Architectural firm for design, planning and consultation/construction services. For our 2002 Capital Campaign, MFSS leveraged funding from Foundations and the business community.

Contributors Included:

Alexander & Baldwin Foundation
Atherton Family Foundation
Bank of Hawaii
Banky LaRocque Foundation
Cooke Foundation
Fred Baldwin Memorial Foundation
Friends of Hawaii CAC
Graham Family Foundation
Harry & Jeanette Weinberg Foundation
Hyman & Marjorie Weinberg Foundation
Harold K.L. Castle Foundation
Kosasa Foundation

McInerney Foundation
Bank of Hawaii
Samuel & Mary Castle Foundation
Starr Foundation
Strong Foundation

Verifiable Service Experience

Early Head Start (EHS), continuous service since 1998 (Laura Candeloro, Program Specialist, Office of Head Start) laura.candeloro@acf.hhs.gov; (415) 437-8563 – Maintains enrollment of 134 families with children 0-3yrs old. In addition to EHS Home Visiting services throughout the County, MFSS provides two (2) licensed EHS Child Development Centers with services at no charge to income and categorically eligible families working or attending school. The evidenced based, federally-funded program serves low income prenatal women and families with children up to three years of age on Maui, Lana`i and Moloka`i and includes specialist services in the areas of maternal and child health, education, disabilities, fatherhood, child and adult mental health and child development.

Early Identification (EID) Team, continuous service since 1983 (N. Tod Robertson, Statewide Home Visiting Network Coordinator, Maternal and Child Health Branch, Department of Health) nickey.robertson@doh.hawaii.gov; (808) 733-9041 – services provided 360 days/yr. The hospital-based component provides face-to-face screening and assessment interview to families with newborns (or by phone/home visit if the participant is not available at the hospital) to assess for CAN risk factors and determine eligibility for MFSS services. Prenatal participants are admitted to services through outreach to WIC offices and other prenatal providers, as well as medical, community and self-referrals, informational packets, resource list(ing)s and community referrals to all families with newborns. Effective 1/1/14, EID is not funded for Lana`i or Moloka`i and several Census tracts on Maui.

Healthy Start Home Visiting, 1988 – December 2013 on Maui, 1994 – 2012 on Lana`i, and 2005 – 2012 on Moloka`i (N. Tod Robertson, Statewide Home Visiting Network Coordinator, Maternal and Child Health Branch, Department of Health) nickey.robertson@doh.hawaii.gov; (808) 733-9041 – Provides services to high risk families with children 0-3 years of age before, and to avoid involvement with, the Child Welfare System. The program provides home visiting services to prevent child abuse and neglect by enhancing family functioning, addressing high risk factors for CAN, and increasing Protective Factors; teaching problem solving skills and improving family support systems; promoting healthy child development and positive birth outcomes; promoting positive Parent-Child Interaction (PCI) including bonding and attachment. Effective January 2014, the service is only funded for Lana`i.

Enhanced Healthy Start, continuous operation since 2005 (Christine Gamboa, POS Program Specialist, Department of Human Services, Social Services Division) cgamboa@dhs.hawaii.gov; (808) 586-5687 – Provides home-visiting services for families already involved with Child Welfare Services (CWS) for CAN. The team consists of a Mental Health/Substance Abuse Specialist, a Registered Nurse focused on maternal and child health and child development, and Home Visitors. Intimate Partner Abuse (IPA), substance abuse and mental health issues are predominant elements with over 90% of these families.

Lana'i Women, Infants and Children (WIC), continuous operation since 2011 (Iris Takahashi, Clinic Operations Supervisor WIC Service Branch) Iris.takahashi@wic.org; (808) 586-8080 – MFSS provides WIC services on the island of Lana'i to 150 low income pregnant, breastfeeding and non-breastfeeding post-partum women, infants and children up to five years of age to prevent and address low-birth weight and poverty, and prevent infant mortality. Special food packages are provided for homeless pregnant women, mothers, and infants.

Tobacco Cessation, continuous since 2011 (Roella Foronda, Program Associate, Hawai'i Community Foundation) rforonda@hcf-hawaii.org – This program addresses the risk factor of tobacco use as it relates to infant mortality, maternal and infant health including child asthma and respiratory illness, and low birth weight, particularly for prenatal families. The program provides screening, cessation information, Brief Intervention counseling, and healthy life style support groups. Information is also provided to all families giving birth at Maui Memorial Medical Center. MFSS provides the Not On Tobacco (N.O.T) © Curriculum to high school students.

USDA, continuous since 2004 (Shayne Kitano, Shayne.Kitano/OHCNP/HIDOE@notes.k12.hi.us and/or Eleanore Fong-Severance, Eleanore.Fong-Severance/OHCNP/HIDOE@notes.k12.hi.us Program Specialist (808) 587-3600) – MFSS receives USDA funds to provide meals to the children participating in our EHS Child Development Centers. Our USDA food service began in August 2004. MFSS is in full compliance with all service, financial, and reporting requirements. This program addresses risk indicators of poverty.

Teen Voices, continuous since 1998 (Nora Kawasaki) nora.kawasaki@notes.k12.hi.us – Provides support groups for pregnant and parenting teens as well as extensive outreach to help prevent teen pregnancies. The program uses evidenced-based Life Skills © curriculum in the intermediate and high schools on Maui and Lana'i. Services were also provided on Moloka'i until the 2012 funding reduction.

Connect for Success since 2013 (Roelle Foronda, rforonda@hcf-hawaii.org) – Provides dropout prevention services to 90 intermediate school students identified via the Hawai'i Early Warning System (HEWS) as very high risk for dropping out of school. Provides a 3 part program: classroom evidenced-based Success Highways Curriculum ©, after- school programming for youth and their parents, and home visits. Contracted through 2016.

Fatherhood Involvement Team (FIT), continuous since 2005 (Jud Cunningham, CEO, Aloha House) Judc@aloha.net; (808) 579-8414 – FIT targets prenatal/expectant fathers, teen dads, fathers with children under the age of eight, promotes positive and regular father involvement to lessen the potential for CAN, increasing Protective Factors, and promotes optimal child development (social, emotional, cognitive, physical, psychological and school readiness/achievement). Provides multiple weekly groups, home visits and individual services, focused on the importance of regular, positive father involvement, and responsible parenting. Facilitators provide father-specific education and support using evidenced-based 24-7 Dad © Curriculum as well as other curricula. Coordinator is a member of the State Commission on Fatherhood and Trainer for the Inside-Outside © curriculum for fathers scheduled for release from prison, the 24-7 Dad© and "the 7 Habits of the Highly Effective Father © curricula". MFSS is currently working with University of Hawai'i on a research related to 24-7 Dad.

Good Beginnings, continuous since 2000 (Kaina Bonacorsi, Maui County Early Childhood Resource Coordinator) Kaina.Bonacorsi@co.maui.hi.us; (808) 270-5557 – Provides childcare subsidy and works in partnership with the Maui County Early Childhood Resource Coordinator to support families with children 0-8 years of age.

Raising Our Keiki's Keiki (ROKK), continuous since 2006 (Jan Shishido, Deputy Director, DHHS) janice.shishido@co.maui.hi.us; (808) 270-7805 – Provides support and information groups for grandparents raising their grandchildren. The group includes the evidenced-based curriculum, Guiding Good Choices®, to help grandparents provide nurturing parenting skills, promote positive child development and health outcomes, and prevent alcohol and other drug use by their grandchildren to break the cycle of risk factors for CAN and poor child health outcomes.

B. Facilities

MFSS' main office is located in Central Maui on one of the few bus lines. The Agency occupies both floors of the 9,240 square foot building with The Kupukupu Early Head Start Child Development Center and classrooms, Early Head Start Content Area Specialists, Administrative Support, and conference rooms (on the first floor), Home Visitors for Healthy Start, Enhanced Healthy Start, and Early Head Start, EID, EHS and Healthy Start Clinical and Home Visiting Supervisors, ROKK, and Administration (on the second floor). The main Wailuku facility including the parking lots and child development playscapes meet ADA requirements. The 2nd Early Head Start Child Development Center is located within the Ka Hale A Ke Ola, Homeless Resource Center. The MFSS Center and playscape there are also ADA accessible and compliant.

The MFSS Lana'i and Moloka'i offices are each centrally located in their communities and meet ADA requirements. The DOO, DECES/EHS, and Home Visiting Supervisors visit MFSS facilities on Moloka'i and Lana'i regularly for supervision, training, and support. Observations and completion of safety and compliance reviews help to ensure ADA and other compliance. MFSS also has TDD/TDY equipment to ensure access to services for the hearing impaired. In addition, ADA compliant public facilities such as community centers, church halls, and parks are used for program and group activities. We have included on our liability policy, the most frequently used community facilities as "additionally insured" and increased liability insurance in July 2010 to meet new state contracting requirements. Emergency procedures also address evacuation of persons with physical/mental limitations.

The WIC Clinic on Lana'i is located in the County Cottage and is ADA accessible, including ramps for wheelchair access onto the lanai waiting area. There are also toys and games to occupy children when families are waiting.

The Lana'i facility is ADA compliant. It is located with the majority of the human and social service providers on Lana'i and is within yards of the health clinic and within two blocks of the MFSS WIC clinic.

Private areas such as conference rooms and offices with doors are available for private meetings with families. Families sometimes choose to meet outside so their children can play in the developmental playscape. The location of the meetings allow for privacy and confidentiality.

The Wailuku and Lahaina facilities where the EHS infant/toddler classrooms are located are only accessible with a key card and the building has 24-hour camera surveillance. The teachers and reception staff can view visitors on monitors before letting them in the building.

V. Personnel: Project Organization and Staffing

A. Proposed Staffing, Staff Qualifications, Supervision and Training

- MFSS Project Liaison (MFSS Director of Operations)
- Resource Development Associate (Specifically Dedicated to Capital Campaign)
- Director of Early Childhood Education and Services to oversee the Child Development Center construction, including the playscape, to ensure Federal and State requirements are being met
- Contracted services with a competent and qualified Architectural Design and Plan company, with knowledge of environmentally sustainable building facilities
- Services with competent and qualified Building Contractors

B. Organization Chart

Please see attached Organizational chart.

C. Compensation

Chief Executive Officer - \$86,791.53

Director of Early Head Start and Early Childhood Education and Services \$64,870.22

Resource and Program Development Director - \$60,000

VI. Other

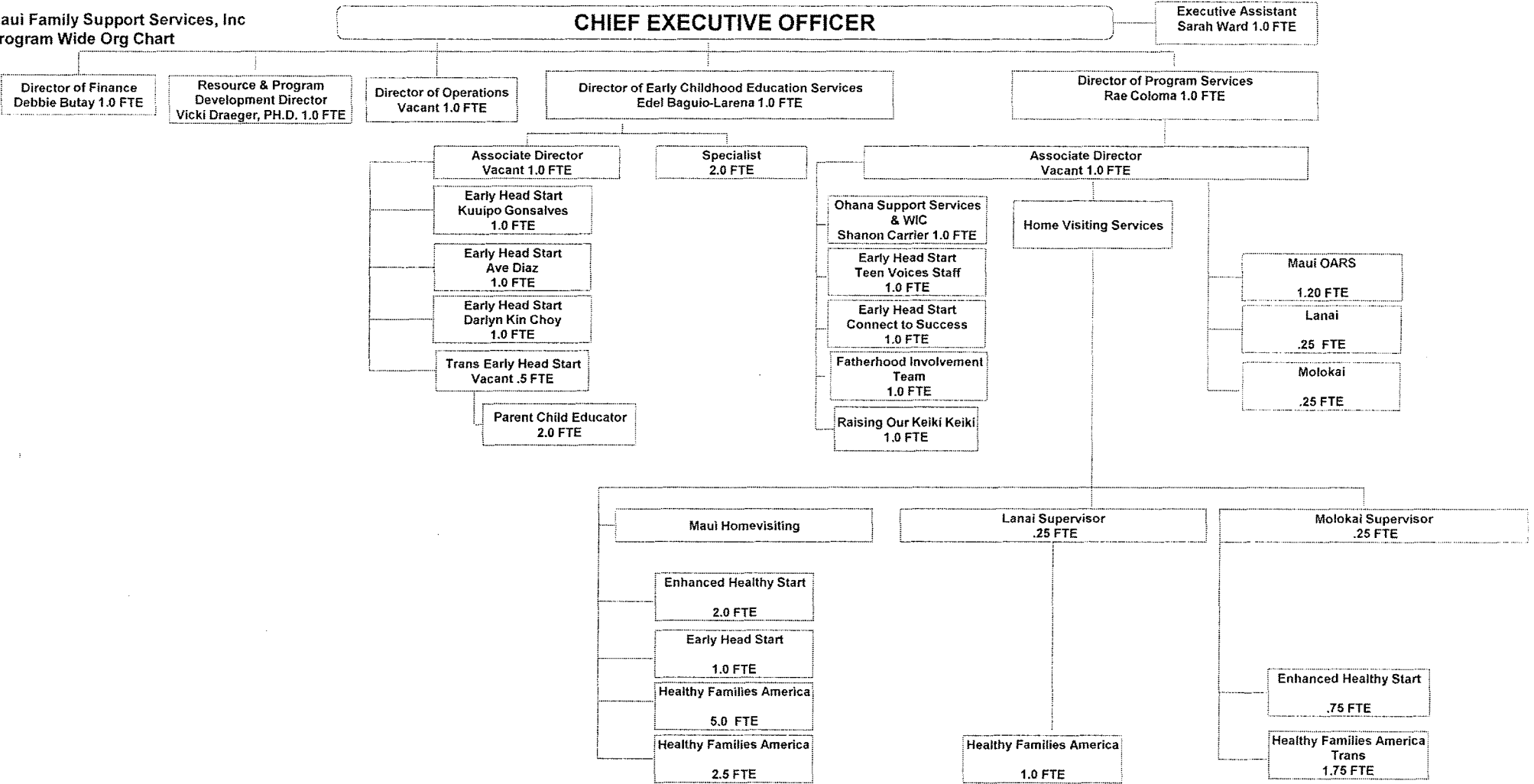
A. Litigation

Maui Family Support Services, Inc. does not have pending litigation to which we are a party nor any outstanding judgments.

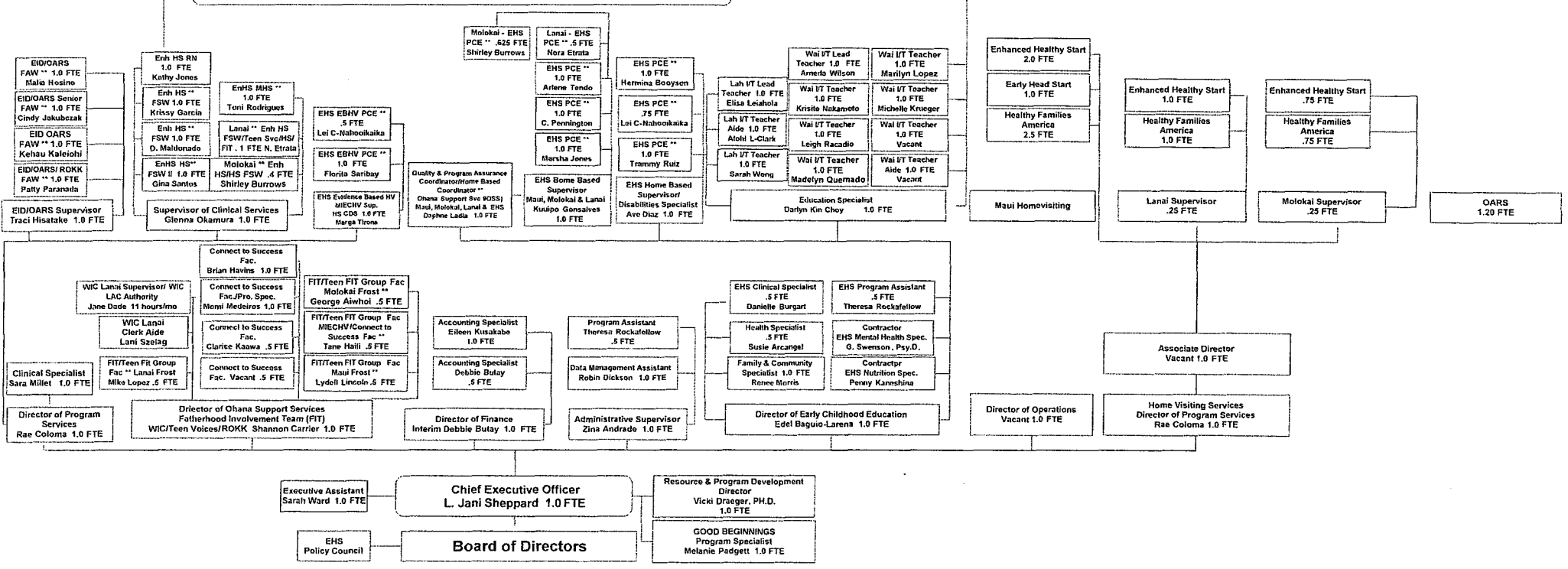
B. Licensure or Accreditation

MFSS is accredited by the National Council on Accreditation for children and families. MFSS has received expedited (highest level) accreditation for the past 8 years. Each of the child development centers are licensed by the Hawaii Department of Human Services. MFSS is adding a new accreditation for Healthy Families America and the site visit is scheduled for spring 2014.

Maui Family Support Services, Inc
Program Wide Org Chart



PARTICIPANTS



Executive Assistant
Sarah Ward 1.0 FTE

Chief Executive Officer
L. Jani Sheppard 1.0 FTE

Resource & Program Development Director
Vicki Draeger, PH.D. 1.0 FTE

GOOD BEGINNINGS Program Specialist
Melanie Padgett 1.0 FTE

Board of Directors

EHS Policy Council

BUDGET REQUEST BY SOURCE OF FUNDS

(Period: July 1, 2014 to June 30, 2015)

Applicant: Maui Family Support Services, Inc.

BUDGET CATEGORIES	Total State Funds Requested (a)	(b)	(c)	(d)
A. PERSONNEL COST				
1. Salaries	0			
2. Payroll Taxes & Assessments	0			
3. Fringe Benefits	0			
TOTAL PERSONNEL COST	0			
B. OTHER CURRENT EXPENSES				
1. Airfare, Inter-Island	0			
2. Insurance	0			
3. Lease/Rental of Equipment	0			
4. Lease/Rental of Space	0			
5. Staff Training	0			
6. Supplies	0			
7. Telecommunication	0			
8. Utilities	0			
9				
10				
11				
12				
13				
14				
15				
16				
17				
18				
19				
20				
TOTAL OTHER CURRENT EXPENSES	0			
C. EQUIPMENT PURCHASES	0			
D. MOTOR VEHICLE PURCHASES	0			
E. CAPITAL	2,100,000			
TOTAL (A+B+C+D+E)	2,100,000			
SOURCES OF FUNDING		Budget Prepared By:		
(a) Total State Funds Requested	2,100,000	Debbie Butay 808-242-0900		
(b) Other Funding Source	1,558,731	[REDACTED]		
(c)				
(d)				
TOTAL BUDGET	3,658,731	L. Jani Sheppard, CEO Name and Title (Please type or print)		

**BUDGET JUSTIFICATION
PERSONNEL - SALARIES AND WAGES**

Applicant: Maui Family Support Services, Inc.

Period: July 1, 2014 to June 30, 2015

POSITION TITLE	FULL TIME EQUIVALENT	ANNUAL SALARY A	% OF TIME ALLOCATED TO GRANT REQUEST B	TOTAL STATE FUNDS REQUESTED (A x B)
N/A				\$ -
				\$ -
				\$ -
				\$ -
				\$ -
				\$ -
				\$ -
				\$ -
				\$ -
				\$ -
				\$ -
				\$ -
				\$ -
				\$ -
				\$ -
				\$ -
				\$ -
				\$ -
				\$ -
				\$ -
				\$ -
				\$ -
				\$ -
				\$ -
TOTAL:				
JUSTIFICATION/COMMENTS: N/A				

BUDGET JUSTIFICATION - EQUIPMENT AND MOTOR VEHICLES

Applicant: Maui Family Support Services, Inc. Period: July 1, 2014 to June 30, 2015

DESCRIPTION EQUIPMENT	NO. OF ITEMS	COST PER ITEM	TOTAL COST	TOTAL BUDGETED
N/A			\$ -	
			\$ -	
			\$ -	
			\$ -	
			\$ -	
TOTAL:			\$ -	
JUSTIFICATION/COMMENTS:				

DESCRIPTION OF MOTOR VEHICLE	NO. OF VEHICLES	COST PER VEHICLE	TOTAL COST	TOTAL BUDGETED
N/A			\$ -	
			\$ -	
			\$ -	
			\$ -	
			\$ -	
TOTAL:			\$ -	
JUSTIFICATION/COMMENTS:				
N/A				

**BUDGET JUSTIFICATION
CAPITAL PROJECT DETAILS**

Applicant: Maui Family Support Services, Inc.

Period: July 1, 2014 to June 30, 2015

FUNDING AMOUNT REQUESTED						
TOTAL PROJECT COST	ALL SOURCES OF FUNDS RECEIVED IN PRIOR YEARS		STATE FUNDS REQUESTED	OF FUNDS REQUESTED	FUNDING REQUIRED IN SUCCEEDING YEARS	
	FY: 2012-2013	FY: 2013-2014	FY:2014-2015	FY:2014-2015	FY:2015-2016	FY:2016-2017
PLANS			288984			
LAND ACQUISITION			900000	100000		
DESIGN			239356			
CONSTRUCTION			671660	335830	1007490	
EQUIPMENT					115411	
TOTAL:			2,100,000	435,830	1,122,901	

3658731

JUSTIFICATION/COMMENTS:

MFSS will continue to submit grant applications to Hawaii-based Foundations and Trust, as well as Federal grants, until it raises its total campaign goal.

Maui Family Support Services, Inc.

Unrestricted Current Assets as of December 31, 2013

Maui County Federal Credit Union – CD	\$250,000.00
Maui County Federal Credit Union – Savings	\$5,194.26
State Farm Money Market	\$255,480.59
Bank of Hawaii – Savings	\$45,073.21

**DECLARATION STATEMENT OF
APPLICANTS FOR GRANTS AND SUBSIDIES PURSUANT TO
CHAPTER 42F, HAWAII REVISIED STATUTES**

The undersigned authorized representative of the applicant certifies the following:

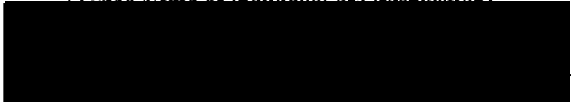
- 1) The applicant meets and will comply with all of the following standards for the award of grants and subsidies pursuant to Section 42F-103, Hawaii Revised Statutes:
 - a) Is licensed or accredited, in accordance with federal, state, or county statutes, rules, or ordinances, to conduct the activities or provide the services for which a grant or subsidy is awarded;
 - b) Complies with all applicable federal and state laws prohibiting discrimination against any person on the basis of race, color, national origin, religion, creed, sex, age, sexual orientation, or disability;
 - c) Agrees not to use state funds for entertainment or lobbying activities; and
 - d) Allows the state agency to which funds for the grant or subsidy were appropriated for expenditure, legislative committees and their staff, and the auditor full access to their records, reports, files, and other related documents and information for purposes of monitoring, measuring the effectiveness, and ensuring the proper expenditure of the grant or subsidy.
- 2) The applicant meets the following requirements pursuant to Section 42F-103, Hawaii Revised Statutes:
 - a) Is incorporated under the laws of the State; and
 - b) Has bylaws or policies that describe the manner in which the activities or services for which a grant or subsidy is awarded shall be conducted or provided.
- 3) If the applicant is a non-profit organization, it meets the following requirements pursuant to Section 42F-103, Hawaii Revised Statutes:
 - a) Is determined and designated to be a non-profit organization by the Internal Revenue Service; and
 - b) Has a governing board whose members have no material conflict of interest and serve without compensation.

Pursuant to Section 42F-103, Hawaii Revised Statutes, for grants or subsidies used for the acquisition of land, when the organization discontinues the activities or services on the land acquired for which the grant or subsidy was awarded and disposes of the land in fee simple or by lease, the organization shall negotiate with the expending agency for a lump sum or installment repayment to the State of the amount of the grant or subsidy used for the acquisition of the land.

Further, the undersigned authorized representative certifies that this statement is true and correct to the best of the applicant's knowledge.

Maui Family Support Services, Inc.

(Typed Name of Individual or Organization)



1/30/14

(Date)

L. Jani Sheppard, Chief Executive Officer

(Typed Name)

(Title)