

House District 7

Senate District 4

**THE TWENTY-SEVENTH LEGISLATURE  
APPLICATION FOR GRANTS AND SUBSIDIES  
CHAPTER 42F, HAWAII REVISED STATUTES**

Log No:

For Legislature's Use Only

Type of Grant or Subsidy Request:

GRANT REQUEST – OPERATING

GRANT REQUEST – CAPITAL

SUBSIDY REQUEST

"Grant" means an award of state funds by the legislature, by an appropriation to a specified recipient, to support the activities of the recipient and permit the community to benefit from those activities.

"Subsidy" means an award of state funds by the legislature, by an appropriation to a recipient specified in the appropriation, to reduce the costs incurred by the organization or individual in providing a service available to some or all members of the public.

"Recipient" means any organization or person receiving a grant or subsidy.

STATE DEPARTMENT OR AGENCY RELATED TO THIS REQUEST (LEAVE BLANK IF UNKNOWN): \_\_\_\_\_

STATE PROGRAM I.D. NO. (LEAVE BLANK IF UNKNOWN): \_\_\_\_\_

**1. APPLICANT INFORMATION:**

Legal Name of Requesting Organization or Individual:  
Hawaii Wildfire Management Organization

Dbas: n/a

Street Address:  
65-1279 Kawaihae Rd. Ste 211  
Kamuela, HI 96743

Mailing Address: same as above

**2. CONTACT PERSON FOR MATTERS INVOLVING THIS APPLICATION:**

Name ELIZABETH PICKETT

Title Executive Director

Phone # 808-885-0900

Fax # n/a

e-mail Elizabeth@hawaiiwildfire.org

**3. TYPE OF BUSINESS ENTITY:**

- NON PROFIT CORPORATION
- FOR PROFIT CORPORATION
- LIMITED LIABILITY COMPANY
- SOLE PROPRIETORSHIP/INDIVIDUAL

**6. DESCRIPTIVE TITLE OF APPLICANT'S REQUEST:**

OPERATIONAL FUNDS TO SUPPORT WILDFIRE PREVENTION ACTIVITIES AND HAZARD REDUCTION MEASURES IN HIGH-RISK FIRE-PRONE COMMUNITIES AND SENSITIVE NATURAL RESOURCE AREAS STATEWIDE.

4. FEDERAL TAX ID #: [REDACTED]

5. STATE TAX ID #: [REDACTED]

**7. AMOUNT OF STATE FUNDS REQUESTED:**

FISCAL YEAR 2015: \$ 188,000

**8. STATUS OF SERVICE DESCRIBED IN THIS REQUEST:**

- NEW SERVICE (PRESENTLY DOES NOT EXIST)
- EXISTING SERVICE (PRESENTLY IN OPERATION)

SPECIFY THE AMOUNT BY SOURCES OF FUNDS AVAILABLE AT THE TIME OF THIS REQUEST:

STATE \$ 0  
 FEDERAL \$ 150,000  
 COUNTY \$ 0  
 PRIVATE/OTHER \$ \_\_\_\_\_

TYPE NAME & TITLE OF AUTHORIZED REPRESENTATIVE:

[REDACTED SIGNATURE]

ELIZABETH PICKETT, EXECUTIVE DIRECTOR

JAN 31, 2014

AUTHORIZED SIGNATURE

NAME & TITLE

DATE SIGNED

## **Application for Grants and Subsidies**

### **I. Background and Summary**

#### **1. A brief description of the applicant's background**

Hawaii Wildfire Management Organization (HWMO) is a 501(c)(3) non-profit organization dedicated to protecting communities and natural resources across the state of Hawaii from the devastating impacts of wildfire. HWMO was founded in 2002 by a diverse group of stakeholders including scientists, ranchers, land managers, representatives of state and federal agencies, fire fighters, and environmentalists who came together to characterize wildfire threats and develop strategies to mitigate those threats. HWMO is the only organization of its kind in the state and operates with a passion for innovation and through extensive collaboration with government agencies, community associations, and natural resource management entities. Cumulatively, its diverse Board of Directors, Technical Advisory Committee, agency partners, and staff offer the best wildfire mitigation expertise in Hawaii. Through the implementation of projects such as installing helicopter diptanks, increasing firefighting access around communities, providing K-12 wildfire prevention assemblies and community workshops, and developing community-based wildfire protection plans, HWMO's work has saved lives and homes, safeguarded numerous subdivisions, enhanced firefighting, and protected some of the last remaining native dryland forests from wildfire.

#### **2. The goals and objectives related to the request**

Leeward areas across the state are at high risk of wildfire due to unmitigated fire fuels (flammable vegetation), limited community engagement in the wildfire issue, and under-addressed pre- and post-fire planning and preparedness. In line with its mission to protect communities and natural resources across Hawaii from wildfire through planning, hazard reduction, and community outreach, HWMO is requesting operational support in order to continue and expand our efforts to: 1) Enhance wildfire suppression capabilities, 2) Increase community participation in wildfire preparedness and vegetation management, and 3) Protect and restore natural resources from the wide-ranging impacts of wildfire. As with all of our projects, this work will be completed in cooperation with private landowners and homeowners, County, State, and Federal fire suppression personnel, and natural resource management partners.

#### **3. The public purpose and need to be served**

Over the last two years, HWMO and its partner Pacific Fire Exchange (PFX) conducted a thorough analysis of statewide firefighting records, which revealed that a greater percentage of Hawaii's land area burns or is under high risk of wildfire than the 16 western-most US states. Wildfires are increasing in frequency, size, and severity on all islands, threatening communities, agricultural lands and natural resources, yet wildfire is off the radar screen for many (in and out of the state) because until now we weren't able to completely articulate the scope of the issue or its impacts. Each year over the past decade (2002-2011), 932 wildfires burned 17,500 acres per year on average statewide. Drivers include expanding nonnative grasslands (18% of state land cover), increasing drought, abundant human-caused ignitions, and year-round fire-promoting weather.

Wildfires affect natural resources from mauka to makai and cause numerous municipal challenges. Wildfires destroy native forests (threatening native species and their habitats), change soil (and thereby vegetation patterns), cause erosion, fill streams with sediment (impacting water flow and stream plants and animals), decrease groundwater recharge (affecting drinking water supplies), damage nearshore resources (fishponds, coral reefs, fisheries), cause flooding, create traffic and road closures, degrade air quality (smoke and post-fire dust), threaten lives, homes, and communities, and are expensive to suppress (and costs are going up, even as funding remains the same). Prevention, pre-fire planning, and hazard reduction efforts are much more cost-effective than suppression or recovery, and these proactive measures decrease the size, frequency, and severity of wildfires that do occur.

HWMO was founded because agencies throughout Hawaii have limited capacity to prevent wildfires, reduce hazards, and restore impacted areas (basically, the non-firefighting aspects of managing wildfire threat and long-term effects). Wildfire impacts and suppression costs are increasing while resources for wildfire prevention, hazard reduction, and research remain unchanged and insufficient. To fill in the gaps and aid our County and State wildfire suppression agencies' efforts, HWMO has been raising funds and implementing collaborative projects to address many of the wildfire challenges listed above. The funds requested here will allow these efforts to continue and expand into additional fire prone areas statewide. These projects provide a substantial public service that not only assists the government agencies and other entities with whom we work, but also protects human lives, property, and the natural environment.

**4. Describe the target population to be served**

The populations to be served by this effort are those who live and work in high-risk fire-prone communities throughout the state. These areas include a diversity of demographics and types of infrastructure that will be the focus of protection, including residential subdivisions, resorts, businesses, utilities, historical sites, parks, threatened and endangered species, and protected areas. Local residents will be served by this effort, as well as visitors who are impacted by wildfire due to traffic, road closures, and environmental impacts. As described above, firefighting agencies and natural resource managers will also benefit from the services provided by HWMO through the requested funds, as the projects we will implement are specifically and collaboratively designed to assist their efforts to protect communities and natural resources from wildfire through non-suppression activities that take place before and after wildfire events.

**5. Describe the geographic coverage.**

Wildfire issues occur on every island in the state. For the last 11 years, HWMO has been able to provide quality wildfire mitigation, education, and planning projects with the highest level of expert input while minimizing the costs for communities and stakeholders. However, due to limited funding, our geographic focus was initially restricted to Hawaii Island and recently West Maui also, where the largest wildfires have occurred. Over the last two years, HWMO drove every road in the state and assessed 36 wildfire hazard components for each residential area in order to prioritize areas that need immediate assistance. The hazards assessed included quantity and type of flammable vegetation, combustible building materials, firefighter access to water, climate, proximity to fire station, and more. From these

assessments we were able to determine which hazard reduction efforts to target toward which communities. We have recently begun working with collaborators statewide to address the hazards we uncovered through our statewide assessment. This grant will allow us to broaden and deepen this work in areas that have never had (or had very little) wildfire prevention and post-fire recovery assistance. Our goal is to build resilient fire-adapted residential communities and landscapes statewide through strategic collaborative projects. We are aiming to initiate long-term preparedness, protection, and public safety by increasing public awareness of the severity of the wildfire issue in Hawaii and initiate actions on many levels to mitigate the risk.

## II. Service Summary and Outcomes

### 1. Describe the scope of work, tasks and responsibilities

The work that will be carried out during the grant term will be focused in the following three categories: 1) Outreach and Education; 2) Hazard reduction in and around communities and sensitive natural areas; and 3) Pro-active wildfire protection planning with communities. The tasks associated with these focal efforts include projects such as fire-safe landscaping/ wildfire preparedness workshops for homeowner associations, getting our already-developed K-12 wildfire preparedness and fire ecology curriculum into schools, creating and running public service announcements, reducing hazardous vegetation around homes and subdivisions, increasing firefighting resources, and initiating Community Wildfire Protection Plans so that communities not only have a plan they developed from their own priorities but so they are eligible for federal funds to aid their wildfire protection efforts. The responsibilities of HWMO will include planning and coordinating projects with the firefighting, natural resource management, and community entities in the priority high-risk communities so that projects are collaborative and considerate of both short- and long-term objectives.

### 2. Provide a projected annual timeline for accomplishing the results or outcomes of the service.

The following table outlines our plan for accomplishing our goals.

Activities	Q1	Q2	Q3	Q4
Work with collaborators to plan projects	*	*		
Outreach and Education- web-based resources, community events, K-12 outreach, homeowner workshops	*	*	*	*
Hazard reduction (a)- Aid communities to reduce flammable vegetation around homes, structures, and around periphery of subdivisions and increase firefighting resource availability/access		*	*	*
Hazard reduction (b)- Aid natural resource managers to reduce hazards and increase firefighting capacity/access in strategic locations to protect sensitive natural resources		*	*	*
Pro-active community-based planning	*	*	*	*

**3. Describe quality assurance and evaluation plans for the request. Specify how the applicant plans to monitor, evaluate, and improve their results.**

The following table demonstrates our plan for quality assurance and evaluation:

Activity	Quality Assurance	Evaluation method	Information to be monitored & evaluated for future improvement
<b>Outreach &amp; Education</b>	Projects will provide information requested by communities and collaborators and be tailored toward specific needs and wildfire issues faced by participants/ recipients.	Web-based surveys for online resources and evaluation surveys after community events.  Track efforts.	Was information or experience helpful? Did it answer questions? Has awareness/ knowledge increased? How? Recommendations for improvement and follow-up activities.  # materials distributed, # participants, # communities reached
<b>Hazard Reduction</b>	Projects will reduce vegetative hazards around priority high-risk areas and increase firefighting resources and acces.	Measurements and photos before and after treatment.  Track efforts	How much vegetation cleared? How much risk was reduced?  # communities with reduced vegetative hazards, total acres or homes treated, improvement in firefighting response time
<b>Pro-active wildfire protection planning</b>	Projects will be well advertised and include diverse demographics. Planning efforts will encourage community action and support follow-up activities.	Track efforts  Participant feedback survey or questionnaire	# community meetings and public input. # participants and plans Plan federally compliant? Participant experience feedback and recommendations

**4. List the measure(s) of effectiveness that will be reported to the State agency through which grant funds are appropriated (the expending agency).**

The measures of effectiveness will be as follows:

Activity	Measure of Effectiveness
Outreach & Education	- Fire prevention and preparedness outreach activities in 4 counties each quarter - Community workshops in 4 counties - Monthly web-based outreach & education activities
Hazard Reduction	- Highest priority communities and natural resource areas in all counties treated for hazard reduction
Pro-active wildfire planning	- Community-based planning efforts initiated for highest priority communities

**III. Financial**

**Budget**

1. The applicant shall submit a budget utilizing the enclosed budget forms as applicable, to detail the cost of the request.

Included.

2. The applicant shall provide its anticipated quarterly funding requests for the fiscal year 2015.

Quarter 1	Quarter 2	Quarter 3	Quarter 4	Total Grant
47,000	47,000	47,000	47,000	188,000

3. The applicant shall provide a listing of all other sources of funding that they are seeking for fiscal year 2015.

Proposed Project	Source	Amount for FY15	Status
Wildland-Urban Interface Education and Mitigation	US Forest Service	\$150,000 (\$300,000 total for FY 14 & 15)	Secured
Community Wildfire Protection Plans	US Forest Service	\$57,000 FY15 (\$114,000 total for FY15 & 16)	Proposal submitted
3 Driptanks & 2 Fuelbreaks on Hawaii Island	FEMA	n/a (We will know after EA is complete).	Project undergoing Environmental Assessment process
Pacific Fire Exchange (Fire Knowledge Exchange Consortium)	Joint Fire Science Program	[\$65,000 for FY 16, shown to demonstrate full financial picture, but not included in FY15 total]	Proposal to be submitted Feb 2014

4. **The applicant shall provide a listing of all state and federal tax credits it has been granted within the prior three years. Additionally, the applicant shall provide a listing of all state and federal tax credits they have applied for or anticipate applying for pertaining to any capital project, if applicable.**

Not applicable

5. **The applicant shall provide the balance of its unrestricted current assets as of December 31, 2013.**

\$150,795.10

#### **IV. Experience and Capability**

##### **A. Necessary Skills and Experience**

Hawaii Wildfire Management Organization is the only entity doing the full spectrum of non-suppression wildfire protection activities in the state. For 11 years we have been providing wildfire education, engaging and assisting communities, writing fire plans, reducing hazards, and improving firefighting capacity. Over this time, we have learned, adapted, developed successful strategies and techniques, and built networks of partnerships and collaborations to increase public safety and to protect Hawaii's natural and cultural resources from wildfire. We are well prepared and positioned to accomplish the tasks described above. The mission of the organization and all of our activities is to provide the public service of wildfire preparedness and decreased impacts. State funds provided from this application will be matched with secured federal funds, allowing us to expand our limited geographic foci to include additional fire prone communities throughout the state, greatly expanding the public benefit of our activities.

Elizabeth Pickett, Executive Director of HWMO will be responsible for oversight and implementation of the goals and activities described in this application. Elizabeth has a proven track record for successful natural resource management as well as engaging communities to be proactive. She has been leading wildfire protection projects, coordinating partner collaborations, and managing HWMO staff since 2008. From her position as Executive Director, she is also co-coordinating the Pacific Fire Exchange (PFX), a multi-partner platform for fire information, expertise, and technology exchange throughout the US-Affiliated Pacific.

Additional expertise and implementation support for the project will come from the HWMO Board of Directors, partner technical advisors, and paid HWMO staff. Details for each are provided below:

##### ***HWMO Volunteer Board of Directors***

The HWMO Board consists of some of the best wildfire expertise in the state. Federal, state, and county fire experts, land managers, ranchers, University of Hawaii Cooperative Extension, environmental scientists, and planners serve on the Board of HWMO, and co-founded the non-profit organization to address wildfire-related issues throughout Hawaii.

***HWMO Staff***

In addition to the Executive Director, HWMO's paid staff is comprised of a GIS specialist, project manager/planner, community outreach specialist, and a fire education and mitigation specialist. The requested funds include salary support for an additional project manager.

***Partner Contributors***

DLNR DOFAW and County Fire Department expertise and insight will be important contributors to these planning efforts. HWMO has established positive and productive working partnerships with these entities. Through the PFX (described above), additional fire management and resource management partners with expertise from fire ecology to community facilitation will contribute to various phases of this project. This strong partnership is organized precisely to share information and provide expertise on projects such as these. HWMO is one of the three main coordinating partners of the PFX, which positions us to not only benefit from the wealth of expertise in the consortium but to share the lessons learned in Hawaii with others across the Pacific.

**B. Facilities**

HWMO rents an office space in Kamuela, HI and stores field equipment in a storage container also in Kamuela. These facilities fit our current and anticipated needs for staff workspace and equipment storage, so long as we can continue to cover the associated expenses.



## V. Personnel: Project Organization and Staffing

### A. Proposed Staffing, Staff Qualifications, Supervision and Training

HWMO has achieved much of its success through strong partnerships and collaboration, and very dedicated and passionate employees who often donate additional time to their projects. With a sufficient budget and the ability to hire our staff members full-time rather than part-time as we have funds for now, the scope and strength of our work would increase dramatically.

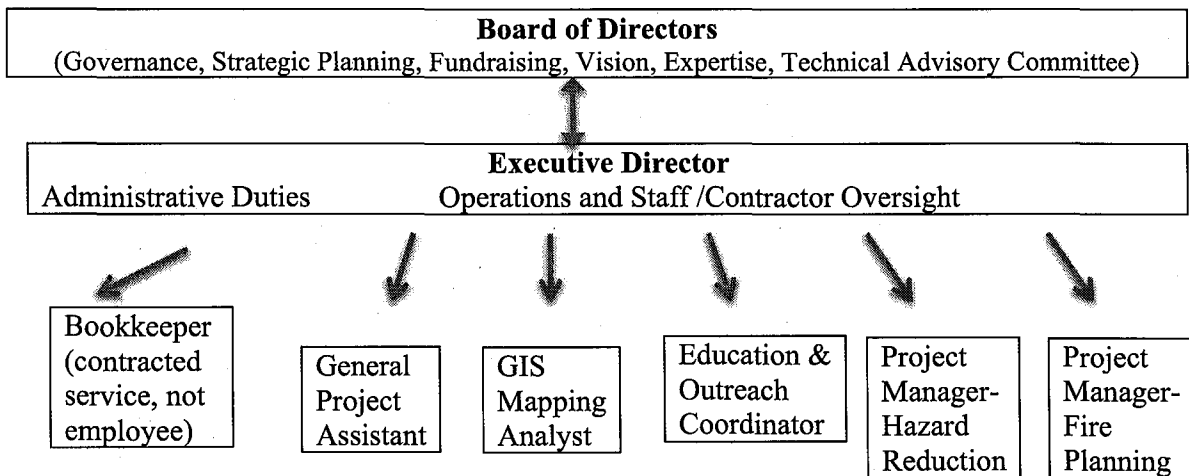
The proposed staffing pattern to accomplish the described goals is as follows:

Staff Position	Proposed service	Qualifications
Executive Director	Responsible for overall direction of organization and accomplishment of all goals. Guide and manage daily operations, staff, progress toward milestones, administrative activities, and	Masters degree. 14+ years of natural resource management experience. 5+ years of staff management and administrative experience. Knowledgeable about wildfire issues, prescriptions, and best practices.
Education & Outreach Coordinator	Develop educational materials for youth and adults. Maintain educational operations of website. Coordinate outreach events and lead community workshops.	Bachelor's degree. 2+ years of wildfire prevention and preparedness. 2+ years working with the public. Print, web, and media skills.
Project Manager-Hazard Reduction	Coordinate and implement hazard reduction projects with communities and natural resource managers following all necessary permitting and governmental requirements.	Bachelor's degree. 5+ years of wildfire prevention or natural resource management background. 5+ years project management. Fieldwork experience. Knowledgeable about landscaping and equipment use.
Project Manager-Fire Planning	Work with communities, firefighters, and resource management agencies/organizations to initiate and develop proactive fire protection plans.	Bachelor's degree. 5+ years of wildfire prevention or natural resource management background. 5+ years project management. Works well with public. Facilitation skills.
GIS Mapping Analyst	Develop and produce map products and spatial analyses for use in planning projects, educational resources, and for firefighters who request detailed maps during fire events.	Bachelor's degree. Strong knowledge and skills of GIS mapping and analysis. 8+ years of wildfire prevention or natural resource management background.
Bookkeeper/Business manager	Maintain compliance with all laws. Provide bookkeeping services, human resources, administrative support, and payroll services.	Proper certifications and 8+ years experience.

HWMO has the experience and capacity to guide and direct these positions toward accomplishing the goals laid out in this application. We have compliant labor, administrative, and recordkeeping systems in place, an employee manual, and biannual staff evaluations and work plan updates. Additionally, HWMO holds weekly staff meetings to ensure all work is being accomplished as planned and to support each other to accomplish overall goals.

Due to our expansion over the last few years from a focus on Hawaii Island to now addressing wildfire issues statewide, we have recently (December 2013) expanded our Board of Directors to follow suit and help us increase our capacity through more fundraising. While the Board makes this transition and conducts new strategic planning and begins new fundraising efforts, we are seeking these state funds as bridge money to allow us to complete our public safety projects strongly and in the most fire prone areas across the state.

**B. Organization Chart**



**C. Compensation**

The applicant shall provide the annual salaries paid by the applicant to the three highest paid officers, directors, or employees of the organization by position.

Executive Director: \$77,010.95, Part-time GIS analyst: \$14,531.25, Education Coordinator (Position Started October 2013): \$11,569.28.

**VI. Other**

**A. Litigation**

Not applicable

**B. Licensure or Accreditation**

The applicant shall specify any special qualifications, including but not limited to licensure or accreditation that applicant possesses relevant to this request.

Each of our Technical Board Directors and Advisors maintains current training requirements for their field, mostly as firefighters and/or foresters. Our staff each have degrees in their area of expertise, and keep up with current training certifications, from field work (chainsaw and equipment training) to wildfire-specific knowledge (Firewise certifications, defensible space inspection training, etc.)

## BUDGET REQUEST BY SOURCE OF FUNDS

(Period: July 1, 2014 to June 30, 2015)

Applicant: Hawaii Wildfire Management Organization

BUDGET CATEGORIES	Total State Funds Requested (a)	Secured Federal Funds (b)	Proposed/Pending Federal Funds (c)	(d)
<b>A. PERSONNEL COST</b>				
1. Salaries	108,000	79,500	30,000	
2. Payroll Taxes & Assessments	10,800	0		
3. Fringe Benefits	16,200	11,000	4,500	
<b>TOTAL PERSONNEL COST</b>	<b>135,000</b>	<b>90,500</b>	<b>34,500</b>	
<b>B. OTHER CURRENT EXPENSES</b>				
1. Airfare, Inter-Island	3,400	3,000	2,000	
2. Insurances	10,000			
3. Lease/Rental of Equipment	0			
4. Lease/Rental of Space	14,000			
5. Staff Training	4,000			
6. Supplies	5,000	4,000	1,200	
7. Telecommunication	1,600			
8. Utilities	0			
9. Bookkeeping Service	10,000			
10. Inter-Island travel expenses (rental car, etc.)	5,000	3,000	1,800	
11. Contracted services for hazard reduction	0	49,500	15,000	
12. Other			2,500	
13				
14				
15				
16				
17				
18				
19				
20				
<b>TOTAL OTHER CURRENT EXPENSES</b>	<b>53,000</b>	<b>59,500</b>	<b>22,500</b>	
<b>C. EQUIPMENT PURCHASES</b>				
<b>D. MOTOR VEHICLE PURCHASES</b>				
<b>E. CAPITAL</b>				
<b>TOTAL (A+B+C+D+E)</b>	<b>188,000</b>	<b>150,000</b>	<b>57,000</b>	
<b>SOURCES OF FUNDING</b>		Budget Prepared By:		
(a) Total State Funds Requested	188,000	Elizabeth Pickett (808) 443-8300		
(b) Total Secured Federal Funds	150,000	Name (Please type or print) Phone		
(c) Proposed/Pending Fed Funds	57,000	41,670		
(d)		Signature of Authorized Official Date		
<b>TOTAL BUDGET</b>	<b>395,000</b>	Elizabeth Pickett, Executive Director		
		Name and Title (Please type or print)		

## BUDGET JUSTIFICATION PERSONNEL - SALARIES AND WAGES

Applicant: Hawaii Wildfire Management Organization \_\_\_\_\_

Period: July 1, 2014 to June 30, 2015

POSITION TITLE	FULL TIME EQUIVALENT	ANNUAL SALARY A	% OF TIME ALLOCATED TO GRANT REQUEST B	TOTAL STATE FUNDS REQUESTED (A x B)
Executive Director	100	\$74,000.00	50.00%	\$ 37,000.00
Education and Outreach Coordinator	100	\$52,000.00	25.00%	\$ 13,000.00
Project Manager- Hazard Reduction	50	\$26,000.00	100.00%	\$ 26,000.00
Project Manager- Fire Planning	100	\$52,000.00	50.00%	\$ 26,000.00
General Project Assistant	50	\$12,000.00	50.00%	\$ 6,000.00
GIS Mapping Analyst	50	\$20,000.00	0.00%	\$ -
(Bookkeeping Services included in overall budget but not here due to it being a contracted service).				\$ -
				\$ -
				\$ -
				\$ -
				\$ -
				\$ -
				\$ -
				\$ -
				\$ -
<b>TOTAL:</b>				<b>108,000.00</b>

**JUSTIFICATION/COMMENTS:**

HWMO has secured federal grant funds to cover at least 50% FTE of most of its needed positions, however state monies are requested to enable staff to work full-time, which will help substantially in employee retention as well as furthering accomplishments in wildfire protection throughout the state due to the increased organizational capacity. This will allow us to greatly expand the public benefit of our work.

## BUDGET JUSTIFICATION - EQUIPMENT AND MOTOR VEHICLES

Applicant: Hawaii Wildfire Managemetn Organization      Period: July 1, 2014 to June 30, 2015

DESCRIPTION EQUIPMENT	NO. OF ITEMS	COST PER ITEM	TOTAL COST	TOTAL BUDGETED
not applicable			\$ -	
			\$ -	
			\$ -	
			\$ -	
			\$ -	
<b>TOTAL:</b>				
<b>JUSTIFICATION/COMMENTS:</b>				

DESCRIPTION OF MOTOR VEHICLE	NO. OF VEHICLES	COST PER VEHICLE	TOTAL COST	TOTAL BUDGETED
not applicable			\$ -	
			\$ -	
			\$ -	
			\$ -	
			\$ -	
<b>TOTAL:</b>				
<b>JUSTIFICATION/COMMENTS:</b>				

**BUDGET JUSTIFICATION  
CAPITAL PROJECT DETAILS**

Applicant: Hawaii Wildfire Management Organization

Period: July 1, 2014 to June 30, 2015

FUNDING AMOUNT REQUESTED						
TOTAL PROJECT COST	ALL SOURCES OF FUNDS RECEIVED IN PRIOR YEARS		STATE FUNDS REQUESTED	OTHER SOURCES OF FUNDS REQUESTED	FUNDING REQUIRED IN SUCCEEDING YEARS	
	FY: 2012-2013	FY: 2013-2014	FY:2014-2015	FY:2014-2015	FY:2015-2016	FY:2016-2017
PLANS						
LAND ACQUISITION						
DESIGN						
CONSTRUCTION						
EQUIPMENT						
<b>TOTAL:</b>	<b>n/a</b>	<b>n/a</b>	<b>0</b>	<b>n/a</b>	<b>0</b>	<b>0</b>
<b>JUSTIFICATION/COMMENTS:</b>						
Not Applicable						

**DECLARATION STATEMENT OF  
APPLICANTS FOR GRANTS AND SUBSIDIES PURSUANT TO  
CHAPTER 42F, HAWAII REVISIED STATUTES**

The undersigned authorized representative of the applicant certifies the following:

- 1) The applicant meets and will comply with all of the following standards for the award of grants and subsidies pursuant to Section 42F-103, Hawaii'i Revised Statutes:
  - a) Is licensed or accredited, in accordance with federal, state, or county statutes, rules, or ordinances, to conduct the activities or provide the services for which a grant or subsidy is awarded;
  - b) Complies with all applicable federal and state laws prohibiting discrimination against any person on the basis of race, color, national origin, religion, creed, sex, age, sexual orientation, or disability;
  - c) Agrees not to use state funds for entertainment or lobbying activities; and
  - d) Allows the state agency to which funds for the grant or subsidy were appropriated for expenditure, legislative committees and their staff, and the auditor full access to their records, reports, files, and other related documents and information for purposes of monitoring, measuring the effectiveness, and ensuring the proper expenditure of the grant or subsidy.
- 2) The applicant meets the following requirements pursuant to Section 42F-103, Hawaii'i Revised Statutes:
  - a) Is incorporated under the laws of the State; and
  - b) Has bylaws or policies that describe the manner in which the activities or services for which a grant or subsidy is awarded shall be conducted or provided.
- 3) If the applicant is a non-profit organization, it meets the following requirements pursuant to Section 42F-103, Hawaii'i Revised Statutes:
  - a) Is determined and designated to be a non-profit organization by the Internal Revenue Service; and
  - b) Has a governing board whose members have no material conflict of interest and serve without compensation.

Pursuant to Section 42F-103, Hawaii'i Revised Statutes, for grants or subsidies used for the acquisition of land, when the organization discontinues the activities or services on the land acquired for which the grant or subsidy was awarded and disposes of the land in fee simple or by lease, the organization shall negotiate with the expending agency for a lump sum or installment repayment to the State of the amount of the grant or subsidy used for the acquisition of the land.

Further, the undersigned authorized representative certifies that this statement is true and correct to the best of the applicant's knowledge.

**Hawaii Wildfire Management Organization**  
(Typed Name of Individual or Organization)



(Signature)

Jan 31, 2014

(Date)

Elizabeth Pickett  
(Typed Name)

Executive Director

(Title)