



# SENATOR POHAI RYAN

State Capitol, 415 S. Beretania St., Room 213, Honolulu, HI 96813  
email: senryan@capitol.hawaii.gov phone: (808) 587-8388  
*Serving Senate District 25:*

*Hawaii Kai, Waimanalo, Keolu Hills, Lanikai & Kailua*

*Vice Chair, Hawaiian Affairs Member of Committees on Public Safety & Military Affairs & Government Operations, Ways & Means, Water Land & Housing*



**MAY**  
**2011**

## WHAT'S INSIDE:

- Earth Day Cleanup at Kapaa Quarry 2
- Post Tsunami Evacuation Meeting 3
- DLNR Off-shore Islands Site Visit 4
- Off-shore Islands Summary 5
- News in Brief 6
- Events 7
- Volunteer Info 8

PLEASE ADD US ON  
FACEBOOK  
AND TWITTER!



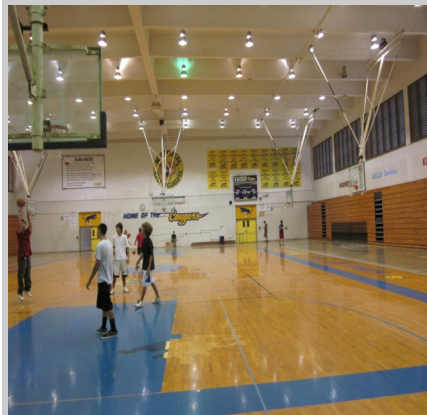
twitter.com/SenPohaiRyan  
facebook.com/SenPohaiRyan



## International Baccalaureate Diploma Attracts Students

Overlooking the community of Hawaii Kai sits the campus of Henry J. Kaiser High School with a student body of approx. 1,100 students comprising grades 7-12. Kaiser High School is almost self sustaining as they receive no Federal funds. Unlike other schools, Kaiser supports its students, facilities and activities almost entirely by weighted student formula.

Kaiser High School administration has invested a lot of resources to get their faculty trained and certified so that their school can be a registered IB Diploma Program which adds prestige to a Hawaii Public School diploma and is sought after by students from all over O'ahu.



## U.S. Presidential Scholars Program Semifinalist - Kevin Hirata

Congratulations to senior Kevin Hirata who has been selected as a U.S. Presidential Scholars Semifinalist! From nearly 3.2 million graduating high school seniors, approximately 3,000 students were identified as candidates for the 2011 U.S. Presidential Scholars Program. 560 semifinalist were selected from across the country - six (6) of these semifinalists are from Hawaii.



## High School Athletic Foundation Annual Fundraiser Event

May 7<sup>th</sup>, 2011; Sea Life Park Lū'au Grounds; 5:30pm to 8:30pm

Hawaiian Music by Roland Cazimero and the Regency Park Boys and featuring Duane Komine (KHS Class of 76), plus buy a \$20 raffle ticket for the chance to win an Aizawa Ukulele

No Host Cocktails, Hawaiian Food Buffet, Entertainment, Camaraderie and lots of story telling! Cost starts at: \$100.00 per person, \$1,000.00 for a reserved table. Make checks payable to **Kaiser High School Athletic Foundation** and mail to:

Kaiser High School Athletic Foundation

Attn: Luau Foundation Committee, P.O. Box 25112, Honolulu, Hawai'i 96825

Or visit the KAF website to make you reservation and payment on line at <http://www.kaiserathleticfoundation.org/>

**TOP LEFT:** Hawaii 5-0 honored at the Capitol (from left): Daniel Dae Kim, Alex O'Loughlin, Peter Lenkov, Executive Producer, Hawaii Five-0; Glenn Geller, Senior VP, Current Programming CBS.



**BOTTOM LEFT:** Sen. Ryan and Sen. Dela Cruz with Lauren Nicole Kealohilani Cheape, Miss East Oahu 2011, who will compete at the Miss Hawaii Pageant this summer.



**TOP RIGHT:** The Hawaii State Senate awarded Judy Bishop of Bishop & Company with the Women in Business Champion Award and Brian Bowers and Dexter Kubota of Bowers & Kubota Consulting Inc. with the 2011 Small Business Person of the Year Award.



# EARTH DAY AT KAPAA QUARRY CLEANUP

In celebration of Earth Day 2011, Senator Ryan and her staff headed out early on the morning of Saturday, April 23<sup>rd</sup> to pitch in supporting the Windward Apuhuaa Alliance for a day of community service. Over 100 people volunteered their time to get down and dirty cleaning up opala strewn all around the Kapaa Quarry Road area. Over the past 8 years (since 2003), over 500,000 lbs of waste has been collected during this very successful annual event. Special thanks for organization and funding of this event go to Ms. Shannon Wood of WAA, Ameron Hawaii, Harold K.L. Castle Foundation and All Pool & Spa.



Senator Ryan, organizer and Kailua resident Shannon Wood and Representative Chris Lee take a quick moment out to pose for our camera!



## Hawaii State Department of Land and Natural Resources

### Mission Statement:

"Enhance, protect, conserve and manage Hawaii's unique and limited natural, cultural and historic resources held in public trust for current and future generations of visitors and the people of Hawaii nei in partnership with others from the public and private sectors."



# Post Tsunami Evacuation Meeting

Senator Pohai Ryan coordinated a Post Tsunami Community Meeting for the Kailua, Waimanalo, and Kaneohe communities on April 5, 2011 at Kailua Intermediate School and hosted with other Windward Legislators. A panel of specialists spoke on their agencies' individual roles in the event of a State Emergency. Over 100 community members attended this important event.

The panel included the Director of Hawaii State Civil Defense, Ed Teixeira, Director of the Department of Emergency Management for the City and County of Honolulu, Melvin Kaku, the Director of the Pacific Tsunami Warning Center, Dr. Chip McCreery, a representative from the Disaster Preparedness division of the American Red Cross, Hawaii, Maria Lutz, and Lieutenant John Vines from the Honolulu Police Department. Also in attendance was Olivia Humilde from the Office of Disaster Assistance for the Small Business Administration.



*The panel of specialists briefed the crowd about emergency processes and answered questions from the audience.*

## Some important facts shared at the meeting:

**If you are not capable of leaving your house due to disability, you can call 911 to get to an evacuation site.**

**On occasion, it is smarter to go to a smaller mountain in the area to reach higher ground, especially if roads are congested going toward the Koolau Mountains.**

**Sirens that are 25-30 years old are being replaced, since current operations include both vintage and digital sirens.**

**Signage and evacuation routes are being updated by the Department of Emergency Management.**

**If you own a business, it is important to let the public know that you are open properly when continuing operations.**

**Reporting siren problems helps the system to operate more efficiently.**

## WHERE AND HOW OFTEN DO TSUNAMIS OCCUR?

Major tsunamis occur about once per decade. Based on historical data, about 59% of the world's tsunamis have occurred in the Pacific Ocean, 25% in the Mediterranean Sea, 12% in the Atlantic Ocean, and 4% in the Indian Ocean.

Tsunamis have been reported since ancient times. They have been documented extensively, especially in Japan and the Mediterranean areas. The first recorded tsunami occurred off the coast of Syria in 2000 B.C. Since 1900 (the beginning of instrumentally located earthquakes), most tsunamis have been generated in Japan, Peru, Chile, New Guinea and the Solomon Islands. However, the only regions that have generated remote-source tsunamis affecting the entire Pacific Basin are the Kamchatka Peninsula, the Aleutian Islands, the Gulf of Alaska, and the coast of South America. Hawaii, because of its location in the center of the Pacific Basin, has experienced tsunamis generated in all parts of the Pacific.

The Mediterranean and Caribbean Seas both have small subduction zones, and have histories of locally destructive tsunamis. Only a few tsunamis have been generated in the Atlantic and Indian Oceans. In the Atlantic Ocean, there are no subduction zones at the edges of plate boundaries to spawn such waves except small subduction zones under the Caribbean and Scotia arcs. In the Indian Ocean, however, the Indo-Australian plate is being subducted beneath the Eurasian plate at its east margin. Therefore, most tsunamis generated in this area are propagated toward the southwest shores of Java and Sumatra, rather than into the Indian Ocean.

(from the Pacific Tsunami Warning Center's NOAA website)

# DLNR ISLANDS SITE VISIT

Senator Ryan participated in a site visit to the off shore islands of Senate District 25 which are managed by DLNR. The O`ahu Land Manager of DLNR is David Smith who was born and raised in Kailua and a long time resident of Lanikai. A dream job for anyone raised in the district.

Dave Smith took both Senator Ryan and Rep. Lee to the islands to show what kind of protection measures and restoration efforts are being done by the department and volunteers. Our off shore islands are in good hands for sure!

A faithful volunteer is stationed at Makai Pier in Waimanalo who sits and watches the monk seals on Manana and warns of any unauthorized entry or disturbances to the natural inhabitants of the islands.

**What State Department is responsible for the off shore islands in district 25?**

**Answer:  
State of Hawaii  
Department of Land  
and Natural  
Resources**



Top Left: Senator Ryan talks with DLNR's Oahu Forestry and Wildlife Branch Manager David Smith off the coast of Manana, more commonly known as Rabbit Island. Bottom Left: DLNR's Wildlife Biologist, Amarisa Marie, Senator Ryan, David Smith, and Representative Chris Lee look toward Kaohikaipu Island. Top Above: Hawaiian Monk Seals bask on the coast of Manana. Bottom Above: Mokulua North, off the coast of Waimanalo. Background: An 'Ewa'ewa, or Sooty Tern, flies over Moku Manu.



# OFF-SHORE ISLANDS

## Kaohikaipu Island State Seabird Sanctuary (Black Rock or Turtle Island)

Kaohikaipu is located right next to Manana, off the coast of Makapuu. It is home to three species of birds: the Wedge-Tailed Shearwater, Bulwer's Petrel, and the Black Noddy. Because of these birds' residence on the island, it is protected from outsiders by the state.



## Manana Island State Seabird Sanctuary (Rabbit Island)

Manana is located just off the coast of Makapuu. In the 1880's, John Adams Kuakini Cummings, the son of a high-ranking Hawaiian chiefess, owned a sugar plantation in Waimanalo and created a rabbit colony on the island, close to his plantation – that's how it received its nickname. In the 1980's, after realizing that the island was a significant seabird breeding area, the rabbits on the island were eradicated.



## Na Mokulua (One Hump/Two Hump)

Located about  $\frac{3}{4}$  of a mile off the coast of Lanikai, Na Mokulua literally means "the Two Islands." The bigger is called "Moku Nui" and the smaller, "Moku Iki." Moku Nui has a cover on the side facing the ocean and the shape of these two islands creates a nice surf area for longboarders.



## Popoia (Flat Island)

A small break can be found near this island, located in Kailua bay, about a quarter mile from shore. The island is home to many birds who lay their eggs across the terrain. There is a small beach, which faces the shores of Kailua.



*Other off shore islands in Kailua Bay; Moku Manu and Moku Lea.*

# NEWS IN BRIEF

## Senate Honors Aunty Aggie

Agnes Kalanihookaha Cope, affectionately known as Aunty Aggie, was honored at a State Capitol ceremony on April 8, 2011 in recognition of her lifelong achievements on behalf of the Hawaiian community. Governor Neil Abercrombie, Speaker of the House Calvin K.Y. Say and the Hawaii State



*Aunty Aggie with Governor Abercrombie and the Senators.*

Senate presented her with a Senate Certificate of Honor and declared April 8, 2011 to be "Agnes Kalanihookaha Cope Day" in Hawaii. Her work founding the Waianae Coast Culture and Arts Society was an enormous effort that helped to preserve many Native Hawaiian traditions and practices; her wealth of knowledge and experience continues to be a great contribution to the Waianae Coast on Oahu, where she resides. Aunty Aggie serves as a member of the Kupuna Council for the Waianae Coast Comprehensive Health Center, which she also helped to found.

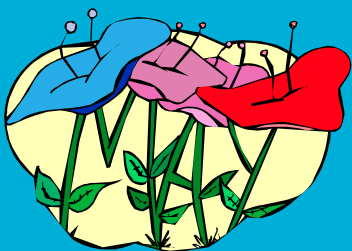
### Upcoming Events & Activities with Senator Ryan:

- Summer Sunday Walks With the Senator
- Community Meeting with Hawaii Kai community-*"Mauka to Makai"*
- SD25 "Minding Our Business" conference
- In-District Days with the Senator

Dates to be determined.

### Dept. of Education Emergency Options

The Department of Education (DOE) is in discussion with Hawaii State and Honolulu City & County civil defense agencies concerning alternative or additional tsunami evacuation sites on DOE property. The DOE is organizing its formal memorandum on available tsunami refuge centers, though it is in the early stages of this project. Any additional information the DOE supplies will be included in future newsletters.



## Hanapepe BROW access open soon

Hanapepe BROW is an ocean entry pathway in the Portlock area. The City and County of Honolulu officially closed the entryway in August 2009 by erecting a gate that remains locked due to the "unsafe" condition of the pathway. These conditions consist of a Hau tree that has grown into the access and broken accompanying walls, concrete steps that are in disrepair along with its railing, and the ladder that leads to the ocean remains somewhat deteriorated.

The gate barring open access has been met with much resistance since 2009. It has been reported that at least a handful of community members completely disregard the gate at the entryway, mostly younger ocean-goers who want access to the surf.

Anne Marie Kirk, a member of Livable Hawaii Kai Hui, has been working with the group to regain access to the Hanapepe BROW access point. This is an important goal because it would allow entry back onto land after jumping into the ocean at China Walls, another well-known surf spot. Rescue missions can also be made along this stretch of beach in Hawaii Kai, since the water's current often drops surfers off in this area.

The City & County of Honolulu's Parks and Recreation Director, Gary Cabato, has decided that the community's concerns are warranted and will work closely with the community to address their concerns. The group has submitted written testimony to Mr. Cabato, who is interested in partnering with the community to make the repairs that Hanapepe BROW needs to be considered safe. Updates to come.



# EVENTS

**May 1 2011 May Day** at Windward Mall starts at 9am. The event, put on by Koolaupoko Hawaiian Civic Club, features a lei competition and live Hawaiian music.

May 7<sup>th</sup> **Kaiser Athletics Fundraiser** is an event put on by Kaiser High School Alumni and the community to aid the cost of athletic facilities, equipment and uniforms. \$100 per person, \$1,000 for a reserved table, 5:30pm-8:30pm, Sea life Park Luau Grounds. Contact: <http://www.kaiserathleticfoundation.org/>

May 13-14 **2011 Waimanalo Relay for Life** is the main volunteer-driven cancer fundraising event of the American Cancer Society – teams let representatives take turns walking a certain distance to raise funds from pledges. The event takes place on at 6pm, Waimanalo Beach Park. Contact: Robert 'JJ' Laanan at 808-432-9164 or [robert.laanan@cancer.org](mailto:robert.laanan@cancer.org)

May 14 **Keiki Rodeo**, the 8<sup>th</sup> Annual Fundraiser for Therapeutic Horsemanship of Hawaii, includes a horsemanship competition as well as pony rides and a petting zoo. Admission is FREE! 10am, Waimanalo Polo Field. Contact: <http://www.thhwaimanalo.org/>

May 14-15 **2011 Honolulu Book and Music Festival** is FREE for the public and hosts hundreds of groups that contribute to a fun day for families and their keiki. Awesome deals on books and music from

different publishers and distributors from across Hawaii. 10am-5pm, Civic Grounds at Honolulu Hale. Contact: <http://www.hawaiiobookandmusicfestival.org/>

## COMMUNITY MEETINGS

**MAY 5 Kailua Neighborhood Board;** 7:00pm, first Thursday of every month, Kailua Recreation Center, 21 South Keolu Drive

**MAY 9 Waimanalo Neighborhood Board;** 7:30pm, second Monday of every month, Waimanalo Public Library at Waimanalo Elementary

**MAY 24 Hawaii Kai Neighborhood Board;** 7:00pm, 4th Tuesday of every month Hahaione Elementary School Cafeteria

**Kailua Seniors Club;** Tuesdays at 9:00am, Kailua District Park, 21 South Kainalu Drive

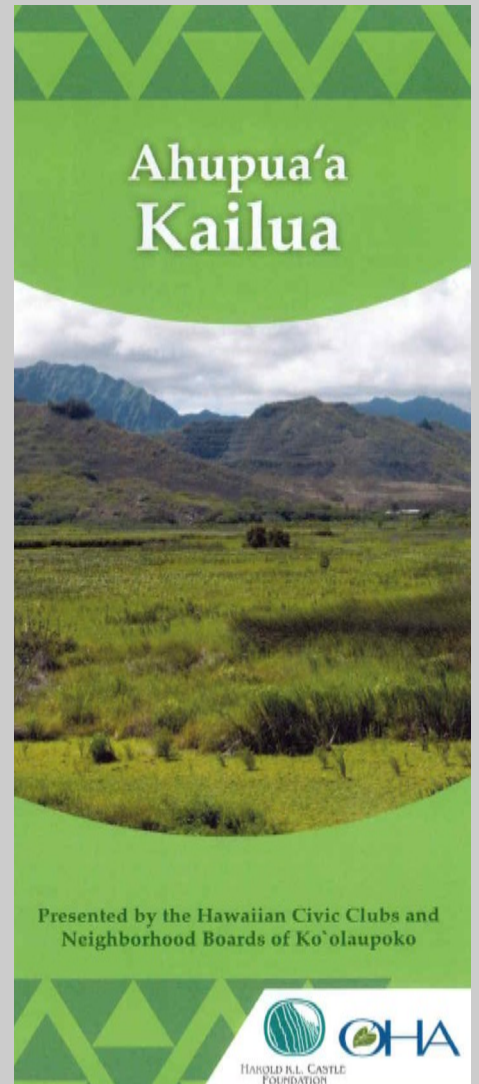
**Waimanalo Seniors Club;** Tuesdays at 9:00am, Waimanalo District Park, 41-115 Hihimanu Street

## FARMERS MARKETS

**Makeke o Maunaloa Farmers Market (Hawaii Kai);** Saturdays, 9am-1pm, Kaiser High School, 511 Lunalilo Home Road, [MOMFarmersMarket@gmail.com](mailto:MOMFarmersMarket@gmail.com)

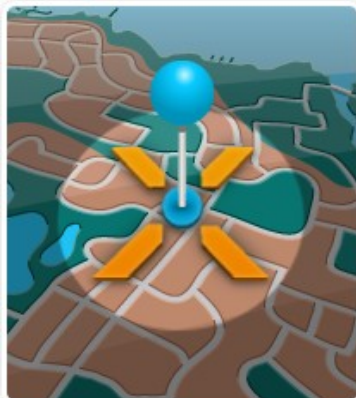
**Kailua Farmers Market;** Thursdays, 5-7:30pm, 609 Kailua Road (Parking lot by Longs)

## Ahupuaa Info!



The Koolaupoko Hawaiian Civic Club put together these beautiful brochures that explain some key points for each ahupuaa land division delineated in conjunction with the Board of Water Supply's Koolaupoko Watershed Project. The brochures, available through a grant provided to the civic club by the Castle Foundation and the Office of Hawaiian Affairs, is a great jaunt into the reason for ahupuaa delineation as well as an informative brochure to share with family and friends. You can find the brochures, free to the public, online — so you can give them out yourself!

Address:  
[http://www.koolaupokohcc.org/Ahupua\\_a\\_Brochures.html](http://www.koolaupokohcc.org/Ahupua_a_Brochures.html)



City and County of Honolulu's  
Department of Emergency Management uses  
[NIXLE.com](http://NIXLE.com) to inform  
community members of  
**EMERGENCY  
MANAGEMENT UPDATES**  
in the event of an emergency.



# Volunteer Opportunities

## SINGLE DAY EVENT OPPORTUNITIES:

**Ulupo Heiau** and its lo'i kalo need volunteers to help Ahahui Malama i ka Lokahi & Kailua Hawaiian Civic Club make repairs and clean the area. What to bring: backpack, lunch, water, rain gear, mosquito repellent, gloves. Tools: Sickles, pruners, handsaws, hand cultivators. Saturday, May 14, 8:30am – 12:30pm, Meeting at the Windward YMCA parking area, contact [email@ahahui.net](mailto:email@ahahui.net), 808-263-8008

**Na Pohaku o Hauwahine** needs volunteers for wetland cleanup. What to bring: backpack, lunch, water, rain gear, mosquito repellent, gloves. Tools: Sickles, pruners, handsaws, hand cultivators. Saturday, May 21, 8:30am – 12:30pm, meeting place located on the makai side of Kapaa Quarry Road about one mile from the Kalaniana'ole Highway stoplight, contact [email@ahahui.net](mailto:email@ahahui.net), 808-263-8008

**Heeia Stream Restoration Workday** needs volunteers to help restore sections of the stream banks and nearby forest with native vegetation, install erosion control material. There will also be educational workshops about the area and methods. Work days are held the 3rd Saturday of every month from 8am-11am, this month: Saturday, May 21. Hui Ku Maoli Ola: Native Plant Nursery 46-403 Haiku Rd, Kaneohe, for more information or to become a volunteer call 381-7202 or visit [www.huihawaii.org](http://www.huihawaii.org).

**Kailua Boat Ramp Cleanup** with the Surfrider Foundation's Oahu Chapter is one of many volunteer opportunities (for all ages) that the foundation will participate in this year. Bring your own reusable water bottle and sunscreen. Food will be provided after the cleanup. May 14, 10am – 12pm, email [surfrideroahu@gmail.com](mailto:surfrideroahu@gmail.com) for meeting location or questions.

## ONGOING OPPORTUNITIES:

**Waimanalo's Hawaii Food Bank** needs volunteers to pack bags of food and make other arrangements for those in need. Volunteer opportunities are every Wednesday at 4:00 pm. St. Matthew's Episcopal, Waimanalo. Please call aunty Nickie Hines to help at 259-8406.

**Seagull Pre-School** has many volunteer opportunities for those who enjoy helping young keiki ages 2-5. There are many choices ranging from reading to the kids to taking them on field trips. Contact: Jayne Arasaki, 674-1444

**Community Helping Schools** is dedicated to improve the quality of education in Hawaii's public schools. Many public schools turn to Community Helping Schools with requests for various volunteer services. You can see what the schools need help with on Community Helping School's website at <http://communityhelpingschools.org/wishes/volunteer>, Contact: Kathie Wells, 225-2621

**Sea Life Park** has various volunteer opportunities to help both the animals and the community. If you enjoy working with animals you can help rehabilitate sick and injured seabirds, or if you want to educate the community you can assist with student outreach programs. More information and applications are on their website [www.sealifeparkhawaii.com/educintern\\_volunteer.asp](http://www.sealifeparkhawaii.com/educintern_volunteer.asp). Contact: Brianna Saylor, 259-2513.

**Volunteers Needed to Assist A Great Veterans Event**  
**Volunteers needed to help support the**  
**25th National Veterans Golden Age Games**  
**May 26-31, 2011**  
**Contact Shelley Eyerly at 808-585-6191**  
**register to volunteer online at [www.veteransgoldenagegames.va.gov](http://www.veteransgoldenagegames.va.gov)**



**Mahalo to our Senate District 25 office session staff! You've been a great help to all of us!**

***Kamakani Macdonald-Chun***



***Debra Shiraishi-Pratt***



***Namahana Tolentino***

Senate District 25 Office Staff: Kaleilani Keolanui, *Legislative Office Manager*, Brenda Baker, *Legislative Coordinator*, Debra Pratt, Kamakani Macdonald-Chun & Blaine Namahana Tolentino, *Legislative Aides*  
Newsletter Editor: Blaine Namahana Tolentino, Contributing photos by Kamakani Macdonald-Chun