

SENATOR POHAI RYAN

State Capitol, 415 S. Beretania St., Room 213

Honolulu, HI 96813

email: senryan@capitol.hawaii.gov phone: (808) 587-8388

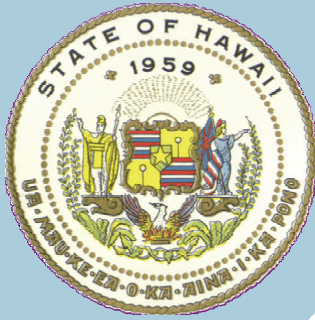
Serving Senate District 25:

Hawaii Kai, Waimanalo, Keolu Hills, Lanikai & Kailua

Vice Chair, Hawaiian Affairs. Committee Membership: Public Safety, Military Affairs & Govt. Operations, Ways & Means, Water Land & Housing



APRIL 2012



INSIDE THIS ISSUE:

- Kailua Chamber of Commerce 2
- Waimanalo Health Center 2
- Philanthropy in Hawaii 3
- Kawainui-Hamakua Plan 4/5
- Hawaiian Caucus Event 6
- Malama Maunaloa 7
- Photos 8

VOLUNTEERING IN HAWAII

Aloha District 25!

April is National Volunteer Month. As such, this month's newsletter is dedicated to highlighting some excellent opportunities to give back. The volunteer work that consistently defines the communities within District 25 exemplifies the good character that resonates throughout the State of Hawaii. There have already been so many facets of volunteerism in the effort to aid the Board of Water Supply in their Watershed Management Plan for Koolauloa, which has already positively impacted the preservation of District 25's natural resources. Numerous other organizations within the communities of Hawaii Kai, Waimanalo and Kailua do great work to create and sustain community engagement and development.

Volunteer work is a great opportunity for people to gain work experience and interface with mentors in our community, but it is also a great way for anyone who is transitioning back into the work force to acquire valuable skills and to network. I especially want to encourage people who are returning to the work force, like mothers or people who want to learn new skills that can be applied in the paid work force environment to get out there and lend a hand in a volunteer capacity.

It is also important to remember that people's time, energy, life experience and enthusiasm are all as important, if not more so, than philanthropic financial support of our community organizations.

Senator Pohai Ryan

PLEASE ADD US ON
FACEBOOK
AND TWITTER!



[facebook.com/SenPohaiRyan](https://www.facebook.com/SenPohaiRyan)
twitter.com/SenPohaiRyan



Community Coastal Management Planning Meetings

April 11, 5:30-8:00 PM
@Waimanalo Hawaiian Homestead Assoc. Hale

Community brain storming, first of monthly meetings. Come and share your thought for the future of Waimanalo Coastline and expected renovation of Sherwood Forest Beach Park.

District

Agriculture Day

April 29, 2012
9am-4pm
@Kailua

Intermediate School



Including a farmers market, food vendors, and speakers and exhibitions from around Agriculture !

Kailua Chamber of Commerce

The Kailua Chamber of Commerce is a volunteer organization that works to promote commerce in Kailua by making efforts to attract and interest visitors, disseminate business information, and advertise and promote the prosperity of Kailua. The Kailua Chamber of Commerce uses many strategies and combines the efforts of its experienced members to improve business in Kailua. Business owners and operators are qualified to help the Kailua Chamber of Commerce on one of their many Committees. Non-profits and persons associated with Kailua businesses can also apply. The volunteer application form can be found on their website, <http://www.kailuachamber.com>.

These are some of the committees you can help with at the Kailua Chamber of Commerce!

Community Affairs/Development Committee: The Committee shall consider and report on all questions pertaining to commercial and industrial interest in Kailua, especially the establishment of new Businesses, manufacturing or commercial enterprises, other than those matters specifically assigned to other committees

Legislative Committee: The Legislative Liaison Committee shall analyze and report on legislative proposals from municipal, state and federal bodies that would affect the civic and economic life of Kailua

Membership Committee: The Membership Committee shall consider all applications for membership, make regular reports to the Board, assist in monitoring and encouraging attendance at KCOC functions, and in general establish a close relationship between all KCOC members.

Retail Committee: The Retail Committee shall be composed of KCOC members who are engaged in the retail trade in Kailua. Its objective shall be to promote and encourage all matters pertaining to the welfare and betterment of retail business in Kailua.

Awards/Events Committee: The Awards/Events Committee shall honor KCOC members, individuals from the Kailua community and businesses in several categories at the General Membership meeting in November. This committee also shall have responsibility for planning, supervising and executing any fund-raising event.

Marketing/Communications Committee: This committee is in charge of marketing the chamber, maintaining the website and communicating the chamber's mission to existing members, potential members, and the community.

Executive Committee/BOD - The Executive Committee shall review requests from staff and committees for new programs and/or changes to existing programs, including financial impact, develop a business plan for the following year and perform such other duties as may be assigned by the Board. Prior to the end of each fiscal year the Executive Committee, in consultation with the Treasurer, shall prepare and submit to the Board for its approval or modifications a budget for the next fiscal year.

Visitors Center Volunteer - Visitors center volunteers work in the visitors center, interacting with walk in traffic and answering calls. It is your job to give directions, offer advice on places to go and things to do, as well as passing out resources and materials. This is a great opportunity for Realtors and other members who have businesses that require networking.

(All information taken from the Kailua Chamber of Commerce website)

Waimanalo Health Center



The Waimanalo Health Center is always looking for people who want to help out around this important staple of the Waimanalo community. There are volunteer opportunities in gardening, landscaping, carpentry, maintenance or clerical work. Behind the Health Center buildings, on the makai side of the property, there is a beautiful garden that is always in need of extra care. Before you can volunteer at the Waimanalo Health Center, you must fill out a Volunteer Registration Form (which can be found on their website <http://waimanalohealth.org/>). You can email the Director of Community Services at whc@waimanalohc.org or 808-259-7949.

All information and photos taken from the Waimanalo Health Center website.

Philanthropy in Hawaii

Castle Foundation

The Harold K.L. Castle Foundation, located in Kailua, helps aid organizations in the grant process and invests in initiatives that support their mission. In 1917, the foundation founder, Harold Kainalu Long Castle, purchased 9,500 acres of land in the Kailua ahupuaa. After acquiring this land, Castle gave parcels to churches of different denominations, hoping to build up the area. He also awarded land that would later become schools, hospitals, and a portion of the Kaneohe Marine Corps Base. The foundation was created by Castle in 1962 and stands out as the largest private foundation based in Hawaii.

Their mission includes helping to provide access for all children, regardless of socioeconomic background, to high-quality education (K-12), preserving the

near-shore marine life populations in Hawaii, and investing in the Windward Oahu community and in “compelling” opportunities that could help all of Hawaii. The Castle Foundation provides resources for grant seekers on their website, but those that are applying for a grant directly from the Castle Foundation must be a non-profit or a public school.



Queen Emma

Queen’s Medical Center, which was originally called the Queen’s Hospital, was founded by Queen Emma and King Kamehameha IV in 1895.

It was King Kamehameha IV, also known as Alexander Liholiho, who first spoke to the State Legislature with the intention of creating a hospital for the people of Hawaii. Because of the introduction of many new and serious diseases by the onslaught of foreigners, the existence of the Hawaiian race was at a threshold of great risk.

It’s said that King Kamehameha IV and Queen Emma literally went door-to-door to solicit necessary funding. In just over a

month, they raised \$13,530 and were given \$6,000 by the Legislature to begin their hospital. The hospital was formally opened on August 1, 1859. One of the statutes of the hospital says that the entity provides free health care for people of native Hawaiian ancestry if they are not able to afford treatment – many people think this is simply a rumor, but there are many accounts that prove this as fact. The hospital also has a policy to treat any case of emergency or urgent care need regardless of ancestry or ability to pay. Patients’ families who are not residents of Oahu are able to stay near their ill family member by staying in on-campus housing.

Princess Pauahi

Princess Bernice Pauahi Paki Bishop is the last surviving heir and great-granddaughter of King Kamehameha I, who united the Hawaiian Islands. She is best known in the islands for her contribution to Hawaii through Kamehameha Schools, which was established in 1887 using the revenues from her private estate (a collection of investments made from original landholdings awarded to her according to her high rank in the Hawaiian monarchy).

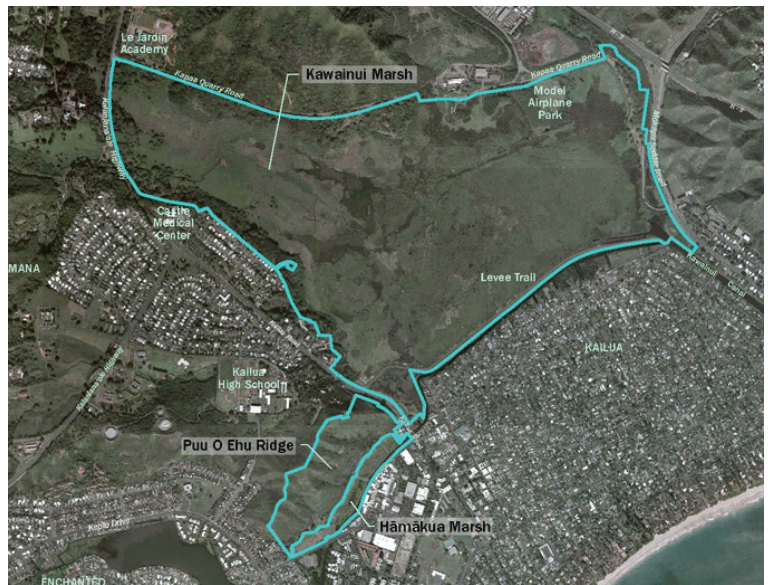
Princess Pauahi designated, to her five trustees, the ability to invest her estate at their discretion and use the income to operate Kamehameha Schools, which was originally indicated to be two schools in the Hawaiian Islands (one girls school and one boys school) under the single name, Kamehameha.

Pauahi passed away on October 16, 1884; at the time of her death, the value of her holdings stood at about \$474,000. Today, it is valued, at more than \$6 billion. These monies are invested in the entity of Kamehameha schools in so many amalgamations. The school is well-known for its commitment to students attending one of the many campuses (Kapalama, Big Island and Maui), but also for their funding of tuition for Hawaiian students attending other private schools as well as their dedication to charter schools in rural areas.

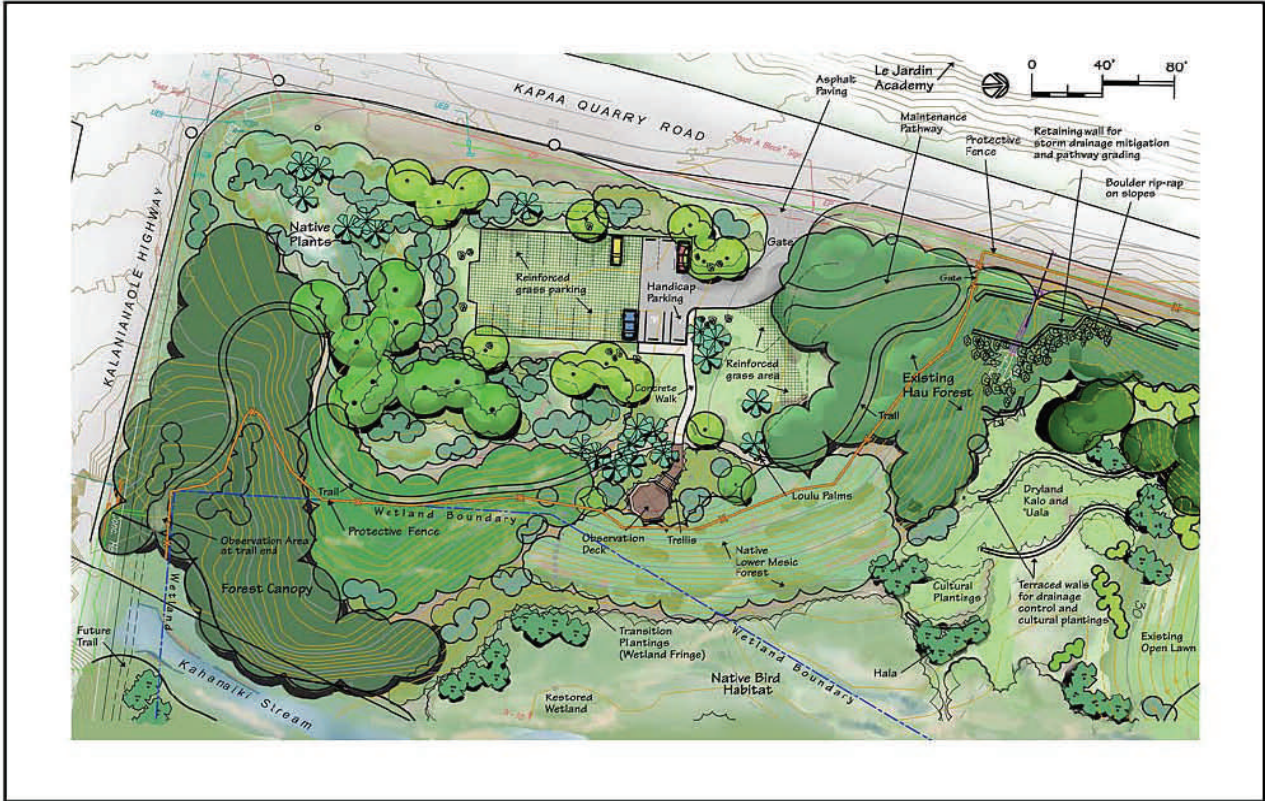


Kawainui-Hamakua Marsh Complex Master Plan

Kawainui Marsh is the largest remaining wetland in the State of Hawaii and is designated as a Ramsar Wetland of International Importance. Presently, the Department of Land Natural Resources (DLNR), the Division of Forestry and Wildlife (DOFAW), the Division of State Parks (DSP) and the State of Hawaii are updating the master plan, which has not been refurbished since 1994. DLNR anticipates having a meeting for updates during the later part of June. The master plan that is being worked on today includes Hamakua Marsh as well as Puu O Ehu Ridge. The plan, which is a guide for any possible future projects of improvements for the entire Kawainui-Hamakua Marsh Complex, covers 1,003 acres. Just last year, the Wetland Restoration and Habitat Enhancement Plan was completed; this Plan delineates ways to rejuvenate the 60-acre habitat (near the intersection of Kailua Road and Kapaa Quarry Road) for Native Hawaiian waterbirds, migratory shorebirds, waterfowl, and native fish species. There are many volunteer organizations helping to make improvements in these areas, including Ulupo Heiau, Na Pohaku O Hauwahine, and Kaha Park.



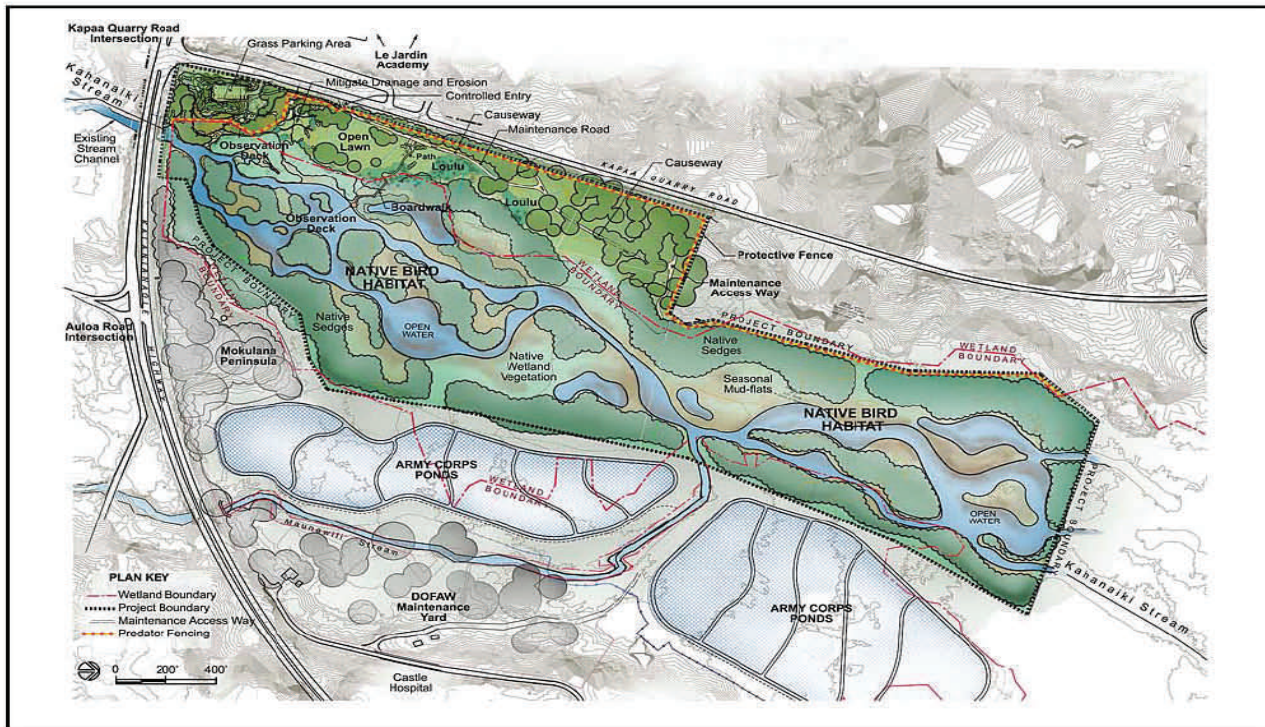
All information taken from the Kawainui-Hamakua Marsh Complex Master Plan Website at <http://www.hhf.com/kawainui/index.html>.



Conceptual Landscape Plan - Southwest Corner (Area A)
 KAWAINUI MARSH WETLAND RESTORATION
 AND HABITAT ENHANCEMENT PLAN
 KAILUA, OAHU

Figure 4.5

Prepared for:
 State of Hawaii
 Department of Land and Natural Resources
 Division of Forestry and Wildlife



Kawaiinui Marsh Restoration Conceptual Plan
 KAWAINUI MARSH WETLAND RESTORATION
 AND HABITAT ENHANCEMENT PLAN
 KAILUA, OAHU

Figure 4.1

Prepared for:
 State of Hawaii
 Department of Land and Natural Resources
 Division of Forestry and Wildlife

Hawaiian Caucus Event

The Hawaiian Caucus Event honored many facets of the Hawaiian community and some of the great contributions of the monarchy's royal leaders during the last week of March. The theme of the event was "Hookahi Kailiau like ana," which means *wielding the paddles, working together*.

This annual event is organized by legislators who are members of the Native Hawaiian Caucus. The Native Hawaiian Caucus is a bipartisan caucus comprised of Senators and House Representatives who are Hawaiian or have a large percentage of Hawaiians in the community they represent. As a group they bring up and discuss concerns that have to do with state legislation regarding Hawaiian issues.

The event featured discussions about the work of Prince Jonah Kuhio, who initiated the Department of Hawaiian Home Lands. There were also discussions about King Kamehameha I and his notorious history as a great warrior who uniquely united the Hawaiian Islands under one King.

The Hawaiian Caucus also uses the event to honor members of the Hawaiian community that contribute greatly to the community through their diligence and leadership. Because the theme of this year's Hawaiian Caucus Event was based on Hoe Waa, paddling in Hawaii, the honorees included Edith Van Giesen, Hannie Anderson and Douglas Pooloa Tolentino.



Castle Medical Center



Castle Medical Center, which is located at the junction of Kailua Road and Kalaniana'ole Highway, has a long list of volunteer opportunities for those that are interested. All volunteers can apply through their website at <http://castlemed.org>.

To be a volunteer at Castle Medical Center, you need to meet a **few minimum requirements**. You must:

Be 16 years of age or older

Commit to a minimum of six months of service, or to a period as a summer volunteer

Be able to volunteer for one four-hour shift per week (but you cannot volunteer for more than twelve hours per week)

Have a current 2-Step TB test (two separate TB tests done within the last year) or a chest X-ray (when appropriate)

Have medical clearance from a physician (a form will be provided)

Wear full-length **white** slacks, jeans, or scrub pants; and wear covered shoes and socks of any color.

Senator On The Move!

3/1 Legislative Lunch Reception for
Kauai Hart Hemming

3/1 Kailua Neighborhood Board

3/2 Art at the Capitol Open House

3/3 Annual Waimanalo Agriculture
Association Party

3/12 Waimanalo Neighborhood
Board

3/13 Lunch at the Capitol with Kailua
Senior Citizens Club

3/14 Hawaii Diabetic Association's
Legislative Day Breakfast

3/14 Legislative Reception: National
Federation of Independent Business
Hawaii

3/19 Kukakuka Meeting at the State
Capitol on Native Hawaiian Health

3/19 Kailua Community Meeting:
Beach Parks Activities

3/20 Legislative Breakfast: Junior
League of Honolulu

3/21 BIA-Hawaii Annual Stew Chal-
lenge

3/23 Panelist: Native Hawaiian Sym-
posium on Climate Change

3/24 Pep Talk: Kainalu Little League

3/24 Participant in Prince Kuhio Day
Parade

3/27 Kick-Off Day, Legislative Hawai-
ian Caucus: Honoring Prince Kuhio

3/27 Hawaii Kai Neighborhood
Board

3/28 KITV Interview

3/28 Honoring King Kamehameha
Day: Legislative Hawaiian Caucus

3/28 Hawaii Medal of Honor Cere-
mony

3/29 KSSK Radio

3/30 Hawaii News Now Interview

3/30 Legislative Hawaiian Caucus
Day

3/31 Hosted Clean Energy Fair Wai-
manalo, HI

Malama Maunalua

The non-profit Malama Maunalua works to repair the considerable damages done to Maunalua Bay, located in the district of Hawaii Kai. Maunalua Bay occupies the entire shoreline between Black Point and Koko Head, providing a natural resource for a huge amount of residents. The ahupuaa it occupies is roughly 22 square miles and reaches back to the Koolau Mountain Range. There are approximately 67,000 people living in this area today.

Over the years, a combination of invasive species and development technology has endangered some of the chief elements of the bay, creating a scarcity of fish and limu (seaweed). More than 3,000 volunteers and partners have helped to rejuvenate this natural resource. The action taken by Malama Maunalua is based on the oral knowledge of long-term residents of the area as well as scientific analysis. Their focus is to remove invasive alien algae, reduce run-off that carries sediment and pollutants into the bay, and increase marine life. To volunteer with Malama Maunalua, visit their website at <http://malamamaunalua.org>



All information and photos taken from the Malama Maunalua website.

EVENTS

April 4 (Wednesday), 6:30pm

The Waimanalo Senior Citizens Club will present a free musical performance at Waimanalo Public & School Library on April 4 at 6:30 p.m. in the Auditorium. The seniors group will perform Hawaiian songs and "oldies but goodies" music from the 50s. This one-hour program is suitable for all ages. Waimanalo Public & School Library is located at 41-1320 Kalaniana'ole Highway. For more information, please call the Library at 259-2610.

April 7-8 (Saturday-Sunday)

Office of Student Equity Excellence and Diversity from the University of Hawaii is hosting an Intercultural Retreat. One of the aims of the retreat is to assist attendees in drafting an action plan that seeks to promote change and inspire future endeavors of the UH campuses, but it will also be a relaxing camping excursion for enjoying the ocean and watching a movie. Camping will be at Bellows Air Force Station, Waimanalo and arrangements can be made at facebook.com/uh.retreat. For more information, you can also contact Matthew Nelson at 808-861-9996 or at nelson27@hawaii.edu.

April 8 (Sunday), 12:00pm-8:00pm

Olomana Gardens is hosting the Aquaponics in Paradise meetup. The event is free, but also a potluck. There will be free tours of the farm throughout the day, which includes modern growbeds and large tilapia tanks, but also horses, chickens, goats, and ducks. Olomana Gardens is located at 41-1140 Waikupanaha St, Waimanalo, HI 96795 and you can contact 808-259-0223 with any questions.

April 15 (Sunday), 10:00am-12:00pm

The Surfrider Foundation will be hosting a beach clean-up at Kailua Beach Park. Lunch will be provided and the meeting place will be behind Kalapawai Market at the first Kailua Beach Park Entrance. You should bring sunscreen, a hat, work gloves, old colanders, water bottles and any extra plastic grocery bags that could be used to store trash. Go to the facebook for "Plastic Free Kailua" or "Surfrider Foundation - Hawaii" for more information.

April 22 (Sunday), 9:30am-afternoon

The Earth Day Clean Up event will take place at Makapuu Beach and Sea Life Park. There will be food, a raffle, live music, and NGO booths. For more info, go to <http://sustainablecoastlineshawaii.org>.

"Minding Our Business" with Senator Pohai Ryan featuring Lunalilo Home and Hanapepe BROW airs Sunday, 4/1/12, at 9:00PM, and each Tuesday morning at 8:00AM throughout the month of April on Olelo channel 54 (4/3, 4/10, 4/17, and 4/24). It will also be airing at other unscheduled times throughout the month.

Senator spoke to the Kailua Senior Citizens Club, during their visit to the Hawaii State Capitol on March 13.



Senator Ryan with Maya Soetoro-Ng at Washington Elementary School.

