

House District 42

Senate District 20

THE TWENTY-SIXTH LEGISLATURE
HAWAII STATE LEGISLATURE
APPLICATION FOR GRANTS & SUBSIDIES
CHAPTER 42F, HAWAII REVISED STATUTES

Log No: 25-C

For Legislature's Use Only

Rec'd JAN 28 2011

Type of Grant or Subsidy Request:

GRANT REQUEST - OPERATING

GRANT REQUEST - CAPITAL

SUBSIDY REQUEST

"Grant" means an award of state funds by the legislature, by an appropriation to a specified recipient, to support the activities of the recipient and permit the community to benefit from those activities.

"Subsidy" means an award of state funds by the legislature, by an appropriation to a recipient specified in the appropriation, to reduce the costs incurred by the organization or individual in providing a service available to some or all members of the public.

"Recipient" means any organization or person receiving a grant or subsidy.

STATE DEPARTMENT OR AGENCY RELATED TO THIS REQUEST:

DLIR - DEPARTMENT OF LABOR & INDUSTRIAL RELATIONS

AND PROGRAM I.D. NO.:

LBR501 - OFFICE OF COMMUNITY SERVICES

1. APPLICANT INFORMATION:

Legal Name of Requesting Organization or Individual:

Hale Kipa, Inc.

Dbas:

Hale Kipa, Inc.

Street Address:

615 Pi'ikoi Street, Suite 203
Honolulu, Hawaii 96814-3139

Mailing Address:

615 Pi'ikoi Street, Suite 203
Honolulu, Hawaii 96814-3139

2. CONTACT PERSON FOR MATTERS INVOLVING THIS APPLICATION:

Name Ernest M. Pletan-Cross

Title Chief Executive Officer

Phone # (808) 589-1829 x100

Fax # (808) 589-2610

e-mail punky@halekipa.org

3. TYPE OF BUSINESS ENTITY:

- NON PROFIT CORPORATION
- FOR PROFIT CORPORATION
- LIMITED LIABILITY COMPANY
- SOLE PROPRIETORSHIP/INDIVIDUAL

4. FEDERAL TAX ID #

[REDACTED]

5. STATE TAX ID #:

[REDACTED]

7. DESCRIPTIVE TITLE OF APPLICANT'S REQUEST:

Hale Kipa Services Center Complex (Ewa, Oahu) - Planning, Design and Construction.

8. FISCAL YEARS AND AMOUNT OF STATE FUNDS REQUESTED:

FY 2011 (01 JUL 2011 - 30 JUN 2012) \$ 1,500,000

9. STATUS OF SERVICE DESCRIBED IN THIS REQUEST:

- NEW SERVICE (PRESENTLY DOES NOT EXIST)
- EXISTING SERVICE (PRESENTLY IN OPERATION)

SPECIFY THE AMOUNT BY SOURCES OF FUNDS AVAILABLE

AT THE TIME OF THIS REQUEST:

STATE	\$ 500,000
FEDERAL	\$12,364,912
COUNTY	\$ -----
PRIVATE/OTHER	\$ 1,656,588
TOTAL	\$14,521,500

TYPE NAME & TITLE OF AUTHORIZED REPRESENTATIVE:

[REDACTED SIGNATURE]

AUTHORIZED SIGNATURE

ERNEST M. PLETAN-CROSS, C.E.O.

NAME & TITLE

1/28/2011

DATE SIGNED



Hale Kipa

615 Pi'ikoi Street, Suite 203 T 808 589-1829
Honolulu, Hawaii 96814-3139 F 808 589-2610
E info@halekipa.org

JAN 28 2010

Executive Staff

Punky Pletan-Cross
Chief Executive Officer

Jaque Kelley-Uyeoka
*Deputy CEO of
Outreach Services*

Mari Vermeer
*Deputy CEO of
Placement Services*

Dori Tyau
*Director of Human
Resources*

Board of Directors

Luke W.T. Yeh
Chair

Heidi K. Wild
Vice Chair

Greg J. Sitar
Treasurer

Lianne Iwanaga-Ohashi
Secretary

Stacy Evensen
Past Chair

Paul Schraff
Past Chair

Brian Isobe
Past Chair

Heidi Cregor
Past Chair

Galen Haneda

Scott W.H. Seu

Rona M. Suzuki

Susan Y.M. Utsugi

Zadoc W. Brown, Jr.
Neighbor Island Board Liaison

Andy Levin
Neighbor Island Board Liaison

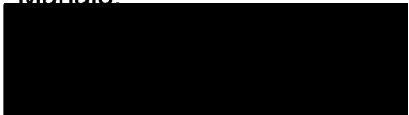
January 28, 2011

Mr. Rod Becker
Senate Committee on Ways and Means
Hawaii State Legislature
State Capitol, Room 210
Honolulu, Hawaii 96813

Aloha Mr. Becker:

As noted by the time and date affixed to this document by the Committee on Ways and Means, the State Senate hereby certifies that Hale Kipa, Inc. has officially submitted, and the Senate Committee on Ways and Means has officially received prior to its stated deadline of 4:30 p.m. on January 28, 2011, one (1) copy of Hale Kipa's Services Center Complex Application for Grants and Subsidies (per Chapter 42f, *Hawaii Revised Statutes*) for due consideration by the 26th Legislature of the State of Hawaii for Fiscal Year 2011-2012.

Mahalo



Tracy Janowicz
Director of Quality Improvement & Facilities



Application for Grants and Subsidies

If any item is not applicable to the request, the applicant should enter "not applicable".

I. Background and Summary

This section shall clearly and concisely summarize and highlight the contents of the request in such a way as to provide the State Legislature with a broad understanding of the request. Include the following:

1. A brief description of the applicant's background.

Hale Kipa was founded in 1970 by a group of concerned O'ahu citizens and community groups to operate a single group shelter for runaway, throwaway, and homeless adolescents in need. Today, it is the leading private nonprofit agency in the State of Hawai'i serving at-risk youth and their families and their guardians. Hale Kipa services annually some 3,500 youth throughout the islands with dozens of comprehensive youth service programs that span an entire continuum of need, from prevention / intervention and shelter services to foster care, transitional / residential homes and youth outreach. Please see **Attachment No. 1**, "*Roster of Programs and Services*."

2. The goals and objectives related to the request.

Hale Kipa, Inc. respectfully requests \$1,500,000 from the State of Hawai'i for FY 2011-2012, which in effect would be a re-authorization of the \$1.5 million appropriation from Section 5 of Act 160, SLH 2006, the purpose of which was to assist in facilitating the planning, design and construction of the **Hale Kipa Services Center, Residential Shelters & Educational Facility Complex** in 'Ewa, Hawai'i. Upon its request for release and encumbrance of these funds to leverage matching federal funds from the U.S. Department of Agriculture, Hale Kipa was informed by the Dept. of Budget and Finance that the Act 160 appropriation had lapsed effective July 1, 2008.

The Hale Kipa Services Center, Residential Shelters & Educational Facility Complex on Old Ft. Weaver Road in 'Ewa will initially consist of a 12,600 sq. ft. community services center, three 2,450 square foot residential shelters and a 4,000 sq. ft. educational facility, with additional plans for expansion of the educational facility and up to three more residential shelters. Hale Kipa purchased in fee in 2007 a 4.26 acre site for this specific purpose, which will provide the agency an ideal location from which youth and families can better be served. Findings from its April 15, 2009 feasibility study support both the rationale for the development and its prospects for success, and Hale Kipa anticipates breaking ground by September 2011.

The ADA-compliant, multi-purpose services center will house meeting/counseling rooms for program youth and families, conference rooms, and administrative offices, enabling Hale Kipa to more effectively meet the many diverse needs of at-risk youth in one on-site location. Each ADA-compliant residential structure will provide temporary lodging, a structured environment and emotional support for up to eight adolescents who are in crisis and/or facing the prospect of homelessness. A key component of the Hale Kipa Services Center, Residential Shelters & Educational Facility Complex will be a fully-accredited and staffed school and classrooms for program youth, including counseling and conference rooms, which will allow residents and program participants to continue their education in a

formal and structured setting, and prepare them for life in their respective communities upon their transition from shelter to a home environment.

Hale Kipa's residential shelter services operate 24-hours-a-day, seven days a week at various locations around the State of Hawai'i, providing safe haven to troubled youth working through their problems, and offering support to parents and guardians endeavoring to keep the family unit intact. However, many of these current shelters are in fact modified and non-ADA compliant residential structures, and continued maintenance has become an expensive burden upon the agency's operating budget. Many of these structures are also located in quiet communities, such as Mānoa, and their operation has all too frequently incurred the indignation and wrath of neighbors who resent the intrusions.

Consolidation of residential shelters in a campus setting will provide both a sense of security for at-risk youth and a buffer zone for nearby residents, and have the added benefit of alleviating several potential sources of friction otherwise caused by a facility's close proximity to other inhabited structures in quiet neighborhoods of urban Honolulu. The strategic relocation and consolidation to 'Ewa of programs and personnel from 14 separate O'ahu facilities will provide Hale Kipa a more efficient and effective operation; facilitate easier access to facilities by clients, family members, agency staff and other visitors; and allow the executive administration and staff to immediately and efficiently sustain key program services and obligations throughout O'ahu and the State of Hawai'i.

Further, Hale Kipa will seek compliance with the U.S. Green Building Council's "Leadership in Energy and Environmental Design" (LEED) specifications for "New Construction and Renovations" (NC) to ensure that the project will result in a "green" facility. LEED / NC-certified buildings and facilities are noted for sustainability and harmony with the surrounding environment. Such developments enjoy significantly lower operating costs, reduce the amount of waste that is sent to area landfills, conserve natural resources, and enhance the health and productivity of its occupants. Contingent upon funding, Hale Kipa's current building plans address USBGC requirements for sustainable site development, water efficiency, energy and atmosphere, materials and resources, indoor environmental quality, and design innovation.

3. State the public purpose and need to be served.

Hale Kipa is an integral part of the social safety net for youth in the State of Hawai'i. Because Hale Kipa does not charge its clients for services, the agency depends upon both government and private sources for its funding. Construction of the Complex will enable the agency to more effectively and efficiently meet the many diverse needs of at-risk youth in one on-site location, by consolidating the agency's operations in close proximity to a rapidly growing service area in west O'ahu, and allowing the administration to more immediately and efficiently sustain key program services and obligations.

By housing residents on a large and self-contained campus, rather than scattering them piecemeal throughout the community, Hale Kipa will alleviate the prospect of continued friction with its shelters' immediate neighbors. Shelter residents will in many instances also be closer to home, and its convenient location in 'Ewa will enable families to more readily visit shelter facilities, an intangible but valuable aid in the reconciliation process.

The school will also help Hale Kipa be more effective in continuing the youths' education while receiving treatment. Further, the youth themselves will be able to continue their education in a formal classroom setting, which will prepare them for school in their respective communities upon their

transition from shelter to a home environment. And the Complex's conference rooms will be made available to the general public for community meetings.

4. Describe the target population to be served;

Hale Kipa has already made a profound difference in over 40,000 lives since its 1970 founding, and annually services about 3,500 at-risk youth whose lives have reached the point of dysfunction. The agency's clientele includes runaway and throwaway children, status offenders, pregnant teens, youthful offenders under court supervision, and youth served by the Department of Health's Child and Adolescent Mental Health Division, among others. Further, it should be noted that while children of native Hawaiian descent account for approximately 22% of public school enrollment, they comprise over 40% of clientele enrolled in Hale Kipa's base programs.

5. Describe the geographic coverage.

Because Hale Kipa's services provided to west O'ahu communities has grown proportionally with the region's rise in population, the Hale Kipa Services Center, Residential Shelters & Educational Facility Complex will be located on Old Fort Weaver Road in 'Ewa. However, the agency has and will continue to effectively provide services and shelter to at-risk youth on a statewide basis.

II. Service Summary and Outcomes

The Service Summary shall include a detailed discussion of the applicant's approach to the request. The applicant shall clearly and concisely specify the results or outcomes from this request.

1. Describe the scope of work, tasks and responsibilities.

Development of the Hale Kipa Services Center, Residential Shelters & Educational Facility Complex will include its 12,600-sq. ft. community services center, three 2,450 square foot residential shelters and a 4,000 sq. ft. educational facility, with additional plans for expansion of the educational facility and up to three residential shelters.. Hale Kipa holds title in fee to a 4.26-acre site for this specific purpose, which will provide the agency an ideal location from which youth and families can better be served. Hale Kipa will also seek to comply with the U.S. Green Building Council's "Leadership in Energy and Environmental Design" (LEED) specifications for "New Construction and Renovations" (NC) to ensure that the project will result in a "green" facility.

Findings from its April 15, 2009 feasibility study support both the rationale for the development and its prospects for success, and Hale Kipa anticipates breaking ground by September 2011. The development process will be tracked on a weekly, monthly and quarterly basis, and also at the completion of a particular phase of the contract. The Board of Directors – a roster of which is also attached – will receive regular reports from both the CEO and Project Manager.

Total estimated costs of the Hale Kipa Services Center, Residential Shelters & Educational Facility Complex are budgeted at \$20 million. Development will proceed in an orderly fashion and will include:

- Initial site work and the installation of all necessary utilities, and initial landscaping;
- Procurement of all necessary permits and payment of fees;

- Old Fort Weaver Road roadway improvements required by the City & County of Honolulu in the Conditional Use Permit (CUP) process
- Construction of three residential shelters, walkways and recreational facilities;
- Construction of the Hale Kipa services center, educational facility, driveways and parking areas;
- Procurement of furniture, fixtures and equipment for the entire facility;
- Payment of all necessary administrative, project management, loan, tax and contingency costs.

Hale Kipa is also currently engaged in preliminary discussions with potential collaborative partners, including the Kamehameha Schools and Office of Hawaiian Affairs (OHA), regarding the proposed development on its 'Ewa property of a fully-licensed and credentialed educational facility for at-risk youth residing in Hale Kipa's shelters and/or enrolled in its programs.

2. The applicant shall provide a projected annual timeline for accomplishing the results or outcomes of the service.

Please see **Attachment No. 2**, "*Hale Kipa Services Center Project Timeline*." As is shown therein, Schematic Design is underway with associated budget estimates. This schedule projects Foundation Permits issued by the end of 2009 and the Building Permit issued in June 2010. These were target dates, however with State monies lapsing and conditions required from USDA had postponed construction. Hale Kipa will update this schedule once the USDA conditions have been met.

3. The applicant shall describe its quality assurance and evaluation plans for the request. Specify how the applicant plans to monitor, evaluate, and improve their results; and

The development process will be tracked on a weekly, monthly and quarterly basis, and also at the completion of each designated phase of the contract. The Project Manager will be responsible for the oversight of all development-related processes – which will include contract procurement, timelines, and cost and fiscal management – and will work with the architect and lender to ensure that the project will be completed in a timely manner and according to prior specifications. The Project Manager will be overseen by the CEO, and any material deviations from specifications and schedules will be reported to and approved by the CEO, who is accountable to the Board of Directors.

4. The applicant shall list the measure(s) of effectiveness that will be reported to the State agency through which grant funds are appropriated (the expending agency). The measure(s) will provide a standard and objective way for the State to assess the program's achievement or accomplishment. Please note that if the level of appropriation differs from the amount included in this application that the measure(s) of effectiveness will need to be updated and transmitted to the expending agency.

Hale Kipa anticipated breaking ground for the new facilities by the end of the 2009 calendar year. As stated earlier in Section I.1, approval of said funds requested by Hale Kipa would amount to a re-authorization of monies appropriated previously by the Legislature in Section 5 of Act 160, Session Laws of Hawaii 2006. With the development's planning and design stages nearing completion, and the necessary permits being secured, the requested \$1,500,000 in GIA funds will allow Hale Kipa to successfully complete its leverage of funds from the U.S. Department. of Agriculture which have already been provisionally approved for the agency, pending the availability of said funds.

Once completed, the Hale Kipa Services Center, Residential Shelters & Educational Facility Complex will reduce the agency’s occupancy costs relative to its total budget, stabilize overall costs of agency services, and direct more contract funding to client-based programs rather than administrative operations. Further, Hale Kipa will more effectively and efficiently meet the many diverse needs of at-risk youth at one strategically-located site of operations, consolidate agency programs in close proximity to a rapidly growing service area in west O’ahu, and effectively sustain key services and obligations from a centralized administrative locale.

III. Financial

Budget

- 1. The applicant shall submit a budget utilizing the enclosed budget forms as applicable, to detail the cost of the request.**

Please see attached budget forms, pages 10-13.

- 2. The applicant shall provide its anticipated quarterly funding requirements for the fiscal year 2011-2012.**

Q1 FY 2011-12: July 1 – Sept 30, 2011	Q2 FY 2011-12: Oct 1 – Dec 31, 2011	Q3 FY 2011-12: Jan 1 – Mar 31, 2012	Q4 FY 2011-12: Apr 1 – June 30, 2012	FY 2011-12: Amount of Grant to be Expended
\$500,000	\$500,000	\$250,000	\$250,000	\$1,500,000

- 3. The applicant shall provide a listing of all other sources of funding that they are trying to obtain for fiscal year 2011-2012.**

<u>Agency or Foundation</u>	<u>Amount to Be Requested **</u>
City & County of Honolulu – CDBG funds	\$ 850,000
U.S. Department of Agriculture	12,000,000

** Please note that figures provided are extremely preliminary, and actual amounts to be requested will depend in large part upon the information provided in all ensuing requests for proposals (RFP) issued by private foundations and state / local government, and in notices of funding availability (NOFA) from relevant federal agencies.

IV. Experience and Capability

A. Necessary Skills and Experience

The applicant shall demonstrate that it has the necessary skills, abilities, knowledge of, and experience relating to the request. State your experience and appropriateness for providing the service proposed in this application. The applicant shall also provide a listing of verifiable experience of related projects or contracts for the most recent three years that are pertinent to the request.

Hale Kipa has for over 40 years successfully met the needs of at-risk youth, with a solid reputation and track record for achievement. Hale Kipa's administration also brings years of knowledge and experience to the project. Please see "Section III – Proposed Staffing and Organization" for further details on the individuals who will bear the responsibility for bringing the project to fruition.

B. Quality Assurance and Evaluation

The applicant shall describe its quality assurance and evaluation plans for the request. Specify how the applicant plans to monitor, evaluate and improve their results.

The development process will be tracked on a weekly, monthly and quarterly basis, and also at the completion of each particular phase of the contract. The Project Manager will be responsible for the oversight of all development-related processes – which will include contract procurement, timelines, and cost and fiscal management – and will work with the architect and lender to ensure that the project will be completed in a timely manner and according to prior specifications. The Project Manager reports to the CEO, and any material deviations from specifications and schedules will be reported to and approved by the CEO, who in turn is accountable to the Board of Directors.

C. Facilities

The applicant shall provide a description of its facilities and demonstrate its adequacy in relation to the request. If facilities are not presently available, describe plans to secure facilities. Also describe how the facilities meet ADA requirements, as applicable.

The ADA-compliant Hale Kipa Services Center, Residential Shelters & Educational Facility Complex will be a multi-purpose facility, and will house conference rooms, training facilities, classrooms and file storage. Administrative and clerical staff currently spread across O'ahu in 14 different sites will be consolidated in the Services Center. The Services Center's conference rooms will be made available to the general public for community meetings. Each ADA-compliant residential shelter will initially house youth from the State of Hawaii, Department of Health – Child and Adolescent Mental Health Division, and will also be used for placing youth needing emergency shelter services referred by the State of Hawaii, Department of Human Services. The ADA-compliant and fully-accredited educational facility will allow Hale Kipa youth displaced from their

daily routine by circumstances to continue their education in a formal classroom setting, pending their transition back to a stable home and school environment.

V. Personnel: Project Organization and Staffing

A. Proposed Staffing, Staff Qualifications, Supervision and Training

The applicant shall describe the proposed staffing pattern and proposed service capacity appropriate for the viability of the request. The applicant shall provide the qualifications and experience of personnel for the request and shall describe its ability to supervise, train and provide administrative direction relative to the request.

President and Chief Executive Officer is **Ernest “Punky” M. Pletan-Cross**, who founded a multi-service adolescent and family counseling agency, LUK, Inc., in Fitchburg, Massachusetts in 1970, where he served as chief executive officer until joining Hale Kipa in 1998. Mr. Pletan-Cross also held an adjunct faculty position at Fitchburg State College, where he taught classes in human services, juvenile justice, and crisis intervention, among others. He is a nationally recognized expert in his field, and has conducted numerous workshops covering a wide range of management and clinical topics. During his tenure at Hale Kipa, Mr. Pletan-Cross has overseen an unprecedented period of growth for the agency, which includes an expansion of its foster care services, and implementation of several important new programs that target the needs of homeless and other at-risk youth.

Tracy Janowicz, serves as Hale Kipa's Director of Quality Improvement & Facilities. She has been with Hale Kipa since 2001, and has developed and implemented a continuous quality improvement model for the agency, along with overseeing all Hale Kipa physical properties statewide. She currently serves as the staff liaison to the USDA and staffs Hale Kipa's Capital Campaign Cabinet. In addition she is assigned to working with the Armand A. Cote, Project Manager for the building of the Complex.

Armand A. Cote of AAC & Associates, Inc. is the Project Manager for the Hale Kipa Services Center, Residential Shelters & Educational Facility Complex complex. A civil engineer by training, Mr. Cote served as Outrigger Hotels' representative during the recent \$250 million Waikiki Beachwalk improvement project, and successfully oversaw the development of the \$150 million Kahala Nui senior living community, the \$130 million Hokua Condominium project, and a \$11.5 million research facility on Kaua'i.

Fiduciary oversight of all project activities is the purview of the Board of Directors and Chief Executive Officer. In addition, past Board members who continue to volunteer with this project include **Chris Deuchar**, President of U.S. Pacific Development, LLC, served as chair of Property Committee during the purchase and design phase of the project, and brings a wealth of knowledge and experience in real estate development. **Luis Salaveria** is the property group finance manager for Kaiser Permanente Health System in Hawai'i. **Phil Gray** is a developer and past Property Committee chair who also brings a wealth of knowledge and experience in real estate development.

Please see **Attachment No. 3**, "*Hale Kipa Board of Directors, 2011*," and **Attachment No. 4**, "*Hale Kipa Campaign Cabinet*."

B. Organization Chart

The applicant shall illustrate the position of each staff and line of responsibility/supervision. If the request is part of a large, multi-purpose organization, include an organizational chart that illustrates the placement of this request.

Please see **Attachment No. 5**, "*Hale Kipa Organization Chart*."

VI. Other

A. Litigation

The applicant shall disclose any pending litigation to which they are a party, including the disclosure of any outstanding judgement. If applicable, please explain.

None

B. Licensure or Accreditation

Specify any special qualifications, including but not limited to licensure or accreditation that applicant possesses relevant to this request.

Hale Kipa is fully accredited by the Council of Accreditation, and its facilities are similarly licensed and accredited by the appropriate federal, state and professional agencies to ensure that its operations will continue to conform with high administrative, fiscal and program standards.

ATTACHMENTS:

- (1) Hale Kipa Roster of Programs and Services
- (2) Hale Kipa Services Center, Residential Shelters & Educational Facility Complex Project Timeline
- (3) Hale Kipa Board of Directors, 2011
- (4) Hale Kipa Campaign Cabinet, 2011
- (5) Hale Kipa Organization Charts – Administrative Services & Programs
- (6) Internal Revenue Service – Tax Exempt Determination Letter
- (7) State of Hawaii, DCCA – Letter of Good Standing

BUDGET REQUEST BY SOURCE OF FUNDS
Period: FY 2012 (July 1, 2011 to June 30, 2012)

Applicant: HALE KIPA, Inc.

BUDGET CATEGORIES	Total State Funds Requested (a)	State GIA Funds Act 180, SLH 10 (b)	Funds Rec'd Other Sources (c)	Prospective Fundraising (d)
A. PERSONNEL COST				
1. Salaries				
2. Payroll Taxes & Assessments				
3. Fringe Benefits				
TOTAL PERSONNEL COST				
B. OTHER CURRENT EXPENSES				
1. Airfare, Inter-Island				
2. Insurance				
3. Lease/Rental of Equipment				
4. Lease/Rental of Space				
5. Staff Training				
6. Supplies				
7. Telecommunication				
8. Utilities				
9. Property Purchase in Fee ('Ewa)			1,254,000	
10. Planning, Design & Construction	1,500,000	500,000	402,588	12,364,912
11. Permits & Fees				550,000
12. Equip, Furnish & Contingency				3,428,500
13				
14				
15				
16				
17				
18				
19				
20				
TOTAL OTHER CURRENT EXPENSES	1,500,000	500,000	1,656,588	16,343,412
C. EQUIPMENT PURCHASES				
D. MOTOR VEHICLE PURCHASES				
E. OTHER				
TOTAL (A+B+C+D+E)	1,500,000	500,000	1,656,588	16,343,412
SOURCES OF FUNDING		Budget Prepared By:		
(a) Total State Funds Requested	1,500,000	Tracy Janowicz, Facilities Dir. 589-1829 x 111		
(b) State GIA (Act 180, SLH 2010)	500,000	Name: [REDACTED] Phone		
(c) Funds from Other Sources	13,656,588	Date: Jan. 28, 2011		
(d) Prospective Fundraising	4,343,412	Signature of Authorized Official		
TOTAL BUDGET	20,000,000	Ernest Pletan-Cross, C.E.O. Name and Title (Please type or print)		

BUDGET JUSTIFICATION PERSONNEL - SALARIES AND WAGES

Applicant: HALE KIPA, Inc.

Period: July 1, 2011 to June 30, 2012

POSITION TITLE	FULL TIME EQUIVALENT	ANNUAL SALARY A	% OF TIME ALLOCATED TO GRANT REQUEST B	TOTAL STATE FUNDS REQUESTED (A x B)
				\$ -
NOT APPLICABLE.				\$ -
				\$ -
				\$ -
				\$ -
				\$ -
				\$ -
				\$ -
				\$ -
				\$ -
				\$ -
				\$ -
				\$ -
				\$ -
				\$ -
				\$ -
				\$ -
				\$ -
TOTAL:				\$ -
JUSTIFICATION / COMMENTS:				

BUDGET JUSTIFICATION - EQUIPMENT AND MOTOR VEHICLES

Applicant: HALE KIPA, Inc.

Period: July 1, 2011 to June 30, 2012

DESCRIPTION EQUIPMENT	NO. OF ITEMS	COST PER ITEM	TOTAL COST	TOTAL BUDGETED
			\$ -	
NOT APPLICABLE.			\$ -	
			\$ -	
			\$ -	
			\$ -	
TOTAL:			\$ -	
JUSTIFICATION/COMMENTS:				

DESCRIPTION OF MOTOR VEHICLE	NO. OF VEHICLES	COST PER VEHICLE	TOTAL COST	TOTAL BUDGETED
			\$ -	
NOT APPLICABLE.			\$ -	
			\$ -	
			\$ -	
			\$ -	
TOTAL:			\$ -	
JUSTIFICATION / COMMENTS:				

**BUDGET JUSTIFICATION
CAPITAL PROJECT DETAILS**

Applicant: HALE KIPA, Inc.

Period: FY 2012 (July 1, 2011 to June 30, 2012)

FUNDING AMOUNT REQUESTED						
TOTAL PROJECT COST	ALL SOURCES OF FUNDS RECEIVED IN PRIOR YEARS		STATE FUNDS REQUESTED	OF FUNDS REQUESTED	FUNDING REQUIRED IN SUCCEEDING YEARS	
	FY: 2008-2009	FY: 2009-2010	FY:2011-2012	FY:2011-2012	FY:2012-2013	FY:2013-2014
PLANS, DESIGN & CONSTRUCTION		500000	1500000	402588	12364912	
LAND ACQUISITION	1254000					
PERMITS AND FEES				550000		
EQUIPMENT AND FURNISHINGS					3428500	
TOTAL:	1254000	500000	1,500,000	952,588	15,793,412	
JUSTIFICATION / COMMENTS:						

**DECLARATION STATEMENT
APPLICANTS FOR GRANTS AND SUBSIDIES
CHAPTER 42F, HAWAII REVISIED STATUTES**

The undersigned authorized representative of the applicant acknowledges that said applicant meets and will comply with all of the following standards for the award of grants and subsidies pursuant to section 42F-103, Hawaii Revised Statutes:

- (1) Is licensed or accredited, in accordance with federal, state, or county statutes, rules, or ordinances, to conduct the activities or provide the services for which a grant or subsidy is awarded;
- (2) Comply with all applicable federal and state laws prohibiting discrimination against any person on the basis of race, color, national origin, religion, creed, sex, age, sexual orientation, or disability;
- (3) Agree not to use state funds for entertainment or lobbying activities; and
- (4) Allow the state agency to which funds for the grant or subsidy were appropriated for expenditure, legislative committees and their staff, and the auditor full access to their records, reports, files, and other related documents and information for purposes of monitoring, measuring the effectiveness, and ensuring the proper expenditure of the grant or subsidy.

In addition, a grant or subsidy may be made to an organization only if the organization:

- (1) Is incorporated under the laws of the State; and
- (2) Has bylaws or policies that describe the manner in which the activities or services for which a grant or subsidy is awarded shall be conducted or provided.

Further, a grant or subsidy may be awarded to a non-profit organization only if the organization:

- (1) Has been determined and designated to be a non-profit organization by the Internal Revenue Service; and
- (2) Has a governing board whose members have no material conflict of interest and serve without compensation.

For a grant or subsidy used for the acquisition of land, when the organization discontinues the activities or services on the land acquired for which the grant or subsidy was awarded and disposes of the land in fee simple or by lease, the organization shall negotiate with the expending agency for a lump sum or installment repayment to the State of the amount of the grant or subsidy used for the acquisition of the land.

Further, the undersigned authorized representative certifies that this statement is true and correct to the best of the applicant's knowledge.

Hale Kipa, Inc.

(Typed Name of Individual or Organization)



(Signature)

1/28/2011
(Date)

Ernest Pletan-Cross, Chief Executive Officer

(Typed Name)

(Title)



Roster of Programs and Services

Community-based Outreach and Advocacy Program (CBOA): Outreach program focused on providing case management and community linkages for youth to prevent initial or further involvement with child welfare or juvenile justice.

Emergency Shelter and Sanctuary: Offers emergency shelter, support, protection and a structured environment to homeless, runaway, abused and neglected youth between 12 and 17 years of age at two group homes in 'Ewa for who are in need of support, protection, and a structured environment, and coordinates with the **Kamala Home Program** to provide emergency foster home placement services for abused and / or neglected youth between 10 and 17 years of age.

Evening Counseling Program: Diversion program that provides counseling and linkages to community resources for youth who have been arrested.

Foster Homes Program: Offers short-term (**Hānai**), longer term placements with individual and family therapy (**Therapeutic Foster Homes**).

Hapai Homes: Offers specialized transitional residences for pregnant and parenting teens.

Hawai'i Advocate Program: Statewide program that provides strength-based, wrap-around services to youth and families to prevent out-of-home placement, and assists the re-integration of previously incarcerated youth into the community upon their release from the Hawai'i Youth Correctional Facility (HYCF).

Ho'okala-Attendant Care Program: Provides diversion (intake and assessment) for youthful status offenders and non-violent lawbreakers, with 24-hour access to immediate crisis intervention and attendant care.

Hui Mālama 'Ohana Youth Service Center: Program that serves youth in two middle schools with positive alternative activities, outreach, pregnancy prevention and family strengthening services.

Independent Living Program (ILP): Provides specific outreach and skill building services for youth transitioning out of foster care into adulthood. Program also has two residential options for youth transitioning out of foster care or HYCF.

Intensive-In Home Services: Provides clinical therapy and services to families and youth in their homes, with the goal of strengthening families.

Sexual Exploitation Prevention Program: Interactive video presentation delivered to schools and community groups to inform and teach youth to identify, avoid and prevent sexual exploitation.

Transitional Living Program (TLP): Residential services for youth and young adults transitioning out of homelessness.

Therapeutic Group Homes: Range of group homes that serve youth upon referral from the Hawai'i Dept. of Health – Child and Adolescent Mental Health Division, which includes emergency crisis placement and independent living options.

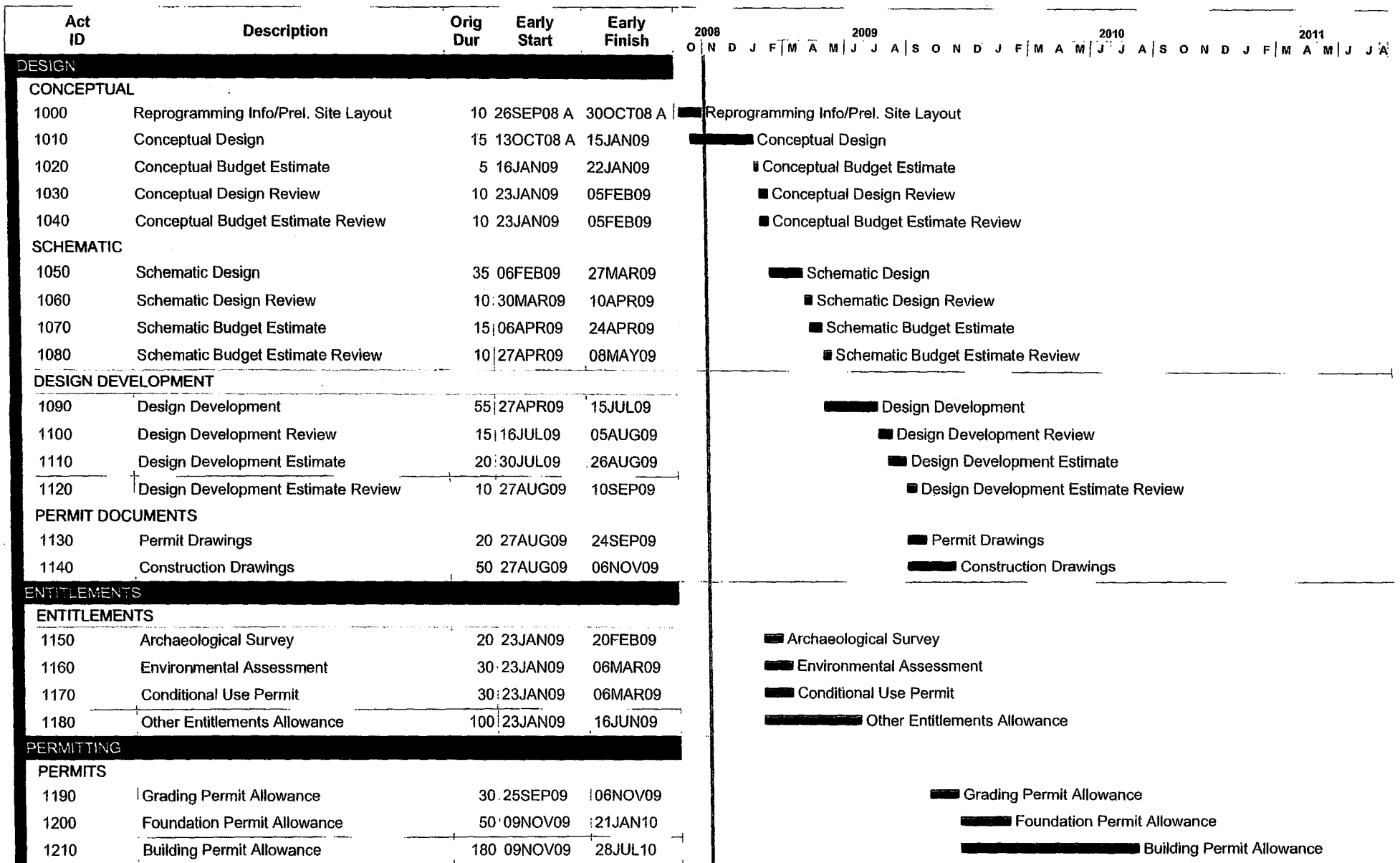
Valid Court Order: Advocacy program for youth who violate court orders.

Youth Outreach (YO!): Collaborative program with Waikiki Health Center that provides street outreach, drop-in, and health care services to homeless and street youth in Waikiki. Program outreach workers also maintain a presence in Windward and Leeward O'ahu, and provide a drop-in center in Wai'anae.

*Over 3500 youth were served in some capacity last year.

*Services are delivered 24/7 in Residential and Outreach programs.

*Services delivered in Residential and Foster Care programs and most communities throughout the State.



Start date 26SEP08
 Finish date 28JUL10
 Data date 04NOV08
 Run date 19JAN09
 Page number 1A
 Project name HK 001
 © Primavera Systems, Inc.

HALE KIPA SERVICE CENTER
 PLANNING SCHEDULE
 JANUARY 19, 2009

- Early bar
- Progress bar
- Critical bar
- Summary bar
- ◆ Start milestone point
- ◆ Finish milestone point



Board of Directors

Luke W. T. Yeh | Sr. Vice President, Bank of Hawaii
Chair

Heidi K. Wild | President, Wild Consulting, LLC.
Vice Chair

Greg J. Sitar | Senior VP & Branch Manager, First Hawaiian Bank
Treasurer

Lianne Iwanaga-Ohashi | Information Specialist III, Department of Education
Secretary

Stacy Evensen | Vice President, Integrated Services, Inc.
Past Chair

Paul Schraff | Partner, Dwyer Schraff Meyer Grant & Green
Chair

Brian Isobe | Principal, N & K CPAs, Inc.
Past Chair

Heidi A. Cregor | Financial Advisor, Tax Strategies
Past Chair

Zadoc Brown, Jr. | VP/Investments & Branch Manager, Stifel, Nicolaus & Company, Incorporated
Neighbor Island Liaison

Galen K. Haneda | Vice President – Business Sales, Hawaiian Telcom

Andrew Levin | Retired
Neighbor Island Liaison

Scott W.H. Seu | Vice President, Energy Resources, Hawaiian Electric Company, Inc.

Rona M. Suzuki | Sales Manager, Century Computers, Inc.

Dianne Willoughby | Economist



Hale Kipa Capital Campaign Cabinet

Jeannie Hedberg | Partner, Hedberg Batara & Vaughan-Sarandi, LLC
Chair

Chris Benjamin | Sr. Vice Pres. & CFO, Alexander & Baldwin, Inc.
Vice Chair

Momi Cazimero | Proprietor, Graphic house
Vice Chair

Pip White | Architect, Phillip White Architects
Vice Chair

John K.S. Aeto | President, Hiki No Consulting
Vice Chair

Rick Ching | President, Servco Automotive

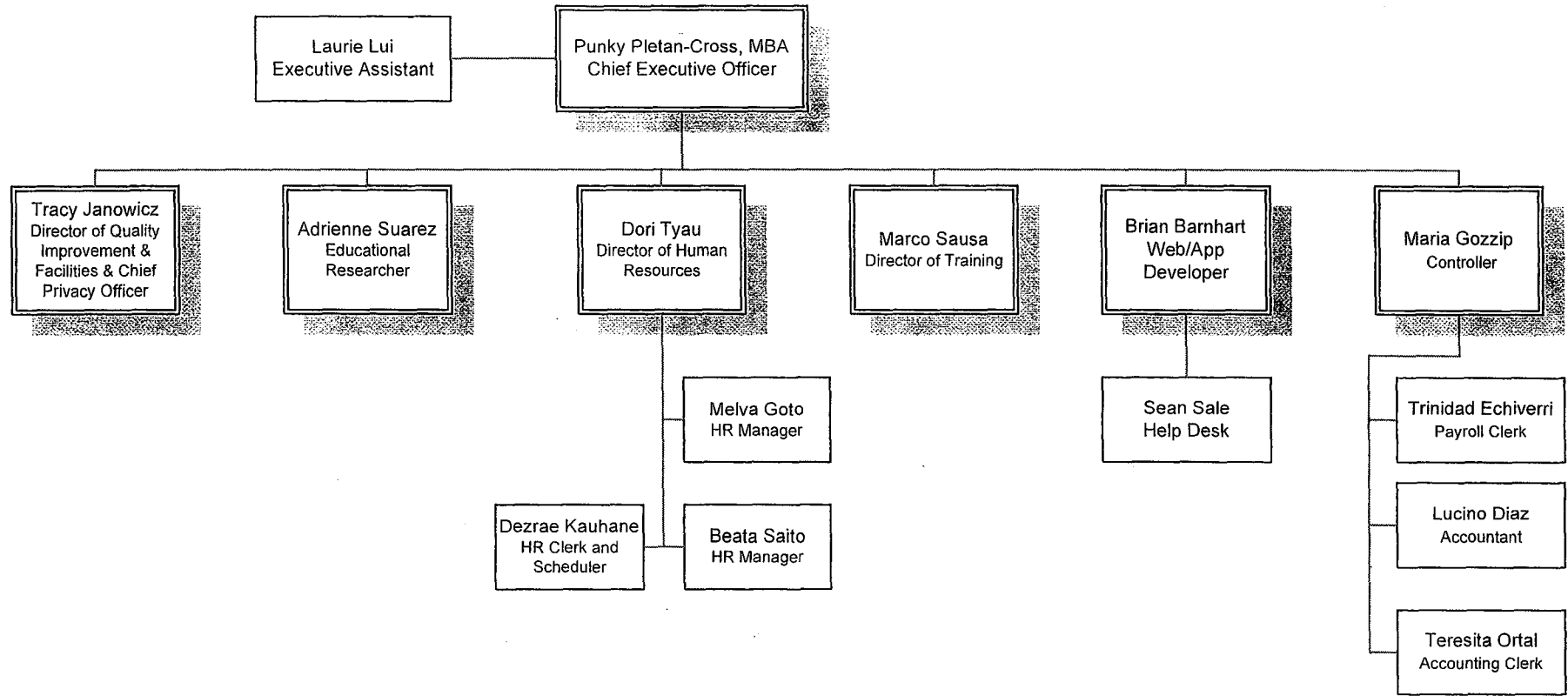
Heidi A. Cregor | Financial Advisor, Tax Strategies

Stacy Evensen | Vice President, Integrated Services, Inc.

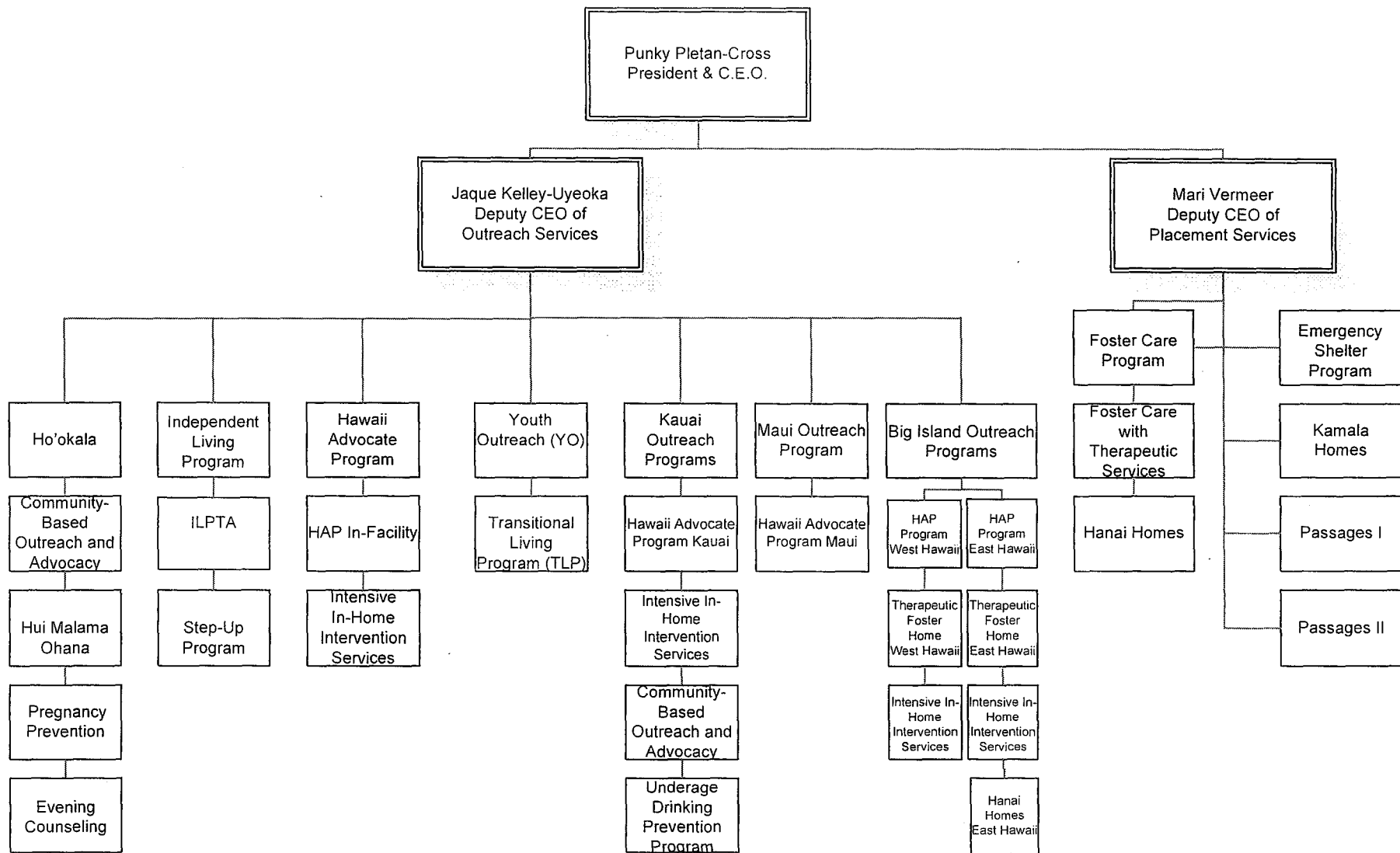
Mike Kido | The Pacific Resource Partnership

Richard Reese | President, Richard Reese Designs

Luke W.T. Yeh | Senior Vice President, Bank of Hawaii



Administrative Services



Hale Kipa, Inc.
Program Organizational Chart

Internal Revenue Service

**Department of the Treasury
P. O. Box 2508
Cincinnati, OH 45201**

Date: October 23, 2006

HALE KIPA INC
615 PIIKOI ST STE 203
HONOLULU HI 96814-3139

Person to Contact:
Ms. Lumpkins 31-08344
Customer Service Representative
Toll Free Telephone Number:
877-829-5500
Federal Identification Number:
23-7061499

Dear Madam:

This is in response to your request of October 23, 2006, regarding your organization's tax-exempt status.

In June 1970 we issued a determination letter that recognized your organization as exempt from federal income tax. Our records indicate that your organization is currently exempt under section 501(c)(3) of the Internal Revenue Code.

Our records indicate that your organization is also classified as a public charity under sections 509(a)(1) and 170(b)(1)(A)(vi) of the Internal Revenue Code.

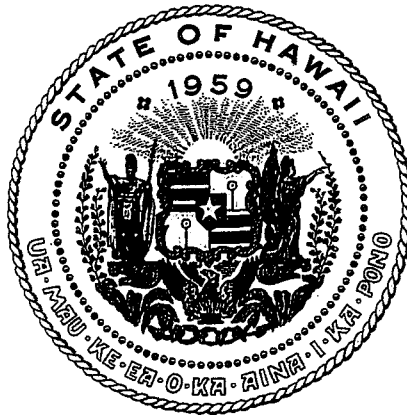
Our records indicate that contributions to your organization are deductible under section 170 of the Code, and that you are qualified to receive tax deductible bequests, devises, transfers or gifts under section 2055, 2106 or 2522 of the Internal Revenue Code.

If you have any questions, please call us at the telephone number shown in the heading of this letter.

Sincerely,



Janna K. Skufca, Director, TE/GE
Customer Account Services



Department of Commerce and Consumer Affairs

CERTIFICATE OF GOOD STANDING

I, the undersigned Director of Commerce and Consumer Affairs of the State of Hawaii, do hereby certify that

HALE KIPA, INC.

was incorporated under the laws of Hawaii on 01/26/1970 ; that it is an existing nonprofit corporation; and that, as far as the records of this Department reveal, has complied with all of the provisions of the Hawaii Nonprofit Corporations Act, regulating domestic nonprofit corporations.

IN WITNESS WHEREOF, I have hereunto set my hand and affixed the seal of the Department of Commerce and Consumer Affairs, at Honolulu, Hawaii.

Dated: December 03, 2009



Director of Commerce and Consumer Affairs

