

House District _____

Senate District _____

**THE TWENTY- FOURTH LEGISLATURE
HAWAI'I STATE LEGISLATURE
APPLICATION FOR GRANTS & SUBSIDIES
CHAPTER 42F, HAWAI'I REVISED STATUTES**

Log No: 168-0

For Legislature's Use Only

Type of Grant or Subsidy Request:

- GRANT REQUEST – OPERATING
- GRANT REQUEST – CAPITAL
- SUBSIDY REQUEST

"Grant" means an award of state funds by the legislature, by an appropriation to a specified recipient, to support the activities of the recipient and permit the community to benefit from those activities.

"Subsidy" means an award of state funds by the legislature, by an appropriation to a recipient specified in the appropriation, to reduce the costs incurred by the organization or individual in providing a service available to some or all members of the public.

"Recipient" means any organization or person receiving a grant or subsidy.

STATE DEPARTMENT OR AGENCY RELATED TO THIS REQUEST (LEAVE BLANK IF UNKNOWN): _____

STATE PROGRAM I.D. NO. (LEAVE BLANK IF UNKNOWN): _____

1. APPLICANT INFORMATION:

Legal Name of Requesting Organization or Individual:
Malama Kauai

Db:

same

Street Address: 4900 Kuawa Rd, Kilauea HI. 96754

Mailing Address:

same

2. CONTACT PERSON FOR MATTERS INVOLVING THIS APPLICATION:

Name GLENN HONTZ & GARY SEALS

Title Project Directors

Phone # 808-742-7820 808-651-7732

Fax # 808-440-0017

e-mail hontz@hawaii.edu gary@malamakauai.org

3. TYPE OF BUSINESS ENTITY:

- NON PROFIT CORPORATION
- FOR PROFIT CORPORATION
- LIMITED LIABILITY COMPANY
- SOLE PROPRIETORSHIP/INDIVIDUAL

4. FEDERAL TAX ID #: _____

5. STATE TAX ID #: _____

6. SSN (IF AN INDIVIDUAL): _____

7. DESCRIPTIVE TITLE OF APPLICANT'S REQUEST:

DEVELOPING A FOOD SECURITY PROGRAM FOR KAUAI WITH A NETWORK OF COMMUNITY GARDENS AND FARMS

8. FISCAL YEARS AND AMOUNT OF STATE FUNDS REQUESTED:

FY 2008-2009 \$ 249,920.00

9. STATUS OF SERVICE DESCRIBED IN THIS REQUEST:

- NEW SERVICE (PRESENTLY DOES NOT EXIST)
- EXISTING SERVICE (PRESENTLY IN OPERATION)

SPECIFY THE AMOUNT BY SOURCES OF FUNDS AVAILABLE AT THE TIME OF THIS REQUEST:

STATE \$ _____

FEDERAL \$ _____

COUNTY \$ _____

PRIVATE/OTHER \$ _____

TYPE NAME & TITLE OF AUTHORIZED REPRESENTATIVE:



GARY SEALS, DIRECTOR, MALAMA KAUAI
NAME & TITLE

JANUARY 22, 2008
DATE SIGNED

Developing a Food Security Program for Kauai With a Network of Community Gardens and Farms

I. Background and Summary

1. Description of applicant's background

The following proposal is an initiative developed by Malama Kauai a 501C3 organization based in Kilauea and dedicated to increasing food self-sufficiency for the island of Kauai. Glenn Hontz of Kauai Community College and Gary Seals of Malama Kauai have teamed up to serve as Co-directors on this project. The funds requested in this proposal will be received, distributed and managed in all aspects by Malama Kauai. Malama Kauai has distinguished itself as an organization that is dedicated to developing sustainable solutions for the array of problems that are facing Kauai. This new initiative addresses the problem of food security and is set to be further developed in cooperation with the Kauai Food Industry Forum and a coordinating council. The Forum is a community based organization that is promoting the development of food self-sufficiency for Kauai. The current Coordinating Council is being expanded to include a broader representative membership of educators, business entrepreneurs, farmers, attorneys, soil experts and key members of the community. The Council will provide administrative support and guidance for this project as it expands island-wide in its goals to address the issue of food security and the challenges of creating food self-sufficiency for the island of Kauai. (Further details regarding these two organizations and the administrative role of the Council will be provided in Section IV of this proposal.)

Glenn Hontz is a faculty member at Kauai Community College and Kauai's staff member on the Statewide Education, Training and Agribusiness Development Project funded by USDA through the University of Hawaii, College of Tropical Agriculture and Human Resources. He earned his Masters and Doctors degrees from Columbia University, and has served as a professor and program administrator at several universities, including University of Hawaii. He is trained and experienced in grant development, business planning and program management. He has a successful background in the areas of advertising, business development, management consulting and city planning.

Gary D. Seals, a member of the Malama Kauai Board of Directors, is a sustainability facilitator. He works to ensure vitality in all that he does: at home, on the farm and throughout the world. Incorporating practical building principles along with visionary passion, his work produces tangible results based in co-operative methods and models. Gary has a diverse background in geology, solar design, installation, forest restoration and project management. He has a life long dedication toward regenerative projects. Having studied at UC Davis, and worked in education and program development on local and national levels, he continues to cultivate a rapidly expanding market place supporting sustainable communities.

(Please refer to the resumes for Hontz and Seals in Section IV of this document.)

2. Goals and objectives related to this request

Malama Kauai has developed this proposal as a pro-active initiative that will create an island-wide network of gardens, farms and food distribution programs. This network will foster the development of food self-sufficiency by increasing levels of food production and distribution to families and commercial outlets throughout Kauai. By creating a curriculum based on our existing pilot program, organizing a council of willing individuals to steer this expansion, building a team of experts to advise the in ground actions, gather district leaders and provide marketing tools that connect the communities to the project we will educate and spread locally grown food throughout the island of Kauai. The goals of the project are as follows:

- A. To continue the development of Malama Kauai's Farm Incubator Program and a Community Supported Agriculture (CSA) system as a primary training and food distribution module that will establish food self-sufficiency for the island of Kauai and further a financially independent system.
- B. To increase the management capacity of our existing Coordinating Council in developing community-level leadership, in building the organizational structure needed to support the project and in providing the essential support to the Districts.
- C. To assemble a Technical Support Team comprised of our island's farming professionals and food industry consultants that will provide the training, technical assistance and basic resources essential for the successful growth of this project leading to its financial independence.
- D. To expand this growing network of small farms and community gardens throughout the principal regions of Kauai.
- E. To develop the tools and methods that will foster the growth of a vertically-integrated and cooperative food production and marketing system that will best serve the island.

3. The public purpose and need to be served

The island of Kauai is heavily dependent on imported food. It is estimated that 80-90% of the island's food supply is imported. As the "oil crisis" continues to increase, it is predicted that the availability of imported food will decline and the cost will skyrocket. This situation is already contributing to the rising cost of living and producing an out-migration of workers thereby threatening the stability of the island's vital services. Fortunately in terms of its potential for achieving food security, Kauai has an abundance of agriculture land. At present, however, the major agricultural enterprises --- such as sugar, cattle, coffee, seed, etc. --- are intended for export and thus contribute very little to the local food supply. Although careers in food farming are appealing to many residents, the pathway to such careers has been challenging due to the cost of land, the high expense of soil restoration, and a lack of available training programs and on-going technical support. If allowed to continue unaltered, these various factors will combine to

create a food crisis that will result in economic and social chaos. This project effectively addresses the food security problem with an approach that combines the resources of the island and applies them to a solution that is already gathering strong public support. Food is clearly a basic need. It is obvious that if Kauai cannot feed itself then its cherished goal of sustainability will never be achieved. The purpose of this proposal is to reverse our dependence on imported food and to begin utilizing the island's human and materials resources to develop a system that will achieve local food self-sufficiency.

4. Describe the target population to be served.

The ultimate target population is comprised of both the island's residents and its visitors. The immediate intention of this project is to initiate a community level organizational development, training, production and distribution module starting with one district and gradually expanding to all seven districts on Kauai. Simultaneously, we will be refining existing systems of training, production and distribution as we progressively expand into each subsequent district. Initially the project will focus on serving the neighborhood populations through a CSA (community supported agriculture) system of farm to family. Then, as gardens in these districts achieve a satisfactory level of efficiency and productivity, we will begin expanding to supply regional markets, restaurants and resorts.

5. The geographic coverage

The project leaders have already started the process of establishing a network of planning committees in the seven major regions of Kauai: Waimea, Hanapepe, Koloa, Lihue, Kapaa, Kilauea and Hanalei. One or more volunteers are currently serving as chairpersons of these committees in each region. The volunteer chairpersons are currently gathering information, identifying potential garden sites, recruiting other community members, building public interest in the project and providing representation to the Project Directors and Coordinating Council in a way that is contributing to the planning and implementation process.

II. Service Summary and Outcomes

1. Describe the scope of work, tasks and responsibilities

The detailed tasks of this project will be carried out in a manner consistent with each of the goals as outlined below:

Goal A.

To continue the development of Malama Kauai's Farm Incubator Program and a Community Supported Agriculture (CSA) system as a primary training and food distribution module that will establish food self-sufficiency for the island of Kauai and further a financially independent system.

Malama Kauai's Farm Incubator Program (FIP) was launched in March 2007 as a pilot training system. This program offers to willing individuals an opportunity to receive education, technical support, land, tools and the basic resources needed to successfully farm a 4000square foot plot that contributes to a local distribution program known as a Community Supported Agriculture (CSA) system. It provides graduates with a living wage and career opportunities in an evolving food industry. During the past year the program has guided 11 interns through its 12 week apprentice training and produced 7500pounds of diversified food products by methods that exceed organic standards. All food grown is distributed through a Community Supported Agriculture (CSA) system an affiliated program which guarantees an income to graduates and supplies high quality food to the community. The CSA was launched simultaneously with the FIP and has grown from 5 consumers to 70 in the past year. It is continuing to grow in response to community demand and as levels of crop production are being increased. This program has proven to be of strong interest to potential interns, existing farmers, land owners and community members.

The major leadership force in developing and refining both the FIP and the CSA has been provided by both Gary and Jillian Seals. (Please also note the Resume for Jillian Seals, the FIP and CSA Director, provided in the Section IV of this document.) Additionally, Glenn Hontz, on a volunteer basis has contributed his expertise in developing and refining the training program and organizational features of the program.

The program is now ready to expand its management capabilities and organizational structure, and to begin developing additional training tools needed to support a system for dissemination throughout the island.

These tools will include:

- A training program that will be provided to district chairpersons and potential coordinators designed to strengthen leadership and community organization skills needed to create and support the expansion of food production and distribution at the district level
- A fully developed training manual for the farm/garden students, consisting of practical procedures and references drawn from local and outside resources.
- A detailed manual consisting of organizational development and management guidelines for Trainers and District Coordinators
- Policies and Procedures for establishing and managing a locally grown food production and distribution system

The task of creating these tools will be the responsibility of the Project Directors in coordination with the Director of the FIP and CSA. It will also involve the trainers, interns and District Coordinators of this project. This group will work cooperatively toward refining all aspects of the program, guiding it to its optimal level of performance and structuring the business in a way that will ultimately insure a level of profitability essential for its continued success.

The task of planning and managing the methods for disseminating the system throughout the island will be the responsibility of the Project Coordinators in cooperation with the Coordinating Council and the Director of the FIP and CSA.

Goal B

To increase the management capacity of our existing Coordinating Council in developing community-level leadership, in building the organizational structure needed to support the project and in providing the essential support to the Districts.

The Coordinating Council is currently comprised of the directors of the project, the director of the FIP and a few representatives from the Forum and other community organizations. Additional council members will be recruited to assist in successfully achieving the detailed planning and technical support needed to accomplish the project goals. The composition of the council is intentionally flexible in its structure and is comprised of individuals willing to play an active role as needed to accomplish specific tasks. Members are selected from such fields as education, business, farming, law, soil restoration, community development and other key stake holding organizations. Sub-committees of the Council have already been formed to assist the district chairpersons in planning and implementing the project in their regions.

Through the utilization of internal leadership and outside consultants the Project Directors will build the framework and increase the management capability of the Council and the district leadership of this project by using a variety of training and personnel enhancement tools to enhance such functions as: team building, group & self facilitation, building decision making processes, employing conflict resolution, developing policies and procedures, defining roles and responsibilities and creating an evaluation system that will result in continuing improvement. Both Directors are trained and experienced in the use of these skills as described in their respective resumes (attached herewith).

The Coordinating Council and Project Directors will share overall responsibility for the success of the project. Their tasks include the following:

- Create a technical support team to assist in the methodologies of soil testing, garden installation, equipment usage and procure all resources needed for each district's operation.
- Identify and recruit individuals willing to contribute to the project.
- Establish policies and procedures for all operational aspects of the project.
- Define the roles and responsibilities for district coordinators.
- Manage the fiscal decision making process.
- Guide the time line for project expansion.
- Adjust process to accommodate the unique nature of each district.

Goal C

To assemble a Technical Support Team comprised of our island's farming professionals and food industry consultants that will provide the training, technical assistance and basic resources essential for the successful growth of this project leading to its financial independence.

The FIP and CSA system of farmer training, food production and distribution is already performing successfully in Kilauea. The goal is to gradually establish similar programs in the other districts of the island. As each district of the island is somewhat unique in terms of community characteristics, land and farming resources, the project directors have selected volunteers from each district to assist in forming a planning committee. These committees are assessing the available resources in their district and are enlisting individuals and organizations that will be willing to support the project. They are building interest in the development and/or expansion of home gardens, community gardens and small farming enterprises.

To provide each of these district committees with the assistance they need, a Technical Support Team is being formed. This team will offer the training and technical support required to insure the success of the project as it expands island-wide. The project directors and council members are building this team from the island's array of human resources. Individuals are being enlisted that are already involved with Malama Kauai's community programs such as the EcoRoundTable, the Kauai Food Industry Forum, Sustainable Design LLC, the Kauai Farm Bureau, the Hawaii Organic Farmers Association and several of the other organizations that are in alignment with this project.

When appropriate, based on the development time-table of this project, the directors will begin the process of recruiting additional qualified individuals to serve on the Technical Support Team. Announcements will be issued; applications will be received and reviewed by the Coordinating Council and other administrative members of the project. The Team will be formed from the top candidates. Specific members of the team will then be assigned to assist specific regions of the island and to render the kind of assistance needed in that region.

Goal D

To expand this growing network of small farms and community gardens throughout the principal regions of Kauai.

The ground work has already been laid for this type of expansion by various activities and trends including:

- The Hawaii 2050 Sustainability Task Force,
- The growing demand for locally grown food,
- Malama Kauai's EcoRoundTable public meetings and

- the growing popularity of its Farm Incubator Program,
- The community involvement activities sponsored by the Kauai Food Industry Forum,
- The series of training programs for gardeners and farmers conducted at Kauai Community College, and
- The persistent media coverage of the oil crisis and its potential impact on food prices.

Collectively, these activities and trends have increased the public's level of awareness regarding the need for local food production and are creating a demand for action. This project addresses this demand and provides a viable solution.

The Project Directors have already developed a network of committee chairpersons in each district. As noted earlier, these volunteer chairpersons are working with others in their respective communities to identify resources and develop preliminary plans for expansion. Although the progress in each district is unique, the common thread is a focus on increasing means to provide a growing quantity of food to residents of their neighborhood. Eventually, each district will select/elect a District Coordinator to formalize their relationship to the Coordinating Council and to assist in coordinating the services to be provided by the Technical Support Team.

To orchestrate this process, routine meetings are being held with the district chairpersons, the Project Directors and members of the Coordinating Council. The purpose of these planning meetings is to foster the process of expanding the program by identifying needs, dealing with problems and determining the resources needed for the successful implementation of farmer training, food production and distribution systems in each district.

Goal E

To develop the tools and methods that will foster the growth of a vertically-integrated and cooperative food production and marketing system that will best serve the island.

This proposal outlines plans to increase the level of food self-sufficiency on Kauai by supporting the development of a network of small farms and community and/or home gardens in the island's seven major districts that will supply a suitable portion of Kauai's basic food needs. The initial focus of the program is create a network that will supply food to the residents of each district via a CSA arrangement (community supported agriculture) and then to gradually increase production to also supply the markets, restaurants and resorts in these districts.

This is clearly a major undertaking and its success will rely on providing training and technical assistance to establish effective organizational systems, to train essential personnel and to achieve a suitable level of profitability to sustain the project. The membership of the Council provides access to the skills and talents necessary to achieve this undertaking. This proposal seeks the funding to launch the project and to develop it into a suitable level of organizational effectiveness and self-sufficiency. It is intended that this emerging system will become a financially successful enterprise that is vertically

integrated to serve the entire island and managed in a cooperative manner with appropriate representation and participation from each district. As the project unfolds, expert consulting services will be retained to help guide the long-term goals of the project.

2. Project Timeline for Accomplishing Results

The timeline required to accomplish the start-up of this project and to successfully develop it to a point of stability and preliminary financial self-sufficiency is estimated to be 12 months. Within this period, we will have completed and documented the successful features of our pilot program while organizing the foundation of additional districts and expanding at a rate which supports their operational and financial success. As this is a substantial task and as some problems are yet unknown, it is recognized that all intended phases may not be completed satisfactorily in the allotted 12 month period. Accordingly, if necessary, additional funding will be requested for the balance of work required to successfully complete the project. The specific sequence of steps involved in this process is described below.

Timeline for Developing the Community/ Home Gardens Program

Month	Activity and Outcome
#1 & 2	Project Directors will work with the Coordinating Council to expand its internal organizational and management capabilities via training and consulting services. Project Directors will begin outlining the training manuals and related materials needed for expansion of the program into the districts. Meetings will be held with the district chairpersons and assistance will be provided to help them with their various developmental tasks.
#3	The district committees will be assisted in formalizing their community organizational structures, in selecting a District Coordinator and further assessing and organizing the resources of their region. Members for the Technical Support Team will be recruited and preliminary assignments to the districts will be arranged.
#4	Training manuals and related instructional materials will be completed, and field testing of these materials will begin.
#5	Work on the tasks indicated above will be completed and the process of implementing community level training and development will begin.
#6, 7, 8	The Project Directors will continue meetings with the District Coordinators and begin utilizing the services of the Technical Support Team to provide training programs in the districts that are ready to establish gardens. Marketing materials will be formulated and implementation will begin.
#9 & 10	New gardens will be brought on line in other districts as the Coordinators and participants in those districts have completed training and are ready to begin.

	Preliminary CSA programs will be planned and initiated as various gardens reach a level of stable production. Business planning will focus on improved means for achieving break-even and ultimate levels of on-going profitability.
#11 & 12	Assistance to the various districts will continue in the form of on-going training and technical support in matters of organization and production.
	Future development in subsequent months..... As conditions permit, the districts will be assisted in expanding their respective programs into additional gardens and with an increase in CSA programs. Subsequent requests for funds needed for the successful completion of this project will be submitted in a timely manner. (i.e. January 2009)

3. Quality Assurance and Evaluation Plans

This project will employ well established classic principles and practices of program evaluation. Some existing and anticipated members of the Coordinating Council are experienced in project evaluation. One of the Project Directors, Glenn Hontz, has a background of experience in the design and management of program evaluation systems. Together they will design a professional program of evaluation that is:

- comprehensive (looks at all parts),
- continuous (examines progress from beginning to end),
- cooperative (involves all stakeholders) and
- cumulative (gathers and records data step by step).

Ultimately, the success of this project will be measured by determining the degree to which it has been effective in designing and implementing a system of training, food production and distribution that is profitable and sustainable. Designing and applying an evaluation system for this project will require the understanding and support of all participants, including the Council, the project directors and regional coordinators and others needed to insure that data is collected and systematically evaluated, that problems are honestly confronted and solutions are developed and implemented.

This kind of progressive evaluation is actually a key component of the team building approach to organizational development which is the very foundation of this project. If we are successful in building teams that are dedicated to the task, that learn to respect and honor each other, hold themselves accountable and are willing to commit to working together to develop solid plans that lead to genuine solutions --- as we build these kinds of teams, we will have no problem in also designing a system for evaluating our individual and collective results. This is precisely the organizational approach that has been adopted by the project leadership and will guide its implementation.

4. Measures of Effectiveness

The measures of effectiveness for this project and their related methods of evaluation will focus on assessing progress toward achieving the goals of this project. In their present form, these goals are broad in nature and will be further clarified with a related set of objectives for each that establishes the means for accurate measurement and adds a level of evaluation for ongoing internal improvement. A preliminary version is provided below as a means of initial clarification. Of necessity, further details can only be added as the project unfolds. This will be accomplished by the Project Directors in concert with the Coordinating Council and other key members of the program.

Each of the goals and their related measurable objectives are summarized below:

Goal A. To continue the development of Malama Kauai's Farm Incubator Program and a Community Supported Agriculture (CSA) system as a primary training and food distribution module that will establish food self-sufficiency for the island of Kauai and further a financially independent system.

Objectives

- 1 The Malama Kauai (FIP) Farm Incubator Program pilot phase conducted in the Kilauea district will grow from 50 members to 150 members by the 4th month of the project.
- 2 The training manuals and related instructional materials developed by the FIP will have been field tested and be ready for preliminary use in other districts by the 4th month
- 3 Students who entered the program will have completed their internship and will be prepared to assist District Coordinators in the development of preliminary garden planning activities by the 6th month.

Goal B To increase the management capacity of our existing Coordinating Council in developing community-level leadership, in building the organizational structure needed to support the project and in providing the essential support to the Districts.

Objectives

- 1 The internal training and development programs provided for the purpose of increasing the organizational and management capabilities of the Coordinating Council will have been completed and implemented by the 4th month. Training and development of the Council and its members will be on-going. Further assistance in the learning of new skills will be provided as needed by consultants and trainers procured for that purpose.
- 2 The Council and Project Coordinators will begin planning for the delivery of training and technical assistance to the districts by the 6th month

Goal C To assemble a Technical Support Team comprised of our island's farming professionals and food industry consultants that will provide the training, technical assistance and basic resources essential for the successful growth of this project leading to its financial independence.

Objectives

- 1 The preliminary selection of specialists and consultants needed for the Technical Support Team will be completed by the end of the 3rd month. This process will be on-going as new needs emerge requiring the procurement of additional team members.
- 2 The team members will begin a series of meetings with the Coordinating Council and Project Directors to develop plans for delivering services to the districts by the beginning of the 4th month.
- 3 The services of the Team will start being offered to the districts by the 5th month and will continue as needed throughout the project.

Goal D. To expand this growing network of small farms and community gardens throughout the principal regions of Kauai.

Objectives

- 1 The pilot program developed in the Kilauea district will be introduced in one or more of the districts by the 7th month. This program will serve as the model for further expansion of training, production and distribution systems in subsequent districts.
- 2 The guidance and assistance provided by the District Coordinators and the Training and Technical Assistance Team will continue to support the development of the gardens (home, community gardens, small commercial farms and additional FIP enterprises) on an as needed basis beginning in month 4 and continuing throughout the life of the project.

Goal E. To develop the tools and methods that will foster the growth of a vertically-integrated and cooperative food production and marketing system that will best serve the island.

Objectives

- 1 The system of training, food production and distribution developed by Malama Kauai's pilot FIP and refined in the various districts of Kauai during the period of this project will be made available to other farmers and agricultural enterprises as a successful model for their use. Public promotion and dissemination of this system will begin during the 6th month and continue throughout the project.
- 2 The assistance of the Technical Advisory Team, the Coordinating Council members and the Project Directors will be provided on a time-available

basis to other Kauai farmers and agricultural enterprises not directly participating in the program. This assistance will begin in month 7 and be provided on a continuing basis throughout the project.

- 3 Training and organizational development materials will be completed by the end of the 4th month and will be offered to other suitable organizations as a means for increasing both their awareness and capability to participate in the development of the food self-sufficiency efforts of this project.
- 4 Public meetings will be held on a routine basis every 3 months to keep the public aware of our goals and informed regarding our progress.

III. Financial

NOTE See attached budget.

Project Assistants

Additional support will be provided by one or more project assistants selected to provide clerical and administrative services as needed to the Project Coordinator, the District Coordinators and the Tech Team. This support will be provided in such matters as arranging meetings, procuring and reproducing training materials, purchasing supplies, procuring garden tools and equipment, gathering data, assisting with CSA programs and conducting program assessment and evaluation. These Project Assistants will mostly work under the supervision of the Project Coordinator and will be assigned to assist District Coordinators and Tech Team personnel on an as-needed basis.

Soil Amendments and Equipment

Funds will be used to address specific problems of soil restoration as encountered in each district. There are various methods available for testing soil and estimating the costs to restore the organic qualities of previously cultivated agriculture land. However, for the purposes of this proposal we have used a high estimate of \$6,000 per acre. This figure is intended to include the costs of soil testing, procurement of suitable amendments, shipping and labor to apply the amendments. It also recognizes that some of the sites will require much greater time and effort to restore due to excessive depletion resulting from prior use. Although it is estimated that the budgeted cost for soil amendments will be sufficient, a contingency line item for miscellaneous costs is also included.

Equipment will be acquired and shared with each district as needed to accomplish the preparation of lands for gardens. The sharing of equipment, amendments and technical assistance will begin the process of helping the seven districts to learn to work

cooperatively toward the development of an island wide system of coordinated and vertically integrated food production.

The process of acquiring and distributing amendments and equipment will be managed by the Project Coordinator in concert with the needs and requests of the District Coordinators.

IV. Experience and Capability

A. Necessary Skills and Experience

The qualifications of the principals and directors of this project are summarized below in a resume for each.

Project Directors: Gary Seals and Glenn Hontz

Gary Seals

P.O. Box 728 Kilauea, HI. 96754
Phone- 808.651.7732 email- gary@malamakauai.org

As a Sustainability Facilitator Gary works to ensure vitality in all that he does; at home, on the farm and throughout the world. Incorporating practical building principles along with visionary passion, his work is fueled by tangible results based in co-operative methods and models. Gary's diverse background in sustainable solutions, has guided his life long dedication toward regenerative projects. Through work in education and program development on local and national levels he continues to cultivate a rapidly expanding market place for sustainable engineers.

Educational Background

Bella Vista High School Fair Oaks, California. Graduate 1993

Sierra College Rocklin, CA. Major Geology 1993-1995

UC Davis, CA. Major Geology

Minor Sociology 1995-1997

Cultural Immersion Program, Nicaragua and El Salvador, Graduate 1997-1998

RLS Practical Engineering Program, Chico, CA. Graduate 1998

USFS Post Natural Disaster Erosion Control/Hydrology Program, Chico, CA. Graduate 1998

Permaculture Design Certification Course, Skywater, CA. Graduate 2001

Aloha Auryveda Academy, Kapaa, HI. Graduate 2004

Professional Practices

Upon returning from Central America in 1998, Gary co-founded High Sierra Sound and Stage, an environmentally conscious business dedicated to the design and manufacturing of unique stages and sound systems. With a focus on production management and development through education and team building, Gary and his company became known for their success in using alternative energy to achieve world class performances at unique venues nation wide. After

selling the business in 2001, Gary established Sol Systems; an organization based in appropriate energy design, installation and education. Through selective outreach Mr. Seals developed Sol System's core team of designer/builders. This team's focus included many forms of sustainable solutions from vehicle conversions with bio-fuels to solar, wind, hydro installations and workshops. Before relocating to Kauai in 2002, Gary guided the Sol Systems team through their final U.S. Mainland project; the world's largest mobile solar powered audio system.

On Kauai, Sol Systems has established itself as an organization providing commercial and residential consultation, education and installation of photovoltaic systems and permaculture principles. Over the last two years Mr. Seals has returned his focus to the soil, in belief that it is the foundation of the islands self-sufficiency in food production and land remediation. As a co-founder of Farm Incubator Program, Gary is utilizing his facilitation, program and community development skills to build structure in a truly sustainable program for Kauai and beyond. Most recently Gary has joined the board of directors for Malama Kauai where he is further developing educational outreach programs.

Glenn Hontz

PO Box 1780, Koloa, HI 96756

Tel. 808-742-7820

Email: hontz@hawaii.edu

A short summary of his education and experience

Glenn Hontz has a rich and varied background in the fields of curriculum design, teaching, business development and program management. He has held leadership positions in higher education, several business enterprises and government service.

He earned his Master's and Doctor's degrees from Columbia University in the administration of higher education and has served as a professor and administrator at several universities (see below)

He has designed and managed career training programs in a variety of fields, including: elementary/secondary teaching, entrepreneurship and business leadership, public health, international trade, farming and agriculture and Peace Corps Foreign Service.

He developed and operated successful businesses in the areas of international trade, advertising and marketing, executive training, restaurant operations and management consulting.

He has held leadership positions in city planning, municipal program development and community improvement.

His major career positions include the following:

Teacher and school principal (New York State public schools)

College professor and administrator (State University of New York, University of Rochester, Tulane University, University of California, University of Hawaii and Kauai Community College)

Founder & President of Inter-American Enterprises, Inc. (imported native handcrafted clothing, jewelry and art from Mexico for sale at retail outlets in the southern and western US.)

Director of the Center for School Desegregation, Tulane University, New Orleans (supported by a federal grant, the Center was responsible for creating desegregation plans for Louisiana school districts statewide and for providing technical assistance in developing educational improvement programs; this Center won national acclaim for its successful integration of schools throughout Louisiana and served as a model for the formation of other similar centers in the southern states)

Director of City Planning, Garden Grove, California (managed a range of municipal programs designed to improve the economic and social welfare of this central California city; also won a federal grant for the coordination and improvement of vital services among nine neighboring cities in Orange County --- these services included police, fire, emergency medical response, long-range planning, assistance to senior citizens, and other programs of common benefit)

Founder and President of Management and Marketing Associates (a Kauai based business assistance and consulting firm that specialized in designing a full range of advertising and marketing programs for hotels, restaurants and other visitor-oriented enterprises throughout the islands of Hawaii)

Founder and President of the International Community Network, Inc. (a brokerage firm that specialized in the sale of environmentally friendly products manufactured in the US to markets in the Pacific and Europe through a network comprised of 35 agents in those regions)

Prior to accepting his present position at Kauai Community College as the director of the USDA grant-sponsored food industry program for the training of entrepreneurs, he served as a counselor at the Small Business Development Center on that campus assisting a wide range of candidates to plan and implement business enterprises of all kinds.

He is well respected as a teacher and counselor and admired as a creative entrepreneur and business leader. His associates view him as a person who will take on almost any task and accomplish it successfully.

For more information, references or related data, please contact Dr. Hontz at the address shown above. A complete transcript and placement portfolio is available from Columbia University upon request.

Director of the Farm Incubator Program and The Community Supported Agriculture System: Jillian Seals

Jillian T. Seals
P.O. box 728 Kilauea, HI. 96754
808.652.5110 mamajgrows@yahoo.com

The strong passions which include the Island's conservation, land remediation and sustainable solutions for the planet, have helped sculpt Jillian into many dynamic roles involving farm management, diversified agriculture, market gardening, teaching and training. As the Director of the Community Supported Agriculture Program, Co-Creator Farm Incubator Program and Master Gardener at the program's training site, Jillian offers her expertise in bio-intensive food propagation, production and education to Kauai and beyond.

Educational Background

Graduate- Hilton Head High School, HHI, SC- 1994

University of South Carolina- Columbia, SC

Major Biology; Minor Hotel Restaurant Tourism Management- 1994-1996

Graduate- Instructor Teacher Trainer Program- Outside Hilton Head, HHI, SC- 1995

Graduate- Corporate Trainer Program- HOA Corporation, HHI, SC- 1996-1998

Graduate- Instructor Teacher Trainer Program- American Canoe Association, Tybee Island, GA- 1996

Graduate- Bio-Intensive Market Garden Program-Gian, Moloa'a, HI- 2000-2001

Graduate- Commercial Organic Farming Program- Nectar Gardens, Moloa'a HI- 2001-2005

Graduate- Building and Sustaining Intentional Land Based Communities Course-

Occidental Arts and Ecology Center, Kaua'i Authentic Farms, Moloa'a, HI- 2005

Life Experiences

After growing up and participating in her Families large- scale farming operations in New England and the Dominican Republic, Jillian landed on the coast of South Carolina working full time in outdoor education, instruction, program development and eco-tourism management. Her contagious enthusiasm and willingness in company involvement and team building brought Jillian to a position abroad, as a Corporate

Trainer in Mexico and Central America. Here, she was able to implement her bi-lingual skills in agro-tourism, environmental education, and sustainability. These positions offered Mrs. Seals the hands-on experience and opportunity to implement life long interests in resource development, system and landscape design with emphasis in permaculture principles. In search of new opportunities that model and utilize sustainable practices, Jillian found herself drawn to the Garden Island of Kauai. Within a short time, her farming roots re-sprouted involving her in the management of public and private market food distribution and the Organic Certification process for two of Kauai's north shore farms. During the last several years with the guidance of the Elders in Kauai's farming community, Jillian's quest for the applications of light impact farming practices and solutions for positive food production, has enable her to blossom into one of the Island's leading "Beyond Organic" Farm Directors. Mrs. Seals currently serves as the Master Gardener at the Farm Incubator Program training site. Jillian, along with a farming team, are planting new seeds in the field of sustainable farming here on the Garden Island and beyond.

Personal Goals

- ❖ Establishment of "Beyond Organic" farm and labeling certification
- ❖ Local distribution of Kauai grown food
- ❖ Development of educational literature based in "Beyond Organic" practices in Hawaii
- ❖ School Yard garden program development
- ❖ Community compost education and implementation
- ❖ Promote farm based youth employment
- ❖ Island self-sufficiency

Description of principal affiliated organizations:

Kauai Food Industry Forum
and
Malama Kauai

Kauai Food Industry Forum

Sponsored by Kauai Community College and
Garden Island Resource Conservation & Development

The Kauai Food Industry Forum was created in January 2004 as an informal organization to facilitate the exchange of information and promote cooperative benefits among agencies, organizations, businesses and individuals involved in agriculture and the food industry. In January 2005, the Forum became an affiliate of the USDA sponsored Garden Island Resource Conservation and Development agency and is thereby enabled to seek

grants through this nonprofit organization. Participation in the activities of the Forum is open to all interested public or private organizations or individuals. For information concerning free membership and future events call Glenn Hontz, the Forum Chairperson, at 808 246-4859.

Goals of the Forum

1. Promote agricultural and the food industry on Kauai as a vital component of the island's economy and as a mean to preserve its rural lifestyle.
2. Identify and evaluate problems of this industry and thereupon present recommendations suitable for legislative action and/or develop initiatives that can be undertaken by the Forum in cooperation with its member agencies and/or other organizations to produce viable solutions.
3. Promote the development of training programs that will increase the availability of high quality leadership and suitable manpower for agriculture and the food industry.
4. Plan and conduct a series of public information programs that address the issues involved in the food industry on Kauai and that outline possible solutions to these issues.

Participating Organizations and Agencies

Alu Like, Inc., Big Save Markets, Cattlemen's Association, Chamber of Commerce, Civil Defense Office, Department of Education, Dept. Business & Economic Development, Farm Bureau, Gay & Robinson Plantation, Grove Farm, HI Agriculture Development Corp., HI Dept. of Education, HI State Senate, House of Representatives, Hyatt Regency, Kauai Community College, Kauai County Council, Kauai Economic Development Board, Kauai Food Bank, Kauai Nursery & Landscaping, Kauai Community College, Kauai Planning & Action Alliance, Kilohana Plantation, Office of Economic Development, Office of Hawaiian Affairs, Office of the Mayor, Pacific Missile Range Facility, Pioneer Hi-Bred Int'l., Resource Conservation & Development, Inc., Rural Development Program at KCC, State Dept. of Agriculture, University of Hawaii, CTAHR, Various Kauai Growers, Visitors Bureau, and Workforce Development Office.

Malama Kauai

The Vision: A Sustainable Kaua'i

- Malama Kaua'i is a Kilauea based non-profit working to raise awareness on the importance of sustainability, to assist in implementing sustainable practices and support sustainable projects beneficial to the community. The word "malama" means to tend or take care of and, of course, Kaua'i is the name of our beautiful island home.

- The Hourglass Approach
- Malama Kaua'i works at the community level (bottom up) by seeding and supporting sustainable, community projects, educating about sustainability and supporting sustainability practices in the home and workplace. Malama Kaua'i is also working at the island level (top down) to engage and rally groups around sustainable initiatives, create and support sustainable policies and perpetuate Hawaiian traditions related to our vision.

Malama Kaua'i Is Committed To:

- Preserve Kaua'i's natural ecosystems
 - Implement a sustainable food security and agriculture strategy for Kaua'i
 - Support renewable energy initiatives that reduce global warming
 - Advocate for, create and support sustainable, affordable housing targeting the needs of the existing residential base
 - Promote and educate on the Max3R's (maximum reduce, re-use, recycle) and sustainable approaches toward zero waste
 - Reduce over development and land speculation
 - Establish and maintain a sustainability network on Kaua'i
 - Support and promote traditional 'aina (air, water, land, sea) stewardship techniques
 - Set-up and foster an island wide sustainability plan

 - Malama Kaua'i is a collaboration partner working with individuals and organizations who share the vision of a sustainable Kaua'i. If any of the areas resonate with you or your organization, please contact us and let's explore how we can work together.
-

List of verifiable experience with related projects or contracts for the most recent three years

For Glenn Hontz

For the past three years he has served as the full-time director of the USDA-funded Food Industry Career Pathways training program at Kauai Community College. This program is managed by the University of Hawaii, College of Tropical Agriculture and Human Resources. The program on Kauai is part of a State-wide Consortium comprised of other community colleges on each of the islands. The Kauai program under the leadership of Dr. Hontz has provided training in business skills (planning, management, expansion and financing) and hands-on-learning of gardening and farming at the Campus Farm at KCC. He has also been instrumental in the formation of the Kauai Food Industry Forum (described in the previous section of this proposal).

For Gary Seals

The past three years he has been applying his leadership and training skills to the development of the Malama Kauai Farm Incubator Program, which began as a family farm project in Kilauea. Gary and his wife Jillian began recruiting participants interested in learning their methods of successful organic farming. As the project developed, Gary was invited to join the Board of Directors of Malama Kauai and soon thereafter transferred management of the program to that non-profit as one of its sustainability projects.

Malama Kauai is now the sponsoring organization for this project and other programs focused on community empowerment and sustainability.

B. Facilities

The principal administrative offices of Malama Kauai are located on Kuawa Road in Kilauea, Kauai. A portion of the agricultural lands adjacent to Malama Kauai's office will be dedicated to the expansion of the Farm Incubator Program as needed. Additional agricultural lands are being provided by the owners of large acreage sites, mostly in the north shore area, on a contractual basis. Such arrangements afford these owners with tax advantages and provides the program with plots suitable for farming.

The original lands on which the Farm Incubator Program was developed were leased by Gary Seals. These are still actively under cultivation. Additional lands have been dedicated to the project by Pua Lei Properties.

The essential farm equipment is owned by Gary Seals and Sustainable Design. However, as the project expands into other districts of Kauai, it will be necessary to lease additional equipment. Funds for this purpose are included in the proposed budget of this project.

Additional farm land is being sought by the project's planning committees in the various other districts of Kauai. Although arrangements have not yet been finalized, there is already a clear indication of interest from other land owners, former plantations, churches and commercial enterprises interested in supporting food self-sufficiency for Kauai. Contractual arrangements will be concluded with these land owners as the program expands into these districts.

V. Personnel: Project Organization and Staffing

A. Proposed Staffing

The leadership and management of this project will be provided by Gary Seals and Glenn Hontz. (There qualifications are summarized in resumes provided with this proposal.) They are currently processing applications from individuals who are willing to serve on the Coordinating Council. This council is currently in transition as new members are selected each year. Membership is comprised of leaders from organizations on Kauai in the fields of agriculture, farming, education, community development and others mostly from the membership of the Kauai Food Industry Forum and the Malama Kauai EcoRound Table program. These are individuals with a dedication to the development of food self-sufficiency for Kauai.

The District Coordinators will be selected by the planning committees formed in each district and currently managed by a chairperson affiliated with the Kauai Food Industry Forum and the Malama Kauai Farm Incubator Program. These chairpersons and the members of their committees are volunteers. As the program in each district is ready to begin farming activities, a District Coordinator will be selected to formalize that district's relationship to the Coordinating Committee and thus facilitate on-going cooperative development.

The members of the Training and Technical Support Team will be selected by the Project Directors and Coordinating Council on an as-needed-basis to support the organizational development of the project and to provide assistance to the various districts. A rich array of resource persons and consultants is available from the membership of the two participating organizations (Malama Kauai and the Food Industry Forum) and from the various agencies that participate in their programs.

This Community Supported Agriculture system was developed by Jillian Seals and members of the Farm Incubator Program as a distribution model providing the management for the CSA (community supported agriculture) outlet. It enlists families to receive the produce grown in the gardens of the program and arranges pricing, distribution and/or pick-up arrangements. The earnings received from this CSA system will provide the basis for the financial self-sufficiency and future growth of the entire program. As the program expands into subsequent districts, additional personnel will be added to assist in operations.

B. Organization Chart

See below chart

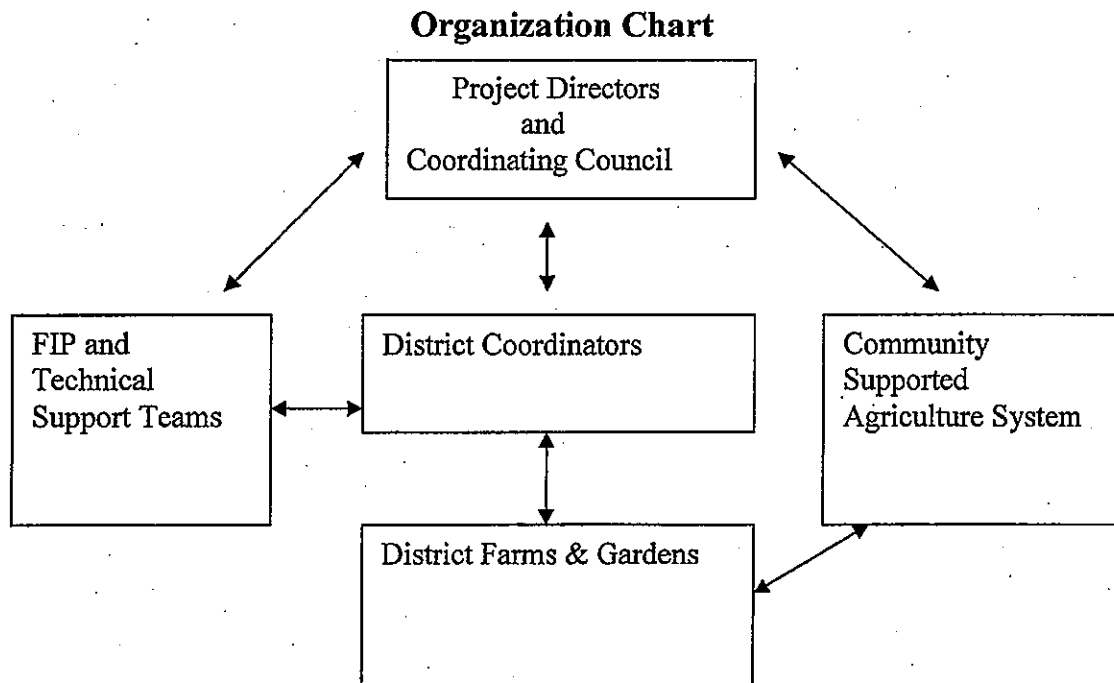
VI. Other

A. Litigation

Malama Kauai is not involved in any pending litigation at this time.

B. Licensure or Accreditation

Malama Kauai does not possess any type of licensure or accreditation that is relevant to this proposal. It is an acknowledged 501c3 non-profit organization. The directors of the project are both highly qualified in their respective fields.



The organization of this project is designed to facilitate communication and interaction between the various components of the program. Principal management responsibility for the entire program rests with the Project Directors and the Coordinating Council. Their role is to provide direct assistance to the District Coordinators in organizing and developing a network of farms and gardens. The role of the FIP and Technical Support Teams is to provide services as needed to the District Coordinators on developing solutions to the challenges of farming (soil, crops, pest control, etc.).

BUDGET REQUEST BY SOURCE OF FUNDS
(Period: July 1, 2008 to June 30, 2009)

Applicant: Malama Kauai

BUDGET CATEGORIES	Total State Funds Requested (a)	(b)	(c)	(d)
A. PERSONNEL COST				
1. Salaries	16,500	53,400	53,400	53,400
2. Payroll Taxes & Assessments				
3. Fringe Benefits				
TOTAL PERSONNEL COST	16,500	53,400	53,400	53,400
B. OTHER CURRENT EXPENSES				
1. Airfare, Inter-Island				
2. Insurance				
3. Lease/Rental of Equipment		10,000	10,000	
4. Lease/Rental of Space				
5. Staff Training				
6. Supplies	1,250	1,250	1,250	1,250
7. Telecommunication				
8. Utilities				
9. Soil amendments		7,000	7,000	7,000
10 Miscellaneous		1,500	1,500	1,500
11 Sponsors overhead rate 10%	5,680	5,680	5,680	5,680
12				
13				
14				
15				
16				
17				
18				
19				
20				
TOTAL OTHER CURRENT EXPENSES	6,930	25,430	25,430	15,430
C. EQUIPMENT PURCHASES				
D. MOTOR VEHICLE PURCHASES				
E. CAPITAL				
TOTAL (A+B+C+D+E)	23,430	78,830	78,830	68,830
SOURCES OF FUNDING		Budget Prepared By:		
(a) Total State Funds Requested	23,430	Glenn Hontz	808 742-7920	Phone
(b)	78,830	[Redacted Signature]		
(c)	78,830	[Redacted Signature]		
(d)	68,830	[Redacted Signature]		
		Signature of Authorized Official		
		Date		
TOTAL REVENUE	249,920	Gary D Seals Project Co-director		
		Name and Title (Please type or print)		

BUDGET JUSTIFICATION PERSONNEL - SALARIES AND WAGES

Applicant: Malama Kauai

Period: July 1, 2008 to June 30, 2009

POSITION TITLE	FULL TIME EQUIVALENT	ANNUAL SALARY A	% OF TIME BUDGETED TO REQUEST B	TOTAL SALARY BUDGETED IN REQUEST A x B
<p>Note: All paid positions for this project will be on a fee-for-service basis, and specific responsibilities will be negotiated by the Directors & Coordinating Council.</p>				
Two (2) Project Co-Directors	0.5	variable	50.00%	\$48,000
Seven (7) District Coordinators	0.33	variable	33.00%	\$94,500.00
Consultants comprising the training and technical assistance team compensated at a negotiated rate based on qualifications, estimated at \$300 /day average for total of 60 days			as needed	\$18,000.00
Project assistants to provide administrative and clerical support to the Directors, Coordinating Council and District Coordinators as needed at \$25/hr x 648 hours total			as needed	\$16,200.00
TOTAL:				\$176,700.00
<p>JUSTIFICATION/COMMENTS:</p> <p>As this project is developmental, specific individuals have not been selected and compensation will be limited as budgeted.</p>				

BUDGET JUSTIFICATION CAPITAL PROJECT DETAILS

Applicant: Malama Kauai

Period: July 1, 2008 to June 30, 2009

TOTAL PROJECT COST	FUNDING AMOUNT REQUESTED							
	ANY OTHER SOURCE OF FUNDS RECEIVED IN PRIOR YEARS		STATE FUNDS REQUESTED		FUNDING REQUIRED IN SUCCEEDING YEARS			
	FY: 2005-2006	FY: 2006-2007	FY: 2007-2008	FY: 2008-2009	FY: 2009-2010	FY: 2010-2011		
PLANS								
LAND ACQUISITION								
DESIGN								
CONSTRUCTION								
EQUIPMENT								
TOTAL:								
JUSTIFICATION/COMMENTS:								

All relevant costs of this project are provided in the previous sections of the budget.

**DECLARATION STATEMENT
APPLICANTS FOR GRANTS AND SUBSIDIES
CHAPTER 42F, HAWAII REVISED STATUTES**

The undersigned authorized representative of the applicant acknowledges that said applicant meets and will comply with all of the following standards for the award of grants and subsidies pursuant to section 42F-103, Hawaii Revised Statutes:

- (1) Is licensed or accredited, in accordance with federal, state, or county statutes, rules, or ordinances, to conduct the activities or provide the services for which a grant or subsidy is awarded;
- (2) Comply with all applicable federal and state laws prohibiting discrimination against any person on the basis of race, color, national origin, religion, creed, sex, age, sexual orientation, or disability;
- (3) Agree not to use state funds for entertainment or lobbying activities; and
- (4) Allow the state agency to which funds for the grant or subsidy were appropriated for expenditure, legislative committees and their staff, and the auditor full access to their records, reports, files, and other related documents and information for purposes of monitoring, measuring the effectiveness, and assuring the proper expenditure of the grant or subsidy.

In addition, a grant or subsidy may be made to an organization only if the organization:

- (1) Is incorporated under the laws of the State; and
- (2) Has bylaws or policies that describe the manner in which the activities or services for which a grant or subsidy is awarded shall be conducted or provided.

Further, a grant or subsidy may be awarded to a non-profit organization only if the organization:

- (1) Has been determined and designated to be a non-profit organization by the Internal Revenue Service; and
- (2) Has a governing board whose members have no material conflict of interest and serve without compensation.

Further, the undersigned authorized representative certifies that this statement is true and correct to the best of the applicant's knowledge.

MALAMA KAUAI

(Typed Name of Individual or Organization)

(Signature)

January 28, 2008

(Date)

Gary Seals
(Typed Name)

Director
(Title)



Mālama Kaua'i
M A L A M A K A U A I . O R G

January 28, 2008

Senate Committee on Ways and Means

State Capitol, Rm. 210

Honolulu, HI 96813

ATTN Aaron Nyuha

Aloha Mr. Nyuha

You recently received a proposal sent to you by Glenn Hontz on behalf of Malama Kauai. Since that was mailed, we have discovered some minor corrections that were not included in his copy to you. Accordingly, we have made those corrections and are enclosing a new original and one copy of the proposal which includes these changes. Kindly disregard the earlier version and replace it with the corrected one enclosed here. Our apologies for any inconvenience.

Sincerely,

Gary D. Seals
Malama Kauai

Glenn Hontz
PO Box 1780
Koloa, Kauai, HI 96756
Tel 808 742-7820
Email hontz@hawaii.edu

January 22, 2008

Senate Committee on Ways and Means
State Capitol, Rm. 210
Honolulu, HI 96813
ATTN Aaron Nyuha

Dear Mr. Nyuha,

Per the invitation of Senator Hooser, I am submitting the enclosed proposal (an original and one copy) for presentation to the Senate Committee on Ways and Means. This proposal is being sponsored by Malama Kauai, a 501c3 non-profit organization located on Kauai. Gary Seals, a member of Malama Kauai's Board of Directors, and I will serve as the Co-Directors of the project.

I request that you review this application and let me know if it is complete and in acceptable format. As this is our first request of this kind, we would appreciate knowing that it is presented in a suitable manner.

If my request is appropriate, please respond accordingly via email or phone.

I thank you for your kind support.

Best regards,

Glenn Hontz