

House District - Statewide
Senate District - Statewide

THE TWENTY-FOURTH LEGISLATURE
HAWAII STATE LEGISLATURE
APPLICATION FOR GRANTS & SUBSIDIES
CHAPTER 42F, HAWAII REVISED STATUTES

Log No: 153-0

For Legislature's Use Only

Type of Grant or Subsidy Request:

- GRANT REQUEST - OPERATING GRANT REQUEST - CAPITAL SUBSIDY REQUEST

"Grant" means an award of state funds by the legislature, by an appropriation to a specified recipient, to support the activities of the recipient and permit the community to benefit from those activities.

"Subsidy" means an award of state funds by the legislature, by an appropriation to a recipient specified in the appropriation, to reduce the costs incurred by the organization or individual in providing a service available to some or all members of the public.

"Recipient" means any organization or person receiving a grant or subsidy.

STATE DEPARTMENT OR AGENCY RELATED TO THIS REQUEST (LEAVE BLANK IF UNKNOWN):
CHRONIC DISEASE MANAGEMENT AND CONTROL BRANCH, DEPT. OF HEALTH

STATE PROGRAM I.D. NO. (LEAVE BLANK IF UNKNOWN):

1. APPLICANT INFORMATION:

Legal Name of Requesting Organization or Individual:
Kōkua Mau, Inc.
Dbas:
Kōkua Mau
Street Address:
860 Iwilei Rd., Honolulu, HI 96817
Mailing Address:
P.O. Box 62155, Honolulu, HI 96839-2155

2. CONTACT PERSON FOR MATTERS INVOLVING THIS APPLICATION:

Name RACHAEL WONG
Title Executive Director
Phone # 808-585-9977
Fax # 808-988-3877
e-mail rwong@kokuamau.org

3. TYPE OF BUSINESS ENTITY:

- NON PROFIT CORPORATION
 FOR PROFIT CORPORATION
 LIMITED LIABILITY COMPANY
 SOLE PROPRIETORSHIP/INDIVIDUAL

4. FEDERAL TAX ID #: [REDACTED]
5. STATE TAX ID #: [REDACTED]
6. SSN (IF AN INDIVIDUAL):

7. DESCRIPTIVE TITLE OF APPLICANT'S REQUEST:

DEVELOPING THE PROFESSIONAL CAPACITY OF HEALTH PROVIDERS CARING FOR INDIVIDUALS AND FAMILIES LIVING WITH CHRONIC DISEASE OR AT THE END OF LIFE THROUGH THE PROVISION OF A SERIES OF BEST-PRACTICE EDUCATIONAL PROGRAMS.

8. FISCAL YEARS AND AMOUNT OF STATE FUNDS REQUESTED:

FY 2008-2009 \$ 93,052

9. STATUS OF SERVICE DESCRIBED IN THIS REQUEST:

- NEW SERVICE (PRESENTLY DOES NOT EXIST)
 EXISTING SERVICE (PRESENTLY IN OPERATION)

SPECIFY THE AMOUNT BY SOURCES OF FUNDS AVAILABLE AT THE TIME OF THIS REQUEST:

STATE \$
FEDERAL \$
COUNTY \$
PRIVATE/OTHER \$ 54,412

TYPE NAME & TITLE OF AUTHORIZED REPRESENTATIVE:

[REDACTED SIGNATURE]
AUTHORIZED SIGNATURE

Rachael S. Wong, MPH - Executive Director
NAME & TITLE

January 30, 2008
DATE SIGNED

**Application for a Grant-in-Aid
Hawai'i State Legislature
2008**

Project Title:

Provider Education Advancing Chronic Disease and End-of-Life Care (PEACE) Project

I. Background and Summary

Organizational Background

Kōkua Mau is the state's hospice and palliative care organization, and it is comprised of individual and organizational champions and supporters from hospitals, education, consumers, insurance, long term care and hospices. Its purpose is to improve quality of life for people in Hawai'i by promoting excellence in hospice, end-of-life care, palliative care and early advance care planning through:

- Public and professional education;
- Development of professional and organizational healthcare capacity;
- Advocacy and public policy;
- Statewide leadership; and
- Collaboration among its members and throughout the community.

This statewide non-profit organization was founded as a state coalition under a Robert Wood Johnson Foundation end-of-life initiative in 1999, and it merged with the state hospice network in 2007 to become the Hawai'i hospice and palliative care organization. As a membership organization, Kōkua Mau does not provide clinical services. More powerfully, it leverages the work of its statewide partners to develop and implement innovative, high-impact projects that improve the lives of Hawai'i individuals and families living with serious, chronic disease and at the end of life.

Kōkua Mau members include nationally-known leaders in long term, palliative, and hospice care, as well as pain and symptom management, spiritual care, grief and bereavement, and advance care planning. Kōkua Mau itself has received awards from the Robert Wood Johnson Foundation's end-of-life care center, Rallying Points, and Harvard's prestigious Innovations in American Government Award program. The Kōkua Mau mission is:

To weave a lei of community support so that Hawai'i's people may die in the place of their choice, free of suffering and pain, and be treated according to their beliefs and values.

Goals and Objectives

The goals of this project are:

To increase the professional capacity of Hawai'i health providers to care for individuals and families living with chronic, serious illness or at the end of life through quality educational programs and the implementation of best practice standards.

"Health Providers" include nurses, social workers, aides, therapists, and other healthcare professionals working in community programs, long-term care facilities, home health settings, treatment centers, hospitals, case management, clinics, and other healthcare sites.

"Education" consists of workshops, conferences, videos, and printed or online material.

"Best Practice Standards" encompass the knowledge base, skills, techniques and understanding of care that best addresses the physical, psychosocial, and spiritual health of individuals and families living with chronic, serious illness or at the end of life and is recognized by experts as appropriate, widely-used, and accepted practice.

Objectives are:

1. Provide educational courses for local health providers.
2. Tailor educational offerings to specific needs identified by course participants (i.e.. health providers).
3. Develop and share best practice expertise and applications.
4. Generate a model for cost-efficient and high-quality professional training.
5. Ensure cultural competence.
6. Compile best practice material into a volume for sharing.
7. Produce an educational video that complements the workshop series.
8. Create a venue for professional networking, sharing and a sense of community.
9. Cultivate a center of expertise in Hawai'i.
10. Evaluate success of program for replication in other areas/fields.

Public Purpose and Need

Hawai'i's population is quickly aging. In 2000, residents over the age of 60 made up 17% of the state's total population.¹ This percentage is expected to grow to 21% by 2010, and to 26% by 2020.² In three years, one in five people in the state will be over 60 years of age, and life expectancy will continue to increase. In 1990, the last year of available data, Hawai'i had the highest life expectancy at 79 years (compared to the national average of 75 years).³ With increasing age comes advancing serious and chronic disease.

In Hawai'i, diabetes, hypertension, high blood cholesterol, and obesity rates are lower than or on par with national rates. However, when these same chronic conditions are examined with respect to ethnicity and age, certain disparities are revealed: diabetes rates in Native Hawaiians, Japanese and Filipinos between the ages of 65-74 are nearly double that of Caucasians; hypertension rates escalate every ten years after the age of 44 across ethnic groups; Japanese have the highest rates of high blood cholesterol starting at age 45; and 69% of Native Hawaiians

are overweight or obese.⁴ Data from the Transpacific Renal Network also shows that chronic kidney disease rates in Hawai'i are approximately 30% higher than the national average, with 88% of dialysis patients having Asian and/or Pacific Island ancestry.⁵

Disease prevention programs administered by the state, county, and other health organizations provide a vital role in the health of our Hawai'i community. Such programs are the government's public health responsibility. However, government agencies do not have the capacity to implement ongoing educational and support programs that are specific to the needs of health providers caring for people living with chronic or terminal illness. Local health organizations either cannot afford or find it financially draining to repeatedly send staff to mainland trainings that may or may not be applicable to local practice, and organization heads confirmed they would rather send a greater number of employees to local trainings than a small number to mainland events. This project offers a viable solution to correct this gap in the public health system.

Educational programs for providers caring for Hawai'i residents and families living with serious, chronic disease or at the end of life are just as important as disease prevention programs in the development of a truly comprehensive healthcare system. It is crucial that local health providers receive the up-to-date training and support they need to provide quality care to those whom they serve. Our state has a wealth of knowledgeable experts who understand our unique cultural values and traditions. This project aims to cultivate a model in which nationally-known, local experts teach best practice standards of care to Hawai'i health providers so that the overall capacity of professional care in our state is increased in culturally appropriate ways. This project will be evaluated so that it can be replicated in other fields and areas throughout the state.

Target Population

There are two target populations in this project. The first is health providers who work in various settings throughout the islands caring for individuals and families living with serious, chronic illness or at the end of life. These nurses, aides, social workers, therapists, chaplains, and other professionals are "in the trenches" providing long-term clinical and supportive care for those who need it most. The educational programs provided in this project will not only increase the providers' knowledge base and skill set but also nurture their well-being so they can continue their work with passion and energy in a collaborative, supportive community.

The secondary target population is individuals and families living with serious, chronic disease or at the end of life. These local people will benefit from the increased capacity of the health provider population to provide personalized and best-practice care.

Geographic Coverage

The geographic scope of this project is statewide.

II. Service Summary and Outcomes

Scope of Work, Tasks and Responsibilities

The project staff will first conduct a statewide assessment of health providers in clinical care settings to ascertain their areas of interest. Topics will range from best practice standards of care to personal and professional growth. Examples of possible educational topics include:

- Pain Management
- Symptom Control
- Quality of Life: Evaluative Tools and Practices
- Case Management of Chronic and Serious Illness
- Bed Sores and Other Long Term Care Issues
- “Spiritual Care: For the Patient and Yourself”
- Advance Care Planning and Family Discussions
- “Living with Pain: Getting Your Client Back to Work”
- Patient Empowerment
- Cultural Competence
- Self Care
- Interdisciplinary Team approaches
- Team-building
- “Staying Energized for the Long Haul”

The educational programs will consist of half- to full-day courses and workshops taught by local expert faculty, and at least one class will be held on Kaua‘i, Maui, Moloka‘i, and Hawai‘i Island. Kōkua Mau partners will donate facilities to hold classes, and these conference centers include audiovisual and teleconferencing equipment. Based on the initial assessment of interest and ongoing surveys, Kōkua Mau staff will organize, publicize, and conduct a series of workshops and courses throughout the year.

Project staff will also:

1. work with selected faculty to develop curricula, which will be compiled into collection of best practice standards of care;
2. create an educational video to complement the yearlong series of educational offerings; and
3. evaluate the qualitative and quantitative benefits of the project and assess its replicability to other fields and disciplines.

Kōkua Mau produced an award-winning educational trigger video, *Breaking the Ice: Personal Stories on End of Life Issues* (2001), and the same production team has committed to partnering for a second video. The production company has significantly reduced their rates and garnered a tremendous amount of in-kind support from other crew members.

The Project Director will supervise the Project Coordinator and work with partner organizations to implement this yearlong educational and capacity-building initiative.

Projected Annual Timeline

Quarter 1:

- Conduct statewide assessment of health providers' educational needs.
- Enhance website to make it more robust and include a calendar of educational offerings, online registration, archives, and more.
- Map out yearlong schedule of activities and courses.
- Evaluate project.

Quarter 2:

- Organize, publicize, and conduct first educational workshop.
- Evaluate first course and project thus far.
- Develop video storylines and cast local families and health professionals.
- Roll out monthly/bi-monthly series of courses on different islands.
- Evaluate project.

Quarter 3:

- Continue educational series and evaluation.
- Begin compilation of course curriculum by topic.
- Video filming, editing and internal feedback.
- Evaluate project.

Quarter 4:

- Conduct final educational workshops with evaluation.
- Survey health provider employers on effectiveness of educational programs.
- Final video production.
- Complete compilation of best practice standards of care volume.
- Evaluate project.

Quality Assurance and Evaluation Plans

Educational course topics and curricula will be based upon health providers' interests as identified in the Quarter 1 needs assessment. Actual course content and format will be evaluated by surveying participants. Evaluation and quality improvement will be an ongoing process throughout the year. An interactive website will also allow for community health providers to communicate with project staff and to leave feedback about educational offerings. Additional evaluations will be administered by the continuing educational credit (CEs) entities.

The entire project will be continuously evaluated by project staff and the Kōkua Mau Advisory Board to ensure quality programs, judicious use of funds, and the meeting of health provider needs (including meeting in different communities on all islands, scheduling workshops on different days to allow for varying work schedules, and providing Hawai'i-friendly interactive content instead of didactics).

Measures of Effectiveness for Reporting

The effectiveness of the project will be assessed by the following measures, which will be reported to the State:

1. At least 300 health providers will participate in the yearlong educational series.
2. Course evaluations will show participant satisfaction with content, format and venue of educational offerings.
3. Completion of volume of best practice standards of care for health providers serving individuals and families living with serious, chronic disease or at the end of life.
4. Production of a high-quality educational video.
5. Employer satisfaction, as measured through a survey, of cost-effectiveness of local, quality educational programs.
6. Evaluate success of program for replication in other areas/fields.

III. Financial

Budget

Please see Budget Forms on pages 9-12.

Anticipated Quarterly Funding Requirements

Quarter 1	Quarter 2	Quarter 3	Quarter 4	Total Grant
\$23,263	\$23,263	\$23,263	\$23,263	\$93,052

IV. Experience and Capability

Necessary Skills and Experience

From 2004 to 2006, Kōkua Mau led a Statewide Developing Palliative Care Capacity initiative (funded by HMSA Foundation) during which five large educational courses were conducted: *Center to Advance Palliative Care* training for hospitals; *Respecting Choices*® *Course for Advance Care Planning Facilitators* for health professionals; *End-of-Life Nursing Education Consortium (ELNEC)* course for nurses; *Education on Palliative and End-of-Life Care* course for physicians; and a review series for Board Certification in Hospice and Palliative Care Nursing. The project was deemed very successful.

Under a current “Advance Care Planning: A Statewide Consumer Engagement Project” grant, Kōkua Mau sponsored three additional *Respecting Choices*® and ELNEC courses. Together, these successful courses resulted in: seven (7) hospitals developing palliative care programs; 200+ health professionals learning end-of-life care curriculum; 130+ advance care planning facilitators; and a 333% increase in board-certified hospice and palliative care nurses.

Kōkua Mau has a history of mobilizing change agents and champions in health organizations and throughout the community to implement statewide initiatives and effect significant positive change. Hawai'i hospices and statewide health organizations—Healthcare Association of Hawaii, Hawaii Long Term Care Association, HMSA, Kaiser Permanente Hawaii, University of Hawaii system, etc.—build local communities on each island and help to publicize Kōkua Mau offerings throughout the state.

As mentioned in the background section, Kōkua Mau's collaborative approach and innovative initiatives have garnered national recognition. As a membership organization, Kōkua Mau relies on its partners to identify the needs that serve as barriers to care, and it pulls together community resources to comprehensively address the problem. Lack of educational support is one such need, and it is in this same spirit that this project is proposed.

Facilities

As stated above ("Scope of Work, Tasks and Responsibilities"), Kōkua Mau partners generously donate conference center space and equipment for its community and educational programs. These facilities include audiovisual and teleconferencing capability. Hosts are usually unable to provide parking validation.

V. Personnel: Project Organization and Staffing

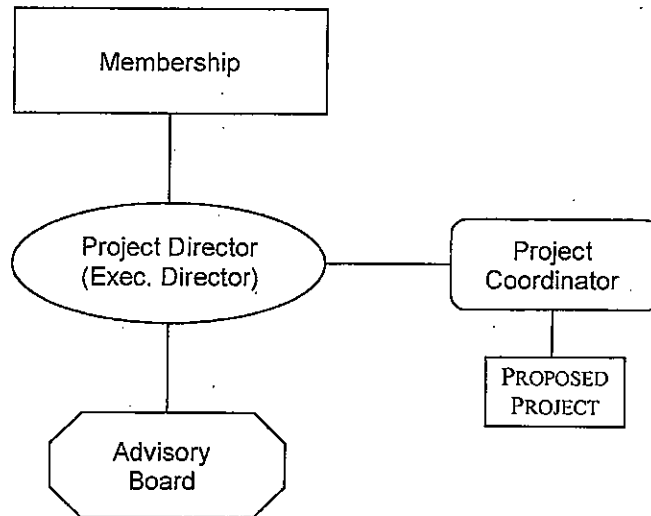
Proposed Staffing, Staff Qualifications, Supervision and Training

Proposed Project Director: **Rachael Wong, MPH**, Kōkua Mau Executive Director. Ms. Wong has worked with Kōkua Mau since 2004 and has held her current position since mid-2006. She served as Project Coordinator for two statewide grants: Developing Palliative Care Capacity; and Advance Care Planning: A Statewide Consumer Engagement Plan. In those roles, she fully organized and conducted numerous educational courses cited above ("Necessary Skills and Experience"). She supervises the Project Coordinator and organizes numerous volunteer Board of Director and Advisory Board members. Ms. Wong received an A.B. in East Asian Studies and a Certificate in Women's Studies from Princeton University, earned a MPH in Maternal and Child Health from the University of Hawai'i at Mānoa, and is currently a long-distance student in an Executive Doctorate in Public Health Program in Health Leadership at the University of North Carolina at Chapel Hill.

Proposed Project Coordinator: **Jeannette G. Kojane, MPH**, Kōkua Mau Project Coordinator. Ms. Kojane worked with Kōkua Mau between 2000-2003 as the coordinator of the Executive Office on Aging's project to educate state and county workers on end-of-life issues and care and integrate end-of-life issues into existing programs for older adults around the state. This project was very successful, and Ms. Kojane traveled to other states to replicate the Hawai'i model. She returned to Kōkua Mau in 2006 as its Speakers Bureau Coordinator. Ms. Kojane received a BA in Government from Cornell University and an MPH in Public Health Management from the University of Hawai'i at Mānoa.

Organization Chart

Kōkua Mau is an organization that “serves its membership”. The line of organization for project staff is straightforward, with the Project Director providing supervision of the Project Coordinator:



VI. Other

Litigation

Not applicable.

Licensure or Accreditation

Not applicable. Professional continuing education credits (CEs) will be provided to program participants by partner organizations.

¹ U.S. Census Bureau, (2000).

² Hawai'i Department of Business, Economic Development and Tourism, Research and Economic Analysis Division, (February 2000). *DBEDT 2025 Series: Population and Economic Projections for the State of Hawaii 2025*.

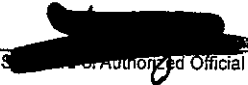
³ Hawai'i Department of Health, Office of Health Status Monitoring, and Centers for Disease Control and Prevention, National Center for Health Statistics.

⁴ Hawai'i Department of Health (2005). *Hawai'i Health Survey*.

⁵ Sukolsky, (1999). *Transpacific renal network selected demographics*. Transpacific Renal Network: San Rafael, p. 1-54.

BUDGET REQUEST BY SOURCE OF FUNDS
(Period: July 1, 2008 to June 30, 2009)

Applicant: Kōkua Mau

BUDGET CATEGORIES	Total State Funds Requested (a)	Kōkua Mau In-Kind (b)	Donated by Partners (c)	Grants Sought (d)
A. PERSONNEL COST				
1. Salaries	45,400	25,250		
2. Payroll Taxes & Assessments	6,229	3,464		
3. Fringe Benefits	3,173	1,765		
TOTAL PERSONNEL COST	54,802	30,479		
B. OTHER CURRENT EXPENSES				
1. Airfare, Inter-Island: 20 RT for faculty/sta	2,700			
2. Insurance				
3. Lease/Rental of Equipment			2,000	
4. Lease/Rental of Space			12,000	
5. Staff Training				
6. Supplies	500			
7. Telecommunication				
8. Utilities				
9. Honoraria for Faculty	6,250			
10. Postage/Mailing Service	500			
11. Airfare (Scholarships): 100 RT				17,000
12. Printing - Course Brochures & Materials	2,000			
13. Website Improvements: online education	6,000			
14. Printing - Patient Education Materials	5,000			
15. Parking for faculty/staff	300			
16. Educational Video - Production	15,000		30,000	8,000
17				
18				
19				
20				
TOTAL OTHER CURRENT EXPENSES	38,250		44,000	25,000
C. EQUIPMENT PURCHASES				
D. MOTOR VEHICLE PURCHASES				
E. CAPITAL				
TOTAL (A+B+C+D+E)	93,052	30,479	44,000	25,000
SOURCES OF FUNDING		Budget Prepared By:		
(a) Total State Funds Requested	93,052	Rachael S. Wong	808-585-9977	
(b) Kōkua Mau In-Kind	30,479	Name (Please type or print)	Phone	
(c) Donated by Partners (confirmed)	44,000		January 30, 2008	
(d) Additional Grants Sought	25,000	of Authorized Official	Date	
TOTAL REVENUE	192,532	Rachael S. Wong, Executive Director	Name and Title (Please type or print)	

BUDGET JUSTIFICATION - EQUIPMENT AND MOTOR VEHICLES

Applicant: Kōkua Mau

Period: July 1, 2008 to June 30, 2009

DESCRIPTION EQUIPMENT	NO. OF ITEMS	COST PER ITEM	TOTAL COST
None needed.			\$ -
			\$ -
			\$ -
			\$ -
			\$ -
TOTAL:			\$ -

JUSTIFICATION/COMMENTS:

DESCRIPTION OF MOTOR VEHICLE	NO. OF VEHICLES	COST PER VEHICLE	TOTAL COST
None needed.			\$ -
			\$ -
			\$ -
			\$ -
			\$ -
TOTAL:			\$ -

JUSTIFICATION/COMMENTS:

**BUDGET JUSTIFICATION
CAPITAL PROJECT DETAILS**

Applicant: Kōkua Mau

Period: July 1, 2008 to June 30, 2009

	FUNDING AMOUNT REQUESTED					
	ANY OTHER SOURCE OF FUNDS RECEIVED IN PRIOR YEARS		STATE FUNDS REQUESTED		FUNDING REQUIRED IN SUCCEEDING YEARS	
TOTAL PROJECT COST	FY: 2005-2006	FY: 2006-2007	FY:2007-2008	FY:2008-2009	FY:2009-2010	FY:2010-2011
PLANS				93052	0	0
LAND ACQUISITION						
DESIGN						
CONSTRUCTION						
EQUIPMENT						
TOTAL:	\$0	\$0	\$0	\$93,052	\$0	\$0
JUSTIFICATION/COMMENTS:						

**DECLARATION STATEMENT
APPLICANTS FOR GRANTS AND SUBSIDIES
CHAPTER 42F, HAWAII REVISED STATUTES**

The undersigned authorized representative of the applicant acknowledges that said applicant meets and will comply with all of the following standards for the award of grants and subsidies pursuant to section 42F-103, Hawai'i Revised Statutes:

- (1) Is licensed or accredited, in accordance with federal, state, or county statutes, rules, or ordinances, to conduct the activities or provide the services for which a grant or subsidy is awarded;
- (2) Comply with all applicable federal and state laws prohibiting discrimination against any person on the basis of race, color, national origin, religion, creed, sex, age, sexual orientation, or disability;
- (3) Agree not to use state funds for entertainment or lobbying activities; and
- (4) Allow the state agency to which funds for the grant or subsidy were appropriated for expenditure, legislative committees and their staff, and the auditor full access to their records, reports, files, and other related documents and information for purposes of monitoring, measuring the effectiveness, and assuring the proper expenditure of the grant or subsidy.

In addition, a grant or subsidy may be made to an organization only if the organization:

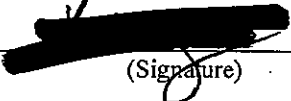
- (1) Is incorporated under the laws of the State; and
- (2) Has bylaws or policies that describe the manner in which the activities or services for which a grant or subsidy is awarded shall be conducted or provided.

Further, a grant or subsidy may be awarded to a non-profit organization only if the organization:

- (1) Has been determined and designated to be a non-profit organization by the Internal Revenue Service; and
- (2) Has a governing board whose members have no material conflict of interest and serve without compensation.

Further, the undersigned authorized representative certifies that this statement is true and correct to the best of the applicant's knowledge.

Kōkua Mau, Inc.
(Typed Name of Individual or Organization)


(Signature)

Rachael S. Wong, MPH
(Typed Name)

January 30, 2008
(Date)

Executive Director
(Title)