

House District 28

Senate District 12

THE TWENTY-FIFTH LEGISLATURE
HAWAI'I STATE LEGISLATURE
APPLICATION FOR GRANTS & SUBSIDIES
CHAPTER 42F, HAWAI'I REVISED STATUTES

Log No: 61-0

For Legislature's Use

Type of Grant or Subsidy Request:

GRANT REQUEST - OPERATING

GRANT REQUEST - CAPITAL

SUBSIDY REQUEST

"Grant" means an award of state funds by the legislature, by an appropriation to a specified recipient, to support the activities of the recipient and permit the community to benefit from those activities.

"Subsidy" means an award of state funds by the legislature, by an appropriation to a recipient specified in the appropriation, to reduce the costs incurred by the organization or individual in providing a service available to some or all members of the public.

"Recipient" means any organization or person receiving a grant or subsidy.

STATE DEPARTMENT OR AGENCY RELATED TO THIS REQUEST

AND PROGRAM I.D. NO. _____

1. APPLICANT INFORMATION:

Legal Name of Requesting Organization or Individual:
Hawai'i Alliance for Arts Education
Dba:
Hawai'i Arts Alliance
Street Address:
1040 Richards St., Suite 301, Honolulu, HI 96813
Mailing Address:
P.O. Box 3948, Honolulu, HI 96812-3948

2. CONTACT PERSON FOR MATTERS INVOLVING THIS APPLICATION:

Name MARILYN CRISTOFORI
Title Chief Executive Officer
Phone # 533-2787
Fax # 526-9040
e-mail arts@hawaiiartsalliance.org

3. TYPE OF BUSINESS ENTITY:

- NON PROFIT CORPORATION
- FOR PROFIT CORPORATION
- LIMITED LIABILITY COMPANY
- SOLE PROPRIETORSHIP/INDIVIDUAL

7. DESCRIPTIVE TITLE OF APPLICANT'S REQUEST:

ARTS FIRST: To support comprehensive standards-based arts education for every elementary student by: implementing use of ARTS FIRST Toolkit; increasing qualified teaching artists; providing professional development for teachers and principals; providing technological access to best practices for all teachers.

(Maximum 300 Characters)

4. FEDERAL TAX ID # _____

5. STATE TAX ID # _____

6. SSN (IF AN INDIVIDUAL): _____

8. FISCAL YEARS AND AMOUNT OF STATE FUNDS REQUESTED:

FY 2007-2008 \$ ALREADY AWARDED
FY 2008-2009 \$ 750,000

9. STATUS OF SERVICE DESCRIBED IN THIS REQUEST:

- NEW SERVICE (PRESENTLY DOES NOT EXIST)
- EXISTING SERVICE (PRESENTLY IN OPERATION)

SPECIFY THE AMOUNT BY SOURCES OF FUNDS AVAILABLE AT THE TIME OF THIS REQUEST:

STATE \$ _____
FEDERAL \$ _____
COUNTY \$ _____
PRIVATE/OTHER \$ _____

TYPE NAME & TITLE OF AUTHORIZED REPRESENTATIVE:


authorized signature

Marilyn Cristofori, Chief Executive Officer
Name & Title

January 2, 2008
date signed

Hawai'i Alliance for Arts Education
ARTS FIRST

Hawai'i State Legislature
Application for Grants and Subsidies
Chapter 42F, Hawai'i Revised Statutes

I. BACKGROUND and SUMMARY

Hawai'i Alliance for Arts Education (DBA Hawai'i Arts Alliance) respectfully requests a grant of \$750,000 for Fiscal Year 2008-09 for ARTS FIRST. ARTS FIRST improves all learning by supporting a comprehensive standards-based arts education for every elementary student. This has been initiated with the second edition of the *ARTS FIRST Essential Arts Toolkit for Grades K-5* designed to align with the revised state education standards. ARTS FIRST also develops qualified teaching artists, provides professional development for teachers, principals and artists, and works toward technological access to the best practices in standards-based, arts-integrated curriculum that links the arts with other core academic subjects.

State of Hawai'i support is vital to the continued impact of the arts as part of education reform and improvement for our state. The Alliance works closely with the other ARTS FIRST Partners¹ and has been able to attract outside funding and provide services that these entities would otherwise be unable to offer. From FY 2002 through FY 2007, ARTS FIRST was supported with \$6,838,699 with 37% from national and county funds, 34.5% from private foundations, businesses and individuals and 28.5% from state general funds. **These state public funds are the key to attracting the 72% of support funds from other sources.** 92% of the total has been expended on programs in Hawai'i to benefit our children, teaching artists, teachers, schools and communities.

1. Brief History of Applicant

Hawai'i Alliance for Arts Education is a key leader of the ARTS FIRST Partners as described in further detail on the next page. Founded in 1980, the Alliance is a statewide private non-profit that champions all arts: dance, music, theatre and visual arts. The Alliance has 100 organizational and over 400 individual members and is the Hawai'i member of the Kennedy Center Alliance for Arts Education Network (KCAEEN), a major program of the John F. Kennedy Center for Performing Arts in D.C. Our mission is to cultivate, sustain and celebrate all the arts as essential to the complete education of every child in Hawai'i and central to a vibrant community.

¹ ARTS FIRST Partners mandated by ACT 306/01 include: State Department of Education, Hawai'i Association of Independent Schools, University of Hawai'i at Manoa College of Education, UHM College of Arts and Humanities, State Foundation on Culture and the Arts, and Hawai'i Alliance for Arts Education.

The Alliance services are offered statewide inclusive of age, ethnicity, geography and socio-economic status. The Alliance adheres to strict fiscal and planning criteria as demanded by the Kennedy Center and has demonstrated its ability to implement and sustain significant programs:

- 'Ohana Arts - *community programs serving at-risk populations*
- The ARTS at Marks Garage - *collaborative arts center in downtown Honolulu*
- ARTS License Plates - *raises funds to benefit arts education in schools*
- Artists in Hawai'i Guide- *supports teaching artists, resource for schools, libraries*
- ARTS FIRST Partners - *leading role in ARTS FIRST Strategic Plan, development and the 2nd edition of the Essential Arts Toolkit, professional development for teachers and teaching artists, Hawai'i Learning Interchange at apple.com/ali/hawaii, U.S. DOE Research: 1) Windward- 2003-2006; 2) Honolulu Arts and Literacy for All - 2006-2010*

Key awards and recognition include:

- Americans for the Arts: 1 of 16 (307 national applicants) Animating Democracy grant
- Americans for the Arts: 1 of 10 (400 national applicants) Steps to Art grant
- Congratulatory Resolutions 2003: State Senate and House of Representatives
- *Keep it Hawai'i Award 2002: Hawai'i Visitors and Convention Bureau*
- National Endowment for the Arts, Challenge America Grant: 1 of 5 fully funded
- National Endowment for the Arts, Arts Learning Grants 2004, 2005: maximum award
- Invited presentations for Kennedy Center Leadership Meetings 2004, 2005, 2006, 2007
- Kennedy Center Alliance for Arts Education grants: 2005, 2006, 2007
- U.S. DOE Research Grant (2003-06) 1 of 35 national awards
- U.S. DOE Research Grant (2006-10), 1 of 34 national awards

ARTS FIRST was initiated when ACT 80/99 named the arts as a core subject in Hawai'i before it was a national mandate; this legislation also called for revised Fine Arts standards and a strategic plan. This was followed by ACT 306/01 naming the ARTS FIRST Partners (aka as the Hawai'i Arts Education Partners) and mandated implementation of the ARTS FIRST *Hawai'i Strategic Plan for Arts Education* by:

Department of Education

Hawai'i Alliance for Arts Education (Hawai'i Arts Alliance)

Hawai'i Association of Independent Schools

College of Arts and Humanities, University of Hawai'i at Manoa

College of Education, University of Hawai'i at Manoa

State Foundation on Culture and the Arts

The ARTS FIRST Partners embraced Affiliates that contribute significantly to the implementation of the *Strategic Plan* in statewide programs.

Maui Arts & Cultural Center

Honolulu Theatre for Youth

ARTS FIRST *Hawai'i Strategic Plan for Arts Education* goals are:

- 1) To guarantee a comprehensive arts education based on the Hawai'i Content and Performance Standards for every elementary student in the state; and
- 2) To enable every high school student to achieve the standards in one or more of the arts disciplines by grade 12.

The Plan is built on four objectives: **Advocacy Research Teaching Standards**

Over the past five years, the ARTS FIRST Partners have advanced the *Strategic Plan*:

- ARTS FIRST Essential Arts *Toolkit* for K-5 Teachers Published August 2003
- ARTS FIRST Essential Arts *Toolkit* for K-5 Teachers, 2nd Ed. Published June 2006
- Hawai'i Learning Interchange apple.com/ali/hawaii
- ARTS FIRST Windward Research Project (U.S. DOE) 2003 - 2006
- ARTS FIRST Arts and Literacy for All (ALA) Project (U.S. DOE 2006 - 2010)
- ARTS FIRST Waiahole Demonstration Project (NEA) 2003 - 2006
- ARTS FIRST Institutes annually
- ARTS FIRST Professional Development Workshops for Teachers
- ARTS FIRST Teaching Artists - 14 artists have now reached Level 3
- Updated and improved Artists-in-the-Schools to a collaborative, partnership model

2. Goals and Objectives

ARTS FIRST strengthens the capacity of all the Partners in delivery of arts education programs that align with the standards. No Child Left Behind requires delivery of standards-based education, and the fine arts are named as a core subject in that legislation.

ARTS FIRST can advance further with the legislative support of a Grant in Aid to demonstrate continued state support which is key to continue attracting private and national funds. ARTS FIRST supports the State Department of Education by helping schools and teachers meet mandated standards; supports the University of Hawai'i by helping design and implement significant pre-service teacher preparation in arts education; supports Independent Schools with professional development and resources such as the *Toolkit*; supports the state arts agency by helping with the improved Artists-in-the-Schools program and professional development for Teaching Artists.

ARTS FIRST Goals are:

- To guarantee a comprehensive arts education based on the Hawai'i Content and Performance Standards for every elementary student in the state; and
- To enable every high school student to achieve the standards in one or more of the arts disciplines by grade 12.

Objectives for the next year FY 2008 -09 are below:

- a) Implement the ARTS FIRST Strategic Plan as extended through 2010 and review needs for the next six more years through 2016;
- b) Augment access to the Hawai'i Learning Interchange Library and create other technological access for effective use of the *ARTS FIRST Toolkit* for all K-5 teachers;
- c) Increase ARTS FIRST Professional Development for educators and principals; and
- d) Emphasize the development of Teaching Artists at both practitioner and pre-service levels to expand this critical workforce for our education system.

a) ARTS FIRST Strategic Plan

The ARTS FIRST Partners named in ACT 306/01 have gained momentum, established awareness about the value of arts in education and need to build on previous successes. The six Partners and affiliates meet each month to ensure the continued collaboration in implementing the strategic goals. These Partners will focus on updating and extending the Strategic Plan through 2016. In order to track and assess the progress, the group will seek an independent, outside Evaluator to consult by meeting periodically with them, reviewing the annual report to the Legislature, assess progress and make recommendations. It has been shown that evaluations are key to the success in attracting both public and private national support.

b) ARTS FIRST Toolkit and Hawai'i Learning Interchange (HLI) Library

This document provides a standards-based framework to integrate the arts into the curriculum linking to other core subjects and is fully titled *The ARTS FIRST Essential Arts Toolkit - Hawai'i Fine Arts Grade Level Guide for the K-5 Classroom Teacher*. It was developed over a three- year period under the guidance of national arts educator and assessment expert, Deb Brzoska, in collaboration with a team from the State Department of Education, University of Hawai'i, Teaching Artists and classroom teachers.

The first edition was published in 2003. The *ARTS FIRST Toolkit* was revised in FY 2005-06 to address the Hawai'i Content and Performance Standards III. The 2nd edition was published in June 2006 and is currently in phase I of dissemination.

The *ARTS FIRST Toolkit* addresses all the Hawai'i Content and Performance Standards in the Fine Arts under three "big ideas":

- How the Arts are Organized (Elements and Principles)
- How the Arts Communicate (Performances and Exhibits)
- How the Arts Shape and Reflect Culture (History and Culture)

The lessons incorporate creating, performing and responding (critical thinking). The *Toolkit* is designed to support the generalist classroom teacher in delivering a sequential, standards-based arts curriculum and features links to other core subjects: math, science, language arts and social studies.

The Hawai'i Learning Interchange (HLI) supports the *Toolkit* and features a library of exhibits that demonstrate delivery of standards-based, arts-integrated lessons at www.apple.com/ali/hawaii. HLI offers video and audio-rich exhibits that demonstrate

classroom teachers delivering standards-based arts-integrated curriculum and guidance for assessment of the lessons. The methods for technological access to the Learning Interchange need to be updated so it can more easily be used by more teachers. It is also apparent that new exhibits need to be developed and distributed. As more teachers begin to implement ARTS FIRST ideas, they are requesting additional technological support to bring "best practices" to the forefront and access to better methods to share exemplary models of teaching arts-integrated lessons.

c) ARTS FIRST Professional Development Educators

In order to effectively use the *ARTS FIRST Toolkit* to deliver standards-based arts education to our students, professional development is needed for educators (principals and teachers). With proper preparation, classroom teachers are able to use the *Toolkit* to prepare and deliver arts-integrated lessons that link to other core subjects (language arts, math, science, social studies) and impact all learning. Professional development is offered in a variety of formats from a one-day workshop to semester-long mentoring. A typical one-day workshop is outlined below:

- introduction of the *ARTS FIRST Toolkit* as the framework to integrate the arts into the curriculum;
- assessment using the three artistic processes - creating, performing, responding (critical thinking);
- hands-on participation in two lessons integrating visual and performing arts with math;
- development of a lesson plan based on the *Toolkit*.

Evaluation is key to designing quality professional development for educators. We need to know what components of professional development are crucial to impacting teacher practice. In May 2007, the Alliance began a teacher recognition program to acknowledge teachers who have taken 30 hours or more of professional development in arts education in the past 2 years. Twenty-five teachers were honored at this first ceremony. We would like to track this original group of teachers over a 2-year period to assess the impact of the professional development on their teaching practices and how new pedagogy has affected student work. We will work with University of Hawai'i's Curriculum Research and Development Group to develop and analyze the research tools for tracking.

Teaching Artists

Since there are no arts specialists in public elementary schools and a very limited number in middle and high schools, continued professional development is needed for artists in order to increase the number of qualified Teaching Artists who work in the schools with students and with educators. We also need more master artists who train emerging Teaching Artists. In collaboration with the State Foundation on Culture and the Arts and the Maui Arts & Cultural Center and with support from the John F. Kennedy Center for the Performing Arts, the Alliance has launched a series of professional development workshops for teaching artists. For the emerging teaching artists, there are workshops in the effective use of the *ARTS FIRST Toolkit* and how to develop standards-based unit and

lesson plans for a successful residency. For the advanced teaching artists, there are workshops in developing and presenting workshops for educators and emerging teaching artists as well as how to advocate for arts education.

There is a need to provide more training for the beginning as well as intermediate level teaching artists in the field. Issues of classroom management, meeting benchmarks and standards, arts integration, assessment, development and learning styles of children must be addressed in professional development if we want delivery of high quality arts education instruction in the classroom. In addition, teaching artists must be kept up to date on the latest research that demonstrates the impact of the arts on all learning.

During the next year, we will continue the Teaching Artist workshops for individuals and organizations. In addition to training in the *Toolkit* and in delivery of standards-based instruction, we provide training in areas such as classroom management, childhood development and learning styles, special needs populations, integrating the arts with other core subjects, and assessment strategies.

We also provide opportunities for emerging Teaching Artists to work under the guidance of a master Teaching Artist in the residency setting as well as to create a peer learning community in which artists can observe and learn from one another.

There are three levels of Teaching Artists:

Level 1 are emerging Teaching Artists who require basic training in the use of the *ARTS FIRST Toolkit* and how to use it to deliver standards-based lessons.

Level 2 Teaching Artists (intermediate level) have been providing residencies in the schools for a variety of years. These artists require continued training in areas such as (but not limited to) standards based instruction, student reflection and assessment, self reflection, and staying up to date on current work in the field.

Level 3 training prepares advanced artists to mentor teachers and to train the emerging artists. These master Teaching Artists are able to guide educators as they write and teach integrated arts curricula. They also prepare and deliver advocacy presentations.

By the end of 2006, we had developed a cadre of 15 **Level 3** Teaching Artists who are prepared to deliver advocacy presentations, mentor teachers and emerging teaching artists, and prepare and deliver professional development for classroom teachers. At the end of 2010, we anticipate that we will be able to add 20 to 30 trained Teaching Artists who will be prepared to provide standards based integrated arts instruction to schools.

In the Alliance's recent Annual Report, national arts consultant Deb Brzoska contributed her thoughts about Hawai'i's teaching artists, "*I believe that Hawaii is leading the trend to include professional Teaching Artists in the important work of educating our children. The teaching artist field is maturing with a culture of shared practice and pedagogy. Hawai'i's Teaching Artists are some of the best I have seen, and ARTS FIRST is investing*

in their continued support and professional development like no where else. Truly exciting work." Deb Brzoska is a consultant with The John F. Kennedy Center for the Performing Arts. Since 2000, she has guided the original work and revisions on the *ARTS FIRST Toolkit*. She has also facilitated many of the professional development workshops for Teaching Artists, teachers, and principals.

3. Public Purpose and Need

Significant national research² over the past six years shows compelling evidence that arts education strongly impacts ALL learning, academic and social, irrespective of socio-economic status. Students in arts-rich schools earn better grades and scores, are less likely to leave school, watch less television, have a more positive self-concept and are more involved in community service. This research clearly demonstrates that arts education is evolving FROM an enhancement activity that can be eliminated without really hurting academic success TO understanding how the arts form an integral conceptual underpinning for traditional academic learning and help students acquire long-term cognitive skills and deepen conceptual knowledge. The advantage of the arts is that they link cognitive growth to social, emotional and academic development and prepare students for work in an economy that will demand high-order skills. Eric Jensen, world-renowned educator/brain researcher maintains that arts are essential to the core curriculum of every school. Other researchers found that "those who study arts outperform 'arts-poor' students by virtually every measure: grades, test scores, attitudes and behavior irrespective of socioeconomic status." Champions of Change The Impact of the Arts on Learning .1999

The following remark summarizes both public purpose and essential need.

*Arts are central to a civil society. Kids who create don't destroy. Arts education needs to be in the elementary and secondary schools through the core curriculum: in the home to foster lifelong learning; at the university level to develop excellence among future teachers and the future job force. We will all benefit from making the arts a core part of the educational system. Our future depends on it. We are moving very, very fast, and the future will be here before we know it.*³

In our state, ARTS FIRST has been successful in attracting outside funding for different research projects. Arts and Literacy for All Project, funded by the U.S. Department of Education, is a four year project (2006-2010) in which four elementary schools (Helemano, Pearl City Highlands, Kuhio, Kamiloiki) will participate. Three other projects

² Champions for Change: The Impact of the Arts on Learning, Arts Education Partnership (AEP), 1999

Critical Links: Learning in the Arts - Student Academic and Social Development, AEP, 2001

Critical Evidence: How the ARTS Benefit Student Achievement, Sandra Ruppert, 2006

The Arts and School Reform, Annenberg Institute, 2003

Arts Education Partnerships, Rand Report, 2004

Putting the Arts in the Picture, Reframing Education 21st century, ed. Nick Rabkin, Robin Redmond, 2006

³ Concluding remarks: Nancy Hanks Lecture on Arts and Public Policy at the Kennedy Center by Terry Semel, immediate past Chair and Co-CEO Warner Bros. and Warner Music Group. March 20, 2000

were 3-year undertakings and were located at Kula Elementary on Maui, Waihole Elementary and three Windward District Schools (Ben Parker, Keolu, Laie). These projects are moving Hawai'i toward the demand for "scientifically-based research" that demonstrates the powerful impact of the arts on all learning. Although our efforts in Hawai'i with ARTS FIRST are beginning to show important progress, we need more resources to engage many more organizations and individuals in vigorously participating in order to reach all children and make a serious difference.

4. Target Population

The constituencies of the ARTS FIRST Partners include all of the people in the state of Hawai'i. The first layer of target audiences are educators and artists all of whom influence and reach our students who will be the beneficiaries. There are more than 280 public schools on seven islands including the Districts of Honolulu, Central, Leeward, Windward on Oahu plus Maui, Kauai and Hawaii Districts. There are 182,798 students and 13,000 teachers. The Independent Schools include 68 educational institutions throughout the state. The teachers in pre-service education programs at the University of Hawai'i are on Oahu, Maui and Hawai'i. Teaching Artists are found in the majority of the Alliance's 100 member organizations, and there are some 200 listed in the Artists in Hawai'i Guide.

5. Geographic Coverage

ARTS FIRST Partners reach statewide. Hawai'i Alliance for Arts Education is an umbrella, statewide organization with over 100 organizational members. When considering the membership of these organizations, the estimated combined membership is over 40,000. The geographic coverage reaches all islands and serves communities from downtown Honolulu to Hana, to Hanalei, to Volcano and connects with every school district in the state.

II. SERVICE SUMMARY and OUTCOMES

1. Scope of Work, Tasks and Responsibilities

As noted above, the Alliance serves the state and the community in multiple ways to promote and support all the arts as essential to a complete education. The Alliance will continue to work collaboratively and closely with the ARTS FIRST Partners to strengthen the capacity of all Partners in delivery of arts education programs that align with the standards as required by No Child Left Behind and by state mandate. The legislative support of a Grant in Aid to demonstrate continued state support will be key to continue attracting significant private and public national funds.

ARTS FIRST supports the State Department of Education by helping schools and teachers meet mandated standards; supports the University of Hawai'i by helping design and implement significant pre-service teacher preparation in arts education; supports Independent Schools with professional development and resources such as at the *Toolkit*;

supports the state arts agency by helping with the improved Artists-in-the-Schools program and professional development for Teaching Artists. Together with the ARTS FIRST Partners, the Alliance will: extend the ARTS FIRST Strategic Plan for six more years through 2016; augment access to the Hawai'i Learning Interchange Library and the *ARTS FIRST Toolkit* for all elementary teachers; and increase ARTS FIRST Professional Development for educators and artists.

2. Timeline for Services

The timeline for services began July 1, 2007 in FY 2007-08 and is continuous over throughout FY 2008-09.

3. Quality Assurance and Evaluation

The Governing Board of Directors monitors the quality of programs, staff and the facility at *The ARTS at Marks Garage*. The Chief Executive Officer reports on a monthly basis to these 21 Directors. In addition, the Kennedy Center requires an annual report which includes the year's accomplishments as compared to the projected work-plan, annual updates projecting three years ahead on the strategic and work-plan, and an Independent Audit in accordance with generally accepted auditing standards in the United States. The management letter from the Independent Auditor is consistently excellent, i.e. with no recommendations for changes in accounting principles, procedures or presentation.

4. State-wide and Community Benefit and Effectiveness

State support will assist the ARTS FIRST Partners to serve our state's quest to improve and re-invent education by expanding and strengthening resources for schools to meet State-mandated requirements. In addition, continuing demonstration of state public funds for arts education is key to attracting significant national and private resources to our state.

Hawai'i Alliance for Arts Education is the member of the national Kennedy Center Alliance for Arts Education Network, a major program of the John F. Kennedy Center for the

I. BACKGROUND and SUMMARY CONTINUED

Performing Arts in Washington DC. There is only one Alliance in each state. This national Network works closely with another national program of the Kennedy Center known as "Partners in Education." There are two Partners in Education programs in Hawai'i - Honolulu Theatre for Youth and Maui Arts & Cultural Center - and we work very closely with both. As a member of the national Alliance Network and the Partners in Education programs, Hawai'i has access to the very best national leaders in arts education as well as best practices from other states across the country. With the expertise of such renowned leaders as Deb Brzoska and Eric Booth, our state has been able to make remarkable progress towards meeting national and state expectations with regard to arts education. With the ARTS FIRST Partners, we have offered Summer Institutes to develop and introduce the *Toolkit*, Professional Development Workshops for Teachers, Mentoring

for Classroom Teachers, Professional Development for Teaching Artists, completed three important Research Projects, and have begun implementation of a fourth project.

The quality of resources for arts education has been upgraded with the *Toolkit* and the HLI. We have reached approximately 300 teachers who in turn impact between 30 to 50 students each. We now propose to double the number of teachers who receive professional development as well as include approximately 60 Principals. We also propose to expand the number of Teaching Artists who can work in tangent with classroom teachers to deliver standards-based, arts-integrated education.

In addition to the direct impact of ARTS FIRST educational programs, the Alliance offers community programs and services that also powerfully influence opportunities for schools and students. These include:

- Annual Arts Excellence Exhibit at The ARTS at Marks Garage, titled *UnderAge Thinking*
- National Symphony Orchestra (NSO) - annual full scholarships that cover lessons, round-trip transportation to D.C., housing, incidentals and professional performance with NSO at Kennedy Center
- Celebrate the ARTS! - Annual concert and awards at Hawai'i Theatre with 300 to 400 subsidized student tickets
- Arts Excellence Schools - Annual awards to four or more public schools for \$3,000 each and three or more independent schools for \$1,000 each to recognize and support exemplary arts programs
- After-School Programs for numerous at-risk children, especially those in public housing located near *The ARTS at Marks Garage* in downtown Honolulu.
- Annual Arts Education Conference - The Alliance partners with SFCA to plan and implement the Governor's Conference on Arts Education servicing 200 - 300 teachers and artists from all islands.

III. FINANCIAL

1. Please see the attached Budget.

2. Anticipated quarterly funding requirements for FY 2008-09 are below.

Quarter 1	Quarter 2	Quarter 3	Quarter 4	Total Grant
\$100,000	\$150,000	\$250,000	\$250,000	\$750,000

IV. EXPERIENCE

A. Necessary Skills and Experience

Since 1980 Hawai'i Alliance for Arts Education has promoted and served ALL the arts as essential to a complete education. Over the past 27 years, the Alliance led statewide conferences, professional development for artists and teachers, model arts programs in schools and communities and annually recognizes Arts Excellence schools. The Alliance led the advocacy and support for the legislation (ACT 306/01) mandating revision of the state Fine Arts standards and codifying the ARTS FIRST Partners (aka "Hawaii Arts Education Partners"). The Alliance's statewide programs serve all ethnic groups and ages, pre-school through seniors. ARTS FIRST programs include all Neighbor Islands and all ethnic groups.

The work of Hawai'i Alliance for Arts Education is nationally recognized by the John F. Kennedy Center for the Performing Arts in Washington D.C. with annual awards of support for programs and operations up to the eligible maximum. The review panels consistently commend us for excellence, and our Alliance is considered one of the outstanding national models. Other recognitions and awards that support the Alliance skills and experience are listed on page 2 of this document.

The expertise of the Alliance staff is widely considered to be exemplary. Biographies on the key staff are included in section V of this document. The Chief Executive Officer, the Education Director, the Business Director and Creative Director of *The ARTS at Marks Garage* all serve on committees both within the state and on a national level. The Chief Executive Officer has been invited annually to make presentations at the annual Kennedy Center Leadership conference. She also served on the National Leadership Committee for the Kennedy Center. The Education Director works closely with the state arts agency, the DOE, Honolulu Theatre for Youth and Maui Arts & Cultural Center to develop and implement professional development for teachers and artists. The Business and Creative Directors of *The ARTS at Marks Garage* serve on several downtown boards such as Arts District Merchants as well as Arts with Aloha.

B. Facilities

The majority the ARTS FIRST programs and services are offered on-site at DOE school campuses or the University of Hawai'i locations at Manoa, Leeward, Windward, Hilo and Kauai. Additional facilities that have been made available for Institutes and the Teaching Artists include the Mid-Pacific Institute campus, the Maui Arts & Cultural Center and the YWCA of Oahu in Honolulu. All these facilities are ADA accessible. The after-school programs and the annual student arts exhibits take place at *The ARTS at Marks Garage* in downtown Honolulu which is ADA complaint.

V. PERSONNEL: PROJECT ORGANIZATION and STAFFING

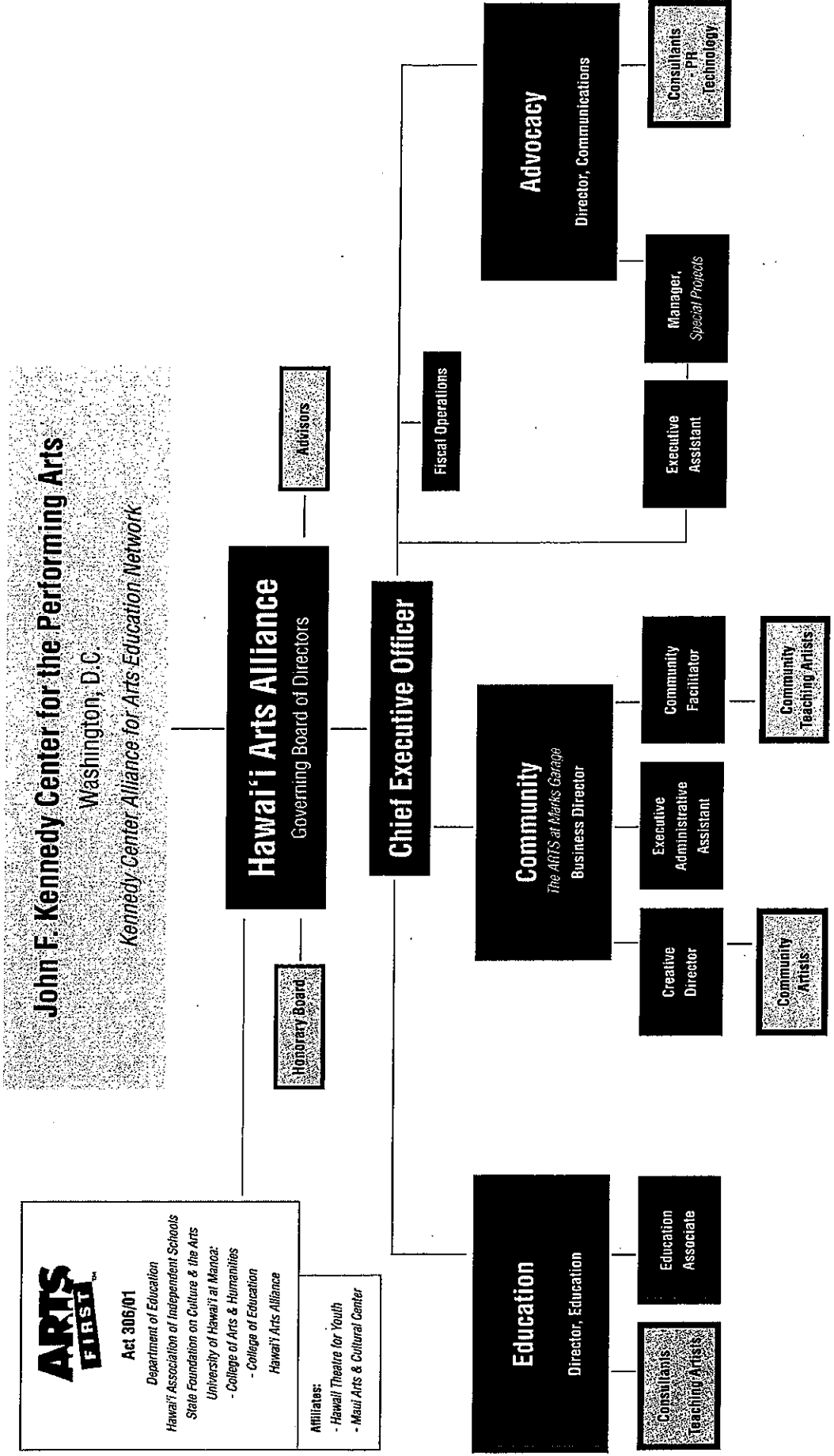
A. Proposed Staffing, Staff Qualifications, Supervision and Training

MARILYN CRISTOFORI, Chief Executive Officer is a key leader in the formation of the ARTS FIRST Partners. She has served the Alliance since 1994, Her academic degrees include: B.A. in Education from Stanford University; Masters in Dance/Theatre from California State University; and an Executive MBA (honors) from University of Hawai'i at Manoa. Her professional credentials include Director of national Summer Arts Festivals; management of Dance Pioneers; Director of Dance Education for the Rhode Island State Council on the Arts; Executive Producer of award-winning PBS documentaries; and performer professional ballet and modern dance companies. She was a dance/movement specialist for the National Endowment for the Arts, Artists-in-Schools. She serves on the Kennedy Center National Leadership Committee. In Hawai'i, she is on the Executive Board for the Honolulu Culture and Arts District, the Affiliate Graduate Faculty for Dance and Theatre at the University of Hawai'i. She is past Director of the Hawai'i Association for the Education of Young Children and Professor Emerita of California State University, Chico.

LEI AHSING, Education Director, oversees the ARTS FIRST education programs including annual Institutes and Teaching Artist workshops. She earned her M.F.A in Theatre and Dance and a B.A. in Psychology from the University of Hawai'i at Manoa and has 20 years teaching experience in arts education. She has served the Alliance since 1996. Previously, she coordinated Hawai'i State Dance Council's Creative Movement program. Ms. Ahsing coordinates the Arts & Literacy for All Research Project a U.S. DOE funded program that studies the impact of a standards based arts education program on student scores in reading, writing and teacher pedagogy, attitudes, and practices. She coordinated the previous U.S. DOE funded ARTS FIRST Windward Research Project, She assisted the Department of Education in developing the revised Hawai'i Content Standards for the Arts, and she was a key member of the Curriculum Framework Team that developed the *Essential Arts Toolkit for the K-5 Classroom Teacher: Hawai'i Fine Arts Grade Level Guide*. She works closely with the Hawai'i Department of Education, Hawai'i State Foundation on Culture and the Arts, UHM Outreach College, and Maui Arts and Cultural Center to implement Alliance programs.

MARCIA PASQUA, Project Coordinator, is a visual artist specializing in printmaking, sculpture and painting. She has exhibited locally and internationally in group and juried shows. She has taught children and adults as a Level 3 Teaching Artist and worked as an Artist Mentor in Alliance programs. She has served in residencies for Artists in the Schools and as an Ambassador for "Museum in a Box" for Honolulu Academy of Arts. She has taught Creative Arts Education (Art for Elementary School Teachers at Chaminade University and Figure Sculpture through the UHM Outreach College. Currently she assists Ms. Ahsing in coordination of ARTS FIRST Professional Development Workshops for Teachers.

Hawai'i Arts Alliance Organizational Chart



ARTS FIRST™
Act 306/01
Department of Education
Hawai'i Association of Independent Schools
State Foundation on Culture & the Arts
University of Hawai'i at Manoa
- College of Arts & Humanities
- College of Education
Hawai'i Arts Alliance

Affiliates:
- Hawai'i Theatre for Youth
- Maui Arts & Cultural Center

DEBORAH BRZOSKA, National Arts Educator co-facilitated the first Arts in Education National Leadership Institute in Washington D.C. and served as leader for the National Assessment of Educational Progress in the Arts. She is a presenter and consultant for the Kennedy Center for Performing Arts, the Getty Center, N.Y. Alliance for Arts Education.

ERIC BOOTH, National Arts Educator is on the faculty and serves as Artistic Director of Mentoring at Juilliard. He is also on the faculty for Kennedy Center of the Performing Arts and has been a national speaker and consultant for arts education for over ten years. He is the editor of the national publication, *The Teaching Artist Journal*.

B. Organization Chart

Please see the attached Organization Chart on the following page.

VI. OTHER

A. Litigation

There is no pending litigation in which Hawai'i Alliance for Arts Education is a party.

B. Licensure or Accreditation

Not applicable.

BUDGET REQUEST BY SOURCE OF FUNDS
(Period: July 1, 2008 to June 30, 2009)

Applicant: Hawai'i Alliance for Arts Education		One Year Budget: July 1, 2008 - June 30, 2009			
BUDGET CATEGORIES	Total State Funds Requested (a)	Private Contributions (b)	National Sources (c)	Earned Income & Local Grants (d)	TOTAL
A. PERSONNEL COST					
1. Salaries	82,000	44,000	151,000	40,000	317,000
2. Payroll Taxes & Assessments	25,000	20,000	55,000	12,000	112,000
3. Fringe Benefits (included)	0	0	0	0	0
TOTAL PERSONNEL COST	107,000	64,000	206,000	52,000	429,000
B. OTHER CURRENT EXPENSES					
1. Airfare & Inter-Island travel	4,000	0	6,000	5,000	15,000
2. Insurance	2,000	0	0	10,000	12,000
3. Lease/Rental of Equipment	0	0	0	0	0
4. Lease/Rental of Space	20,000	2,000	20,000	20,000	62,000
5. Staff Training	15,000	0	10,000	0	25,000
6. Supplies: Arts & Education	20,000	0	15,000	5,000	40,000
7. Telecommunications	25,000	5,000	0	10,000	40,000
8. Utilities	20,000	0	7,000	7,500	34,500
9. Teaching Artist Fees	150,000	0	20,000	5,000	175,000
10. Classroom Teachers Stipends	70,000	0	20,000	10,000	100,000
11. Principals Honorariums	10,000	0	0	10,000	20,000
12. Ground Transportation	10,000	0	0	2,000	12,000
13. Education Consultants	47,000	10,000	20,000	0	77,000
14. Evaluator	35,000	0	0	10,000	45,000
15. Technical/Video Consultants	70,000	0	20,000	30,000	120,000
16. Technological Supplies	70,000	0	5,000	5,000	80,000
17. Arts Excellence Awards	0	5,000	0	26,000	31,000
18. Marketing and Public Relations	30,000	5,000	2,500	20,000	57,500
19. Printing, Copying	20,000	5,000	10,000	5,000	40,000
20. General and Administrative	25,000	15,000	30,000	15,000	85,000
TOTAL OTHER CURRENT EXPENSES	643,000	47,000	185,500	195,500	1,071,000
C. EQUIPMENT PURCHASES	0	0	0	0	0
D. MOTOR VEHICLE PURCHASES	0	0	0	0	0
E. CAPITAL	0	0	0	0	0
TOTAL (A+B+C+D+E)	750,000	111,000	391,500	247,500	1,500,000
SOURCES OF FUNDING		Budget Prepared By:			
(a) Total State Funds Requested	750,000	Marilyn Cristofori		533-2787	
(b) Private Contributions	111,000	Name		Phone	
(c) National Sources	391,500				
(d) Earned Income & Grants	247,500	Signature of Authorized Official		Date	
		Marilyn Cristofori, Chief Executive Officer			
		Name and Title			
TOTAL REVENUE	1,500,000				

**DECLARATION STATEMENT
APPLICANTS FOR GRANTS AND SUBSIDIES
CHAPTER 42F, HAWAII REVISED STATUTES**

The undersigned authorized representative of the applicant acknowledges that said applicant meets and will comply with all of the following standards for the award of grants and subsidies pursuant to section 42F-103, Hawaii Revised Statutes:

- (1) Is licensed or accredited, in accordance with federal, state, or county statutes, rules, or ordinances, to conduct the activities or provide the services for which a grant or subsidy is awarded;
- (2) Comply with all applicable federal and state laws prohibiting discrimination against any person on the basis of race, color, national origin, religion, creed, sex, age, sexual orientation, or disability;
- (3) Agree not to use state funds for entertainment or lobbying activities; and
- (4) Allow the state agency to which funds for the grant or subsidy were appropriated for expenditure, legislative committees and their staff, and the auditor full access to their records, reports, files, and other related documents and information for purposes of monitoring, measuring the effectiveness, and assuring the proper expenditure of the grant or subsidy.

In addition, a grant or subsidy may be made to an organization only if the organization:

- (1) Is incorporated under the laws of the State; and
- (2) Has bylaws or policies that describe the manner in which the activities or services for which a grant or subsidy is awarded shall be conducted or provided.


Further, a grant or subsidy may be awarded to a non-profit organization only if the organization:

- (1) Has been determined and designated to be a non-profit organization by the Internal Revenue Service; and
- (2) Has a governing board whose members have no material conflict of interest and serve without compensation.

Further, the undersigned authorized representative certifies that this statement is true and correct to the best of the applicant's knowledge.

Hawaii Alliance for Arts Education DBA Hawaii Arts Alliance

(Typed Name of Individual or Organization)



(Signature)

January 2, 2008

(Date)

Marilyn Cristofori

(Typed Name)

Chief Executive Officer

(Title)

**Hawai'i
Arts
Alliance**



*A member of
the Kennedy Center
Alliance
for Arts Education
Network*

January 3, 2008

Senate Committee on Ways and Means
State Capitol, Room 210
Honolulu, HI 96813
Attn: Aaron Nyuha

Dear Mr. Nyuha:

Please find the Grant-in-Aid Application for The Twenty-Fifth Legislature, Hawai'i State Legislature, and one copy, herewith.

If you have questions or concerns, please feel free to email or call me if you have any questions.

In advance, thank you.

*Visit our
Community
Project:
The ARTS at
Marks Garage
www.artsatmarks.com*

Sincerely,

Marilyn Cristofori
Chief Executive Officer

P.O. Box 3948
Honolulu, Hawai'i
96812-3948
Phone: (808) 533.2787
Fax: (808) 526.9040
arts@hawaiiartsalliance.org
www.hawaiiartsalliance.org

enclosures: 02