

House District 28

Senate District 12

THE TWENTY-FOURTH LEGISLATURE
HAWAII STATE LEGISLATURE
APPLICATION FOR GRANTS & SUBSIDIES
CHAPTER 42F, HAWAII REVISED STATUTES

Log No: 32-0

For Legislature's Use Only

Type of Grant or Subsidy Request:

GRANT REQUEST - OPERATING

GRANT REQUEST - CAPITAL

SUBSIDY REQUEST

"Grant" means an award of state funds by the legislature, by an appropriation to a specified recipient, to support the activities of the recipient and permit the community to benefit from those activities.

"Subsidy" means an award of state funds by the legislature, by an appropriation to a recipient specified in the appropriation, to reduce the costs incurred by the organization or individual in providing a service available to some or all members of the public.

"Recipient" means any organization or person receiving a grant or subsidy.

STATE DEPARTMENT OR AGENCY RELATED TO THIS REQUEST
JUDICIARY - ADMINISTRATION DEPARTMENT
AND PROGRAM I.D. NO. JUD 601

1. APPLICANT INFORMATION:

Legal Name of Requesting Organization or Individual:
The Children's Alliance of Hawaii, Inc.
Db/a:

Street Address: 1100 Alakea Street, Suite 400
Honolulu, Hawaii 96813
Mailing Address: 1100 Alakea Street, Suite 400
Honolulu, Hawaii 96813

2. CONTACT PERSON FOR MATTERS INVOLVING THIS APPLICATION:

Name ALFRED HERRERA

Title President

Phone # (808) 599-2955 x 215

Fax # (808) 599-59095

e-mail herrera@cahawaii.org

3. TYPE OF BUSINESS ENTITY:

- NON PROFIT CORPORATION
- FOR PROFIT CORPORATION
- LIMITED LIABILITY COMPANY
- SOLE PROPRIETORSHIP/INDIVIDUAL

7. DESCRIPTIVE TITLE OF APPLICANT'S REQUEST:

PROGRAMS AND SERVICES FOR SEXUALLY ABUSED CHILDREN AND YOUTH

(Maximum 300 Characters)

4. FEDERAL TAX ID #: [REDACTED]

5. STATE TAX ID #: [REDACTED]

6. SSN (IF AN INDIVIDUAL): [REDACTED]

8. FISCAL YEARS AND AMOUNT OF STATE FUNDS REQUESTED:

FY 2007-2008 \$ 320,000.00

FY 2008-2009 \$ 320,000.00

9. STATUS OF SERVICE DESCRIBED IN THIS REQUEST:

- NEW SERVICE (PRESENTLY DOES NOT EXIST)
- EXISTING SERVICE (PRESENTLY IN OPERATION)

SPECIFY THE AMOUNT BY SOURCES OF FUNDS AVAILABLE AT THE TIME OF THIS REQUEST:

STATE \$ 112,499

FEDERAL \$ 0

COUNTY \$ 0

PRIVATE/OTHER \$ 60,000

TYPE NAME & TITLE OF AUTHORIZED REPRESENTATIVE:

[REDACTED SIGNATURE]

AUTHORIZED SIGNATURE

ALFRED HERRERA, PRESIDENT

NAME & TITLE

01/26/07

DATE SIGNED

Application for Grants and Subsidies

I. Background and Summary

Organization Background

The Children's Alliance of Hawaii, Inc. is a 501 (c) (3) non-profit organization. *Our mission is to provide care and support for sexually abused children, offering hope for the future.* We are located in Honolulu, Hawaii, and serve the island of Oahu. The vast majority of the children we serve come from low to very low income homes, or are in foster care, or are living in residential group homes. Each year we serve between 300 and 400 sexually abused children on Oahu. In 2007, the organization is considering providing services to the children on Kauai due to a known lack of resources on that island.

We are a pioneering model, one of the first in the nation, originally incorporated by the Rotary Club of Honolulu in 1987 to assist the Hawaii State Judiciary in creating The Children's Justice Center, a place where abused children can be interviewed in a safe, neutral, and child friendly environment. As the non-profit partner for the Children's Justice Center, we provide support to the children and families who unfortunately must visit it. The interview experience is highly traumatic, often leading to dramatic life-altering changes affecting all concerned. During that time we provide emergency food and clothing provisions. We also contribute equipment, multidisciplinary training, and supplies to aid Children's Justice Center and its staff. This becomes an important initial point of entry to the continuum of services the Children's Alliance offers to children through our programs.

Goals and objectives

The Children's Alliance of Hawaii is the only organization whose sole focus is sexually abused children. There are very few programs offered specifically to assist sexually abused children on a statewide or even national level. We offer truly unique programs that provide a continuum of services. The collective goals for this continuum are:

- 1) Assist the sexual abuse victim regain the joy of their lost childhood
- 2) Help create or maintain a stable living environment
- 3) Improve their self-esteem
- 4) Let them know they are not alone in their struggle
- 5) Increase their capacity to express their feelings and emotions
- 6) Develop caring relationships
- 7) Empower them to create a strategic plan for their life.

The three programs are as follows:

Enhancements - designed to "enhance" the lives of these children by providing goods and direct services that will help them become stable, enrich their development, and restore the special experiences of childhood that may have been lost. This program focuses on the child's individual needs, offering support for school related functions, summer programs, music, dance, art lessons, and sports activities. Sexually abused children and their families who are experiencing financial hardship and are struggling to meet their basic needs can obtain assistance with short term rental subsidies, clothing and food vouchers, and transportation and basic utility

services. Sexually abused children who are placed into foster care can receive a special "care package" from the organization ensuring that they have the basic necessities of new clothing, new toiletry items, and a backpack with new school supplies to help them with their transition. The Children's Alliance of Hawaii believes celebrating birthdays, life milestones, and holidays is very important in order for the child to create new positive memories to offset the bad ones. We support this belief by providing all of our eligible children with special birthday, milestone and Christmas presents; and opportunities to celebrate them with those who are closest to them. For youth with severe or problematic behaviors (i.e. running away, truancy, or aggression), the Enhancements services are being used repeatedly, over time, to positively reinforce the youth when they have demonstrated control over a specific targeted behavior.

H.E.A.R.T. (Healing Emotions with Art and Recreation Together) - an evidence based, gender specific six month program targeting elementary age children and adolescents. It offers four six-week group sessions, each consisting of art therapy, expressive movement, outdoor adventure, and therapeutic horseback riding. These four therapeutic components have linkages to a variety of theoretical orientations for clinical intervention, including the psycho-social realm, symbolic imagery, body awareness, mastery and control, skill building, and practical problem solving. H.E.A.R.T. was conceived to provide experiences that address the social emotional needs of sex abuse victims based on the premise that these children can be "reached" through a hands-on experiential approach to intervention. Children who have been sexually abused often experience obstacles to normal social emotional development as a result of their abuse history. H.E.A.R.T. is based on the premise that discharging feelings can reduce some of the intensity and overwhelming effects on behavior. The over arching goals of this program include increasing self esteem, developing a group that understands they are not alone in their struggle, and increase the youth's ability to express their feelings and emotions. The H.E.A.R.T. program is the only program of its kind in the nation.

Ho'omaka Teen-Teaming - an individualized teaming program, based on "best practices" and resiliency theory, designed to assist young adults and adolescents who are struggling with direction, life circumstances, and exhibiting symptoms of trauma from sexual abuse. The objective of this program is to provide an avenue by which sexually abused youth can build caring relationships, learn to navigate the system, maintain a positive trajectory, and attain a dignified independence. This program utilizes the specially created "Charting Your Goals: Life-Planning Guide For Teens" workbook by Dan Dahl and Randolph Sykes as a therapeutic tool to help the youth pinpoint their life goals. The youth take in-depth looks into their past, present and future in order to create a strategic plan for their life, concentrating in five areas: health, relationships, personal growth, finances and career. We use volunteers and experts in the community to collaborate as a "team" to provide the practical guidance needed to achieve the goals; and act as the support network that is customarily present in stable families. This approach is fashioned on the belief that positive outcomes for young adults who have experienced abuse are influenced by having healthy interactions with adults. These interactions will provide experiences that instill self-worth, reinforce a sense of achievement, encourage healthy attachments, and offer a sense of belonging to counteract abuse symptoms of loneliness and depression.

Public purpose and need to be served

Unfortunately, sexual abuse is a relatively common experience in the lives of children. The Child Trauma Academy chapter of the Encyclopedia of Crime and Punishment, 2001, reported that one out of three females and one out of five males have been victims of sexual abuse before the age of 18 years. According to the Honolulu Police Department Sex Crimes Detail statistics there were 661 child victims of sex offenses on Oahu in 2003 and 576 in 2004. It is estimated that over the last 18 years there were approximately 8,000 to 10,000 child sexual abuse victims on Oahu. Statistics show that sexually abused children are vulnerable to many social problems that have mental, physical and spiritual repercussions for the child, family and our community. Left untreated, they are at very highly at-risk for serious and sometimes life-threatening social problems, including early pregnancy, substance abuse, homelessness, low educational achievement, mental health disorders, unemployment, suicide, and criminal activities. The after affect can lead to an enormous burden and cost to the public at large. Consider these statistics:

Sexually abused children are at a threefold risk for substance abuse, (*Childhood Sexual Abuse: Impact on a community's mental health status, 1992, K.D. Scott*)

Approximately 31% of women in prison report that they were sexually abused children, (*US Department of Justice, 1991*)

74% of women who had intercourse before age 14 report a history of forced sexual intercourse, (*Alan Guttmacher Institute, 1994*)

62% of pregnant and parenting adolescents had experienced molestation or rape prior to their first pregnancy, (*Boyer & Fine, 1993*)

Approximately 95% of teenage prostitutes have been sexually abused, (*CT Center for Prevention of Child Abuse, 1992*).

Target population to be served

The target population for our programs is sexually abused children and youth. Sexually abused youth from infancy to nineteen are eligible for our various programs.

Many of the children we serve are referred by State agencies including the Children's Justice Center, Department of Human Services, Department of Health, Department of Education, Family Court and Juvenile Judiciary Services. We also receive referrals from Child & Family Services, Sex Abuse Treatment Center, Catholic Charities, Tripler Medical Center and private therapists. We also receive referrals from the primary care-giver of sexually abused children.

Geographic coverage

The Children's Alliance of Hawaii is located in Honolulu, Hawaii, and serves the island of Oahu. The organization is currently considering providing limited services to abused children on Kauai due to a known lack of resources on that island.

Community Benefit

An operations grant from the State of Hawaii will allow us to continue our valuable programs that positively impact the lives of sexually abused children on Oahu. As they move through the healing process into recovery, our important work not only helps the abused child, but also helps our community by creating citizens who attain stability, will avoid risky behaviors, stop the cycle

of abuse, and be prepared to face life's challenges when they transition to adulthood and independence.

II. Experience and Capability

A. Necessary Skills and Experience

The Children's Alliance of Hawaii has been providing supportive programs for sexually abused children for twenty years. We are a small organization with an inherent ability for a quick turn around and effective response to the needs of these children. We have a dedicated Board of Directors, a highly competent and experienced staff, and a strong pool of both Master's level interns and concerned community member volunteers. We also utilize the advice of ad-hoc participants from the Child Sex Abuse Interagency Team, who offer guidance and direction.

Over our twenty years of community service, we have built an extensive volunteer program and a strong community partnership network. Community Partners (such as Marimed, SoulWorks, Therapeutic Horsemanship of Hawaii, Foster Family Programs, Girl Scouts) and volunteers (from First Presbyterian Church, Hawaii Pacific University, Argosy University, private and public schools, and other community organizations) enable us to provide necessary goods and services, and offer our programs for sexually abused children on Oahu.

B. Quality Assurance and Evaluation

We believe that program evaluation is critical to overall effectiveness. Quality assurance, using both standardized and anecdotal measurements, is incorporated into each of our various programs.

Hoomaka Teen Teaming - Outcomes will be determined on an individual basis by the accomplishment of the Team's action plan. Specific steps will be tracked at each Team meeting. Overall success will be based on the youth reaching their self identified life goals. The Rochester Evaluation of Asset Development for Youth, (READY) will be given at the completion of the program. These outcomes include an evaluation of basic social skills that have changed since program onset including self-control, empathy, communication, and decision making capacity. The youth's perception of their relationships with the adults who facilitate the program and the overall program effectiveness will also be measured.

H.E.A.R.T. Program - The Rosenberg Self-Esteem Scale will be used at the point of Intake and then to measure outcomes after 6 months at the close of each of the program groups. The referring sources will identify behavioral challenges on the Intake Application and target one specific behavior for change. The referring source's perception of behavior change will be assessed by them at the end of the program. The Rochester Evaluation of Asset Development for Youth, (READY) a youth outcomes measure, will be given at the completion of each program component, every 6 weeks.

Enhancements Program -- Quality assurance is measured by the delivery of the necessary goods and services requested by the referring case workers and therapists. Intermittent follow-up is made with the referring sources to track the timely supply of the service or goods and each

individual child's progress. We also receive letters from the recipient children informing us of the powerful impact of the "Enhancement" provided.

On an organization level, we have completed a strategic planning process and use the plan as a guide to stay focused on our goals and objectives, and ensure that we are able to complete our mission.

C. Facilities

Our office facility is located on the 4th floor at 1100 Alakea Street, in downtown Honolulu. Our facilities meet ADA standards. The space is ample and allows us to operate our programs and projects effectively. We are conveniently located, and offer our clients and volunteers a unique, confidential and secure environment. This is especially important to those we serve, as they have issues concerning trust and personal safety.

III. Personnel: Project Organization and Staffing

A. Proposed Staffing, Staff Qualifications, Supervision and Training

Our program team is headed by our Director of Programs, Jan Yu, who has a Master's Degree and over 21 years of experience providing services for abused children. She works with the organization's President, Alfred Herrera, who has a Bachelor's degree and over 16 years of non-profit management and human services experience. Together, they are responsible for the design and implementation of our programs. They are supported by a dedicated group of Master's level interns from local universities. They are also supported by a subcommittee of the Board of Directors, which includes members with Doctorate degrees; and members of the Child Sex Abuse Interagency Team, who offer advice and direction. Kimberly Bartenstein, Director of Development, contributes to our programs by gathering community support and in-kind contributions for our programs and organizing volunteer participation. It is part of the Children's Alliance of Hawaii's plan in 2007 to hire a Program/Admin Assistant to help with program delivery and coordination, and assist with the on-going administrative needs of the organization. This new position will enable the organization to increase its capacity to serve more children.

Our H.E.A.R.T. program uses the services of experienced specialized contract professionals. We work with Dr. Shannon Simonelli, a licensed art therapist with a private practice called SoulWorks. Expressive movement is provided by Aileen Chong-LeBlanc who has a Master's in Public Health, is a social worker and studied dance with the Twyla Tharpe Dance Company and has been teaching dance since 1977, most recently with the Rhonda Kimura Ballet School. We continue our on-going relationship with The Therapeutic Horsemanship of Hawaii Inc., to offer a therapeutic equestrian experience with Dana Vennen who is an NARAH certified riding instructor. We work with Marimed, an experiential maritime and outdoor treatment program.

B. Organization Chart

See Attached

IV. Service Summary and Outcomes

A. Scope of work, tasks and responsibilities

We are requesting funding from the State of Hawaii to assist us in the execution of our programs and special projects.

H.E.A.R.T. - The H.E.A.R.T. program has the capacity to serve 30 - 40 children over a one year period ranging in age from 9 to 18 years old, all of whom have been sexually abused. This proposal outlines four 6 month sessions, one for young boys and one for young girls, (ages 9-12) and one for adolescent boys and one for adolescent girls (ages 13-18). Each group is designed to run with approximately 10 children or adolescents who participate in the activities. Each component is concentrated, for about 6 weeks, with all four components running a six month course.

Hoomaka Teen Teaming - Hoomaka Teen Teaming is a customized and individualized program with the capacity to serve approximately 20 - 25 youth in a one year period. Each youth will participate in a minimum of two teaming meetings, and will have a written action plan designed to meet their specific goals. Youth with more challenging obstacles will participate in as many teaming meetings as is necessary to attain success. All youth will receive a follow-up contact by the Children's Alliance, approximately 8 weeks after the final teaming meeting, to ascertain if additional assistance is needed.

Enhancements - Through our Enhancements Program 250 - 300 unduplicated sexually abused children and their affected siblings will be served. The Enhancements "goods and services" program is dependent on the generosity of the community at large. This outcome is dependent on the receipt of available funding. The degree of the on-going need of each child served determines the overall capacity for this program. On average, we serve 20 children a month, many of whom receive on-going services throughout the year.

It is our goal to offer a continuum of programs and services for each child. Our quantitative data reflects our philosophy to encourage referring sources to access as many programs as necessary for each child. Therefore, cumulative output numbers of children served will include duplication. Unduplicated numbers of children served can be quantified for each program.

B. Projected annual timeline for achieving results or outcomes

Full funding of this request will allow us to fulfill the following outcomes"

Hoomaka Teen Teaming - provide teaming services to 20 - 25 sexually abused youth in a 12 month period.

H.E.A.R.T. - provide 30-40 sexually abused youth with the activity based programs in a 12 month period.

Enhancements - Provide a total of 250 - 300 sexually abused children with "enhancing" or necessary goods and services in a 12 month period.

V. Financial

Budget

See Attached Budget Form

VI. Other

A. Litigation – Not Applicable

B. Licensure or Accreditation – Not Applicable

**DECLARATION STATEMENT
APPLICANTS FOR GRANTS AND SUBSIDIES
CHAPTER 42F, HAWAII REVISIED STATUTES**

The undersigned authorized representative of the applicant acknowledges that said applicant meets and will comply with all of the following standards for the award of grants and subsidies pursuant to section 42F-103, Hawaii'i Revised Statutes:

- (1) Is licensed or accredited, in accordance with federal, state, or county statutes, rules, or ordinances, to conduct the activities or provide the services for which a grant or subsidy is awarded;
- (2) Comply with all applicable federal and state laws prohibiting discrimination against any person on the basis of race, color, national origin, religion, creed, sex, age, sexual orientation, or disability;
- (3) Agree not to use state funds for entertainment or lobbying activities; and
- (4) Allow the state agency to which funds for the grant or subsidy were appropriated for expenditure, legislative committees and their staff, and the auditor full access to their records, reports, files, and other related documents and information for purposes of monitoring, measuring the effectiveness, and assuring the proper expenditure of the grant or subsidy.

In addition, a grant or subsidy may be made to an organization only if the organization:

- (1) Is incorporated under the laws of the State; and
- (2) Has bylaws or policies that describe the manner in which the activities or services for which a grant or subsidy is awarded shall be conducted or provided.

Further, a grant or subsidy may be awarded to a non-profit organization only if the organization:

- (1) Has been determined and designated to be a non-profit organization by the Internal Revenue Service; and
- (2) Has a governing board whose members have no material conflict of interest and serve without compensation.

Further, the undersigned authorized representative certifies that this statement is true and correct to the best of the applicant's knowledge.

The Children's Alliance of Hawaii, Inc

(Typed Name of Individual or Organization)


(Signature)

01/26/07

(Date)

Alfred Herrera

(Typed Name)

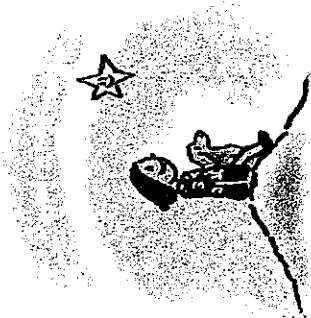
President

(Title)

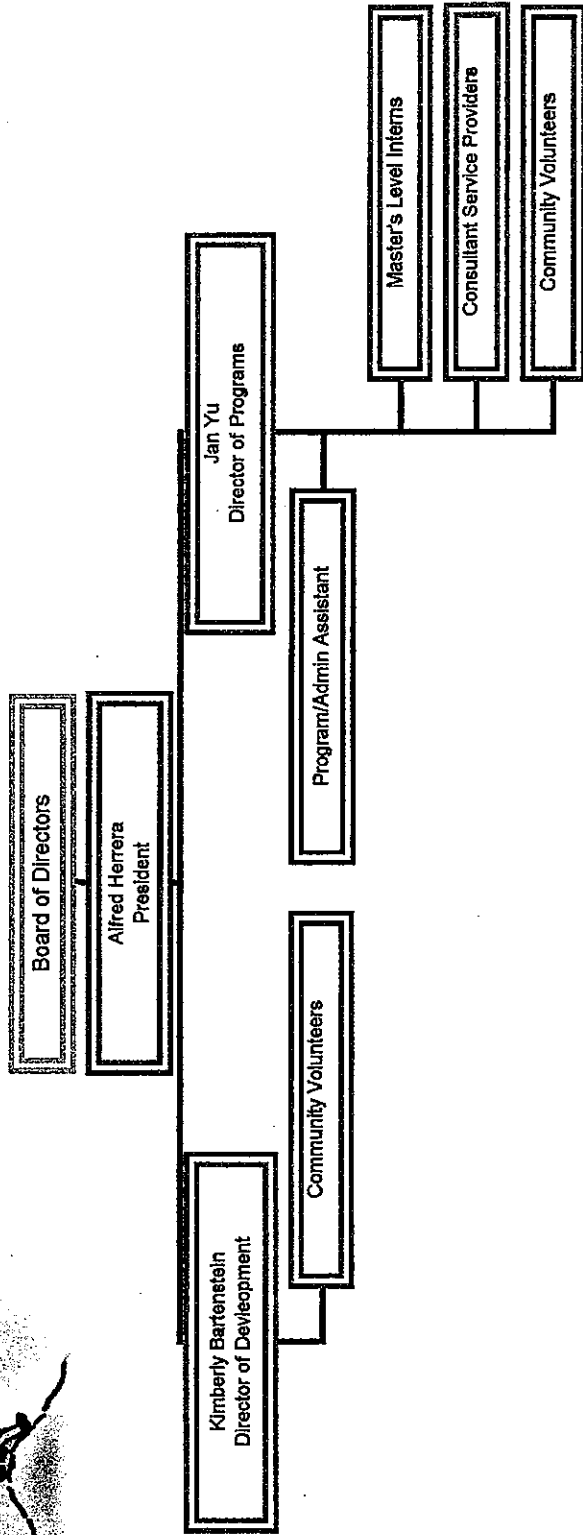
BUDGET REQUEST BY SOURCE OF FUNDS
(Period: July 1, 2007 to June 30, 2009)

Applicant: The Children's Alliance of Hawaii

BUDGET CATEGORIES	Total State Funds Requested (a)	(b)	(c)	(d)
A. PERSONNEL COST				
1. Salaries	260000	140000	41000	
2. Payroll Taxes & Assessments	26000	14000	4100	
3. Fringe Benefits	6000	2000		
TOTAL PERSONNEL COST	292000	156000	45100	0
B. OTHER CURRENT EXPENSES				
1. Accounting & Audit Fees	28000	10000		
2. Board of Directors Expenses		6000		
3. Contract Services (program)	50000	10000	20000	
4. "Enhancement" Goods/Services	36000		140000	390000
5. Equipment Lease/Maintenance	4000			
6. Info Technology	20000			
7. Insurance	6000	6000		
8. Interest Expenses		72000		
9. Legal Fees/Consultation		6000		
10. Maintenance - Facility	125000			
11. Mortgage Payments		120000		
12. Office Supplies	10000			
13. Outreach Expenses/Newsletter	20000	6000		
14. Postage	1000	6000		
15. Program Supplies	28000		2000	
16. Special Event Expenses		129000		
17. Staff Training Expenses	6000			
18. Telephone / Utilities	10000			
19. Volunteer Support	4000			
TOTAL OTHER CURRENT EXPENSES	348000	371000	162000	390000
C. EQUIPMENT PURCHASES	0	0	0	0
D. MOTOR VEHICLE PURCHASES	0	0	0	0
E. CAPITAL	0	0	0	0
TOTAL (A+B+C+D+E)	640000	527000	207100	390000
SOURCES OF FUNDING		Budget Prepared By:		
(a) Total State Funds Requested	640000	Alfred Herrera	599-2955 x 215	
(b) Organization Fundraising	527000	Name	Phone	
(c) Private Foundations	207100			1/26/2007
(d) In-kind Contributions	390000	Signature of Authorized Official		Date
TOTAL REVENUE	1764100	Alfred Herrera, President		
		Name and Title		



The Children's Alliance of Hawaii, Inc Organization Chart





The Children's Alliance
OF HAWAII, INC.

January 26, 2007

SHERI ROBISON
Chairwoman

ALLEN KUBOTA
Vice Chairman

MARY WORRALL
Vice Chairman

C. SCOTT WO
Secretary

CRAIG WARREN
Treasurer

A. JOSEPH FADROWSKY, III
Past Chairman

DIRECTORS:

TOM BARLOW
BROOKS BLANCO
TIMOTHY Y.W. CHANG
CONNIE FLATTERY
SUSAN PANG GOCHROS
ROBERT HALE
GAIL MUKAIHATA HANNEMANN
KAINOA LEE
BRENDAN DAMON ETHINGTON
GWEN PACARRO
ALICE ROBINSON
DIANE THOMPSON, MD
KATHRYN MUNENO THOMPSON
MICHAEL A. TONGG, ESQ.
JOJO WATUMULL
VIRGINIA WEINMAN
A. JAMES WRISTON, JR.

ALFRED J. HERRERA
PRESIDENT

Senate Committee on Ways and Means
Attn: Mr. Aaron Nyuha
State Capitol, Rm. 210
Honolulu, HI 96813

Dear Mr. Nyuha,

On behalf of the Children's Alliance of Hawaii and the hundreds of sexually abused children we help each year, I am submitting the enclosed Grant-in-Aid Application.

Each year there are between 600 and 800 children on Oahu who are believed to be victims of sexual abuse. It is believed that this figure does not reflect the true magnitude of the problem, with many more children unwilling or unable to disclose their assault. We are obliged to help these innocent victims heal from their physical and emotional wounds. Without help, many will turn to ever increasing risky behaviors, becoming a threat and danger to themselves and the community, and perpetuating the cycle of abuse.

We are grateful for this opportunity to request funds for our programs and services for sexually abused children. With your support, we can offer hope for their future.

If you have any questions, please do not hesitate to call me at 599-2955 ext 215.

Thank you for your assistance.

Sincerely,

Alfred Herrera
President