



Representative **NADINE K. NAKAMURA**



MARCH 2023

DISTRICT 15: HANAIEI, KĪLAUEA, PRINCEVILLE, ANAHOLA, KĀPA'A, WAILUA



MEET MY OFFICE STAFF:

Ben Viernes, Chief-of-Staff
Phil Roque, Office Manager
Angela Tumaneng, Legislative Aide

Sarielyn Curtis, Committee Clerk



STAY CONNECTED!

@NAKAMURANADINE

REPNAKAMURA.COM

Aloha Friends & Neighbors:

We're halfway through the 2023 Legislative session and I'm pleased that there are many good bills moving forward to build affordable housing, provide tax relief to working families, charge a visitor green fee, address the impacts of climate change, and invest in our natural resources.

Highlighted in this newsletter is Kapa'a High School Career Academies. Under the leadership of Principal Tommy Cox and instructors, our students are gaining real-life skills, career pathways, and college credits. I also want to give a huge shoutout to the Kapa'a High School girls basketball team for winning the 2023 Hawai'i Athletic Association Division II Basketball State Championships, the first Division II basketball title in Kapa'a history!

This is my first session as the House Majority Leader, and I'm tasked to lead a 45-member majority party. It's a challenging position, but very gratifying to work with a team committed to improving the lives of Hawai'i's residents.

Please contact my office if you have any questions or concerns. We're here to listen, and help to improve the community we all love.

Mahalo piha,

Nadine



Welcoming the Kaula Farm Bureau gang on Agriculture Day at the State Capitol.



Meeting with Kanuikapono Public Charter School students at the Capitol.



Celebrating the start of the legislative session with my mother and my brother.

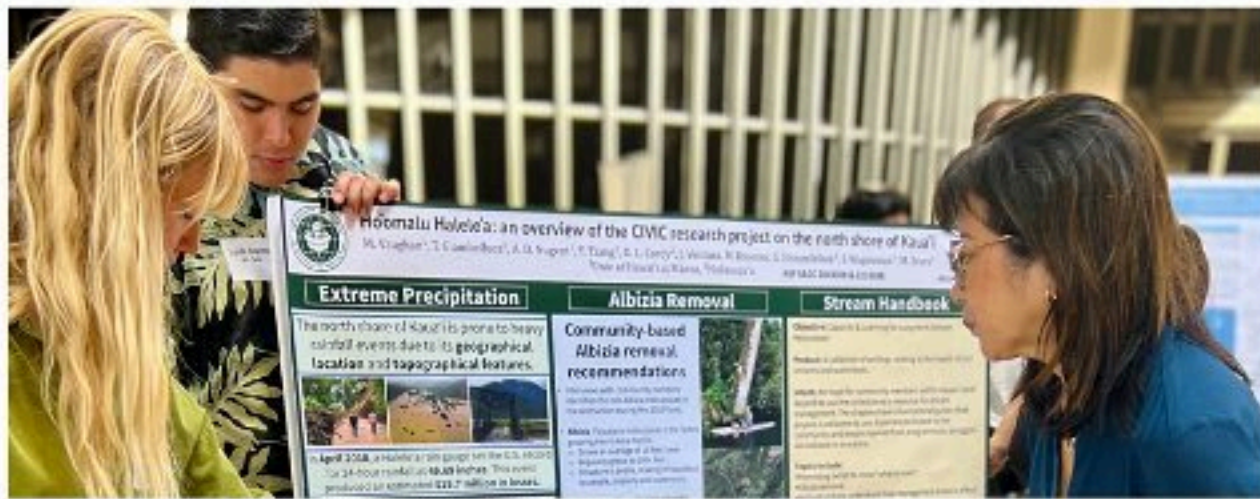
MID-SESSION BILLS MOVING FORWARD

HB1397: SUPPORTIVE HOUSING

Establishes a supportive housing pilot program for people who are chronically homeless with mental illness, substance abuse disorders, developmental disabilities, and other special needs.

HB1395: KAPA'A HOUSING

Appropriates planning & design funds the redevelopment of the Kapa'a public housing project site in Kapa'a, Kaua'i.



Discussing the Ho'omaluu Halele'a Kaua'i project at UH Research Day.



Greeting Paulina, Welina Wong, Bea Kaaumoana, & Megan Wong at Opening Day visit at the State Capitol.

HB1394: NA ALA HELE TRAILS

Appropriates funds to the Dept. of Land & Natural Resources for operating costs & personnel to manage hiking trails as part of the Na Ala Hele trail & access program.

HB952: NATURAL RESOURCES

A majority package bill, which appropriates funds to the department of land & natural resources to address the impacts of climate change in the State.

HB390: HAWAII PROMISE PROGRAM

Provides scholarships for the unmet direct cost needs of qualified students at any four-year University of Hawaii campus who meet certain eligibility criteria.

HB1204: PUBLIC EDUCATION

Establishes the public-school education scholarship within the University of Hawaii to provide students with tuition in return for a service commitment to teach in a public-school classroom or Hawaii public charter school.



Greeting community residents at the Samuel Mahelona Memorial Hospital Master Plan Community meeting in January.



Getting feedback on draft master plan from surrounding community residents.

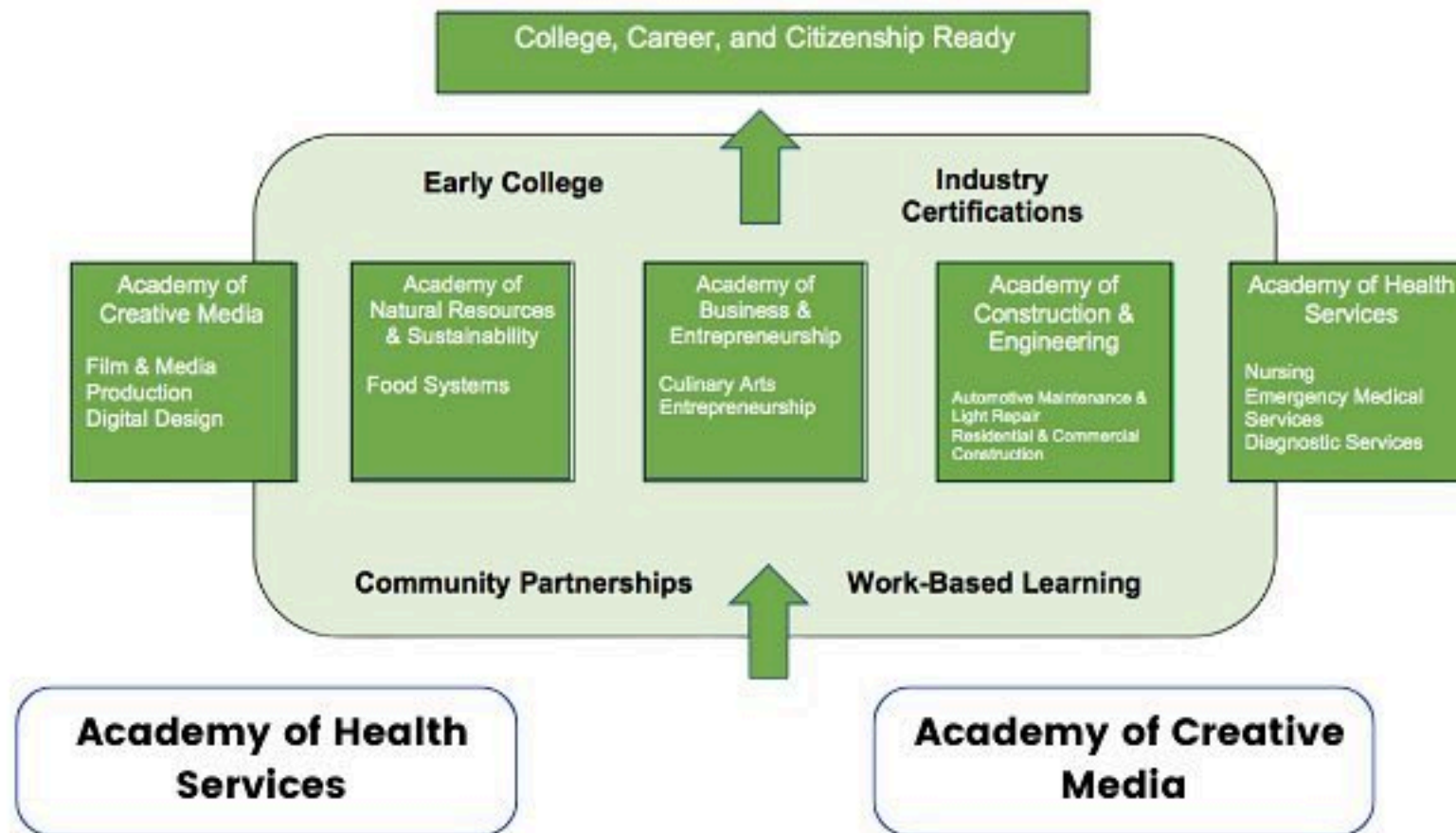
HB1353: UNEMPLOYMENT INSURANCE

Appropriates \$36M to upgrade the unemployment insurance system, as well as fund for positions needed to support this crucial upgrade.

HB551: HEALTH

Prohibits the sale of flavored tobacco products & the mislabeling of e-liquids as nicotine free. Authorizes the Dept. of Health to appoint, commission or contract for services of inspectors.

COMMUNITY HIGHLIGHT: KAPA'A HIGH SCHOOL CAREER ACADEMIES



Offering three pathways with over 150 students, this Academy is award winning-for good reason. This Academy is preparing students for future careers, such as nurses, EMT's, Firefighters, Radiologists, Lab technicians, & more. The Academy provides a mock hospital with an up-to-date clinical lab area and the actual equipment used in real medical settings. We have seen through the pandemic how important the health profession is, and our students of Kaua'i are the future.

The arts are important, and Kapa'a High School focuses on them. Students in the Academy of Creative Media are able to choose from two pathways, Film & Media Production and Digital Design.

Students in the Film & Media Production pathway participated in a competition on Oahu in January 2023 and placed in 5 out of 7 categories. Additionally, selected students will be traveling to Long Beach, California in March to attend and compete in the Student Television Convention.



Students conducting health assessments and routine check-ups.



Learning about the Health Services academy from Instructor Kara Kitamura.



Students refurbishing every component of a golf cart in the Automotive & Light Repairs track.

Academy of Health Services

Academy of Creative Media

Academy of Construction & Engineering

Early College Program

Academy of Natural Resources & Sustainability

The Academy of Construction & Engineering offers work-based learning & industry certifications for Automotive Maintenance & Light Repair, and Residential & Commercial Construction. Through a partnership with the Hawai'i Carpenters Apprenticeship Training Fund, students have the opportunity to earn carpenter apprentice curriculum credit and preparation for paid summer internships.

In 2022, the Academy partnered with Habitat for Humanity to help build affordable housing, providing them with real world experience while helping the Kaua'i community.

Kapa'a High School's partnership with Kaua'i Community College & Chaminade University allows students to take college courses while fulfilling their high school requirements, giving them a head start on higher education.

Currently there is a small pilot program of students who are starting the Early College Program in their sophomore year, earning 60 credits & a liberal arts degree by graduation in 2025. Other partnerships with KCC & Chaminade allow students to gain an A.S. degree or a STEM math academic certificate. The Early College Program is a foundational pillar in the mission of Kapa'a High School which is to prepare all students for college, career, & citizenship in the 21st century.

The Academy of Natural Resources & Sustainability offers the Food Systems pathway, preparing students for future careers as farmers and other important roles in the agriculture field.

Students in this pathway receive the opportunity to take a course working with agricultural groups in the Kaua'i community, with guidance from a Future Farmers of America advisor. This course helps students become better farmers, as well as consumers.



REPRESENTATIVE

Nadine K. Nakamura



Hawai'i State Capitol
415 S Beretania St.,
Honolulu, HI 96813
Room 439
808-586-8435



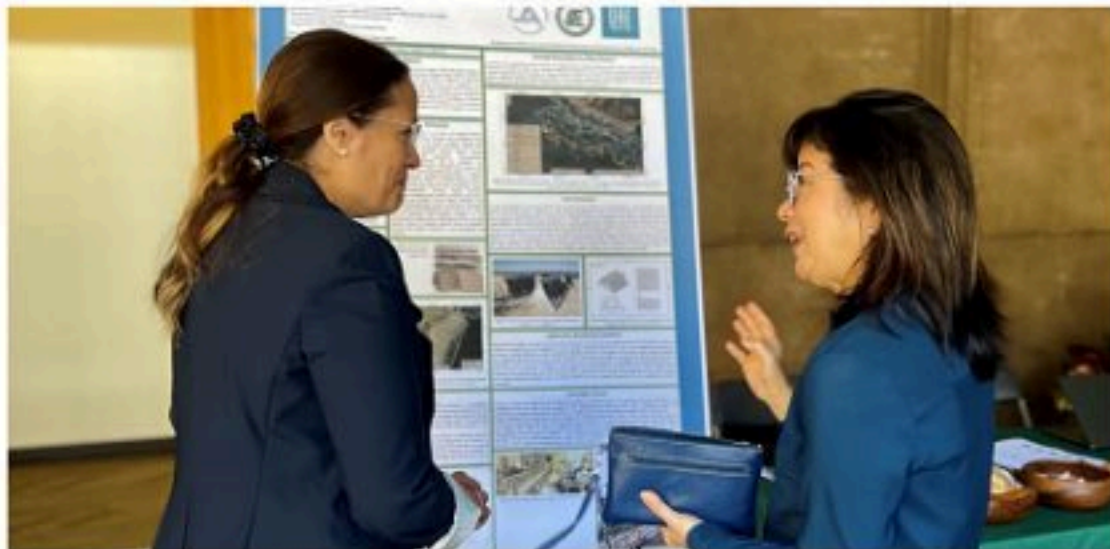
STAY CONNECTED!



Welcoming Representative Luke Evslin at his swearing in ceremony in February.



Representing the Hawai'i House of Representatives on PBS Insights show.



Professor Oceana Puananieli Francis sharing the UH engineering shoreline structure research project to increase the beach front at Wailua Beach.



Celebrating Opening Day with Council Members Bernard P. Carvalho, Jr., KipuKai Kualii, & Felicia Cowden.

