



Senator Joy San Buenaventura

Senate District 2, Puna

Chair, Senate Committee on Health & Human Services ● Vice Chair, Committee on Hawaiian Affairs
● Committee on Government Affairs ● Committee on the Judiciary

@sensenbuenaventura

August 2025 E-Newsletter

2025 LEGISLATIVE RECAP

Aloha:

During the interim, I will be sending out a print newsletter to recap some of the highlights of the 2025 legislative session. The information to be included in the print newsletter is also covered in my e-newsletters, so if you are currently subscribed to my e-newsletter and would like to help us reduce paper waste, please email j.honda@capitol.hawaii.gov. Please include your name, mailing address, and a short note confirming that you would like to opt out of the print newsletters.

Joy San Buenaventura

POHOIKI DREDGING PROJECT BREAKS GROUND, JUNE 9th, 2025

On the day dredging of Pohoiki started: Missing from this photo who really helped were Mililani Trask, former DLNR Deputy Bob Masuda, John Kitahara who worked for months without pay and Ashley Kierkiewicz who brought John in to manage community engagement. I remember in august 2018 when the flow had just ended meeting with fishermen at Sacred Hearts led by Mililani Trask. There was no legislative session until January so I met with Megan, of DLNR, (blue cap) and House speaker Saiki to see if there was any money that can be used for a study since FEMA money could not be used.



Photos: DLNR Finn McCall who is in charge of the project, Rep. Ilagan who also pressured the House, me, Megan who helped initially find the money to study different sites, Kuulei and Leila both of whom kept up the pressure to ensure Puna fishermen can fish from Pohoiki. The offshore site has been the source of 20-30 % of the ahi statewide.

POHOIKI DREDGING PROJECT BREAKS GROUND (cont.)

I recently did a follow up visit to Pohoiki and was pleased to see the progress. The project is expected to be completed sooner than expected.



PAHOA TRANSIT HUB AND LIBRARY

Pahoa Library is moving forward after county acquires site for the transit hub. To learn more about the Pahoa Transit Hub, please visit: <https://www.heleonbus.hawaiicounty.gov/home-transit>

Hub and Spoke Transit: What is It?



- This is a way of routing transportation through a central location, or hub.
- Spokes are the routes going in and out of the hub.
- By meeting up at the hub, passengers on the shorter routes (using smaller vehicles can get off and transfer onto the longer routes (which use longer vehicles).
- This makes service more efficient than if the long routes had to stop everywhere.
- The concept has been in use among airlines since 2001.
- In the past ten to fifteen years, transit systems have been converting to hub and spoke.

Pāhoā Public Library Background

In 1991 the Hawai'i State Public Library System (HSPLS) created a Master Plan to guide their future growth and facility needs. In 2017 they created a new plan to better implement the goals of their master plan while considering current demographics of the Puna district.



Three core values:

- ❖ **Community / Educational / Cultural Hub**
Gathering place, educational opportunities and provide opportunities for cultural practices.
"this core value reinforces the library as a beacon for knowledge, arts, and culture"
- ❖ **Access**
Provide access to collections/materials, government services and officials through forms and resources
"Give Puna residents and library users access to the entire world"
- ❖ **Collection and Preservation**
Hardcopy and digital materials, preservation of our history

Possible Library Features

Expanded Physical Collection



Program Spaces



Technology & Digital Learning



Reading Areas



Meeting Rooms

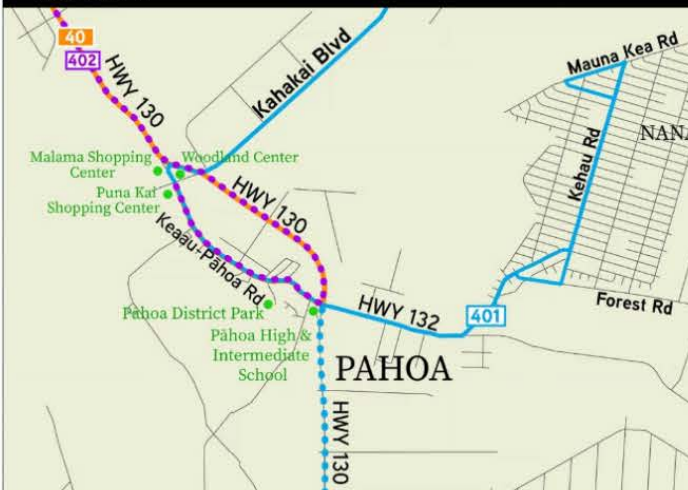


Major Lines for Puna

Hele-On Bus Route - #40, #401, #402

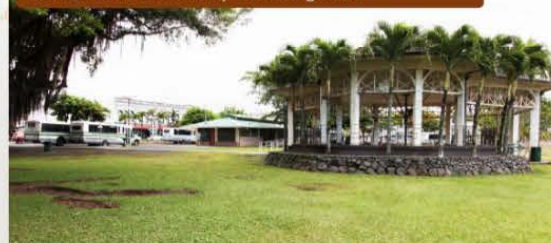


INSET 1



Possible Transit Hub Amenities

Pavilion and Community Gathering Place



Goodwill Dropoff Box



Bike Parking and Storage



Bike Share

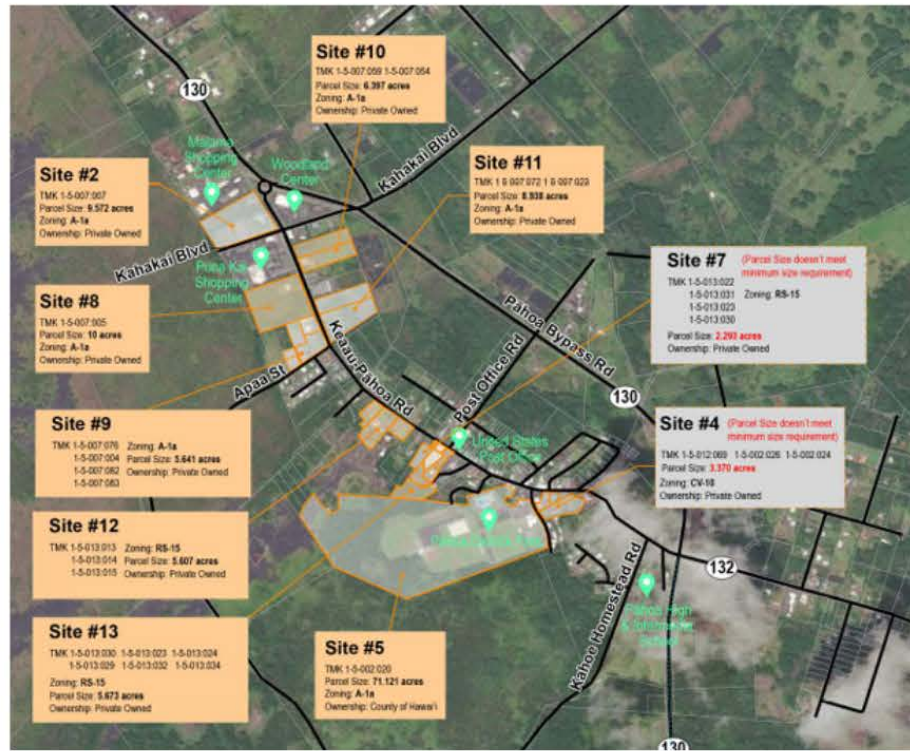


PAHOA TRANSIT HUB AND LIBRARY (cont.)

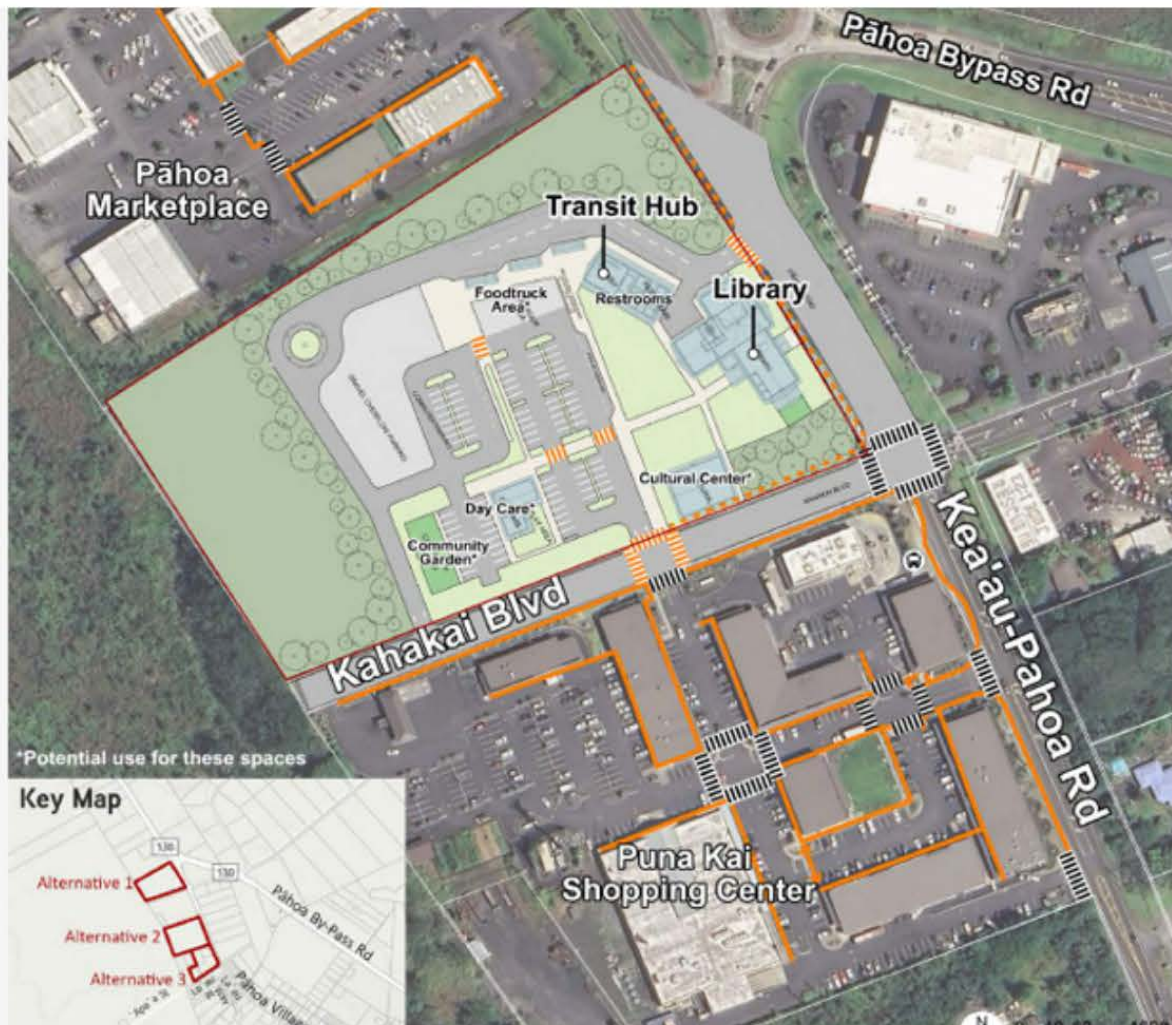
What We Heard

- **Site #2** was the overwhelming preference from community polls
 - Alternative 1 (Preferred Alternative)
- **Accessibility** around the Pāhoia Town Center is important, emphasis on the need for sidewalks for **safety**
- Make it look like **Pāhoia Town**
- Puna needs community **gathering spaces**
- Need bike storage, garden, and space for kids
- Easy access to **technology** and government **resources**

- The size and appearance of the hub should reflect Pahoia.
- Make sure the hub and associated parking area is ADA compliant, giving priority to the safety of pedestrians and children who may be in the parking lot. Consider the goals of Vision Zero and the needs of the disabled.
- Lighting and security are important. Have a locked gate after hours.
- Soften area with landscaping.



- Consider environmental conditions (rain, wind) in choosing the orientation of the shelters.
- Like the “stool” design for seating, avoids people sleeping on the benches.



ROM Construction Cost

Transit Hub	\$13 million
Library	\$17 million

Phased and Function Independent of Each Other





When legislative session is ended, I do my best to be educate myself on the subject matter of my committee. Early Childhood education and proposing a new state plan that take advantage of the various agencies to support our keiki.

Honoring the Hawaii Job Challenge Academy Class of 2025.



I attended the first graduation class of women's court and a few days later I attended the signing of a bill making Women's court permanent. These specialized courts are very hands-on requiring more monitoring than the Judiciary can normally afford with its backlog, but it is balanced with low to no recidivism for the graduates. Women's Court was one created by the Women's Prison project, a bipartisan effort spearheaded by Republican Gov. Linda Lingle, whose aim was to reduce recidivism and incarceration (incarceration for women grew 800% since 1980) and which inmate population were more likely to be victims of domestic violence.



With Sen. Fevella, Rep. Olds, and Sen. Moriawaki after passing HB943 in conference. HB943 expands early intervention and comprehensive support services for those who are at risk of homelessness.

With Rep. Martin, Rep. Kapela, Rep. Amato, and Sen. Rhoads celebrating the passage of SB292. SB292 establishes protections for survivors of sexual exploitation who seek medical or law enforcement assistance.

PUNA CAPITAL IMPROVEMENT PROJECTS



\$200,000

Pohoiki safe swim area feasibility study and site selection.



\$2,500,000

Puna Makai and Puna Mauka alternate route selection studies.



\$80,000,000

SPRB for a new primary healthcare facility to serve Pahoia and Keaau.



\$25,000,000

New ambulatory care center in Keaau.



\$3,100,000

Family Assessment Center in Puna and Waianae.



HABITAT FOR HUMANITY HAWAI'I ISLAND

\$350,000

GOVERNOR JOSH GREEN HAS AUTHORIZED
RELEASE OF **\$350,000** FOR HABITAT FOR
HUMANITY HAWAI'I ISLAND.

FUNDING FOR THE CAPITAL IMPROVEMENT
PROGRAM (CIP) GRANT-IN-AID (GIA) PROJECT
WILL BE USED FOR THE CONSTRUCTION OF
AFFORDABLE HOUSING UNITS ON HAWAI'I ISLAND.

*"Mahalo for your work on behalf of the residents
of your district to secure these funds.
Projects such as these are critical components of
the public infrastructure and contribute
to building a better home for our kūpuna, keiki, and
all the residents of Hawai'i."*

-Office of the Governor

SENATOR JOY A. SAN BUENAVENTURA
SENATE DISTRICT 2





PATCH

Supporting Hawaii's Child Care Needs

PRESCHOOL OPEN DOORS



For the 2025-2026 POD Program Year
(July 1, 2025 - June 30, 2026)

We're kicking off a brand new year – and we're here to help YOU apply!

Come talk story with our friendly staff and receive assistance with your Preschool Open Doors (POD) application.

 **JUL 17** Starting July 1st - We're open and ready for you!

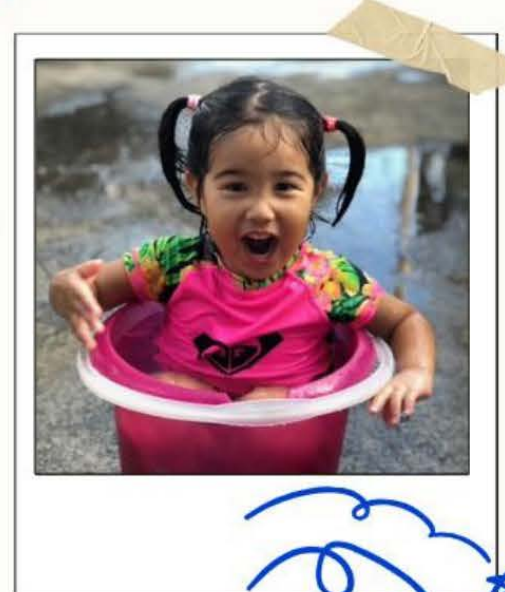
👉 What to Bring:


- ✓ 2 months of income (June & July 2025)
- ✓ Birth certificate for your keiki
(Children must be born 8/1/2020-7/31/2022)

Let's get your child ready for preschool – and give them a head start!

 26 Waiianuenue Ave.
Hilo, HI 96720

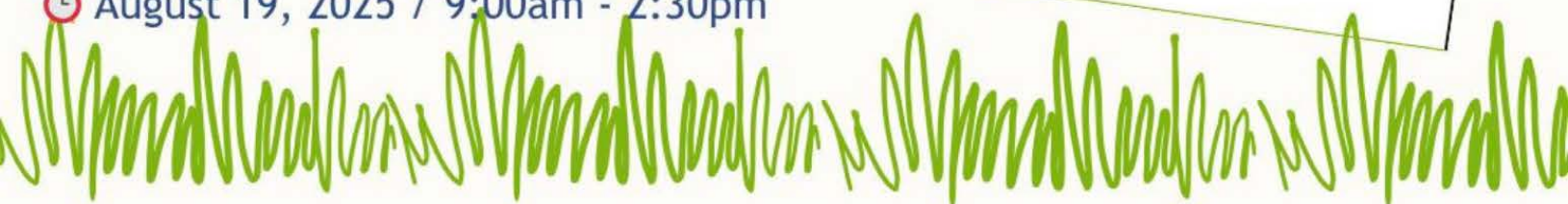
 August 19, 2025 / 9:00am - 2:30pm

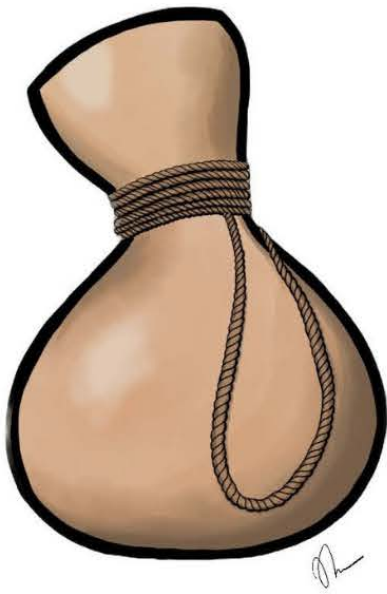


 808.791.2130

 www.patchhawaii.org

 PODadmin@patch-hi.org





LAULIMA

Shaping Hawai'i Island's Future, Together

The County of Hawai'i Department of Research and Development is conducting a brief resident sentiment survey that will be repeated every four years.

Why this Survey is Important

This is the first time there has been a coordinated effort to regularly collect and document resident sentiments and values. The survey results will be shared online, and will be used by agencies, service providers, legislators, and funders to make policies and investment that will meet the needs of our communities.

*Please share with your family, co-workers,
friends, and neighbors.*



Scan this QR Code to take the survey.

This survey is anonymous,
No personal information will be collected or shared.
This survey closes July 31, 2025

Your 'Āina, Your 'Ohana, Your Voice.

Visit www.hawaiicounty.gov/laulima



Department of Research and Development
25 Aupuni Street, Room 1301, Hilo, HI 96720
Phone (808) 961-8366 | Email: chresdev@hawaiicounty.gov | www.rd.hawaiicounty.gov
The County of Hawai'i is an Equal Opportunity Provider and Employer

BEWARE OF TEXT SCAM INVOLVING BOGUS UNPAID TRAFFIC CITATIONS



The Hawai'i State Judiciary is warning the public about a scam that threatens drivers over nonexistent traffic citations. People statewide are receiving text messages alleging to be from the Department of Motor Vehicles (DMV). The texts say that unless payment is made for unpaid traffic citations, the recipients driving privileges and vehicle registration will be suspended, they will be assessed a "service fee," and their credit score will be affected.

Please know, you will not get texts, calls, or emails about unpaid traffic citations from the state courts or DMV unless you contacted them first either in person, in writing or via phone with a specific question. Generally, all communication from the Judiciary regarding unpaid citations is handled through the U.S. mail.

Anyone unsure whether they have an unpaid traffic citation should search by first and last name and also by license plate number in eCourt Kokua, the Judiciary's public online case look-up system. People who have been issued citations can check the status of those citations by using the "case search" function in eCourt Kokua.

Legislative Reference Bureau: Public Access Room

Legislature's Website

The Legislature site provides quick and easy access to the information you need in order to participate in the lawmaking process.

[Visit the Legislature site](#)

The Public Access Room (PAR) provides the public with information, facilities, and services to assist them as they engage and participate in the State legislative process. PAR's website includes guides on how to track measures, submit testimony, and subscribe to hearing notices.

To learn more, please visit: <https://lrb.hawaii.gov/par/>