

# SENATOR DONNA MERCADO KIM

PROUDLY SERVING  
DISTRICT 14



## LILIHA PUUNUI 'ĀLEWA NEIGHBORHOOD BOARD COMMUNITY REPORT

### Senate to Take Action on Judicial Appointments



**Hawaii State Judiciary**

On August 21-22, the Senate will convene a special session to take action on Judicial appointments. These appointments are subject to Senate confirmation.

The Senate will take up the Governor's appointment of **Jordon J. Kimura** as Circuit Judge for the Circuit Court of the First Circuit (O'ahu).

The Senate will also act on Chief Justice Mark E. Recktenwald's three appointments, **Robert J. Brown**, **David M. Hayakawa**, and **Erika E. Ireland**, to fill three vacancies in the District Court of the First Circuit.

### Red-Light Safety Program Update

The Hawaii State Department of Transportation's (HiDOT) Lee Nagano said the red-light camera pilot project designed to effect change in motorist behaviors and reduce speeding is working. Red-light cameras have been installed at 10 designated intersections on Oahu, including Likelike Highway and School Street. She said there is now wider public awareness of the red-light camera installations at intersections that have a history of crashes and injuries. The Likelike Highway and School Street red-light cameras were installed in April 2023, and the number of citations as of July 3, 2023 is listed below:

- 549 citations (north-east approach)
- 127 citations (north-west approach)
- 57 citations (south-west approach)
- 81 citations (south-east approach)

DOT said it will continue to evaluate the effectiveness of the program at the six-month mark as well as the one-year mark of the red-light camera installation at this particular intersection. Visit <https://hidot.hawaii.gov/highways/red-light-safety-program/>



Hawaii State Capitol, Room 218  
415 S. Beretania St. Honolulu, HI 96813

Phone: (808) 587-7200  
Fax: (808) 587-7205

Email: [senkim@capitol.hawaii.gov](mailto:senkim@capitol.hawaii.gov)  
Website: [www.capitol.hawaii.gov](http://www.capitol.hawaii.gov)

KAPALAMA · 'ĀLEWA · KALIHI · KALIHI VALLEY · FT. SHAFTER · MOANALUA GARDENS & VALLEY · RED HILL

August 2023

## Night Work Begins on the Pali Highway Resurfacing Project

The Hawaii Department of Transportation (HiDOT) announced that it has scheduled nighttime work on the Pali Highway from Vineyard Boulevard to the Wyllie Street Interchange from Aug. 20, 2023 to the end of November 2023, weather permitting. This is part of the Pali Highway Resurfacing Project.

Paving operations are to occur nightly, from Sunday nights through Friday mornings, from 7:00 p.m. to 5:00 a.m. Motorists can expect one to two lane closures at a time, with one lane always remaining open in both directions. HiDOT said that with this increased production, it expects the impact on traffic to lessen. Electronic message boards will be posted with closure information. Special duty police officers will be on-site assisting with traffic control. For more details regarding the nighttime closures, call the 24/7 Hotline at (808) 945-1111.



## Maui Fire Relief Donation Drive

In response to the devastating blaze that impacted our neighbors on Maui, the Hawaii State Senate Maui delegation organized a Maui Fire Relief Donation Drive at the State Capitol on August 10 to 11, 2023. The collection of donated items included toiletries, diapers, formula, toys, clothing, new bedding, new pillows, household goods, and non-perishable food items.

Anyone wishing to make donations to help communities and families recover on Maui can do so through:

Maui Strong Fund established by the Hawaii Community Foundation  
<https://www.hawaiicommunityfoundation.org/maui-strong>.

Maui Food Bank <https://mauifoodbank.org/donate/>

Maui United Way <https://mauiunitedway.org/disasterrelief>

The Salvation Army <https://mauiunitedway.org/disasterrelief>

Maui Humane Society <https://www.mauihumanesociety.org/donate-olx/>



# Let's Connect!

Sign up to receive periodic district information and updates

Send your name and email address to [senkim@capitol.hawaii.gov](mailto:senkim@capitol.hawaii.gov)

or call  
**(808) 587-7200**

Follow Sen. Kim on Facebook  
[facebook.com/SenatorDonnaMercadoKim](https://facebook.com/SenatorDonnaMercadoKim)



## FOOD DRIVE DAY 2023

26 August 2023 | 8-2PM

**Donate**  
Donate online or drop off donation at a collection site

**Volunteer**  
Assistance with sign waving, food sorting and other activities needed on 8/26



**Details:** [hawaiifoodbank.org/food-drive-day](https://hawaiifoodbank.org/food-drive-day)



August 2023

## Mortgage & Utility Relief for Honolulu Residents Additional Homeowner Assistance

Council for Native Hawaiian Advancement is providing one-time assistance for mortgage and other qualified housing expenses, as well as housing and legal counseling, for homeowners on Oahu impacted by the COVID-19 pandemic.

To see if you qualify, go to: [www.hawaiiancouncil.org/oahuhome](http://www.hawaiiancouncil.org/oahuhome)  
Or call  
Council for Native Hawaiian Advancement | (808) 596-8155



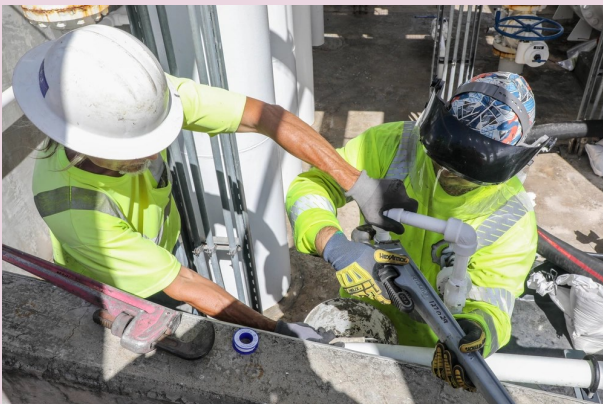
### Eligibility Requirements

#### Who Can Qualify

1. Must be an O'ahu Resident
2. Must be 18 or older
3. Must be a homeowner
4. AMI at or below 150% per HUD guidelines, with priority given to 100% AMI or below
5. Must provide proof of financial hardship associated with the COVID-19 pandemic after Jan 21, 2020 (either a 10% decrease in income or 10% increase in expenses)
6. The household does not have an interest (full or partial interest) in other real property besides the primary residence.
7. The household does not have more than 5-months of housing expenses in liquid assets.
8. Eligible Properties are owner occupied, one-unit single family homes (including 'ohana or accessory dwelling units) or condominium units located on O'ahu.

**COUNCIL** for  
**NATIVE HAWAIIAN**  
**ADVANCEMENT**

## Red Hill Fuel Storage Facility Updates



### **\*NEW\* EPA Red Hill Groundwater Results Mapping App Now Available**

The EPA released a mapping tool that provides a simple and interactive way to view up to date information about groundwater quality around the Red Hill Bulk Fuel Storage Facility. View the new Groundwater Results Application at [www.epa.gov/red-hill/groundwater-results-application](http://www.epa.gov/red-hill/groundwater-results-application)

### **\*NEW\* Red Hill Community Involvement Plan**

The Community Representation Initiative is an effort that the Navy and DLA, with support from EPA, is establishing. Input from participants of the Red Hill Community Representation Initiative meeting was applied to create the Community Involvement Plan. See the plan at [www.epa.gov](http://www.epa.gov)