

# SENATOR DONNA MERCADO KIM

PROUDLY SERVING  
DISTRICT 14

KAPALAMA · 'ĀLEWA · KALIHI · KALIHI VALLEY · FT. SHAFTER · MOANALUA GARDENS & VALLEY · RED HILL

## RED-LIGHT SAFETY CAMERA AT LIKELIKE HWY AND SCHOOL ST COMMENCED ISSUING CITATIONS AS OF APRIL 10, 2023

- ◆ The penalty for running a red-light in the City and County of Honolulu is typically \$97, but can be up to \$200
- ◆ Vehicles must come to a complete stop to avoid activating the camera
- ◆ Vehicles entering the intersection when the light is yellow will not receive a red-light citation; however, if caught in the intersection during a red light (due to traffic backup), they could receive a blocking the intersection citation.
- ◆ Red-light running or disregard of traffic signals has resulted in 1,879 crashes statewide
- ◆ A complete list of locations and more information can be found at <https://hidot.hawaii.gov/highways/red-light-safety-program/>



*Love what you do. Join Our Team!*  
KALIHI-PALAMA HEALTH CENTER

## JOB FAIR

**DATE**  
Sat, April 22, 2023

**TIME**  
9:00 AM - 1:00 PM

**LOCATION**  
710 North King Street  
Honolulu, Hawaii 96817

**PARKING**  
PARKING AVAILABLE AT ST.  
ELIZABETH CHURCH

**SCAN ME!**



- On-Site Interviews
- On-Site Applications Available
- Meet Hiring Supervisors

*We're Hiring!*

- Registered Nurses
- Certified Medical Assistants
- Nurse Practitioners
- Family Physicians
- Patient Services Specialists
- AND MORE!

For More Information: Call (808) 843-7263 or Email [humanresources@kphc.org](mailto:humanresources@kphc.org)

## Sierra Club Promotes Walk for Water to Shut Down Red Hill

On Sunday March 19th, residents of Red Hill, Moanalua Valley, and members of the Sierra Club gathered to recognize individual and community efforts in the defueling and shutting down of the Red Hill military installation.

Community members were also there to promote the Walk for Water to Shut Down Red Hill. Join fellow water drinkers on Sunday, April 23, 2023, at Ala Moana Regional Park and Magic Island at 8AM. Registration fees collected from the event will go to the Sierra Club of Hawai'i to support the walk as well as their ongoing efforts to protect our sole-source aquifer.

For additional information or to register please visit: <https://www.redhillwalkforwater.com/>

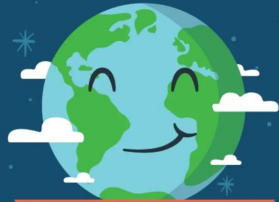


Hawaii State Capitol, Room 218  
415 S. Beretania St. Honolulu, HI 96813

Phone: (808) 587-7200  
Fax: (808) 587-7205

Email: [senkim@capitol.hawaii.gov](mailto:senkim@capitol.hawaii.gov)  
Website: [www.capitol.hawaii.gov](http://www.capitol.hawaii.gov)

April 2023



HAPPY EARTH MONTH

# April is Earth Month

## Rid-A-Fridge Program

### \$75 CASH BACK



Hawaii Energy's Rid-a-Fridge program makes it easy for residential electric customers to recycle old refrigerators and freezers free of charge and get paid in the process!

Residents on the islands of Hawaii, Maui & Oahu will receive \$75 for each refrigerator or freezer recycled.

**Before you apply, make sure to have your Contract ID# ready.**

To locate your Contract ID # on your electric bill, look in the top right corner of your bill under the service address. It starts with the number 3 and is eight digits long as in the example below.

MARY SMITH	Account Number: 202012345678	Service Address Page 1 of 2 999 MAIN STREET
	Invoice Number: 649123456	Contract: 3XXXXXXXX
<b>ACCOUNT SUMMARY</b> (See Bill Detail section for more information)		<b>MESSAGES</b>
Service Period	04/28/16 - 05/26/16	May Day is Lei Day in Hawaii - Plant native trees and shrubs along the warmer east, west and south sides of your home to shade walls and help lower your
Previous Balance	\$3,802.79	
Payments	\$3,802.79-	
<b>OUTSTANDING BALANCE</b>	<b>\$0.00</b>	

- Retrieve the following information:
  - Contract ID# from your electric bill
  - Make, model, serial number, approximate age and size of your old working 14 cubic feet or larger fridge or freezer
- Call to schedule for a free pick-up. 537-5577 or toll-free 1-877-231-8222.
- The hauler will pick up your old fridge or freezer\* (a receipt can be left upon request.) They will then submit the application on your behalf. Your rebate will be mailed to you within 6-8 weeks.

## BE A LIGHT, GIVE A LIGHT

### Nominate a Nonprofit for an Energy-Saving Makeover!

This Earth Month, we're proud to announce our "Be a Light, Give a Light" campaign! We're inviting our community to nominate a local nonprofit for an energy-saving makeover. Hawai'i Energy will award three winning organizations with new LED lighting valued at up to \$25,000.

As we march toward 2045, Hawaii Energy continues to be driven by our commitment to helping everyone get involved in the clean energy movement. Many nonprofits face extra challenges with making facility improvements, and this is one way you can ensure they benefit from the movement, save on operating costs, and are able to direct more funds at their mission-critical work.

**Nominate a nonprofit today**

**[HawaiiEnergy.com/Be-A-Light](http://HawaiiEnergy.com/Be-A-Light)**

**Nomination period will close on April 28, 2023.**

## Feral Chickens

Due to the many concerns and feed back I have received from constituents regarding feral chickens terrorizing residents, I introduced two bills this session that would have combated these nuisances. Sadly, both bills never made it out of committee so, I then drafted a resolution, Senate Concurrent Resolution (SCR) 92

I am pleased that SCR 92, urging respective departments to establish and implement a 5 year pilot program designed to mitigate and control the significant increase in the population of feral chickens, roosters and pigs is on its way to the House after the Senate Agriculture and Environment (AEN) Committee voted to adopt it on April 5, 2023.

Although SCR 92 has not been scheduled for a hearing in the House yet, I urge anyone and everyone who is affected by feral chickens to submit testimony once the date is set. To track SCR 92 or to schedule to submit testimony orally or in person please visit:

<https://lrb.hawaii.gov/par/engagement-101/>



## First Wave of Pre-K Classes Planned to Open



Of the eleven free preschools classrooms scheduled to open in August, two of them are in Kalihi, Fern Elementary and Kawae Elementary. Lt. Gov. Sylvia Luke has made it one of her administration's goal to help low-income families across the islands receive early education, with eight classes on Oahu and, one on Kauai and two each on Maui and Hawaii Island. The plan is to renovate existing unused classrooms in areas with the greatest need. Each classroom is estimated to cost about \$500,000 in renovations and funds will come from the \$5.5 million Gov. Ige released before leaving office and out of the \$200 million that the Legislature approved in 2022 to expand pre-K access. It is estimated that over 9,000 of Hawaii's 3 to 4-year-olds are underserved and the hope is to eventually open pre-k classes on every University of Hawaii campus.

**SERVICE  
OPPORTUNITY TO  
HELP YOUTHS**



Palama Settlement is looking for adult and high school students to develop a mentoring program for underprivileged youth in our community. There is a variety of programs at the community center located at 810 N. Vineyard Blvd. Visit their website [www.palamasettlement.org](http://www.palamasettlement.org) for more information and to complete a volunteer application.

**HAWAII  
DEPARTMENT OF  
TRANSPORTATION  
DEDICATES APRIL  
TO DISTRACTED  
DRIVING AWARE-  
NESS MONTH**

This is part of a national campaign urging motorists to focus solely on driving and to avoid all distractions.

