

SENATOR

Troy N. Hashimoto

News & Updates

SPRING 2026
WAILUKU EDITION



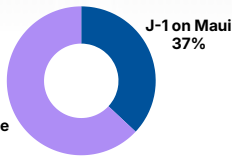
PROUDLY SERVING SENATE DISTRICT 5 - WAILUKU, KAHULUI, WAIHE'E, WAIKAPU MAUKA, WAI'EHU

Update from the Legislature: Expanding Pathways to Keep Educators in the Classroom

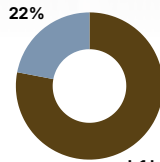
Currently, the State Department of Education relies on roughly 1,000 emergency hires to fill persistent classroom vacancies. These critical positions are primarily filled by a combination of dedicated local emergency hires and international exchange teachers holding J-1 visas. This issue is especially pressing locally, as the Maui-Baldwin-Kekaulike-Kūlanihāko'i complex area has the highest number of emergency hires in the state. To keep these educators in the classroom, the State must widen the runway and provide realistic timelines for them to achieve full licensure. This is particularly vital for the community, as Maui hosts 37 percent of all J-1 teachers statewide. Often, these visiting educators run out of allowable teaching time before completing their certifications.

133 out of 365 J-1 teachers statewide are on Maui

J-1 Statewide 63%



J-1 on Maui 37%



J-1 leaving 78%

104 out of 133 J-1 Maui teachers will leave by June 2027 if alternative pathways are not identified

Because the Teachers Standards Board has not established an independent administrative pathway, the Legislature is stepping in to provide clear statutory direction. **Senate Bill 2875 SD1 and House Bill 1840** address this by aligning state permits with their five-year federal visas. Because these visiting educators are already licensed professionals here on a short-term cultural exchange, an alternate license is appropriate, and principals always retain the final authority on employment. This same logic must apply to local emergency hires.

As highlighted in recent reporting, many of these unlicensed educators want to work in local schools for longer, but they need adequate time to balance managing a full-time classroom with completing their credential requirements. Although specific measures to extend their employment limits did not advance this legislative session, the Legislature will continue to push for solutions that retain local talent. Furthermore, there must be expanded support for individuals who wish to enter the teaching profession. There remains a strong commitment to policies that build a robust educator pipeline, stabilize the workforce, and keep dedicated teachers in the classroom without lowering rigorous standards.

FUNDING RELEASES FROM THE GOVERNOR

Generally paid for with borrowed bond funds, projects must be large-scale renovations, repair, or new construction.

Grant-in-Aids

Arc of Maui County - \$200,000

Electrical system modernization of four group homes serving special needs adults.

Maui Arts & Cultural Center - \$600,000

Construction of community stage support spaces and dressing rooms.

Hawaiian Islands Land Trust - \$100,000

To restore a historic structure for use as a cultural education center at their Waihee property.

Mental Health Kokua - \$500,000

For property acquisition to be used as transitional housing for homeless adults.

CIP

New Central Maui Elementary and Middle School (NCMS) - \$1,210,573

For land acquisition of additional land. In total, over \$74 million has been appropriated for this project.

Previous appropriations toward NCMS:

- \$500,000 for ground improvements
- \$20 million for all campus and community-related improvements
- \$19 million for construction, equipment and appurtenances
- \$35 million for acquisition and design

MESSAGE FROM TROY:

As we head toward the final weeks of the legislative session in early May, the Maui delegation is working hard to secure funding and support initiatives that strengthen our community. In this newsletter, I want to share a few legislative updates.

I am pleased to share that the State of Hawai'i was recently awarded nearly \$189 million to expand rural healthcare across our islands. This significant investment will strengthen access, support workforce development, and create opportunities for the next generation of healthcare professionals to build their futures here at home.

My father recently reminded me that our island has weathered significant storms before, and our resilience is being tested again following the recent Kona Low. If your home or business sustained damage, I strongly encourage you to submit a damage report directly to the Maui Emergency Management Agency at crisistrack.juvar.com/public/mauiHI/request.html. While a report does not guarantee direct individual assistance, this data is critical for helping the county document the full scope of the impacts and secure vital state and federal recovery funding for our community.

NEXT STEPS

While Hawai'i faces many challenges, I remain committed to finding thoughtful and creative solutions that support our community.

As always, I am here to assist you. If you have any questions, please contact me at (808) 586-7344 or senhashimoto@capitol.hawaii.gov. Take care!

Mahalo,

Troy Hashimoto
State Senator, District 5



COUNTY OF MAUI



Wailuku Road Repaving Schedule

The following streets are anticipated to undergo repaving, courtesy of Maui County.

FY26:	FY29:
Maka'ala Drive (Waiehu Beach Road-Kilina'i)	Muliwai Drive
Hoa'una Street (Kahekili-Owaka)	Neki Place

This schedule is tentative and is subject to change at any time. Any questions can be directed to the County Engineering Division at (808) 270-7845.

One year later: An Update on Act 278

Last year, the Legislature passed what became Act 278, which provides an avenue for landlords and tenants to engage in conversations early so that they can reach an agreement and avoid a lengthy eviction process. The Hawaii State Judiciary contracted with Mediation Centers of Hawaii, a community-based organization, to create **Hawaii's Pre-filing Eviction Mediation Program (PEMP)**.

1. Landlords must provide a **10-day eviction Notice** to tenants for nonpayment of rent and provide the Notice to the community mediation center on the island where the rental property is located.
2. The Tenant must request mediation from the community mediation center on their island where the rental property is located **within ten days** from the receipt of the Notice.
3. Mediation must be scheduled within ten days and take place **within thirty days** from the date the mediation center makes contact with the tenant and the landlord.
4. Landlords may file for eviction after **twenty calendar days** from when the tenant receives the Notice.
5. Mediation is **FREE**. Landlords and tenants are responsible for their own attorney's fees and other costs they incur in the mediation process.

How to schedule a mediation:

Call the mediation center where your rental property is located:

Mediation Services of Maui
(808) 344-4255 | (808) 446-0511
landlordtenanthelp@mauimediation.org



*Scan for additional information

Hawaii Awarded \$188.9 Million to Transform Rural Healthcare

Hawai'i is poised to receive **nearly \$189 million** in federal funding through the Rural Health Transformation Grant passed by the U.S. Congress to expand health care access in rural and Neighbor Island communities. The award covers federal fiscal years 2026 through 2030.

Next steps

The State will finalize an updated budget after negotiations with Centers for Medicare and Medicaid Services and begin releasing funds to partner agencies. An oversight team will coordinate across state departments, providers, and community organizations to ensure the plan is implemented on time, within budget, and improves healthcare statewide.

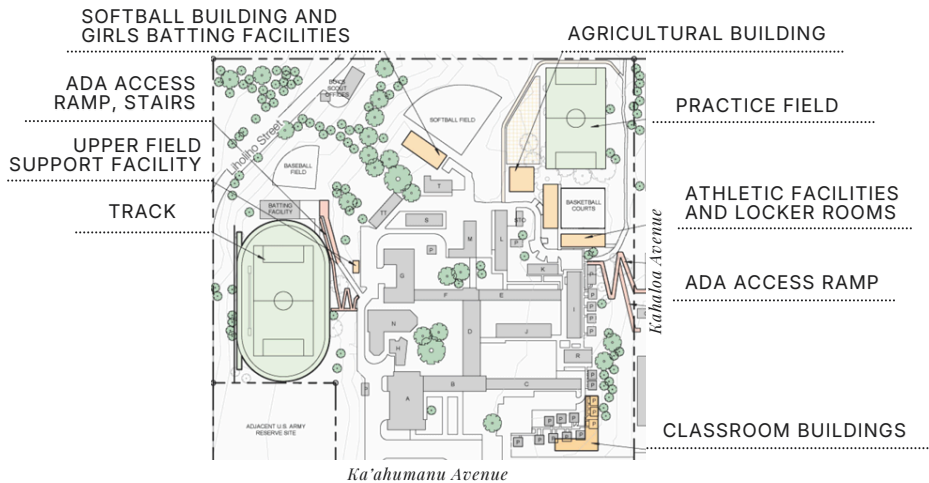
The grant prompted Senator Hashimoto to introduce **SCR27/SR24**, urging Maui Health to work with stakeholders to establish a full-time medical residency program for doctors on Maui, the last major island without a program.

Baldwin High Master Plan Clears State Environmental Review

The Department of Education has finalized an environmental impact assessment for master plan improvements at **Baldwin High School**. Planned improvements include constructing a new two-story, 14-classroom building that will end students' reliance on neighbor county athletic facilities. Under the new master plan, the majority of the upcoming athletic additions will be built within the school's boundaries. Funded by state moneys, the work will be extensive with land grading and utility installation.

The Legislature previously appropriated **\$5.83 million** for design and construction of PE and athletic facilities, including **\$600,000** for design work on related facilities, and **\$14.3 million** for construction, all of which have been released by the Governor. \$12.5 million was appropriated for an all-weather track and field, with **\$10 million** already released by the Governor. For questions, contact Project Consultant Patrick McCormick at (808) 244-2015.

Proposed Conceptual Site Plan



To view the EIA, visit https://files.hawaii.gov/dbedt/erp/Doc_Library/2025-07-23-MA-DEA-Baldwin-High-School-Sports-Facilities-and-MP-Improvements.pdf

Waikapū Sewer and Water Upgrades Move Forward

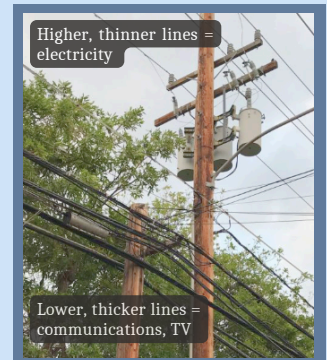
The Waiko Road sewer system and waterline improvements will proceed after being issued a final environmental assessment and finding of no significant impact for a \$6 million project to install and replace aging waterlines. This project will end affected residents' reliance on individual wastewater systems and improve fire protection.

Construction will take place within County-owned roads, including **West Waikō Road, Wilikona Place, Kemoa Place, Keilio Place, Honua Place, Nuna Place, Kilohi Street and Old Waikapū Road**. The sewer system will eventually connect to the existing Waikapū Homesites Subdivision, allowing those residents to link to the County wastewater system. The project has an anticipated development timeframe of around 1 year. For more information, contact the Maui County Department of Environmental Management at (808) 270-8230.

Removing "Double Poles" Across Hawaii

Hawaiian Electric plans to remove more than 9,400 double poles across Oahu, Maui County, and Hawai'i Island by 2028, with over 5,000 already removed. **Double poles** occur when a new utility pole is installed but equipment—such as telecom or cable lines—have not yet been transferred from the old pole, leaving both poles standing temporarily. Once all companies move their equipment, the old pole can be removed.

Removing double poles improves safety, reliability, and neighborhood appearance. To report a downed power line or a power outage in Maui County, call **1-855-304-8181** (24/7) or report it online at <https://www.hawaiianelectric.com/safety-and-outages/power-outages/report-maui-county-outage>.



Double pole and utility lines

JCCM ANNUAL SHINNENKAI

Senator Troy Hashimoto joined the Japanese Cultural Society of Maui for its annual Shinnenkai celebration to welcome the New Year and recognize individuals who have made significant contributions to preserving Japanese culture and history in the community. This year's Nihon Bunka Award



MELANIE AGRABANTE



KAREN M. WASANO

recipients, **Melanie Agrabante** and **Karen M. Wasano** (Fujima Saemitsu), were honored for their outstanding dedication and service. Agrabante was recognized for her tireless work as Archive

Director at the Nisei Veterans Memorial Center, helping preserve the legacy of Hawai'i's Nisei veterans. Wasano was also celebrated for more than four decades of teaching Nihon Buyo, or traditional Japanese dance, on Maui.



Central Maui Community Plan Help Shape Central Maui's Future!

The **Central Maui Community Plan** is a community-specific land use plan that provides guidance on future development and preservation of Central Maui over a 20-year period. This plan, which helps guide the types of development envisioned within each area, hasn't been updated since 2002 - despite a County requirement to be updated every 10 years. Now, the long-overdue update is underway, and **your input is vital**.

This plan will guide future zoning, transportation, parks, greenways, and infrastructure in Central Maui. It's your chance to influence how your community grows: **where you live, work, shop, and play**.

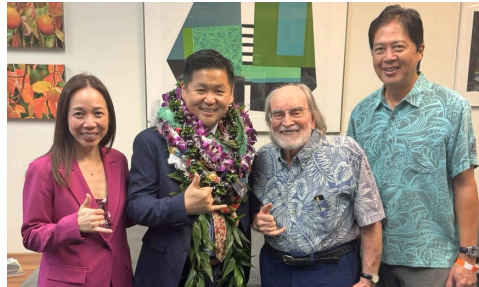
Contact the Planning Department at (808) 270-7214 or wearecentralmaui@mauicounty.gov to get involved and access the latest information, or visit the homepage at: centralmaui.wearemaui.org.

OPENING DAY AT THE LEGISLATURE



The 2026 Legislative Session convened on Wednesday, January 21, marking the start of the second half of the legislative biennium. Opening Day at the State Capitol is always energizing, bringing together legislators, community leaders, and residents from across Hawai'i. During the opening ceremonies, the Senate Majority outlined its key priorities for the year ahead.

Housing and affordability remain top priorities, with a focus on expanding the supply of housing through more efficient development processes. One proposal is **SB2544 SD2**, which proposes a 5-year Hawai'i Builds Pilot Program within the Hawaii Housing Finance and Development Corporation to support housing development using Dwelling Unit Revolving Fund financing and expedited interagency review to speed up project delivery. The goal is to cut the development time by half.



With UH Board of Regents members Lauren Akitake, former Governor Neil Abercrombie, and Gabriel Lee



With Maui Economic Opportunity Executive Director Debbie Cabebe, Maggie Batangan, and members

The Senate will also prioritize workforce development and economic diversification, including initiatives such as Enterprise Zone expansion, advanced manufacturing, and technology-driven industries as seen in **SB2816 SD1** and **SB2360 SD1**. These efforts aim to support local entrepreneurship, expand opportunities, and create quality jobs across the state.

Strengthening the connection between education and real-world career pathways is also a key focus. **HB2171 HD1** reaffirms the University of Hawai'i's authority to engage in enterprise-related activities for educational purposes, including programs like the UH Maui College Hotel Lab, which provides students with hands-on hospitality training and practical workforce experience.



With Councilmember Yuki Lei Sugimura and Michele Yoshimura on Opening Day

SECONDARY STUDENT CONFERENCE

In early February, student leaders from Maui High School and H.P. Baldwin High School recently visited the Hawai'i State Capitol as part of the three-day Secondary Student Conference.



During a talk-story session with Senator Hashimoto



Baldwin High School student leaders

During the conference, students engaged directly with the legislative process by meeting with legislators and participating in sessions on researching bills, writing testimony, and debating current issues facing the state. The experience provided students with valuable insight into public policy and civic engagement.





SENATOR

Troy N. Hashimoto

Hawai'i State Capitol
415 S. Beretania Street, Room 222
Honolulu, Hawai'i 96813
Contact: (808) 586-7344
SenHashimoto@capitol.hawaii.gov
Follow: linktr.ee/sentroyhashimoto

PRSR STD
ECRWSS
U.S.POSTAGE
PAID
EDDM Retail

LOCAL
POSTAL CUSTOMER

Apply Now!

Applications Open for Free Public Pre-K



The Executive Office on Early Learning's (EOEL) Public Pre-K Program serves eligible 3- and 4-year-old keiki in the two years before kindergarten and operates classrooms statewide in both English and 'Ōlelo Hawai'i language settings and helps prepare children for success.

Visit the EOEL website at EarlyLearning.Hawaii.gov for more information and to apply!

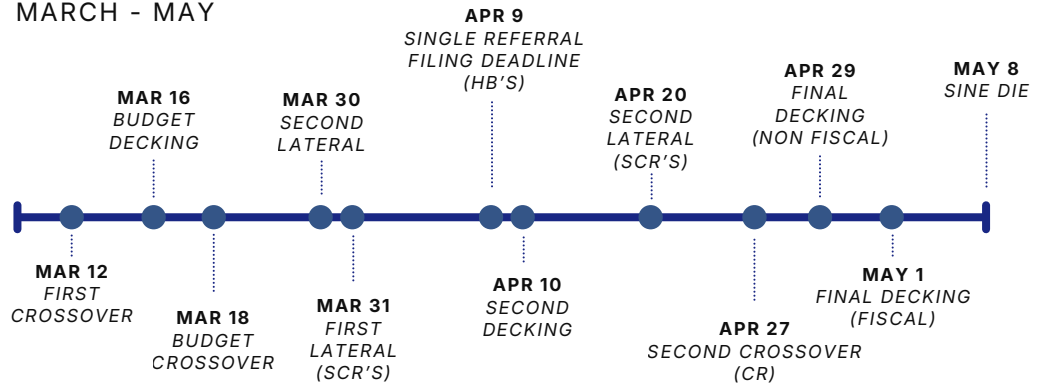
H.P. BALDWIN HIGH SCHOOL BLOCK PARTY

In February, Senator Hashimoto attended the H.P. Baldwin High School Block Party, which supports Baldwin's student programs, including the athletics, visual arts, and culinary departments.

IMPORTANT DATES

15 APRIL	TAX DAY
10 MAY	MOTHER'S DAY
17 MAY	MAUI HIGH SCHOOL GRADUATION WAR MEMORIAL STADIUM
18 MAY	H.P. BALDWIN HIGH SCHOOL GRADUATION WAR MEMORIAL STADIUM
23 MAY	KAMEHAMEHA SCHOOLS MAUI GRADUATION KOA'I'A GYMNASIUM
24 MAY	LAHAINALUNA HIGH SCHOOL GRADUATION SUE D. COOLEY STADIUM
25 MAY	MEMORIAL DAY
28 MAY	LAST DAY OF CLASSES FOR DOE STUDENTS
29 MAY	ST. ANTHONY HIGH SCHOOL GRADUATION ON CAMPUS
30 MAY	SEABURY HALL GRADUATION ON CAMPUS

LEGISLATIVE TIMELINE: MARCH - MAY



UPCOMING DEADLINES

APRIL:

- 9th** – Resolutions must receive their required reading to move to the other chamber.
- 10th** – Bills approved by the second chamber must be formally filed with the clerk to continue moving forward.
- 16th** – Budget bills that were amended in the second chamber must pass a final vote there to return to the original chamber.
- 27th** – Amended concurrent resolutions must pass the second chamber to return to the originating chamber.
- 29th** – Bills that do not involve state spending (non-fiscal) must receive final approval from both chambers.

MAY:

- 1st** – Bills involving funding, taxes, or financial impacts must receive final approval from both chambers.
- 8th** – "Sine die" means the Legislature adjourns without setting another meeting date, marking the official end of the legislative session.

MAKE SURE YOUR VOICE IS HEARD.

Register or update your voter information at: elections.hawaii.gov

E-Updates: Subscribe to our bi-weekly newsletter for community and legislative updates at linktr.ee/sentroyhashimoto or email SenHashimoto@capitol.hawaii.gov

