

SENATOR DONNA MERCADO KIM

PROUDLY SERVING
DISTRICT 14



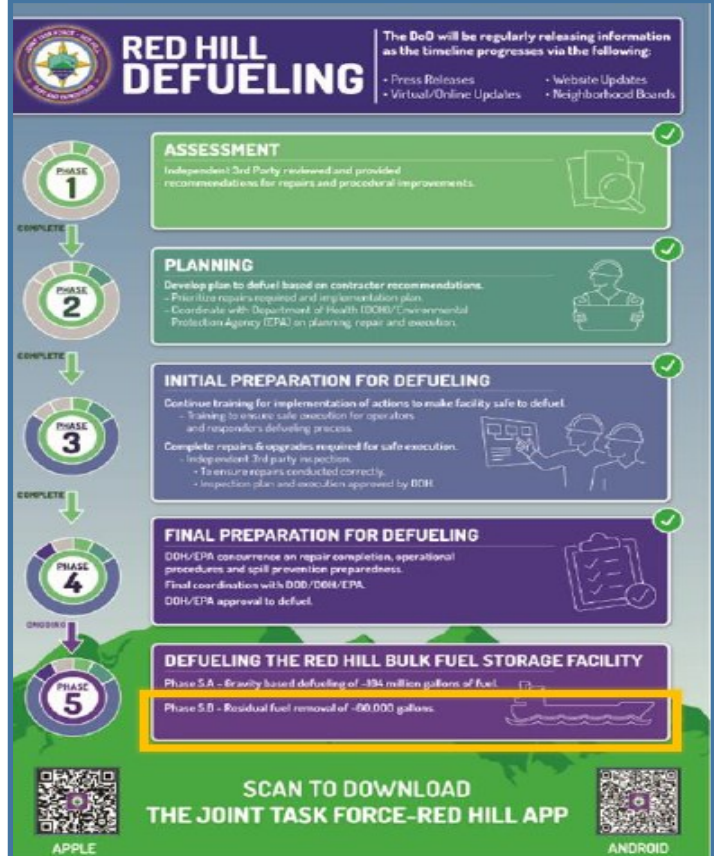
LILIHA PUUNUI ĀLEWA NEIGHBORHOOD BOARD COMMUNITY REPORT

JTF-Red Hill Defueling

Sen. Kim joined members of the Senate Committees on Agriculture and Environmental (AEN) and Health and Human Services (HHS) at a joint legislative info briefing on Nov. 2, 2023.



Navy officials not only updated legislators on the Joint Task Force (JTF) Red Hill Defueling that is currently in progress, but they also emphasized its commitment to rebuilding trust with the community. As of Nov. 10, the Navy reported removing approximately 89,223,876 gallons. The defueling is being conducted Monday through Friday. For more information, visit <https://www.pacom.mil/JTF-Red-Hill/Joint-Task-Force-Red-Hill/>



Fuel Tank Advisory Committee Meeting

The next Fuel Tank Advisory Committee (FTAC) hybrid meeting is scheduled for Wed., Nov. 15, 2023 from 1pm -5pm. The presentations will include Navy updates on defueling, closure and remediation, followed by a public Q & A session.

The public is invited to attend either at the Blaisdell Center, Pikake Room or via Zoom. To receive a Zoom link, register in advance at https://hawaii.zoom.us/webinar/register/WN_LnUsPj4BRRqxPKdFyQXCeg.



Hawaii State Capitol, Room 218

Phone: (808) 587-7200

Email: senkim@capitol.hawaii.gov

KAPALAMA · ĀLEWA · KALIHI · KALIHI VALLEY · FT. SHAFTER · MOANALUA GARDENS & VALLEY · RED HILL

November 2023

Special Session at the Legislature

The Senate will convene in a special session on Nov. 20 and 21 to take up the Governor's appointments of both Lisa M. Ginoza and Vladimir Devens as justices for the Hawaii State Supreme Court. Ginoza is currently the chief of the Intermediary Court of Appeals, and Devens is a private practice attorney in Honolulu. The appointments are subject to Senate confirmation.

Likelike Highway Town Bound Land Traffic Notice

The Hawai'i Department of Transportation (HDOT) will open a single lane of Honolulu-bound (town-bound) Likelike Highway between the H-3 Freeway split and the Wilson Tunnel daily from 4:30 a.m. to 9:30 a.m. Monday, Nov. 13 through Friday, Nov. 17, 2023.

Currently both town-bound lanes of Likelike Highway are closed as crews work to replace 25 fractured ceiling rods discovered in a routine inspection. The replacement of the 25 rods is projected to be complete and both lanes reopened by 4:30 a.m. Monday, Nov. 20.

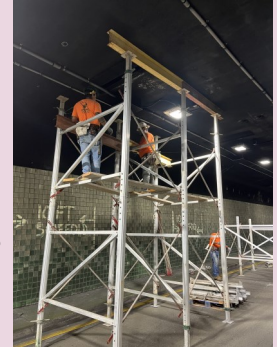


Photo courtesy HDOT

Department of Transportation Update

No Right Turn on Red

After HDOT Public Affairs representative Shelly Kunishige fielded questions at last month's Kalihi Valley Neighborhood Board meeting about the No Right Turn on Red (NRTR) at School Street onto Likelike Highway, she contacted Sen. Kim's office which has reached out to both the Alewa NB and Kalihi Valley NB to coordinate a date/time after Nov. 17 to meet with the DOT crew for a site visit at the NRTR intersection.

Red Light Camera Pilot Project

Sen. Kim's office has followed up with DOT's Public Affairs Office to request a presentation at the next NB meeting where an update on the Red Light Camera intersections. A year ago last Fall, the Red Light Camera pilot project was implemented at Vineyard/Palama Street as well as Vineyard /Liliha Street. The Pali Highway and School Street Red Light Camera project was implemented this year in January, and in April for the Likelike Highway and School Street intersection. Visit <https://hidot.hawaii.gov/highways/red-light-safety-program/>

Beware of Fake Electronic Benefit Transfer (EBT) Transactions

The Dept of Human Services has received reports recently about fraudulent EBT transactions and has provided the following tips if you suspect a fraudulent transaction has occurred with your EBT card:

- DHS encourages all Financial or SNAP clients to be proactive and check their EBT account for unusual transactions
- Please visit the DHS Processing Center (PC) nearest to you to report any fraudulent transaction and to request a replacement card

Visit www.humanservices.hawaii.gov.

Free Pop-Up Legal Advice Clinic

Volunteer attorneys will be available to meet if you have a legal issue and need advice on Sat. Nov. 18, 2023 from 1pm - 4pm at Lanakila Multi-Purpose Senior Center. Walk-ins are welcomed. Call (808)528-7046 or visit vlsh.org.



MEDICARE OPEN ENROLLMENT



October 15, 2023 to December 7, 2023

Eligibility:

- Age 65 or older
- Under 65 with disabilities (SSDI)
- A U.S. citizen (5 continuous years)
- Any age with End-Stage Renal Disease
- Any age with Amyotrophic Lateral Sclerosis (Lou Gehrig's Disease)

During this open enrollment period, individuals can compare 2024 coverage options on www.medicare.gov or call the State Health Insurance Assistance Program (SHIP) at (808) 586-7299.

Community Service

Kalihi Waena Elementary School Needs Volunteers for their Beautification Painting Project

*Saturday
Nov. 18
8:30am - 12pm*

Whether you're an experienced painter or a beginner, everyone is welcome to participate. Bring your family and friends along and enjoy a day of community bonding. Let's create a vibrant and inspiring environment for the students of Kalihi Waena Elementary School.

Let's Connect!

Sign up to receive periodic district information and updates

Send your name and email address to senkim@capitol.hawaii.gov

or call
(808) 587-7200

Follow Sen. Kim on Facebook
facebook.com/SenatorDonnaMercadoKim

Holiday Season

The Honolulu Police is urging everyone to drive safely especially now that Thanksgiving, Christmas, and New Year festivities are upon us.

Extra Sobriety Check Points

HPD is urging responsible driving this holiday season and will be setting up randomized impaired driver checkpoints from **Nov. 1 to Dec. 31**



The checkpoints will be set up at unannounced times and locations around Oahu

Kamehameha Lions Club
presents the...
Liliha Palama

CHRISTMAS Parade

NOVEMBER 24th @5:30pm
Sponsored by the Liliha Palama Business Association

ROUTE
Liliha Street from Judd - North King

SANTA Returns in 2023 with all his Elves!

facebook.com/kamehamehalionsclub
KLCFOUNDATION.ORG