

MILILANI/WAIPAHU COMMUNITY REPORT

D) SENATE DISTRICT 18 – MAY/JUNE 2020

Serving Mililani Town, Waipio Gentry, Waikele, Village Park & Royal Kunia



Aloha Friends and Neighbors,

I want to start by saying a BIG mahalo to all of you who did your part to flatten the curve. We have at this point, very low community transmission because of your efforts and commitment. I know that many of you, including myself, are eager to see life return to a “new normal” after the past few months, and I will continue to work to ensure that our economy is reopened in a safe and responsible manner.

I consider my role as the Chair of the Senate Education Committee my most important duty as a Senator. But my role as one of six members of the Senate Special Committee on COVID-19 has also become an important responsibility this year. Our Committee has met three to four times weekly since March 23rd with State and City agencies to gather important information and make critical decisions in order to fill the leadership gaps that arose in the handling of our State’s pandemic response.

From our offer in March to send 40 of our own Legislative staff to assist DLIR with Unemployment Insurance phone banking to the push for a 14-day mandatory quarantine on incoming travelers to requiring wearing masks, this Committee has been demonstrating leadership in maintaining accountability from State agencies. We were very fortunate that my fellow Mililani Senator, Donovan Dela Cruz, was elected to chair this Committee. He has worked tirelessly to keep Hawai’i safe.

As we reconvene on June 22nd, we remain steadfast and dedicated to serving our communities and finding swift resolutions to ease the burdens COVID-19 has placed on local families, businesses and our economy. We look forward to leading with aloha and making strides forward as we navigate the coming weeks and months together. Please stay vigilant as we work to re-open our state.



SENATE
VICE PRESIDENT

Chair:
Committee on
Education

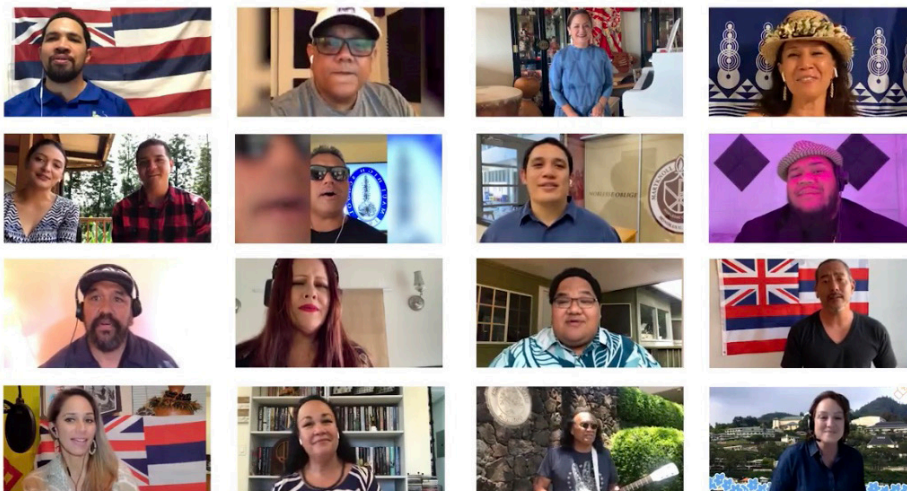
Vice Chair:
Committee on
Higher Education

Member:
Committee on
Ways and Means

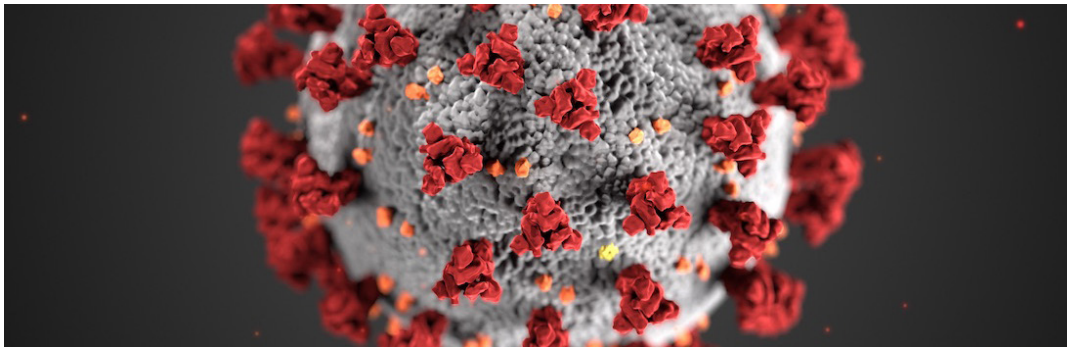
Hawaii State Capitol
Room 228
(808) 586-7100

senkidani@capitol.hawaii.gov

Mahalo nui to KSG Films, Upena Production Network and to the many talented local artists who came together in honor of the Class of 2020 to create this beautiful, heartfelt tribute video to our graduates. 22 artists statewide shared a moving rendition of “Good Times Together” and “Friends” to commemorate our seniors. Click the photo to watch the performance!



SR198: SENATE SPECIAL INVESTIGATING COMMITTEE ON COVID-19



During the recess that the Legislature took in order to adhere to the Governor's Stay-at-Home order, the Senate formed a Special Committee on COVID-19. The purpose of this committee was to ensure access to information for the public as well as ensure that the Governor's administration moved expeditiously to protect the health and safety of our State.

As a member of this special committee I am proud of the work that we have done. We have pushed for worker redeployment to assist our residents with the unacceptable backlog of UI claims. We proactively pushed for a 14-day mandatory quarantine for all incoming and inter-island travel. However, this committee frequently ran into issues with getting information requests from the Governor's Departments. After repeatedly asking the Governor's office for budgetary information, health guidelines, and plans for reallocating idled workers, this committee received at best mixed responses. The Senate believes it important to ensure that the public receives this information in a timely and reasonable matter.

JUNE RECONVENE

The Legislature did not adjourn but went into recess. Given the fluid and ever-changing landscape of the COVID-19 Pandemic, the Legislature felt it was prudent to make emergency appropriations to the Counties and critical services but also wait for updates from our Council on Revenues. These projections help us to foresee budgetary gaps that may arise and address public health and safety needs. The Legislature will address these matters when it reconvenes June 22nd. Currently, it appears we are \$300M short for FY 2020-2021 and expect that FY 2021-2022 will also have budget shortfalls.



UNEMPLOYMENT RESOURCES:

1. [State of Hawaii Unemployment Insurance](#)

The official state unemployment website to file your claim or check on the status of your claim. Open to file Monday through Friday: 6:30am-11:00pm HST
Weekends & Holidays: 9:00am- 11:00pm HST

2. [Hui Claims Status](#)

To check on the status of your unemployment benefits claim status, please click the link to Hui Claims.

3. [Pandemic Unemployment Assistance \(PUA\)](#)

Federal unemployment support under the CARES Act for otherwise ineligible workers, including self-employed and those whose claims may have already been denied due to such limitations.

3. [Federal Pandemic Unemployment Compensation \(FPUC\)](#)

FPUC provides a temporary emergency increase in unemployment compensation benefits to eligible individuals for \$600 per week in addition to weekly benefits they receive from other unemployment programs. This will be paid automatically with your unemployment claims.

CAPITAL IMPROVEMENT PROJECTS

While the State budget situation will not leave us with the fiscal freedom to fund some of the new budget items and programs initially planned, there are still bright spots to be found. The millions of dollars in Capital Improvement Projects (CIP) that myself and the other Mililani Legislators secured over the past two years have been released, including:

Mililani Tech Park:

\$2.77M for the additional acquisition of adjacent parcel lots for a robust Community Arts and Theatre Center.

I have long advocated that Mililani is in need of a community arts and theatre center. Mililani has a wealth of community resources including recreation centers and open spaces but has always lacked a formal space for community productions and support of our local arts scene. We can acquire the land and move forward with design and construction. This facility would be shared with Leilehua Schools also as well as the First Responder Tech Park agencies.

Mililani Waena Elementary School:

\$200K to plan a campus-wide redesign and 21st century learning spaces.

During my summer conversations with each school, one of the issues we discussed was how Mililani Waena has reached capacity for building space. To accommodate the steadfast growth of its student body, we needed to take a good look at the modernization of the campus to accommodate student needs.



HAWAII ONLINE LIBRARY

As summer begins and the reopening phases continue, many have been eager for the return of our state libraries. On May 26th book drops were reopened for the return of books and other materials, and the libraries are excited to encourage patrons to call and pick up books placed on hold through the library system or by going online to utilize e-books and other resources.

Sign up online today for a library card that grants you free access to e-books, digital magazines and newspapers as well as other online learning tools. Library members can also watch films using the streaming service Kanopy as well as explore their family tree using Ancestry.com. Fines assessed from February 26th through the future reopening date will be waived. For more information call (808) 586-3500 or visit the [Hawaii State Public Library System](#) online.

FOOD & HEALTHCARE RESOURCES:

1. [Hawaii State Department of Health](#)

Stay updated with the most recent health updates on COVID-19 in Hawaii.

2. [Aloha United Way](#)

Call 211 for the only statewide hotline partnering with the Department of Health for help finding food, shelter, financial assistance, childcare, disability services, etc.

3. [MEDQUEST](#)

The Department of Human Services MEDQUEST division provides eligible low-income adults and children necessary access to health and medical coverage through managed care plans. Find out if you are eligible and file your application online for medical assistance coverage

4. [SNAP](#)

The Supplemental Nutrition and Food Assistance Program is funded through the USDA to qualifying households. Find out if this program will support your family at the link above.

5. [Hawaii Foodbank](#)

This dedicated nonprofit has been at the forefront of this pandemic working tirelessly to provide and distribute food throughout the community. Learn more about their efforts as well as more information on their upcoming food drives or to

MILILANI FACE MASK GIVEAWAY

Mahalo nui to Rotary Club of Mililani Sunrise, Every1ne Hawai'i, and all of the wonderful volunteers who gathered on Saturday, May 30th at the Mililani Town Center to give away free masks to the community! We also gave away masks on May 9th with Senator Donovan Dela Cruz at the Fred Wright Park in Wahiawa as well. It is because of these generous acts of service that we have successfully flattened the curve and continue to make strides for public health and safety!



EDUCATION RESOURCES:

1. [Hawaii State Department of Education](#)

For all the latest education updates for elementary, intermediate, special education, high school and college students, be sure to follow HDOE on Facebook and Twitter and refer to the link above for a list of COVID-19 information and updates.

2. [State of Hawaii Executive Office on Early Learning](#)

Parents with young keiki can find helpful resources to navigate childcare, supply donations, development and early learning for children 5 years and under. Click the link above for more information from the EOEL.

3. [DOE Grab-And-Go Summer Meals Schedule](#)

This important non-profit is committed to child advocacy and continues to demonstrate it with an extensive list of island-wide resources on everything from food, health, screening sites and more.

4. [2020 Childrens Summer Programs Guide](#)

Honolulu Family Magazine compiled a list of local summer programs throughout the state for parents in need of childcare this summer. Find out what is available near you!

INNOVATIVE ASSESSMENTS

Be part of an assessment program that fits your classroom needs!



CHANGE

In the first year, Grade 4 English Language Arts/Literacy (ELA/L) and Grade 8 Mathematics teachers that are part of the Hawai'i Comprehensive Assessment Program (HICAP) will combine their own classroom-based assessments, a shared performance assessment, and a shortened version of the statewide summative assessment to produce student reports in ELA/L and Mathematics.



OWNERSHIP

Be part of a collaborative group of educators that will lead the efforts in supporting each other and sharing best practices and ideas around classroom-based assessments.

SUPPORT

Receive free professional development around assessment literacy and standards-based grading.

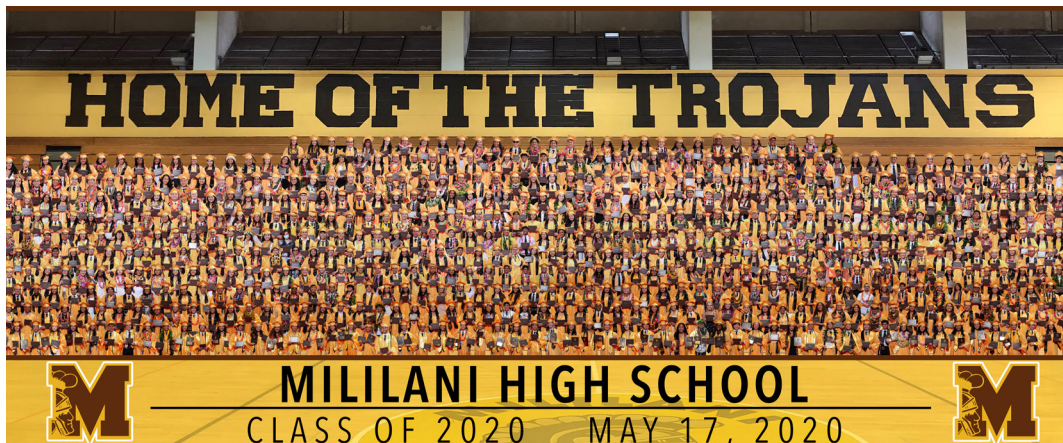


For more information about HICAP, visit <https://bit.ly/3cgw9xd>.

CONGRATULATIONS CLASS OF 2020!

I want to share my heartfelt congratulations to the graduating class of 2020 from Mililani High School and Waipahu High School! It has been so heartening to see the turnout from friends, family and the local community who were committed to celebrating the successes of our graduates, who have shown tremendous resilience and strength despite the challenges they have faced, which will serve them well in the future. I know you will all make us proud as you move forward into college, your careers and beyond! Our community and I are so very proud of you and wish you the very best in all of your new endeavors.

MILILANI HIGH SCHOOL



644 Graduates	212 Academic Honors Certificates
60 Valedictorians	292 CTE Honors Certificates
141 Summa Cum Laude	11 STEM Honors Certificates
104 Magna Cum Laude	16 Seal of Biliteracy Recipients
159 Cum Laude	8 AP Capstone Diploma Honors.

WAIPAHU HIGH SCHOOL

582 Graduates	184 Academic Honors Certificates
42 Valedictorians	127 CTE Honors Certificates
90 Summa Cum Laude	100 STEM Honors Certificates
66 Magna Cum Laude	77 Seal of Biliteracy Recipients
126 Cum Laude	136 Early College High School Initiative Credits



EDUCATION RESOURCES:

1. [UH Accelerated Online Associate in Arts \(AA\) Liberal Arts Degree](#)

UH is offering a flexible new accelerated online program for working adults which can be completed in less than 3 years. Applications are now open for the Fall cohort beginning August 24th. Apply at the link above.

2. [2020 CTE Summer Student Intern Applicants](#)

2020 HODOE graduates can apply now for a paid summer internship position from June 22-July 31 working at the State Office. Graduates can apply today at the link above!

3. [Next Steps to Your Future: Career Exploration](#)

Hawai'i public high school graduates are invited to take a free online UHCC class this summer to explore career options and earn credit towards a college degree.

4. [Stronger Together Hawaii Scholarship Fund](#)

First Hawaiian Bank & the Hawaii Community Foundation came together to create this scholarship fund aimed at keeping graduates career ready after their school year ended abruptly due to COVID-19. Online applications available in July, click the link for more information.