



## SENATOR POHAI RYAN

State Capitol, 415 S. Beretania St., Room 213  
Honolulu, HI 96813

email: [senryan@capitol.hawaii.gov](mailto:senryan@capitol.hawaii.gov) phone: (808) 587-8388

*Serving Senate District 25:*

*Hawaii Kai, Waimanalo, Keolu Hills, Lanikai & Kailua*

*Vice Chair, Hawaiian Affairs. Committee Membership: Public Safety, Military Affairs & Govt. Operations, Ways & Means, Water Land & Housing*



JULY  
2011

### INSIDE THIS ISSUE:

- Foodland (cont.) & Historic Sites 2
- Spotlight: Waimanalo 3
- Ku'ulei Rd. Meeting 4
- Resource Page: HPD 5
- NCNASL Site Visits 6
- Senator on the Move 7
- Community Events 8

PLEASE ADD US  
ON FACEBOOK  
AND TWITTER!



Facebook.com/  
SenPohaiRyan



Twitter.com/  
SenPohaiRyan

## FOODLAND EXIT BRINGS ATTENTION TO HAWAII'S FOOD SECURITY CONCERNS

Just before the dismaying news about the imminent loss of Koko Marina Shopping Center's Foodland hit the local media newswire, Senator Ryan was alerted by area residents about the lease negotiations that had been taking place quietly for quite some time.

Once the news was widely publicized, Senator Ryan started receiving an onslaught of constituent concerns that arrived via phone calls, emails and direct communication. Although many voiced their displeasure about

convenience, many more shared their unease specifically about food security. In response to con-



Hawaii Kai Foodland will close its doors on July 10, 2011

stituents' concerns, Senator Ryan sent out an informal survey to Senate District 25 residents by email to get a feel of how

residents are responding to the news. Many returned their surveys immediately. It became evident from the responses that Hawaii Kai and Waimanalo residents are very fond of Foodland and consider them an integral part of the community; a fixture that most never thought would leave the commercial landscape of the area.

Unfortunately, Koko Marina has decided to accept the offer put forth by Walgreens Co., which has

*(Continued on page 2)*

### Waimanalo Town Hall Meeting

2011 State Legislative  
Report by  
Senator Pohai Ryan  
Representative Chris Lee

Council Report by  
Councilmember  
Ikaika Anderson



### Waimanalo Town Hall Meeting

July 27, 2011

6-8pm

\*refreshments served

## COMMUNITY RECOGNITION

If you know someone in our community that has achieved something notable, let us know! We are looking for people to recognize through State Senate Certificates for their outstanding efforts in the community. These people can be sports league winners, boy or girl scout troops or admirable businesses — these are just some examples. There are no limits to the parameters and we would love to hear from you. Please call our office at 587-8388.

Historic information obtained from "Ancient Sites of Oahu" by Van James. Proceeds to Native Hawaiian Culture & Arts Program and Bishop Museum Press.

[www.bishopmuseum.org/press](http://www.bishopmuseum.org/press)

been strategically positioning its stores throughout Oahu over the last several years.

Senator Ryan recognizes that government cannot and should not interfere with private business contract negotiations. That is not the question presented here. But there is a lot at stake with the loss of a grocer that is badly needed in Hawaii Kai.

Again, returning to the subject of food security; during the last tsunami warning in March 2011, Foodland stayed open as late as possible knowing that the community was depending on their inventory to get last minute supplies, especially bottled water. The same cannot be said for other outlets in the area.



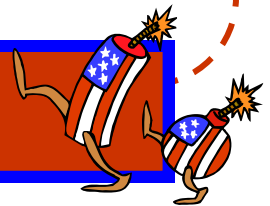
With the loss of Foodland, two options remain: Costco and Safeway. As much as Costco has a great supply of food, the entire community does not have access to their store as it is a private membership club.

With time, Senator Ryan is hopeful that Foodland may find an option to remain serving Hawaii Kai, even if

that means another location.

These developments have the effect of making everyone take pause and consider our emergency preparations and re-evaluate our family plans. It also serves to remind us why locally grown agriculture is so important. Hawaii must become more self sufficient in providing our own food sources.

## Historic Sites of Senate District 25



### KAPALIOKAMOA (Pele's Chair)

Located off Kalaniana'ole Hwy, at the end of the ridge above Queen's Beach within Ka Iwi State Park. Legend has it that this amazing lava formation is one of the places where Pele, Volcano Goddess, left Oahu to migrate to the eastern islands of Molokai & Lanai.

When viewed from afar, it resembles a throne. Ka Iwi Coast, from Hanauma Bay to Makapu'u is today a Hawaii State Park open to the public during daylight hours, daily. 2 mile hike r/t



Read more about historic sites of the district, Book available for purchase at COSTCO.



# Community News

*Hawaii Constitution  
Article XI, Subsection 1 and 3  
states;  
“For the benefit of present and  
future generations, the state  
and its political subdivisions  
shall conserve and protect  
Hawaii’s Natural beauty and  
all natural resources, including  
land, water , air, minerals and  
energy sources, and shall  
promote the development and  
utilization of these resources in  
a manner consistent with their  
conservation and in furtherance  
of the self sufficiency of the  
state...”  
Hawaii Constituion Section 3  
further states that “the State  
shall conserve and protect  
agricultural lands, promote  
diversified agriculture self-  
sufficiency and assure the  
availability of agriculturally  
suitable lands”.*

## WAIMANALO

**Kupuna Terrace** commu-  
nity groups continue to  
work with the City &  
County of Honolulu and  
Councilmember Ikaika  
Anderson to work out a win-  
-win solution to preserving  
the community created park  
site on Kalanianaole Hwy.  
Stay tuned for updates.

**Pathways for Health and  
Pedestrians** Senator Ryan  
will be coordinating commu-  
nity meetings to get input on  
what Waimanalo residents  
would like to see to improve  
the walkways mauka of  
Kalanianaole Hwy. to make it  
more user friendly for pe-  
destrians and compatible  
with home owners needs.  
Stay tuned.



**Traffic signs on Kalanianaole Hwy at Makapuu**

**The Directional Signs**  
that block some of the  
breathtaking Makapuu view  
are a requirement of the  
Federal Highways fund.

## Meet Waimanalo Agricultural Association

The Waimanalo Agricultural  
Association was formed in  
1995 to improve the safety,  
security, and appearance of  
the Farm Lots area of Wai-  
manalo Valley, as well as to  
promote fellowship among  
like-minded professional  
farmers.

Members of this private or-  
ganization have achieved ef-  
fective communication with  
neighborhood and govern-  
ment agencies to promote  
the long-term goal of land  
stability and improvement of  
the valley.

WAA believes that farm

lands should be used for ag-  
ricultural production, and  
that agriculture plays a vital  
role in preserving Waima-  
nalo’s delightful green envi-  
ronment and irreplaceable  
open space.

Contact: Clifford Migita, President  
[www.waimanaloag.com](http://www.waimanaloag.com)

## Waimanalo Agricultural Association Share Concerns

Senator Ryan is committed to  
having state agencies and repre-  
sentatives accessible to constitu-  
ents especially if they have con-  
cerns that they feel are not being  
addressed.

In May, Senator invited Director

Kokubun (DOA) and  
2nd Deputy Tam  
(DLNR) to address  
the members and  
guests of Waimanalo Agri-  
cultural Association at their  
monthly meeting. Issues dis-  
cussed included the recent



Sen Ryan, Director Russell Kokuboun, Dept. of Agriculture and  
2nd Deputy Bill Tam, DLNR

thefts of locally grown agriculture and the status  
of lease terms (length and cost), and the lease re-  
negotiation process.

# Community Meeting on Ku'ulei Road Median Strip Brings Better Understanding for DTS and Decision Makers

## KAILUA

Approximately 100 Kailua residents attended a community meeting hosted by Senator Ryan, Council Member Anderson and Representative Lee at Kailua Elementary School Cafeteria on June 6, 2011 to address concerns of the proposed Kuulei Road median strip.

A panel of speakers, including Honolulu Director of Transportation Services, Wayne Yoshioka came to Kailua Elementary on June 7th. Kailua residents received information on the proposed Ku'ulei Road Median Strip designed by the Kailua Urban Design Task Force (KUDTF), a non profit volunteer group made up of architects, planners, and resi-

dents.

As is customary, people held divergent views about the proposal. But consensus was reached concerning wanting to see a safer street for children crossing to and from school.

All concerns were duly noted, and Senator Ryan believes that many are

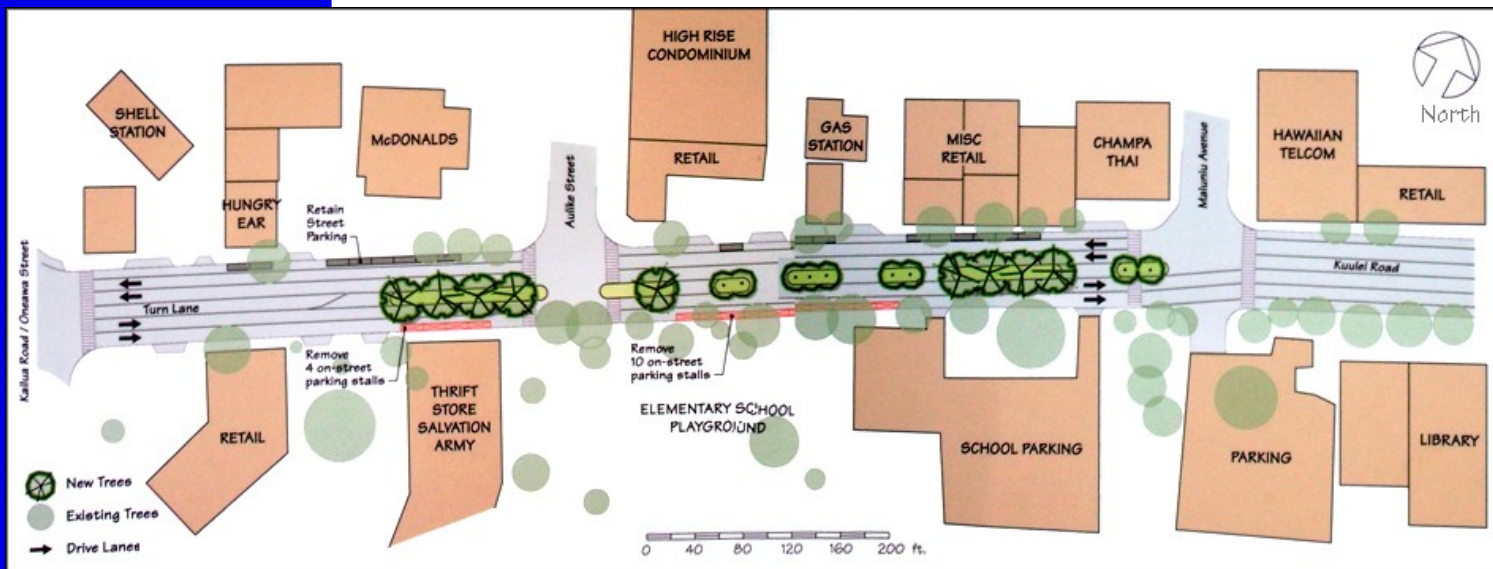
valid, including concerns for emergency vehicles, tree maintenance, delivery truck access, amongst others.

She supports a design that would widen sidewalks and create safer crosswalks with lights. Further meetings will be organized and updates will also be forthcoming.

### KUDTF Ku'ulei Rd. Conceptual Median Strip

Website (for more info):

<http://ourtown808/kailua/urban>



#### HIGHLIGHTS & BENEFITS (PER KUDTF)

- 435 feet of landscaped median strip
- Access points to driveways retained
- No reduction in traffic capacity
- Potential to include bike lanes
- Improve pedestrian safety
- Downtown beautification

#### CONCERNS

- Access points to business drives may be prohibitive for delivery trucks, i.e. petroleum truck, McDonald's delivery truck, etc.
- Median strip may encourage jay walking
- Costly to maintain

#### COMMENTS

- Some alternate recommendations included:
- Bike lanes
- Stop lights
- In street (embedded) flashing crosswalk lights
- Fix sidewalks
- Keep "Old" Kailua feel

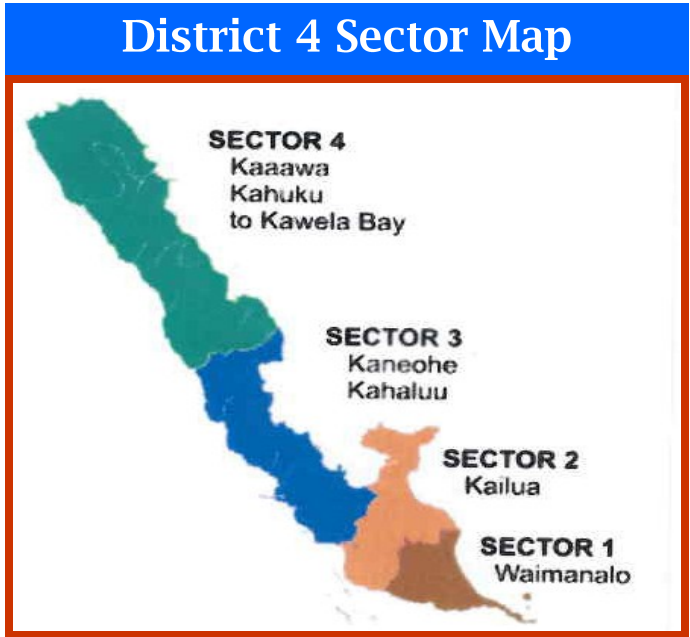


# COMMUNITY RESOURCE PAGE

We are very well protected by our law enforcement agencies. They have created community policing programs, and provide a wide variety of other services in order to keep our citizens safe. Here are just a few of the resources available to our community. Please keep this page for your future reference.

**For information on the following services please call the District 4 DPT office at 723-8874**

- Business Watches**
- Citizen's Patrol**
- Community Traffic Awareness Partnership**
- Graffiti Paint Outs**
- Mobile Patrols**
- Neighborhood Security Watch**
- Police Explorers (youth program)**
- Seniors Against Crime**



**For information on the following services please call HPD Community Affairs Division office at 529-3351 for scheduling presentations in your area or request online at :**

<http://www.honoluluupd.org/community/index.htm>

- Keiki ID**
- Pedestrian and Driver Safety Presentations**
- Security Presentations**
- Say HI**
- Any other Police Presentations**

Honolulu Police Department (HPD)  
 District 4 Community Policing Team (CPT) Referral Card  
*Servicing Windward Oahu from Kahuku to Waimanalo with Aloha*

Kailua Police Station	262-6555
Sergeant Duane K. Samson, Supervisor	723-8874
Officer Gaynor Minton, Sector 1 (Waimanalo)	723-8879
Officer Alfred "Sonny" Kanohe, Sector 2 (Kailua)	723-8876
Officer Vernon Kleinschmidt, Sector 3 (Kaneohe-Kahaluu)	723-8875
Officer George "Keoki" Larosa, Sector 4 (Kaaawa, Kahuku to Kawela Bay)	723-8878
Officer Guy Orogo, GIS	262-6555

*\*Information provided by HPD District 4 CPT Referral Card*



Senator was visited by Senator Suzanne Williams of Colorado while on a tour of the Hawaii State Capitol after the National Caucus of Native American State Legislators which took place at the Sheraton Waikiki from June 20-June 22, 2011.

## Native American State Legislators Hold Conference on Oahu and Make Site Visits to Waimanalo Health Center and Blanche Pope Elementary School

On June 20, 21 & 22, 2011 the National Caucus of Native American State Legislators (NCNASL) was hosted by the Native Hawaii Legislative Caucus in Honolulu during their annual conference which took place at the Sheraton Waikiki..

Assembled were State Representatives and Senators from across the nation. These elected officials belong to various tribes, including Cherokee, Ojibwe, Yaqui, Navajo from the mainland states of Oklahoma, Colorado, Arizona, Washing-

ton, Kentucky, Illinois, amongst others.

The pre-conference started with a site visit to the Waimanalo Health Center where everyone learned about how the rural community of Waimanalo provides high quality health and dental care for people who may or may not be insured.

On day two of the conference the group came back to the district to see Pope Elementary School where they were able to meet with a parent

and see the benefits of the newly renovated library donated by Target Corp. Members were encouraged to inquire with their own regional Target to see if their respective districts can benefit as well.

The group leadership joined in an Awa Ceremony and visited the Waianae Coast Comprehensive Health Center where they meet with kupuna healers. The group also visited Hawaiian Hall at Bishop Museum .

“Those who won our independence believed liberty to be the secret of happiness and courage to be the secret of liberty.”

Louis D. Brandeis

## WINDWARD GREEN BUILDING EXPO

*“Promoting business, creating jobs”*

Exhibitors, Workshops and Tours of “Green” Built Homes

**SAVE THE DATE!**

**Saturday, September 17, 2011**

**8am-2pm**

*Hosted by Senator Pohai Ryan*

**MOKULUA BUILDERS \*POHAKU CONSULTING\*ARCHIPELEGO DESIGN**

# Senator on the MOVE!

June 2-Kailua Neighborhood Board

June 3-Olelo Taping, "First Friday"

June 6-8-Host KS 10th grader Volunter Shadow

June 6-Waimanalo Homestead Association Membership Meeting

June 7-Business Planning CNHA meeting

June 7-Model Demonstration New Hawaiian Home (Green Building) visit

June 7-Hosted Kuulei Road Project Community Meeting

June 8-Hawaii Jobs Corps Council Meeting and Luncheon, tour facilities

June 9-Legacy Lands (DLNR) Fong Plantation site visit

June 10-work in office, Kamehameha Day Holiday

June 13-Waimanalo Neighborhood Board

June 15-Meeting with Lauren Cheape, Miss Hawaii 2011

June 17-Community Gathering: 'Ahahui Malama i ka Lokahi, Nohea Gallery

June 18-MMA Hawaii Expo, guest

June 19-WAA Pig Out event, Waimanalo

June 20-22 National Caucus Native American State Legislators, site visit to Waimanalo Health Center (6/20) Pope Elementary (6/21)

June 24- Legacy Lands Site Visits (DLNR)

Sunset Ranch, Pupukea  
Turtle Bay, Mauka  
HARC, Konia

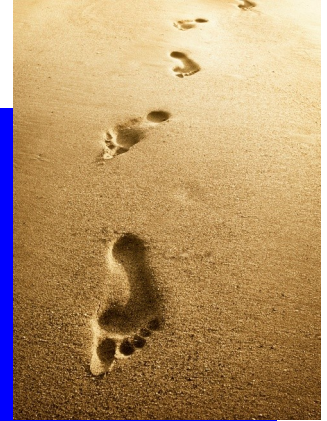
June 27-Waimanalo Village Residents Association Membership Meeting

June 27-Hawaii Kai Neighborhood Board Meeting

June 28-DBEDT Business Workshop, Koolau Country Club Ballrooms

June 29-Olelo Taping, Senators Ryan & Slom

June 30-Kailua Town Hall Meeting, Kailua Intermediate Cafeteria co-hosted by Reps. Lee and Thielen & Senator Ryan.



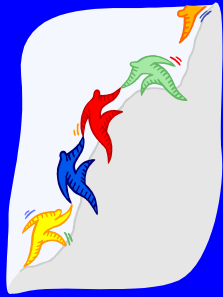
## Kailua 2011 Legislative Town Hall Meeting

On the evening of June 30th, the three Kailua State legislators: Senator Pohai Ryan, Representative Chris Lee and Representative Cynthia Thielen joined together to hold a town hall meeting to share developments from the 2011 Session and receive input from constituents. A power point presentation was given outlining successful bill passage from each of the standing committees by Senator Ryan and she shared experience as a freshman.

Residents had the opportunity to question the legislators and discuss issues that are of concern to the community and the State of Hawaii. Some topics that were discussed included the budget, education, energy sustainability, agriculture & food security, among others.

Future forums will be scheduled, and the legislators sincerely hope that more people will come out to engage and have their voices heard in our political process.





# Volunteer Opportunities

**Waimanalo's Hawaii Food Bank** needs volunteers to pack bags of food and make other arrangements for those in need. Volunteer opportunities are every Wednesday at 4:00 pm. St. Matthew's Episcopal, Waimanalo. Please call aunty Nickie Hines to help at 259-8406.

**Seagull Pre-School** has many volunteer opportunities for those who enjoy helping young keiki ages 2-5. There are many choices ranging from reading to the kids to taking them on field trips. Contact: Jayne Arasaki, 674-1444

**Community Helping Schools** is dedicated to improve the quality of education in Hawaii's public schools. Many public schools turn to Community Helping Schools with requests for various volunteer services. You can see what the schools need help with on Community Helping School's website at <http://communityhelpingschools.org/wishes/volunteer>, Contact: Kathie Wells, 225-2621

**Sea Life Park** has various volunteer opportunities to help both the animals and the community. If you enjoy working with animals you can help rehabilitate sick and injured seabirds, or if you want to educate the community you can assist with student outreach programs. More information and applications are on their website [www.sealifeparkhawaii.com/educintern\\_volunteer.asp](http://www.sealifeparkhawaii.com/educintern_volunteer.asp). Contact: Brianna Saylor, 259-2513.

## Upcoming Events

### LEGISLATIVE BILL DRAFTING WORKSHOPS PLANNED FOR SENATE DISTRICT 25

Learn how to introduce Legislative Bills to the State Senate, House of Representatives and to the City Council.

Senator Ryan, Rep. Lee and CM Anderson will host a "how to" workshop for area residents in early Fall. Details to be determined.

Waimanalo-September  
Kailua-October  
Hawaii Kai-pending.

Learn how to lobby for your cause and if you want to introduce a law through the Legislature or City Council we will show you how you can contribute to issues and causes that matter to you and



Hawaii State Capitol where laws are made in the House of Representatives and State Senate.

your community! The process may be simpler than you think, knowing this process will empower you or your group to introduce a bill for consideration by your district elected officials.

\*\*\*\*\*

Waimanalo DHHL  
Kupuna Hale Emergency  
Disaster Kit Assembly  
Workshop- TBD

Windward Green Building  
Expo-September 17, 2011

## Participate!

Contacting your District Senator is not the only way to get involved in the Legislative Process; you can also participate by contacting the

### Hawaii Legislature Public Access Room.

#### Contact Information:

Website: <http://hawaii.gov/lrb/par/>

Email: [par@capitol.hawaii.gov](mailto:par@capitol.hawaii.gov)

Phone:  
(808) 587-0478 phone  
(808) 587-0749 TTY phone  
(808) 587-0793 fax

Hours: M-F 8:30am - 5pm Sat  
8am - 2pm